

A9.27-4

BULK RATE  
U. S. POSTAGE  
PAID  
PERMIT NO. 15  
KENT, OHIO

# MODERN STEEL CONSTRUCTION

NUMBER 4 • 1987



## THIS ISSUE

Airline Raises the Roof!  
New Breath for an Old Site  
Steel Fields Complex Curves  
Design Considerations for Stamping Plant  
Orlando Depot—a Roof that Floats



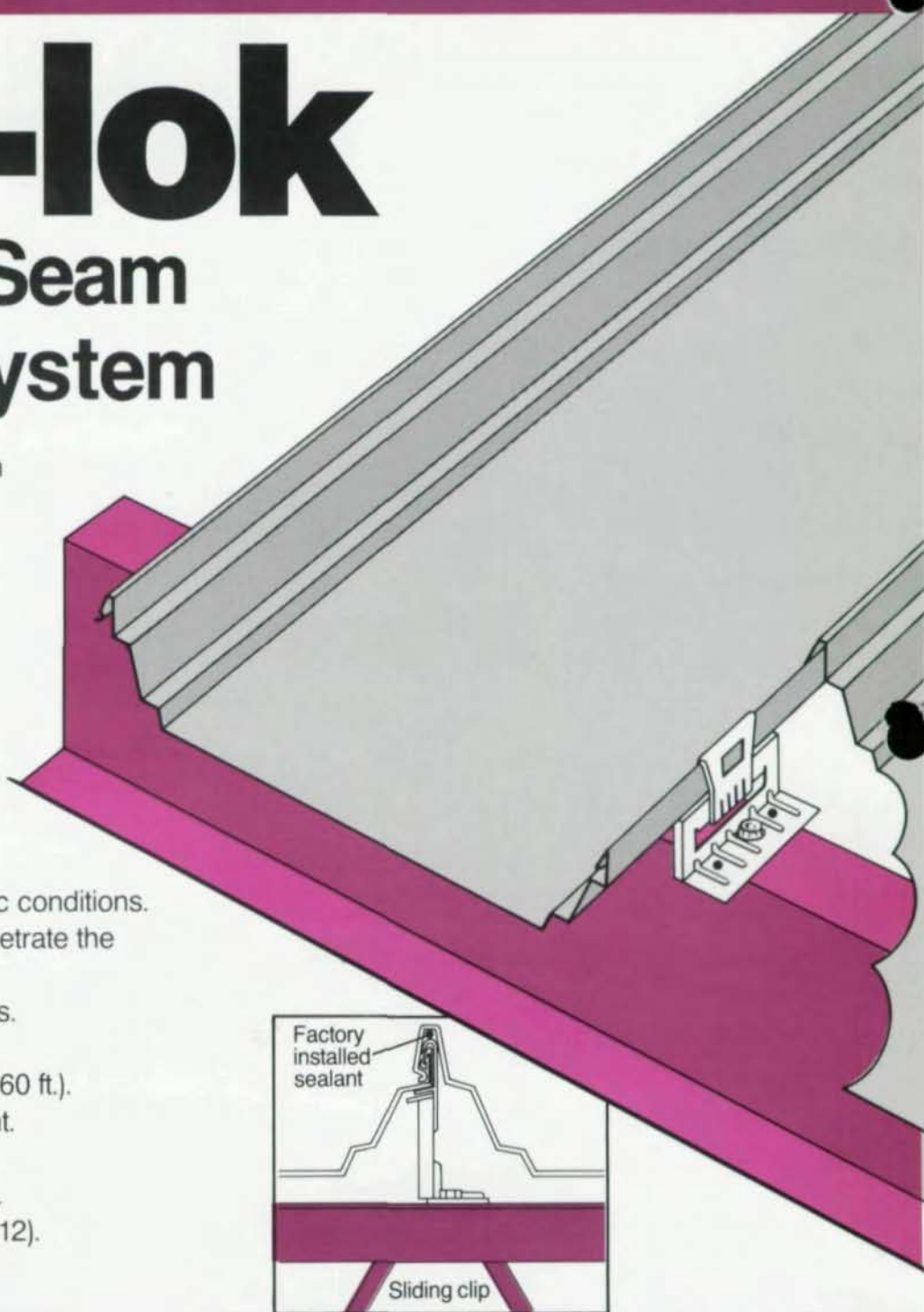
UNITED STEEL DECK, INC.

# Uni-lok

## Standing Seam Roofing System

A quick erecting standing seam roofing system with superior weather-tightness features.

- Provides a fully floating roof to accommodate expansion and contraction.
- Easy to install:  
No seaming tools, No battens,  
Snaps into place.
- Solution for nationwide climactic conditions.
- Minimal exposed fasteners penetrate the building envelope.
- Excellent loading characteristics.
- Carries UL 90 classification.
- Available in long lengths (up to 60 ft.).
- Contains factory applied sealant.
- Suitable for new construction.
- Adds value to retrofit structures.
- Works at low slopes (min.  $\frac{1}{4}$  in 12).



NICHOLAS J. BOURAS INC.  
P.O. BOX 662, 475 SPRINGFIELD AVE.,  
SUMMIT, NEW JERSEY 07901 (201) 277-1617

UNITED STEEL DECK, INC.



ASSOCIATE MEMBER



MEMBER

# Soda... designs your least-weight steel structure fast...and automatically

Finally, a practical structural engineering software package that not only analyses but automatically designs a least-weight (optimal) steel structure.

SODA represents the perfect blending of state of the art structural engineering and modern optimization research. SODA is a truly practical steel design optimization package that permits the designer to concentrate on engineering instead of routine calculations, thereby reducing design time and costs.



SODA automatically and completely designs a least-weight planar steel frame or truss from section databases in complete conformance with design code requirements. The design by SODA is complete, constructable and ready to implement. There is no need to re-analyse and re-size as is the case with other steel design programs. The software designs not only member by member, but by considering

the entire structure as a system. The design satisfies both strength and deflection requirements.

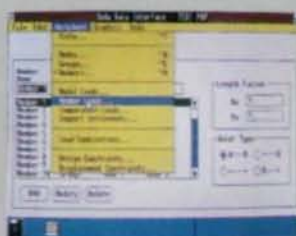
- Design codes supported:
  - AISC WSD 1978 Specification
  - AISC LRFD
  - Canadian CAN3 - S16.1 - M84 Limit States Design
- Microsoft® Windows environment
- Mouse or keyboard interaction

- Members selected from AISC or CISC database or from user's custom data base
- Comprehensive yet concise user's manual
- 30 day evaluation period, refund if not satisfied
- Runs on IBM PC XT/AT or compatible
- Minimum 512 KB and hard disk required

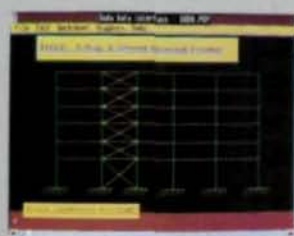
\* - Microsoft is a registered trademark of Microsoft Corporation.



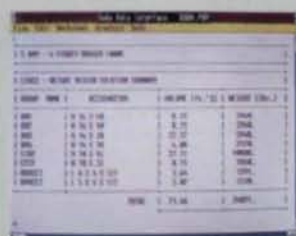
Input and editing is quick and easy.



User interface is accomplished with mouse and drop down menus.



Graphics displays are accessible at any time.



The optimal design is presented in a logical and concise manner.

To get more information on SODA and to receive your free demonstration diskette:

CALL TOLL FREE (in continental U.S.)  
1-800-265-2766  
or COLLECT (519) 885-2450

or WRITE  
WATERLOO ENGINEERING SOFTWARE  
A Member of the NEXA Group

Park Avenue Atrium  
237 Park Ave., Suite 2143  
New York, NY 10017

180 Columbia Street West  
Waterloo, Ontario  
Canada N2L 3L3

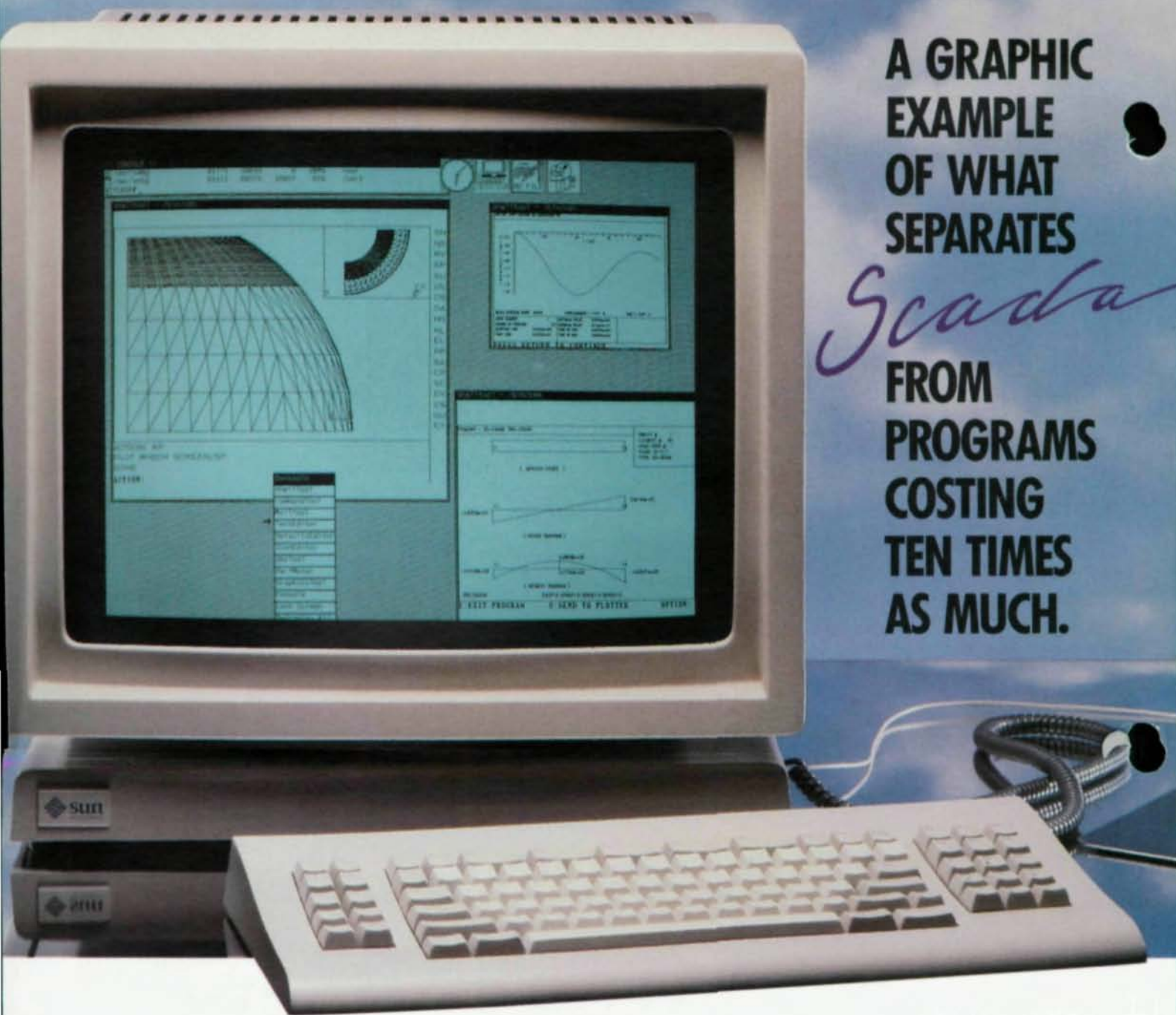
**soda**

**STRUCTURAL  
OPTIMIZATION  
DESIGN AND ANALYSIS**

**A GRAPHIC  
EXAMPLE  
OF WHAT  
SEPARATES**

*Scada*

**FROM  
PROGRAMS  
COSTING  
TEN TIMES  
AS MUCH.**



If an \$1,800 base price seems too low for advanced finite element analysis and design software, you can always spend ten times more on a competitive program. But look what you'll be missing:

- ▲ The world's most powerful and versatile 2-D and 3-D desktop finite element analysis system.
- ▲ Graphics capabilities only available in far more expensive programs.
- ▲ SEDIT. A state-of-the-art, interactive and menu-driven preprocessor offered by SCADA at no extra charge, and unlike anything attempted by any other FEA developer.
- ▲ Plus the ability to add, for \$1,000 more, either concrete or steel design capabilities including AISC's latest Load Resistance Factor Design (LRFD) Code.



**AMERICAN COMPUTERS & ENGINEERS**

11726 San Vicente Blvd., Suite 212,  
Los Angeles, CA 90049

Tel.: (213) 820-8998 Telex: 493-0363 ACE UI

Taken as a whole, SCADA represents the finest integrated design and analysis software available today. SCADA's integrated modular configuration makes it the only program that can grow without any change to its architecture. Add flat-slab or shear-wall design—even buckling and nonlinear capabilities. Whether you're a big organization designing some of today's largest structures, or a smaller firm with simpler requirements, you'll find SCADA adapts easily to the projects at hand.

SCADA is available exclusively through American Computers & Engineers. For a brochure detailing the full scope of its capabilities, simply contact us at the address below. And prove to yourself that a powerful engineering program needn't come with an overpowering price.

# MODERN STEEL CONSTRUCTION

VOLUME XXVII • NUMBER 4  
JULY-AUGUST 1987

## American Institute of Steel Construction, Inc.

The Wrigley Building  
400 North Michigan Avenue  
Chicago, Illinois 60611-4185

### OFFICERS

Werner H. Quasebarth  
Chairman

Samuel Y. Golding  
First Vice Chairman

Oscar W. Stewart, Jr.  
Treasurer

Neil W. Zundel  
President

William W. Lanigan  
Secretary & General Counsel

Lewis Brunner  
Vice President, Membership Services

Gerhard Haaijer  
Vice President, Technology & Research

Morris Caminer  
Vice President, Finance/Administration

William Y. Epling  
Vice President, Government Affairs

### EDITORIAL STAFF

George E. Harper  
Director of Publications

Brenda Follmer  
Assistant Editor

Lona Babbington  
Business

### ADVERTISING REPRESENTATIVE

The PATTIS GROUP  
Kirby Palait  
4761 West Touhy Avenue  
Lincolnwood, Ill.  
312/679-1100

### ON OUR COVER:

Georgia Botanical Garden Visitor's  
Center, Athens, Georgia

- 
- 8 Stapleton International  
Raising the Roof—  
with People Below



- 
- 19 655 South Hope  
New Breath for an Old Site

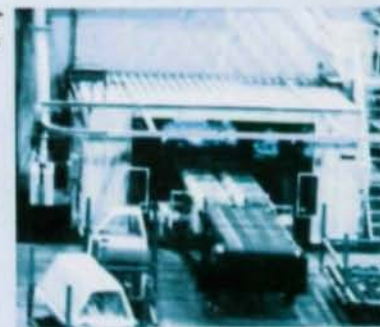


- 
- 25 Steel Notes

- 
- 26 Steel Fields the Curves  
on Complex Interchange



- 
- 28 Structural Design Considerations  
for Stamping Plant

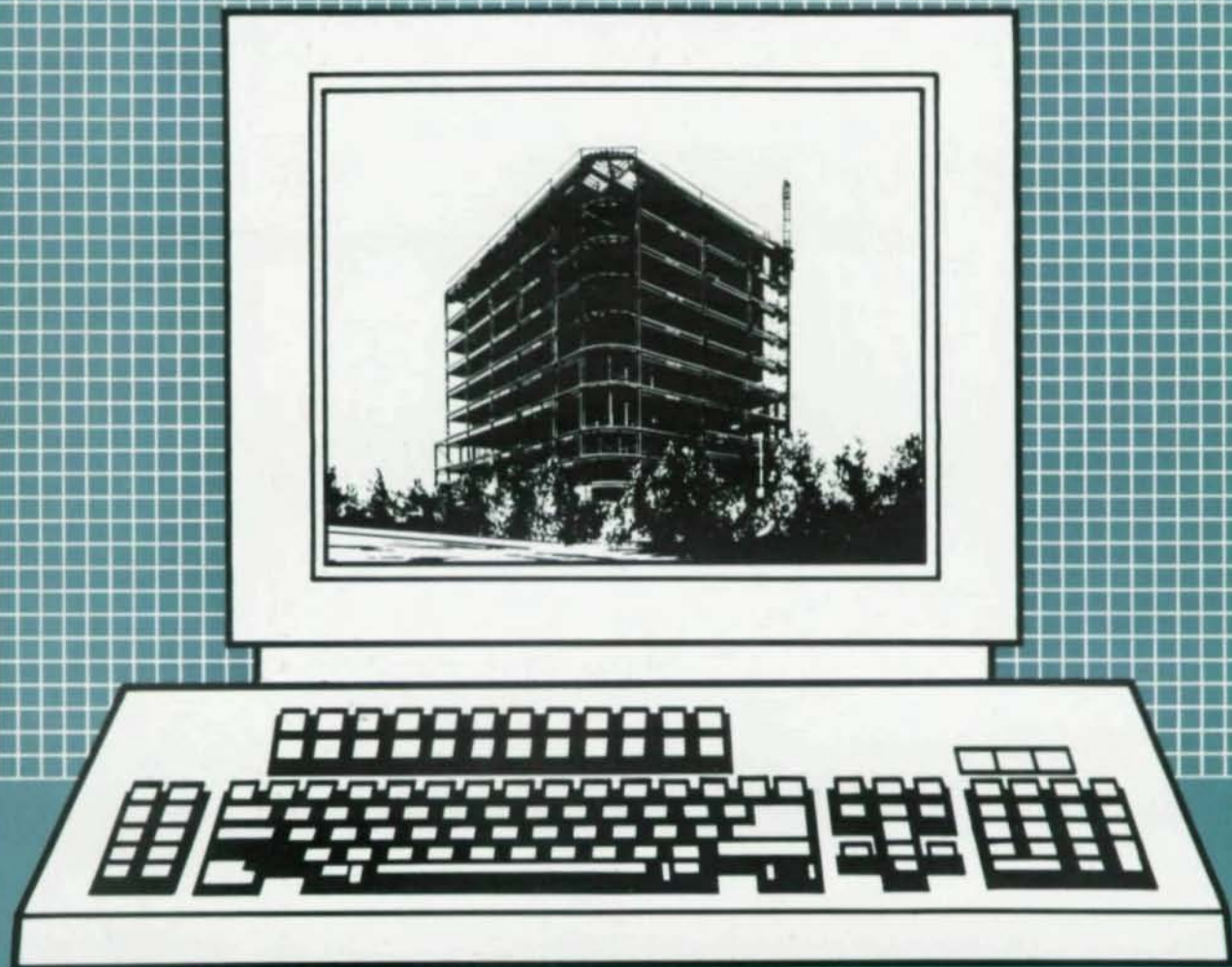


- 
- 36 Orlando Bus Depot  
A Roof that "Floats"



**NEW PRODUCTS**  
Estimate™ and Steelflow™

# Looking at Computer Detailing?



If you've been evaluating computerized structural steel detailing, you should know a new leader has emerged . . . **DETAIL™**

Compare, and you'll find, as others across the country have . . . nothing else comes close! **DETAIL™**

Simply the Best.

Also, **DETAIL JR™** — a full-function graphics based detailing system for \$4995!



**GEOMETRIC DATA FLOW, INC**

# Geometric Data Flow's Detail™ Feature List

## SIMPLE INPUT

- Uses grid planes from design instead of absolute X, Y, Z.
- Allows multiple member input with a single command.
- Virtually eliminates trigonometry calculations for skewed and sloping members.
- Global assignment of connections, as opposed to point by point.
- Produces opposite hand structures with minimal effort.
- Interactive CAD graphics for drawing modifications.
- Easy to learn (8-10 hours training).

## INPUT VERIFICATION

- Automatically produces scaled plan and elevation drawings to visually verify steel input and connection assignment prior to plotting shop details, greatly reducing the time required for checking.

## DRAWINGS AND REPORTS

- Automatically details all connection material separately.
- Automatically details all members (beams, columns, bracing, etc.) by size and weight, combining all identical members.
- Automatically classifies and composes shop detail drawings for optimum space utilization.
- Automatically plots bills of material showing piece weights, assembly weights, and sheet totals.
- Automatically generates field bolt lists.
- Automatically assigns and plots piece marks customized to your shop standards.
- Automatically generates advance bill of material.

- Automatically generates user-defined piling or staging report for sequencing fabrication and shipping.
- Automatically generates a mill order for most economical lengths.
- Automatically plots full size templates.

## COMPREHENSIVE CONCEPT

- Details the building as a unit instead of member-by-member.
- Handles all shapes, wide-flange, tube, channel, pipe, etc.
- Supports over 60 commonly used connection types with maximum flexibility within each type.
- Performs connection design calculations.
- Flags troublesome connections, allowing the user to make corrections prior to plotting detail drawings.
- Maintains a complete file of structural members and connection material for estimation applications.
- Graphics processor language allows user to implement custom enhancements.
- Integrates to virtually any shop CNC equipment.

## STATE-OF-THE-ART COMPUTER TECHNOLOGY

- Runs on Compaq 386™ three times faster than other PC/AT compatibles.
- A single workstation supports jobs from several detailers with a clerk/typist performing data input, processing, and plotting functions.
- Supports voice response technology for super fast input, without a typist.
- Uses professional graphics high resolution monitor — 1024 x 800 pixels.



## GEOMETRIC DATA FLOW, INC

Computer Software For The Construction Industry

337 North Vineyard Avenue, Suite 206

Ontario, Calif. 91764

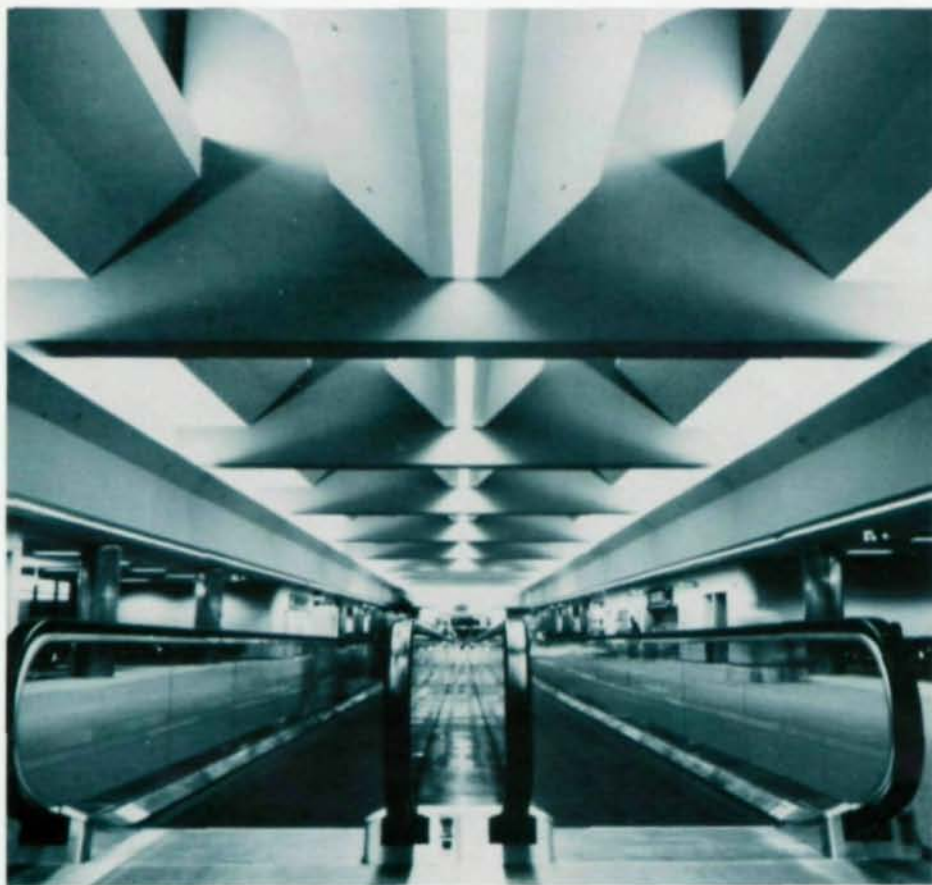
(714) 984-1269 1-800-DETAIL-5 (338-2455)

# Fast Tracking

## STAPLETON INTERNATIONAL AIRPORT

### Raising the Roof— with People Below!

by Richard Weingardt



To raise the roof, lengthen and widen the busiest concourse in the fifth busiest airport in the U.S., without disrupting aircraft activities or endangering 30,000 daily travelers, demanded precision design and construction coordination. Significant alterations to existing facilities were required to stay in budget and on an 18-month construction schedule and still maintain full operation of an airline.

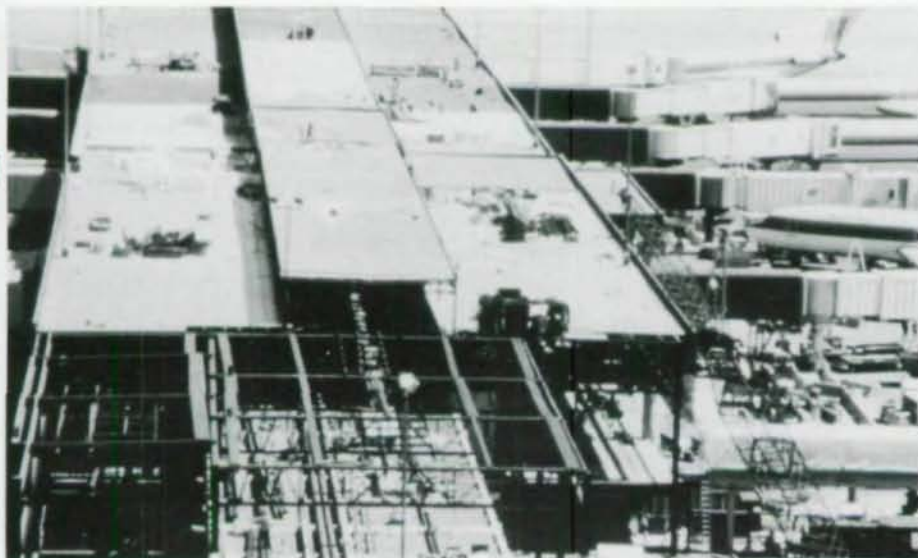
When United Airlines decided to remodel and expand Concourse B at Denver's Stapleton International Airport, they wanted a dramatic, image-conscious, yet cost-effective design. Despite plans to build a new \$3-billion airport in Denver in the near future, United Airlines wanted a high quality solution—built to last, with low maintenance. Design of the new concourse was approached not as a temporary solution, but as a prototype for the quality to be expected in the proposed new airport.

Design and scheduling were the keys necessary to successfully meet the objectives for continuous operation, minimum passenger disruption and maximum passenger safety. The normal approach—first completing new construction and then demolishing the existing structure—would not work. The existing building was envel-

*Finished photography by Ed Leland*

MODERN STEEL CONSTRUCTION

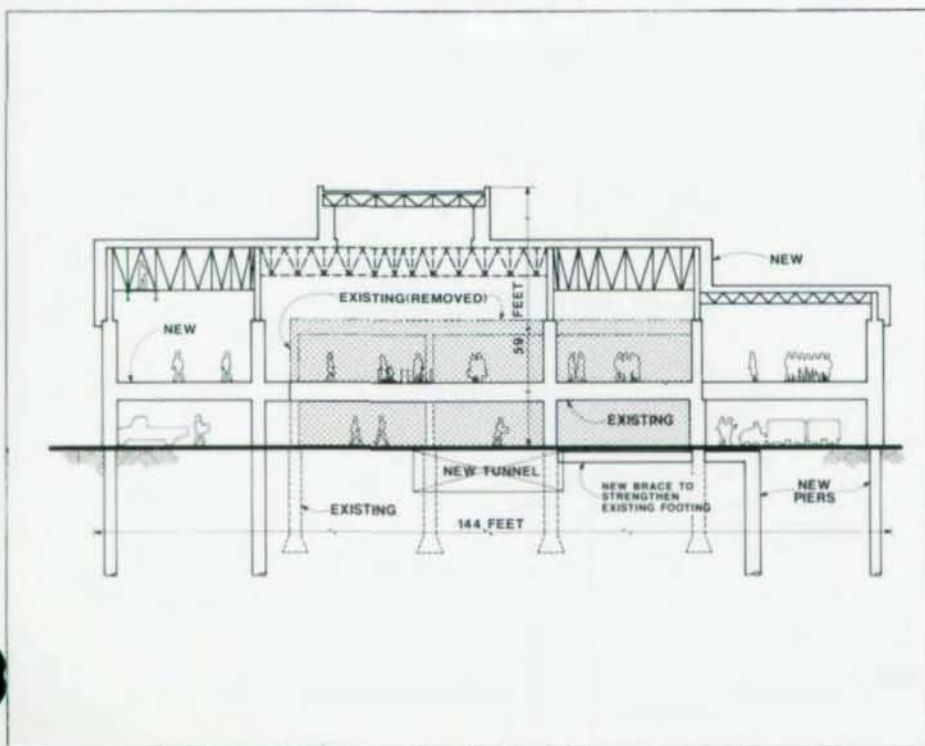




New steel-framed roof structure and roofing systems span entire concourse, creating attic space (below) to house mechanical/electrical systems.



Cross section shows relationship between new and existing structure.



oped with the new, utilizing the existing structure as the work platform and scaffolding for construction of the new concourse. The existing also served as the protected enclosure for passengers during construction.

Concourse B was widened to 112 ft and lengthened to 1,200 ft, with the roof raised to 49 ft above ramp level. A new VIP lounge area, the Red Carpet Room, was added to the terminal end of the 179,000 sq. ft facility.

#### Structural Steel Envelope Economical

The new structural system was engineered so the existing building could remain intact while new construction stayed on schedule. Fast-track, phased construction techniques were necessary to tie new improvements into the spaghetti-like network of old construction in the existing buildings. In addition to the complexities of building an entirely new structure around the integral with an existing one, pedestrian circulation required a column-free 52-ft wide corridor. All existing interior columns supporting the roof had to be removed along the entire 1,200-ft length of the concourse while the facility stayed in full operation. And, the existing structure and foundation needed to be extensively modified because they

## STEEL DETAILING

with

AUTOCAD®



## "BEAMS and COLUMNS"™

*The most versatile  
Structural Steel  
detailing system  
available...*

### COMPUTER AIDED DETAILING

*Developed by Detailers for Detailers*

COMPUTER DETAILING CORP.

301 York Road  
Warminster, PA 18974  
215-675-4831

could not support new loads and did not meet current codes.

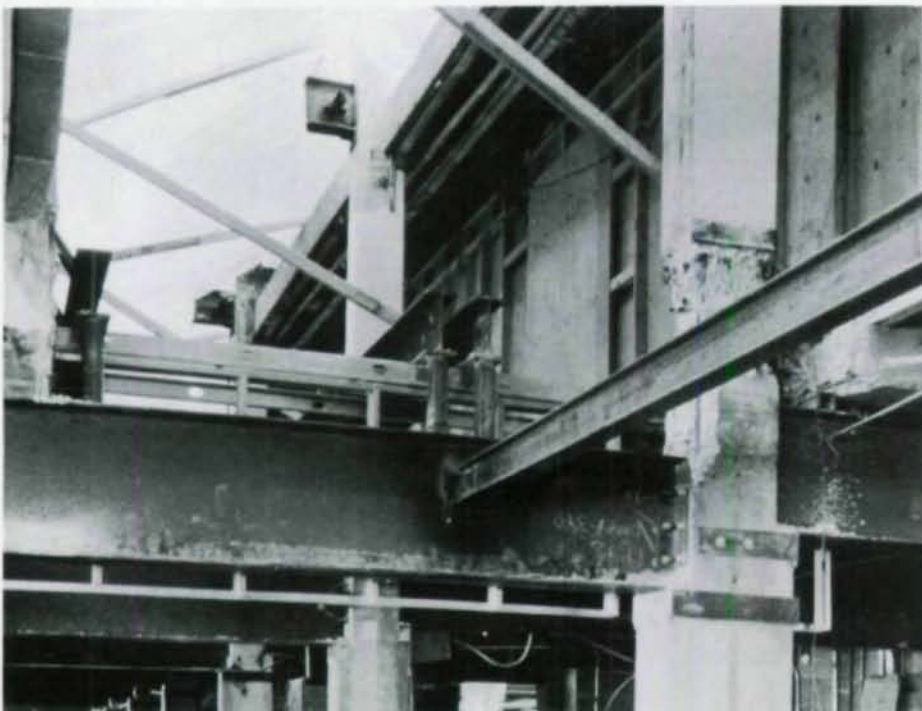
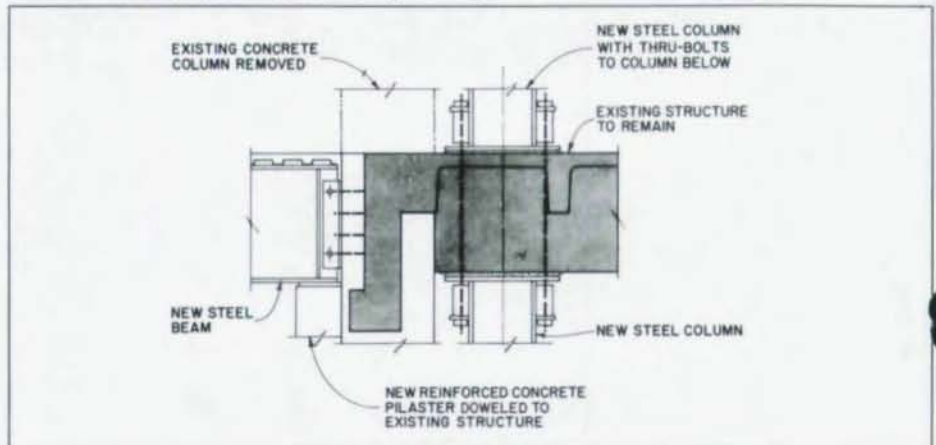
The existing, two-story framing is almost entirely concrete rigid frames supported by shallow foundations, originally built in the 1950's and added onto many times in ensuing years. Some steel columns were added in various phases between 1955 and 1966. After much investigation into viable alternative framing systems for the new building, structural steel was selected for the superstructure. Steel was chosen because it was faster to erect and because of its light weight. Also, it proved to be more economical and flexible.

The new roof was designed to completely span the existing concourse. Structural design used an independent series of steel rigid frames. Part of the new roof frame is supported on the existing concrete columns, while the steel frame that extends beyond the older structure is supported on deep-drilled piers anchored in bedrock. Every other existing column was strengthened and used to support the new roof frame on one side. The moment-resistive frame supports both gravity and lateral loads.

New drilled piers were placed along one side of the existing ones as the structure was widened. Below ground and beyond the perimeter of the concourse supplemental drilled piers were installed and poured integrally with concrete beams to form concealed sub-surface rigid frames to strengthen existing footings for the new, heavier loads. To brace existing below the floor columns and piers during excavation for foundations, a temporary steel-beam system proved economical. Beams were



*New permanent steel beam supports existing concrete beam and floor to accommodate moving walkway.*



*New steel beam under existing floor permits removal of old structure to recess moving walkway.*

# T.S.® Bolts & Tools

**I.C.B.O. Listed**  
 Full range of certified A325 and A490 bolts and complete complement of tools for installation, including "Tone" tools and the new TSW 60LC high speed, swivel head tool.



**NEWEST OF FULL LINE OF LIGHT WEIGHT TOOLS**

**BRISTOL® MACHINE COMPANY**  
**cfs** Construction Fastener Systems Division

630 E. Lambert Road, Brea, CA 92621 • 714-990-6555  
 WATS 1-800-872-6587

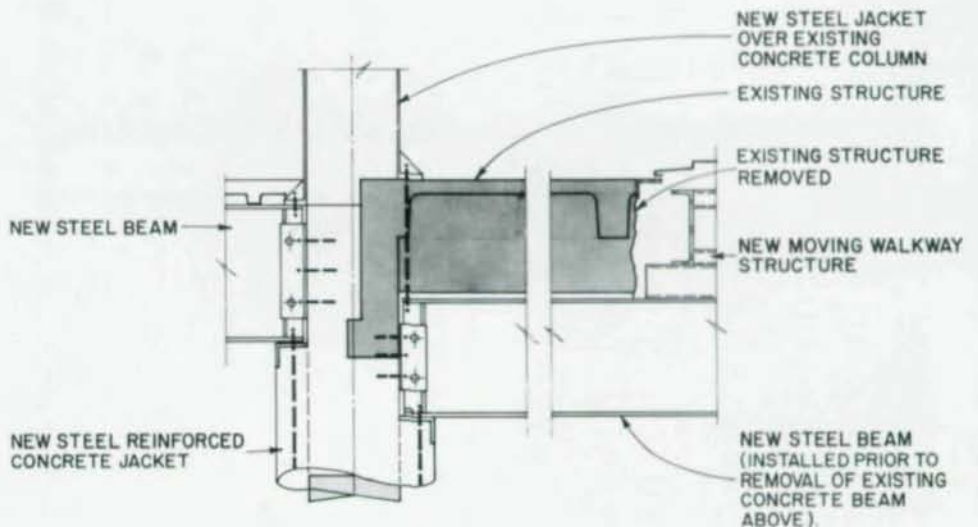
reused in the superstructure as framing for the new moving-walks.

The old columns were strengthened by either using steel plate jackets or round concrete shapes. Existing concrete columns were completely wrapped by steel jackets or were encased compositely in concrete for added strength. Existing steel columns were strengthened by welding steel plates to existing wide-flange shapes.

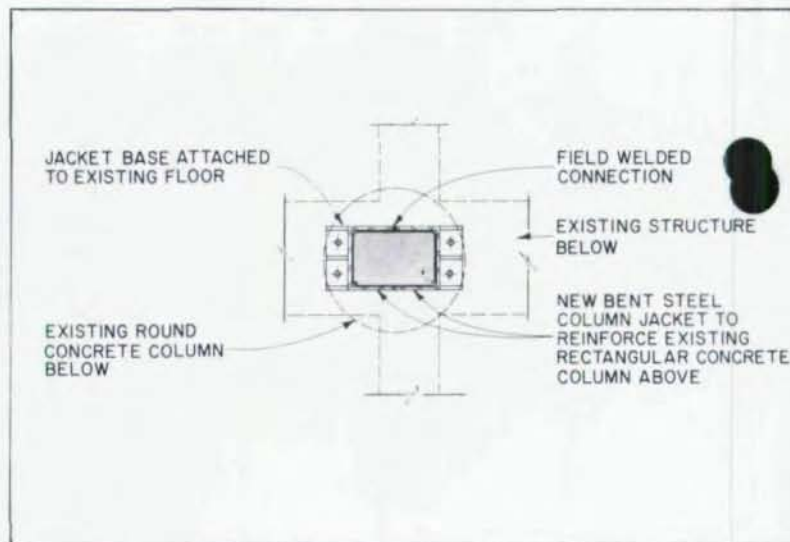
Installation of new moving-walks required existing concrete beams be notched their full depth. A new steel floor girder system, fitting underneath concrete beams within the existing headroom below was installed prior to notching to permit construction without disruption to traffic.

### Steel Pre-ordered from Mills

Structural steel was pre-ordered from mills while structural drawings were in the early stages—1,600 tons of structural steel and 600 tons of joists. An extensive ceiling cat-walk system, almost another full level of space, has 480 tons of structural steel. The largest column in the main structural roof frame, which spans the entire width of the concourse and is a moment-resistive rigid frame in both directions, is a W14 x 283.



*Detail of new steel beam installation*



Old concrete column (l.) was strengthened by pouring concrete and compositing with existing to form new column. Detail of column strengthened by new steel jacket (above).

Six-foot deep joist girders span 55 ft between the frames, while regular joists span the joist girders.

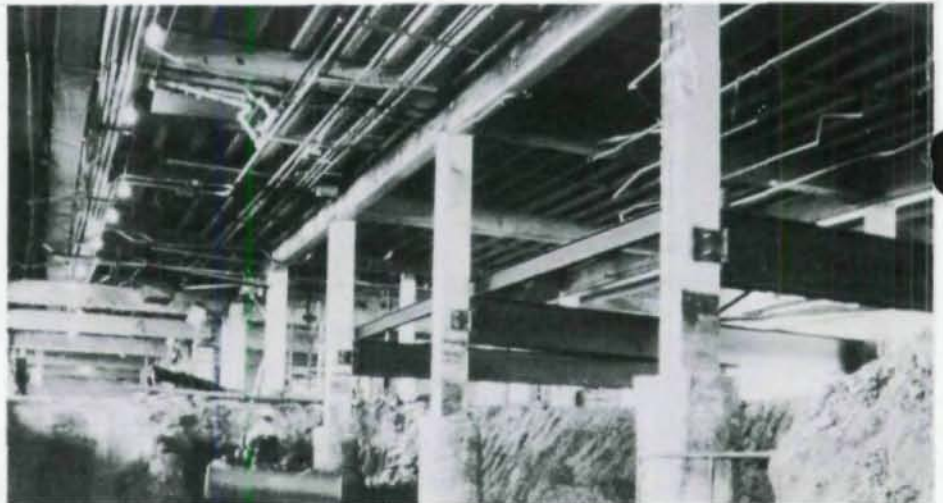
The steel bid package was included with the drilled-pier foundation package in August 1985, with bulk structural steel purchased from two mills. The first structural steel erection at Stapleton began Jan. 6, 1986. Design work continued through construction and final structural drawings for steel were completed in February 1986. Final erection of the major structural steel and structure was completed in June.

#### New Structure Wraps Existing Building

Passengers were unaware of structural construction occurring under, above and around the existing concourse. Nearly 2,700 tons of custom-fabricated steel, requiring tight tolerances to fit the existing structure, were installed basically undetected by the public. Demolition of unnecessary existing members occurred only after the new structural envelope was completed and sealed.

Layout areas were designated along the existing concourse so that miscellaneous framework could be assembled during night shifts and erected during the day. The steel for the main frames, however, had to be lifted into place across the in-use concourse within narrow construction limits established by aircraft parking criteria at night time.

The contractor commenced construction at the runway (field) end of the concourse



Temporary steel beam system to brace columns during excavation proved economical. Beams were re-used to frame new walkways.

with 9,000 sq. ft of new construction and proceeded toward the terminal on a carefully coordinated schedule. All personnel and all materials had to be met at guarded gates, then escorted to the construction area to maximize security.

Ramp work and steel erection proceeded toward the terminal in a carefully-coordinated schedule. Ramp replacement involved changing fuel lines, underground tanks, and electrical and communication lines. The CPM program used for coordination of critical dates with the client, was integrated with the detailed design-build, phase construction schedule. The contrac-

tor employed a full-time coordinator to interface with the airline's operations. Continuous interaction between members of the design and construction team was necessary since construction was proceeding at the same time as final design and working drawings.

All construction work was scheduled by CPM, with a special chart updated monthly to show graphically where construction was, what was yet to be done and what had been turned over to the airline. As construction proceeded around the existing concourse, temporary covered walkways and stairs were installed to provide



# INRYCO N·R·G FLOR<sup>®</sup>

## It's Entered A New Dimension.

Inryco NRG Flor<sup>®</sup> for steel frame construction provides a cost-efficient distribution system for your building's wiring management. And now it's better than ever, supported by the largest family of PLEC (power, lighting, electronics and communications) distribution systems in the industry.

**Nationwide distribution.** Inryco NRG Flor is now available all over the country through the Walker agent network. Your local Walker agent is an experienced PLEC systems professional, ready to work with you in designing an NRG Flor system to meet the specific needs of your building. And he'll be there to provide whatever service you need in the future.

**Backed by the top name in PLEC distribution.** All of the Inryco organization's structural expertise and experience—over 30 years of it—is still built into NRG Flor. But now it's also available through Walker, the

leader in design and development of PLEC distribution systems for over 60 years. So the combined experience of Inryco and Walker ensures that the PLEC distribution system designed for your building will meet the needs of its occupants for the life of the building.

*Find out more about what Inryco NRG Flor—backed by Inryco and Walker—has to offer. Call 1-800-222-PLEC (In Ohio 614-373-4441). Or write NRG Flor, P.O. Box 1828, Parkersburg, WV 26102.*

INRYCO  
N·R·G FLOR<sup>®</sup>

AVAILABLE THROUGH



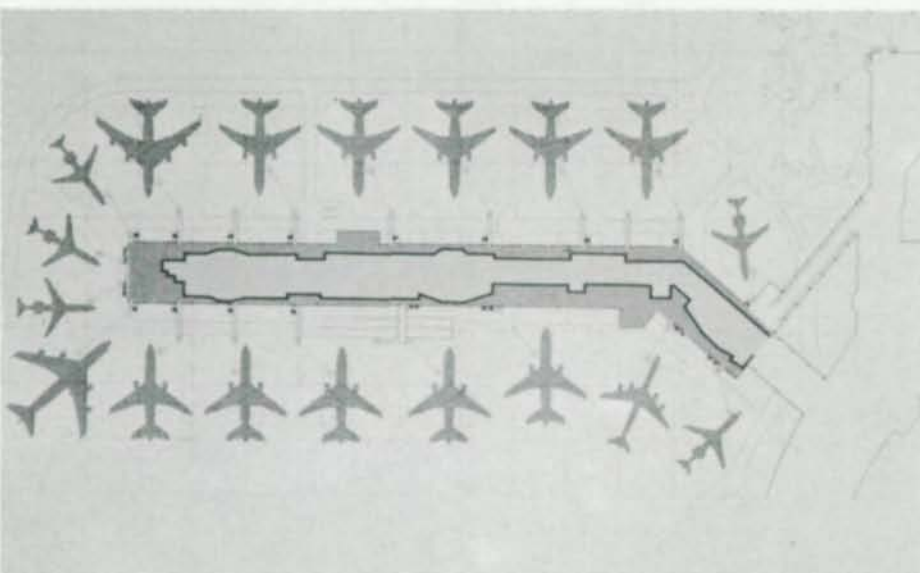
**Walker**

P.O. Box 1828, Parkersburg, WV 26102 (304) 485-1611

A DIVISION OF BUTLER MANUFACTURING COMPANY



*Existing structure was enveloped (above) by the new, using existing structure as work platform to construct new concourse and protect passengers. Enlarged concourse (l.) created by constructing steel superstructure around existing building.*



*Twenty-two gate concourse was made longer, wider and higher—without interrupting service.*

passenger access to the aircraft once the jetways and appendages were removed. The maximum number of gates that had to be ground-loaded at any one time was held to nine. Most of the time, only four were ground-loading at a given time.

After construction was completed in the new holding areas, located in the 30-ft addition along the length of the concourse, they were put into service while demolition of the existing areas took place. Temporary covered walkways were installed to provide passenger access through the demolition area. Following completion of the new side of the concourse and the pedestrian corridor, construction was completed on the old part of the concourse. Because all finish work in the new concourse was completed out of sight of United's passengers and employees, demolition of the existing concourse, which occurred at night, allowed a dramatic revelation of the new completed sections at daybreak.

In addition to erecting the structural steel and other operations at night, the contractor employed people full-time as wingtip-watchers in areas of intense construction to prevent any damage to aircrafts.

The contractor stated construction of the concourse was like building a 1,200 ft high high rise laying on its side, finishing it from the top down.

#### **Aesthetics and Architecture Achieved**

The architects designed interiors to simulate the shape of the spaces in an aircraft. The entire row of columns down the center of the existing concourse was removed to create a spacious, 52-ft wide pedestrian corridor. To further open up the space, alternating existing columns on each side of the concourse were also removed.

A new roof system the entire width of the concourse created an attic space to house all mechanical/electrical systems. This eliminated visual rooftop obstructions caused by the protrusion of mechanical/electrical units, minimizing the potential for roof leaks and providing easy access for maintenance. An extensive catwalk system runs the full 1,200 ft of the concourse.

The final 16-ft ceiling height, from the pedestrian corridor floor to the ceiling, was enhanced by large clerestory windows to introduce natural light and minimize the glare of direct sunlight. Colorado has over 300 days of sunlight annually, so the clerestory windows result in increased energy efficiency by reducing the need for artificial illumination. The curved ceiling shape diffuses light, producing a soothing effect of

You  
can't  
get  
heat  
treated  
plate  
any  
longer.



## STRUCTURAL DESIGN USING LOTUS 1-2-3® + ENERCALC™



Use LOTUS 1-2-3® as your personal structural designer. Your \$795, 26 program "library" supplies design & analysis in steel, timber, retaining walls, concrete, masonry and can perform structural analysis.

Forward thinking engineers will realize this software is REQUIRED MATERIAL in today's competitive design office, and our nationwide user's are available as impartial references. Receive our brochure or demonstration packages by contacting:

**ENERCALC™**

160 Newport Center Drive, Suite 125  
Newport Beach, CA 92660 • (714) 720-1865

*New United Airline's Concourse B is Grand Award winner in Consulting Engineers Council of Colorado 1987 Engineering Awards competition. Concourse now can handle 10 million passengers annually. Fast-tracking saved one year of design/construction time. Concourse was completed in 14 months, four ahead of schedule.*



soft light in the pedestrian corridor. The indirect lighting used on the corridor duplicates the natural light.

Upper-level walls of the concourse consist of a lightweight architectural system which enabled use of existing structural systems with only nominal modifications and strengthening. The walls are steel studs welded to the structural steel and covered with 5/8-in. gypsum sheathing and Alucobond aluminum panels. Approximately 125,000 sq. ft of brown-colored panels were used. Solar grey insulated glass is also part of the exterior walls.

A new and luxurious 21,500 sq. ft Red Carpet Room, relocated at the terminal building end of the concourse in a secured area, serves United Airline passengers from both concourses A and B. Security re-entry to use the VIP room is not required.

The concourse interior was designed for rugged use. Round versus square column corners were designed to reduce damage to both walls and luggage. Durable stainless steel column covers are an integral part of the structural system. Three moving walkways provide 485 linear feet of mechanized movement. Because the ground radar facility is directly across the field, that end of the concourse was beveled to deflect the radar waves upward, thus reducing interference.



# Or heavier.

Only Lukens offers heat treated plate that's as long as 890"—or that weighs 50 tons. We can also supply widths to 195". So the easiest way to fill your tall orders is to contact the Plate Products Division, Lukens Steel, Coatesville, PA 19320. (215) 383-2452

**Lukens Steel**  
The specialist in plate steels.

# Metal Building Bolts

Serving the nation with the world's largest stock of A-325 Bolts under one roof.



Ask for a copy of our Price Catalog featuring A325

We carry a complete line of bolts and nuts for the building trade.

**METAL BUILDING BOLTS CORPORATION**

10934 HAZELHURST, HOUSTON, TEXAS 77043  
TELEPHONE (713) 461-0505

## SAVE TIME AND MONEY CALCULATE CONNECTIONS with CONNECT<sup>®</sup> version 2.1

Software and Data Base for IBM PCs and Compatibles  
Proven, easy-to-use, moderate price

**DETAILERS, STRUCTURAL ENGINEERS**  
design, document, check:

Framed Beam Connections  
Seated Beam Connections  
Eccentric Connections  
Connections in Tension  
Moment Connections  
Hip and Valley Details  
Oblique bracing with Setbacks  
Web Stiffeners  
Triangulation  
and more.

Print a hard copy of calculations and/or save on disk.

Demo package available @ \$12.50.

Write or call today:

### Hess Technical Services

2389 Mill Grove Road  
Pittsburgh, PA 15241

(412) 831-2010 or (412) 833-7525



Spectacular new Red Carpet Club is part of remodeled concourse. Marble floors, contemporary furnishings and panoramic view of Rockies are exciting features.

### Ahead of Schedule, Within Budget

Construction was completed without the loss of a single day of business. The concourse design permitted continuous operations—with only two of the twenty-two gates out of service at any one time. The design, using a structural steel superstructure, provided a practical, economical solution. New construction could be interfaced with selective demolition and renovation, saving both time and money.

Completed at a cost of \$48 million, Concourse B is one of the largest remodeling projects ever undertaken in Denver. Morgan Douglass of United Airlines stated, "We are highly pleased with the architect's and engineer's design concept which enabled this extremely difficult project to be constructed with a minimum of inconvenience to the public and disruption to our Denver operations. This passenger concourse contains the latest in state-of-the-art technology associated with the movement of passengers, display of flight information and service amenities necessary to operate a large hub airport in the 1990's. This new technology is contained with a highly aesthetic environment. . ."

### Architect

Seracuse Lawler and Partners/  
Roybal and Associates (joint venture)  
Denver, Colorado

### Structural Engineer

Richard Weingardt Consultants, Inc.  
Denver, Colorado

### General Contractor

Hensel Phelps/Alvarado (joint venture)  
Greeley, Colorado

### Steel Erector

Derr and Gruenwald Construction Company  
Henderson, Colorado

### Owner

City and County of Denver

---

Richard Weingardt, P.E., is president of Richard Weingardt Consultants, Inc., a structural engineering firm in Denver, Colorado.

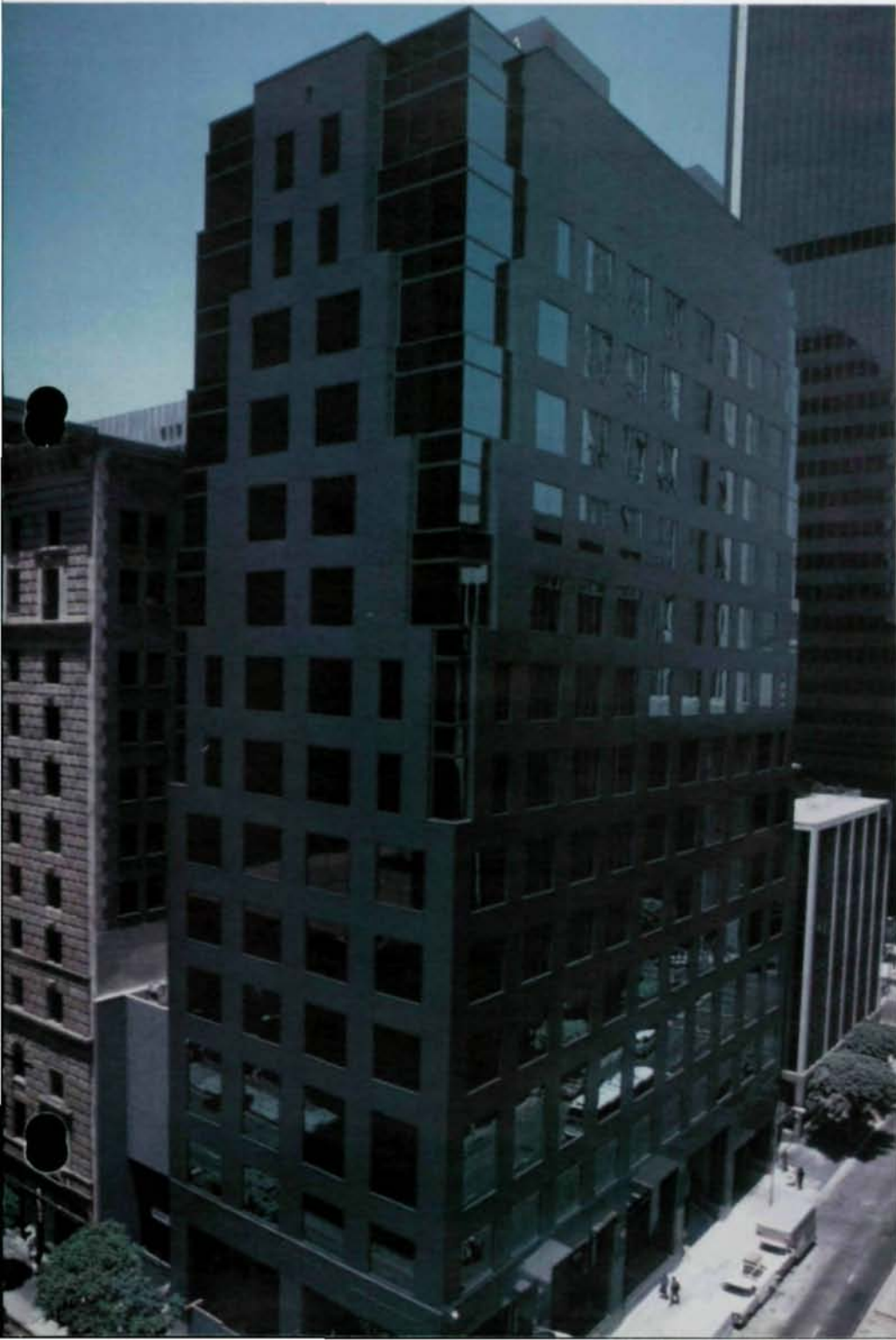
---

# Remodeling with Steel

## 655 SOUTH HOPE

### New Breath for an Old Site

by Pam Palmer and Gene Watanabe



The 655 South Hope Building, on a prime downtown Los Angeles site, posed an unprecedented renovation challenge. The building was originally designed in 1963 as an 18-story structure for Republic Federal Savings and Loan. But when an athletic club dropped its plans to house new facilities in the building, only eight floors were built.

In the next two decades, downtown Los Angeles grew up around this key site, now overshadowed by towering high rises of the city's new financial district and at the center of a downtown construction boom. When a property corporation acquired the building in 1985, it commissioned the Gensler and Associates to redesign this nondescript building and add nine new floors atop the original structure—nearly doubling its size. The existing steel frame, three levels of above-ground parking and basic building systems were to be preserved.

#### Create a Breathing Space

The new design for the 655 South Hope Building transformed the structure's drab appearance with an elegant stepped facade. Corners were notched to give the building a receding crown which recalls the spirit of such traditional buildings as the Chrysler Building and the Los Angeles City Hall. The inward slant at the top creates "breathing" space between the building and its neighbors, anchoring it in its downtown canyon. The setbacks also reduced the floor space of higher floors to meet local building code regulations restricting the total square footage to 100,000 sq. ft. A major renovation requiring addition of new floors on top of an existing structure was a first for Los Angeles. Initial studies conducted by the structural engineer for the project showed that 17 stories would be the maximum possible under new seismic and building code regulations.

Since the foundation was originally built

# VULCRAFT EXPERIENCE SIMP



As the only national company in the United States that designs and manufactures joists, joist girders and steel deck, Vulcraft works with the relationships between joists and deck every day. So, they have a depth of experience that can often simplify many seemingly complex problems.

The Woodfield at the Crossing office complex in Indianapolis, Indiana is a good example. The open web configuration of the steel joists was ideal for the use of suspended,

energy efficient heat pumps. But, the 3' spacing between joists which is needed to support standard floor deck was not adequate for the installation and maintenance of the heat pumps. So, 5' spacings were initially specified wherever the heat pump units would be installed.

However, varying the joist spacings would make construction complicated, time consuming and expensive. This is where Vulcraft was able to help.

*5-foot spacing between Vulcraft joists permits easy installation and maintenance of heat pump units.*

# SIMPLIFIED A COMPLEX PROBLEM.



*The Woodfield at The Crossing office complex in Indianapolis used 216 tons of Vulcraft joists and 169,000 sq. ft. of Vulcraft steel deck.*

After reviewing the specifications and discussing the job with those involved, Vulcraft engineers came up with an idea that reduced the number of joists needed, sped up erection time, and stayed within budget. Drawing on their extensive application experience, Vulcraft recommended changing the joist size from the original "H" series to the "LH" series in order to provide a uniform 5' spacing throughout the job. In addition, Vulcraft proposed using 2" composite deck instead of standard  $\frac{9}{16}$ " form deck. Thus, a deeper slab was created without using any more concrete and transitory vibration was reduced.

By taking advantage of Vulcraft's experience as well as their products, construction of the Woodfield office complex was greatly simplified. In addition, Vulcraft's recommendations added greater value and flexibility to the overall design.

For more information about Vulcraft steel joists, joist girders and steel deck, or for copies of our joist and steel deck catalogs, contact the nearest Vulcraft plant listed below. Or see Sweet's 05100/VUL and 05300/VUL.

P.O. Box 637, Brigham City, UT 84302 801/734-9433  
P.O. Box F-2, Florence, SC 29502 803/662-0381  
P.O. Box 169, Fort Payne, AL 35967 205/845-2460  
P.O. Box 186, Grapeland, TX 75844 409/687-4665  
P.O. Box 59, Norfolk, NE 68701 402/644-8500  
P.O. Box 1000, St. Joe, IN 46785 219/337-5411

## **VULCRAFT**

A Division of Nucor Corporation

Owner: Phillip R. Duke & Associates; Contractor: Duke Construction Management Inc.;  
Architect: Cooper Carry & Associates, Inc.; Consulting Engineer: K. Gene Miller Inc.;  
Steel Fabricator: Ferguson Steel Co.



*First for Los Angeles, a major renovation added floors to existing structure. Complex framing, plus tight site conditions, proved construction challenge.*

to accommodate 18 floors, little strengthening of lower floors was needed. The first-story columns were boxed in to make them stronger. Covered steel plates were used to create the boxed column to replace the original wide-flange columns. The existing structure, based on three rows of columns per floor, was extended into the new stories to distribute the load to the ground footings. Engineering studies showed that continuous columns would be much more cost effective than to create a transfer at the ninth floor.

#### **Complex Framing and Site**

Columns for the new floors were welded with full penetration welds onto the stubs of existing columns at the roof of the old building. Because the columns could not be staggered or stepped outward to accommodate the new setback design, the steel structure was tapered on the new floors, creating a very complex framing condition with unusual structural angles. The structural design, however, provides column-free glazed corner offices on upper floors, amenities normally offered only in much larger office buildings.

An additional 300 sq. ft. was added on upper stories with special framing along the back side of the building which is concealed within the parking structure. Extending the building towards the property line and enlarging the floor size permitted much more efficient interior space planning by tenants. Grade A36 steel was used for beams and girders and A572 Gr. 50 steel was used for columns. The floor system was comprised of steel beams, metal decking and lightweight concrete flooring, with composite flooring used on the floor beams and girders.

Access to this very tight site also proved to be a construction challenge. The additional floors were added in four vertical sections with the steel frame extended up 17 floors before the next section was begun. The more than 2,000 bolts used on the building were installed carefully to prevent ends falling on pedestrians.

The building offers a striking facade with a lightweight metal skin chosen to harmonize with the dark green granite base of the first three floors. The metal panels, green reflective glass and gloss window frames were chosen to create a quiet beauty appropriate to the quality of offices in the building. Subtle changes in finishes in the monochromatic scheme provide for color and textural differentiations. The green granite, for instance, contains two different finishes in the single colorstone. The steel-faced aluminum core panels that make up the curtain wall are finished in

# FIRST. LAST. ALWAYS.

We created the *first* name in computer aided steel detailing — SDS/2. The *last* system you will ever need to buy. Because we are *always* enhancing our software to achieve unsurpassed efficiencies. More structural steel is detailed by SDS/2 than with any other computer aided system.

First. Last. Always. SDS/2.

**DESIGN  
DATA** 

"Software For The Professional"  
800-443-0782

*It's Time ...*

Duranar. The curtain wall system, designed by H.H. Robertson, required a custom application because of the facade's complex stepped geometry.

The completed building includes three floors for retail and financial services, three for parking and 11 of high quality office space. The 17th floor houses the mechanical system and penthouse. To capture an additional 3,500 sq. ft., the remaining space was designed as a penthouse office space connected to the 16th floor, providing some of the most dramatic office views in the city. The 7,500-sq. ft. floors are ideal for small or mid-size companies which normally might not be able to enjoy the advantages of full-floor occupancy. The plan configuration, wider and with three sides of glass, makes possible efficient and flexible planning.

Building systems have been upgraded to meet handicapped and life-safety standards. A new elevator provides handicapped access to the lobby from the sidewalk. A future MetroRail station, with entrance from the south side of the building at ground level, has been integrated into the design.

Reconstruction of this outdated building into a sophisticated structure in tune with its downtown Los Angeles neighbors testi-

fies to the possibilities of building renovation. A safer and more harmonious project has been developed through the revitalization process, allowing it to compete successfully with the active downtown office market. □

#### Architect

Gensler and Associates/Architects  
Los Angeles, California

#### Structural Engineer

Brandow and Johnson

#### General Contractor

Robert E. McKee

#### Steel Fabricator

Central Industrial Engineering Company  
Santa Fe Springs, California

#### Owner

Hammerson Property Corporation  
Los Angeles, California

---

*Pam Palmer* is a senior associate and *Gene Watanabe* an associate with the architectural firm of Gensler and Associates, Los Angeles, California.

---



**THE**  
**SUPERCENTER**



# Next Time You Need 100 Tons Or More, Buy It The Easy Way.

100 tons =  
15 African elephants  
(approx.)  
or  
your WF order  
for SuperCenter  
prices and service.

Call Levinson on  
smaller orders, too  
... including plates  
and bars!

## The old way is a struggle:

You call the mill. They're rolling your WF sections in a few weeks—some of them. So you call another mill. Then a service center, which is expensive. Now your steel is coming from three or four directions, and the stuff you need first gets there last (or not at all), and are these the right test reports?

## Next time, try the SuperCenter.

Operated by Levinson Steel in Pittsburgh, PA, the SuperCenter is the fast, low-cost way to fill structural orders of 100 tons or more.

- **EVERY WF BEAM YOU NEED** is here, from the smallest to the biggest sections . . . in A-36 and A-588 and A-572.
- **PRICES** are competitive.
- **SERVICE** is impeccable. Delivery when you need it, as you need it, cut to exact size. With certified test reports through the Levinson Registered Steels program.

If you're within delivery range of Pittsburgh, does it sound like the SuperCenter could take a load off your mind?

Beams in stock:  
W 8 × 31  
to  
W 36 × 230  
and everything  
in between.



# 1-800-LEVINSON

The Levinson Steel Company, P.O. Box 1617, Pittsburgh, PA 15230

# Alternate Design

## STEEL FIELDS THE CURVES ON COMPLEX INTERCHANGE

Tight geometric requirements made curved steel plate girders the most logical choice for this direct interchange between I-20 and I-459 in Jefferson County, just east of Birmingham, Ala. The combination of tight vertical clearances, minimum structural depth available for four-level stacking and curved spans of almost 200 ft practically eliminated consideration of alternative structures.

Basically, the interchange has six ramps at grade and six bridge structures:

- **Bridge No. 1 EBL:** I-20 EBL over Ramps 124 and 126; overall length 541 ft; spans 120.5 ft-150 ft-150 ft-120.5 ft continuous; 1°30-ft curve; approximately 45° skew; 56-ft roadway; web plate  $\frac{3}{8}$  in. x 54 in.
- **Bridge No. 1 WBL:** I-20 WBL over Ramps 124 and 126; overall length 541 ft; spans 120.5 ft-150 ft-150 ft-120.5 ft continuous; 1°30-ft curve; approximately 45° skew; 56-ft roadway; web plate  $\frac{3}{8}$  in. x 54 in.
- **Bridge No. 2 NBL:** I-459 NBL over I-20 EBL & WBL; overall length 815 ft; spans 141 ft-141 ft continuous, 120 ft-170 ft-120 ft continuous, 123-ft simple span; tangent alignment; 56-ft roadway; web plate  $\frac{3}{8}$  in. x 56 in.
- **Bridge No. 2 SBL:** I-459 SBL over I-20 EBL & WBL; overall length 807 ft; spans 127 ft simple span, 120 ft-170 ft-120 ft continuous, 135 ft-135 ft continuous; tangent alignment; 56-ft roadway; web plate  $\frac{3}{8}$  in. x 56 in.
- **Bridge No. 3:** Ramp 121 over I-459 NBL & SBL; overall length 1,065 ft; spans 131 ft-131 ft continuous, 166 ft-194 ft-166 ft continuous, 138.5 ft-138.5 ft continuous; 3°31-ft curve; 39 ft-3 in. roadway; web plate  $\frac{3}{8}$  in. x 60 in.
- **Bridge No. 4:** Ramp 123 over I-459 NBL & SBL; overall length 895 ft; spans 127 ft-127 ft continuous, 145 ft-182 ft-182 ft-132 ft continuous; 5°07-ft curve; 39 ft-3 in. roadway; web plate  $\frac{3}{8}$  in. x 60 in.



### Lighter Sections Not Adequate

ASTM A36 steel was chosen for this interchange since lighter sections would not have been adequate for deflection requirements of L/1000 for curved girders of the required depth and span. Stress ranges were also reduced by using heavier sections. Total structural steel superstructure weight is about 5,113 tons. This interchange was designed in the late 1970s, but bids for the bridges were not taken until January, 1982. Bidding was very close, with the low bid about 14% below the engineer's estimate.

For horizontal clearance requirements and for aesthetics, all structures were designed with hammerhead piers on rock footings, with the exception of the dual I-20 bridges, where the extreme skew resulted in cap lengths ranging up to 85 ft. Massive rectangular, three-column framed bents were employed for these bridges to be more compatible with the heavy single shaft piers used for the higher levels. Because of excessive blasting during construction, some footings had to be redesigned as pile footings with short piles extending to sound rock. For the top level bridges, the hammerhead piers range up to about 96 ft from top of cap to bottom of footing. Pier shafts are 8 ft x 4 ft at bottom of cap and are battered  $\frac{1}{2}$  in. per ft (each face) normal to the roadway and  $\frac{1}{4}$  in. per foot (each face) parallel to the roadway. Pier shafts for the 56-ft roadway I-459 bridges are 12 ft x 4 ft at bottom of cap, with battered faces as noted above for the higher bridges. Pier caps for the I-459 bridges have cantilever lengths of 22 ft-3 in. and are about 11 ft deep at the pier shaft with up to four rows of reinforcement in tops of caps.

An interesting and somewhat unusual design problem occurred at each of the top level bridges (Ramps 121 and 123) where practical span lengths required piers to be placed in the I-459 median width of 20 ft curb to curb. Vertical clearance provided is not enough to permit conventional pier caps extending over the I-459 roadways. At these locations, special steel girder pier caps are required. Pier caps were fabricated integrally with the longitudinal girders. Webs of the five longitudinal girders were cut for penetration by the pier cap girder, maintaining continuity of all flanges. Beveled fill plates were shop-fitted and welded between longitudinal girder flanges and pier cap girder flanges. Two field splices were provided in each pier cap girder. This permitted field sections of a pier cap girder section and two longitudinal girders (one girder for center section) extending to the longitudinal girder field splice locations in each adjacent span, with all diaphragms

and lateral bracing connected. Temporary diaphragms were provided adjacent to field splices. Stress ranges were held to Category E allowables and special attention was given to grinding smooth radial transitions at the longitudinal girder flange to web-weld terminations at the penetrations for the pier cap girder. Heavy, fitted four-angle bolted connections were employed for web connections at these points. The pier cap girders are supported by two fixed rockers on 18-ft centers, which are supported by stub pier cap cantilevers which do not extend over the I-459 roadways.

Painted in Alabama Highway's green and supported on massive, graceful high

piers, these curved steel girders blend harmoniously with the natural green and rock-colored setting to create an aesthetically pleasing interchange. □

### Designer

David Volkert & Associates  
Mobile, Alabama

### General Contractor

R.R. Dawson Bridge Co.  
Bessemer, Alabama

### Steel Fabricator

Gamble's, Inc.  
Montgomery, Alabama

### Owner

Alabama Highway Department

**WE  
PUT  
100  
YEARS  
OF  
EXPERIENCE  
IN  
EVERY  
BOLT WE MAKE**



We operate the largest facility in the country for making big and special bolts. Just as important, we're big on dependable service and reliable delivery.

We're St. Louis Screw & Bolt and we make a full range of heavy structural bolts. Our entire manufactured product line, including Types I and III, is made from domestic materials and tested in our St. Louis plant. We're big on quality, too.

*After 100 years, we know big bolts in a big way.*

**ST. LOUIS SCREW & BOLT COMPANY**

6901 N. Broadway/St. Louis, MO 63147/(314) 389-7500



SINCE 1887



MEMBER  
INDUSTRIAL  
FASTENERS  
INSTITUTE



ASSOCIATE MEMBER

## STRUCTURAL DESIGN CONSIDERATIONS FOR STAMPING FACILITIES

by Henry L. Ritter

Stamping facilities historically have involved heavy steel construction with high, wide crane bays and floor areas designed to carry presses, die storage and material-handling vehicles. Today's modern stamping facilities often have larger, more sophisticated presses and a vast array of automatic material-handling systems to convey and store the product during its evolution from a coil of steel or flat sheet to a finished stamping.

Much of this feature focuses on the press line, particularly the automotive press line and the building systems at or below the floor line where structural steel, reinforced concrete and sometimes wood all play a role. The structural material used in the superstructure is almost exclusively steel. Steel columns support steel crane girders, equipment and control platforms and long-span roof systems with steel trusses, purlins and the like.

Another area where structural steel has no equal is for high-density storage rack structures. More and more use is being made of automatic storage and retrieval systems in stamping plants. In such systems, a computer-controlled stacker crane loads and unloads storage rack cubicles containing coils, small dies, blank sheets or stamped parts, from rack structures which may exceed 100 ft in height.

The heart of a stamping facility is the press line where the part starts as a flat sheet of steel and progresses through a series of stampings which form and trim it to a desired configuration. A press line may consist of a series of individual presses—perhaps five, six or seven, depending on the complexities of the part to be made, or as few as one or two presses if a transfer press is used. A transfer press, which automatically moves the stamping through a series of punching stations within one bed of the press, may have one or more beds.



Building bay with large transfer press (above). Below, two operating press lines were installed within one wide building bay.



Modern press lines employ a large degree of automation whether they are made up of individual presses or involve a transfer press. Conveyors and other transfer devices automatically move the stamping through the presses; die changes, which used to take hours, are now made in minutes with motor-driven bolster carriages that move in and out of the press beds on rails perpendicular to the flow of the stampings. The presses are programmed and controlled by vast arrays of panels and wiring.

**Parallel Flow More Conventional**

Press lines can be laid out so the product flow is either parallel or perpendicular to the length of the bay. It is more conventional to have the product flow parallel to the length of the bay. In this arrangement, one overhead crane can service the entire press line and also move dies to and from the press bolster carriages and store the dies on floor areas in the same bay. The bay must be wide enough to permit the crane to load and unload the dies from the bolster carriages free of the press and any control panels or other equipment located on the floor or, more typically, on elevated platforms near or on column lines. For larger transfer presses, this can mean bay widths up to 100 feet if a longitudinal aisle is included.

The length of a bay is a function of the space requirements of the press line(s) plus any die storage area requirements. In some cases, the length of a bay may be extended to include provisions for steel receiving, storage and possible blanker press operations. Blanker presses are used when the steel is received in coil form. A blanker line operation will uncoil the steel and cut the roll into flat rectangular or trapezoidal shapes. In larger facilities, steel receiving, steel storage and blanker operations are often contained in a separate crane bay.

Die changes in large presses are often made with the aid of top running overhead or gantry cranes. When full bay coverage overhead cranes are used, the bridge of the crane and hook must clear the presses. This results in heights from first floor to underside of roof structure of 45, 50 or even 55 ft. Large presses have large heavy dies. Overhead cranes sized to carry dies in older stamping facilities would typically have a capacity around 30 tons. Today, 50 to 80-ton capacity cranes are not unusual. While the overall size and height of the press bay are determined by layout and operational requirements, the structural engineer has some interesting design decisions to make especially with regard to the longitudinal elevations of the bay.

**Interesting Design Decisions**

Depending on the crane capacity and resulting deflections, the steel columns can be designed as a single deep building column with brackets for the crane girders, or steel columns can be placed under the crane girders instead of brackets. In cases of multiple columns, there are an endless variety of configurations and means to connect the individual columns. A single column has the advantage in that it takes up less floor space. Although the steel weight of a single column may be more than individual columns, the fabrication costs may be less because of the fewer pieces.

Many layouts, especially those where the material flow is parallel to the length of the bay, can tolerate close column spac-

ings on the longitudinal column lines. For example, column spacings of 20 ft are still wide enough to permit an aisle between columns. From a cost standpoint, the most economical column spacing is usually 20 to 25 ft. A full-height vertical bracing system is ideal. Diagonal bracing need only be placed in a few select bays. Even if the layout will not tolerate diagonal bracing down to the floor line, usually a minimum headroom height can be established for a strut line with diagonal cross bracing above that height. If elevated control platforms are used, the platform girders can sometimes double as a strut in the bracing system.

The space below the first floor, in addition to supporting the press, is used to

**Structural Software Co.**

2839 Peters Creek Rd.  
Roanoke, Virginia 24019  
(703) 362-9118

**COMPUTER DETAILING UNDER \$30,000**

Computer Detailing is an inexpensive structural steel detailing program that not only complete details but will also design connections in a wide variety of shop and/or field connections.

- ‡ Skewed Beams
- ‡ Moment Connections
- ‡ Erection Sequences
- ‡ Tee Connections
- ‡ Shear Plates
- ‡ Knifed Connections
- ‡ Stiffener and Shear Plates
- ‡ One-sided Connections
- ‡ Advance Bill of Material
- ‡ Combines all Identical Members
- ‡ Shows Total Footage of Weld
- ‡ Handles all Shapes: Wide Flange, Tube, Channel, Pipe, etc.
- ‡ Interfaces to Structural Software Estimating Program
- ‡ Interfaces to Autocad
- ‡ Interfaces to Structural Software Production Control Program
- ‡ Shop and Field Bolt Summaries
- ‡ Cantilevers
- ‡ Handles Joists and Girder Connections
- ‡ End Plates
- ‡ Splice Plates
- ‡ Sloping Beams
- ‡ Plots Bill of Material showing Piece Weights, Assembles Weights and Sheet Total
- ‡ Fast to Input
- ‡ Easy Edits
- ‡ Plain End
- ‡ Frame Over Columns
- ‡ Frame Past Columns
- ‡ Non-Flush Beam Framing
- ‡ Off Column Center Framing
- ‡ Column Splices
- ‡ Interfaces to CNC equipment
- ‡ Erections Plans
- ‡ Designs connections based on calculations

**Accessories**

- ‡ Toe Plates
- ‡ Support Angles
- ‡ Curb Angles
- ‡ Web Stiffeners
- ‡ Top Flange, Bottom Flange, Web Holes Pattern

Please send more information on:

- Accounting
- Detailing Structural
- Estimating Structural
- Inventory
- Mill Orders
- Mulling to Length
- Plate Nesting
- Point of Sale
- Production Control
- Purchase Orders



Structural Software Co.  
2839 Peters Creek Rd.  
Roanoke, Virginia 24019  
(703) 362-9118



Name \_\_\_\_\_  
Company \_\_\_\_\_  
Address \_\_\_\_\_  
City \_\_\_\_\_ State \_\_\_\_\_ Zip \_\_\_\_\_  
Phone \_\_\_\_\_

# MICROCOMPUTER STRUCTURAL ANALYSIS SOFTWARE

## BEAMS AND FRAMES

**BEAMS AND FRAMES** is an interactive computer program that operates on IBM Personal Computers. It performs structural analyses of continuous beams and two-dimensional frame structures for a variety of loading and support conditions. It is user friendly, requires a minimum of input data, provides accurate results and executes in several seconds.

### Capabilities and Limitations

- Interactive Beam and 2-D Frame Analysis Program.
- Continuous Beams—Twenty Spans Maximum.
- Planar Frames—Multi-Bay/Multi-Story.
- Moment Releases for Members.
- Concentrated Nodal Loads.
- Member Loads—Concentrated, Distributed and Thermal.
- Projected Loads on Sloping Members.
- Enforced Displacements at Supports
- Spring Supports.
- Display Menus of Program Options.
- Output Displayed on Monitor and/or Printer.
- Hardware Requirements: IBM-PC or Compatible with 256K Ram, Floppy Drive, Monitor and Printer.

BEAMS AND FRAMES Cost...\$295.00  
Trial Offer (1 Month)...\$ 25.00

## FRAME3D

**FRAME3D** is a general purpose computer program that operates on IBM Personal Computers. It performs structural analyses of three dimensional frames and trusses for a variety of loading and support conditions. Input data files consisting of line data in free field format must be created as input to FRAME3D.

### Capabilities and Limitations

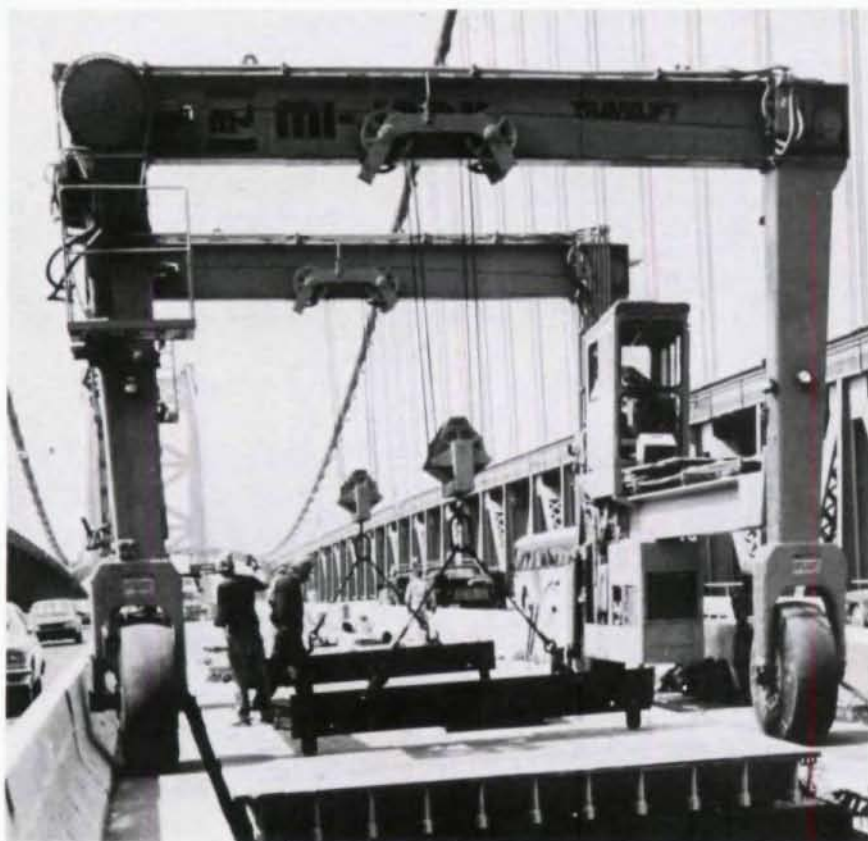
- General Purpose 3-D Frame Analysis Program.
- Input by Means of Input Data Files.
- Beam, Truss and Spring Elements.
- 2000 Elements Maximum. 2000 Nodes Maximum.
- 50 Load Cases and 10 Load Combinations.
- Arbitrary Numbering of Nodes and Elements.
- Node and Element Generation.
- Concentrated Nodal Loads and Member Loads.
- Gravity (Seismic) Loads in Three Directions.
- Enforced Displacements at any Node.
- Plotting of Model Geometry and Distorted Shapes.
- Hardware Requirements: IBM PC or Compatible with 512K Ram, Floppy Drive, Hard Disk (Recommended), 8087 Coprocessor (Recommended), Monitor and Printer.

FRAME3D Cost...\$495.00  
Trial Offer (1 Month)...\$ 40.00

For More Information Call or Write:

Compu-tec Engineering • 300 Chesterfield Center Suite 205 • Chesterfield, MO 63017 • (314) 532-4062

## Spanning the gap in bridge construction



A single Mi-Jack TRAVELIFT crane replaced two hydraulic boom cranes and numerous hydraulic jacks on the Ben Franklin Bridge renovation project, reducing equipment and maintenance costs, personnel requirements and extending the hours worked per day.

Installation of new orthotropic bridge panels took just half the time required previously. Traffic flow on the bridge was maintained in both directions for the duration of the construction project.

A spokesman for the construction firm said, "The TRAVELIFT crane has met all our needs." And no wonder! Backed by 30 years of experience and over \$7,000,000 in spare parts inventories nationwide, Mi-Jack's Service and Parts departments specialize in keeping machine downtime to a minimum.

Let a Mi-Jack representative show you how a TRAVELIFT crane can span the gap in your next bridge construction project.

Mi-Jack TRAVELIFT, 3111 West 167th Street, Hazel Crest, IL 60429. (312) 596-5200.

house tanks and equipment related to the presses, sometimes electrical substations and normally a conveyor system to carry the scrap pieces from the presses directly to railroad cars or truck or first to a baling machine. Access requirements from the first floor to the space below also must be considered. The choice between individual press pits and connecting scrap tunnels versus a full basement area is often an economic decision based on construction costs. Whether individual pits or full basement, the basement or pit to first floor height for large press installations is normally from 16 to 20 ft.

Transfer presses, automated conveyors and automated bolsters are all relatively new terms, or at least new in widespread use. To put things in perspective, consider the typical press plant of 30-40 years ago. A key word in such plants, especially a car-producing plant, was flexibility. Vehicle model changes were frequent and involved major retooling and significantly different stampings. This often required moving presses to form new lines. Because of this, many facilities were constructed of tiered or layered steel press framing so the upper tiers of framing could be disassembled and moved to the new location.

**Rethinking the Process**

The use of transfer presses, especially large transfer presses, has generated a rethinking of the concept of flexibility. Large transfer presses weigh millions of pounds and take months to assemble. To move a large transfer press after installation is not feasible, in most situations. Thus, the generally accepted view is that the initial location of a large transfer press is its permanent location.

Presses are supported by press legs or feet. Single-bed presses have four legs, double-bed presses generally six legs, while three-bed presses generally have eight. Single-bed presses can be supported by either steel girders or concrete piers. Multi-bed transfer presses are most often supported direct by concrete piers or in some cases by girders paralleling the long axis (direction of material flow) of the press. Regardless of the method of support, deflection under each press leg must be carefully controlled and differential deflection or foundation settlement must be accounted for or avoided. This is especially important on multi-bed presses where differential deflection or settlement under a press leg could fracture a press bed.

The press bed must be installed dead level at the proper elevation with respect to the adjacent floor. Levelness is imperative to the press operation. The proper eleva-

tion is necessary to permit the bolster carriage and die to travel on level rails from within the press bed to the adjacent flooring. The top of bolster rail is normally designed to be at or slightly above the finish floor elevation. If the rails are not level throughout, the bolster movement may be impeded. If the rails are set low with respect to the adjacent floor surface, the bottom of the bolster carriage may hit the floor. To obtain the proper elevations and levelness, bearing plate surfaces are often specified to be finished in a level plane and bolster rail support beam top flanges are specified to be straightened to a tight levelness tolerance such as within  $\pm 1/32$  in. of design elevation over the entire top surface.

Press-bearing plates and bolster support beam elevations should be set with surveying with precision instruments handled by an experienced crew. Final setting of the press and bolster rail elevations are frequently made with the use of full bearing shim plates under the legs and bolster rails. It is also advisable to establish a permanent benchmark elevation for checking press leg elevations after installation.

Floor areas in press plants are designed for heavy loads. Die and steel coil storage can result in floor loading requirements in

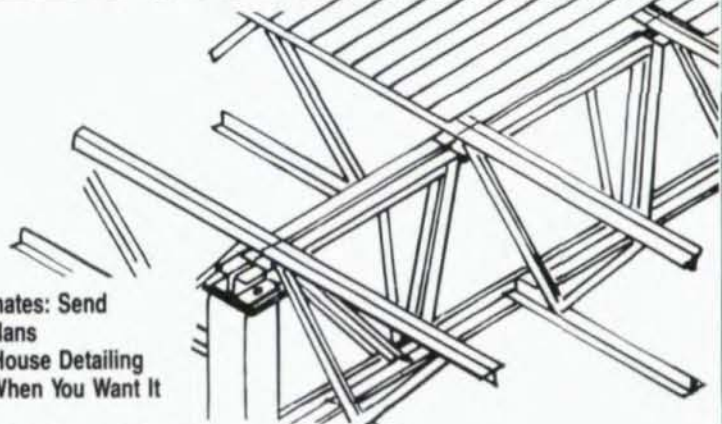
thousands of pounds per sq. ft. Forklift trucks, die carts and other vehicles are used widely in most plants. The effect of large concentrated wheel loads can often govern the design of floor beams, even when large uniform storage loads are included. The selection of vehicles with more and wider wheels can result in substantial savings in floor system costs.

**Modular Repeat Configuration**

When large presses are involved and "flexibility" for relocation is not a consideration, the floor framing in supported floor areas frequently can be laid out in modular repeat bay fashion. Spacing of the steel floor beams is normally governed by span capabilities of the floor surface—checkered plate, concrete or laminated hard wood panels, or combinations thereof. Because of the heavy loads, it is generally advisable to keep column spacings as close as the pit or basement layout will permit. Basement bay sizes of 200-400 sq. ft. of plan area are not uncommon.

The floor framing immediately adjacent to presses can be rather complicated, especially when transfer presses are involved. The irregular shape of the press, horizontal shafts, vertical shafts, inclined shafts, piping, conduits, access to the

**METAL DECKS  
STEEL JOISTS**



- **Fast Estimates: Send Us Your Plans**
- **Quick In-House Detailing**
- **Delivery When You Want It**

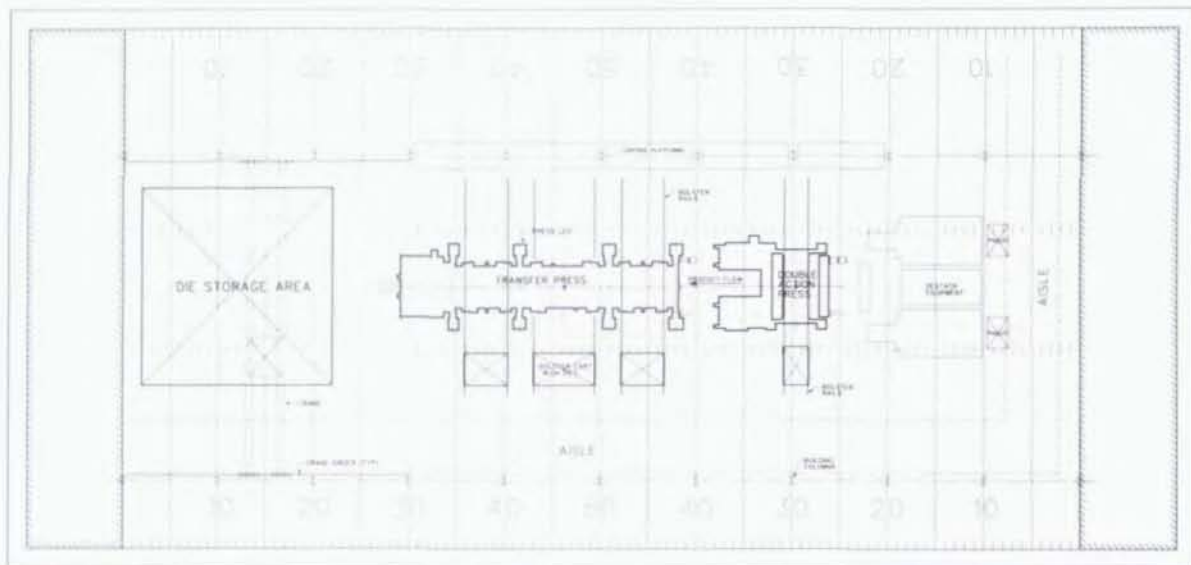
*For over 32 years, Riopelle has been providing customers with high quality, S.J.I. Specification steel bar joists.*

*We serve all fabricators and structural engineers. Our large volume assures both fast delivery and highly-competitive quotes. No job is too big or too small.*

*For unbeatable prices and favorable credit terms, give us a call today.*



8817 West Lynx Avenue  
Milwaukee, Wisconsin  
53225-1833  
(414) 353-8080 CALL COLLECT  
Jim VanDien • Dan Zane  
FAX: 414-353-8093



Large transfer press line superimposed on football field.

press, scrap chutes, recessed floor areas for equipment, slots in the flooring for bolster carriage drive mechanisms, etc. are some of the items that impact the framing. Fortunately, structural steel affords the flexibility to allow members to be cut, stiffened or reinforced into an endless variety of configurations to suit conditions. Most of the framing immediately adjacent to the presses cannot be installed until the bed of the press is in place. Bolster support beams are normally supported by brackets

on the press itself; press legs normally extend well beyond the bed width and require framing on or over such areas.

The logistics of shipping, rigging and assembling large transfer presses are elaborate, time-consuming and costly. Individual components such as press beds and crowns require special transportation because of large size and heavy weight. Specially fabricated trailers two traffic lanes wide with many axles for load distribution, or specially fabricated railroad cars, have

been used to transport such components. Upon arrival at the site, the parts must be lifted, moved, subassembled into larger components, and then again lifted and moved into the press position and then further assembled. These operations are considerations in the building layout and design. For example, the subassembly of press parts prior to installing the bed takes floor space. If that floor space is the future die storage area in the same bay as the transfer press, the final movement is made much easier. In situations where floor space is not available within the stamping facility, lightweight, weathertight steel buildings have been erected for this purpose. Such buildings can be used for storage or other functions.

Hydraulic gantry cranes, normally four tower units, are frequently used to lift major components such as subassembled press beds. To distribute the floor load, large runner beams are used under the gantry crane rails. Some large, multi-bed transfer presses have required gantry crane capacities in the range of 1,200 tons. The assembled press weight can exceed 5 million lbs. on some of the larger transfer presses. Overhead building cranes may be useful in installing some of the lighter components.

In summary, today's stamping facilities have complex, sometimes huge presses with sophisticated material handling equipment resulting in an endless array of layout, logistical and framing considerations. The strength and versatility of structural steel make it the ideal material, adaptable to the myriad building requirements of modern stamping plants. □

Henry L. Ritter, P.E., is a director and manager of structural and civil engineering with Albert Kahn Associates, Inc., Detroit.



**JEFF DAVIES** says:

Let me solve your **INDETERMINACY** about how to handle complex analysis problems, call for a **FREE** copy of our **SUPER SPACE** program:



With our user-friendly **SUPER SPACE** program you can analyze multistory buildings, towers and almost any other 2d or 3d structure of up to 500 joints and 2000 members on your IBM PC/XT/AT.

Why are we doing this? Because we know that you will be so happy with **SPACE**, that you will purchase other steel, timber, and concrete analysis and design programs from us.

This incredible offer expires September 30, 1987, so **CALL ME NOW AT 1-800-635-6366** (dial tone 814).

The Most Productive Structural Design Software Since 1966

**STRUCTURAL ANALYSIS, INC.**

30 S.E. Seventh St., Suite D2, Dept. J4 • Boca Raton, FL 33432  
1-800-635-6366 (dial tone 814) or 1-305-392-6597

\* \$29 charge for materials and handling. (Foreign orders add \$25 for air mail) Offer expires September 30, 1987. Florida residents add sales tax. VISA, Mastercard welcome.



# Steel Notes

## THREE SCHOLARSHIP WINNERS NAMED

Kevin R. Smith, a student at the University of Washington, was awarded the \$5,000 AISC/Klingelhofer Scholarship. Smith expects to receive his Bachelor of Science degree in civil engineering (structures option) in December 1988. The AISC/Klingelhofer Award was offered to undergraduates in civil or architectural engineering schools in the Pacific Northwest states of Washington, Oregon and Idaho this year. Next year, it will be available in the New England states, except Massachusetts.

Texas A & M University student Scott A. Moehlman receives the \$5,000 Stupp Brothers Scholarship. Moehlman plans to obtain his Bachelor of Science degree in civil engineering (structures option) in May 1988. The Stupp Brothers Scholarship Award was available in Texas and New Mexico. In 1988, it will be offered to schools in Nevada, Arizona, Alaska and non-urban areas of California.

Anders E. Carlson of Cornell University was the winner of the \$5,000 AISC/USS Scholarship. Carlson is studying structural engineering and expects to receive his Bachelor of Science degree in May 1988. The AISC/USS Scholarship was offered in Upstate New York schools. Schools in Tennessee, North and South Carolina could benefit from the scholarship next year.

All three annual scholarships were offered by the AISC Education Foundation.

## AISC BANQUET TO HONOR AWARD-WINNING ARCHITECTS

Architects of 14 steel-framed buildings chosen as winners in AISC's 1987 Architectural Awards of Excellence Competition will be honored at the Seventh Annual Awards Banquet on Sept. 30 at the Westin Hotel, Chicago.

The Architectural Awards, presented biennially since their inauguration in 1960, have become the most prestigious in the construction industry. They recognize outstanding steel-framed structures of all types, many now considered benchmarks to the state-of-the-art, and landmarks in their own locales.

At the black-tie event, each winning architect receives a plaque adapted from a single-edition bronze sculpture by artist Joe Kinkel. It symbolizes the significance of steel in all Architectural Awards of Excellence and Prize Bridge Awards given by AISC.

Tickets are \$95 per person; tables of eight \$700 and tables of ten \$850. For further information, call Lona Babbington, AISC headquarters, 312/670-5432.

## STILL TIME TO SIGN UP FOR STEEL BRIDGE SYMPOSIUM

There is still time to make last-minute phone reservations for the National Symposium on Steel Bridge Construction, to be held Sept. 14 & 15, 1987 at The Shoreham Hotel, Washington, D.C. For room availability and rates, call Jim Herman, assistant director of meetings and conferences, 312/670-5431. The registration fee is \$175.

The program opens with a panel discussion on "Quality Assurance/Quality Control," followed by "Use of Weathering Steel," "FHWA Region 3 Standardized Bridge Details," "NCHRP Steel Bridge Research," and "NSF Steel Bridge Research." After Monday evening's banquet, Robert E. Farris, deputy administrator of FHWA, will address attendees. "Autostress Application" will be covered on Tuesday, as well as "Bridge Fabrication—AASHTO/AWS Bridge Welding Code—Fracture Control Plans," "Material Considerations in Steel Bridge Construction," "Bridge and Structures Information Center,"

"Advantages of the AISC Certification Program," "Erection Considerations," "Construction of the Cable-stayed Mississippi River Bridge at Quincy, Illinois," and "How to Get the Project Built."

The symposium, co-sponsored by AISC, FHWA and AASHTO, will be beneficial to federal, state and municipal bridge, construction and materials engineers, bridge designers, consultants, fabricators, erectors, contractors, inspectors and educators. The symposium's theme is: "To create a dialogue between owners, designers and builders to enhance the economy, quality and reliability of steel bridges."

## NEW YORK CITY ADOPTS AISC'S LRFD SPECIFICATIONS

The New York City Board of Standards and Appeals adopted AISC's new *Load and Resistance Factor Design Specification for Structural Steel Buildings*, on July 8, 1987, following a public hearing. The proposed building code revision, known as Reference Standard RS 10-5B, was submitted to the board by Commissioner Charles M. Smith, Jr. of New York's Dept. of Buildings.

Appearing at the hearing were I. Polsky, executive engineer, Dept. of Buildings, New York, and Daniel M. McGee, regional director of construction codes and standards, AISI. McGee prepared the text of the Reference Standards discussed at the hearing.

The revisions to the New York City building code, effective July 8, 1987, can be obtained by purchasing the Board of Standards and Appeals' Bulletin, which contains the minutes of the July 8 meeting (case calendar no. 617-87-BCR). Contact Daniel M. McGee, regional director of construction codes and standards, American Iron and Steel Institute, P.O. Box 311, Matawan, N.J. 07747; 201/583-5700.

NEW LRFD/ASD

# Computer Data Base



## FOR STRUCTURAL SHAPES

In a continuing effort to provide steel design aids to structural engineers, the American Institute of Steel Construction has **improved** and **expanded** its Computer Data Base for properties and dimensions of structural steel shapes, corresponding to data published in Part 1 of the 1st Edition, *AISC LRFD Manual of Steel Construction*, as well as properties needed for Allowable Stress Design according to the 8th Edition, *AISC Manual of Steel Construction*.

### PROGRAM PACKAGE

1. Computer Data Base in binary format for the properties and dimensions of the following structural shapes:
  - a. W Shapes (**many new sections**)
  - b. S Shapes
  - c. M Shapes
  - d. HP Shapes
  - e. American Standard Channels (C)
  - f. Miscellaneous Channels (MC)
  - g. Structural Tees cut from W, M and S shapes (WT, MT, ST)
  - h. **Single & Double Angles**
  - i. **Structural Tubing**
2. Explanation of the variables specified in each of the data fields.
3. Listing of a BASIC read/write program and **sample search routine**.
4. **Utility program to convert data file to ASCII format for FORTRAN applications.**

### ORDER FORM

I enclose payment of \$ \_\_\_\_\_ for qty. of \_\_\_\_\_  
NEW LRFD/ASD COMPUTER DATA BASE-DIMENSIONS AND  
PROPERTIES OF STRUCTURAL SHAPES AT \$60 each.  
(Member price: \$45. Members & non-members with trade-in\*: \$35.)

**PERSONAL COMPUTER DISKETTE FOR:**

- IBM-PC (& Compatibles)       DEC Rainbow PC  
 HP-150       Wang PC

\*For discounted "trade-in" price, the original copy of the previous AISC shape data base must be returned with your remittance. Offer good on diskettes only.

Visa & MasterCard accepted

Card No. \_\_\_\_\_

Name \_\_\_\_\_ Title \_\_\_\_\_

Company \_\_\_\_\_

Address \_\_\_\_\_

City \_\_\_\_\_

State \_\_\_\_\_ Zip \_\_\_\_\_

**Please enclose remittance. No C.O.D. orders.** In New York, California and Illinois, add sales tax. Shipping charges prepaid in the U.S. On shipments outside the U.S., add 10% of total purchase for postage and handling. Visa and MasterCard accepted.

Signature \_\_\_\_\_

Exp. Date \_\_\_\_\_

MAIL TO: NEW LRFD/ASD COMPUTER DATA BASE  
AMERICAN INSTITUTE OF STEEL CONSTRUCTION, INC.  
P.O. Box 4588, Chicago, IL 60680-4588

# Innovative Engineering

## ORLANDO TERMINAL

### A Roof that "Floats"

by Donald L. Moe

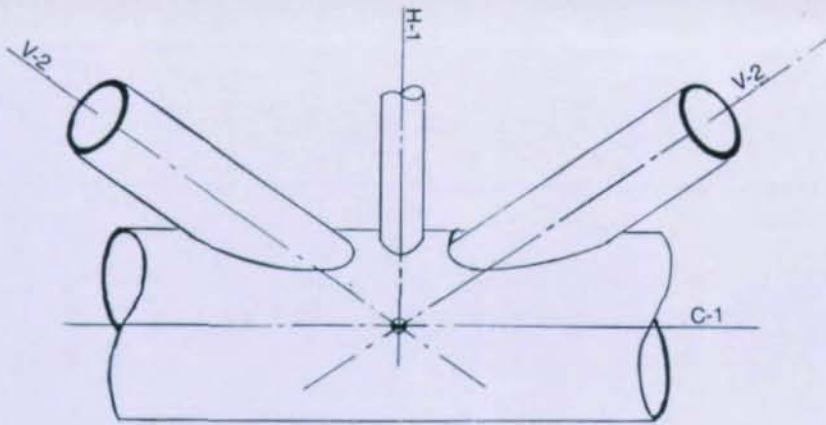


The new TriCounty Transit passenger terminal in Orlando, Fla. was designed to replace an aging terminal serving the Metro area. The site, in the center of downtown, was relatively small for a terminal that had to accommodate a peak capacity of 20 buses—as well as protect the public from sun and weather.

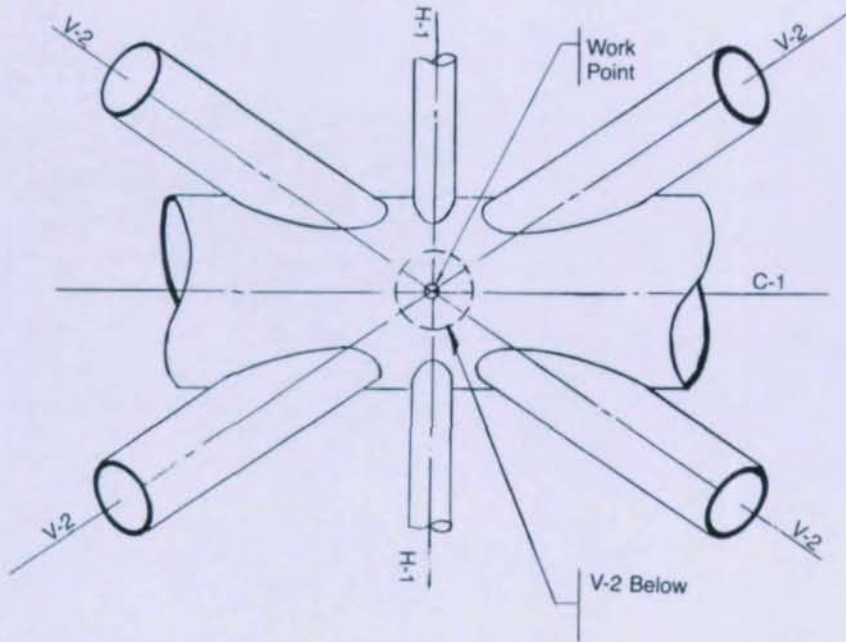
The solution proposed was a concept developed by Architects Design Group. Conceptually, the passenger terminal was to be protected by a large covered roof which, in essence, would be "column-free." The solution to this design criteria was a structural system above the roof area. It consists of two major steel pipe trusses spanning 208 ft and supported by columns at each end. Since the terminal is in the heart of downtown, the architect wanted to create both a functional project and a focal point for the city. The trusses align themselves parallel with one of the major interchanges through the city.

Four columns, 4 ft in dia., support the trusses. The columns frame to a 5-ft, deep-drilled caisson for foundation support. The caissons, 208 ft x 60 ft o.c., provide an open area for buses to navigate. And, they create a feeling of open space under the terminal building itself. Columns, clad in stainless steel, add to the feeling the roof is floating above the pavement.

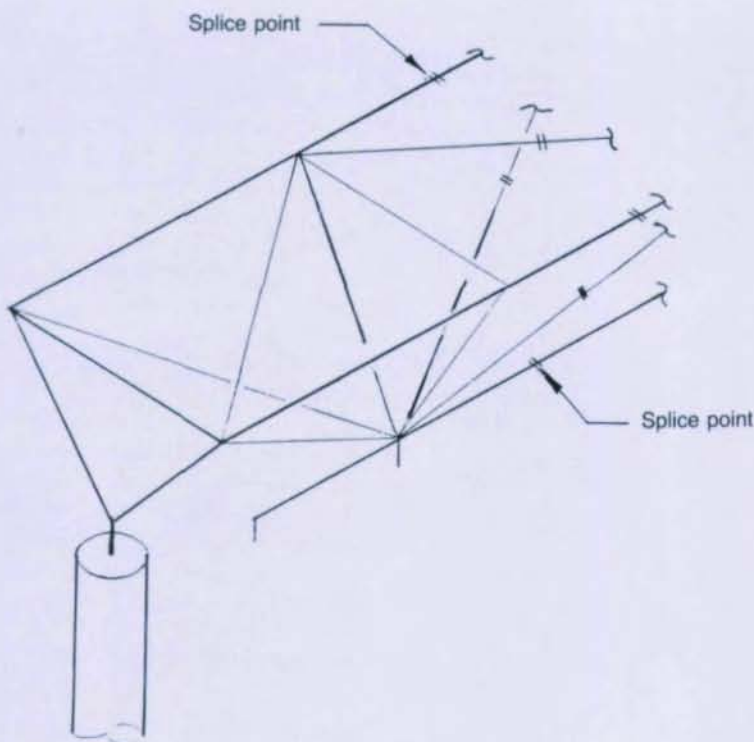
During the initial design, a standard pad foundation was selected for the columns. After completing initial truss runs and gathering data for foundation load, the pad size was fixed at about 20 ft x 30 ft. This individual pad had to be set at a depth 10 ft below



ELEVATION



PLAN



Typical bottom chord connection (I.).  
Isometric end section (below, I.)

finished grade to utilize dead weight of the soil and passive soil pressure to resist overturning forces. At this depth, the pad would be below the water table, resulting in dewatering and extensive excavation. At this point the footing considerations were re-evaluated and a drilled caisson pier selected, which resulted in considerable cost savings. Since the concrete column would spring from the top of the pier, no pile cap would be necessary. The pier foundation provided minimal settlement as well as minimal lateral displacements.

Because of the nature of tubular structures, several load combinations were considered. Extensive computer modeling was used during all phases of analysis and design. The expertise of the American Petroleum Institute (API), who compiled their years of dealing with offshore towers, was employed throughout the analysis design phase. Analysis of the bus terminal employed the PCSAP program. This Finite Element Code can easily model three dimensional truss or frame structures containing as many as 1,000 joints. Since the program runs on PC-based equipment, the design team could quickly examine alternate member geometry and/or configuration at economical cost. Program execution time was less than 20 minutes.



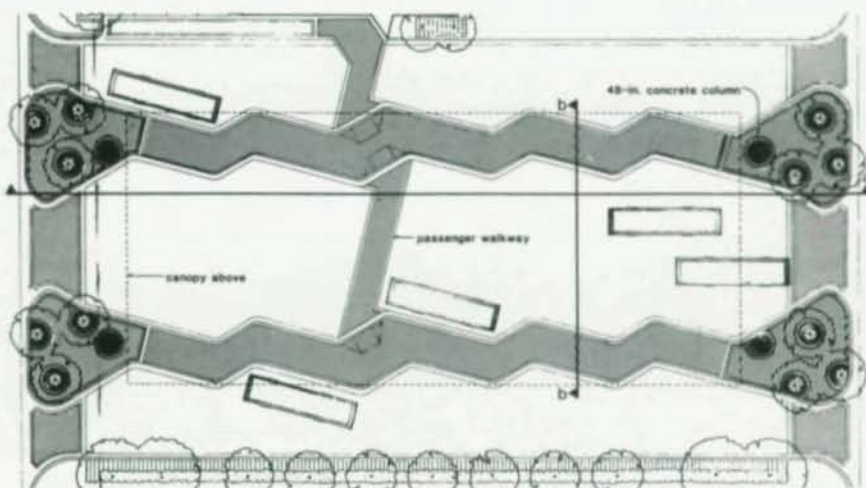
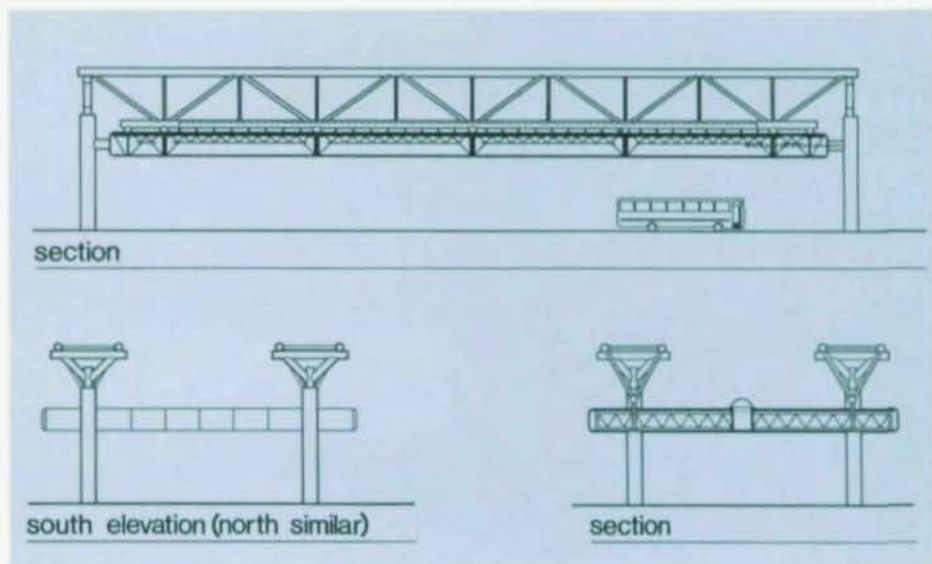
*Dramatic TriCounty Transit terminal (above). Details of unique roof framing (r.) shows sections; terminal floor plan (bott.).*

During the preliminary design phase, a simple, three-dimensional truss analysis was used to determine initial member cross section, investigate thermal stresses and investigate changes in geometry. Results of these analyses were used eventually to refine support framing conditions.

During the final design phase, a more refined three-dimensional truss/frame model was adapted. Moments, shears and axial forces resulting from this analysis phase were used to develop adequate connection details, as well as refine member sizes.

Once the initial truss configuration had been analyzed and refined and approved by the architect, individual member sizes and their associated connections were checked. Lateral buckling of the individual members and "punching" shear at the connections were of major concern. A quality control procedure was established with a testing lab to assure welding standards were met during fabrication and erection. All welded joints were checked closely for compliance with the latest American Welding Society guidelines. Finally, the completed design was again computer-modeled for overall integrity.

The end result is a three-dimensional "space-frame" truss spanning 208 ft, con-





*Spectacular space-frame roof trusses (l.) were shop-fabricated (c.) in sections and field-spliced. Tricky delivery problems were solved by making truss its own truck bed (bott.).*

sisting of 24-in. dia. top and bottom chords; 10-in. dia. and 5-in. dia. diagonals. One end of the truss is fixed, the other end bears on a Neoprene plate which simulates a roller type connection to relieve stresses related to temperature.

The roof structure is suspended at seven locations on the truss. The main support members for the lower roof consists of 4 ft-6 in. deep joist girders. These girders frame to a 10-in. dia. steel pipe, then cantilever approximately 12 ft past the support hanger. Joist girders were selected for economy, with the main roof structure constructed of 24-in. deep joists. Intermediate angle framing and light-gage framing supports the aluminum ceiling system for deadload and windload uplift. Roof dimensions are 85 ft x 195 ft.

Because of the size of the truss, 16-ft high x 16-ft wide and maximum span between splice points of 75 ft, trusses were delivered to the site in four sections, then spliced in the field. All welds were monitored and tested.

The task of delivering trusses to the site presented some tricky problems for the fabricator. The fabricator devised a trucking system which made the truss essentially its own truck bed. Connected to a truck cab, the trusses were literally driven to the project. □

**Architect**  
Architects Design Group

**Structural Engineer**  
Don Moe Engineering, Inc.  
Winter Park, Florida

**Owner**  
TriCounty Transit Corporation  
Orlando, Florida

Donald L. Moe, P.E., is the principal in the structural consulting firm of Don Moe Engineering, Inc., Winter Park, Florida.

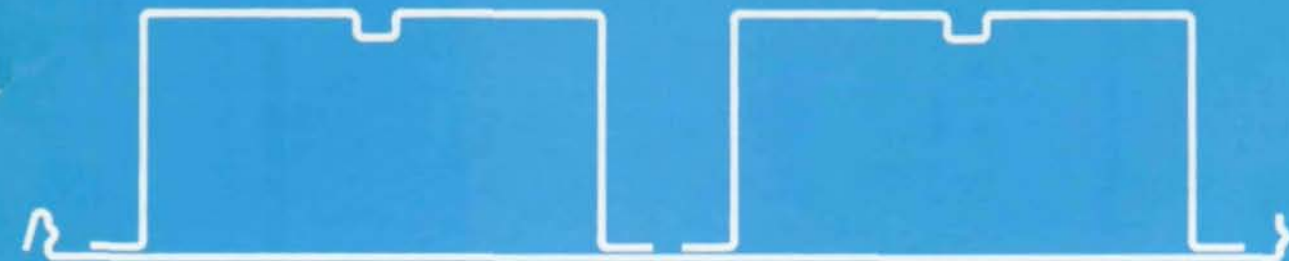


# EPIC LONG-SPAN DECKS

E750-SPANS TO 32 FT.  
E600-SPANS TO 26 FT.  
E450-SPANS TO 23 FT.  
E300-SPANS TO 15 FT.

**AVAILABLE FOR DELIVERY—NOW**

Galvanized G60-G90  
Lengths to 50 ft.



Plated Decks—Plain or perforated  
Most complete line of deck products  
in  $\frac{5}{8}$ " to  $7\frac{1}{2}$ " depths

## OUR SERVICE WILL SAVE YOU TIME & MONEY

Epic has these profiles available for shipment on an A.S.A.P. Basis!

Your order will be processed in One Week in most cases. Ask about our A.S.A.P. Service.

Call (412) 351-3913 today for price and delivery information and for product advice on all types of Form Decks, Composite Decks, Long-Span and Roof Decks.

### Manufacturing Plants:

- Pittsburgh, Pa.
- Chicago, Ill.
- Lakeland, Fla.

*Dealer Inquiries Invited*

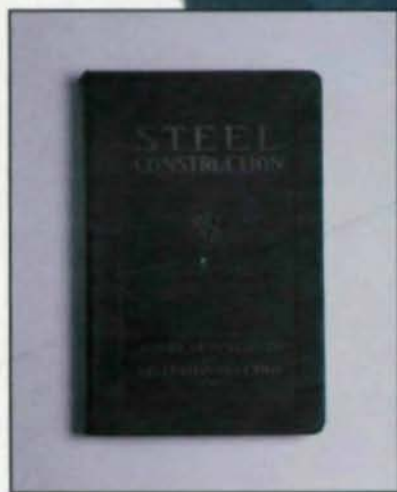
**EPIC**<sup>®</sup>  
METALS CORPORATION

Eleven Talbot Avenue, Rankin, PA 15104  
PHONE: 412/351-3913  
TWX: 710-664-4424  
EPICMETAL BRDK

# CONTINUING A TRADITION OF RELIABILITY

...Launching A New Era  
in Steel Design!

1ST  
EDITION



1927...

1986...

**It's Here! The Book We've  
All Been Waiting For...**

- based on the 1986 AISC "LRFD" Specification for Structural Steel Buildings.
- grounded in the tradition of the AISC "bible" —the *Manual of Steel Construction*, introduced in 1927 and now in its 8th Edition.
- meshing the familiar and accepted basics with the very latest approaches to steel design, derived from current research and technological advances.
- helping you design more reliable, more economical steel-framed buildings.

MANUAL OF STEEL CONSTRUCTION

LOAD &  
RESISTANCE  
FACTOR  
DESIGN

FIRST EDITION



**ORDER YOUR COPY NOW!**

AMERICAN INSTITUTE OF STEEL CONSTRUCTION-DEPT B  
P.O. BOX 4588, CHICAGO, IL 60680-4588

I enclose payment of \$ \_\_\_\_\_ for \_\_\_\_\_ copies of the First Edition Load and Resistance  
Factor Design Manual of Steel Construction at \$56.00 each.

Name & Title \_\_\_\_\_

Company \_\_\_\_\_

Address \_\_\_\_\_

City \_\_\_\_\_

State \_\_\_\_\_

Zip \_\_\_\_\_

Please enclose remittance. No C.O.D. orders. In New York, California and Illinois add  
sales tax. Shipping charges prepaid in the U.S. On shipments outside the U.S., add 10% of  
total purchase for postage and handling. Visa and MasterCard accepted.

Charge My Card No. \_\_\_\_\_

Exp. \_\_\_\_\_