

ERICAM INSTITUTE OF STEEL CONSTRUCTION  
Wrigley Building, 400 North Michigan Avenue  
Chicago, IL 60611

Address Correction Requested

A9.29-4

BULK RATE  
U.S. POSTAGE  
PAID  
Permit No. 120  
Brookfield, WI 53005

# MODERN STEEL CONSTRUCTION

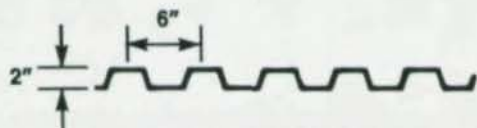
NUMBER 4 • 1989



## THIS ISSUE

Steel Provides a Missing Link  
Primer/Fireproofing Compatibility  
Commitment to Tomorrow  
A Jewel Crowns an Interstate  
New Skin with Welded Trusses

# No. 12 FORM DECKS



SECTION PROPERTIES

GAGE	METAL t	I	Sp	Sn
24	.0239	0.231	0.192	0.206
22	.0295	0.299	0.253	0.270
20	.0358	0.378	0.326	0.346
18	.0474	0.527	0.471	0.497

## 2" x 6" 30" COVER EXTRA HEAVY DUTY FORM

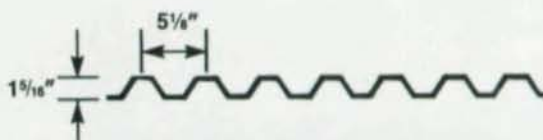
# UF2X

- Ribs can accept a 3/4" stud
- Available vented (UF2XV) for lightweight fill roofs

## 1 5/16" x 5 1/8" 36" COVER HEAVY DUTY FORM

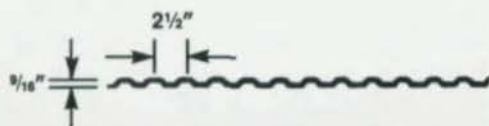
# UFX-36

- Ribs can accept a 3/4" stud
- Available vented (UFXV-36) for lightweight fill roofs



SECTION PROPERTIES

GAGE	METAL t	I	Sp	Sn
26	.0179	.071	.086	.096
24	.0239	.101	.125	.141
22	.0295	.130	.164	.183
20	.0358	.164	.212	.225



SECTION PROPERTIES

GAGE	METAL t	I	Sp	Sn
28	.0149	.012	.036	.039
26	.0179	.015	.046	.048
24	.0239	.022	.070	.070

## 9/16" x 2 1/2" 30" COVER STANDARD FORM

# UFS

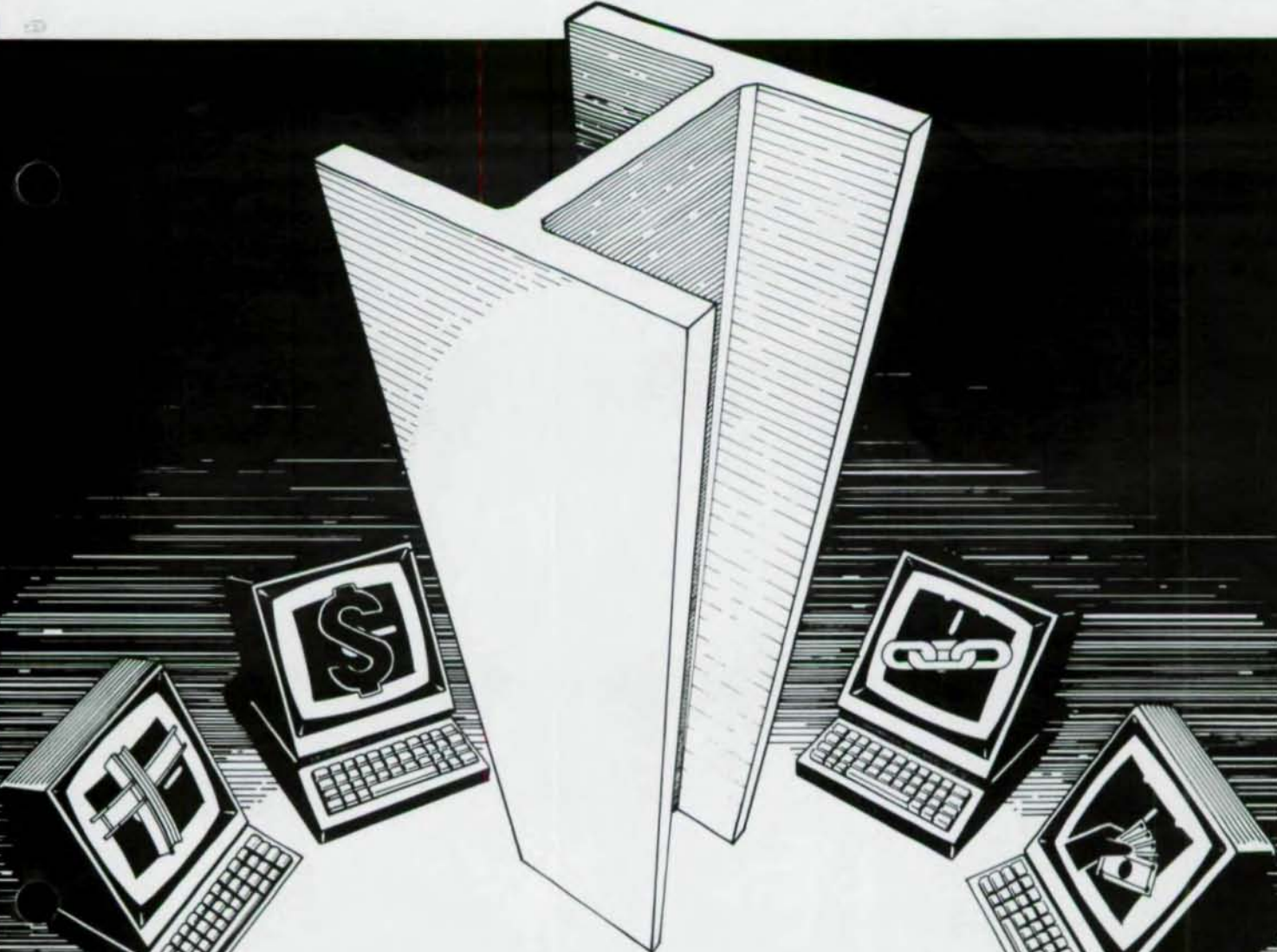
- Diaphragm values are available for all three form decks.
- Composite beam and girder tables are available for UF2X & UFX-36.
- A complete line of bridge form decking is also produced by USD.



NICHOLAS J. BOURAS, INC.  
P.O. BOX 662, 475 SPRINGFIELD AVE.  
SUMMIT, NEW JERSEY 07902-0662 (201) 277-1617



ASSOCIATE MEMBER



## Structural Software Company

### The steel man's computer store

Jim Bolling, President and CEO of the Structural Software Company, is a second-generation steel man. His fifteen years spent managing a 5,000 ton per year family fabricating shop gave him the insider's perspective.

This understanding of the steel man's needs has shaped every program the Structural Software Company markets.

Our programs speak the language of steel, instead of requiring you to become a programmer. And, they are designed to work with you, the way you work. To reduce the time and the costs between the bid and the invoice.

It's a tough business. You need programs that work hard, not those that make your work harder.

**F** **FabriCAD**, our computerized detailing program, is designed to cut through the steel man's stubbornest logjam -- the long waits on details and shop drawings. You can gain control over your schedule and budget, and smile at change orders.

**E** **Estimating** thinks the way you do, and takes into account everything that needs to happen. In an intensely competitive climate, Estimating lets you capitalize upon your shop's unique strengths to generate faster and more profitable quotes.

**M** **Material Allocation** lets you develop purchase orders by muling and combining your materials. Combine materials for mill or warehouse buying, and mult against

your inventory, to recycle drops and never run short. Create cutting lists that will let you mark each beam with the job numbers and piece marks of the pieces you will cut from it.

**P** **Point of Sale** will let you offer quotes over the phone, based upon material, tax, and labor costs, as well as the client's credit standing.

All of these programs run on IBM-AT compatible microcomputers.

Call today, and talk to some people who can speak your language.

**Structural Software Company**  
PO Box 19220  
Roanoke, VA 24019  
(703) 362-9118

# MODERN STEEL CONSTRUCTION

VOLUME XXIX • NUMBER 4 1989  
JULY-AUGUST 1989

## American Institute of Steel Construction, Inc.

The Wrigley Building  
400 North Michigan Avenue  
Chicago, Illinois 60611-4185  
Phone: 312 / 670-2400

### OFFICERS

Samuel Y. Golding  
Chairman  
Ralph H. Clarbour  
First Vice Chairman  
Stephen E. Egger  
Second Vice Chairman  
Oscar W. Stewart, Jr.  
Treasurer  
Neil W. Zundel  
President  
David Ratterman  
Secretary & General Counsel  
Lewis Brunner  
Vice President, Membership Services  
Geerhard Haaijer  
Vice President, Technology & Research  
Morris Caminer  
Vice President, Finance/Administration

### EDITORIAL STAFF

George E. Harper  
Editor  
Lona Babbington  
Business

### ADVERTISING REPRESENTATIVE

Pattis-3M  
Eric K. Nieman  
4761 West Touhy Avenue  
Lincolnwood, Ill. 60646  
312/679-1100  
FAX 312/679-5926

### On our cover

Washington State Convention and Trade  
Center, Seattle, Story on p. 28.

---

## 8 Steel Notes

---

## 9 Glade Creek Bridge Steel Provides a Missing Link



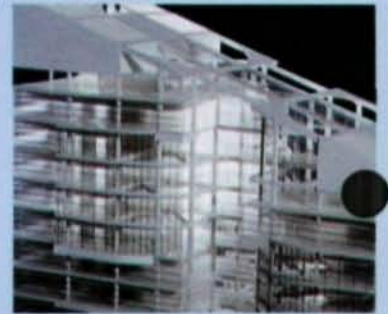
---

## 18 Primer/Fireproofing Compatibility



---

## 23 Polymer Science Building Commitment to Tomorrow



---

## 28 Washington State Convention and Trade Center A Jewel Crowns an Interstate



---

## 34 New Skin Profile Possible with Welded Trusses



# NONLINEAR FEA ANALYSIS PLUS DESIGN ON YOUR PC. \$4,990

## SCADA/PC-S1: \$2,800

This general purpose program has everything most structural engineers need. Features such as:  2D and 3D linear analysis with P- $\Delta$  effects.  Out-of-core routine for virtually unlimited-size structures.  Steel and concrete design.  Interactive graphics with stress contours.  Macro-programmable query language.  Mesh generation.

## SCADA/PC-S2: \$3,800

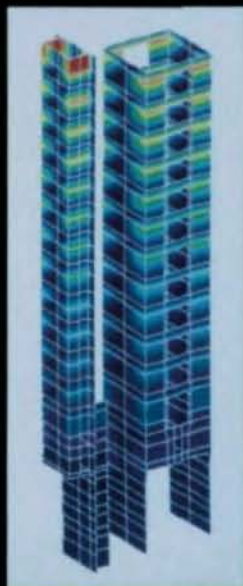
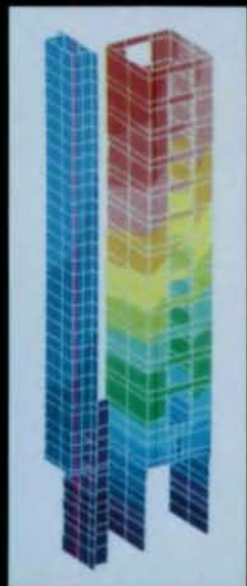
All the features of SCADA/PC-S1 plus time history, response spectrum, and buckling.

## SCADA/PC-S3: \$4,990

All the features of SCADA/PC-S2 plus material and geometric nonlinearities.

All three SCADA packages include the following elements: 3D truss, 2D and 3D beam, 3 & 4-node thin plate/shell, 3 to 9-node thick plate/shell, plane/axisymmetric, and 4 to 27-node solid.

Other SCADA modules include nonlinear heat transfer and fluid flow. Prices shown are for PC-version only. SCADA versions for SUN, VAX, and APOLLO are also available.

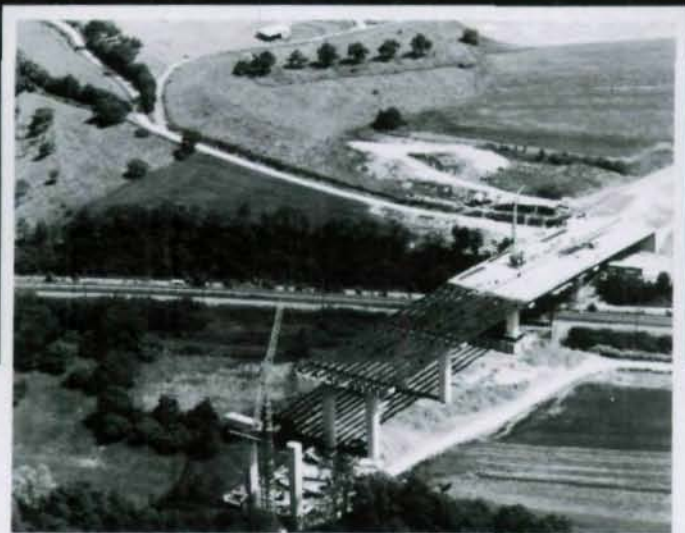


*Scada*



AMERICAN COMPUTERS & ENGINEERS  
11726 San Vicente Blvd., Suite 212  
Los Angeles, CA 90049, USA  
Tel: (213) 820-8998 Fax: (213) 826-1964  
Telex: 493-0363 ACE U1

# ARBED-ROLLED WIDE FLANGE BEAMS: BRIDGING THE GAP BETWEEN PERFORMANCE AND ECONOMY.



Now economy meets performance to solve all your shortspan bridge problems. The project shown here is using Arbed-rolled 40" sections, 130.7 feet in length, 328 lbs. per foot.

With Arbed's extensive custom rolling capabilities even the most difficult construction requirements can be met.

**ARBED-ROLLED 40" & 44" BEAMS.** Arbed's rolled 40" beams, available in 16 sections from 149 to 328 lbs., has now been expanded to include our new rolled 44" beams, available in 4 sections from 198 to 245 lbs. They all

offer the same benefits we're famous for: high section moduli, great lateral buckling resistance, and the ability to compete economically with both fabricated sections, as well as reinforced precast and prestressed concrete.

#### ARBED-ROLLED "TAILOR-MADE" BEAMS.

This is the series (up to 42.45" X 18.13" X 848 lbs./Ft.) that lets you specify the beam according to the section properties you need, other than what is normally available. For example, our 40" and 36" TAILOR-MADE

series allows you to raise the moment of inertia to 67,400 in<sup>4</sup> and the section modulus to 3,170 in<sup>3</sup>. This eliminates the need to add plates to standard WF beams. Result? Big savings: In fabrication cost and weight.

#### GET ALL THE FACTS.

Send now for complete information including specifications: TradeARBED Inc. 825 Third Avenue, 24th floor, New York, NY 10022. (212) 486-9890. Domestic telex: (W.U.) 12-6159, Int'l telex: (ITT) 421180. OMNIFAX (G-3): 212 355 2159/2421.

**A TRADE ARBED** Inc.

**INNOVATORS OF STEEL CONSTRUCTION PRODUCTS.**

# OUR WELDING PRODUCTS ARE UNSEEN IN ALL THE RIGHT PLACES.

BP America's corporate headquarters in Cleveland, Ohio leaves a lasting impression on everyone who sees it.

What they don't see is the contribution of Lincoln Electric.

Using Lincoln Innershield® self-shielded FCAW welding electrode, Lincoln lightweight air-cooled guns, and Lincoln power sources, operators were tested and qualified with minimal training.

Unlike conventional gas-shielded processes, with Innershield, operators could work in tight situations, free from cumbersome gas cylinders, hoses, and restrictive shielding curtains.

Portable Lincoln wire feeders simplified continuous welding on long joints and virtually eliminated stops and starts. Easily adjusted for voltage and wire-feed speed, they provided full welding flexibility.

What's more, Lincoln provided expert technical assistance to keep each welding application running smoothly.

If you're working on the kind of project that people are going to notice, specify Lincoln Electric.

The results will be as enduring as they are endearing.

**LINCOLN**  
**ELECTRIC**

Where productivity isn't a foreign idea.

For more information about Lincoln welding products, contact your Lincoln distributor or The Lincoln Electric Company, 22801 St. Clair Ave., Cleveland, Ohio 44117-1199.

# Steel Notes

## NEW LECTURE SERIES: ALLOWABLE STRESS DESIGN IN STEEL

Commencing in September 1989, and continuing through early 1990, AISC is featuring a six-lecture program that reviews the Allowable Stress Design method. Over 60 cities will be covered by this seminar which will particularly emphasize the new Ninth Edition *Manual of Steel Construction* as well as the newly adopted 1989 Specification for structural steel. For more information contact AISC 312/670-5422.

## T. R. HIGGINS LECTURESHIPS

The 1990 T. R. Higgins Lectureship Award competition deadline is November 10, 1989. This program, in its 19th year, recognizes lecturers and authors whose published technical papers are considered an outstanding contribution to structural steel literature.

The competition prize is a \$5,000 cash award and a framed certificate. For more information contact AISC at 312/670-5406.

## WINNERS OF 1989 SCHOLARSHIPS

Five scholarship winners were announced by AISC's Committee on Education. They are:

## Stupp Bros. Bridge & Iron Scholarship—

Robert W. Miller  
Ohio Northern University

## AISC/USS Scholarships—

Alan Price  
CCNY

## AISC/Carolina Steel Scholarship—

Kevin L. Burton  
The Citadel

## AISC/Fred R. Havens Scholarship—

Teresa Pfortmiller  
Univ. of Kansas

All recipients receive a cash award to support their educational costs for their senior year of undergraduate work.

## JOBBER II

### FEET-INCH-SIXTEENTHS ENGINEERING CALCULATOR WITH DECIMAL & METRIC

"The calculator that does it all"

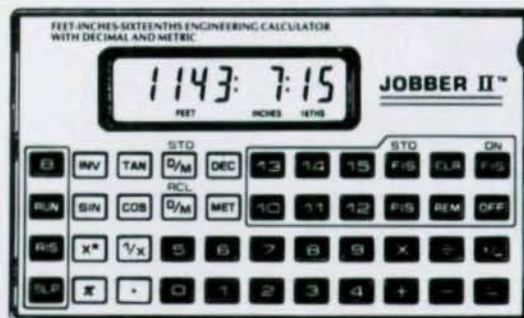
It will save you time, money & costly mistakes.

*If You Work With Dimensions—You Need Jobber II.*

- It is the Best and Simplest to Use of All Feet-Inch-Sixteenths Calculators.
- With Jobber II you can quickly and easily add, subtract, multiply, and divide feet, inches, and sixteenths.
- It has built in trig functions which permit easy solutions to right or oblique triangles and circles without use of charts or tables
- It is programmed to solve right triangles giving you the Bevel-Slope-Rise-Run at just the touch of a button. That means you can solve diagonals, stringer, rafter calculations, and the like instantly.

### Why It Is The Best And Simplest To Use . . .

- Jobber II has the only patented 0-15 keyboard in the industry.
- This means that dimension entry is simplified to a minimum number of keystrokes. For example, only 3 keystrokes are required to enter a dimension like 5' 10<sup>15</sup>/<sub>16</sub>" compared to as many as 9 keystrokes on other dimension calculators.



ACTUAL SIZE: 3 1/4" x 5 1/2" x 3/8"

\$89.95 Plus \$3.00 Postage & Handling  
MONEY BACK GAURANTEE

For more information or to order, call toll free 1-800-635-1339.

In Tennessee, call (615) 428-6517. Call collect.



# GLADE CREEK BRIDGE

## Steel Fills a "Missing Link"

by Thomas D. Jenkins

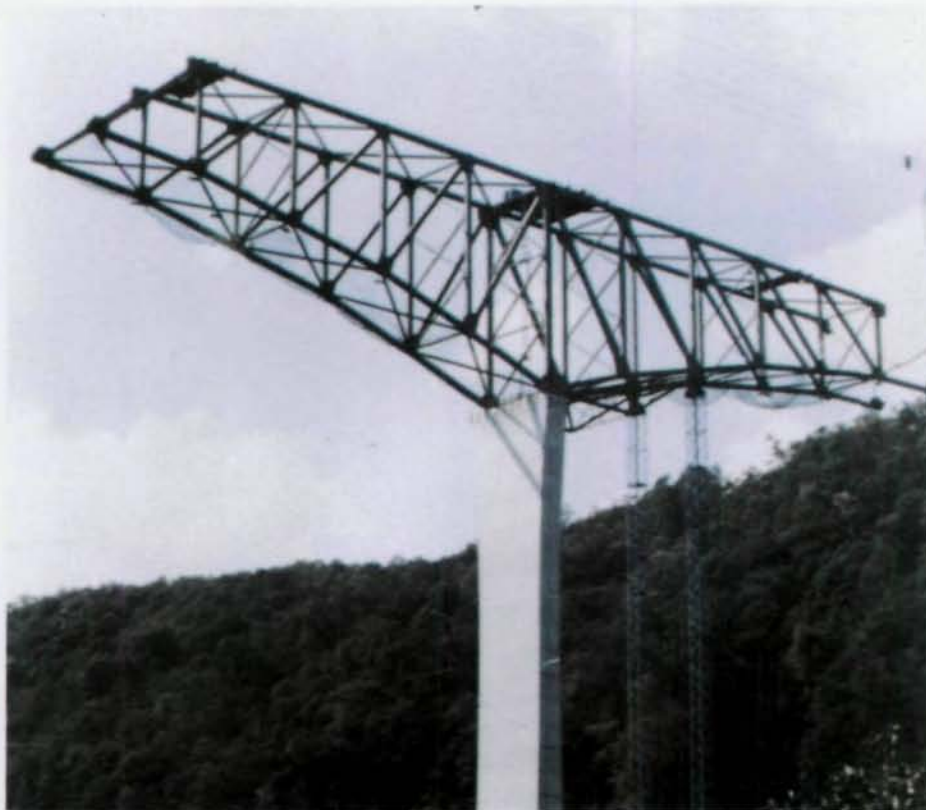


The Glade Creek Bridge, east of Beckley, W. Va., opened in July '88 following a two and one-half year construction program. This bridge provides motorists traveling I-64 with a majestic view of a scenic, 700-ft deep gorge cut by a tributary of the New River. The graceful lines of the bridge's arched trusses and monumental piers make the structure a notable landmark.

The bridge structural system is the product of the latest refinements in the design process for a form of steel truss. Engineers with the Baltimore-area office of **W. J. Baker, Inc.**, relied heavily on advanced computer analyses throughout the design process which employed new load factor specifications.

A field of nine general contractors quoted only on the steel design, which was bid competitively against a concrete segmental alternative. The West Virginia Department of Highways awarded the contract for construction of the bridge and its approaches to Westbrook Construction of Denver, Colo. The contractor tendered a bid of \$29 million in late 1985. The bridge part of the total project was \$25.5 million.

The bridge is a three-span, continuous-steel deck truss supporting two 36-ft roadways. The center span is 784 ft long flanked by 560-ft side spans. The superstructure extends beyond the ends of the main truss to stub abutments with steel multi-girder simple spans. Total length is 2,179 ft between abutment bearings.



Bridge erected in cantilever off its piers

The bridge features two reinforced concrete main piers which support the interior truss bearings. The main pier on the west slope is 351 ft high, with a 303-ft tall counterpart at the east slope. These piers are cast-in-place, two-cell box shafts whose form suggests an hour-glass shape when viewed from an oblique angle.

The truss ends are supported on 20-ft steel rocker bents carried on reinforced concrete pedestals. The entire bridge is founded on 3-ft dia. reinforced-concrete caissons drilled into rock.

#### Preliminary Studies

Greiner was selected to design the steel alternate for the crossing, with Sheladia Associates, Inc., of Riverdale, Md., as a minority subconsultant. Preliminary investigations established the layout of the truss and substructure. The principal concern was to achieve the most economical form for the truss and its substructure. A decision to avoid using steel with a specified yield strength greater than 50,000 psi was an important factor in economic comparison between a parallel chord arrangement and a more traditional haunched form.

**FOR  
ALL  
YOUR  
STRUCTURAL  
FASTENER  
NEEDS  
SPECIFY  
ST. LOUIS!**



## ST. LOUIS SCREW & BOLT COMPANY

St. Louis Screw & Bolt makes a FULL range of structural fasteners. We produce Types I & III A-325 bolts, ASTM A-307 bolts, and have the capability to manufacture fasteners to YOUR specifications. At St. Louis Screw & Bolt, we practice accepted quality control methods to insure that you receive the best products available. ALL materials we use are traceable to steel melted and manufactured in the USA. And each production run, traceable to a heat lot of steel, is certified to meet ASTM specifications.

**FOR THE QUALITY SOLUTION  
TO ALL YOUR STRUCTURAL  
FASTENER NEEDS, SPECIFY  
ST. LOUIS!**

**ST. LOUIS SCREW & BOLT COMPANY**  
6900 N. Broadway • St. Louis, MO 63147 • 314/389-7500



Since 1887



FAX: (314) 389-7510  
1-800-237-7059



ASSOCIATE MEMBER

# FastFrame™

An essential tool for every design office

Integrated Editing, Analysis, Graphics, AISC Design, and AISC Verification of 2D Structural Frames

At Last ..... a revolutionary application using everyone's favorite software...Lotus 123®. Now you can completely analyze and design 2D frames, trusses, bracing, and beams with lightning speed and superb graphics within 123. **FastFrame** also gives you on-line help, mouse support, true spreadsheet entry, single keypress control, and **exceptional speed** in a very refined package.

## AISC & USER DEFINED DATABASES

- View a "Pop-up" window to scroll through and select the section you need.
- Over 2,700 sections from the 6th, 7th and 8th edition AISC handbooks, including L, LL Jr., Tees, and others.
- Build your own additional database of frequently used sections for use on all future jobs.
- Numerical accuracy maintained with all AISC values.

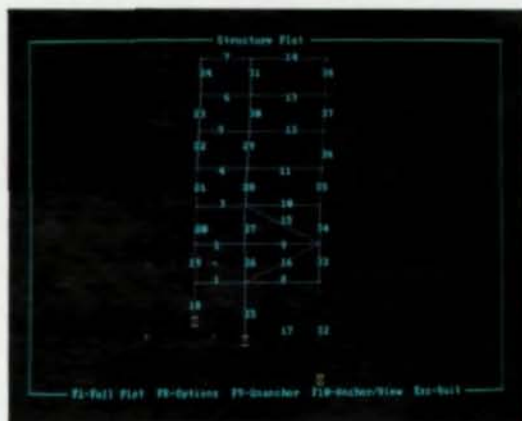
Section Label	Area	Depth	Width	T	Tc	Ix	Iy	Wpl
W14x62	18.28	23.74	8.998	0.506	4.308	552.88	24.588	1.71
W14x54	16.78	23.52	8.758	0.488	4.148	518.88	22.588	1.71
W14x48	15.28	23.18	8.518	0.470	3.988	484.88	20.588	1.71
W14x42	13.78	22.84	8.278	0.452	3.828	450.88	18.588	1.71
W14x36	12.28	22.50	8.038	0.434	3.668	416.88	16.588	1.71
W14x30	10.78	22.16	7.798	0.416	3.508	382.88	14.588	1.71
W14x24	9.28	21.82	7.558	0.398	3.348	348.88	12.588	1.71
W14x18	7.78	21.48	7.318	0.380	3.188	314.88	10.588	1.71
W14x12	6.28	21.14	7.078	0.362	3.028	280.88	8.588	1.71
W14x6	4.78	20.80	6.838	0.344	2.868	246.88	6.588	1.71

Pier under construction

The studies showed the parallel chord truss would have required about 6% more steel and considerably larger compression chord members over the main piers with the material strength restriction. While the parallel chord layout offers repetition of detail and eliminates plane changes in the bottom lateral bracing, the curved lower chord for the haunched truss deepens the structure where the bending moments are largest and reduces the shear that must be carried by the web members. Furthermore, a haunched truss reduces the height of the main piers and lowers their bending moments from longitudinal forces. These factors collectively saved about \$800,000 in estimated construction costs for the adopted design.

## Structural System Details

The bridge deck for the eastbound and westbound roadways is an 8-in. thick, 77 ft-6 in. wide reinforced concrete slab. This slab is supported by nine lines of W30x99 rolled beam stringers. These stringers are composite with the slab and span the 56-ft truss panel spacing. The stringers are framed into transverse floor beams, with continuity provided by high-strength, bolted-flange splices. The top flange splice passes over the top of the floor beam while the lower flange is spliced using tees bolted through the floorbeam web.

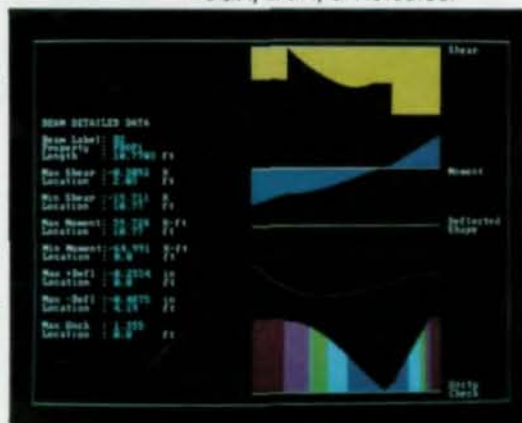


## BEAM ANALYSIS & AISC VERIFICATION

- Analyze any beam by pointing to it with the cursor and pressing [F-10].
- Shear, moment, deflection, and AISC code checks @ 250 points across span. AISC check includes all sections and all appendices.
- Full color graphical plots of results.
- Allowable/actual stresses, inflection points, & more!

## STRUCTURE PLOTTING

- Press [F6] to plot the entire frame at any time. Quickly verify your frame, loads, & boundary conditions.
- Displays static & deformed shapes.
- Members are color coded per their AISC combined stress values.
- Zoom in on any portion of the frame by "drawing a box"....just like CAD systems.
- CGA, EGA, & Hercules.



ENERCALC Engineering Software

Only \$650! Call Today  
(800) 424-2252 / (714) 723-0295

3070 Bristol Street Costa Mesa, CA 92626



Dramatic steel span over deep gorge near Beckley, W. Va.

## 41% DISCOUNT SALE!! STRUCTURAL ANALYSIS SOFTWARE

FOR IBM PC, XT, AT, etc. OR COMPATIBLE

# STEELPAK

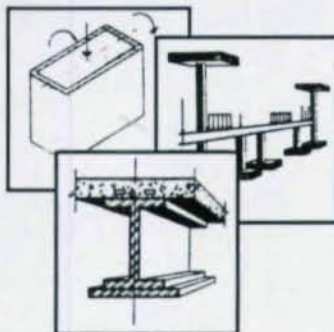
For the first time ever the famous STEELPAK is offered at a huge savings from the individual program prices. Not only is STEELPAK the most powerful software package for analyzing and designing steel structures, but now it is also the most economical. Regular prices of STEELPAK programs are as follows :

TUBECOL (steel tube column analysis and design)	\$120
P-DELTA (steel frame-shearwall interaction analysis)	240
PLANESTL (complex steel frame analysis & design)	360
STEEL (continuous steel beam analysis & design)	360
BEAM (steel beam analysis & design)	180
COMBEM (composite beam analysis & design)	360
STLCLX (steel column analysis & design)	300
PIPECOL (steel pipe column analysis & design)	120

TOTAL \$2040

Through AUGUST 31, 1989,  
STEELPAK is available for only \$1195

Complete steel design, per the AISC code, 8th edition. Analyzes and designs simple and continuous beams (20 spans), composite beams and column stacks (unlimited # of floors), as well as frames and trusses (400 joints, 600 members). ASC W, S, M, tube and pipe shapes are all stored on disk files to facilitate final shape selections. Beam and column programs are integrated to store and recall beam reactions, and allow multiple member designs in a single run, to provide the design of entire framing systems in the fewest possible number of runs.



The floorbeams are welded plate girders with a 5-ft web depth. The web geometry parallels the cross-slope of the roadway which peaks at the bridge centerline. To simplify fabrication, stringer connections and intermediate stiffeners were framed normal to the floorbeam flanges and the floorbeam web depth was kept constant. A form web depth is advantageous because it permits simultaneous parallel cutting of the web's upper and lower edges and keeps all stiffeners the same length.

The floorbeams span 45 ft between truss centers and are supported on steel-reinforced, neoprene bearings placed on the upper truss chords. These bearings permit rotation in all directions and longitudinal movement of the floor system above the main trusses. Transverse floorbreaks divide the floor into seven units, typically five panels in length. Shelf-type, hinged joints near a floor beam provide for expansion of the stringers at these floorbreaks.

The main span continuous truss has a parabolic curve in the lower chord and Pratt-type framing for the web members. At 56-ft increments, the truss panels are relatively long. This panel length minimized the number of members and connections while keeping the member size at reasonable dimensions for fabrication, shipping and erection.

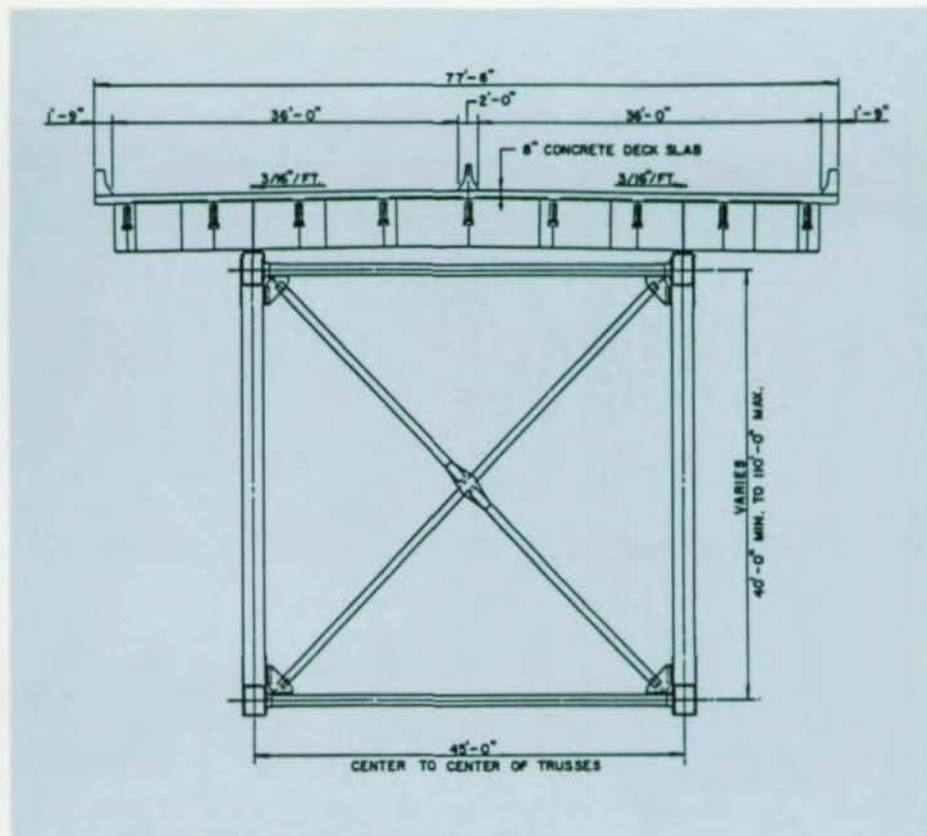
The upper and lower chords of trusses

MODERN STEEL CONSTRUCTION

**SAI**  
STRUCTURAL  
ANALYSIS, INC.  
429 Fifth Avenue  
Indianapolis, Fla 32903  
(407) 727-1562 or  
(407) 640-6047  
FAX (407) 728-1064

YES, Please send me STEELPAK @ \$1195.+ 2% Shipping & Handling  
(Florida residents add 6% sales tax)( expires AUGUST 31, 1989)  
 Please send me the free STEELPAK DEMO

NAME \_\_\_\_\_ COMPANY \_\_\_\_\_  
STREET ADDRESS \_\_\_\_\_  
CITY/STATE/ZIP \_\_\_\_\_  
PHONE ( ) \_\_\_\_\_ COMPUTER \_\_\_\_\_  MASTERCARD  VISA  
ACCT. NO. \_\_\_\_\_ EXP. DATE \_\_\_\_\_  CHECK ENCLOSED  
SIGNATURE \_\_\_\_\_ DATE \_\_\_\_\_



Cross section of Glade Creek Bridge

are box-shaped members with two 37-in. main vertical plates varying in thickness from a minimum of  $\frac{7}{8}$  in. near a contraflexure point to 4 in. in the lower chord at the interior reactions. The main plates are continuously connected to top and bottom cover plates with fillet welds. The diagonals and taller vertical members are also box-shaped, with depths ranging from 22 to 44 in. The shorter verticals are H-shaped members with two main plates fillet-welded to a single web plate. All members widths are 28 in., the standard selected as the inside dimension between gussets at connections. The box-shaped members are closed by seal plates just inside the end connections. Initial and maintenance painting of the inside surfaces was thereby eliminated.

Members are connected at the truss joints through gusset plates using  $1\frac{1}{8}$ -in. dia. A325 high-strength bolts. Chord splices include inside splice plates, as well as top and bottom cover plate splices. The cover plate splices use smaller,  $\frac{7}{8}$ -in. dia. bolts.

The upper and lower main-truss chords each have lateral bracing systems. Sway frames are provided between the vertical members at each support, adjacent to each support, and at alternate panels elsewhere. All bracing members are 14-in. wide-flange shapes in a Warren configuration. Bracing connection sizes were mini-

mized by arranging convergence of the diagonal working lines on the face of the main truss rather than the chord center. While this positioning gives some minor out-of-plane bending to the main members, it virtually eliminates local plate bending from introduction of the bracing forces into the member, avoids extra internal stiffening and loads the connection angles with the truss faces primarily in shear.

The bridge required 7,000 tons of structural steel. The truss was designed with ASTM A572, Gr. 50, for virtually all main and bracing members and connections. Approximately 10% of the structural steel is ASTM A36. Field connections are made entirely with high-strength bolts. Contact surfaces of all bolted connections were shop-coated with inorganic zinc-rich paint to maximize slip resistance and minimize the number of bolts used.

#### Pier Designs

Steel rocker bents on concrete pedestals were selected to support the truss ends. These 20-ft links can accommodate the longitudinal movements of the truss with simple details and permitted convenient installation after closing adjustments completed the trusses.

Each 4,400-ton interior truss reaction is carried through a 20-in. dia., high-strength forged-steel pin to a base weldment mounted on the caps of the two main

piers. The trusses are fixed to the tops of these two concrete main piers.

The outside shape of these two-cell shaft piers varies from top to bottom; however, the variation was arranged such that only one principal dimension would change within any lift during construction. This constraint was placed on the pier shape since it simplified the problem of form advancement and alignment. The constructibility of the design was confirmed when the 28 lifts for the 330-ft box section of the taller pier were all placed within ten weeks.

The upper 100 ft of the pier has a transverse parabolic flair arranged on four 25-ft chords. The 58 ft-2 in.  $\times$  15-ft pier top reduces to 44 ft  $\times$  15 ft through this region. The next 25-ft segment has constant outside dimensions, yet the inside transverse measurement continues to reduce, thereby giving a thickness transition to the sidewalls. Below the top 125 ft, all transverse dimensions were held and the longitudinal dimensions varied on a parabolic flair for four 24-ft chords. The inclinations of the walls was then maintained for the remainder of the pier height. The taller Pier No. 2 has five more 24-ft chords, flaring to a base dimension of 44 ft. Pier No. 3 is 48 ft shorter, with a base dimension of 44 ft  $\times$  26 ft.

The perimeter and internal web walls are 16 in. thick throughout the upper por-



truss reactions into the pier walls. Special design investigations of the pier tops were made to assure adequate reinforcement for splitting forces. These analyses resulted in substantial transverse reinforcement for the cap itself and increased horizontal reinforcement in the walls for 6 ft below the cap.

The analysis of forces normal to the pier walls originating from their plane changes identified a need for additional horizontal reinforcement in bands centered on these kinks.

The specifications called for all pier concrete above the footings to have a 5,000-psi compressive strength vs. 3,000 psi specified for the footings. The footings for both main piers are 10 ft thick and each is founded on 38 3-ft dia. caissons drilled into rock and filled with 5,000-psi reinforced concrete.

tions of the shafts. The sidewalls increase to 21 in. in the lower pier. The internal web wall provides an efficient method of stiffening the long transverse walls when compared with increasing their thickness and using a single-cell arrangement.

The shaft walls are conventionally reinforced with heavier vertical reinforcing required in the shorter pier because its

greater stiffness attracts more longitudinal force. The reinforcement is concentrated toward the outside corners to maximize the usefulness of the steel under the skew angle lateral loadings that controlled the pier design.

The shaft cap is solid below the truss bearing for a 7 ft-6 in. depth. This section is rather heavily reinforced to distribute the

### Structural Design Analysis

The truss superstructure was designed in conformance with AASHTO's recently adopted *Guide Specifications for Strength Design of Truss Bridges*. The design was facilitated by using a truss analysis computer program developed by Greiner. The program performs a complete dead- and

**SPEED. ACCURACY.  
FLEXIBILITY.**

**SDS/2 makes the connection—  
automatically.**

This connection designed and detailed automatically utilizing SDS/2

When it comes to making the connection between speed, accuracy and flexibility, SDS/2 from Design Data stands alone.

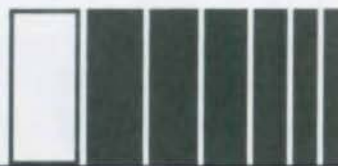
Automatically, Design Data's connection design/detailing system—SDS/2—integrates the recognized speed and accuracy of a computer, with all the flexibility you may have thought only possible with manual detailing.

To find out how SDS/2 can meet your specific shop needs, make the connection with Design Data today—800-443-0782. Be sure to ask for a detail sample with full connection design documentation.

"Software For The Professional"

800-443-0782

**DESIGN  
DATA**





*Steel design on gigantic bridge was selected in competition with a concrete alternative.*

live-load analysis and combines these data with user-supplied information on member loadings under wind, temperature, traction, etc. Group loads are then assembled and factored and the adequacy of each member evaluated in accordance with AASHTO specifications. The program also checks each member to estimate its critical wind speed for vortex-induced oscillations. Additional computer runs were made to identify all fracture-critical tension members.

The analysis for the substructure was based on a three-dimensional model of the whole bridge as a frame. An in-house, modified version of STRESS generally was used and supplemented for dynamic analysis with STRUDL software from McDonnell Douglas.

For the three-dimensional model, the truss was represented as a spine of nodal points with connecting members whose stiffness was selected so that the actual stiffness of the assemblage of members between two truss panels would be simulated closely. The piers were also idealized spine-type members. This model was subjected to all static loadings relevant to the design of the piers. From these results, the loading cases governing the design

were identified. The reduction of pier stiffness expected under these loadings, as a result of concrete cracking, was then determined. The stiffness of the pier spines was reduced accordingly and a second-order analysis performed under the most severe loading cases. This analysis showed the primary bending moments would be increased up to 10% because of the structure deflections. Consequently, all pier section, first-order design moments were increased by this amount.

Evaluation of the resistance capacity of the pier shaft at various elevations and with various reinforcement layouts was facilitated by another computer program developed by Greiner. This program performs an analysis of any shape reinforced concrete section by either ultimate strength or working stress methods.

The modified STRESS program was also used to perform a multimode spectral analysis of the bridge under an earthquake design loading of 0.1 g. This analysis relied on structure mode shapes and frequencies determined using STRUDL. The height of the main piers gives the structure long period fundamental modes which prevent the generation of large earthquake loads. The structure design

was not governed by earthquake loadings. However, adequate accommodation of earthquake displacements was a factor in the selection of rocker bents for the truss end reactions and in the design of the bridge seats and deck joints at the abutments.

#### **Closing the Final Gap in I-64**

The bridge filled the last remaining gap along I-64. Westbrook began construction early in 1986 by building a network of access roads to the base of the piers, which included construction of a short, steel beam bridge across Glade Creek. All excavated material had to be hauled out of the gorge which is partly in an environmentally sensitive state park.

Drilling for the foundation caissons started after completing the excavations and sealing the upper rock layers by grouting. Once the 38 caissons were placed for the main pier, the 10-ft thick footings could be built to complete the foundations.

The two-cell shafts were built in 12-ft and 12 ft-6 in. lifts using jumping formwork. Twenty-four lifts were required for Pier No. 3, the first one constructed. Twenty-eight lifts were necessary for Pier No. 2.

The materials for the piers were hauled in to the base of the shafts and then hoisted to the required height using an internal, self-climbing tower crane temporarily erected within one of the cells. The walls of the cell supporting the crane had to be strengthened with additional bands of transverse reinforcement to support the horizontal loads imposed where the crane's tower was wedged in.

The caps were constructed on stay-in-place metal formwork carried on steel beams spanning the 12 ft-4 in. spacing between the transverse walls. The heavily reinforced 7 ft-6 in. caps were placed in two lifts.

Harris Structural Steel, of South Plainfield, N.J., fabricated the steel superstructure. These components were then hauled to a staging area at the bridge's west approach. American Bridge served as the erector and used an aerial cableway to span the gorge. In addition to erecting the superstructure, the cableway served to remove the tower crane from the top of the main piers once the shafts were completed.

The superstructure was erected in balanced cantilever, starting off the main pier and a tall falsework tower two panels away on the up-slope side. The falsework towers were tied into the pier tops by a hog truss

on which the initial two chord members were placed. The temporary towers carried only vertical loads and all lateral and torsional reactions had to be completely resisted by the concrete shafts.

Balanced construction proceeded until the superstructure landed on a second falsework tower located two panels away from the truss end. After landing on this support, the first tower was removed and re-erected to build the second half of the bridge.

Once both truss halves were completed, the span was closed. This was accomplished by first lowering the elevation of the end falsework to produce equal gaps in the upper and lower chords and to align the center of the main span. Jacks mounted on the lower chords then pulled the two halves together by deflecting the tall piers. The upper and lower chords were then bolted. The falsework was raised to install the end rocker bents before setting the bridge on its permanent bearings and removing the falsework.

With the truss completed, the floor system was erected, progressing from the west end. The concrete deck followed using normal cast-in-place procedures for steel, multi-beam bridges, with placement also advancing from the west.

The steel bridge forged the final element in West Virginia's Interstate Highway System. Blending beauty with functional, this dramatic span filled the missing link in an important route connecting Norfolk, Va. with St. Louis, Mo. □

# RISA-2D

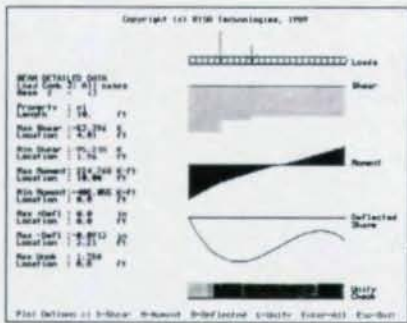
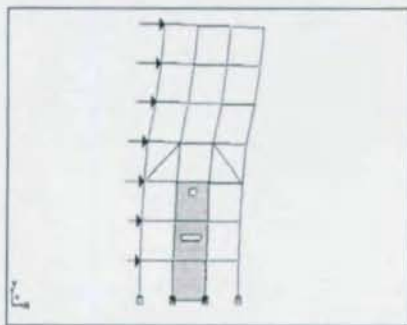
RISA-2D (R) Ver 2.0  
Copyright (c) RISA Technologies, 1987

Node No.	X Coord.	Y Coord.	Boundary Conditions	Note	Elem Type
1	0.00	12.00			1
6	0.00	16.00	STORY 2		24 Beam
7	0.00	24.00	STORY 3		25-AISC
8	0.00	32.00	STORY 4		26-Steel Jct
9	0.00	40.00	STORY 5		27-Steel
10	0.00	48.00	STORY 6		28-Print
11	0.00	56.00	STORY 7		29-Steel/Pl
12	10.00	0.00	1000		30-Node/Pl
13	10.00	0.00			31-Pl Lnk
14	10.00	10.00			32-Steel/Pl
15	10.00	24.00			33-Steel
16	10.00	32.00			34-Steel
17	10.00	40.00			35-Steel
18	10.00	48.00			36-Steel
19	10.00	56.00			37-Steel

RISA-2D breaks new ground in interactive frame and truss analysis and design. Very easy to learn and use, RISA-2D has become a preferred program for hundreds of structural engineering professionals.

- Edit your data using a unique, specially developed spreadsheet that is integrated directly into RISA-2D.
- Performs complete AISC Design, with suggestion of optimal sizes.
- Advanced graphics:
  - A SINGLE keystroke shows the entire frame, with loads and boundary conditions.
  - See the deformed frame with all members plotted in color according to their AISC code check values.
  - Fast and easy zoom windows.
  - Supports EGA, CGA, Hercules.
- Individual member analysis:
  - Loading, shear, moment and elastic curve diagrams.
  - Displays actual and allowable stresses and other values.
- P-delta effects.
- Analyze shear walls, with or without openings.
- UBC 88 lateral force calc's.
- Unparalleled speed of solution, giving displacements, reactions, end forces and AISC checks for all members.

RISA-2D is available for \$400. Call us today for a FREE demo package!



RISA TECHNOLOGIES  
17900 Sky Park Circle  
Suite 106  
Irvine, CA 92714  
1-800-332-7472



## Designer/Structural Engineer

Greiner, Inc.  
Timonium, Maryland

## General Contractor

PCL Civil Constructors, Inc.  
Plantation, Florida

## Steel Fabricator

Harris Structural Steel Company  
South Plainfield, New Jersey

## Steel Erector

American Bridge  
Pittsburgh, Pennsylvania

## Owner/Construction Manager

West Virginia Department of Highways  
Charleston, West Virginia

Thomas D. Jenkins, P.E., is vice president of Greiner, Inc., Timonium, Maryland



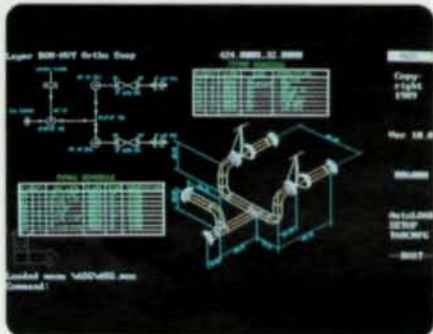
# The First Fully Integrated CAD Solution Should Look Familiar.



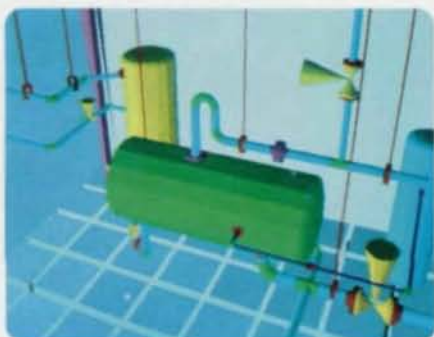
The look and feel of the familiar industry-leading AutoCAD AEC® Architectural.



The best-selling, two-template ASG Mechanical will replace AutoCAD AEC® Mechanical.



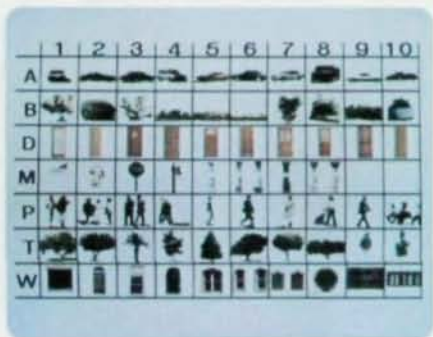
ASG 2-D Piping, creates plan and isometric views in single or double line.



ASG 3-D Piping harnesses the 3-D power of AutoCAD Release 10.



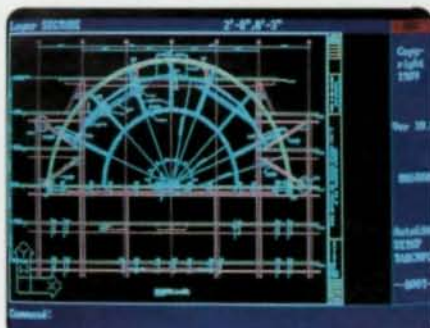
ASG Core is a unique "operating system" of integrated tools and utilities.



ASG Image Library for enhancing drawings, presentations, and renderings.



Standard, shared "look and feel" to all ASG templates, screen menus, pull-downs and icons.



The state-of-the-art ASG Structural.



The ASG Video Trainer Series, a self-paced productivity-building tool.

The products in ASG's integrated CAD solution are familiar because you know many of them already. As the best-selling, industry-leading, award-winning products of Archsoft and Chase Systems.

The companies with the largest installed user and dealer base in the AutoCAD third-party development industry.

Archsoft and Chase Systems

have come together as ASG with one purpose in mind. To bring you the industry's first genuinely integrated product line. A line with a *standard user interface*



THE INTEGRATED CAD SOLUTION™

across all of it. And backed with comprehensive training tapes, a video library, and a strong customer service program.

Now configured with a shared interface, all existing Archsoft and Chase Systems products will be released under the ASG name, starting this month. And they'll be joined shortly by a growing line of additional, productivity-building CAD products from ASG.

## PRIMER/FIREPROOFING COMPATIBILITY

Underwriters Laboratories, Inc. recently issued new guidelines on the application of spray-applied, fire-resistive coatings to painted structural steel framing. These new guidelines can increase costs significantly when these coatings are applied to structural steel framing that has been painted. As a result, any projects that may involve the application of spray-applied, fire-resistive coatings to painted structural steel should be assessed carefully in light of the new UL guidelines.

### Background

For many years, the American Institute of Steel Construction specifications have not required the use of paint when structural steel framing "will be concealed by interior building finish or will be in contact with concrete." Statements to this effect are included in the current editions of both the ASD (Sect. 1.24.1) and LRFD (Sect. M3.1) specifications published by AISC. The Commentary to the LRFD specification supports this provision with the following discussion:

"The surface condition of steel framing disclosed by the demolition of long-standing buildings has been found to be unchanged from the time of its erection, except at isolated spots where leakage may have occurred. Even in the presence of leakage, the shop coat is of minor influence."

In spite of the AISC specifications, some paint manufacturers are promoting the use of primers beneath fire-resistive coatings. In response to an apparent increase in the use of primers in some geographic regions, Underwriters Laboratories has conducted a limited study of the adhesion of spray-applied, fire-resistive coatings to painted structural steel. This study has resulted in the issuance of new guidelines in the 1989 *UL Fire Resistance Directory* (Design Information Section—Sprayed Material).

### UL Guidelines

The new UL guidelines specifically permit the application of spray-applied, fire-resistive coatings to painted steel with these significant restrictions:

- For beam applications, the web depth cannot exceed 16 in. and the flange width cannot exceed 12 in.
- For column applications, neither the web depth nor the flange width can exceed 16 in.

Within these size limitations, fire-resistive coatings may be spray-applied to painted structural members, provided that bond tests indicate the fire-resistive coating will adhere adequately to the painted steelwork. Depending on the characteristics of the paint and fire-resistive coating, a bonding agent may be required. If these size restrictions are exceeded or the fire-resistive coatings fails the required bond tests, the structural shape must be wrapped with steel lath. In some cases, deck discs can be welded to the steel framing in lieu of steel lath. Either alternative will result in cost increases that should be considered prior to specifying the use of shop or field primers. It should also be pointed out that UL is considering the establishment of a testing, classification and follow-up inspection service for primers that can be applied to structural steel prior to the application of fire-resistive coatings. As a result, specific primers may be available that can be used beyond the previously described limitations.

So as to indicate the potential impact of the new UL guidelines, the following tabulation indicates some of the wide-flange shapes that will meet the specified size restrictions:

	Beams	Columns
6" Series:	All	All
8" Series:	All	All
10" Series:	All	All
12" Series:	W12 x 65 & lighter	All

	Beams	Columns
14" Series:	W14 x 82 & lighter	W14 x 257 & lighter
16" Series:	All	—
18"-40" Series:	None	—

Note: This tabulation was developed based on the assumption that web depth is equal to selection depth less twice the flange thickness.


As can be seen, many structural shapes will not meet the UL size restrictions and either steel lath or deck discs will be required if the steel is painted with a primer which is not UL-classified for use beneath the specific spray-applied, fire-resistive coating.

### Summary

- AISC does not require the use of primers for structural steel that will be concealed by interior building finish or in contact with concrete.
- UL does not require the use of primers beneath spray-applied, fire-resistive coatings, except for a limited number of very specific designs. In general, UL specifies the steel must be clean and free of dirt, loose scale and oil.
- The 1989 *UL Fire Resistance Directory* should be reviewed carefully before a primer is specified in conjunction with a spray-applied, fire-resistive coating.
- If a primer is to be used on structural steel that will be protected with a spray-applied, fire-resistive coating, both the paint manufacturer and the manufacturer of the fire-resistive coating should be contacted for guidance. Depending on the circumstances, bond tests and/or mechanical anchorage will be required.
- It should be emphasized, this issue only affects structural steel framing. It does not impact the use of pre-painted or galvanized steel decks specifically recognized in UL designs, nor does it affect the use of painted steel joists that are specifically included in UL designs. □

# N-R-G Flor<sup>®</sup> from Walker.

After 30 years, it's a better value than ever.



N-R-G Flor cellular floor is at work in buildings like Chicago's Sears Tower and Amoco Building, IBM Headquarters in New York, and the Hewlett Packard Building in Roseville, California. And its history of performance is only part of the story, because now N-R-G Flor is backed by a service package that's unique in the industry.

When you specify N-R-G Flor, you're also specifying national distribution through Walker's agent network. Single-source availability of cellular and non-cellular deck, bottomless and full-bottomed trenchduct and a wide range of service fittings. On-time delivery, sequenced however you need it. Factory labeling of every piece, with organized bundling and clear instructions. And backup service from a Walker project manager who's even available on-site if needed.

Behind every N-R-G Flor system are 30 years of structural expertise

and 60 years of experience and innovation in PLEC (power, lighting, electronics, communications) distribution systems. So your cellular floor is not only a code-approved structural element, but also a flexible, cost-efficient, engineered system of PLEC distribution.

Chances are any electrical contractor knows Walker. So ask around. You'll hear about a level of service that's more than unique—it's invaluable.

For a free copy of our N-R-G Flor Design Guide, call 1-800-222-PLEC.

U.L. classified and listed.



**Walker**<sup>™</sup>

P.O. Box 1828, Parkersburg, WV 26102 (304) 485-1611

A DIVISION OF BUTLER MANUFACTURING COMPANY

**PLEC**  
DISTRIBUTION  
ALTERNATIVES

# OUR TIMELY DELIVERY TO WOMEN'S AND



# ERY MEANT A LOT NFANTS' HOSPITAL.

Both Vulcraft steel joists and steel deck were used to build the new hospital in Alexandria, Louisiana.

And so did the fact that our steel joists are very economical. Fact is, Vulcraft was the perfect choice for meeting schedules and keeping construction costs down. First, because our joists are easy to erect—a fact that saves time and money on virtually any job where they're used. Second, because they cost less than alternative structural systems. And third, because Vulcraft is known for on-time delivery, so construction schedules are met and costly delays avoided.

True to form, we delivered the joists—as well as our steel deck—to the hospital site on Vulcraft trucks, exactly on schedule. And the hospital was brought into the world with the greatest possible ease.

It's this kind of dependability, along with the time-tested quality of our products, that's made Vulcraft the largest joist manufacturer in the country. And made us a welcome addition to all kinds of building projects.

To find out how we can help you build structures faster and more economically, contact any of the plants listed below, or see Sweet's 05100/VUL and 05300/VUL.

**VULCRAFT**

A Division of Nucor Corporation

P.O. Box 637, Brigham City, UT 84302 801/734-9433; \*P.O. Box F-2, Florence, SC 29502 803/662-0381; P.O. Box 169, Fort Payne, AL 35967 205/845-2460; \*P.O. Box 186, Grapeland, TX 75844 409/687-4665; \*P.O. Box 59, Norfolk, NE 68701 402/644-8500; \*P.O. Box 1000, St. Joe, IN 46785 219/337-5411. \*Deck manufacturing locations. Architect: Barron, Heinberg & Brocato; Structural Engineer: Perrault & Perrault; Steel Fabricator: Russellville Steel Sales and Service, Inc.; General Contractor: Tudor Construction.

# When you are the Engineer of Record— specify galvanized for the decking.



Seattle, WA



The mandate is clear: the engineer-of-record is responsible for specifying a deck coating that will last the full 30-50 year lifetime of a commercial steel frame structure.

With that kind of responsibility, galvanized steel decking by ASC Pacific is a must.

ASC Pacific galvanized steel deck coating, which conforms to ASTM 525, meets or exceeds all American Society of Civil Engineers and Steel Deck Institute coating recommendations.

It also stands up to some very unusual punishment:

Almost a decade ago, construction stopped on a high-rise project in Los Angeles. For the next eight years ASC

Pacific's galvanized steel decking sat exposed to the elements on the partially completed steel frame.

A new development company decided to complete the project and brought in specialists to test the integrity of the structural steel deck and the state of its galvanized coating.

"We tested the galvanized coating on the job site," said Jim Partridge of

Smith-Emory Testing Lab, "and found that it met the same standards as when it was first delivered. No structural decking had to be removed."

And that's why when you are the Engineer of Record you can depend on ASC Pacific for the long-life protection of galvanized steel structural decking.

**ASC  
PACIFIC  
INC.**

2110 Enterprise Boulevard  
West Sacramento, CA 95691  
916-372-6851 or 800-952-5605

# Steel's Flexibility

## POLYMER SCIENCE BUILDING Commitment to Tomorrow

by Shakti P. Gautam

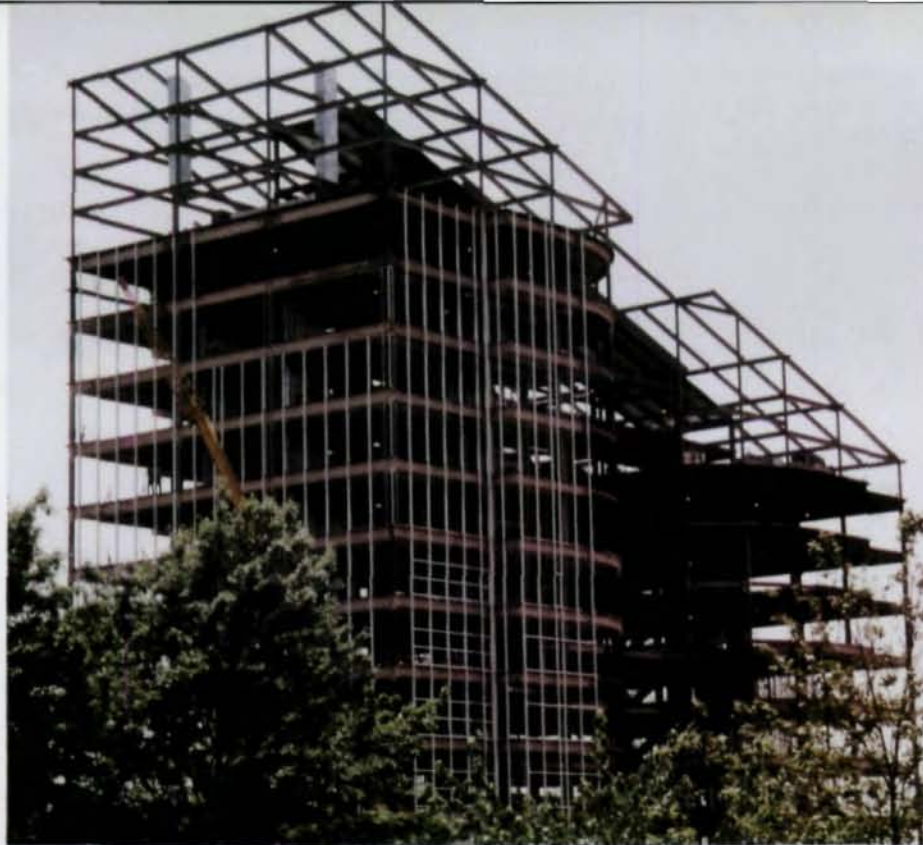
The Polymer Science Building, located on the campus of the University of Akron, was designed to be the best polymer research facility and home of the best polymer research program in the world. The commitment for a new facility was very logical for the university which, at the time, had one of only three such programs in the U.S., and whose neighboring corporations were investing heavily in polymer research.

The university's goals were to construct a state-of-the-art facility, conducive to research and education, while making a dynamic architectural account to the community about its commitment to tomorrow's technologies. It was also important that the users of the facility be safeguarded from the hazardous effects of toxic chemicals, pressurized gases and potential laboratory explosions. With these guidelines, it was imperative to assemble a design team able to work together to define, and continuously refine, the relationship of architectural form and mechanical requirements to structure, while ultimately designing a unique and functional facility.

The final design of the facility consists of two towers, nine and 12 stories, framed in steel and wrapped with a glass curtain wall. Both towers, containing laboratories and offices, are linked together at each level by a stair tower and commons area. A steel-framed canopy rises 60 ft above the 12-story tower and slopes down to the nine-story tower, integrating the two into a



*Model of Polymer Science Building*



Views of intricate steel framing of Polymer Science Building.  
Below, typical atrium connection

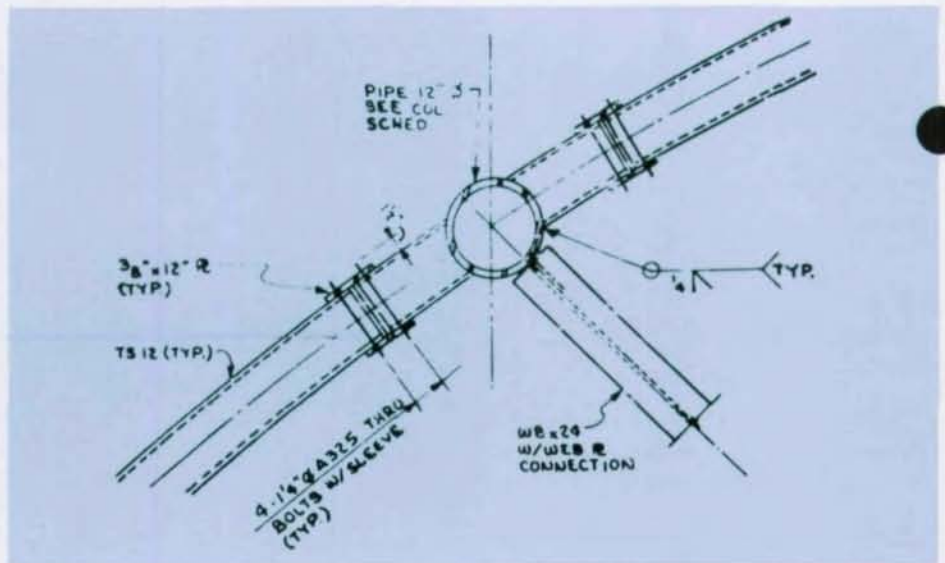
single building with an oblique roof. Adjacent to the east wall of the 12-story tower is a three-story auditorium.

### Steel a Design Choice

In preliminary design stages, the use of plastic (polymer) members as structural elements was considered, but, because of required design criteria, this was technically and economically unfeasible. More conventional materials were then considered and steel chosen because of its cost and flexibility.

Various structural systems were developed and evaluated during preliminary stages. Initial studies focused on using the vertical circulation cores of each tower to provide the required stiffness. But it was determined the core walls contained too many openings to be used efficiently. Moment-resisting frames, exterior braced bays and combinations thereof were then evaluated, with the decision that moment-resisting frames provided the most economical and least obtrusive system. And, by featuring moment-resisting frames in both directions, it was possible to utilize the stiffness of both towers to overcome the slenderness of each tower. Furthermore, by locating the frames primarily on interior column lines, the depth of the spandrel beams, as seen through the curtainwall, was kept shallow to emphasize the visual lightness of the structure.

The project constraints dictated a shallow



low floor construction depth which required careful selection of member sizes. Steel framing permitted a shallow and uniform depth of construction in the laboratory areas, with an extensive network of mechanical ducts and hoods located within the ceiling. Deeper girders along the rigid frames permitted supply and return ducts to penetrate the beam webs.

### Unusual Structural Design

Some of the architectural features on the project that required unique structural design and detail applications include the atrium areas and the main atrium staircase

on the lower levels. The open atriums at the inside corners in both towers are three to five stories in height and alternate between various bays from ground level to roof. Because of the aesthetic requirements, pipe columns and tubular spandrel beams emphasize the lightness of the framing. The 12-in. diameter pipe columns were detailed in lifts of three to five stories to avoid expensive field-welded column splices and permit quicker erection. Curved structural tubes were used for spandrel beams in the atriums because they provided the most economical torsional section properties required to carry





Photo of model of new science building

the curved glass curtainwall. And, by employing tubes, it was possible to detail shop-fabricated stubs off the pipe columns for quick erection with simple, field-bolted splices of the spandrels.

The main atrium staircase rising from the entry level to the second and third floors is located in the middle of a five-story atrium. The unique feature of this stair is that intermediate landings between floors appear to be floating in the air approximately 15 ft from the face of support. The structural framing for the stair consists of structural tubes cantilevering off each floor to support the stair treads and landings in a scissors fashion. Tube members were again selected for their efficient torsional properties and pleasing appearance.

The Polymer Science Building, scheduled for completion next Spring, has about 150,000 sq. ft of floor area and a construction budget of \$13.5 million, not including lab equipment and furniture. Not only did the cost of the 1,200 tons structural steel used come in below project estimates, but also it was erected two months ahead of schedule. □

**Architects** (joint venture)

Richard Fleischman Architects, Inc.

Lawrence Dykes Bower and Clancy Architects Planners

Harris/Day Architects, Incorporated  
Cleveland, Ohio

**Structural Engineer**

Gensert Bretnall Associates  
Cleveland, Ohio

**General Contractor**

Kokosing Construction, Inc.  
Fredricktown, Ohio

**Owner**

State of Ohio Department of Administration  
Services and The University of Akron

*Shakti P. Gautam is a project engineer with Gensert Bretnall Associates, Cleveland, Ohio.*

**1989-90  
EDITION**

*Just Published!*

**NEW  
and  
UP-DATED**

**EXPANDED  
TO INCLUDE  
SPECIFICATIONS  
AND COMMENTARY FOR  
CELLULAR METAL  
FLOOR DECK WITH ELECTRICAL DISTRIBUTION.**

For 50 years the Steel Deck Institute has provided uniform industry standards for the engineering, design, manufacture, and field usage of steel decks.

**NOW AVAILABLE—ORDER YOURS TODAY!**

**Steel Deck Institute,  
Design Manual**  
For Composite Decks,  
Form Decks, Roof Decks,  
and Cellular Metal  
Floor Deck with  
Electrical Distribution

**PRICE**

**\$11<sup>00</sup>**

Send checks, postal, world moneyorder, drafts  
in U.S. currency.

**QUANTITY**

\_\_\_\_\_

**NEW AND UP-DATED** Design Manual For Composite  
Decks, Form Decks, Roof Decks and Cellular Metal Floor  
Deck with Electrical Distribution

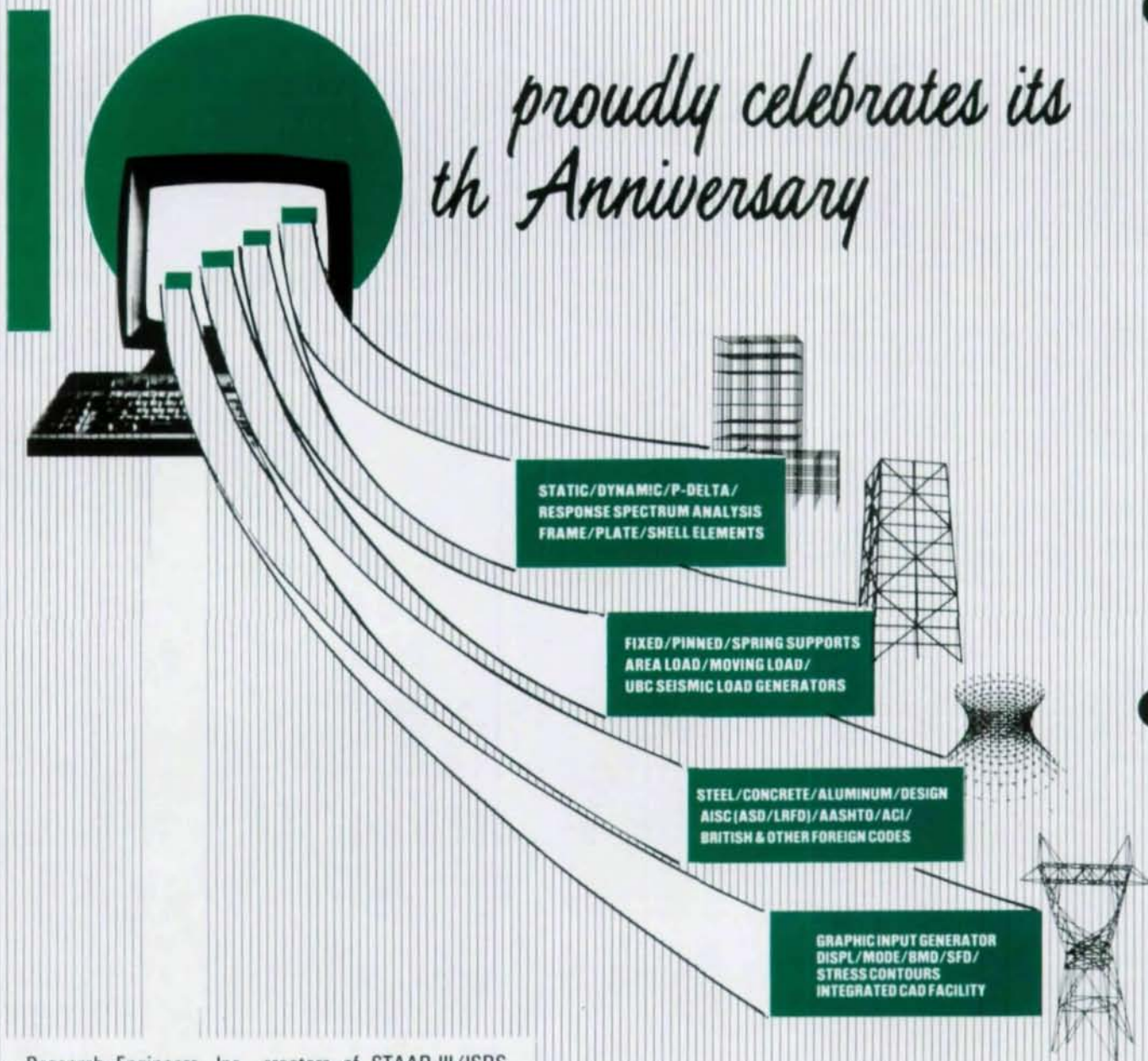
US Currency Total \_\_\_\_\_  
Out of USA surcharge, 15% \_\_\_\_\_  
Add on for Airmail \_\_\_\_\_  
**TOTAL ENCLOSED** \_\_\_\_\_

**STEEL DECK INSTITUTE, INC.**

P.O. Box 9506 Canton, Ohio 44711 (216) 493-7886

# STAAD-III/ISDS STRUCTURAL ANALYSIS AND DESIGN

*proudly celebrates its  
10<sup>th</sup> Anniversary*



Research Engineers, Inc., creators of STAAD-III/ISDS, won't be commemorating the program's tenth anniversary with the usual fanfare. Instead, this energy will be directed towards extensive R & D and continued outstanding customer support. Striving to meet their users' needs, REI has established STAAD-III/ISDS as the leading software system of its kind. Computer-aided structural analysis and design ground is constantly being broken with STAAD. REI's mission throughout the next decade will be setting higher software standards and maintaining the leadership in the industry.

STAAD-III CELEBRATES THE  
**10**  
1978-1988  
FIRST TEN YEARS

**Research  
Engineers, Inc.**

A reputation you can build on.

303 Pavilions at Greentree, Marlton, N.J. 08053, U.S.A.  
Tel: (609) 983-5050 Tx: 4994385 Fax: (609) 983-382

# When The Bridge Was Out, We Came Across.



Aerial view of Thomas E. Dewey Thruway after bridge collapsed.

## Collapse tate N.Y.

### BRIDGE COLLAPSE IN NEW YORK

All Other Bridges  
To Be Checked For

AMSTERDAM, N.Y. — New York State Thruway faces up to a year or more of closure following the collapse of the Schoharie Creek Bridge in upstate New York yesterday of the State Thruway Authority.



### New York Thruway Extended

Few Alternatives Seen For

ALBANY, N.Y. — New York State Thruway officials are in a quandary following the Sunday collapse of the Schoharie Creek Bridge in upstate New York near Amsterdam. More than 800 vehicles were stranded on the bridge.

## Thruway Span Collapse Threatens Upstate N.Y.

### 15-MILE DETOURS SEEN FOR COMMUTERS

AMSTERDAM, N.Y. — There's no getting around it — without a lot of difficulty, that is. The Schoharie Creek Bridge failure last Sunday is going to be a headache for motorists as the Thruway Authority faces the task of getting around it — without a lot of difficulty, that is. The Schoharie Creek Bridge failure last Sunday is going to be a headache for motorists as the Thruway Authority faces the task of getting around it — without a lot of difficulty, that is.

that's not even counting delays to be added due to extra traffic. Because the bridge is expected to be out for nearly a year and a half, highway officials have asked businesses along the route to consider changing their hours of operation to allow motorists the extra time to avoid traffic problems during rush hours.

It was the worst flooding upstate New York had seen in thirty years.

As the swollen waters of the Schoharie Creek raged out of control, the four-lane bridge above it gave way. So, the New York State Thruway Authority faced some tough problems. They simply couldn't afford a prolonged bridge closure at this vital link of Interstate 90.

They didn't have to. The bridge fabricator responded to the urgent need with a tight delivery schedule. And Lukens backed our customer by committing to quick delivery of stripped steel plate. We both came across — two of the reasons the bridge was finished in nine months instead of the original estimate of eighteen.

Stripped plate comes from Lukens flame cut

up to 1250" long and down to 10" wide. So you don't need to invest in cutting equipment or use up valuable manpower and shop space. It's also delivered with prepared edges ready for fabrication. So it saves you time as well.

Solid reasons to consider Lukens stripped plate the next time you want to go over big. Ask for our brochure when you call Bob Wright, Application Engineering Manager, Lukens Steel Company, Coatesville, PA 19320. (215) 383-3342.

# Lukens Steel

The specialist in plate steels.

## Drama in Steel

# WASHINGTON STATE CONVENTION CENTER

## A Jewel Crowns an Interstate

by John B. Skilling, Jon D. Magnusson and Ad A. Gouwerok



*Dramatic cascading lobby of Washington State Convention and Trade Center, Seattle.*

The \$130-million Washington State Convention and Trade Center—a 10-level, 1,000,000-sq. ft facility constructed over Interstate 5 in downtown Seattle—spans three city streets and 12 freeway lanes.

The structure is framed in structural steel. Sixteen major trusses up to 90 ft in depth carry the gravity loads, as well as wind and earthquake loads. The arrangement of these trusses permitted the development of three levels of parking for 1,000 cars below the exhibition floor.

In 1981, the Washington state legislature passed a bill for issuance of a bond to provide funding for the design and construction of the Washington State Convention and Trade Center. A design committee was chaired by James Ellis, a driving force behind many public projects in Seattle. At that time, a design team was chosen which consisted of TRA, the managing architectural firm on this most challenging project, and HNTB. The structural engineering was to be provided by Skilling Ward Magnusson Bark-

shire Inc. The first task this team had to face was site selection, narrowed down to three sites:

1. At Seattle Center.
2. Near the present stadium facility (the Kingdome).
3. Air rights over the I-5 freeway.

After trial designs and long and careful economic study, the I-5 freeway site was chosen.

### Freeway Site

Structurally, this was certainly the most challenging site. Only about 25% of the footprint of the Convention Center would touch down on available land; The remainder would span the busiest stretch of freeway in the Northwest, namely, 12 lanes of I-5. Several schemes were studied at that time, one of which was a concrete "lid" covering the freeway completely, similar to the nearby Freeway Park—only far stronger because of the far heavier loads needing to be supported. The convention center would be placed on top of this concrete lid. But this concept was rejected, because it could not be built within the budget.

### Structural System

At that time, the State Convention Center joined forces with a public developer. Included in the project would be a retail area and a parking garage for about 800 cars. With this information available, the design team went to work. The parking garage gave an excellent opportunity to provide a most economical steel-truss base for the heavy convention center. It would be the parking garage which varied from one to three levels. Rather than supporting each level on its own

trusses, the total depth of the parking levels was used. The trusses were to be one to three levels deep. This would create up to 45-ft deep trusses spaced 60 ft o.c. The 60-ft space between the trusses is to be used for an efficient parking layout. The bottom chord of the trusses would be in the lowest parking level and the top chord in the roof over the topmost parking level. Where the exhibition hall walls allowed, some trusses would actually be 100 ft deep, the top chord being in the roof of the convention center. The trusses would also act simultaneously as braced frames.

This top floor over the topmost parking level is also the convention center exhibition floor, able to carry loads of up to 350 psf or the AASHTO HS20-44 truck loading. Over this exhibition floor would be another floor of meeting rooms and a smaller exhibition hall able to carry loads of 150 psf. in addition to these heavy loads, the roof over the whole structure has been designed to carry a future park with a soil depth of three to four ft, enclosing an expanse of water as a feature of the park.

### Economy and Efficiency

All this loading would have been economi-

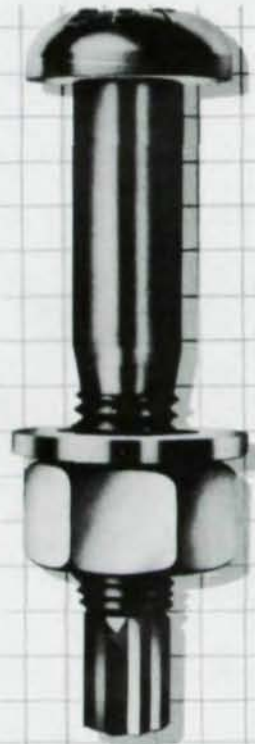


Traffic moves at regular pace despite massive construction overhead.

# T.S.® Bolts & Tools

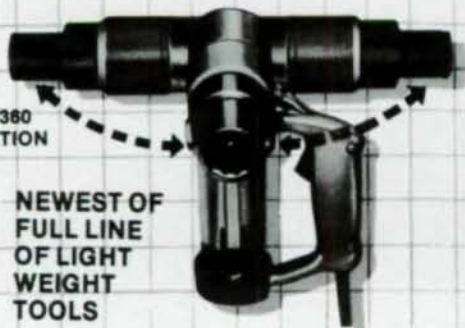
I.C.B.O. Listed

Full range of certified A325 and A490 bolts and complete complement of tools for installation, including "Tone" tools and the new TSW 60LC high speed, swivel head tool.



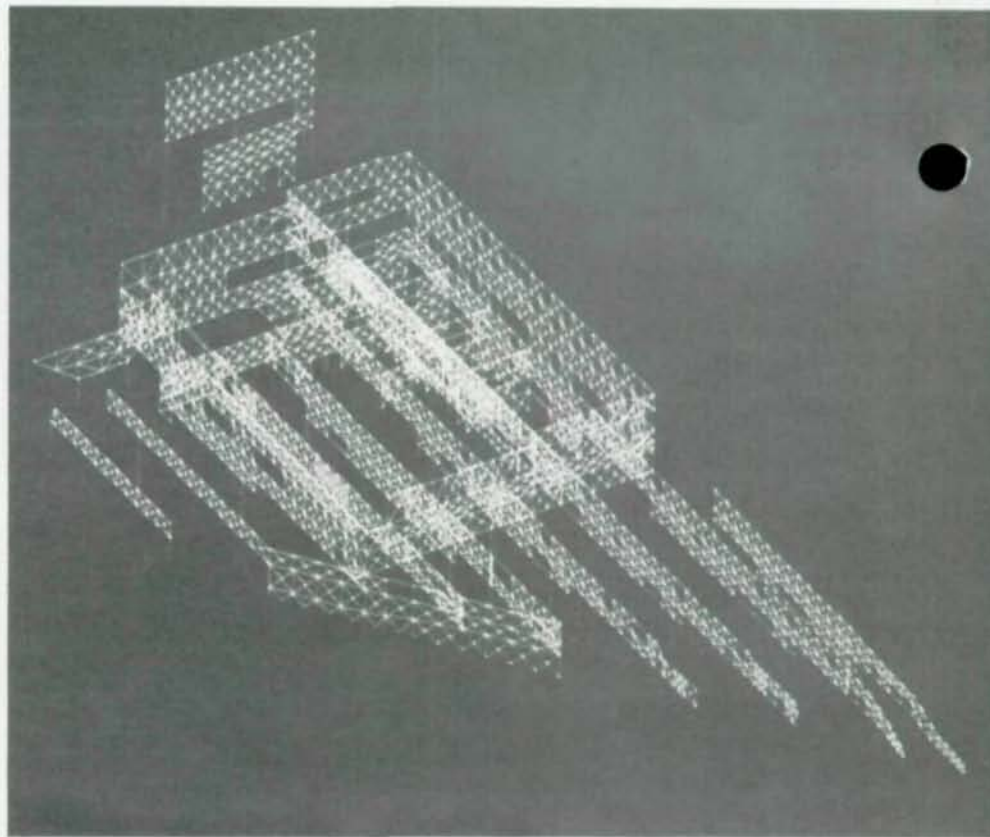
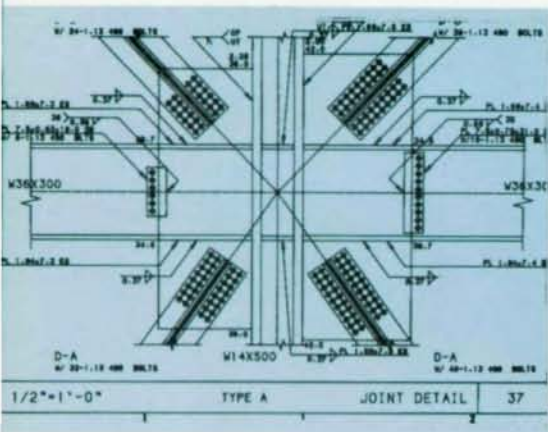
FULL 360  
ROTATION

NEWEST OF  
FULL LINE  
OF LIGHT  
WEIGHT  
TOOLS



**BRISTOL** MACHINE COMPANY  
**cfs** Construction Fastener  
Systems Division

630 E. Lambert Road, Brea, CA 92621 • 714-990-6555  
WATS 1-800-872-6587



Computerized design of connections  
Over 19,500 tons of structural steel  
straddle freeway.

## Window Wall/Curtain Wall Mockup Testing



Wilshire/Westwood, Los Angeles  
Granite and Aluminum/Glass Window Wall Mockup ready  
for Dynamic Water Infiltration Test.

### SMITH-EMERY COMPANY

The Full Service Independent Testing Laboratory, Established 1904  
781 East Washington Blvd., Los Angeles, California 90021  
213/749-3411 • Fax 213/746-7228



- Testing Facility is 45-foot high by 70-foot long; 300 psf loading capacity.
- Per ASTM and AAMA Specifications.
- Computer aided data acquisition with instant deflection readings +/- .001 inch.
- Dynamic Tests using 2000 HP Aircraft Engine w/13.5 foot propeller.

cally impossible to support were it not for the three-level deep steel trusses integrated in the parking structure below and the full structure depth 100-ft high trusses. Even though the structural steel supports these enormous loads and soars over a freeway with spans of up to 160 ft, the total weight of steel used on this project is 19,500 tons, which translates to about 35 psf of steel. An efficient parking system was accomplished by eliminating certain bracing panels, thereby creating strategically located driveways through the trusses from one aisle of parking to the next.

### Seismic Design

An extensive seismicity study has been performed by Shannon and Wilson, geotechnical consultants on the Washington State Convention and Trade Center. It was decided the seismic design for the structure would be evaluated using two earthquake levels, similar to the Design Basis Earthquake (DBE) and Operating Basis Earthquake (OBE) recommended by the U.S. GSA (1978). The DBE is defined as an event having a recurrence interval of 200 years. It is expected that, although the structure would receive some damage in this earthquake, causing some members to exceed the AISC allowable stresses but not the steel yield stress, collapse would not occur. The OBE is intended to represent an earthquake which is quite likely to occur during the life of the structure.

It is defined as having a recurrence interval of 50 years. Analysis for the OBE is intended to reflect the elastic behavior of the building with no structural damage. The stresses would not exceed the AISC allowable stresses. Given the above criteria, the geotechnical consultant determined the two spectra for the "design earthquake" and the "maximum credible earthquake." A dynamic analysis was performed on the structure using these two spectra.

A computer model was generated to study the structural behavior under both static and dynamic loadings. This model, which required 22,000 lines of input, was developed on our IBM 370 mainframe, using a version of STRUDL. The number of nodes and members in the model are 1,700 and 4,800 respectively. The STRUDL program calculated the member forces and a post-processor designed the members based on these forces. The member sizes were put back in the STRUDL model and reanalyzed. Redistribution of the stiffness redistributed the forces. An iterative process (four iterations) was used to come to the final sizes. The structure was analyzed for six static and 12 dynamic loading cases.

#### Redundancy and Ductility

To provide the safest possible structure, a very redundant system of cross-diagonal bracing was chosen. Wherever possible, the gusset plates and bracing elevation panels received cross bracing rather than a single brace, providing a high degree of redundancy. Further safety has been built into the structure by having all beam and column intersections in all trusses and braced frames moment-connected to each other, thereby providing a high degree of ductility in the system. Even though this moment frame was not required by code, it was decided to use this design philosophy to increase ductility and axial strut capacity.

As pointed out earlier, only 25% of the footprint of the structure touches the ground in a triangular area immediately to the northwest of the freeway. This area was used structurally as an anchor for the building. The anchor is a grid of 12-ft by 10-ft grade beams supported by 10-ft dia. drilled piers extending up to 100 ft into the ground. Diagonally across from this anchor on the other side of the freeway, another grade beam supported on 10-ft dia. drilled piers provides rotational stability, and at the same time allows for possible temperature movement of the structure toward and away from the anchor.

#### Architecturally Exposed Structural Steel

With most convention centers or similar buildings, a dramatic expression of structure was sought. The lobby at the entrance into

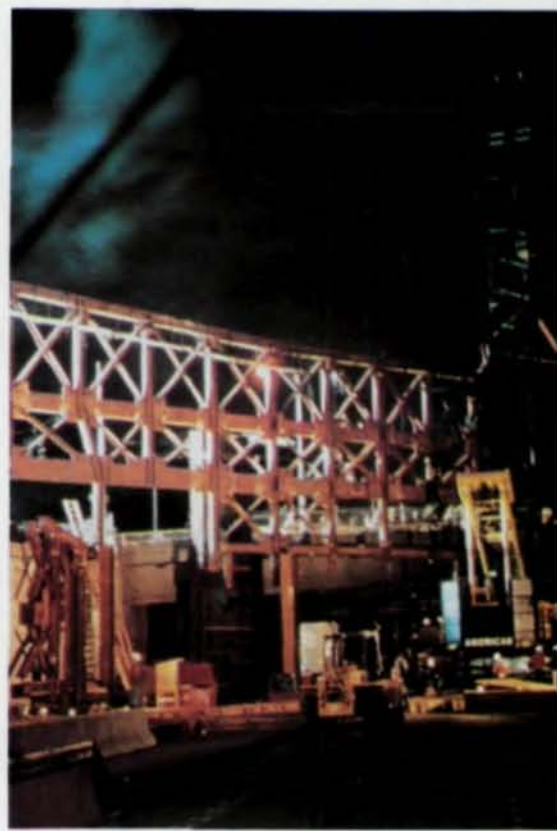
the exhibition hall is covered by a cascading roof, spanning up to 120 ft. The lobby area needed to be free of columns. The solution was a two-way arching moment space frame with all horizontal members 27-in. wide flanges and all vertical members 12-in. x 12-in. tube columns. All this is architecturally exposed structural steel.

#### Connection Design Economy

In recent years, concerns have been raised by the structural engineering profession, as well as different public agencies, regarding the fact the fabricator—and not the engineer of record—is designing connections.

Our firm has already been designing the connections on numerous major projects. This does not mean an increase in overall cost to the owner—actually, quite the opposite is true. When all the connections are completely designed and on the drawings, the fabricator/erector will not have any unknowns.

Another point to consider is that design parameters for connections are becoming more and more complex. They depend on a multitude of different loading combinations. So as to make economical connections, all



Truss erection roars on during night.

## QUALITY STEEL ABRASIVES QUALITY SERVICE

#### Economical Blast Cleaning

A half century of skill and experience in creating steel shot and grit with the chemistry, microstructure, size and hardness to get your blast cleaning done both economically and efficiently.

#### Quality Customer Service

From fast delivery through our national distributor network to a technical staff ready to assist you in proper specifying, problem-solving, on-site inspection and in-plant instruction, we're ready to get your job done right.

To discuss your project or for pricing, call or FAX.

#### NATIONAL METAL ABRASIVE, INC.

P.O. Box 158 • 142 Auble St.  
Wadsworth, OH 44281  
(216) 334-1566  
FAX: (216) 334-1456



# ARE BOLTS CAUSING YOU UNDUE TENSION

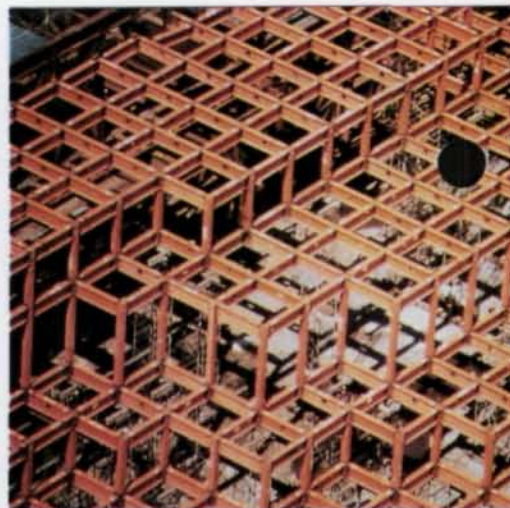


## LEJEUNE SMART BOLTS KNOW "PROPER TENSION!"

A-325 or A-490 high strength bolts.  
Factory mill certification—traceable to each keg.  
Black or mechanically galvanized.  
Full domestic or open stock.

**"THE LOWEST COST SYSTEM FOR PROPERLY  
INSTALLED HIGH STRENGTH BOLTS!"**

LEJEUNE BOLT COMPANY  
8330 West 220th Street  
Lakeville, Minnesota 55044  
For Information or Technical Assistance  
Call 1-800-USA-BOLT (872-2658)  
FAX 1-612-469-5893



Top view of arch—exposed lobby steel.

the different design parameters should be taken into consideration. Because of their complexity, it is impossible to put all the criteria and loading combinations on the drawings in such a way as to be useful to the fabricator.

### Convention Center Jewel

Presently, the convention center is open for business—on or close to the original schedule—with its first convention held in June 1988. The Washington State Convention and Trade Center is an economical asset to both the Seattle and the State of Washington, one of many jewels in the Emerald City.

### Architect

TRA and HNTB

### Structural Engineer

Skilling Ward Magnusson Barkshire Inc.

### General Contractor

Paschen Contractors

### Geotechnical Consultant

Shannon and Wilson

### Owner

Washington State Convention and Trade Center

John B. Skilling is chairman, Skilling Ward Magnusson Barkshire Inc., Seattle, Washington.

Jon D. Magnusson is chief executive officer of Skilling Ward Magnusson Barkshire Inc.

Ad A. Gouwerok is senior vice president, Skilling Ward Magnusson Barkshire Inc.



# Introducing the Software Solution for Structural Engineers and Detailing Professionals

The most complete integrated software programs available for producing engineering plans, details and fabrication drawings

## AutoPE Structural

- Comprehensive industry specified material libraries
- Powerful applications programs for:
  - framing plans • foundation plans • structural concrete plans • tilt-up panels • elevations, sections & details • 3D wire frame diagrams
  - full engineering construction plans
- Render ready models
- Bi-directional Analysis/Design interface
- Demonstration videos and demo disk are now available.

## Structural Detailer

Provides a complete detailing environment for producing finished shop fabrication drawings, erection drawings and bolt setting plans, giving you complete control over drawing construction and appearance.

- Interactive graphic drawing and editing
- parametric programs for detailing all types of steel shapes and connections including:
  - beams • columns • bracing • erection drawings • anchor bolt plans • field bolt generator • dynamic dimensioning
- Ability to create specialized and custom details
- Computerized catalogues of AISC, CISC, BS4 and DIN steel components
- Bill of material weights calculated automatically
- Intelligent detail member manager

*D.C.A. Structural is used inside AutoCAD®*

AutoCAD® is a registered trademark of Autodesk, Inc.



## D.C.A. Engineering Software

*Unifying the AEC World with a Single Source for Solutions*

P.O. Box 955, Henniker, NH 03242 (603)428-3199 FAX (603)428-7901

---

# Creative Remodeling

---

## New Skin Profile Made Possible with Welded Trusses

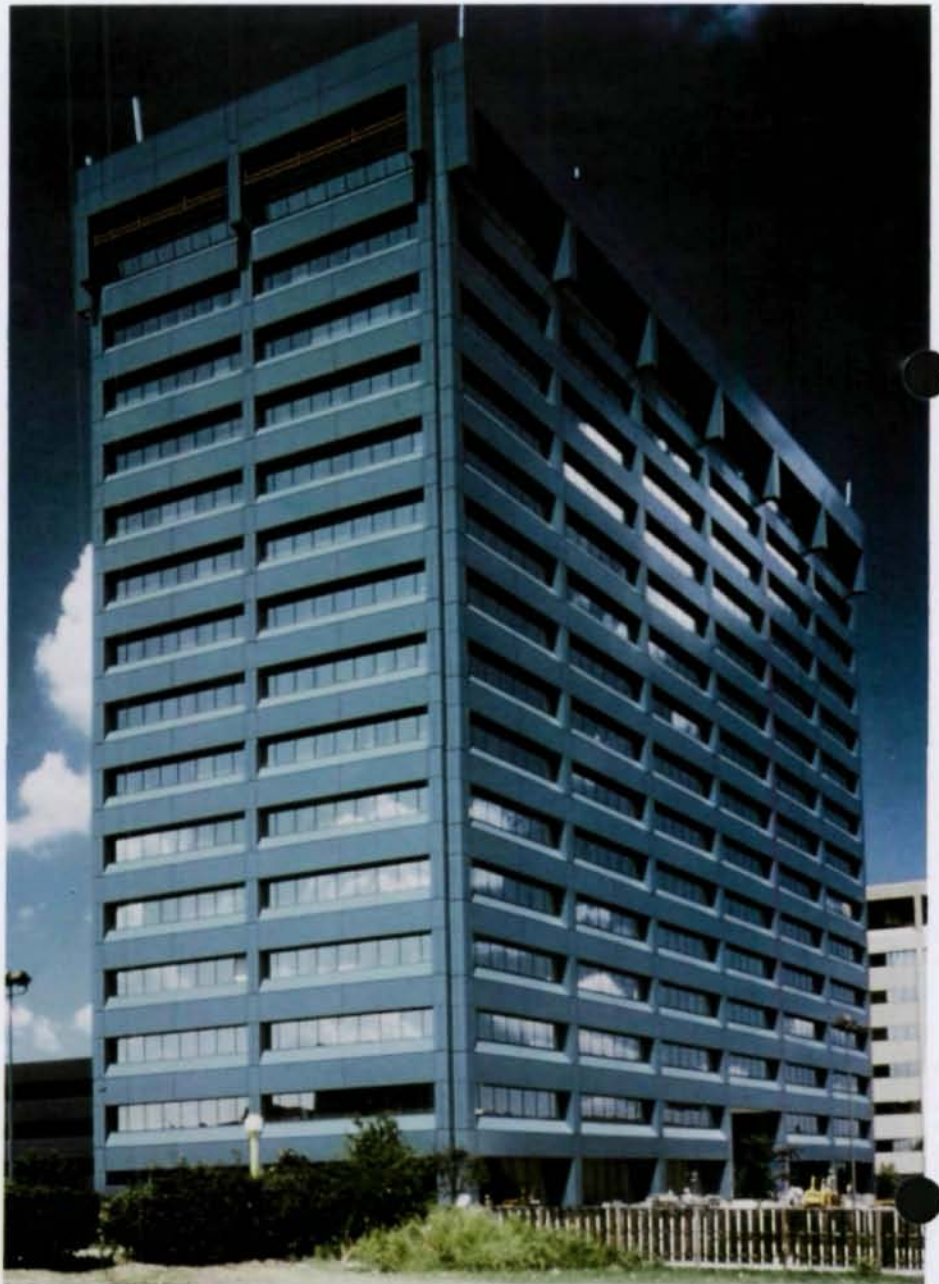
by K. S. Rajagopalan and Robert G. Williams

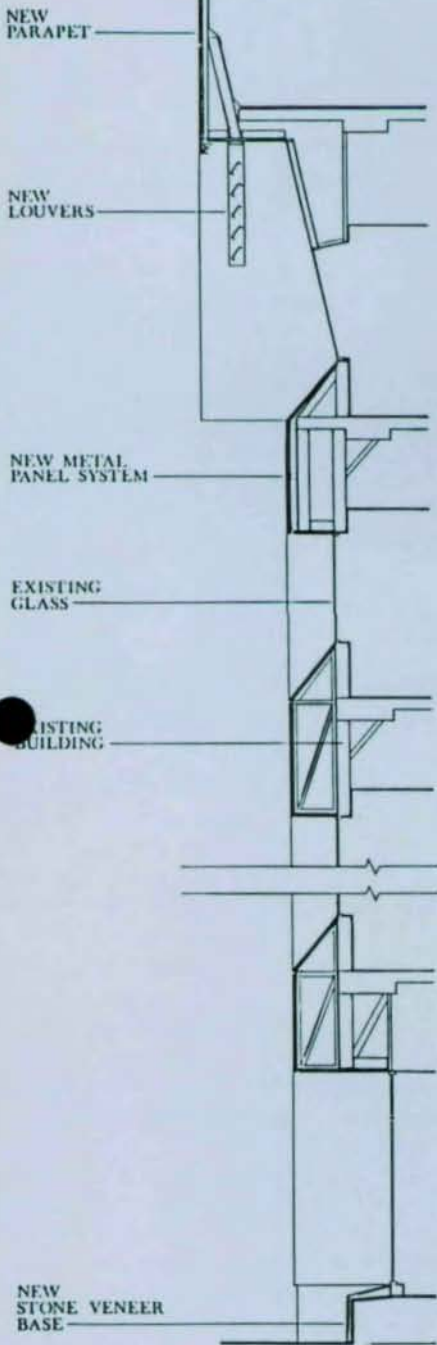
A new owner acquired a 15-story office building. Its building framework is in post-tensioned concrete beams and slabs with reinforced concrete columns. The water penetration problem through the building skin existing at the time of the ownership change had to be remedied. A design team of architect, structural engineer and contractor was formed and given the task of (1.) creating a new look to the building, (2.) stopping the penetration of water through the existing building curtain wall, and (3.) doing all this without disrupting the daily operation of building tenants who occupied the various floors.

The architect felt the "idea was to fashion a new exterior to create distinction and make more durable visually the basic character of the original thin-skinned wall system." He felt that "by furring the new wall system forward past the original column pilasters, deep window returns and sloping sills were at once created in the new, flush and sleek wall surface." His idea of the new profile is shown in the wall (see drawing).

This new profile involved moving the plane of the curtainwall forward away from the existing curtainwall, in line with the projecting pilaster-like covers at the columns. These column projections are architectural elements covering the building columns that do not project far away from the slab edges. The new facade puts the curtainwall gravity load forward at a large eccentricity from the existing curtainwall support system. A structural analysis indicated a new support system for the new profile was called for.

*Building after remodeling.  
See "before" on p. 37  
to note striking difference.*





Building under construction, showing trusses being erected.  
Wall section of remodel (l.) details construction.

(continued)

## STRUCTURAL FABRICATING MACHINERY

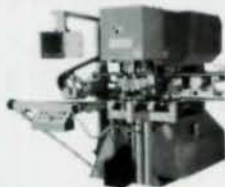
*State-of-the-Art Beamlines and Ironworkers, with conventional or CNC Controls for beams, angles, channels, flat bar and plate in many models to fill specific customer needs*

### TWIN-HEAD STRUCTURAL FABRICATION SYSTEM

with automatic feed. Capacities to 20" beams, 12" channels, 6 x 6 x 5/8" angles and 5/8" flat bar.

### MAP HIGH-SPEED CNC FLEXIBLE STRUCTURAL FABRICATOR

for shearing, punching and marking structural shapes. Several sizes available in capacities of 3" to 18" beams, 3" to 15" channels, 1 1/2 x 1 1/2 x 1/4" to 6 x 4 x 1/2" or 5 x 5 x 1/2" angles and flats up to 12 x 1/2".



PG DUPLICATOR

### PHA 600 CNC DRILL & PUNCH SYSTEM

with 2-axes or 4-axes CNC. Control for up to 24" beams, 15" channels and 6 x 6 x 5/8" angles.

### VP CNC ANGLE SYSTEM

in several sizes up to 8 x 8 x 3/4" angle, using a single-cut shear. Starting with a basic, modular configuration, the system can be designed to meet the requirements of the customer.

### FP 600 CNC 3-DRILL SYSTEM

A most economically priced system, with either 2-axes or 4-axes CNC Control. Capacities up to 24" beams, 15" channels, 6 x 6 x 5/8" angles.

### PG 110-TON CNC PLATE DUPLICATOR

with 110-ton hydraulic punching capacity, a "teach-mode" programmable controller, material positioning speeds up to 2000" per minute, accuracy of ± 1/64" and a maximum plate size of 40" x 40".

### GEKA HYDRAULIC IRONWORKERS

Angle capacities from 3 x 3 x 5/16" to 8 x 8 x 3/4" & Punching from 40 tons to 220 tons.



TWIN-HEAD SYSTEM

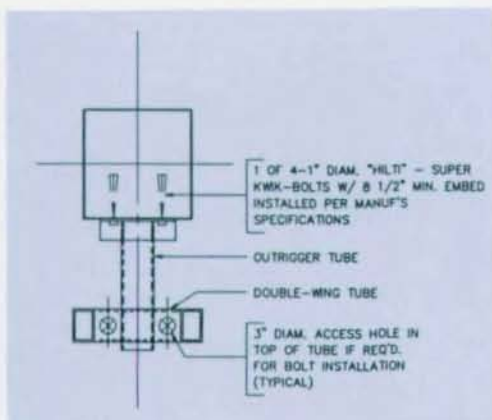


IRONWORKERS

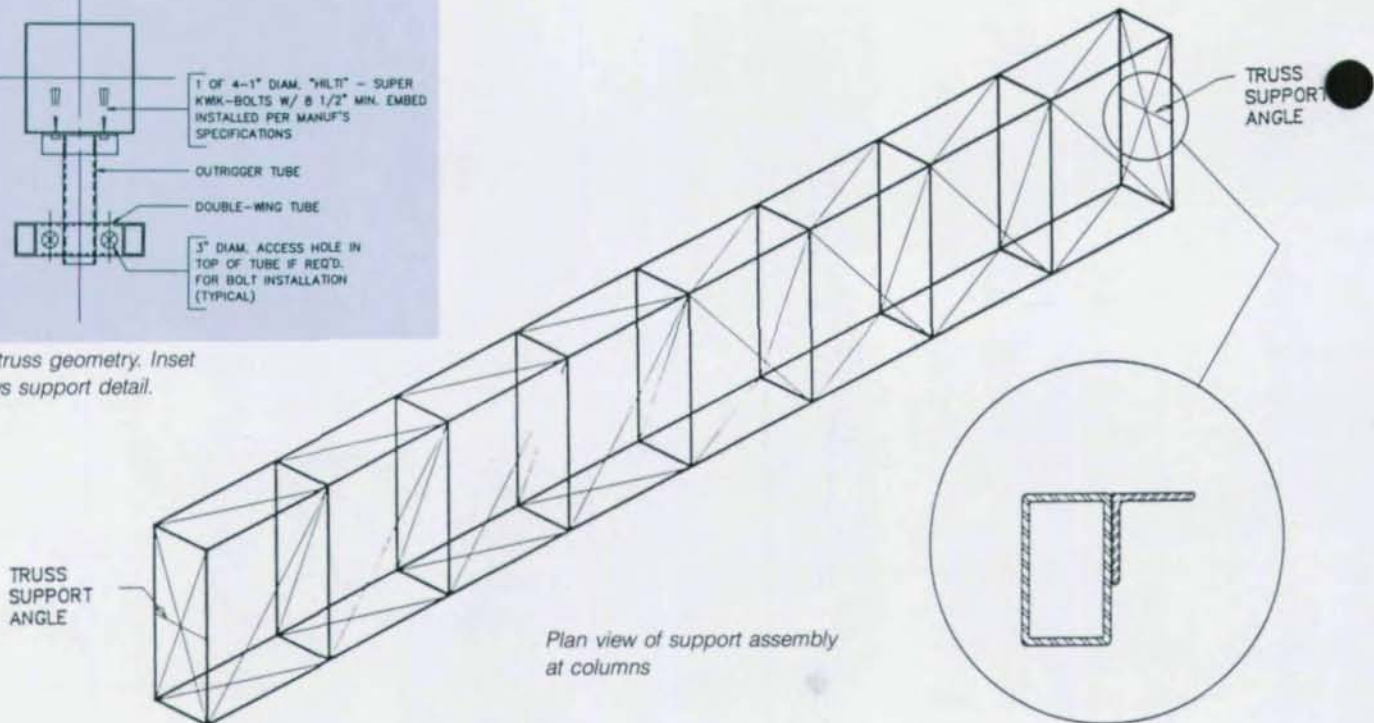
Distributor Inquiries Invited

# COMEQ, inc.

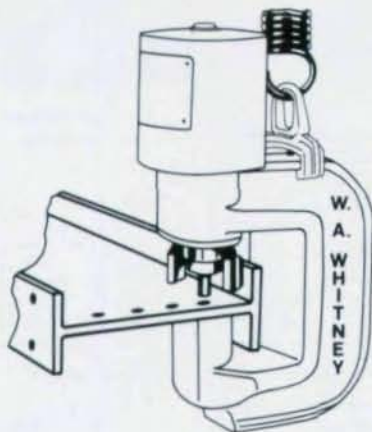
Box 2193 • Baltimore, MD 21203  
Phone: (301) 325-7900  
Fax: (301) 325-1025



Box truss geometry. Inset shows support detail.



## PORTABLE POWER with W.A. Whitney's Portable Presses



W.A. Whitney Corp.  
650 Race Street  
P.O. Box 1206  
Rockford, Illinois 61105-1206  
(815) 964-6771 Fax: (815) 964-3175

Punching is one of the least expensive ways of making holes in structurals. When using W.A. Whitney's Portable Presses, you save time and expense when punching wide flange beams, columns, channel iron, angle iron, I-beams, plate and other materials.

- Portable—Take press to work site
- Saves Time—Reduces material handling
- Powerful—Punches up to 3" diameter holes thru 1-3/8" thick material

W.A. Whitney offers portable presses with punching power from 20 tons through 150 tons. Talk to your W.A. Whitney distributor. Call or write today for our portable press catalog.

Here are some of the practical requirements:

1. The new support system should be one that could be mounted from the outside, so expensive tenant finish work need not be redone; also, tenants' businesses would not be disrupted.
2. The number of penetrations of the existing curtain wall should be kept to a minimum so as not to exacerbate the water penetration problem.
3. Since the floor structure was in post-tensioned concrete, any floor attachment devices should not damage the post-tension tendons.
4. Obviously, the new support system should be strong enough to resist both the vertical gravity loads and the horizontal wind loads and transfer these reactions to the building frame.

Several brainstorming sessions resulted in the final scheme. It was decided that welded box trusses (30 to 36 ft long, about 5 ft deep and 21 in. wide) nestled between the old and the new skin spanning between the column pilasters be erected and the new skin attached to it all from the outside. These trusses could be fabricated one piece per each bay and lifted in to thus reducing the field labor and avoiding extensive scaffolding. The contractor had



Building before extensive skin remodeling

a hoisting system that could climb vertically in any one bay at a time. This was used to lift the trusses to the required position. The trusses were mounted from the top floor down so those at the lower floors did not obstruct erection of those above.

Transferring the loads from these trusses to the building columns was accomplished thusly:

1. An outrigger assembly consisting of a  $6 \times 6 \times 6 \times \frac{3}{8}$  tube welded to two end angles at top and bottom was attached to the concrete column with expansion bolts. This outrigger assembly was installed through a small opening in the front cover of the column pilaster.
2. A structural tube of size  $6 \times 4 \times \frac{3}{8}$  was horizontally inserted from the openings in the side covers and bolted on top of the outrigger  $6 \times 6 \times \frac{3}{8}$  tube at right angles to it, forming a "double-wing" support system for trusses from each end.

The ends of this tube projected past the pilaster covers and were mitered so the truss could be "dropped in" and the support angle seated and levelled.

Costly removal of the pilaster covers was thus eliminated because the box trusses could be hoisted and erected between, but clear of, the pilasters.

3. The truss support was kept near the top of the truss, to assure stability during truss erection and to prevent top roll.
4. The lateral loads from the truss were transferred to the existing curtain wall support system at selected points and to the columns with suitable connections.
5. Because the trusses were erected one bay at a time, the gravity load was transferred at only one end of the double-wing. This one-sided load induced torsion in the column outriggers. This torque and the consequent twist were

IT IS FUN TO  
**DESIGN STEEL CONNECTIONS**

USING

**DESCON**

AN EASY TO USE SOFTWARE PACKAGE FOR YOUR PC

25 TYPES OF BEAM TO COLUMN CONNECTIONS, BEAM SPLICES AND BEAM TO GIRDER CONNECTIONS

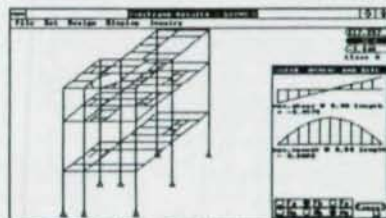
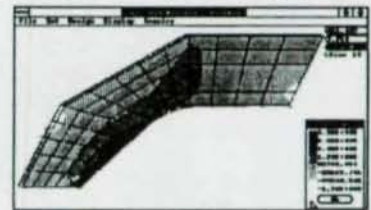
MOMENT CONNECTIONS  
SHEAR CONNECTIONS  
BOLTED AND WELDED

EXTENSIVE DATA BASE OF SHAPES, MATERIAL PROPERTIES AND SPECIFICATION REQUIREMENTS INCLUDED

FOR INFORMATION CALL OR WRITE TO:

OMNITECH ASSOCIATES  
P.O. BOX 7581  
BERKELEY, CA 94707  
(415) 528-8328

**INERTIA**<sup>®</sup>  
Integrated Engineering System



- Graphical Modeling
- Finite Element Analysis & Design
- Heat Transfer (Thermal)
- Mechanical Analysis (Mechanism)
- Structural Design (AISC)
- Spring Design (ASME)
- Available on all PCs and Macs

**MCAE, Inc.**

Tel 1-800-444-6223 Fax 1-317-463-7166

# M-STRUDL

The Best Selling  
Civil/Structural Program  
Since 1987

## ANALYSIS

- 2D/3D Frame / Truss / Plate / Shell
- Static / P-Delta / Dynamic / RSA Analysis
- Capable of 1000's of joints and 100's of load cases
- Interactive geometry, deflection, mode shape, plots
- Interactive shear and moment diagram plots
- AISC Library included

## DESIGN

- Interactive graphic menu driven design
- Continuous beam, section properties, frequency calculations
- AISC code check and sizing
- ACI column, beam, footing design
- Design details can be output to AUTOCAD
- Excellent in report presentations

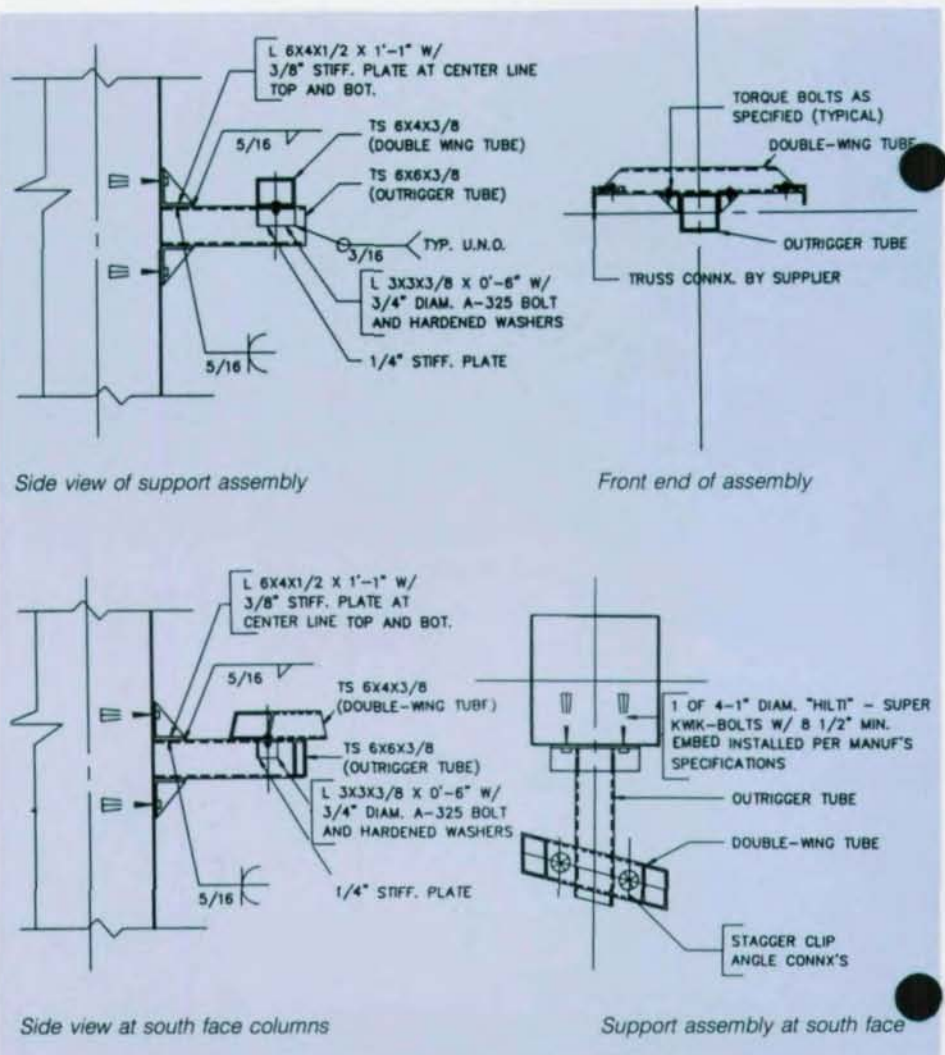
## GUARANTEE

M-STRUDL is superior in productivity and power. It has extremely flexible input/output options and supports most PC/XT/AT/PS2 hardware.

**"JOIN THE WINNING TEAM"**  
Ask for a brochure today!



P.O. Box 7326  
Fremont, CA 94536-7326  
(415) 795-0509



Side view at south face columns

Support assembly at south face

considered and designed for in the selection of the member sizes and the expansion bolts.

- At the south face of the building, where the edge of the building is at an angle, similar details were adapted as shown in the plan view and side view.

The success of this project depended on the easy and economical truss erection. Welded design of the trusses permitted the use of small and thin members, thus keeping the truss weight down. Bolted connections could have involved larger member sizes to achieve the proper edge and end distances for the bolt holes; even possibly gusseted connections could have resulted, further increasing the truss weight. Welding also contributed to the substantial stiffness of the truss system, eliminating any significant distortion during erection and preventing the "oil-canning effect" on the new exterior metal skin. Welded outrigger assembly proved torsionally stiff when truss loads were unsymmetric, the load occurring on only one end of the double-wing tube. □

### Architect

Frank Welch & Associates  
Dallas, Texas

### Structural Engineers

Brockette/Davis/Drake, Inc., and  
Mullen & Powell TechniStructures  
Dallas, Texas

### General Contractor

Spring Valley Construction Company  
Dallas, Texas

### Owner

Freedom Development Corp.  
Dallas, Texas

*K. S. Rajagopalan is a principal in the firm of Mullen & Powell-TechniStructures, consulting engineers, in Dallas, Texas, and also Adjunct professor of Civil Engineering, SMU, Dallas, Texas.*

*Robert G. Williams is vice president, Brockette/Davis/Drake, Inc., consulting engineers, Dallas, Texas.*

## MSC ADVERTISERS

American Computers & Engineers . . .	5
Archsoft . . . . .	17
ASC Pacific . . . . .	22
N.J. Bouras . . . . .	2
Bristol Machine Co. . . . .	29
Cast, Inc. . . . .	38
Comeq . . . . .	35
DCA Engineering . . . . .	33
Design Data . . . . .	14
Enercalc Eng. Software . . . . .	11
Epic Metals . . . . .	39
Jobber Instrument . . . . .	8
LeJeune Bolt Co. . . . .	32
Lincoln Electric . . . . .	7
Lukens Steel . . . . .	27
MCAE . . . . .	37
National Metal Abrasives . . . . .	31
Omnitech Associates . . . . .	37
Research Engineers . . . . .	26
RISA . . . . .	16
Smith-Emery Co. . . . .	30
Steel Deck Institute . . . . .	25
St. Louis Screw & Bolt . . . . .	10
Structural Analysis . . . . .	12
Structural Software . . . . .	3
TradeARBED . . . . .	3
Vulcraft . . . . .	20, 21
Walker Manufacturing . . . . .	19
W.A. Whitney . . . . .	36

# EPIC LONG-SPAN DECKS

E750—SPANS TO 32 FT.  
E600—SPANS TO 26 FT.  
E450—SPANS TO 23 FT.  
E300—SPANS TO 15 FT.

**AVAILABLE FOR DELIVERY—NOW**

Galvanized G60-G90  
Lengths to 50 ft.

Plated Decks—Plain or perforated  
Most complete line of deck products  
in  $\frac{5}{8}$ " to  $7\frac{1}{2}$ " depths

## OUR SERVICE WILL SAVE YOU TIME & MONEY

Epic has these profiles available for shipment on an A.S.A.P. Basis!

Your order will be processed in One Week in most cases. Ask about our A.S.A.P. Service.

Call (412) 351-3913 today for price and delivery information and for product advice on all types of Form Decks, Composite Decks, Long-Span and Roof Decks.

### Manufacturing Plants:

- Pittsburgh, Pa.
- Chicago, Ill.
- Lakeland, Fla.

*Dealer Inquiries Invited*

**EPIC**<sup>®</sup>  
METALS CORPORATION

Eleven Talbot Avenue, Rankin, PA 15104  
PHONE: 412/351-3913  
TWX: 710-664-4424  
EPICMETAL BRDK

# AISC INTRODUCES THE 9<sup>TH</sup> EDITION

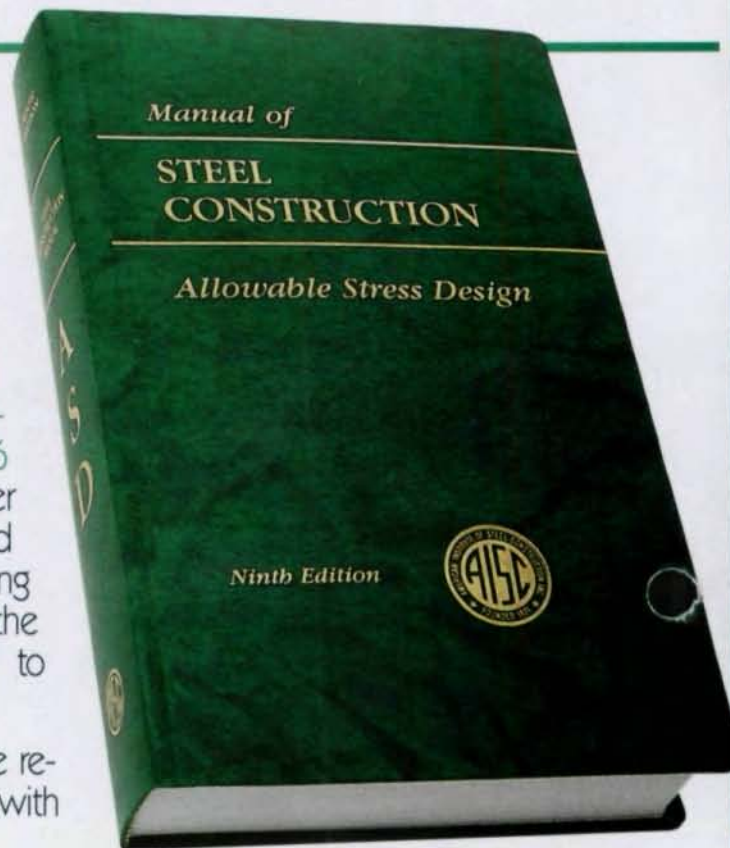
## ALLOWABLE STRESS DESIGN MANUAL OF STEEL CONSTRUCTION

FIRST REVISION SINCE 1980

**S**teady progress and improvements in the manufacture, design and fabrication of structural steel over the past nine years have made it necessary for AISC to revise the **Manual of Steel Construction**.

The 9th Edition is a major modification that includes the 1989 Specification for Structural Steel Buildings—Allowable Stress Design and Plastic Design; the 1985 Bolt Specification and the 1986 revised Code of Standard Practice. The number of design aids and examples has been expanded and updated. New easier-to-use tables, including Uniform Load Tables, improve the usability of the Manual, and tabular copy has been changed to reflect new materials.

All chapters have been modified to include results from nine years of research and development with extensive changes in rules governing connections.



PRICE: \$60.00. AVAILABLE JULY, 1989

### NEW • CHANGES

- TABLES
- DIMENSIONS
- BEAMS
- COLUMNS
- CONNECTIONS
- CODES & SPECIFICATIONS



**A MUST FOR STEEL  
CONSTRUCTION!**

#### AMERICAN INSTITUTE OF STEEL CONSTRUCTION

P.O. BOX 806276, CHICAGO, IL 60680-4124

Member Discount 25%

I enclose payment of \$ \_\_\_\_\_ for \_\_\_\_\_ copies of the  
9th Edition AISC **Manual of Steel Construction** at \$60.00 each.

NAME/TITLE \_\_\_\_\_

COMPANY \_\_\_\_\_

ADDRESS \_\_\_\_\_

CITY/STATE/ZIP \_\_\_\_\_

Please enclose remittance. No C.O.D. orders. In New York, California, and Illinois add sales tax. Shipping charges prepaid in U.S. On shipments outside the U.S., add 10% of total purchase for postage and handling.

Charge My  Visa  MasterCard

Card No. \_\_\_\_\_ Exp. \_\_\_\_\_

Signature \_\_\_\_\_