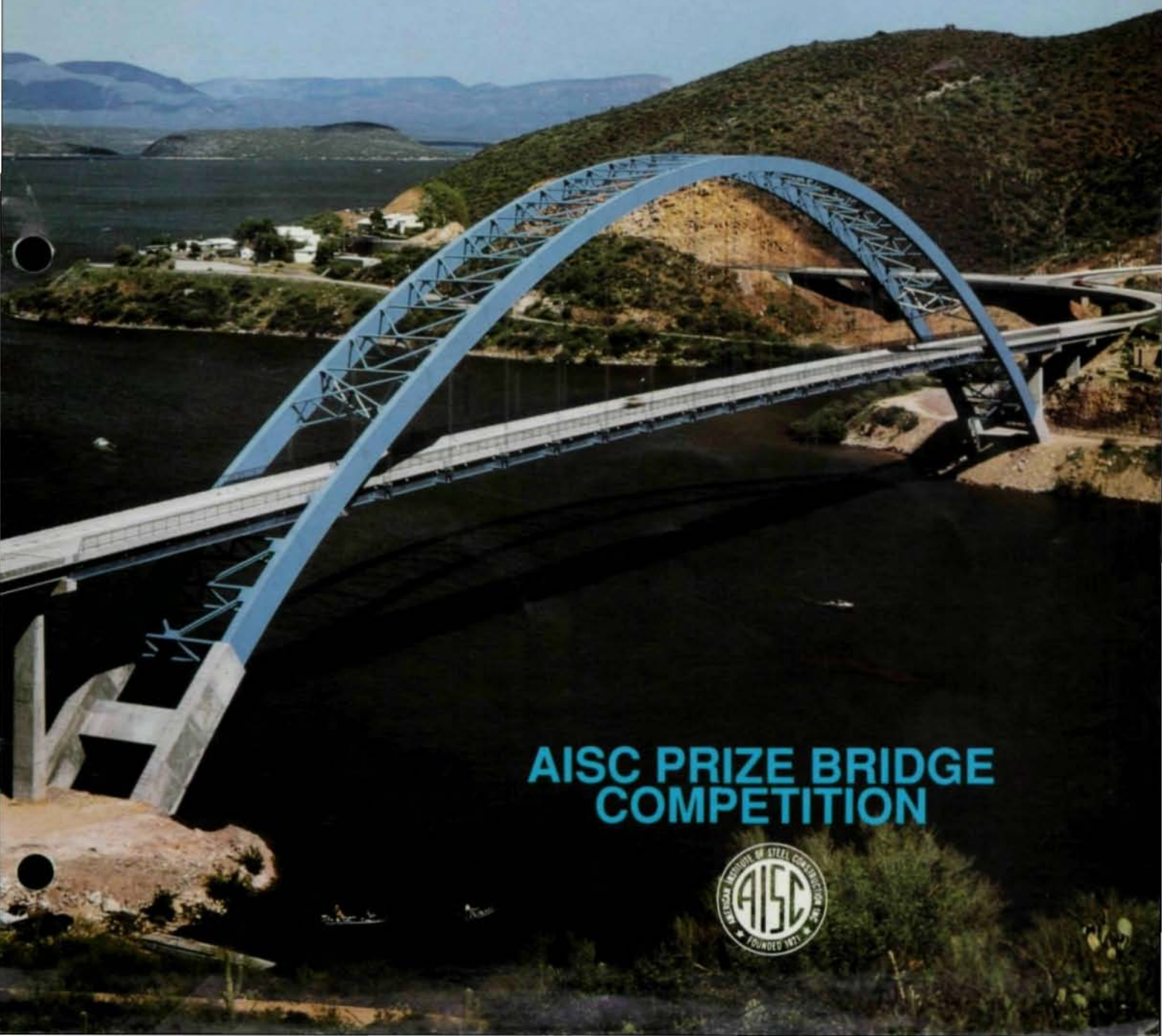


MODERN STEEL CONSTRUCTION

September 1991

\$3.00

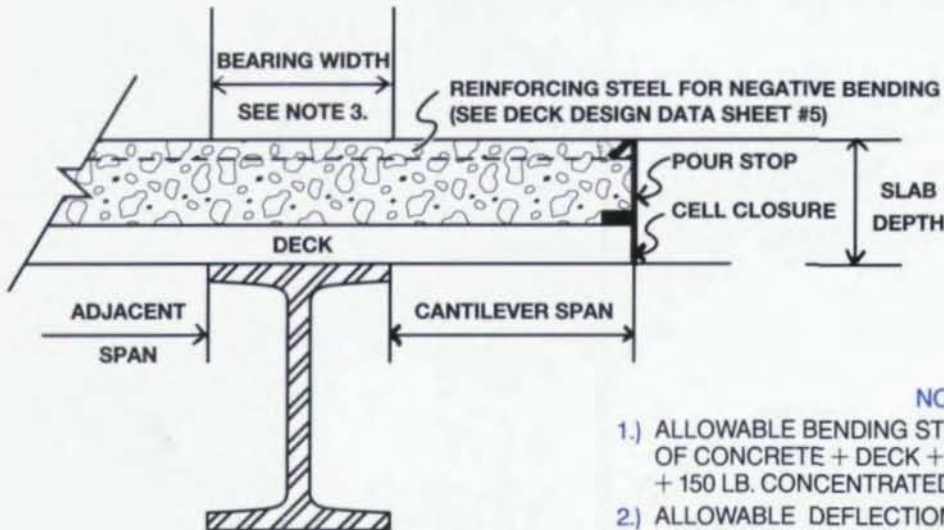


**AISC PRIZE BRIDGE
COMPETITION**



MAXIMUM FLOOR DECK CANTILEVERS

FOR UNITED STEEL DECK, INC.



NOTES:

- 1.) ALLOWABLE BENDING STRESS OF 20 KSI WITH LOADING OF CONCRETE + DECK + 20 PSF OR CONCRETE + DECK + 150 LB. CONCENTRATED LOAD, WHICHEVER IS WORSE.
- 2.) ALLOWABLE DEFLECTION OF FREE EDGE (BASED ON FIXED END CANTILEVER) OF 1/120 OF CANTILEVER SPAN UNDER LOADING OF CONCRETE + DECK.
- 3.) BEARING WIDTH OF 3/2" ASSUMED FOR WEB CRIPPLING CHECK — CONCRETE + DECK + 20 PSF OVER CANTILEVER AND ADJACENT SPAN: IF WIDTH IS LESS THAN 3/2"; CHECK WITH SUMMIT, NEW JERSEY OFFICE.
- 4.) CALL NICHOLAS J. BOURAS, INC. ANYTIME YOU NEED DECK INFORMATION.

FLOOR DECK CANTILEVERS

NORMAL WEIGHT CONCRETE (150 PCF)

Slab Depth	UNITED STEEL DECK, INC. DECK PROFILE															
	1.5 IN B-LOK				1.5 IN LOK-FLOOR				2.0 IN LOK-FLOOR				3.0 IN LOK-FLOOR			
	22	20	18	16	22	20	18	16	22	20	18	16	22	20	18	16
4.00"	1' 11"	2' 3"	2' 10"	3' 4"	1' 11"	2' 4"	3' 0"	3' 6"								
4.50"	1' 10"	2' 2"	2' 9"	3' 3"	1' 10"	2' 3"	2' 10"	3' 4"	2' 6"	2' 11"	3' 8"	4' 3"				
5.00"	1' 10"	2' 2"	2' 8"	3' 2"	1' 10"	2' 3"	2' 9"	3' 3"	2' 5"	2' 10"	3' 6"	4' 1"	3' 8"	4' 3"	5' 3"	6' 0"
5.50"	1' 9"	2' 1"	2' 7"	3' 0"	1' 9"	2' 2"	2' 9"	3' 2"	2' 4"	2' 9"	3' 5"	4' 0"	3' 7"	4' 1"	5' 0"	5' 9"
6.00"	1' 9"	2' 0"	2' 6"	2' 11"	1' 9"	2' 1"	2' 8"	3' 1"	2' 3"	2' 8"	3' 4"	3' 10"	3' 5"	3' 11"	4' 10"	5' 7"
6.50"	1' 8"	2' 0"	2' 6"	2' 11"	1' 9"	2' 1"	2' 7"	3' 0"	2' 3"	2' 8"	3' 3"	3' 9"	3' 4"	3' 10"	4' 8"	5' 5"
7.00"	1' 8"	1' 11"	2' 5"	2' 10"	1' 8"	2' 0"	2' 6"	2' 11"	2' 2"	2' 7"	3' 2"	3' 8"	3' 3"	3' 9"	4' 6"	5' 3"
7.50"	1' 8"	1' 11"	2' 4"	2' 9"	1' 8"	2' 0"	2' 6"	2' 10"	2' 2"	2' 6"	3' 1"	3' 7"	3' 2"	3' 8"	4' 5"	5' 1"
8.00"	1' 7"	1' 11"	2' 4"	2' 8"	1' 7"	1' 11"	2' 5"	2' 10"	2' 1"	2' 5"	3' 0"	3' 6"	3' 1"	3' 6"	4' 3"	4' 11"



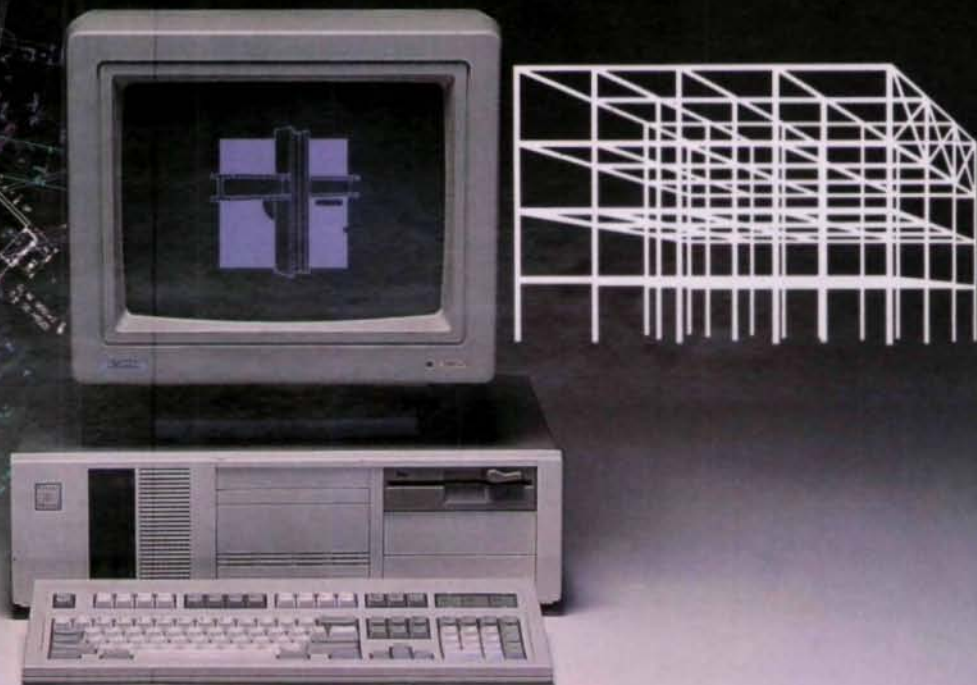
NICHOLAS J. BOURAS, INC.

P.O. BOX 662, 475 SPRINGFIELD AVE.
SUMMIT, NEW JERSEY 07902-0662 (908) 277-1617



ASSOCIATE MEMBER

BUY YOURSELF TIME



SPEED AND ACCURACY DOWN TO THE LAST DETAIL.

FabriCAD II from Structural Software. For faster, more accurate detailing, draw on FabriCAD II. It's the detailing program that reflects the actual problems you face in every job — and solves them.

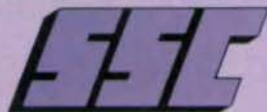
Entering information is simple, because input follows the erection plan. Based on the E-plan, FabriCAD II not only accurately completes details, it allows for a wide variety of shop and field connections. It also generates anchor bolt plans, E-plans, bracing details and elevation views. And because all dimensions and connections can be easily edited, change orders are a breeze.

Features like these mean the end of long waits for shop drawings. With FabriCAD II, you can complete two or three times as many sheets per day using the same personnel. And because all our programs are designed for IBM computers and compatibles, no special training is necessary.

Call or write today for more information on FabriCAD II and other Structural Software programs, including:

- Estimating — Generates more accurate estimates for higher profit margins.
- Inventory Control, Production Control and Purchase Orders — Material Allocation programs that link purchasing with production to cut waste and boost profits.

*We are an authorized reseller
of Novell NetWare and Everex
computers.* Structural Software
Company, 5012 Plantation
Road, P.O. Box 19220, Roanoke,
VA 24019, (800) 776-9118

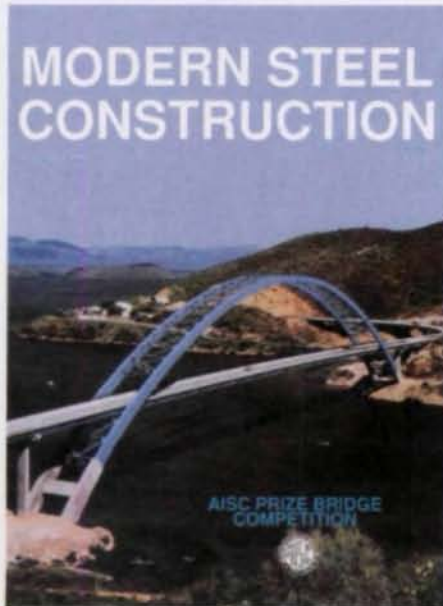


STRUCTURAL SOFTWARE CO.
SOFTWARE FOR THE STEEL INDUSTRY

MODERN STEEL CONSTRUCTION

Volume 31, Number 9

September 1991



The Roosevelt Lake Bridge, designed by Howard Needles Tammen & Bergendoff, won a 1991 Prize Bridge Award in the Long Span Category. The story behind the 17 winners in the AISC Prize Bridge Competition begins on page 13.

Modern Steel Construction. Published monthly by the American Institute of Steel Construction, Inc. (AISC).

Executive, editorial, circulation office: One East Wacker Dr., Suite 3100, Chicago, IL 60601-2001. Advertising office: Pattis/3M, 7161 North Cicero, Lincolnwood, IL 60646.

Subscription price:
Within the U.S.—single issues \$3; 1 year \$30; 3 years \$85.
Outside the U.S.—single issues \$5; 1 year \$36; 3 years \$100.

Postmaster: Please send address changes to Modern Steel Construction, One East Wacker Dr., Suite 3100, Chicago, IL 60601-2001.

Application to mail at second-class postage rates is pending at Chicago, IL (and at additional mailing offices).

FEATURES

- 15 ROOSEVELT LAKE BRIDGE
- 18 RAMP B — TURKEY LAKE ROAD OVER I-4
- 20 RAMP X ROADWAY & RAMP R ROADWAY
- 22 SOUTHERN BOULEVARD ROUTE 9W OVER NORMANSKILL
- 24 MCCARRAN BOULEVARD BRIDGE
- 26 SUSQUEHANNA STREET BRIDGE
- 30 ST. PETER STREET BRIDGE
- 35 SNELLING & MARSHALL RAILROAD BRIDGE
- 38 SR-386/I-65, CSX RAILROAD, TWO-MILE PIKE
- 40 I-10/I-17 INTERCHANGE
- 42 BRIDGE "B" OVER MCO ENTRANCE ROAD
- 44 US10 OVER ST. CROIX RIVER
- 46 GREENPOINT AVENUE BRIDGE
- 50 THE LINK
- 52 GENEVA SPUR PEDESTRIAN BRIDGE
- 54 PADUCAH TIED ARCHES
- 56 MARTIN LUTHER KING BRIDGE

NEWS AND DEPARTMENTS

- 6 EDITORIAL
- 60 METAL DECK PRODUCTS
- 11 RESEARCH COUNCIL OF STRUCTURAL FASTENERS
- 62 AD INDEX



HISTAR[®]

**A new generation
of rolled beams
and column shapes
for economical
steel construction.**

Once again, ARBED leads the industry by featuring a trendsetting combination of mechanical, chemical and technological properties:

- HIGH YIELD STRENGTHS (up to 65 KSI) - even for ultra-heavy sections.
- OUTSTANDING TOUGHNESS PROPERTIES.
- EXTREMELY LOW CARBON EQUIVALENT — ensures excellent weldability.

A NEW PROCESS... QST.

The secret is in ARBED's revolutionary new in-line QST process.

OTHER RECENT ARBED INNOVATIONS:

ARBED-ROLLED 40", 44", and "TAILOR-MADE" (WTM) series — famous for high section moduli, great lateral buckling resistance, and big savings in fabrication costs and weights. These products are also available in the new HISTAR quality as is our standard WF series and H BEARING PILES.

NEW LITERATURE AVAILABLE

Send now for complete data on all these ARBED products, contact Trade ARBED, INC., 825 Third Ave., New York, NY 10022. (212) 486-9890, FAX 212-355-2159/2421. In Canada: TradeARBED Canada, Inc., 3340 Mainway, Burlington, Ontario, Canada L7M 1A7. (416) 335-5710, FAX 416-335-1292.

TRADE ARBED Inc.

INNOVATORS OF STEEL CONSTRUCTION PRODUCTS.

Editorial Staff

Scott Melnick,
Editor
Patrick M. Newman, P.E.,
Senior Technical Advisor
Cynthia J. Zahn,
Senior Technical Advisor

Editorial Offices

Modern Steel Construction
One East Wacker Dr.
Suite 3100
Chicago, IL 60601-2001
(312) 670-5407

Advertising Sales

Eric K. Nieman, Pattis-3M
Ed Sreniawski, Pattis-3M
7161 North Cicero
Lincolnwood, IL 60646
(708) 679-1100
FAX (708) 679-5926

AISC Officers

Ralph H. Clabour,
Chairman
Stephen E. Egger,
First Vice Chairman
Frank B. Wylie III,
Second Vice Chairman
Oscar W. Stewart, Jr.,
Treasurer
Neil W. Zundel,
President
David Ratterman,
Secretary & General Counsel
Lewis Brunner,
Vice President,
Membership Services
Geerhard Haaijer,
Vice President,
Technology & Research
Morris Caminer,
Vice President,
Finance/Administration

False Initiative

A friend was recently raving to me about some of the beautiful old covered bridges she had seen on a recent trip to the East Coast. But why aren't there any new wooden bridges, she wanted to know?

In a nutshell, I answered, they are more expensive than other types of bridges, have more maintenance problems, and may be an environmental hazard.

While specific figures will vary from state to state, it is not uncommon for timber bridges to cost as much as \$10/sq. ft. more than comparable steel bridges. And information from the National Bridge Inventory (NBI) shows that timber bridges have the highest percentage of structural deficiency among inventoried bridges.

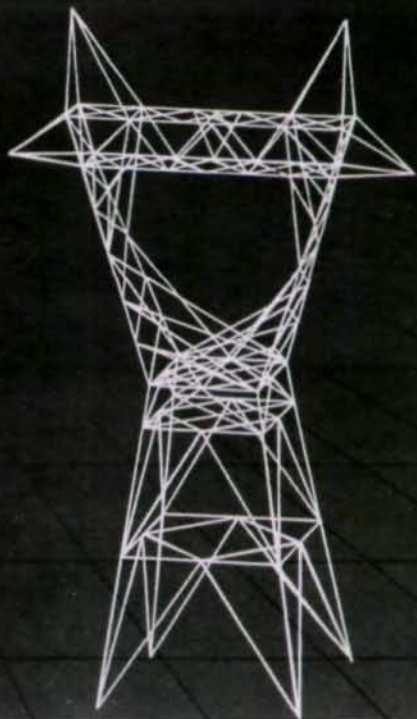
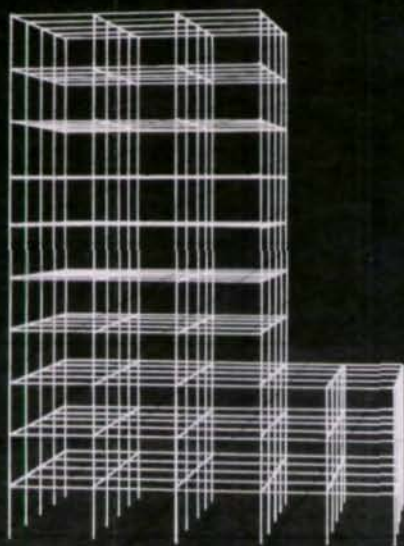
In addition, the Environmental Protection Agency has determined that coal tar/creosote formations in the wood preservatives used in timber bridges are a risk to human health and that coal tar products are moderately to highly toxic to fish and other aquatic life. And these preservatives are exuded from treated wood for long periods.

While that answer made sense to her, it doesn't seem to satisfy the U.S. Congress. Intensive lobbying by the timber industry is resulting in a tilting of the playing field—at your and my expense. The Timber Bridge Initiative provides federal funds exclusively for timber construction.

In West Virginia, for example, highway officials have reported that several bridges now under construction are only being built from timber due to the availability of federal matching funds.

Some advocates of wood bridges claim they are promoting a "natural" material. But is wood any more natural than iron ore? And while wood is a renewable material, as I've discussed in previous months, steel is one of the few truly recyclable materials.

The true rationale for creating a federal pilot program for timber bridges is to help the timber industry develop the automated routines needed to compete more effectively. While nobody is saying they expect timber bridges to ever be more cost efficient than steel, congressmen from large timber states are hoping that this program will at least help to close the current huge gap. But given the tremendous infrastructure problems in this country, is this really the best use for millions of tax dollars? **SM**



STAAD-III/ISDS - Ranks #1 in America.

A recent ENR/McGraw Hill survey of the Architectural/Engineering/Construction industry has ranked STAAD-III/ISDS, from Research Engineers, as the #1 structural engineering software in the market today.

The choice of engineers since 1978, STAAD-III/ISDS is being used worldwide as an everyday companion in the design office. The first truly integrated structural engineering software, STAAD-III/ISDS combines geometric layout, analysis, design and drafting in a single software system.



Simple to use, yet sophisticated in application, STAAD-III/ISDS offers the most comprehensive solution to your structural engineering needs. Today, Research Engineers, with six offices in four continents, is setting the structural engineering standard worldwide.

STAAD-III/ISDS - #1 For a Reason.



*Research
Engineers, Inc.*

A reputation you can build on.

For Information Call: 1-800-FOR-RESE
1-800-367-7373

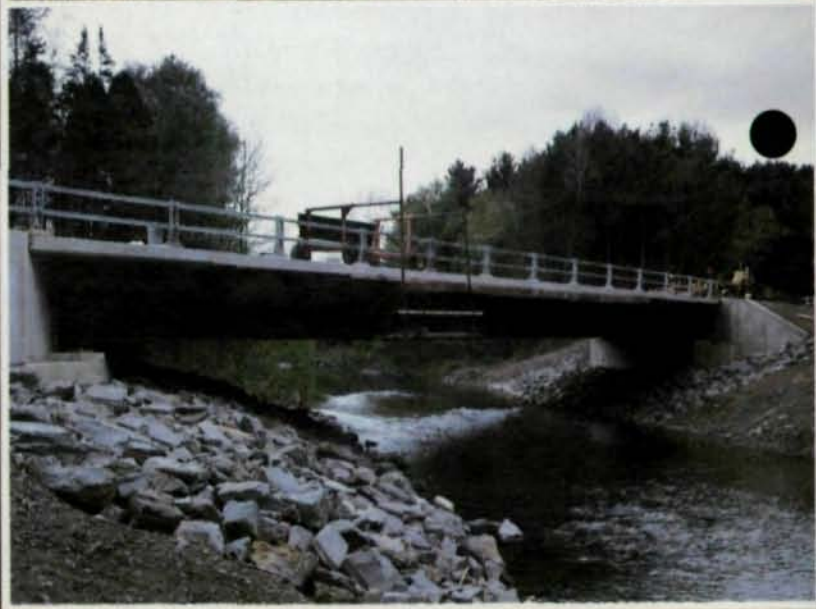
1570 N. Batavia St, Orange, CA 92667
Phone: (714) 974-2500 Fax: (714) 974-4771

RESEARCH ENGINEERS WORLDWIDE:

UK: Research Engineers (Europe) Ltd., 19 Lansdowne Court, Brighton Road, Purley Surrey CR8 2BD Phone: (081) 763-1393 Fax: (081) 763-1379 Telex: 929181
France: Research Engineers, 18 rue de Moresville, 28800 FLACEY Phone: 37.47.51.63 Fax: 37.47.44.63

W. Germany: Research Engineers, Wilhelm-Busch-Str.23, 6140 BENSHEIM 3 AUERBACH Phone: 06251/79577 Fax: 06251/75437
India: Research Engineers Pvt. Ltd, 40 B Darga Road, Calcutta 700 017 Phone: 448914 Telex: 214102

Steel Wins Short-Span



New York State DOT Finds Steel an Economical Solution for Many of Its Short-Span Bridges

The New York State DOT believes in letting each bridge material compete on its own merits. They like to let the marketplace decide which material is most suitable for a particular project when the material choice is not always evident.

That was the situation with the four bridges shown here. In each case, steel competed directly with concrete — and in each case, steel earned the bid.

But it wasn't necessarily the cost of the superstructure alone that made the difference. The DOT prepared complete and independent steel and concrete alternate designs, including foundations. When overall construction costs were compared, steel was found to offer distinct weightsaving advantages that concrete couldn't match . . . like less costly piers

n Bridge Competition



and foundations along with the option to use lighter erection equipment. All of the contractors agreed that consideration of the total construction package resulted in the steel alternatives being the low bid.

The use of high-strength weathering steel on each of the bridges also provided benefits in terms of attractive, cost-effective sections compared to conventional steel girders. And because both initial and future maintenance painting are eliminated, savings accrue immediately as well as down the road.

If you haven't considered structural steel for your current or next short-span bridge project, don't you think it's time to give it a try? You may be surprised to find out just how economical steel can be.

We will be happy to send you a report on the four economical steel short-span bridge projects shown above. Just write: American Iron and Steel Institute, 1133 15th Street, N.W., Washington, DC 20005.

Credits:

State Route 7 bridge over Delaware and Hudson Railway, Duanesburg, NY
General Contractor: Schultz Construction Co., Round Lake, NY

Bridge over Page Brook, Chenango Valley State Park, NY
General Contractor: Harrison and Burrows Bridge Constructors, Inc., Glenmont, NY

Route 15 bridges over Mc Clure Creek and Beardsley Creek near Catherine, NY
General Contractor: A.L. Blades Co., Hornell, NY



LIMITED TIME OFFER

4 FREE
DESIGN GUIDES
FROM AISC...

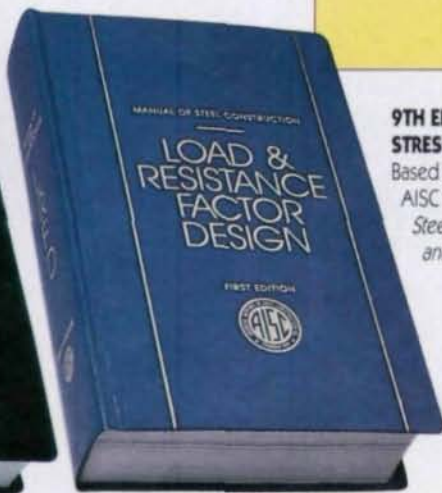
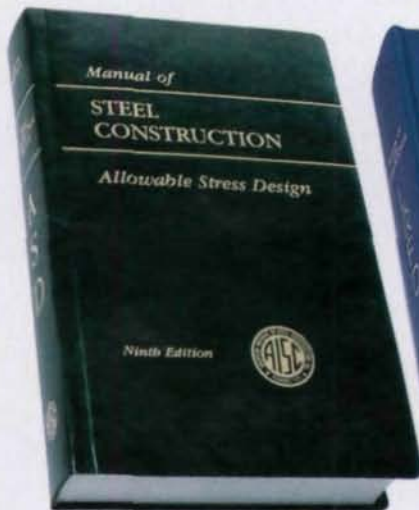
...WITH PURCHASE OF
ASD OR LRFD
MANUALS BEFORE
OCT. 15TH

AISC Manuals of Steel Construction are essential for anyone involved in the design, fabrication and manufacture of steel structures. Two alternative methods—Allowable Stress Design or Load Resistance Factor Design—give you complete text and diagrammatic reference for every phase of steel construction.

Both ASD and LRFD Manuals include:

- | | |
|------------------------------|--|
| 1. Dimensions and Properties | 4. Connections |
| 2. Beam and Girder Design | 5. Specifications and codes |
| 3. Column Design | 6. Miscellaneous Data and Mathematical Tables. |

PLUS...1985 Bolt Specifications, 1986 Code of Standard Practice, comprehensive index, and thumb-indexing presentation.



AISC's Design Guide Series takes you in-depth on specific design, fabrication and construction topics in an easy-to-read format.

- 1. COLUMN BASE PLATES**
Provides engineers with the research background and behavior of base plates and presents information and guidelines for their design. 51 pages.
- 2. WEB OPENINGS**
Summarizes design concepts for the practicing engineer and reviews the research and history of web openings. This guide also presents a unified design approach to both steel and composite beams with web openings, including reinforcement requirements. 63 pages.
- 3. SERVICEABILITY FOR LOW RISE BUILDINGS**
Numerous serviceability design criteria exist, but they are spread throughout many different sources and documents. Design Guide #3 gathers these criteria together for a discussion on serviceability, including detailed requirements of deflection, vibrations and drift. 21 pages.
- 4. EXTENDED END-PLATE MOMENT CONNECTIONS**
Design, fabrication and erection of this type of connection. The Guide gives recommendations and background for four-bolt as well as eight-bolt end-plate connections. 43 pages.

REGULAR DESIGN GUIDE PRICE—\$16.00 EACH

YOU SAVE \$64.00!

9TH EDITION ALLOWABLE STRESS DESIGN (ASD)

Based on the provisions of the 1989 AISC Specifications for Structural Steel Buildings—Allowable Stress and Plastic Design. 1100 pages.

1ST EDITION LOAD AND RESISTANCE FACTOR DESIGN (LRFD)

Based on the 1986 Load and Resistance Factor Design Specification for Structural Steel Buildings, LRFD provides more uniform structural reliability and better economy than ASD specifications. Design aids are updated in the LRFD format. Includes a special section for composite beams and columns fabrication. 1124 pages.

YOUR CHOICE
\$60.00 EACH

To get your free Design Guides with your ASD or LRFD order,
RETURN THE ORDER INSERT CARD IN THIS ISSUE
NO LATER THAN OCTOBER 15, 1991 TO:

AISC Manual Offer, PO Box 806276, Chicago, IL 60680-4124



Research Council On Structural Connection Education Committee

Recommendations For Purchasing, Receiving And Storing A325 and A490 Bolts

The steel fabricator normally bears cost of the high strength fasteners on a project. "Purchase price" and "Delivery" are the main criteria used in purchasing; however, purchase price is the true measure of cost to the fabricator only if the bolt manufacturers and vendors can be counted upon to fully comply with the purchase specifications. Unfortunately with some manufacturers and vendors, knowledge and attention to specification requirements, proper manufacturing and testing procedures and quality control have been neglected disregarded to meet tough competition.

Therefore, carefully prepared purchase orders which clearly and completely specify requirements for manufacture, testing, delivery and storing of high-strength bolts are essential to keep the fabricator's true costs under control while assuring proper fastener performance.

PURCHASING REQUIREMENTS

The purchase order for all ASTM A325 and A490 high-strength bolts must include the following:

- (1) The ASTM grade, A325 or A490.
- (2) The type, Type 1, 2 or 3.
- (3) A copy of the project specification for the manufacturer and vendor.
- (4) "Ordering information" as required by ASTM 1990, Volume 15.08 **Fasteners**, Pages 56 and 98.

EVIDENCE OF CONFORMITY

Additionally the purchase order should require:

- (1) The vendor to provide certification and the bolts, nuts and washers furnished conform to all requirements of the referenced ASTM specification.
- (2) That certified manufacturer's mill test reports be supplied which clearly show the applicable ASTM mechanical and chemical requirements together with the actual test results for the supplied fasteners.
- (3) That the bolt heads and the nuts of the supplied fasteners must be marked with the manufacturer's identification mark, the strength grade and type as specified by ASTM specifications.
- (4) That, for projects which require slip-critical

connections, the lubricated bolt, nut and washer be preassembled to assure proper fit of the bolt and nut and the assembly tested for strength to meet the requirements of Table 4, of the *Specification for Structural Joints Using ASTM A325 or A490 Bolts* prior to shipment to the purchaser.

RECEIPT AND VERIFICATION

For acceptance, assure the delivered fasteners comply with purchase requirements verify upon receipt:

- (1) That bolts and nut and marked as specified.
- (2) That manufacturer's mill test report reflect that the chemistry of the fasteners supplied comply with requirements for the type bolts and nuts specified.
- (3) That certification numbers appear on the product containers and correspond to the certification numbers on the mill test reports for the fastener.
- (4) That mill test reports are supplied to both the purchaser and the testing laboratory responsible for quality control.

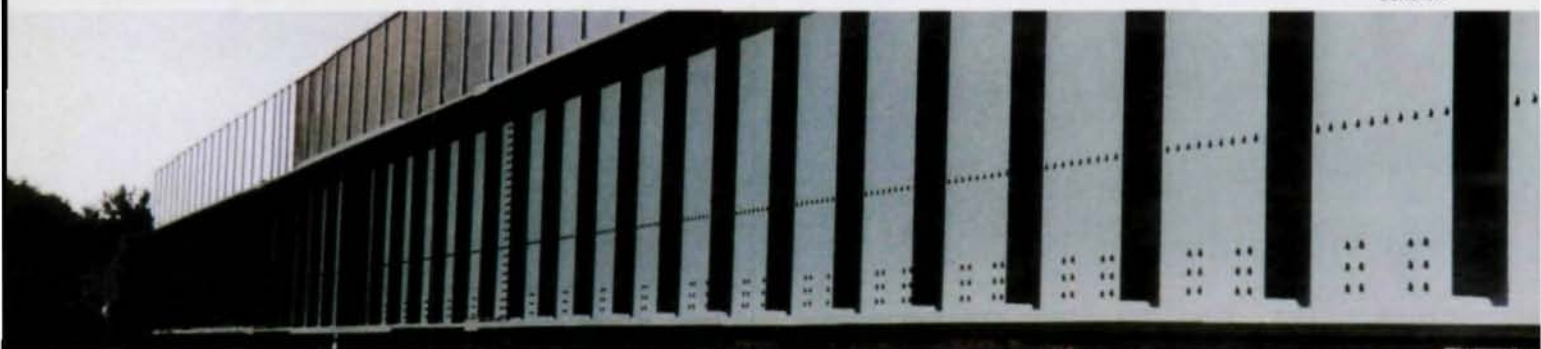
A representative of the fastener supplier should be present. The inspector shall be present and a tension measuring device shall be available in the shop and at the jobsite at the beginning of bolting start-up. Tests of representative samples of the fasteners received shall be conducted to confirm that the fastener assemblies, including lubrication if required, when tensioned by tightening the nut on the bolt, satisfy the installed tension requirements of Table 4.

STORAGE

All fastener components shall be stored in a manner that affords complete protection from moisture, heat and dirt contamination. These precautions are necessary to avoid corrosion, loss of effectiveness of the lubricant and dirt contamination which will increase the needed torque and preload scatter ranges. Each day, upon removal from storage, each bucket of fasteners will be visually inspected for corrosion, contamination with dirt and condition of the lubricant. Any fastener found to be corroded, dirty or lacking the coating of lubricant present when delivered to the job site will be deemed unacceptable for installation.



Concrete



Three-coat Paint System



Weathering Steel



Single-coat IC 531 Zinc Silicate

Ugly is Only Skin Deep

We have to agree. A single coat of gray IC 531 zinc silicate isn't exactly an eye catcher. But then isn't beauty in the eye of the beholder? If bridge maintenance is your headache, you will find that the real beauty of high-ratio IC 531 is below the surface — because IC 531 is a chemically bonded permanent steel treatment.

IC 531 isn't paint or just galvanic protection but rather a combination of high-ratio liquid glass and pure zinc that chemically bonds to the steel and seals off to become a permanent barrier to moisture, oxygen, deicing salts and ultra-violet

rays. Should an area become damaged, IC 531 is easily repaired with itself — inexpensively, without blasting and for as long as you care to preserve your steel.

All of the advantages of IC 531 zinc silicate add up to amazing short and long term economics and peace of mind that will make everything look beautiful . . . even single-coat IC 531.



Inorganic Coatings, Inc.

500 Lapp Road • Malvern, Pennsylvania 19355
215/640-2880 • 800/345-0531 (USA) • 800/522-0531 (PA)

See Us At Booth 807B

AISC Prize Bridge Competition

From more than 130 entries to the 1991 AISC Prize Bridge Competition, a jury of five bridge experts awarded eight Prize Bridge Awards and nine Awards of Merit.

The winners ranged from a small pedestrian walkway in a Chicago suburb to a 1,000'-long bridge over mountainous terrain near Phoenix to the renovation of a post-World War II bridge spanning the Mississippi River. Descriptions and photographs of all 17 winners are included in the pages that follow.

The members of this year's jury were:

- David Billington, P.E., Professor of Civil Engineering and Director of the Program in Architecture and Engineering, Princeton University, Princeton, NJ.
- Donald J. Flemming, P.E., Minnesota State Bridge Engineer, St. Paul, MN.
- Robert C. Flory, P.E., Chairman and C.E.O., Booker Associates, St. Louis, MO.
- Charles W. Roeder, Chairman, Steel Bridge Research Board of the National Research Council, Seattle, WA.
- Arun M. Shirole, P.E.,



Director of Structures & Deputy Chief Engineer of the New York Department of Transportation, Albany, NY.

Pictured, from left to right: David Billington, Arun M. Shirole, Robert Flory, Charles Roeder, and Donald Flemming.

The winning Prize Bridge designers will be honored at an awards banquet at the National Symposium on Steel Bridge Construction in St. Louis on September 16. (For more information on the symposium, contact: Lewis Brunner at (312) 670-5420 Fax: (312) 670-5403.)

The following AISC members fabricated a winning bridge: The Bratton Corp.; Standard Structural Steel; Stupp Bros. Bridge & Iron Co.; High Steel Structures; Carolina Steel Corp.; Harris Structural Steel; Munster Steel; Phoenix Steel; Pitt-DesMoines, Inc.; Sheffield Steel Products; and Vincennes Steel Corp.

The reasons fabricators call Chaparral are as strong as our steel.

Broad Product Line. Chaparral's beams, rounds, channels, flats and angles enable us to be your best source for one-stop shopping.

Availability—What you need when you need it. Chaparral offers innovative roll-and-hold programs to match your delivery requirements.

Knowledgeable Shipping/Central Location. Our centrally located mill allows us to ship with ease throughout North America. In fact, some of Chaparral's shipping innovations have become industry standards.

Sales Force—The strongest in the industry. Our sales teams are responsive to your needs. One phone call to any of our qualified professionals will take care of your complete order.

Price. We're competitive. Prices are quoted on a delivered basis. Give us a chance to meet or beat your current source. Just call us at 1 (800) 527-7979.



CHAPARRAL STEEL

Toll Free (800) 527-7979 In Texas (800) 442-6336
Local (214) 775-8241 Metro 299-5212 Telex 73-2406
300 Ward Road, Midlothian, Texas 76065-9651





AISC Prize Bridge Award:

Long Span

Roosevelt Lake Bridge, Roosevelt Lake, Arizona



When the Arizona Department of Transportation was considering the design for the Roosevelt Lake Bridge in the east central part of the state, they needed to consider more than just economics. The bridge spans more than 1,000' over one of the state's premier fishing spots located just a 125 mile drive from Phoenix, so of course aesthetics played a large role.

The challenge for the designers was to design a two-lane structure that would span more than 1,000', meet stability requirements and be economical. Two consultants prepared complete construction documents on three steel alternates and

one concrete design.

When bids were returned, the cable-stayed concrete design was quickly eliminated due to its high cost—approximately \$6 million more than the accepted steel bid. The winning bid, a steel box-rib arch, was selected not only because it was the low cost alternate, but because of the arch's inherent ability to adapt to the curved site alignment and its superior aerodynamic properties.

The twisting alignment of the bridge due to mountainous terrain made it difficult to get a tangent alignment long enough for alternate structure types, explained Gray C. Wangelin, P.E., structure



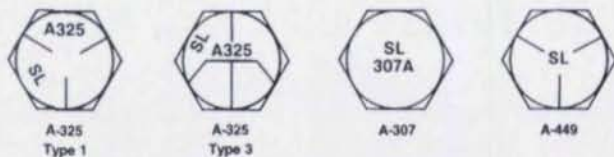
group manager in Howard Needles Tammen & Bergendoff's Phoenix office. The arch span, however, does not require straight approach spans.

The bridge consists of 42 major A572 steel arch rib sections. The arch rib was designed to minimize material through the length of the rib, and each steel arch rib is made up of two 4'-wide flanges with two web plates that vary from 8' at the crown to 14' at the baseplate. Plate thicknesses vary from 1-7/16" at the crown to 2" at the base connection.

To prevent buckling, the rib box sections are stiffened longitudinally and the webs of the box sections are stiffened internally by two tee sections welded to each web. The tee sections are made continuous through the rib field splices and participate fully in carrying the various loads.

Box rib sections were fabricated in lengths of 40' to 58' and weigh from 40 to 100 tons apiece. Fabrication and material costs were re-

THIS IS WHAT IT TAKES TO BE A BOLT MANUFACTURER IN THE 1990s:



Registered Head Markings on all structural and machine bolts
from 5/8" to 3" diameter, all lengths



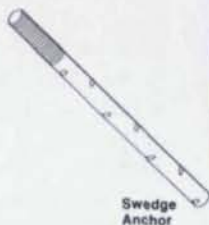
Countersunk



Bent anchor



Double & Single-
End Anchor



Swedge
Anchor

Special Products from 1/2" to 3" diameter

- U.S. made steel
- Wide-range manufacturing capabilities
- Weathering steel: CORTEN X
- Guaranteed full traceability
- In-house lab testing
- Certification

ST. LOUIS SCREW & BOLT COMPANY

6901 N. Broadway/St. Louis, MO 63147/(314) 389-7500



SINCE
1887



FAX, (314) 389-7510
Toll Free, 1-800-237-7059



duced by using closed steel box sections for the arch ribs rather than open steel sections.

The stability of the arch against wind loads and global buckling was achieved through a diagonal-bracing system fabricated from structural tubing and welded box sections. Vierendeel bracing also was considered, but the diagonal-bracing creates a much stiffer structure.

"The Vierendeel design would have allowed 24" of sidesway movement, while the diagonal-bracing allowed only 12" of sidesway movement from wind load," Wangelin said. Aerodynamic considerations were very important on this project due to the height of the arch, the narrow 50' rib spacing, and the high-velocity mountain winds.

Another advantage of diagonal bracing is that it required 200 less tons of steel than would the Vierendeel design.

Aesthetics also played a role in choosing a bracing system. "The

Vierendeel bracing was more massive, it looked like you were driving under a ladder. The way it is designed now creates a very light and airy look," Wangelin added. "The geometric shape of the arch was modified by increasing the arch curvature below the approach span level. This reduced the dead load bending stress on the arch rib from approach span loads. The resultant shape is defined by both second and fourth order curves that make the entire arch appear smooth and continuous."

In fact, the design was so successful that the *Phoenix Republic* recently described it as the state's most spectacular bridge.

Two design elements directly reduced bridge and lifecycle costs. First, closed steel sections were used in the arch ribs and bracing system to minimize corrosion caused by entrapped water and debris. And second, access holes in the arch rib internal diaphragms were created to permit inspection of the length of the arch. □

Roosevelt Lake Bridge

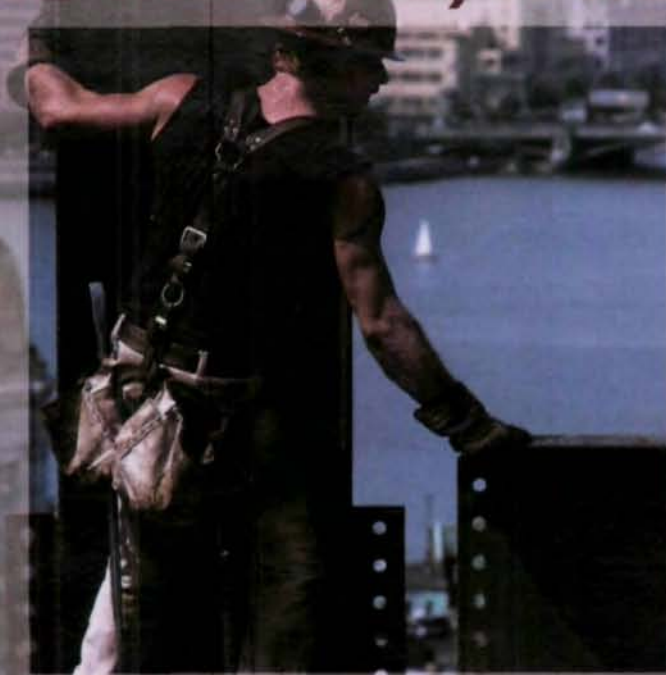
Completion Date:
Oct. 1990
Span Lengths: 1,080'
Roadway Widths: 38'
Steel Wt./Sq. Ft. of Deck:
145 lb./sq. ft.
Steel Tonnage: 3,175 tons
Total Cost:
\$19,000,000
Design Firm:
Howard Needles
Tammen & Bergendoff,
Phoenix, AZ
General Contracting Firm:
Edward Kraemer & Sons,
Plain, WI
AISC Member Fabricator
(ribs):
Pitt-Des Moines,
Des Moines, IA
Steel Erector:
J F Beasley
Construction Co.,
Dallas, TX
Owner:
Arizona DOT

At a time like this, it has to fit.

And with SDS/2, you can be sure it will. In every phase of fabrication — Design Data's SDS/2 assures fitting solutions again and again. Call Design Data — 1-800-443-0782. It's time.

The Design Data Family of Steel Fabricating Software: SDS/2

- Estimating Module
- Detailing Module
- Production Control Module
- CNC Interface Module



Introducing
DesignLINK — electronic communication from engineers to fabricators.

1-800-443-0782
402-476-8278

*Fast in Software
Surviving
Service*

© 1991 Design Data Corporation

DESIGN DATA

AISC Prize Bridge Award

Medium Span, Low Clearance

Ramp B - Turkey Lake Road Over I-4, Orlando, Florida

As the number of tourists heading to Sea World increased, the existing roadways became more and more crowded. While public agencies recognized the need, they lacked the funds to do anything about it. Fortunately, Sea World's owner, Harcourt Brace Jovanovich Land Company (now Busch Properties of Florida, Inc.) was willing to fund the needed improvements.

Although a private owner was building the roadway, it still had to meet certain conditions. Most notable was the need to minimize disruption on I-4, but also important was the requirement that the new roadway allow enough room to accommodate a future expansion of I-4.

Various steel and concrete alternatives were considered, including steel plate girders, steel box girders, and concrete box girders. Erection requirements and cost considerations mandated the choice of a steel box girder structure.

"The major problem we had to overcome was going over I-4," explained Rudy McLellan, P.E., assistant department manager of the structure's department for the Baton Rouge office of Howard, Needles, Tammen & Bergendoff. "But shutting down I-4 completely was not feasible." HNTB's Baton Rouge office provided the structural design for the project and its Orlando office did the geometry for the bridge and highway and designed the abutments.

Because of the need to minimize disruption, the plate girder alternative was rejected in favor of a steel box girder design. "Plate girders tend to have more pieces, which mean a more complicated



erection," McLellan said. "You also need more bracing to support plate girders, and that's not as visually attractive." Likewise, a concrete structure also would have interfered more with I-4 than would a steel structure.

Since the bridge had to go over I-4, clearance was crucial, so the designers chose to use integral pier caps. "The ramp would have needed a higher elevation without the integral pier caps. We probably would have had to raise the whole structure by 6' to 10', which would have added to the cost of the approach and the bridge." And with integral pier caps, a steel box girder structure was less expensive than either a concrete box girder bridge or a steel girder bridge.

Bridge Structure

The final design consists of twin



steel trapezoidal box girders framed directly into pier caps. The bridge has eight spans totaling 1,247', with a 19.5' clearance over four of the spans to allow for a future expansion of I-4. Span lengths range from 105' to 186', with pier heights as low as 23' and as high as 41'. Roadway width is 27'.

Another advantage of a box girder structure is its clean, attractive appearance. The bridge's geometry gives the flyover structure low lines and a sleekness as it curves its way to grade level. And reflecting its source of financing, the steel was painted "Sea World Blue". □

Ramp B — Turkey Lake Road Over I-4

Completion Date:
August 14, 1990

Span Lengths:
1,247' overall;
105' to 186'-6"

Roadway Widths:
27'

Steel Wt./Sq. Ft. of Deck:
49.4 lbs./sq. ft.

Steel Tonnage:
918 tons

Total Cost:
\$4,600,000

Design Firm:
Howard Needles
Tammen & Bergendoff,
Orlando, FL

General Contracting Firm:
Leware Constr. Co.,
Leesburg, FL

AISC Member Fabricator:
Sheffield Steel
Products, Division of
Vincennes Steel Corp.,
Palatka, FL

Steel Erector:
Leware Const. Co.

Owner:
Busch Properties
of Florida

AISC Software For IBM-Compatible PCs

WEBOPEN (Version 1.01)

\$495

Beam Web Opening Design

(Additional same site orders for \$100)

WEBOPEN is based on the state-of-the-art AISC Design Guide, "Design of Steel and Composite Beams with Web Openings," by David Darwin. Written by practicing engineers, Paul J. Ford & Co., for practicing engineers, WEBOPEN incorporates "expert" design checks and warning messages that enhance the application of the AISC Design Guide to your design problems. WEBOPEN's color coded input windows provide users with a clear, logical data entry system that can save hours of structural design time. WEBOPEN design unreinforced or reinforced openings in steel (non-composite) or composite steel beams. Order includes the Software User's manual and the referenced AISC Design Guide.

AISC for AutoCAD (Version 1.0)

\$120

Save time doing detail drawings and have AISC Shapes drawn at your command with AISC for AutoCAD.

This software runs in AutoCAD (Release 10 and above) and draws structural steel shapes and lists their properties corresponding to data published in Part 1 of the 1st Edition, AISC *LRFD Manual of Steel Construction* as well as the 9th Edition, AISC *ASD Manual of Steel Construction*. The program will draw to full scale the end, elevation and plan views using the design dimensions of the following shapes: W, S, M and HP Shapes; American Standard Channels (C); Miscellaneous Channels (MC); Structural Tees cut from W, M and S shapes (WT, MT, ST); Single Angles; Structural Tubing; and Pipe.

AISC Data Base (Version 1.07)

\$60

Dimensions and Properties of Structural Shapes

This ASCII data base contains the properties and dimensions of the following shapes: W, S, M and HP Shapes; American Standard Channels (C); Miscellaneous Channels (MC); Structural Tees cut from W, M and S shapes (WT, MT, ST); Single and Double Angles; Structural Tubing; and Pipe. The diskette also contains data base formats, an explanation of the variables specified in each of the data fields, and read/write and search programs. The data base corresponds to data published in Part 1 of the 1st Edition, AISC *LRFD Manual of Steel Construction* as well as the 9th Edition, AISC *ASD Manual of Steel Construction*.

STEMFIRE (Version 1.1)

\$96

AISC Steel Member Fire Protection

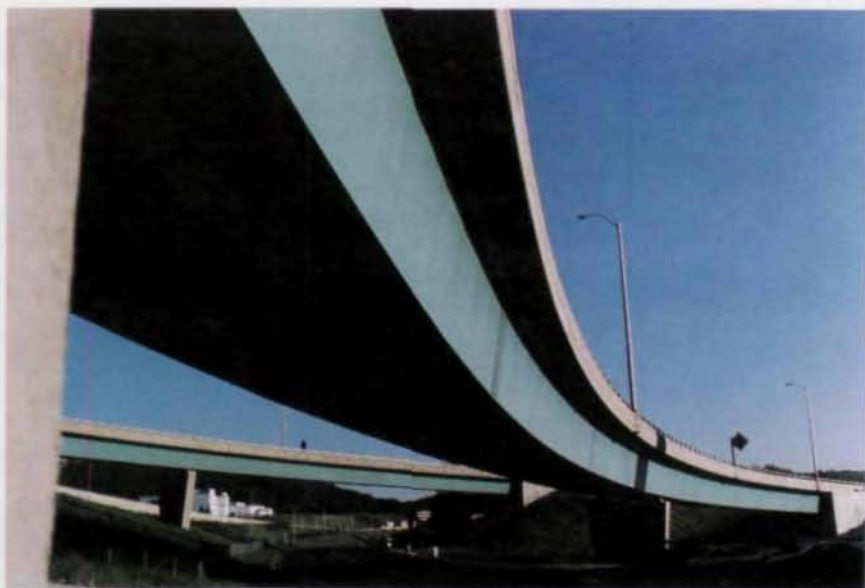
This AISC computer program developed by Hughes Assoc. determines safe and economic fire protection for steel beams, columns, and trusses. It is intended for use by architects, engineers, building code and fire officials, and others interested in steel building fire protection. STEMFIRE is based on rational procedures developed by the American Iron and Steel Institute that extend the published Underwriters Laboratories, Inc., fire resistive designs to other possible rolled structural shapes and common protection material requirements. For a required fire rating, STEMFIRE determines minimum spray-on thickness for various rolled steel shapes as well as the ceiling membrane or envelope protection for trusses.

For more information on AISC Computer Software, call (312) 670-5434 or write: AISC Computer Software, One East Wacker Drive, Suite 3100, Chicago, IL 60601-2001.

AISC Award of Merit

Medium Span, Low Clearance

Ramp X Roadway and Ramp R Roadway,
Danbury, Connecticut



Because of a steep side slope, limited right-of-way and the desire for a high degree of channelization at the ramp terminals, the design for a new interchange connecting the new Danbury (CT) Fair Mall with U.S. Route 7 concentrated ramp development in one quadrant. In addition, the location of a parallel frontage road in the same quadrant as the interchange required two roadway levels and two structures, one spanning double roadways.

The loop ramp consists of high-speed acceleration/deceleration lanes connecting to low-speed ramps. In developing the desired loop configuration, a combination of sharp horizontal curves was necessary for smooth speed change based on the design speed and an acceptable rate of superelevation.

The span arrangement for the outer loop bridge (Ramp X) was determined by the required horizontal clearance for the two roadways under the bridge. This configuration resulted in two equal spans of 210' along a 450' radius. The total structure length between abutments is 420'.

The inner loop bridge (Ramp R) required a 235' span over a single roadway under the bridge. Since it was necessary to maintain an open area under the bridge for access to an adjoining business a second span was required. The final bridge configuration resulted in two unequal spans of 175' and 235' along a compound curve with a minimum radius of 445'. The total structure length between abutments is 410'.

Since the ramps each accommodate a single lane of traffic, the

Ramp X Roadway & Ramp R Roadway

Completion Date:

October 1986

Span Lengths:

Ramp X: 210', 210'

Ramp R: 175', 235'

Roadway Widths:

24'

Steel Tonnage:

Ramp X: 697 tons

Ramp R: 705 tons

Total Cost:

Ramp X: \$2,125,000

Ramp R: \$2,178,000

Design Firm:

STV/Seelye Stevenson
Value & Knecht,
Stratford, CT

General Contracting Firm:

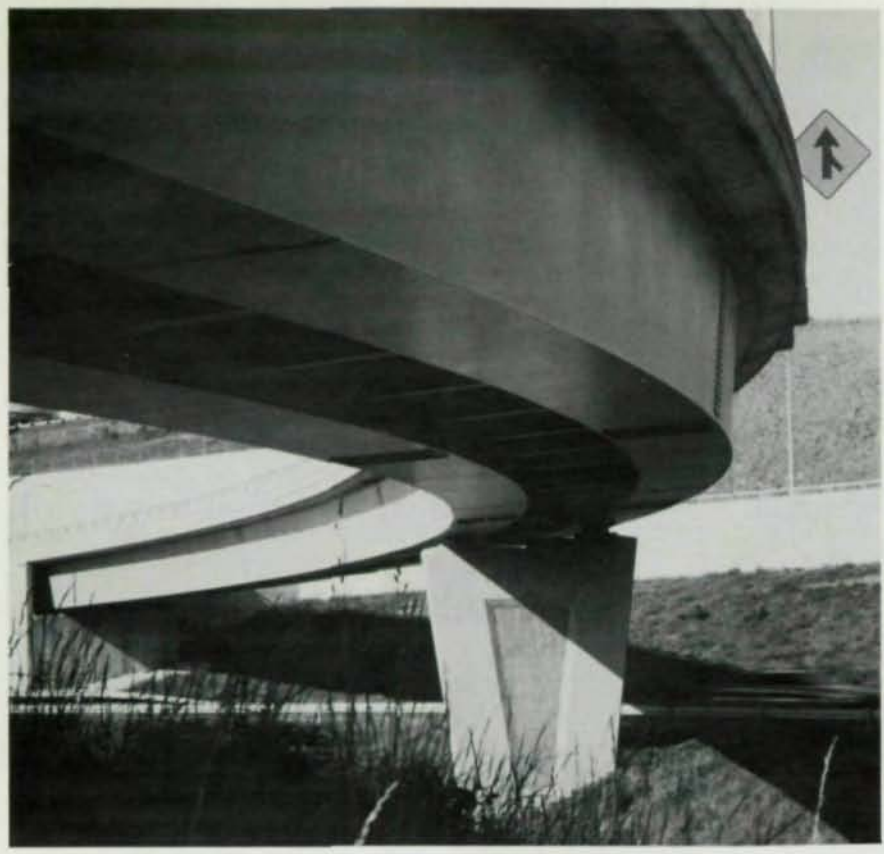
D'Addario Industries,
Bridgeport, CT

**AISC Member Fabricator
and Erector:**

The Standard
Structural Steel Co.,
Newington, CT

Owner:

Connecticut DOT



widths were relatively narrow. Each superstructure was analyzed on a digital computer as a two dimensional grid by the direct-stiffness method. With a middle-ordinate (distance from curve mid-point to chord mid-point) of 12', uplift at the supports was a problem that required substantial torsional rigidity to overcome. Since the ramp geometry was established, the girder length to width ratio—normally reduced to eliminate uplift—could not change. The solution was to increase torsional rigidity by effectively proportioning the external diaphragm size and spacing until uplift under all loading conditions was eliminated.

Two concentrically placed curved steel box girders were selected for a new interchange because of their superior torsional rigidity. "The use of concrete to provide the torsional rigidity was precluded by the limited allowable depth of construction and the need to maintain traffic beneath the structure," explained Robert Gubala, Ph.D., P.E., chief engineer with the Connecticut Department of

Transportation. Also, because of the plan view of the loop alignments, steel box girders could be readily designed and fabricated to fit the required curvature of these roadways, which streamlined the parapets and deck work while creating an attractive appearance.

Rigid diaphragms 72" deep and 14' on center were provided between box girders to distribute shearing forces throughout the grid system.

The top and bottom flanges of the box girders were fabricated parallel to the roadway superelevation. Inclining web plates to the same angle relative to the flanges resulted in uniform 90° web plates, simplifying details and fabrication. The project consists of ASTM A588 steel with both a painted shop coat and a field painted finish coat. The A588 steel was chosen because studies have demonstrated an improved paint performance with that type of material.

The structure were designed for standard AASHTO HS-20 truck and lane loadings according to Allowable Stress guide specifications.

ARKANSAS

SAVES YOU

- TIME
- LABOR
- MONEY

WITH WF BEAM CUSTOM SERVICES:



CAMBERING



TEE-SPLITTING



DRILL & COPE



END MILLING



CUT-TO-LENGTH



STORAGE, TRANSHIP

FREE

LATEST DETAILED INFORMATION: PRICE, SPECIFICATIONS, CAPABILITIES, SERVICES, AND MORE... WRITE OR CALL: ARKANSAS STEEL PROCESSING, INC., 17W697 BUTTERFIELD RD., OAKBROOK TERRACE, IL 60181. (708) 495-8600 Toll-Free 1-800 255-8601 Fax (708) 620-6394



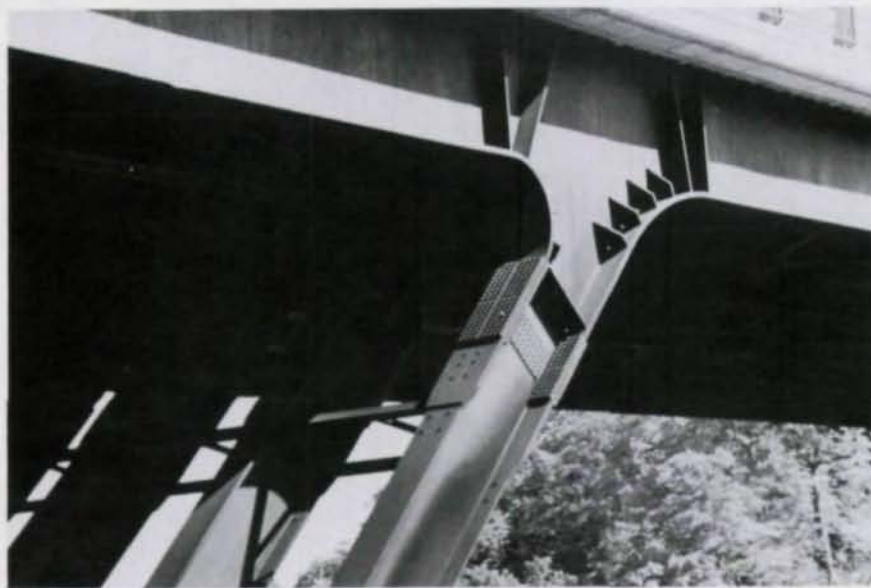
ARKANSAS STEEL PROCESSING, INC. ARMOREL, AR 72310

A FULL-SERVICE STRUCTURAL STEEL PROCESSING CENTER

AISC Award of Merit

Medium Span, High Clearance

Southern Boulevard Route 9W Bridge over
Normanskill, Albany, New York



Located 120' above the Normanskill Gorge, this three span continuous multi-plate steel girder bridge has slanted steel legs instead of more conventional reinforced concrete piers.

"We didn't want to put the piers in the middle of the creek because of a potential erosion problem with the footings," explained Ayaz H. Malik, P.E., an associate engineer (structures) with the New York State Department of Transportation.

In addition, conventional 110'-high reinforced concrete piers would have cost \$800,000 more than the steel legs, which were slanted at a 45 degree angle.

The end spans of the bridge are supported by guided expansion pot bearings, allowing free rotation and longitudinal movement of superstructure at the abutments. A uniform, smooth change in the direction of the axial forces from the main longitudinal girders to the slanted legs is provided by means of a curved knee (haunch). The bridge is 71' wide with four 12'-wide travel lanes, two 8'-wide shoulders and a 4'-wide median.

The structure is indeterminate to the third degree due to the interaction of the longitudinal girder with the inclined leg. The bridge is designed for AASHTO HS20-44 loads using working stress method.

Spacious Design

"The slant-legged structure is pleasing in outline, gives the feeling of openness, and is aesthetically appealing," according to J.M.

Robb, P.E., assistant deputy chief engineer (structures) for NYSDOT. "From abutment to abutment, the proportions of this structure are a perfect fit for the surrounding terrain. The elements of symmetry are fully utilized, demonstrating an appreciation for ratio and scale."

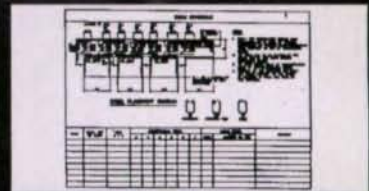
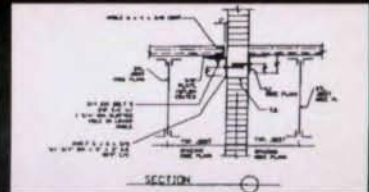
The bridge was built with unpainted weathering steel, both for its rugged appearance and the long-term cost advantages. □

**Southern Boulevard,
Route 9W
Bridge Over Normanskill**

Completion Date:
November, 1986
Span Lengths:
135'; 200' and 135'
Roadway Widths:
71'
Steel Tonnage:
1,100 tons
Total Cost:
\$5,500,000
Design Firm:
New York State
Department of
Transportation,
Albany, NY
General Contracting Firm:
Lange-Finn
Construction, Inc.,
Albany, NY
AISC Member Fabricator:
High Steel Structures,
Lancaster, PA
Steel Erecting Firm:
Syracuse Rigging,
Syracuse, NY
Owner:
New York State
Department of
Transportation

FREE!! FREE!! Structural Details, Schedules and Specifications for AutoCAD™

That's right, for just a nominal charge to cover materials and handling (\$29, regular price \$360), we will send you our powerful AutoSTRUCT files. This is our fullblown AutoSTRUCT, not a watered-down version. How can we possibly afford to do this? It is because we are convinced that once you've tried our software, you will be back for more. You will also receive all required documentation, as well as a catalog for our 100+ programs for concrete, masonry, steel, timber and post-tensioned concrete design. Our programs are developed to run on IBM-PC, PS2, -XT, -AT and most compatibles.



Save Detailing, Drawing and Specification Time with SAI's AutoSTRUCT Program Package

This series of presorted, job-tested standard details has been created by structural engineers with many years of experience in using AutoCAD™. They are ready to use and can be easily modified for your office standards or for a specified need.

Included in AutoSTRUCT are abbreviated structural specifications and various schedules. The specification files are available for word processors and can be used to type on "sticky-back" transparencies, tracings or plain paper. The schedules are available as drawing files for use with AutoCAD™, and are tremendous time savers.

AutoCONC	10 Concrete Drawings
AutoFOOT	5 Footing Drawings
AutoNOTES	5 Specification Drawings
AutoPOST	1 Post Tension Beam Drawing
AutoSCHD	4 Concrete and Masonry Schedules
AutoSTL	7 Steel Drawings
AutoWOOD	19 Wood Drawings

THE MOST PRODUCTIVE STRUCTURAL DESIGN SOFTWARE SINCE 1966



STRUCTURAL ANALYSIS, INC.
555 S. Federal Highway
Suite 210
Boca Raton, FL 33432
(407) 394-4257

YES, Please send me the free AutoSTRUCT (\$29 to cover materials and handling.)
(Offer valid in the U.S.A. and Canada only, expires November 30, 1991)

NAME _____ COMPANY _____
STREET ADDRESS _____
CITY/STATE/ZIP _____
PHONE _____ DESK SIZE: 3 1/2" _____ 5 1/4" _____ MASTERCARD VISA
ACCT. NO. _____ EXP. DATE _____ CHECK ENCLOSED
SIGNATURE _____ DATE _____

Structural Material Sorter Ver. 3.0

A series of programs designed to help steel fabricators manage material.



Call Today For Free Demo Kit!



- Reduces labor — Increases accuracy.
- Automatically computes weights, surface areas, bolt counts and lineal totals.
- Quickly sorts lists into proper order.
- Produces optimum length-cutting lists from in-house stock, vendor's stock or the best combination of each.
- Provides shipping lists based on piece-mark sequence.
- Tallies material costs, shop hours and field hours for easy estimating.
- Uses simplified terms so non-tech personnel can operate with ease.
- External Data Interface can import existing computer-based material lists.
- Call today for a FREE demo kit, including the full system's operator's manual!

E.J.E. INDUSTRIES, INC.

COMPUTER SOFTWARE FOR STEEL PROFESSIONALS

287 Dewey Avenue Washington, PA 15301 (412) 228-8841

AISC Award of Merit

Medium Span, High Clearance

McCarran Boulevard Bridge, Reno, Nevada



As Reno, NV, continues its phenomenal population growth, its infrastructure must grow along with it. However, Nevada's rugged but beautiful terrain place's special restrictions on these projects.

In 1986, Reno's Regional Transportation Commission (RTC) cleared the way for an extension of the west arc of McCarran Boulevard. Though only 4/10 of a mile, it included a 539'-long bridge crossing the SPTC dual main line railroad tracks, the Truckee River, and an open flume water canal. Complicating the design was that Highway 80 cuts across McCarran at a nearly 90 degree angle and atop a 40'-high bluff at the north end of the bridge.

Because the structure would be readily visible from both the highly traveled Highway 80 and a proposed new residential development, the RTC specified that aesthetics were their prime concern—but that the bridge still had to meet a tight construction budget.

Alternates Rejected

Several structural forms were considered but were eliminated because of cost or difficulty of construction, according to Charles Seim, P.E., a senior principal with the San Francisco office of T.Y. Lin International. "An arch was attractive but soil conditions were not suitable to take the arch thrust. A prestressed concrete segmental box-girder was aesthetically acceptable but would cost more than a welded steel plate-girder." Also, the railroad would not allow cast-in-place concrete or shoring over

its tracks, so a conventional concrete box-girder superstructure could not be used.

To make a steel plate girder bridge not just economically acceptable but also aesthetically acceptable, the designer opted to use an integral pier cap system. Unpainted weathering steel was used on the four-span structure both to reduce maintenance costs and to complement the nearby brown Sierra Nevada mountains.

"The north-south alignment of the center line of the McCarran Boulevard Bridge suggested a wide overhanging deck to create changing shadows as the sun passes overhead during the day," Seim said.

"Wide spacing of the steel girders is not only a structural requirement to accommodate a wide overhang, but provides the advantage of lower costs in the fabricating, transporting and erecting of steel girders."

Aesthetic Considerations

To create an uncluttered view from below the bridge, deck width was limited to 95', which only required two columns for support at each bent. The cross-section of the column is a simple rectangle, clipped at each corner to form a lozenge shape that conforms to the shape of the special seismic reinforcement within the column. "The double interlocking spiral is a very efficient method of confining column reinforcement in high seismic areas," according to Seim.

A white bonded grout surface finish contrasts the vertical lines of the columns with the horizontal lines of the brown steel girders and harmonizes with the snowy ice fields in the adjacent mountains.

The horizontal sweep of the steel girders was further accentuated by framing the columns directly into steel cross beams constructed at each bent within the depth of the girders. "This simple idea improved the appearance of the bridge and provided a clean, uncluttered view of the underside of the bridge," Seim said. "The

idea also had an economic benefit, as it saved the cost of forming and placing additional concrete for a conventional column cap."

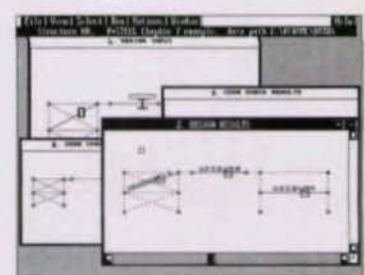
The bridge is structurally continuous over all four spans, with deck joints only at the abutments, and the fascia girders are detailed to conceal their connections to the integral cross girders. "A very clean, continuous line was achieved in the outer girders, accentuating the continuity of superstructure" Seim stated. □

McCarran Boulevard Bridge

- Completion Date: November 1989
- Span Lengths: 93', 145', 165', and 133'
- Roadway Widths: 95'
- Steel Wt./Sq. Ft. of Deck: 25.5 lbs./sq. ft.
- Steel Tonnage: 650 tons
- Total Cost: \$3,842,000
- Design Firms: T.Y. Lin International, San Francisco, CA
- Consulting Firm: SEA Engineering, Sparks, NV
- General Contracting Firm: Centric Jones, Lakewood, CA
- Steel Erector: Skyline Steel Erectors, Glenwood Springs, CO
- Owner: RTC Regional Transportation Commission

Steel Design

New Steel Design Software Aids Transition to LRFD



P-STEEL gives you more design options in less time.

Within P-STEEL is the AISC steel table. The engineer defines parameters then the new MS-DOS software searches and designs based upon your criteria (least weight, lowest cost, least flange width, etc.)... either single step iteration or automated design/analysis.

The hypertext on-line help links the code details with LRFD excerpts and speeds your understanding of this code.



P-STEEL is a graphical package with full mouse support. It runs with Softek's popular 2D analysis package, P-FRAME... and if you know Windows™ you can start designing immediately.

For information on P-STEEL, P-FRAME (2D) and S-FRAME (3D), contact :

 Softek Services Ltd.
 314 East Holly, Suite 106
 Bellingham, WA
 98225
 Phone: (604) 732-3763
 Fax: (604) 732-8467

AISC Prize Bridge Award

Short Span

Susquehanna Street Bridge, Allentown, Pennsylvania



A massive, deteriorating ten-span viaduct was replaced with a gracefully sweeping four-span curved steel beam bridge in Allentown, PA, to re-

establish a key transportation link to the center of the city.

"The old viaduct was obsolete geometrically and structurally," explained George W. Zuurbier,

vice president of structures for McTish, Kunkel & Associates, Allentown. In addition to its advanced state of deterioration which imposed a ten-ton load re-

striction, the predominantly concrete structure had a limited width that impeded traffic flow. "It was a real dog," Zuurbier said.

The first thought was to replace the viaduct, which crossed both a rail line and pedestrian walkways in a park area, with a precast, prestressed concrete structure. However, the 43' height of the crossing meant that piers were very expensive. "With prestressed concrete, we needed a lot of piers. The cost of the piers drove us to seek longer spans, and that led us to a continuous rolled steel beam bridge. We needed to minimize structural depth and cost while maximizing spans and aesthetics," Zuurbier said.

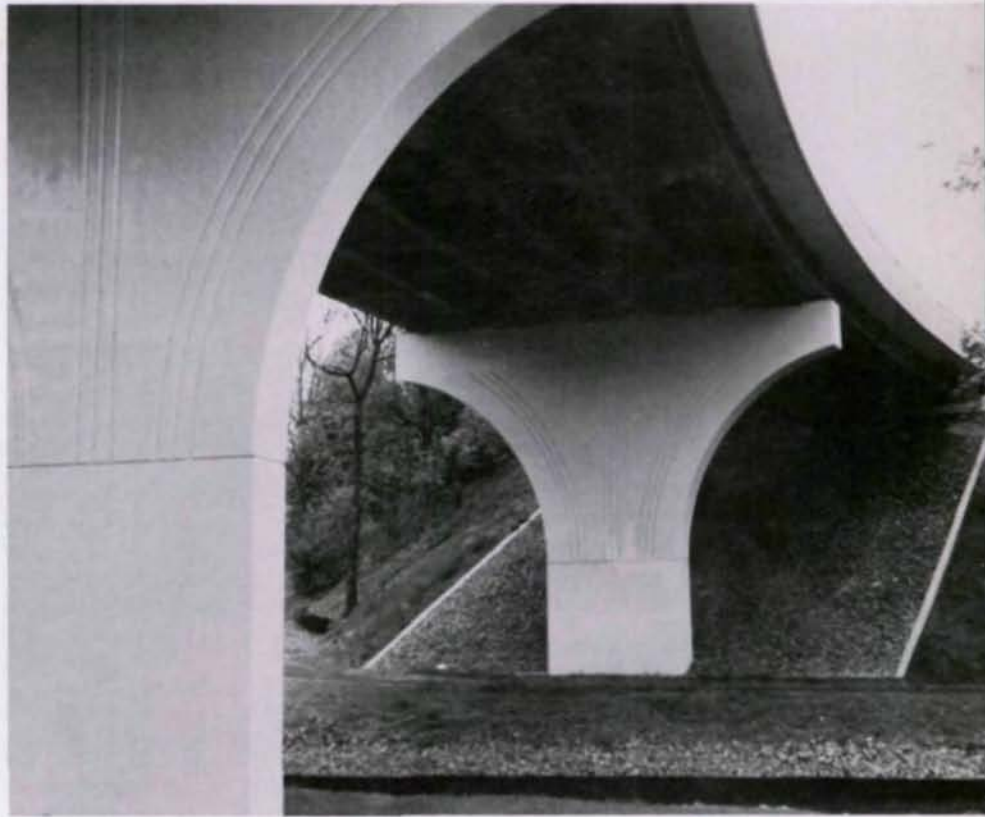
"The use of continuous curved steel beams was a natural solution to a combination of tight vertical clearance and fixed horizontal alignment dictated by approach geometry," he explained.

The structure, which was fabricated of A572 steel, has four spans, two of 60' and two of 80'. One end span was made shallower to clear the railroad tracks, though by making a smooth fairing there was little noticeable visual impact.

"Aesthetics were an important consideration," Zuurbier stated. "The city was very serious that we didn't do just a plain bread-and-butter stream crossing. The use of continuous steel beams gave us very nice lines."

The importance of aesthetics also led the designers to omit the coverplates over the piers. Instead, the beam sizes were increased slightly. "There would have been a very small savings by using coverplates, but it would have been a visual distraction. We instead chose to simplify fabrication and get a better appearance."

The bridge's piers were flared for aesthetic reasons and the connection of transverse diaphragms to the flanges of the main longitudinal stringers were flared for fatigue strength. "As it turned out, these elements complemented each other nicely, and it created both functional and visual attractiveness," Zuurbier added. □



Susquehanna Street Bridge

Completion Date:
October 1989

Span Lengths:
60', 80', 80' and 60'

Roadway Widths:
40'

Steel Wt./Sq. Ft. of Deck:
49.1 lbs./sq. ft.

Steel Tonnage:
275 tons

Total Cost:
\$2,200,000

Design Firm:
McTish, Kunkel
& Associates,
Allentown, PA

Consulting Firm:
Jupiter Engineering,
Allentown, PA

General Contracting Firm:
H.J. Williams, Inc.,
York, PA

Steel Erector:
M.A. Hospador
Steel Erectors, Inc.,
St. Clair, PA

Owner:
City of Allentown (PA)



Where do we st

There are enough things to keep you from completing a project on time. Waiting for steel shouldn't be one of them.

That's why, whether it's a bridge, a skyscraper or any other steel project, you should call on Lukens. Thanks to a new Customer Satisfaction program, supported by new facility and systems

improvements, our on-time performance record has never been better.

Our new ladle refining unit produces high quality steel with remarkable consistency. And our automated mills turn that steel into smooth, flat plate, precisely rolled to the dimensions ordered. Time after time. Resulting in more steel

and on deadlines?

that's on target and ready for delivery.

We've also installed a new computerized order system. In minutes, we can give you a quote, determine the shipping week, and place your order.

So call us. Because, while late may be better than never, at Lukens it's never good enough.

For more information, call Mike Markward,

Marketing Manager, at (215) 383-2291. Lukens Steel Company, Coatesville, Pennsylvania 19320-0911.

**LUKENS
STEEL**
A LUKENS COMPANY

The specialist in plate steels.

AISC Award of Merit

Short Span

St. Peter Street Bridge, St. Paul, Minnesota



A deteriorating and geometrically inadequate bridge was recently replaced with a modern steel bridge in downtown St. Paul.

Although the existing structure was a concrete box girder bridge, the Minnesota DOT opted not to replace it with a similar structure due to maintenance problems with those types of bridges, according to Robert Miller, P.E., bridge design unit leader with MDOT. "Also, the degree of curvature on about a third of the bridge clearly indicated that steel was the best solution," he added.

The bridge is one of the connecting links between the downtown area and the State Capitol complex and spans Interstate 35E-Interstate 94 commons area.

The new structure consists of seven short spans with a total length of 484'. Six of the spans are continuous with lengths varying from 58' to 92', while a simple span was used for the seventh span due to its short, 32' length and because the use of a simple span avoided uplift at the abutment. Because of high retaining walls on both sides of the bridge and an adjacent frontage road, it was impractical to remove all of the old abutment, so a portion of the west abutment from the previous bridge was retained.

Three of the bridge's spans curve 28.5 degrees. Also, because of several roadways below the bridge, the piers have various skews. The skews, along with the curvature of the bridge, result in widely varying beam lengths in some spans.

Limitations of vertical clearance required beams smaller than would normally be used with the total length involved—a welded plate beam with a 3' depth was the deepest beam that could be used—thus a series of short spans were de-



signed. Because of the shallowness of the beams and the curvature of the bridge, a beam spacing of 8'-4" was used, Miller said.

Aesthetic Design

Recently, the governor of Minnesota has instituted a Capitol Complex beautification program to give the area around the State Capitol a unique appearance and reflect the architecture of the Capitol buildings. The continuous girders created a clean appearance for the structure, which also was given a unique character through the use of a special ornamental metal railing and decorative lighting. □

St. Peter Street Bridge

Completion Date:
June 1990
Span Lengths:
32' to 92'
Roadway Widths:
31'
Steel Wt./Sq. Ft. of Deck:
30 lbs./sq. ft.
Steel Tonnage:
356 tons
Total Cost:
\$1,760,940
Design Firm:
Minnesota Department
of Transportation,
St. Paul, MN
General Contracting Firm:
Edward Kraemer
& Sons, Inc.,
Plain, WI
Steel Erector:
Brian Mitchell
Construction Co.,
Green Spring, WI
Owner:
Minnesota Department
of Transportation

GREAT STUFF

from **GRATE-FAST**



FOR FASTENING METAL OR FIBERGLASS BAR GRATING

- ONE MAN FROM ABOVE • NO WELDING • NO DRILLING
- NO PENETRATION OF STEEL OR COATING
- AS EASY TO REMOVE AS IT IS TO INSTALL
- VERSATILITY FOR CONSTRUCTABILITY.

Struct-Fast™

Struct-Fast Inc., 20 Walnut Street, Suite 101, Wellesley Hills, MA 02181
Tel. 617 235 6734 Fax: 617 431 7940 Wats: 800 327 6719

Time Saved Is Profit Earned.

Are your profits ticking away? Minutes wasted in the office because of manual processing or outdated software can equate to hours or days lost in the shop or field.

STEEL 2000 is a new, fully integrated, multi-user steel fabrication management system, created to increase your profits by decreasing the time you spend on each job. Even computer novices can become productive immediately.

Designed and implemented by fabricators, STEEL 2000 is the result of years of research and development by Steel Solutions, Inc., in conjunction with Steel Service Corporation, an operational, multi-plant steel company. Call today for more detailed information — don't waste another second.

Service Center	Mill Orders	Estimating
Fabricator	Purchase Orders	Drawing Control
Inventory	Multing	Accounting

STEEL SOLUTIONS, INC.

2260 Flowood Drive
P. O. Box 1128
Jackson, Mississippi 39215
601-932-2760 FAX 601-939-9359



WE HELPED CALVARY CHURCH



Calvary Church in Charlotte, North Carolina seats 6,200 people.

WHICH SAVE MORE THAN SOULS.

Seating 6,200 people, Calvary Church is, in a word, big. Which meant building the Charlotte, North Carolina structure required exceptional stewardship in order to keep costs down. And we were delighted to be part of the solution. Our super long span joists were ideal for constructing the beautiful sanctuary. And they were far more economical than using steel trusses or a rigid frame.

What's more, our joists were simple to erect. Two sections were easily bolted together on the job site to create joists as long as 172'.

The architect and structural engineer on the project both had previous experience working with Vulcraft, and they had every faith in our performance. They knew they could count on us for on-time delivery, joists that fit, and a solution to any problem that might arise during construction. As a result, they came to us not only for our long span joists, but also for 250,000 square feet of steel roof and floor deck.

We'd like to show you how we can help with your jobs, too, and save more than you might imagine. So contact any of the plants listed below or see Sweet's 05100/VUL and 05300/VUL.

PO Box 637, Brigham City UT 84302 801/734-9433; *PO Box 100520, Florence, SC 29501 803/662-0381; PO Box 169, Fort Payne, AL 35967 205/845-2460; *PO Box 186, Grapeland, TX 75844 409/687-4665; *PO Box 59, Norfolk, NE 68702 402/644-8500; *PO Box 1000, St. Joe, IN 46785 219/337-5411.
*Deck manufacturing locations. Architect/Engineer: Commercial Builders of Kansas Inc.; General Contractor: Metric Constructors; Steel Fabricator: Central Steel Inc.; Steel Erector: Metric Constructors.



Our super long span joists easily bolt together on the job site.



VULCRAFT

A Division of Nucor Corporation

CONXPRT - MOMENT CONNECTIONS

You've heard about **CONXPRT Module I** which designs double framing angles, shear end-plates and single-plate shear connections, well now **CONXPRT Module II** is ready to design moment connections. Welded, flange welded, flange plate welded, flange plate bolted moment connections including **column web stiffener** and **doubler plate design** can be designed with **CONXPRT Module II**.

All designs are according to procedures in the AISC Manuals or latest available references. **CONXPRT** includes complete data bases for standard shapes, structural steel, weld and bolt materials as listed in the AISC 9th Ed. *Manual of Steel Construction*. All strength and serviceability limit states and dimensional requirements for each design are checked. If a design cannot be completed, advice is available.

Provisions are available to set default values for particular project or shop needs, such as any detailing dimension can be kept constant. A complete report listing all connection/design checks can be reviewed on the screen and/or printed. Every shipment comes with a 1-3 User Package (up to 3 installations of **CONXPRT**) and a User's Manual.

Minimum System Requirements

- IBM PC or compatible with 640 Kbytes of Random Access Memory (RAM) and a hard disk drive.
- A 5.25 in. or 3.5 in. floppy disk drive.
- DOS 3.0 or higher
- Optional - color monitor and math co-processor will enhance the program's assets.

CONXPRT Order Form - Modules I and II

Name _____
Company _____
Street/P.O. Box _____
City _____
State _____ Zip _____
Phone (in case of questions on your order) _____

Module I (Simple Connections)

ASD Version @ \$300 ea. ___ \$ _____
LRFD Version @ \$300 ea. ___ \$ _____
Set of both ASD & LRFD
Versions @ \$550 ea. ___ \$ _____

Module II (ASD Moment

Connections) @ \$400 ea. ___ \$ _____

Preferred diskette size:

5¼" or 3½"

Sales Tax (N.Y., Cal., Ill. residents) \$ _____

TOTAL Amount Enclosed \$ _____

Method of payment: VISA Master Card Check or Money order

Card No. _____ Exp. Date _____

Name Imprinted on Card _____

Signature _____

Please enclose payment with order. Sorry, no C.O.D. orders.

MAIL TO: AISC
P.O. Box 806276
Chicago, IL 60680-4124

PHONE ORDERS: 312/670-5434
(Credit card orders only)

For **RUSH** delivery (2-3 days), additional charge is \$45 per phone order.

AISC Award of Merit

Railroad

Soo Line Railroad Bridge over Marshall & Snelling Avenues, St. Paul, Minnesota

As part of the improvement of the intersection of Marshall and Snelling Avenues, the Minnesota Department of Transportation replaced the two Soo Line Railroad bridges that crossed the intersection at a 40 degree skew.

The existing railroad grade separation structures consisted of a four-span concrete viaduct over Marshall Avenue and a three-span steel and concrete bridge over Snelling Avenue. In addition to carrying two Soo Line Railroad tracks, they also carried a steam pipeline.

The site constraints and the severe skew of the roadways with respect to the existing railroad alignment presented several design and construction problems. In addition, rail operations and vehicular traffic had to be maintained at all times, and all utilities had to be kept in service throughout construction.

The new structure is a three-span, single-track ballasted deck structure comprised of welded through plate girders. The girders are approximately 12' deep and the floor system is made up of transverse floor beams and a steel plate deck.

The 171'-long span over Marshall Avenue and the 113'-long span between the roadways are skewed sharply to satisfy the site geometry. As a result, the framing of the floor system at the skewed ends of these spans is quite complex. The 144' long span over Snelling Avenue has two square ends. "The utilization of long steel spans on this project eliminated the need for large skewed piers located in the roadways and resulted in substantial cost savings," according to Charles L. Ballou, P.E., a principal with Bakke Kopp Ballou & McFarlin Professional Engineers, Minneapolis. In



addition, a concrete structure would have been impractical

due to the headroom constraints presented by the existing roadways.

As part of this project, an independent bridge structure was designed and constructed to support the existing steam pipeline. The steam pipeline bridge is adjacent to the railroad structure and is of sim-

ilar design using long span welded steel plate girders.

Construction staging entailed relocating the live railroad track to one side on the existing bridges and building a temporary structure to support the steam pipeline. A portion of the existing bridges was then removed to facilitate construction of the new railroad substructure. After the railroad spans were



Snelling & Marshall Railroad Bridge

Completion Date: May 1990
 Span Lengths: 171', 113', 144'
 Roadway Widths: 21' and 12'
 Steel Wt./Sq. Ft. of Deck:
 138 lbs./sq. ft.
 Steel Tonnage: 985.5 tons
 Cost: \$5,200,000

Design Firm:
 Bakke Kopp Ballou
 & McFarlin Prof. Eng.,
 Minneapolis, MN

Consulting Firm:
 Alfred Benesch & Co.,
 Chicago, IL

General Contracting Firm:
 Lunda Construction Co.,
 Rosemount, MN

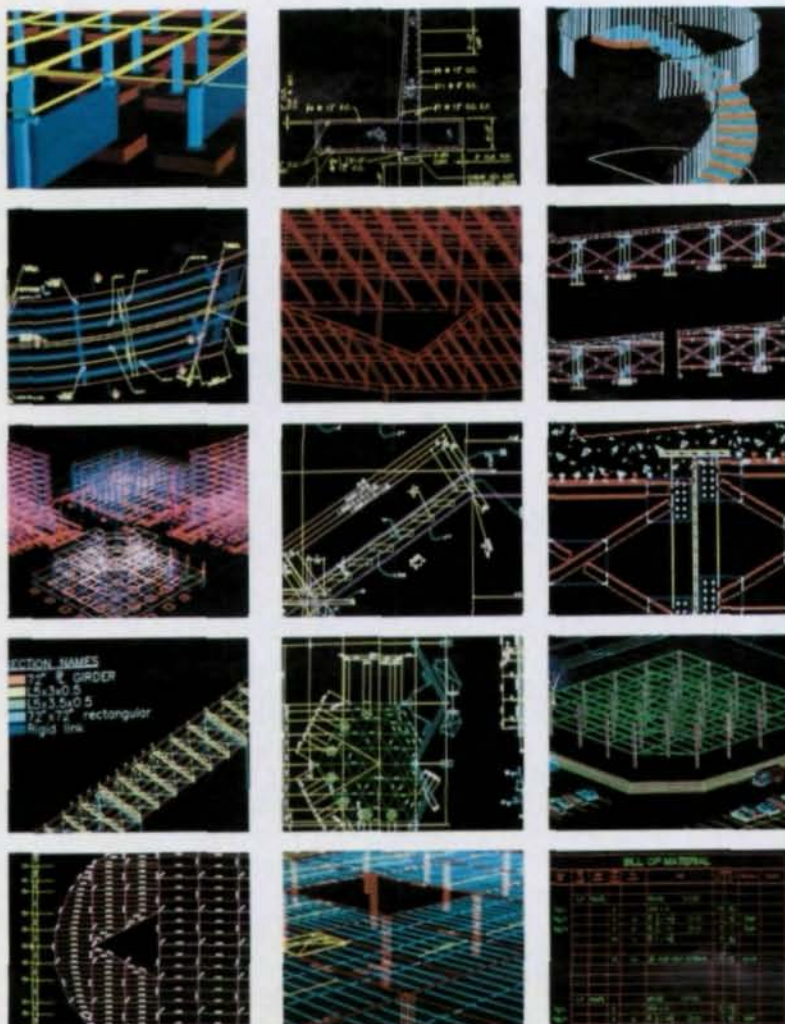
AISC Member Fabricator:
 Phoenix Steel Inc.,
 Eau Claire, WI

Steel Erector:
 Hi-Boom Erecting, Inc.
 Black River Falls, WI

Owner:
 Minnesota Dept. of Trans.

set on the completed substructure and the track shifted to its final location, the remaining portion of the existing bridge was removed to allow construc-

tion of the pipeline substructure. Once the spans were set and the pipeline relocated, the temporary pipeline bridge was removed. □



SOFTDESK Meeting the Challenge... of Structural Engineers.

Offering the most comprehensive,
 integrated software solutions that run
 inside the AEC industry standard
 AutoCAD®.



SOFTDESK
 FORMERLY DCA SOFTWARE, INC.

7 Liberty Hill Road
 Henniker, NH 03242 USA
 603/428-3199 FAX 603/428-7901

AECADO, Softdesk and the Softdesk logo are trademarks of Softdesk, Inc. AutoCAD is registered in the U.S. Patent and Trademark Office by Autodesk, Inc. DCA Software is not affiliated with Digital Communications Associates, Inc.

#2 IN A SERIES

THE MEN OF STEEL



Otokar von Bradsky, Structural Engineer
Senior Vice President
Paulus, Sokolowski & Sartor Inc. Warren, NJ

The Trump Taj Mahal's 44-story hotel tower presented a unique structural engineering problem to Otokar (Pete) von Bradsky. The design called for a 420 foot tower, 350 feet in length by only 68 feet in width. Yet, it had to withstand Atlantic City's potentially hurricane force winds of up to 100 m.p.h.



Following a design analysis and cost study of two steel and two concrete structural systems, the Trump Taj Mahal tower became the largest, staggered-truss steel framed structure in the world (at that time).

To enter your steel framed building in our 1991 Engineering Awards, call for an entry form today!



New Jersey-based fabricator, Steel Structures Corp. of Upper Saddle River, joint-ventured the 12,000 tons of steel. It saved an estimated \$8,000,000 and provided faster erection than the other alternatives. It also had architectural benefits including large column-free spaces (a feature the owner



sought) and the elimination of all shear walls. For hidden strengths that deliver more ROI, select steel – and New Jersey fabricators – for your next project.

STRUCTURAL STEEL ASSOCIATION & ADVANCEMENT FUND OF NEW JERSEY

11 Cleveland Place,
Springfield, NJ 07081
(201) 467-1625

AISC Prize Bridge Award

Elevated Highway or Viaduct

SR-386/I-65, CSX R.R., Two-Mile Pike,
Nashville, Tennessee



The need to minimize the number of piers led the Tennessee Department of Transportation to choose a continuous welded plate girder bridge to connect an urban interstate highway with a newly constructed bypass.

"We looked at a prestressed concrete bridge, but we needed a design with as few piers as possible and one which would provide the needed vertical clearance," explained Edward P. Wasserman, P.E., civil engineering director of structures for Tennessee DOT. Steel was the obvious answer for achieving the desired span length while also accommodating the needed curvature.

The bridge is required to span the mainline of an interstate railroad, an urban arterial highway, and part of a fully developed shopping center.

To achieve the necessary vertical clearances, the designers opted to use integral pier caps in three locations.

Integral, cast-in-place, post-tensioned concrete bent caps were thrust between continuous steel welded plate girders at the interstate median and the shoulder of the road away from the abutment to conserve headroom and avoid the impacts of the severely skewed crossing of the interstate.

An integral steel bent cap, spanning 60' and supporting 164' of bridge span was used to allow passage of an entrance to the shopping center between supporting columns. The details of the integral steel cap were designed and detailed to eliminate biaxial tensile stresses in the flanges of the cap. "A

steel cap worked out better in this area than a concrete cap because of the considerable width of the structure and the limited number of available column locations," Wasserman explained.

Bent locations, span arrangements and superstructure materials were selected to maximize the joint use areas underneath the structure over the shopping center and to provide the desirable horizontal and vertical clearances over the highways and railways. Also, the roadway was designed to minimize the total vertical distance from the finished grade of the bridge to the features crossed, and to minimize disruption.

**SR-386/I-65,
CSX R.R.,
Two-Mile Pike**

Completion Date:
January 1991

Span Lengths:
136', 179', 148', 118'

Steel Wt./Sq. Ft. of Deck:
39.93 lbs./sq. ft.

Steel Tonnage:
3,785 tons

Total Cost:
\$9,000,000

Design Firm:
Division of Structures,
Tennessee Department
of Transportation,
Nashville, TN

General Contracting Firm:
Rogers Group, Inc.,
Nashville, TN

AISC Member Fabricator:
Carolina Steel Corp.
Greensboro, NC

Steel Erector:
Sentry Steel
Service Co.,
Madison, TN

Owner:
Tennessee Department
of Transportation

TRY IT FREE FOR FOUR MONTHS

THE MDX AASHTO COMPOSITE STEEL BRIDGE GIRDER DESIGN PROGRAM

This is not a demo, but the same program being used under license by some of the largest ENR Top 500 Firms. Use the program for four months under no obligation, then either enter a license agreement or simply return the program and purge it from your system.

- Features:**
- Generates and loads influence lines for up to twelve continuous spans, then designs on the first pass with a powerful optimization method (one that works!)
 - Horizontal (variable radius) curvature capability
 - Box girder, plate girder, rolled shapes, hybrid steel
 - Designs so that fatigue stress ranges are satisfied
 - All types of web haunches
 - Shear connector spacing
 - Dead and live load deflections
 - Analysis or design mode
 - Sequential slab placement studies for constructibility
 - 1991 AASHTO Interim
 - (And many more)

Requires: DOS 3.0 or above, 640k RAM, and math coprocessor

To order a free, four month trial of our program send fax with company cover sheet specifying:

- (1) Load Factor or Working Stress version
- (2) 5.25" or 3.5" disks

MDX SOFTWARE

Fax: (314) 446-3278
Ph: (314) 446-3221

IF YOUR PRODUCTS ARE AIMED AT STEEL CONSTRUCTION...

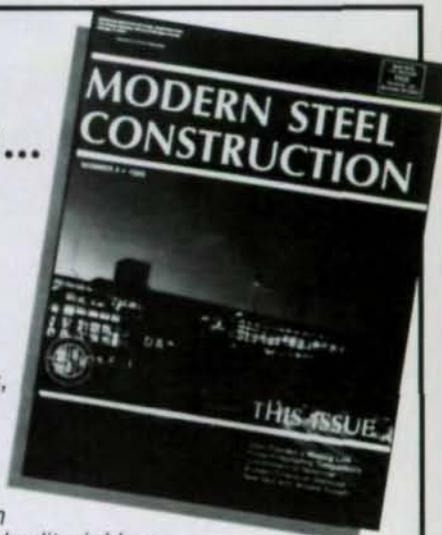
SO ARE WE. *MODERN STEEL CONSTRUCTION* is the only magazine aimed exclusively at the steel construction industry.

- Our controlled circulation of 44,000 is made up of structural engineers, architects, contractors, steel fabricators, erectors, developers and code officials. ...whose only interest is building with steel!
- As the official publication of the American Institute of Steel Construction, our well-read editorial has impeccable credibility.
- Our readers have buying authority. 79% are involved in specifying for their company's projects.

**IF YOU WANT STEEL CONSTRUCTION DECISION MAKERS...
YOUR AD BELONGS IN MODERN STEEL CONSTRUCTION!**

MODERN STEEL CONSTRUCTION

To place your ad, or for more information, contact:
Eric Nieman, Advertising Sales at (708) 679-1100.



AISC Prize Bridge Award

Grade Separation

I-10/I-17 Interchange, Phoenix, Arizona



A steel girder system with a shallow superstructure and limited lateral bracing proved the most economical option for a major interchange in Phoenix.

The I-10/I-17 Interchange connects the two roadways with a complex four-level

I 10 / I 17 Interchange

Completion Date: August 1989
Span Lengths: 120' to 250'
Roadway Widths: 27'-2" to
79'-2"

Steel Wt./Sq. Ft. of Deck:
25.1 lbs./sq. ft. (mainline)
41.3 lbs./sq. ft.
(curved ramp)

Steel Tonnage: 19,700 tons
Total Cost: \$55,000,000

Design Firms:

Parsons, Brinckerhoff
Quade & Douglas, Inc.,
New York, NY
HDR Engineering, Inc.,
Omaha, NE

General Consultant:

Howard Needles
Tammen & Bergendoff
Phoenix, AZ

General Contracting Firms:

Tanner Construction,
Phoenix, AZ
Kasler Corp.,
Highland, CA

AISC Member Fabricator:

Utah Pacific Bridge & Steel,
Pleasant Grove, UT

Steel Erecting Firms:

Schuff Steel Co.,
Phoenix, AZ
Adams & Smith/McGrath,
Concord, CA
Mohawk Bridge & Iron,
Phoenix

Owner:

State of Arizona DOT

multidirectional interchange. It consists of eight high- and low-level ramp viaducts and an elevated mainline interstate roadway that rises up to 87' high. Varying in length from 720' to 3,940', the ramp widths range from 27' to 39' and their curvature varies from 400' to 2,000'.

HDR Engineering, Omaha, was responsible for the design of the twin 4,200' mainline viaducts. The viaducts are primarily on tangent and each consist of five multi-span units that are 79'-2" wide, except where they flair to meet the interchange ramps. The mainline structures have a six-girder cross section with 14' spacing for the constant width and nearly 16' spacing for flaring units. Finite element analysis was used to compute project-specific live-load distribution factors.

All of the ramps, which were designed by the New York City office of Parsons Brinckerhoff Quade & Douglas, Inc., are curved, multi-span units. A three-girder system with a composite cast-in-place deck slab was chosen for the one-lane ramps and a four-girder system with a composite cast-in-place deck slab was chosen for the two-lane ramps.

The cost effectiveness of the steel interchange revolved around design features that reduced the depth and length of superstructure spans and avoided bulky and costly lateral bracing, according to Vijay Chandra, P.E., vice president of Parsons Brinckerhoff Quade & Douglas. "Superstructure depth was reduced by building the girders into integrally framed steel pier caps with redundant load paths for improved reliability," he explained. "This provided the necessary clearance over the busy interstate. The alternative would have been to raise the piers and pier caps for higher clearance, driving the entire project into higher, longer spans—and higher costs."

Another cost saving measure was to avoid the use of lateral bracing wherever possible. "We increased the flange size while maintaining the normal crossframe spacing, and thereby virtually elim-

inated lateral bracing," Chandra said. "It was only used in the vicinity of steel pier caps on one ramp that could be struck by overheight vehicles traveling on the interstate below." Analysis showed that enlarging the flanges needed for the curved girders would provide ample stiffness in most locations without bracing.

The ramp structures consist of up to five-span continuous curved girder units, designed by the load factor method and using hybrid

design in which girder webs were of normal-strength steel and flanges of high-strength steel. The grid approach of the CUGAR program, coupled with design programs developed in-house, provided an efficient design for the girders. The load factor design method as well as hybrid and mixed girder design also helped achieve economies in the design of the mainline.

The project was completed on-budget and on-time. □

Compact... Quick... Powerful

NEW!



846D CNC ANGLEMAX II FROM W.A. WHITNEY...

Makes your angle fabricating process profitable.

- Compact—Two 75-Ton Presses and 70-Ton Shear all mounted on one rigid frame
 - Continuous feed eliminates drop-off sections
- Quick—New ANGLEMAX II control simplifies setup programming and operation
 - Produces up to 320 3-hole clips/hour
- Powerful—Fabricates up to 6" x 6" x 1/2" A572 angle
 - Punches holes up to 1-1/2" diameter
 - Processes flat stock up to 6" x 1/2"

OPTION: Marking press and material handling for infeed/outfeed.

Talk to your local W.A. Whitney distributor. Call or write us at:



W.A. Whitney Corp.
650 Race Street, P.O. Box 1206
Rockford, Illinois 61105-1206
815/964-6771 • Fax: 815/964-3175

AISC Award of Merit

Grade Separation

Bridge "B" over MCO Entrance Road, Orlando, Florida



The need to accommodate a 19 degree curvature while still creating a structure with that would enhance driver's sightlines led the designers of a new Return Road Interchange at the Orlando International Airport to choose a twin trapezoidal, steel box girder bridge.

The structure, 285' in length, carries two lanes of returning traffic from Terminals A and B across the airport's entrance road. The bridge is located on a 300' radial alignment as it spans a four-lane lower roadway.

"Line-of-site for the entering traffic was of particular concern as various merge activities occur just beyond the bridge location," explained Bruce A. Moulds, P.E., director of structural engineering for the Atlanta office of Howard Needles Tammen & Bergendoff. "The wide open three-span structure with deep abutments set well beyond the roadway edges was selected to enhance the reaction time of the entrance road users to merging vehicles."

In addition, Moulds said, the twin steel box superstructure is supported by a cross girder and single pedestal pier to reduce the tunnel effect more traditional piers would create on a roadway with such a large skew.

"Use of continuous, composite twin trapezoidal steel box girders were the logical choice considering the bridge's sharp curvature and the Airport's emphasis on aesthetics," Moulds said. The lines formed by the deck overhangs and the webs of the 54" box were carried beyond the end of the superstructure and into the abutments to help blend the bridge into the landscaped surroundings. "The retaining walls were designed to look like a continuation of the box," according to Moulds. □

Bridge "B" Over MCO Entrance Road

Completion Date:
October 1990

Span Lengths:
90', 115', 90'

Roadway Widths:
45'

Steel Wt./Sq. Ft. of Deck:
30 lbs./sq. ft.

Steel Tonnage:
230 tons

Total Cost:
\$2,325,000

Design Firm:
Howard Needles
Tammen & Bergendoff,
Orlando, FL

General Contracting Firm:
Hubbard
Construction Co.,
Orlando, FL

AISC Member Fabricator:
Carolina Steel Corp.,
Greensboro, NC

Steel Erecting Firm:
V & M Erectors,
Pembroke Pines, FL

Owner:
Greater Orlando
Airport Authority



New 70 ksi Steel Closes A Strength Gap

The 3,950 foot Paris Landing Bridge in Tennessee includes the first application of new USS COR-TEN B-QT Steel (ASTM A-852), quenched and tempered to provide 70 ksi (480 MPa) minimum yield strength. It was developed by U.S. Steel to close the gap between the 100 ksi, and 50 ksi yield strength steels used in bridge construction. The new structure is a multiple span plate girder bridge, replacing an existing steel truss design.

COR-TEN B-QT was selected for the flanges of the main beams in areas of high stress. The increased yield strength of COR-TEN B-QT achieves the required strength, allows a constant web design, and avoids the expense of haunch girders. COR-TEN B-QT is weldable utilizing shop and field methods similar to those required by 50 ksi COR-TEN B Steel (ASTM A-588, Grade A). COR-TEN B-QT is a weathering steel with greater atmospheric corrosion resistance than carbon steel. By following the FHWA guidelines for the use of uncoated weathering steel, it virtually eliminates the need for painting with possible significant cost savings.

U.S. Steel has led the industry with structural steel innovations like COR-TEN B-QT. You will be seeing more from U.S. Steel to confirm steel's cost and functional advantages in bridge construction.



U.S. Steel Group
a division of USX Corporation

Owner and Designer:
Tennessee Department of
Transportation

Fabrication:
Carolina Steel Corporation

Prime Contractor:
McKinnon Bridge Company, Inc.

Steel Erector:
ABC Contractors, Inc.

USS and COR-TEN are registered
trademarks of USX Corporation

AISC Prize Bridge Award

Movable Span

U.S. 10 over St. Croix River, Prescott, Wisconsin

When the Wisconsin Department of Transportation decided to replace a deteriorated vertical lift bridge over the St. Croix River, public opinion was firmly in favor of a bascule bridge.

"The existing two lane vertical lift bridge had serious structural and mechanical problems," said Stanley J. Sylwestrak, P.E., president of Hazelet + Erdal, Inc., Chicago. The new structure provides four lanes of traffic on its 54'-wide roadway. In addition, it features an 8'-wide combination sidewalk and bikepath on its north side.

To meet the requirement for the 160' navigation channel, a double leaf rolling lift bascule with leaf cantilever lengths of 90'-6" was selected. Each leaf consists of two welded plate bascule girders, welded plate girder floor beams or bolted floor beam trusses and bolted tees as stringers, which support a steel open grid floor on the front arm of a reinforced concrete deck on the rear arm. The concrete counterweight is supported by vertical and horizontal trusses embedded in the concrete.

The rolling lift design was selected because it can provide the necessary clear channel opening with approximately a 10% reduction in length of cantilever arm compared to that needed with a trunnion bascule.

"This savings in bascule span length has additional importance on the rear arm of the girders and the counterweight," Sylwestrak explained. "For any weight eliminated from the front arm, approximately three times that weight is removed from the counterweight. The shorter arm also reduces the area of the moving leaf exposed to the wind. These factors, coupled with the reduced rolling friction in



operation, account for about a 20% reduction in required power compared to that required to operate a comparable trunnion bascule bridge."

The bascule girders were fabricated in two pieces and spliced in the field with high strength bolts. High strength steel segmental castings are fastened to the girders to form a portion of a wheel with a radius of 10'. "These castings serve as bearings to transmit all loads directly into the substructure," Sylwestrak said. "Pairs of segmental casting stiffeners are extended from the casting web to form sockets that engage mating elements on alternate sides of the horizontal track casting to maintain alignment of the span during opening and closing movements."

Approaches

The two approaches are parallel stringer spans made up of eight

welded, two span continuous plate girders acting compositely with the reinforced concrete deck in the positive moment areas. Steel cross frames provide lateral distribution of surface loads to the stringers.

Shop connections were either welded or high strength bolted, while all field connections except for the grid floor utilized high strength bolts. The steel grid floor was welded to the flanges of tee sections, which were bolted to the web of inverted tee sections to form supporting stringers. This detail provides an economical method of replacing the grid in the future. The open grid deck is supported by asymmetrically split W21 sections bolted together to form stringers 17-1/2" deep. When the grid needs replacing, the design concept allows the 4" upper tee to be replaced with a standard size 4" tee section. □

199304

US 10 Over St. Croix River

Completion Date: Feb. 1991

Span Lengths:

115', 125'-3", 108'-3",
108', 222' (bascule)

Roadway Widths: 54'

Steel Wt./Sq. Ft. of Deck:

58.8 lbs./sq. ft.

Steel Tonnage: 1,345 tons

Total Cost: \$12,500,000

Design Firm:

Hazelet + Erdal, Inc.,
Chicago, IL

Consulting Firm:

Teng & Associates,
Chicago, IL

General Contracting Firm:

Lunda Constr. Co.,
Black River Falls, WI

AISC Member Fabricator:

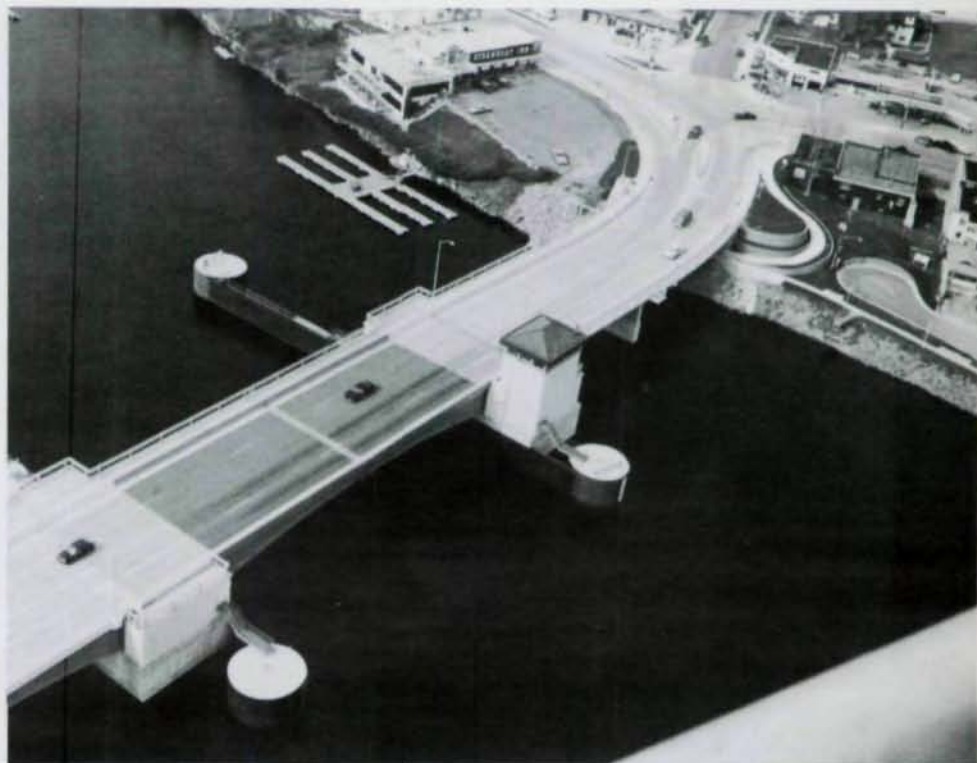
Phoenix Steel,
Eau Claire, WI
(approaches)
Vincennes Steel,
Vincennes, IN
(bascule)

Steel Erecting Firm:

Hi-boom Erecting, Inc.,
Black River Falls, WI

Owner:

Wisconsin DOT



A325, A490 "RAPID TENSION" BOLTS

Rapid Tension structural bolts from NSS have the **lot identification** number stamped on the head for complete traceability. American made. **Rapid Tension** bolts meet the highest industry standards and are the best bolts you can buy. Use your head — insist on **Rapid Tension** structural bolts from NSS.



NSS
INDUSTRIES

9077 GENERAL DRIVE • PLYMOUTH, MI 48170
313-459-9500 • 800-221-5126 • FAX 313-459-4830

AISC Award of Merit

Movable Span

Greenpoint Avenue Bridge, New York City, New York



When an inspection of one of New York City's busiest movable bridges revealed that the bascule piers were rotating toward midspan via differential movement, the New York State Department of Transportation decided that the bridge needed to be replaced. "Because of the foundation condition, it was determined that any repair to the structure would be short term and that the old span should be replaced," explained Richard W. Christie, P.E., a partner with Hardesty &



Greenpoint Avenue Bridge

Completion Date:

June 1989

Span Lengths:

204'

Roadway widths:

56'

Steel Wt./Sq. Ft. of Deck:

150 lbs./sq. ft.

Steel Tonnage:

1,000 tons

Design Firm:

Hardesty & Hanover,
New York, NY

General Contracting Firms:

(joint venture)
Morrison-Knudsen Co.,
New York, NY
Yonkers

Contracting Co.,
New York, NY

AISC Member Fabricator:

Harris Structural
Steel Co., Inc.,
Piscataway, NJ

Steel Erecting Firm:

RICE-Mohawk U.S.
Construction Co., Ltd.,
Bronx, NY

Owner:

New York City DOT/
New York State DOT

Hanover, New York.

The Greenpoint Avenue Bridge spans the Newtown Creek separating the boroughs of Queens and Brooklyn and has an average of 2,000 openings per year. In addition to heavy marine traffic, the four-lane roadway is clogged with commercial and passenger vehicle traffic enroute to-and-from midtown Manhattan.

All four leaves of the old bridge had independent machinery drives. The need to keep the structure open to vehicular structure at all times led to the design of a new four leaf configuration. "Our scheme was to partially demolish a corner of the old bridge to allow the construction of half of the new bascule piers and half of the new bascule span superstructure," Christie said. "After the first stage was completed, demolition of the remaining portion of the old bridge could be completed and the second half of the new bridge constructed."

The new bridge is a simple trunnion arrangement with the centerline of trunnions 202' on centers. The distance from the trunnion to the heel is 31', making each girder 133' long. Girder depth is 15' at the trunnion, 5' at the toe, and 15' at the centerline of the counterweight. The bascule span is typical floorbeam and stringer framing. The floorbeams are spaced at 22'-4-1/2" on centers and they frame into the bascule girders. The stringers are continuous over the floorbeams and are spaced typically at 4'-6" centers. The stringers support a 5"-deep steel grating that is partially filled with an epoxy mortar with basalt aggregate. The two bascule girders are 30'-6" apart and the two center bascule girders are 2'-10" apart.

While the design for the trunnion columns was simple in detail, it still required special consideration. "The space between girders was so tight it was necessary to have both inboard girder trunnions supported on one column and one bearing," Christie explained. "The trunnion would be loaded and operational with the first stage leaf for a considerable period of time until

the second stage leaf was ready for erection. Because of possible axial shortening of the center column when the stage two leaf was added, which could have produced undue wear or bonding of the trunnion bearing already in place, we had the center column designed to meet what we felt were appropriate limits for axial misalignment of the trunnion shafts." Also, the columns supporting the outboard bascule girders were cambered for dead load axial shortening.

The length of the live load arm

made forward live load supports desirable, according to Christie. The forward towers became part of the truss with the trunnion columns becoming the rear leg. The trunnion tower trusses were made up of welded plate horizontal and diagonal members with the diagonals also supporting the main pinion bearings. The truss members were bolted together after the accuracy of the erection was verified.

With the simple trunnion configuration, the tower supported uplift to each trunnion bearing. □

"Since we've been using RAMSTEEL, our proposals can include two or three framing layout solutions with three or four options each. RAMSTEEL has given us the ability to analyze and design these systems within a normal response time for a request for proposal.

RAMSTEEL not only provides us with tremendous design power but also the ability to market this power at proposal time.

This marketing advantage has been an unexpected benefit of RAMSTEEL."



Rob Culp
President, Culp and Tanner

How does RAMSTEEL give you the advantage?

Simple. Our software allows an engineer to design the gravity portion of a structural framing system for a building floor-by-floor! It interfaces with lateral analysis and CAD software to provide complete design and information

presentation capabilities—FAST. Your prospective client can see your design advantage. That's your marketing advantage.

For more information about RAMSTEEL call toll free today.

1 800 726 7789



RAM ANALYSIS INTEGRATED
STRUCTURAL SOFTWARE

RAM Analysis
55 Independence Cr.
Suite 201 • Chico
California 95926

**RAMSTEEL SOFTWARE
DESIGN ADVANTAGE
MARKETING ADVANTAGE**

Why is Bethlehem's w in the Inverset™ Here's the long a



Bethlehem's weathering steel and the innovative Inverset bridge system are a perfect fit.

Inverset offers engineers an economical solution for a wide variety of bridge requirements—whether for long-span, short-span, new construction or bridge replacement projects.

And that's important. Because, according to FHWA estimates, of some 580,000 bridges in the country, over 40% are structurally deficient or functionally obsolete.

The Inverset bridge system, manufactured in the Northeast by The Fort Miller Company, uses upside down deck casting techniques to provide a high-quality, pre-compressed concrete deck on lightweight prestressed steel stringers. This results in an economical unit ready for field placement. Additional savings are gained through rapid erection

and minimum out-of-service time. The modules can be placed either longitudinally or transversely. Their light-weight design characteristics make Inverset the ideal solution where dead load is a constraint.

Why weathering steel?

The use of high-strength ASTM A588 weathering steel beams adds to the overall economy—both initially and down the road.

Compared to ordinary ASTM A36 steel, weathering steel's 38% higher yield strength permits structures to have lighter, slimmer sections. And since weathering steel resists corrosion, painting is rarely required. In addition, weathering steel's rich, brown oxide coating blends with the environment without disturbing it.

9620
9396

Weathering steel used in Bridge System? and the short of it.



Bethlehem's weathering steel was recently used by The Fort Miller Co. in two upstate New York projects. The Rockwell Falls Bridge rehabilitation project for the Hudson River Bridge at Lake Luzerne, NY, required just 28 days of downtime. The units, which were positioned transversely, replaced the existing floor beams and deck on the 180-ft.-long bridge.

The erection of the Outlet Road Bridge in Saratoga County, was completed in half a day. Three 9-ft. 6 1/2-in.-wide units were used longitudinally on the 35-ft.-long structure.

The Fort Miller Co. is sold on the aesthetics and cost-saving benefits of weathering steel. We think you'll be, too.

To get a copy of our Product Booklet, No. 3790 and our latest Technical Bulletin, TB-307 on "Uncoated Weathering Steel Structures", Call: (215) 694-5906.

Bethlehem Steel Corporation, Construction Marketing Division, Bethlehem, PA 18016.

Rockwell Falls Bridge: (left)
Owners: Saratoga and Warren Counties, State of New York
Fabricator: Seibel Modern Manufacturing and Welding Co., Lancaster, NY
General Contractor: J. H. Maloy, Inc., Albany, NY
Outlet Road Bridge: (right)
Owners: Saratoga County, State of New York
Fabricator: Seibel Modern Manufacturing and Welding Co., Lancaster, NY
General Contractor: Schultz Construction Inc., Round Lake, NY
Consulting Engineer: Greenman-Pedersen Inc., Albany, NY
Inverset Licensee: The Fort Miller Company, Inc., Schuylerville, NY
Weathering Steel Supplier: Bethlehem Steel Corporation, Bethlehem, PA

Bethlehem 

AISC Prize Bridge Award

Special Purpose

The Link, Kansas City, MO



Photography by Timothy Hursley

In order to reinforce the identity of Crown Center as a unified complex, the developers realized that they needed to provide easy access from one building to another. While that may seem like an easy task, in this case it was greatly complicated by the need to span three major thoroughfares.

After examining the site, the architects, Zimmer Gunsul Frasca Partnership of Portland, suggested a triangular-shaped pedestrian walkway with sweeping curves. They envisioned "an elevated walkway which would not erode street life or be a visual detraction, but instead would make amends by being as amusing and light-hearted as it is convenient."

The serpentine structure has three distinct walkway sections spanning a total of 880' and connecting five buildings. The glass enclosed, 18' x 18' triangular cross section features exposed tubular steel and 3"-thick composite cellular deck with a 2-1/2" concrete topping slab. To minimize heat gain, a green-tinted solar glass was specified. Also, the sloping glass walls easily shed ice and snow in the winter.

Complicating the project, however, was the limited number of potential support locations. "Crossing over streets and intersections severely limited the support locations," explained Mike Walkiewicz, P.E., structural engineer with KPFF Consulting Engineers, Portland. "In many cases, we could only provide supports on islands or at street corners." In addition, the architects had pre-determined a bay size of 18', which placed geometric restraints of the curvature of the walkway.

The first section of walkway, which connects a Hyatt Regency Hotel with the 2400 Pershing office building, is the longest, spanning

325' over two roadways. Computer analysis determined that because of its geometry and triangular shape the ends of the structure should be tied to the existing structures. Intermediate supports are hinged at their base, which allows the walkway curvature to change, thus reducing thermal loads and stresses.

At the Hyatt end, the walkway is connected to an existing reinforced concrete basement wall with through bolts and drilled anchors to resist thermal and lateral loads. At the office building terminus, two 16'-long drag plates with bolts through the roof slab transfer these loads.

The triangular shape and alternating steel diagonal members of the walkway make it inherently stable and enable it to resist the torsional forces resulting from its curvature and from lateral loading. Cellular composite deck was selected to strengthen and stiffen the floor and to provide a smooth surface at the exposed walkway soffit.

The second section of the walkway is 300' long. It runs between the 2400 Pershing building and the adjacent 2405 Grand building, creating an atrium. The sloping roof structure and walkway are tied rigidly into the high-rise 2405 Grand building, and are free to move laterally at the adjacent low-rise 2400 Pershing building.

The third section, which spans 200' over a major street, connects two office buildings with the Westin Hotel complex. This section is similar to the Hyatt Regency part of the walkway with one major difference: the connecting point for this walkway coincides with an existing expansion joint between the Westin Hotel and its retail complex, which prohibits tying the walkway rigidly to the hotel. Instead, this span was rigidly tied to the office buildings. The expansion joint at the Westin end facilitates a total movement of up to 6" under thermal and lateral loads.

"The architect wanted to express the structure, so steel was the obvious choice," Walkiewicz said. However, since the steel was being exposed it meant that the structure's diagonals were laid out



for their visual impact rather than for structural necessity. "The result was that some of the members were in tension, while others were in compression." The engineers, using a SAP90 program, accommodated the layout by changing the wall thickness of the 8" x 8" steel tubes.

Because of concerns for both shop and field fit-up sequencing, the steel fabricator/erector constructed a 1/4-scale mockup of two bays of the walkways, complete with scaled connection plates, which enabled any potential problems with design or erection to be easily spotted.

The walkway was shipped to the site in two-bay sections, in some cases with the deck already in place. Half-spans were then assembled in the median strip of Pershing road and lifted onto scaffolding with two cranes. This process significantly reduced the amount of required field welding.

Heavy traffic on adjacent streets dictated that span lifts could only be done during weekends. Because virtually all fit-up was done in the shop or on the ground, no field fit-up problems were encountered. Steel fabrication and erection was completed on a five-month schedule. □

The Link

- Completion Date:
November 1988
- Span Lengths:
880' total;
108' max.
- Roadway Widths:
10' (pedestrian)
- Steel Wt./Sq. Ft. of Deck:
65 lbs./sq. ft.
- Steel Tonnage:
300 tons
- Total Cost:
\$4,829,132
- Design Firm:
Zimmer Gunsul
Frasca Partnership,
Portland, OR
- Consulting Firm:
KPF Consulting
Engineers,
Portland, OR
- General Contracting Firm:
J.E. Dunn
Construction Co.,
Kansas City, MO
- AISC Member Fabricator &
Erector:
The Bratton Corp.,
Kansas City, MO
- Owner:
Crown Center
Development Corp.,
Kansas City, MO

AISC Award of Merit

Special Purpose

Geneva Spur Pedestrian Bridge, West Chicago, Illinois



Final appearance was the primary deciding factor in choosing a design for a pedestrian bridge over 10 rail tracks in West Chicago, but economics and the need to curve around an existing high voltage tower also played important roles.

"An old two-span truss bridge once crossed the tracks, but it was long gone when we started this project," said Charles D. Smith, S.E., a senior associate with Envirodyne Engineers, Inc., Chicago. However, the designers were able to use reduce costs by using the pre-existing embankments. "We tried to use the old abutments, but couldn't because of the need to curve around the high voltage tower."

Various alternates were considered before the designers settled on a steel, two-pinned arch span connected to steel girder approach spans. Among the options considered was a wood covered bridge, but it was deemed too susceptible to fire. Various concrete structures, as well as a steel truss alternate, were rejected as too difficult to curve around the tower. A full steel girder design was considered, but the arch was chosen as being more attractive.

The 494'-long bridge structure is comprised of six spans, one consisting of a 263' steel, two-pinned arch span, with the five remaining approach spans consisting of rolled steel girders. Two of the rolled steel girder spans are curved to avoid interference with the high voltage tower.

Two steel box sections were used for the arch. The height of the arch above springline is 53'-6". Since the footprint of the arch is very narrow, each arch section was placed on a 1:12 vertical batter towards each other to provide addi-

Geneva Spur Pedestrian Bridge

Completion Date:
Spring 1990

Span Lengths:
44' to 263'

Roadway Widths:
10' (pedestrian)

Steel Wt./Sq. Ft. of Deck:
44.7 lbs./sq. ft.

Steel Tonnage:
132 tons

Total Cost:
\$1,200,000

Design Firm:
Envirodyne
Engineers, Inc.,
Chicago, IL

General Contracting Firm:
Belvidere
Construction Co.,
Belvidere, IL

AISC Member Fabricator:
Munster Steel Co., Inc.
Munster, IN

Steel Erecting Firm:
AREA Erectors, Inc.,
Rockford, IL

Owner:
DuPage County
Division of
Transportation

tional stability as well as to improve the bridge's appearance. As a result, at the base there is 17'-3" between the arches, while at the top there is only 8'-4".

The steel box section ties between the two arch sections to provide a simple, clean look. The bridge walkway has a clear 10'-width with a 4'-high structural tube steel handrail on each side set into a 9" curb. The walkway in the arch span is supported on rolled steel floor beams space on 20' centers. The floorbeams were connected to the longitudinal arch tie beams and the tie beams were hung from the steel arch sections with steel tie rods. Lateral stability of the suspended walkway is provided by a steel tie rod bracket system placed below the roadway.

Surrounding the embankments is a wetlands area. "We had to design an erection sequence that would minimize disturbance to that area," said Smith.

Each arch is comprised of five sections, and two sections on each



side of the arch were spliced together with high strength bolts on the ground prior to erection. "Two temporary supports in the rail yard

were used to hold the two end sections in place while the center section was erected and bolted into place," Smith explained. □

IT IS FUN TO
DESIGN STEEL CONNECTIONS

USING

DESCON

AN EASY TO USE SOFTWARE PACKAGE FOR YOUR PC

25 TYPES OF BEAM TO COLUMN CONNECTIONS, BEAM SPLICES AND BEAM TO GIRDER CONNECTIONS

MOMENT CONNECTIONS
SHEAR CONNECTIONS
BOLTED AND WELDED

EXTENSIVE DATA BASE OF SHAPES, MATERIAL PROPERTIES AND SPECIFICATION REQUIREMENTS INCLUDED

FOR INFORMATION CALL OR WRITE TO:

OMNITECH ASSOCIATES
P.O. BOX 7581
BERKELEY, CA 94707
415-658-8328

ECOM SES™
Structural Expert Series

- + Written by Practicing Engineers
- + Over 1,800 Installations
- + 18 Years Experience

2D and 3D Frame Analysis
Steel Beam/Column Design
Composite Steel Design
Concrete Design
**Now available on UNIX
for Sun and IBM RS/6000**

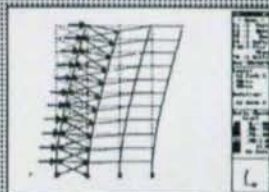
For a **FREE** DOS Demo set call 414-354-0243

ECOM Associates, Inc.
8634 W. Brown Deer Rd.
Milwaukee, WI 53224

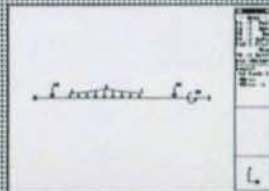
RISA-2D

**Rapid Interactive Structural Analysis
Two Dimensional**

Whether designing multistory buildings



or just checking a single member,



**RISA-2D is the best tool for the job.
Give us a call and see for yourself!**

For a demo, call: **1 (800) 332-7472**
FAX: **(714) 863-0244**

17900 Sky Park Circle, Suite 106
Irvine, CA 92714

RISA
TECHNOLOGIES

AISC Prize Bridge Award

Reconstructed

Paducah Tied Arches, Metropolis, Illinois
and Paducah, Kentucky



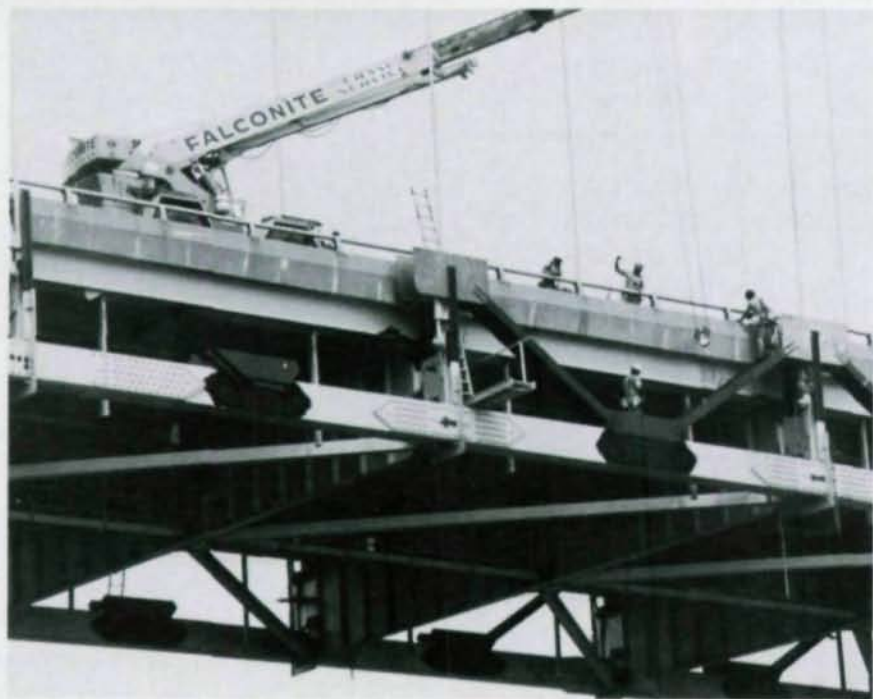
The Ohio River crossing of FAI 24, built in 1973, contains two major tied arch spans of 630' and 730'. These spans have stiff compression ribs and ties with relatively light bending stiffness. And until recently, the bridge also had excessive vibration and fatigue cracking.

"There was excessive vibration even under a single truck, and that contributed to the fatigue cracking," explained John M. Kulicki, Ph.D., P.E., a partner with Modjeski and Masters, Mechanicsburg, PA. In addition, there were a lot of web gaps—small areas of unconnected metal that moved back and forth. "There were a lot of those type of details throughout the structure," he added. "The floor beam responds to the local load, while the ties to the lateral system respond to the overall load. The movement was out of sync."

Dynamic studies of the arch spans were made using the finite method and the results were compared to the vibration modes and frequencies found in the field to confirm that the structures were correctly modeled. As modifications were considered for decreasing the vibration, each was studied and evaluated for effectiveness using the finite element models.

Stiffening trusses, using the arch tie as the bottom chord, were designed and added to reduce the amplitude of the arch vibrations. The trusses were proportioned so the top was at the same level as the roadway parapet, which meant motorists would not see any addition to the bridge.

The stiffening trusses were erected while maintaining two lanes of traffic across the bridge at all times, except for three 30-minute



closings for final connections. In order to compensate for the additional load in the tie caused by the weight of the added truss members, the load in the tie was reduced by the addition of post-tensioning, which ran the full length of the span.

The completed trusses reduced the deflections and vibrations in both arch spans to an acceptable level with an accompanying reduction in stresses in floor system members.

"The addition of the trusses does not detract from the beautiful sight lines of the original arch structure—the trusses cannot be seen by the motoring public, and from a river view, the proportions are appropriate to the structure," Kulicki stated. □

Paducah Tied Arches

Completion Date:
July 1990

Span Lengths:
630' (unit II)
730' (unit V)

Roadway Widths:
30'

Steel Wt./Sq. Ft. of Deck:
19 lbs./sq. ft.

Steel Tonnage:
824 tons

Total Cost:
\$3,565,500

Design Firm:
Modjeski and Masters,
Mechanicsburg, PA

General Contracting Firm:
John F. Beasley
Construction Co.,
Dallas, TX

AISC Member Fabricator:
Vincennes Steel Corp.,
Vincennes, IN

Steel Erecting Firm:
John F. Beasley
Construction Co.,
Dallas, TX

Owner:
Illinois Department
of Transportation

THE AMERICAN PUNCH CO.

**Punches • Dies
Shear Blades**

*for Angleline, Beamline
and Portable Punches*

- ★ • Lowest prices
- ★ • Quality
- ★ • Service

**Call
1-800-243-1492**

FAX 216-381-1037

The American Punch Co.
685 S. Green Rd. • Cleveland, Ohio 44121

A-3095

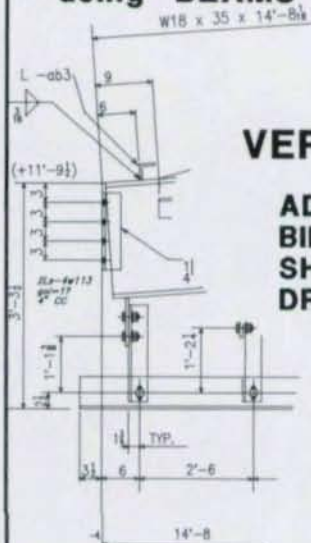
BEAM DETAILS in minutes

using "BEAMS & COLUMNS"

with AutoCAD®

VERSION 4.0

ADDITIONAL FEATURES INCLUDE
BILLS OF MATERIAL
SHOP CUTTING LISTS
DRAWING MANAGEMENT



**OTHER PROGRAMS AVAILABLE FOR
DETAILING**

*BEAMS, COLUMNS, STAIRS,
PLANS AND ELEVATIONS,
BRACING, GUSSETS,
MATERIAL MANAGEMENT*

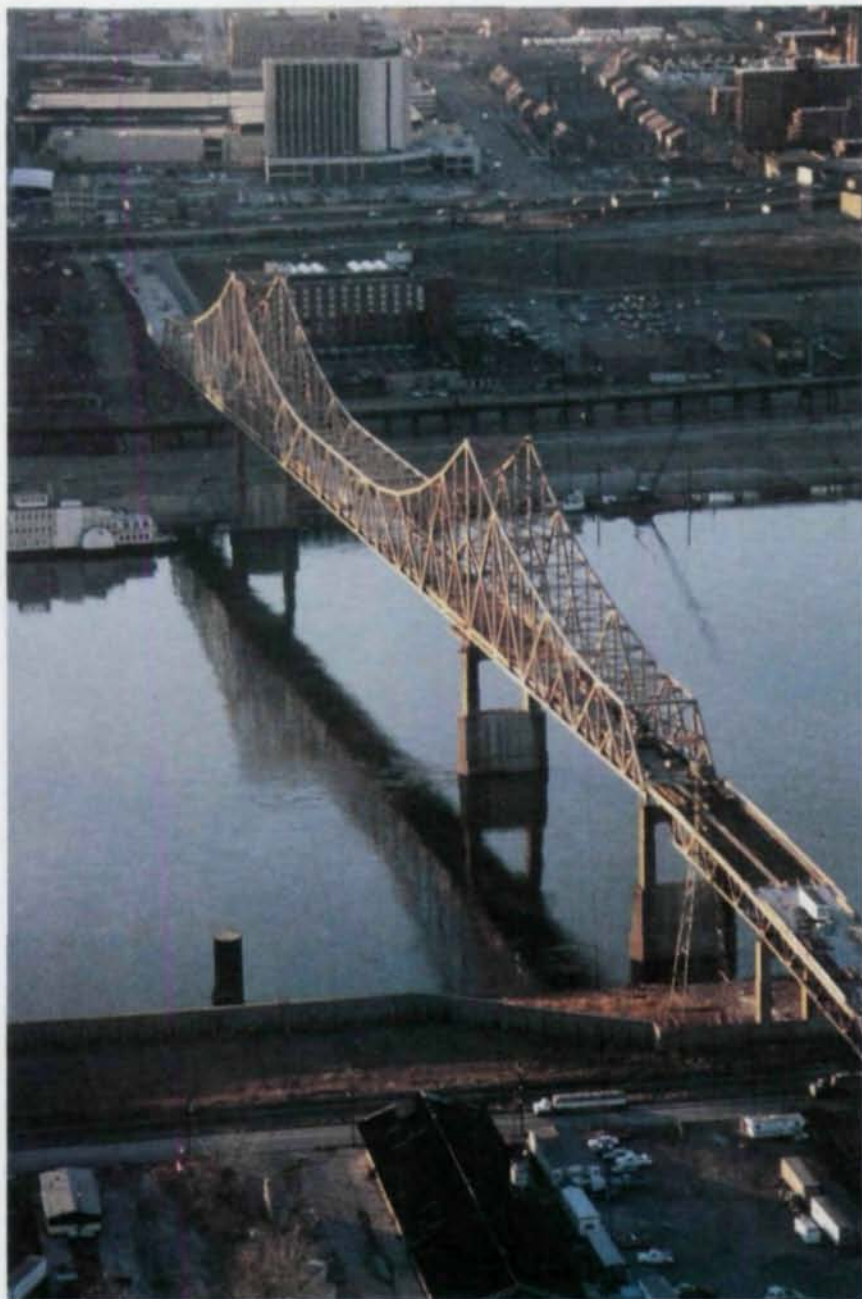
CALL NOW!
For information about saving time
with productivity programs from

COMPUTER DETAILING CORPORATION
1310 Industrial Blvd.
Southampton, PA 18966 215-355-6003

AISC Award of Merit

Reconstructed

Martin Luther King Bridge, St. Louis, Missouri



Spanning the Mississippi River from East St. Louis, IL, to St. Louis, MO, the Martin Luther King toll bridge served as a major artery connecting the two cities for nearly 40 years.

The bridge was owned by East St. Louis, an extremely cash-strapped municipality, and as a result had undergone virtually no repairs since the early 1960s. By 1986, the bridge had deteriorated so

Martin Luther King Bridge

Completion Date:

June 1989

Span Lengths:

River Bridge: 35 spans,
4,010' total, 963' max.

Approach Bridge:
1,296' total, 250' max.

Roadway Widths:

40'

Steel Tonnage:

1,530 tons

Total Cost:

\$26,000,000

Design Firm:

Sverdrup Corporation,
St. Louis, MO

General Contracting Firm:

Massman
Construction Co.,
St. Louis, MO

AISC Member Fabricator:

Stupp Brothers
Bridge & Iron Co.,
St. Louis, MO

Steel Erecting Firms:

Ben Hur
Construction Co.,
St. Louis, MO
Keeley & Sons, Inc.,
East St. Louis, IL

Owner:

Illinois Department
of Transportation

badly that inspectors were worried a car would fall through its deck. The two outer lanes were closed to traffic and the structure was downgraded from its original load rating of 20-tons to a 10-ton limit. However, being a steel structure, the bridge was repairable.

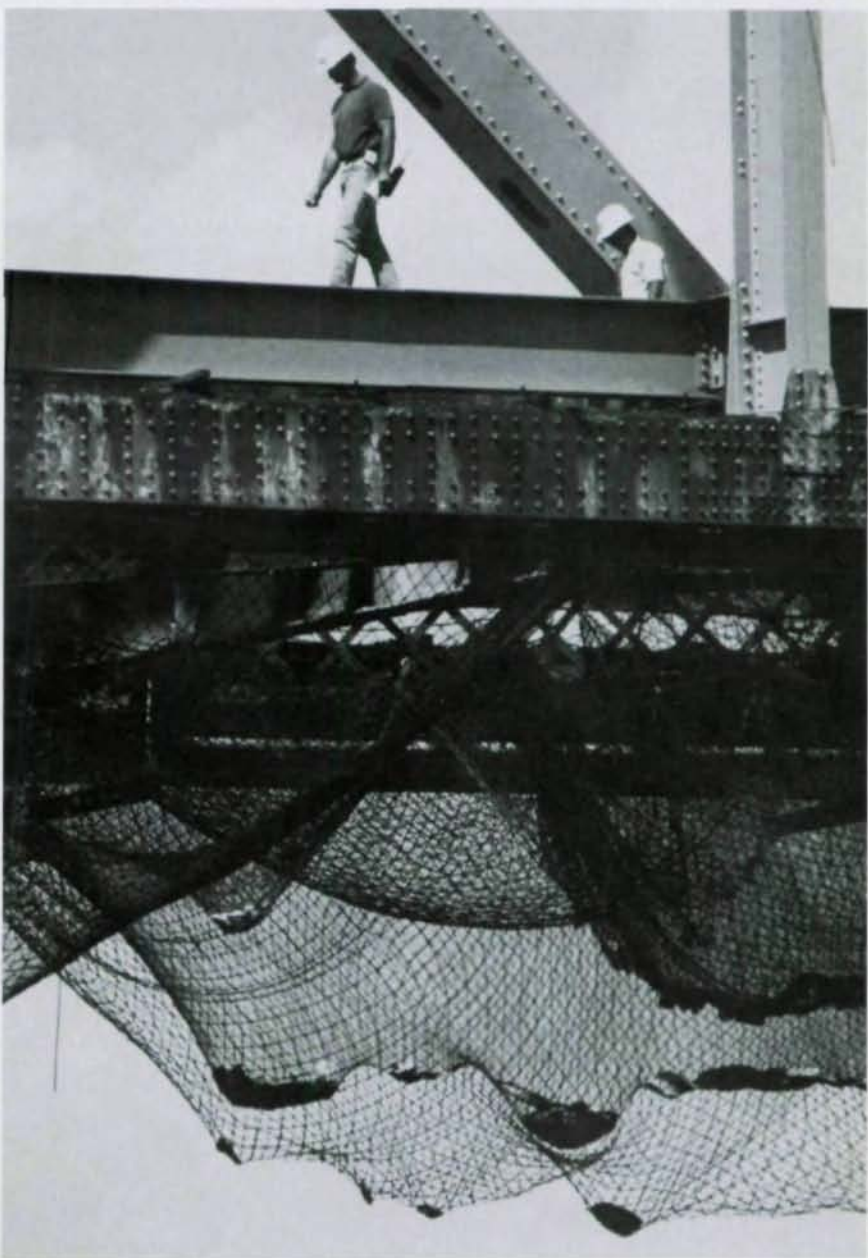
Unfortunately, East St. Louis did not have money for repairs; however, the Illinois DOT was willing to assume ownership of the bridge and finance the desperately needed repairs.

The renovation included: removal and replacement of the exterior stringers in every span and the removal and replacement of all stringers in the main span of the river bridge; removal and replacement of floor beams and strengthening of others where required; complete removal of five girder spans, including substructure units, and replacement with a new three-span, continuous welded plate girder structure, including new substructure units; complete removal of the existing bridge decks and replacement with new cast-in-place and concrete-filled steel grid decks; structural repair of substructure units; removal of all lead-based paint and replacement with a new coating system; and installation of new deck expansion joints.

The renovation involved the installation and repair of 1,530 tons of steel. Engineering began in September of 1986, with design completion in October 1987. The construction contract was awarded in January 1988, with construction commencing in April 1988 and being completed in May 1988.

The minimal construction time was accomplished through the use of detailed repair drawings. "Normally, rehabilitation designers provide generic instructions and quantities for making repairs," explained James K. Van Buren, vice president-T&PW, Sverdrup Corp., St. Louis. "However, the provision of precise details and specification allowed the fabrication and delivery of materials to be expedited."

The renovated structure, which is expected to last more than 50 years with normal operations and



proper maintenance, was upgraded from its original H20 designation (for 20-ton trucks on two axles) to HS20 (for semi-trucks with trailers on three axles with a total weight of up to 36 tons).

Problems and Solutions

- One potential problem during renovation was how to keep balanced loads on the bridge. "Removal of extensive amounts of concrete and steel from one end of the bridge causes the structure to become unbalanced and subject to possible failure," said Van Buren. To maintain load balance during renovation, construction materials were stockpiled on one end of the bridge while construction was occurring at the other end. Also, roller bearings at the abutments were replaced and new larger pins were installed.
- During the 1960s, the bridge's expansion joints had been paved over, causing the drainage troughs to be full of asphalt. As a

result, structural steel, especially along the outside of the deck, was corroded by the combination of collected water and deicing salt brine. The solution was to create a new closed system on the approach spans to collect water and route it back to the municipal storm drainage system. The steel also was sandblasted and completely repainted with a four-coat system.

- As with any renovation work, demolition activity had to be carefully monitored to protect against falling debris. To protect barges and other river craft, the contractor provided an extensive netting system anchored beneath the bridge. Also, during sandblasting operations, a movable platform with a contained enclosure was mounted under the bridge to catch the sandblasted particles.

Design Innovations

One of the biggest challenges of the project was to increase the

strength of the river bridge to accommodate the increased live load rating. The engineering team determined that the solution was to add weight to the steel truss approach spans but reduce weight in the main spans.

The original approaches were 6" slabs of reinforced concrete and the main span was a 4-1/2" steel grid filled with concrete. The entire deck was covered with a 1-1/2" layer of asphalt. The new approach span deck systems are composed of 8-1/2" slabs of concrete, while the main span decks were made up of a steel grid with only the top 2-1/2" filled with lightweight concrete. A waterproof membrane over the concrete protects the steel grid deck. The membrane is topped with a 1-1/2" layer of asphalt.

To save weight, lightweight aluminum parapets or Jersey-type safety barriers were specified. Also, high-strength bolts replaced rivets, providing increased strength with minimal weight gain. □

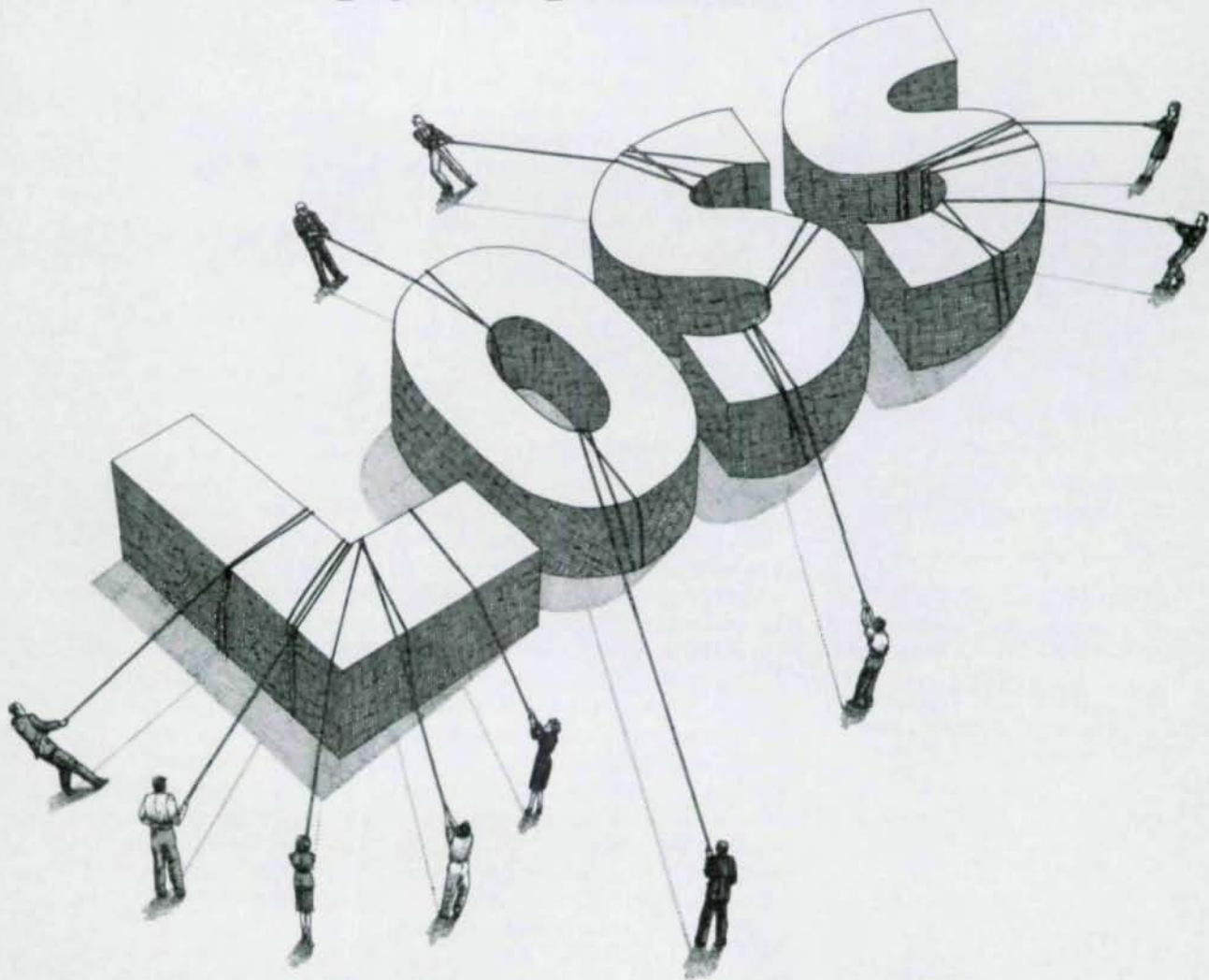
WE KNOW SOME OF YOUR
COMPETITORS ARE PRODUCING
SHOP DRAWINGS 10 TIMES
FASTER THAN YOU...
OUR CUSTOMERS



200 E. ROBINSON
ORLANDO, FLORIDA 32801

1-800-456-7875

Working together, AISC and CNA help keep losses under control to keep your premiums down.



The AISC business insurance program offers you a very important benefit: A loss control program that not only helps keep premiums down, but also is available at no extra cost. Only the close working relationship between the CNA Insurance Companies and AISC makes this possible.

By listening to your association, we understand the risks of the structural steel

fabricating business. As a result, the CNA Insurance Companies can offer you a loss control program that may help reduce injuries and may ultimately reduce premiums. We are proud to say this program has been endorsed with the AISC "Seal of Approval."

Take advantage of this comprehensive insurance program designed especially for and endorsed by AISC. Call 1-800-CNA-6241.

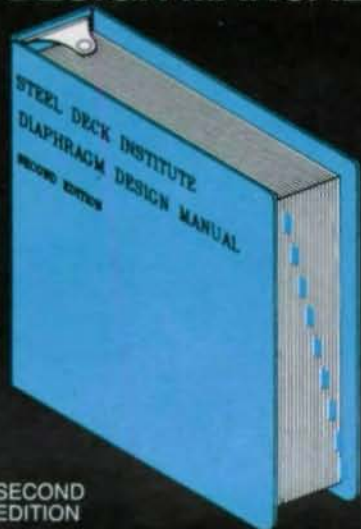


The CNA Insurance Companies underwriting this program will vary according to the coverage. Available in the Continental U.S. only. These companies include: Transportation Insurance Company, Valley Forge Insurance Company, Continental Casualty Company, National Fire Insurance Company of Hartford, Transcontinental Insurance Company or American Casualty Company of Reading, Pennsylvania. CNA Plaza/Chicago, IL 60685.

CNA

For All the Commitments You Make®

UPDATED COMPREHENSIVE DIAPHRAGM DESIGN MANUAL



SECOND
EDITION

A reference source that
contains the answers to all
of your questions!

**FOR PRACTICING
ENGINEERS & ARCHITECTS!**

Organized For Easy Use/Explicitly Illustrated

EASY REFERENCE TO

- Diaphragm Strength
- Diaphragm Stiffness
- Connections
- Concrete Filled Diaphragms
- 62 Pages Filled with Shear Diaphragm Examples
- Complete Guide to Symbols and References
- Complete set of Load Tables for Typical Panel Configurations and Connector Types
- Typical Fastener Layout
- Warping Factor Development
- D-Values for Warping



DON'T DELAY—ORDER YOURS TODAY!

Send checks; postal, world money orders, drafts, in U.S. currency.

Quantity

_____ 2ND. EDITION DIAPHRAGM DESIGN MANUAL, \$45.00 ea.	_____
_____ 1st. Edition Diaphragm Design Manual, \$30.00 ea.	_____
_____ Steel Deck Design Manual, \$11.00 ea.	_____
US Currency Total	_____
Out of USA surcharge, 10%	_____
Add on for Airmail	_____
Total Enclosed	_____

STEEL DECK INSTITUTE, INC.

P.O. BOX 9506, CANTON, OHIO 44711 ■ (216) 493-7886

Metal Deck Products

Vulcraft

Steel roof and floor decks have long been recognized for their economy because of their light weight and high strength-to-weight ratio. They provide a durable and attractive roof or floor system for fast all-weather construction. Steel decks also provide excellent lateral diaphragm action thus reducing the necessity for structural bracing and their incombustible nature assures architects, engineers and owners of excellent fire ratings. Vulcraft offers a complete range of steel decking accurately roll formed in varying configurations.

For more information, contact: Vulcraft, P.O. Box 100520, Florence, SC 29501 (803) 662-0381.

Verti-Line

A new line of metal decking, roofing and wall panels that provide the combined benefits of excellent aesthetics, design versatility and ease of installation has been introduced by N.A.T. Industries, Inc. Unlike conventional profiled panels with trapezoidal ribbing, Verti-Line panel ribs are fabricated to 90 degree angles, resulting in clean crisp lines that create interesting architectural relief and shadow effects. The company can vary the width of the reveal and/or the top pan to desired dimensions.

For more information, contact: N.A.T. Industries, Inc., 14213 Whittram Ave., Fontana, CA 92335 (714) 355-1919.

United Steel Deck

United Steel Deck, Inc., produces a complete line of floor, roof, and form deck products. And now, because of the addition of new braking equipment, USD can manufacture special deck sections to solve unique problems. Recent examples include: a non-standard depth form deck to carry a heavy concrete pour without shoring; 1/4" plate formed into a ribbed heat shield; and a 12 gage canopy deck

with a special paint finish. Estimates are furnished upon request.

For more information, contact: Nicholas J. Bouras, Inc., P.O. Box 662, 475 Springfield Ave., Summit, NJ 07901 (908) 277-1617.



Curveline

Curved metal decking is the specialty of Curveline, Inc. For example, the company recently undertook a massive project for the new Virginia Air and Space Center and Hampton Roads History Center. An exposed metal decking system was curved to conform with massive arched trusses that ranged from 84' to 130' long and extended 120' into the air. The project included more than 800 "B" deck panels of 20 gage galvanized steel from Bowman Metal Deck that were "crimp-curved" by Curveline. The project was designed to look like the wings of a seagull in flight, and steel decking was chosen because of its weight advantage compared with concrete decking.

For more information, contact: Curveline, Inc., P.O. Box 4628, Ontario, CA 91761 (714) 947-6022.

Epic Metals

Epic Long Span Deck is combination roof and ceiling panel capable of spanning more than 30' between supports. The top surface is ready for standard rigid insulation and roofing, while the underside becomes a finished ceiling ready for decorator colors. The ceiling may be fluted (E) or flush (EP), plain, or perforated/arcaded for permanent acoustical treatment. The ceiling also may serve as a means of distributing hot/cold air,

M e t a l D e c k P r o d u c t s

electrical supply, radiant heat or recessed lighting. Depths vary from 4½" to 7½", with design thicknesses up to 14 gauge. The product features a unique side joint that locks panels together along their entire length. From below, the exposed surface presents a uniform ceiling with no irregular gaps.

For more information, contact: Robert Paul, Product Engineer, Epic Metals Corp., Eleven Talbot Ave., Rankin, PA 15104 (412) 351-3913.

Steel Deck Institute

An updated *Diaphragm Design Manual* is available from the Steel Deck Institute. This easy reference provides information on diaphragm strength, diaphragm stiffness, connections, concrete-filled diaphragms, fastener layout, and warping factor development. It also provides 62 pages of shear diaphragm examples and a complete guide to symbols and references. The Second Edition is available for

\$45, while the First Edition costs \$30 and the *Steel Deck Design Manual* costs \$11.

For more information, contact: Steel Deck Institute, P.O. Box 9506, Canton, OH 44711 (216) 493-7886.

Klemp Corporation

Riv-Dexsteel is a lightweight metal decking for roadways. Introduced almost 65 years ago, the product provides a maintenance-free roadway under the most adverse traffic conditions over long periods of time. The comparatively light weight of metal grating compared to other surfaces makes it ideal for movable bridges. Its light weight also frequently allows bridge widening without an appreciable increase in bridge weight. And it allows resurfacing to handle heavier loads without expensive substructure work. And it's ideal where flooding, snow buildup or icing is a potential problem since its openness helps reduce the pressure

normally exerted against a solid surface.

For more information, contact: Klemp Corp., 1132 W. Blackhawk St., Chicago, IL 60622.



It's good to have a choice . . .

Choose Experience

- Detailing expertise
- Engineering expertise
- Computer expertise
- Service expertise

Choose Solutions to

- Massive design revisions
- Fast track jobs
- Connection design responsibility
- Heavily architectural jobs
- Necessary shop optimization

Choose Variety

- Beams & Columns
- Connection Design
- Templates
- Ladder Systems
- Bracing
- Plate Work
- Pan and Grating Stairs
- Shop Management Reports
- Girt Walls and Door Frames

. . . it's GREAT to make the right one!

Make the profitable choice in Automated Detailing . . . choose PDS



Dogwood Technologies, Inc. 1900 Winston Road Suite 401 Knoxville, TN 37919
(615) 531-4073 (800) 346-0706

PDS Procedural
Detailing System

Advertisers' Index

A

AISC Manual of Steel Construction.....	10
American Iron and Steel Institute.....	8-9
American Punch	55
Arkansas Steel Processing, Inc.	21

B

Bethlehem Steel Corporation.....	48-49
Bouras, Nicolas J.	Cover II

C

Chaparral Steel.....	14
CNA Insurance	59
Computer Detailing.....	55
Computers & Structures.....	CIV
Conxprt.....	34

D

DCA Software (now Softdesk)	36
Design Data	17
Dogwood Technologies.....	61

E

ECOM.....	53
EJE Industries	23
EPIC Metals Corporation	CIII

I

Inorganic Coatings, Inc.....	12
------------------------------	----

L

Lukens Steel Co.....	28-29
----------------------	-------

M

MDX Software.....	39
-------------------	----

N

NSS Industries.....	45
---------------------	----

O

Omnitech.....	53
---------------	----

R

RAM Analysis	47
RISA	53
Research Engineers Inc.	7

S

St. Louis Screw & Bolt	16
Softdesk (formerly DCA Software)	36
Softtek.....	25
Steelcad International	58
Steel Deck Institute.....	60
Steel Solutions.....	31
Struct-Fast.....	31
Structural Analysis, Inc. (SAI).....	23
Structural Software	3
Structural Steel Association of New Jersey	37

T

TradeARBED, Inc.	5
-----------------------	---

U

U.S. Steel Group, a division of USX Corp.	43
--	----

V

Vulcraft	32-33
----------------	-------

W

W.A. Whitney	41
--------------------	----

For advertising information, contact:

Eric K. Nieman
 Pattis/3M
 7161 North Cicero
 Lincolnwood, IL 60646
 (708) 679-1100
 FAX (708) 679-5926

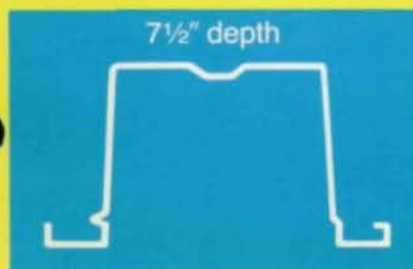
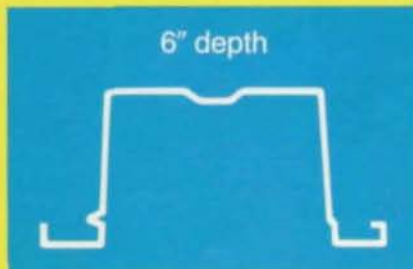
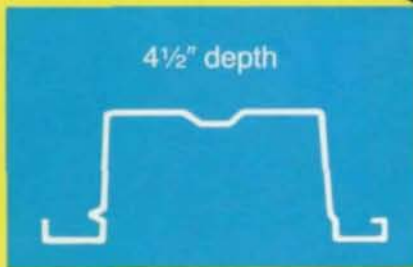
For advertising information in AK, AZ, CA, CO, HI, IA, ID, KS, MN, MT, ND, NE, NM, OK, OR, SD, UT, WA, and Canada contact:

Ed Sreniawski
 Pattis/3M
 7161 North Cicero
 Lincolnwood, IL 60646
 (708) 679-1100
 FAX (708) 679-5926

LONG-SPAN DECK

THERE'S AN EPIC DECK FOR EVERY SPAN

SCHOOLS
CANOPIES
AIRPORTS
CONVENTION CENTERS
STADIUMS
INSTITUTIONS
AUDITORIUMS
CHURCHES
SWIMMING POOLS
PRISONS
THEATRES



- Provide structural and ceiling material all in one architectural element

- Provides long spans without mid-span fastening

- Wide choice of depths and design thicknesses

- Ideally suited to any type construction

- Presents a uniform ceiling with no irregular gaps

- Design with our acoustical treatment to achieve state-of-the-art solutions to sound control

- Blend control—use acoustic and non-acoustic panels together

ECONOMY THROUGH SELECTION

- Roof Deck
- Plated Deck
- Composite Deck

MINIMUM MAINTENANCE

FAST ERECTION

THE CHOICE IS YOURS!

FOR INFORMATION, CONTACT

EPIC[®]
METALS CORPORATION

Eleven Talbot Avenue, Rankin PA 15104

PHONE: 412/351-3913

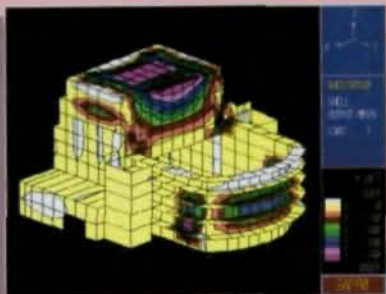
FAX: 412/351-2018

STATE OF THE ART

COMPUTER SOFTWARE FOR STRUCTURAL & EARTHQUAKE ENGINEERING

Developed by Edward L. Wilson & Ashraf Habibullah

CELEBRATING 21 YEARS OF INNOVATION
SAP90
1970-1991



Dynamic Analysis

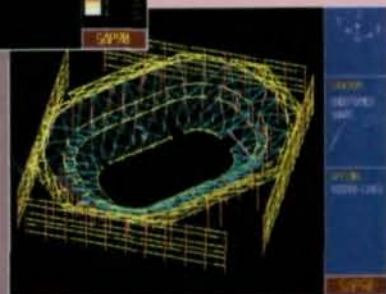


Highway Engineering

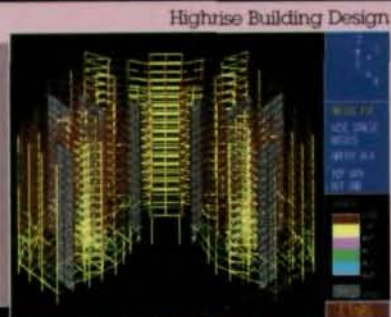


Shell Analysis

SAP90™
General Analysis & Design

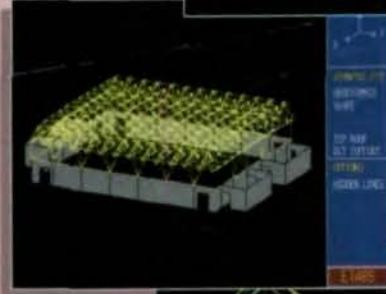


Complex Frame Analysis

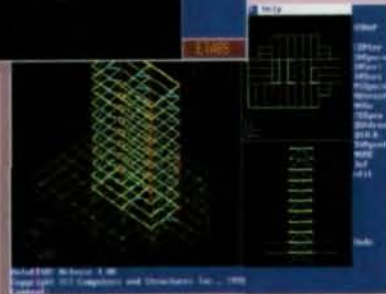


Highrise Building Design

Space Frame Design



ETABS®
Building Analysis & Design



Integration with CAD



For more information:

Computers & Structures, Inc.
1995 University Avenue
Berkeley, California 94704
TEL: (415)845-2177
FAX: (415) 845-4096
TWX: 5101003830 CSI BERKELEY

Foundation Mat Design



Flat Slab Design

SAFE™
Slab Analysis & Design