

MODERN STEEL CONSTRUCTION

November 1992

\$3.00



O'Hare People
Mover



UNITED STEEL DECK, INC. DECK DESIGN DATA SHEET

No. 18

TENSILE STRENGTH OF ARC PUDDLE WELDS - Wind Uplift Forces on Roof Deck



Steel	Ga.	(1) Visible Weld dia.				(2) Visible Weld dia.				(3) Visible Weld dia.			
		.5	.625	.75	1.0	.5	.625	.75	1.0	.5	.625	.75	1.0
A446 grade A*	22	230	300	360	480	440	560	680	930	160	210	250	340
Fy = 33 ksi	20	280	350	430	580	520	670	820	1120	200	250	300	410
Fu = 45 ksi	18	360	460	560	760	650	840	1040	1440	250	320	390	530
	16	440	570	690	940	730	1020	1270	1770	310	400	490	660
A446 grade C	22	280	360	440	590	530	690	840	1140	200	250	310	410
Fy = 40 ksi	20	340	430	520	710	630	810	1000	1360	240	300	370	500
Fu = 55 ksi	18	440	560	680	930	790	1030	1280	1760	310	390	480	650
	16	540	690	850	1150	730	1240	1550	2160	380	490	590	810
A446 grade D	22	310	390	480	640	580	750	910	1240	220	280	330	450
Fy = 50 ksi	20	370	470	570	770	690	890	1090	1490	260	330	400	540
Fu = 60 ksi	18	480	610	750	1010	860	1130	1390	1920	340	430	520	710
	16	590	760	920	1260	730	1350	1690	2360	410	530	650	880
A611 grade C*	22	250	310	380	510	470	600	730	990	170	220	270	360
Fy = 33 ksi	20	300	380	460	620	550	710	870	1190	210	260	320	430
Fu = 48 ksi	18	380	490	600	810	690	900	1110	1540	270	340	420	570
	16	470	610	740	1010	730	1080	1350	1890	330	420	520	710
A611 grade D	22	270	340	410	560	500	650	790	1080	190	240	290	390
Fy = 40 ksi	20	320	410	500	670	600	770	940	1290	230	290	350	470
Fu = 52 ksi	18	420	530	650	880	750	980	1210	1670	290	370	450	610
	16	510	660	800	1090	730	1170	1460	2040	360	460	560	760

* Roof deck is generally specified to meet ASTM A446 grade A (galvanized) or A611 grade C (painted).

(1) Single metal thickness values. (2) Double metal thickness values - end laps (3) Edge laps (at supports).

All table values are in pounds (tension) and are **design** values found by the formulas given in the AISI Specification for the Design of Cold-Formed Structural Members^(A); the safety factor is 2.5 but the 33% increase for wind loading has been included. The edge lap values (column 3) have been reduced by 30% to adjust for eccentric loading of the weld as recommended by Tensile Strength of Welded Connections^(B). AWS procedures for arc puddle welds are to be followed. A minimum electrode strength of 60 ksi is required.

(A) August 19, 1986, Edition with December 11, 1989 Addendum.

(B) R.A. LaBoube and Wei-Wen Yu, Department of Civil Engineering, Center for Cold Formed Steel Structures, University of Missouri--Rolla, Civil Engineering Study 91-3



NICHOLAS J. BOURAS, INC.

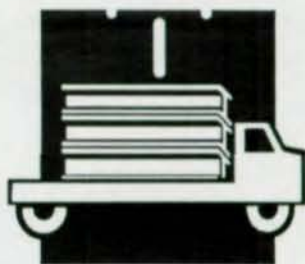
P.O. BOX 662, 475 SPRINGFIELD AVE.
SUMMIT, NEW JERSEY 07902-0662 (201) 277-1617



ASSOCIATE MEMBER

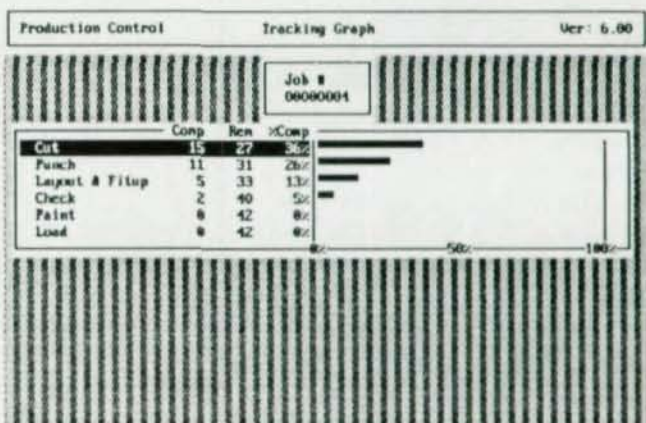
009003

• Production Control



New tracking system gives you unrivaled control over every piece in your shop, every step of the way

How would you like to be able to punch a few keys on your computer and get instant, detailed tracking reports on the status of individual pieces or entire jobs in your shop? That's exactly what Structural Software's new Production Control Tracking System can do for you. Tracking graphs, shipping tickets, loading reports and other status reports show what shop stations a piece passed through on what date, who did the work, how many manhours the work took and what still needs to be done to that piece. The new tracking system gives you the power to see exactly what shop work remains to finish a given piece mark, sequence or job. Sorted lists show individual piece weights, assembly weights, even weight of all steel on a drawing. Production Control interfaces with our Purchase Orders program to generate cutting lists that give you the added capability of tracking material from the time it's ordered to the time it's cut. The cutting lists show shop employees exactly which pieces to pull, which pieces to cut from them and which pieces to scrap or return to inventory. Production Control also works with our new Combining program to optimize your material cutting for even more savings.



Bar graphs show the number and percentage of completion on any given piece mark, sequence or job



STRUCTURAL SOFTWARE CO.
SOFTWARE FOR THE STEEL INDUSTRY

P.O. Box 19220, 5012 Plantation Road,
Roanoke, VA 24019

Do you buy material from Nucor-Yamato Steel?

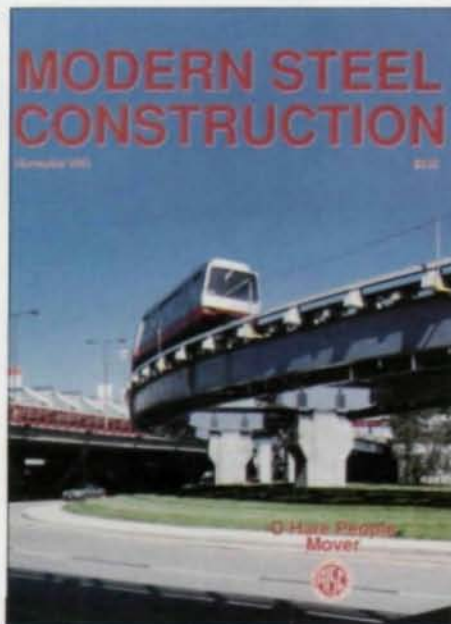
Call about our new Combining program that optimizes material using Nucor's bundling or cut-to-length restrictions.

(800) 776-9118

MODERN STEEL CONSTRUCTION

Volume 32, Number 11

November 1992



A new 2.71-mile automated transit system for O'Hare International Airport will transport passengers between terminals and to remote parking areas. Read about this intriguing project beginning on page 16.

FEATURES

- 16 PEOPLE MOVER FLIES ON WINGS OF STEEL
Wing-shaped crossheads minimize the depth of the supporting structure for a new transportation system at Chicago's O'Hare International Airport
- 24 HILLTOP CROWN
A new county building's semi-circular shape allows room for a future addition
- 30 BASEBALL'S PAST REVISITED
While nostalgia played a part in choosing steel for Baltimore's new stadium, economics also was an important consideration
- 33 STRUCTURAL CONSIDERATION AT CAMDEN YARDS
The design of a new baseball stadium included numerous cantilevers as well the renovation of an old brick warehouse
- 38 SWITCH TO STEEL SAVES \$1 MILLION
Redesigning a mixed-use project speeded construction and substantially reduced construction costs

Modern Steel Construction (Volume 32, Number 11). ISSN 0026-8445. Published monthly by the American Institute of Steel Construction, Inc. (AISC), One East Wacker Dr., Suite 3100, Chicago, IL 60601-2001.

Advertising office: Pattis/3M, 7161 North Cicero, Lincolnwood, IL 60646.

Subscription price:
Within the U.S.—single issues \$3; 1 year \$30; 3 years \$85.
Outside the U.S.—single issues \$5; 1 year \$36; 3 years \$100.

Postmaster: Please send address changes to Modern Steel Construction, One East Wacker Dr., Suite 3100, Chicago, IL 60601-2001.

Second-class postage paid at Chicago, IL and at additional mailing offices.

NEWS AND DEPARTMENTS

- 6 EDITORIAL
- 9 STEEL INTERCHANGE
 - Bolt Holes
 - End Plate Moment Connections
- 12 STEEL NEWS
 - AISC introduces electronic LRFD Specification
 - Bridge calendar now available
- 13 STEEL CALENDAR
- 41 PRODUCTS
- 42 STEEL MARKETPLACE



HISTAR [®] 

**A new generation
of rolled beams
and column shapes
for economical
steel construction.**

Once again, ARBED leads the industry by featuring a trendsetting combination of mechanical, chemical and technological properties:

- HIGH YIELD STRENGTHS (up to 65 KSI) - even for ultra-heavy sections.
- OUTSTANDING TOUGHNESS PROPERTIES.
- EXTREMELY LOW CARBON EQUIVALENT — ensures excellent weldability.

A NEW PROCESS... QST.

The secret is in ARBED's revolutionary new in-line QST process.

OTHER RECENT ARBED INNOVATIONS:

ARBED-ROLLED 40", 44", and "TAILOR-MADE" (WTM) series — famous for high section moduli, great lateral buckling resistance, and big savings in fabrication costs and weights. These products are also available in the new HISTAR quality as is our standard WF series and H BEARING PILES.

NEW LITERATURE AVAILABLE

Send now for complete data on all these ARBED products, contact Trade ARBED, INC., 825 Third Ave., New York, NY 10022. (212) 486-9890, FAX 212-355-2159/2421. In Canada: TradeARBED Canada, Inc., 3340 Mainway, Burlington, Ontario, Canada L7M 1A7. (416) 335-5710, FAX 416-335-1292.

TRADE ARBED Inc.

INNOVATORS OF STEEL CONSTRUCTION PRODUCTS.

Editorial Staff

Scott Melnick,
Editor and Publisher
Patrick M. Newman, P.E.,
Senior Technical Advisor
Charlie Carter,
Technical Advisor

Editorial Offices

Modern Steel Construction
One East Wacker Dr.
Suite 3100
Chicago, IL 60601-2001
(312) 670-5407

Advertising Sales

Pattis-3M
7161 North Cicero
Lincolnwood, IL 60646
(708) 679-1100
FAX (708) 679-5926

AISC Officers

Stephen E. Egger,
Chairman
Frank B. Wylie, III,
First Vice Chairman
Robert E. Owen,
Second Vice Chairman
Robert H. Woolf,
Treasurer
Neil W. Zundel,
President
David Ratterman,
Secretary & General Counsel
Lewis Brunner,
Vice President,
Membership Services
Geerhard Haaijer,
Vice President,
Technology & Research
Morris Caminer,
Vice President,
Finance / Administration

Fortunately, Unfortunately*

I was right on deadline. Fortunately, all I needed to complete the issue was to confirm a company's address.

There was a time when this would have been incredibly simple. I would have picked up the phone, called my contact at the company, and asked whoever answered the phone for their correct mailing address. Unfortunately, this call was answered by the dreaded Voice Mail system.

The recording said I could leave a message, or, if I needed to speak to someone, I could press the pound key and dial a specific extension to reach my party's secretary. Fortunately, the information I needed was simple and could be provided by anyone.

I pressed the pound key and dialed the extension. Unfortunately, the secretary also wasn't available.

Fortunately, the Voice Mail system told me I could stay on the line and an operator would take the call shortly.

I waited 30 seconds. I waited 90 seconds. I waited 540 seconds. Unfortunately, an operator never picked up.

I finally hung up and dialed information to get the company's main phone number. Fortunately, the phone company always answers their phone.

I called the main number. Unfortunately, this particular company also uses Voice Mail to answer their main switchboard.

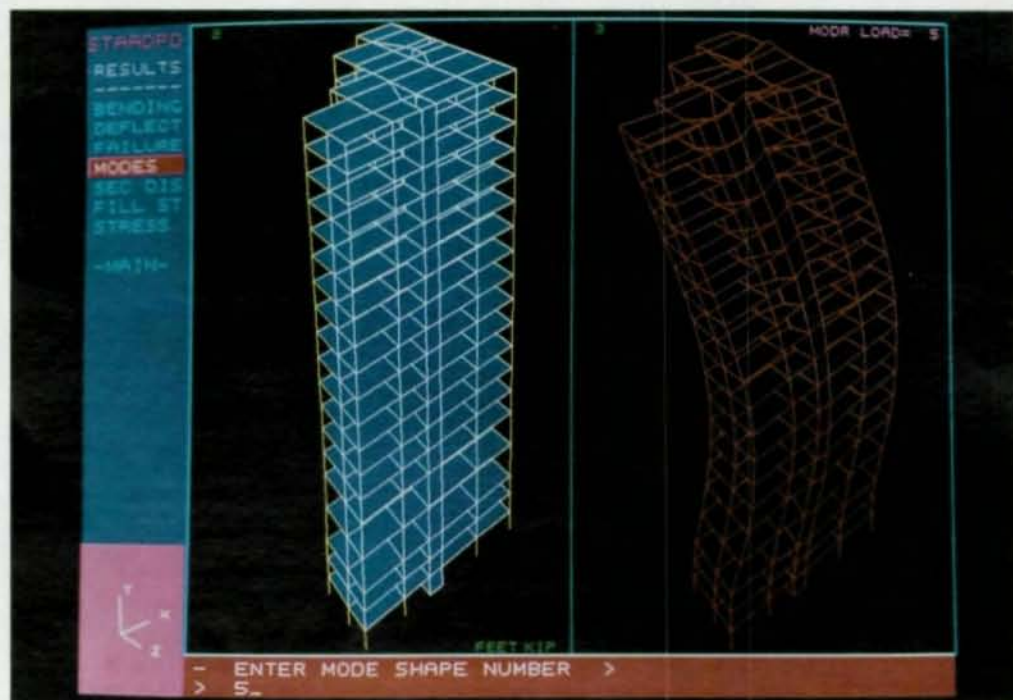
After several more phone calls, I did, fortunately, receive the needed information.

Unfortunately, if I had been a customer calling to place an order or inquire about a product, I probably wouldn't have been so persistent. There are easier ways to do business.

Fortunately, there is a simple solution. Next time you're out with a friend, ask him (or her) to call the office pretending to be a client. Listen in on the call. Find out whether you'd want to be a client or customer of your own company. **SM**

**With apologies to Remy Charlip and the classic children's book, Fortunately.*

STAAD-III/ISDS - Ranks #1 in Earthquake Engineering



A recent (October, 1990) ENR/McGraw Hill survey of the Architecture/Engineering/Construction industry ranks STAAD-III/ISDS, from Research Engineers, as the #1 structural engineering software today.

Whether it is a single beam or analysis of a 3D multistory structure for seismic response, STAAD-III/ISDS has been the engineer's # 1 choice - since 1978.

Today, Research Engineers, with six offices on four continents, is making the world's knowledge available to the industry - with continuous implementation of the latest technology.

State-of-the-art dynamic/earthquake engineering facilities include the world's fastest and most accurate eigensolution algorithm, response spectrum capabilities with SRSS and CQC modal combinations, numerically efficient plate finite element to model shear walls and rigid diaphragms, automatic generation of UBC loading, static/animated mode shape plots, direct combination of static/dynamic analysis results with fully integrated implementation of STEEL/CONCRETE/TIMBER Design based on American and ten other Foreign Codes.

STAAD-III/ISDS - #1 For a Reason.

Also introducing AutoSTAAD - structural drafting, model generation and STEEL/CONCRETE/TIMBER detailing within AutoCAD.



STAAD-III



CIVILSOFT

**Research
Engineers**

A reputation you can build on.

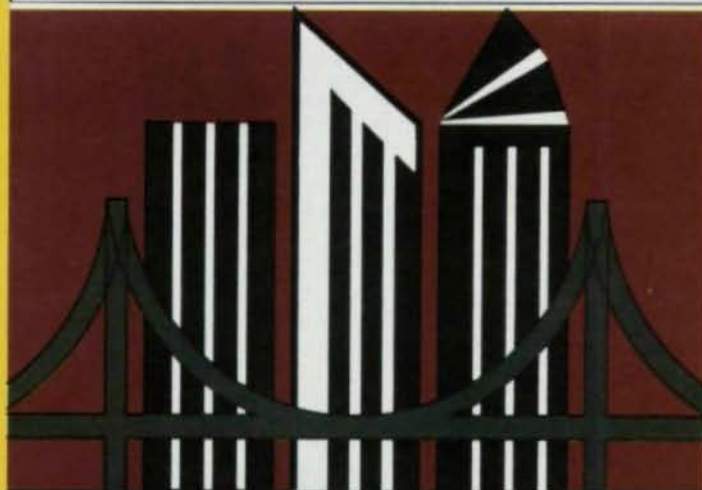
For Information, call 1-800-FOR-RESE
1570 N Batavia Street, Orange, CA 92667
Phone: (714) 974-2500 Fax: (714) 974-4771

RESEARCH ENGINEERS WORLDWIDE

UK: Research Engineers (Europe) Ltd., 19 Lansdowne Court, Brighton Road, Purley Surrey CR8 2BD Phone: (081) 763-1393 Fax: (081) 763-1379 Telex: 929181
FRANCE: Research Engineers, 18 rue de Moresville, 28800 FLACEY Phone: 37 47 51 63 Fax: 37 47 44 63
GERMANY: Research Engineers, Wilhelm-Busch-Str. 23, 6140 BENSHEIM 3 AUERBACH Phone: 06251 79577 Fax: 06251 75437
INDIA: Research Engineers Pvt. Ltd., 40B Darga Road, Calcutta 700 017, Phone: 448914 Telex: 214102

NATIONAL STEEL CONSTRUCTION CONFERENCE

THE ONLY "ALL-STEEL" CONFERENCE
AND TRADE SHOW IN THE U.S.



MARCH 17-19, 1993

ORANGE COUNTY CONVENTION/CIVIC CENTER
ORLANDO, FLORIDA

AT NO OTHER MEETING will you receive more information about the design and construction of fabricated structural steel. The NSCC addresses all aspects of steel construction from concept to completion: computerized design; codes and specifications; research; shop and project management; inspection and safety; and fabrication and erection procedures. More than 100 exhibitors showcase products and services to the structural steel industry at the trade show.

MORE THAN 40 SESSION TOPICS INCLUDE:

- Mill practices
- Steel bridge rehabilitation
- Welding symbols
- Steel seismic design
- Construction automation
- Industrial buildings
- Managing subcontract detailing
- Exposed structural steel
- OSHA review of construction accidents
- Building and motivating a productive workforce
- Fire restoration and protection
- And many, many more!

EDUCATION: The more than 40 technical seminars will educate & inform you. **VALUE:** Attending the NSCC will save you money and time in the future. Everything you learn at the NSCC is "take-home" knowledge to be shared with your colleagues and used to improve your business. **NETWORKING:** Meeting and mingling with your peers can create future business opportunities. **STATE-OF-THE-ART:** By attending the NSCC, you'll be "up-to-speed" on new services and products in the structural steel construction industry. **FUN, OF COURSE:** The family fun in Orlando makes it a top choice of travelers. Along with spouse & optional events and tours, see the famous Walt Disney World, The Magic Kingdom, EPCOT Center, Sea World & the natural glories of Cypress Gardens.

STEEL
STANDS FOR THE FUTURE



SPONSORED BY
American Institute
of Steel Construction, Inc.

CO-SPONSORED BY
American Institute for Hollow
Structural Sections

American Iron and Steel
Institute

American Welding Society

Canadian Institute of Steel
Construction

Mexican Institute of Steel
Construction

Steel Deck Institute

Steel Joist Institute

Steel Service Center Institute

Steel Structures Painting
Council

For registration or exhibiting information,
call AISC at 312/670-2400, or write:

American Institute
of Steel Construction, Inc.
One E. Wacker Dr., Suite 3100,
Chicago, IL 60601-2001

FAX 312/670-5403

Steel Interchange

Steel Interchange is an open forum for *Modern Steel Construction* readers to exchange useful and practical professional ideas and information on all phases of steel building and bridge construction. Opinions and suggestions are welcome on any subject covered in this magazine. If you have a question or problem that your fellow readers might help to solve, please forward it to *Modern Steel Construction*. At the same time feel free to respond to any of the questions that you have read here. Please send them to:

Steel Interchange
Modern Steel Construction
1 East Wacker Dr.
Suite 3100
Chicago, IL 60601

The following responses to questions from previous Steel Interchange columns have been received:

An oddity exists when comparing $0.4F_y$ versus $0.3F_u$ shear stress values. The ratio of F_y to F_u for A36 and A572 Gr. 50 steel is not proportional. For applications based on $F_v = 0.4F_y$, the allowable shear stress for A572 Gr. 50 is 39% greater than A36 steel; however, for applications based on $F_v = 0.3F_u$, the allowable stress is only 12% greater for the A572 Gr. 50 Steel. For A36 steel there is an increase in going from $0.4F_y$ to $0.3F_u$. For A572 Gr. 50 there is a decrease.

a) When a single round hole penetration is required in a beam web, is it proper to use $F_v = 0.4F_y$ or $F_v = 0.3F_u$ when calculating shear capacity?

b) Would a row of bolt holes behave differently than one large round hole which resulted in the same net area?

c) Does the presence or absence of bolts in holes affect the shear capacity of the member?

Mr. Ricker has identified one of the oddities that occurs in the AISC Specifications when more than one limit state (yielding and fracture) must be satisfied. In addition, Ricker also seeks clarification between bolt holes and beams with web openings. Because the inquiry is discussed in allowable stress terms, the response will be based on the June 1, 1989 AISC ASD Specification. The same condition exists in the September 1, 1986 LRFD Specification.

Equation F4-1 ($0.4F_y$) is the limiting stress allowed on the beams gross section to prevent yielding whereas Equation J4-1 ($0.3F_u$) is the limiting stress along the net section that will prevent fracture from occurring through the bolt holes. As Ricker indicates, as the yield stresses increases or the ratio of tensile stress to yield stress decreases (F_u/F_y) the controlling limit state will change from yielding to fracture. Whether this is considered an oddity or a design consideration based on differing limit states is subjective based on the individual engineer's perception. With the preceding information identified the answers to Ricker's three questions are as follow:

a) If one assumes that the hole is of the size intended for a bolted connection ($d_b = 1\frac{1}{2}$ in.) then both Sections F4 and J4 must be checked and the one giving

Answers and/or questions should be typewritten and double spaced. Submittals that have been prepared by word-processing are appreciated on computer diskette (either as a wordperfect file or in ASCII format).

The opinions expressed in *Steel Interchange* do not necessarily represent an official position of the American Institute of Steel Construction, Inc. It is recognized that the design of structures is within the scope and expertise of a competent licensed structural engineer, architect or other licensed professional for the application of principles to a particular structure.

Information on ordering AISC publications mentioned in this article can be obtained by calling AISC at 312/670-2400 ext. 433.

the lower answer governs. Larger diameter holes suggest a web penetration for an electrical/mechanical duct which should be checked using the provisions of the AISC publication *Steel and Composite Beams with Web Openings*. In my opinion if the diameter of the hole is less than $\frac{1}{3}$ of the beam depth, then web opening provisions are unlikely to govern, and the two limit states identified earlier must be checked. As the hole increases in size the web opening provisions and Equation F4-1 must be checked to determine the governing condition.

b) Because bolt spacing is usually three times the bolt diameter (minimum three inches) the maximum material removed by a row of holes is less than $\frac{1}{3}$ the beam depth. Under these conditions it is unlikely that there will be any behavioral differences whether there is several holes or one hole whose diameter equals the sum of the individual bolt hole diameters.

c) There have been bolted connection tests indicating that initially there is some variations in connection behavior due to the clamping effect of high strength bolts. However, as the applied load increases and the tightened bolts become loose the difference in behavior is largely undetectable. This suggests that the presence or absence of bolts will not affect the shear capacity of a beam web.

R. H. R. Tide

Wiss, Janney, Elstner Associates, Inc.
Northbrook, IL

The AISC design procedure for end-plate moment connections is for static loading only. Can this connection be used for a utility bridge that has wind loading? Can it be used on a frame that supports a crane runway?

In AISC Design Guide Series No. 4, Extended End-Plate Moment Connections, Chapter 2 - Recommended Design Procedures, only static loading is permitted. However, static loading as it states, includes wind, temperature, and snow. Therefore, the utility bridge subjected to wind loading would qualify as a statically loaded structure and could utilize extended end-plate moment connections. The frame supporting the crane runway may experience many more loading cycles than could be considered as static and should be designed with fatigue in mind.

Craig A. Malony, P.E.
Ballston Spa, NY

Steel Interchange

I have read the July 1992 issue of MSC and find an extremely disturbing anomaly. In response to a query in *Steel Interchange*, "what is a good wind connection for the top of a column," two engineers responded with suggested details. In the same issue, Mr. William McGuire has an article cautioning engineers of the dangers of using prepared material without adequate understanding of the behavior of the structure.

I must agree with Mr. McGuire. The only satisfactory answer to the question asked is: "one that satisfies all of the requirements and costs as little as possible." Another response may lead to inappropriate use of a standard which can easily be done when proper informed thought has not been given to a design.

William J. Gladstone
Consulting Engineer
Manhasset, NY

The AISC design procedure for end-plate moment connections is for static loading only. (See LRFD Manual, 1st Edition, p. 5-143 and ASD Manual, 9th Edition, p. 4-116) Why is this restriction made?

In response to Barry K. Shriver's question regarding the AISC design procedure for end-plate moment connections, I offer the following:

While a designer may be tempted to use the AISC design procedure for end-plate moment connections for any loading combination, a closer examination of the procedure indicates that no provisions for fatigue loading are included. Indeed, repeated loading and unloading even if the yield point is never reached may result in the eventual failure of this connection as a result of fatigue. The procedure apparently considers this possibility by stipulating that the design procedure is only valid for static loading conditions.

The main factors governing fatigue strength are the applied stress, the number of expected loading cycles, the type of detail, and the load path redundancy of the overall structural system. Fatigue need not be considered for a number of cycles less than 20,000 which corresponds to two applications every day for 25 years. Obviously wind loading is not fatigue loading and can be considered a static loading. This leaves high cycle fatigue such as in crane girders, and alternating plasticity as in high seismic regions as areas of concern.

When the beam web and flanges are connected to the end plate by fillet welds, the stresses in the welds are considered to be shear stresses so that the detail is classified as Category F. The allowable stress range in shear is 12 ksi for 500,000 loading cycles (50 applications every day for 25 years). If the beam is connected by full penetration groove welds the detail is Category C for which the allowable stress range in the base material is 21 ksi for 500,000 cycles for the thickness of the flanges and web not greater than 1½ in.

These factors are crucial to the proper design of

this type of connection. In the case of Example 39 (9th Edition page 4-120), the designed flange to end-plate connection results in an allowable fatigue stress range of 5.88 ksi for a non-redundant system expecting 500,000 load cycles. Since this example does not differentiate between dead load (static load) and live load (dynamic load), it is impossible to determine if the dynamic stress range will exceed this limit. However as this example clearly illustrates, dynamic loading considerations may well govern the design.

A great deal of judgement is required in determining whether or not dynamic loading will govern the design. It can generally be anticipated that under normal wind loading, fatigue will not be a governing factor. On the other hand, the design of a crane support system may indeed be governed by fatigue. While general assumptions can be made about the type of structure, these assumptions should not replace good sound engineering principles. The AISC design detail outlined in the ASD Manual on pg. 4-116 is useful in performing preliminary designs for structures expecting relatively small stress ranges and a low number of load cycles (less than 20,000). Where this is not the case, an estimation of fatigue strength should be included in the preliminary design. In either case, the consideration of dynamic loading (in conjunction with load path redundancy) should be included in the final design of any structure. Where a high number of cycles and/or a large stress range is expected—as with a vehicular bridge—serious consideration should be given to using bolted connections in lieu of welding.

Daniel G. Faust, P.E.
Ammann & Whitney, Inc.
Philadelphia, PA

New Questions

Listed below are some questions that we would like the readers to answer or discuss. If you have an answer or suggestion please send it to the Steel Interchange Editor. Questions and responses will be printed in future editions of Steel Interchange. Also, if you have a question or problem that readers might help solve, send these to the Steel Interchange Editor.

I am interested in reference sources that address the design of "curved" beams (supporting members rolled to a radius) frequently encountered at the perimeter of buildings, canopies, etc. as well as highway bridges and overpasses. Sources dealing with hot rolled (WF, C, L, etc.) sections are preferred, although any information regarding built-up members would also be appreciated.

Charles E. Plessner, P.E.
Mound Steel Corp.
Springboro, OH

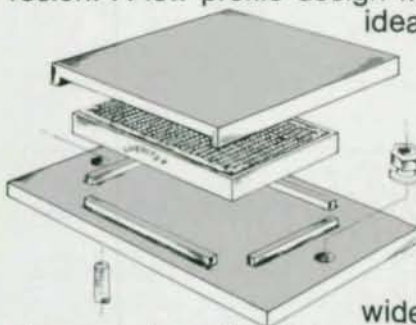
Correction: The limit in the last paragraph of Don Sherman's response in the September, 1992 Steel Interchange should read $253/\sqrt{F_y}$.

The future of your bridge rides on the bearings you select.

When you think rehab, think Lubrite.

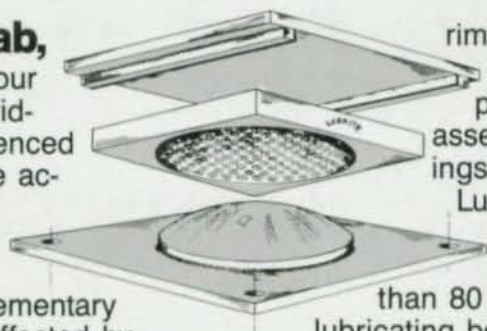
So both your bridge and reputation will be riding on the world's most experienced self-lubricating bearing. Lubrite accommodates expansion, contraction and rotation of structural members — and does it without maintenance or supplementary lubrication. Lubrite is also unaffected by temperature extremes, immersion and/or corrosion. A low profile design makes Lubrite

ideal for bridge rehabilitation work, since it minimizes the need for elevation adjustment, a common problem with many bearings. A



wide variety of designs, such as the Spherilube®, Radialube®, and flat plate versions shown in the accompanying illustrations are available. All bridge bearings can be supplied in standard Lubrite or Lubrite F. The Lubrite F 100% teflon fiber mat offers a very low .03 coefficient of friction.

When you work with Merriman, you can also assign total responsibility to one supplier. Mer-



riman's 200,000 square foot manufacturing facility regularly supplies a wide variety of completed assemblies along with Lubrite bearings. If you need design assistance, Lubrite's highly experienced engineering staff can be of help.

This group is backed by more than 80 years of experience in the self-lubricating bearing field, and has worked on many of the world's largest bridges. Last but not least, Merriman's manufacturing facility assures you of the quick turn-arounds frequently required in bridge rehabilitation work.

For additional information call or write Merriman,

100 Industrial Park Road, Hingham, MA
02043 (617) 749-5100 Telex 94-0246.

WRITE FOR NEW CATALOG.



MERRIMAN

Lubrite. The world's most experienced bearing.

IT'S HERE!
A Brand NEW
Publication
For Safe
Construction
Practice in
Steel Floor
and Roof Deck
Installation



SDI MANUAL OF CONSTRUCTION WITH STEEL DECK



"SDI MANUAL OF CONSTRUCTION WITH STEEL DECK"

is a new and complete guide to safe construction. It covers responsibilities for Design, Specification, Bundling, Loading, Unloading, Hoisting, Placing, Attaching, Placement of Construction Loads. It serves as a safety primer for Contractors, Erectors, Architects, Engineers and Inspectors who are responsible for safe and proper field installation of Steel Deck.

PRACTICAL...
EASY TO READ...
EASY TO FOLLOW...
EASY TO TAKE TO THE JOBSITE...

BRAND NEW - FIRST PRINTING
SDI MANUAL OF CONSTRUCTION
WITH STEEL DECK - No. MCD1

Quantity @ \$18.75 each

U.S. Currency Total

Out of Continental U.S. Add 15%

Call SDI for Special Shipping such as Express Mail, Air Mail, etc. - additional

TOTAL ENCLOSED

NAME

ADDRESS

CITY

STATE ZIP

ALLOW 3 TO 4 WEEKS FOR DELIVERY

See Ad On Page 42

STEEL DECK INSTITUTE

P.O. Box 9506 Canton, Ohio 44711 (216) 493-7886

S T E E L N E W S

AISC Introduces Electronic LRFD Specification

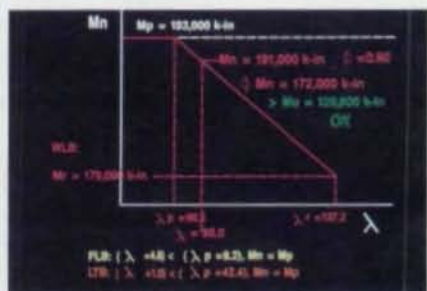
AISC is now selling ELRFD, the official electronic version of the LRFD Specification. This sophisticated computer program interactively checks structural steel building components for compliance with the Specification. All provisions of the LRFD Specification are included in the knowledge base of ELRFD, except Chapter I (Composite Members) and Chapter J (Connections).

The ELRFD program checks whether the member satisfies all limit states and limitation requirements set by the LRFD Specification and reports which sections of the Specification are satisfied or violated. Designers can review in detail the formulas and rules in the evaluation and interactively assess any mathematical expression appearing on the screen. Design data produced by the software can be viewed and/or printed in report form for permanent record.

"The program can be used to do sophisticated checking or reviews of designs," explained Abraham J. Rokach, P.E., a senior staff engineer with AISC. "It verifies any steel member from a simple beam to a complex plate girder."

ELRFD was developed jointly by AISC and Visual Edge Software, Ltd., of Quebec, Canada. It is based on research supported by the National Science Foundation. Contributing to the project at various stages have been Profs. Steven J. Fennes and James H. Garrett, Jr. (Carnegie Mellon) and William McGuire (Cornell), as well as members of an ad hoc task group of the AISC Committee on Specifications.

ELRFD has a fully interactive window-based user interface. It runs under Microsoft (MS) Windows 2.0 or higher with MS DOS 3.0 or higher. Hardware requirements are an IBM-compatible personal computer (386 or higher recommended) with a minimum of 2 meg of RAM, a hard disk, a mono-



Parameter	Value
phi	0.9
Mn	121,500
Mp	172,000
Mu	120,200
lambda	0.87
lambda_p	0.87
lambda_c	0.87
lambda_s	0.87
lambda_t	0.87
lambda_b	0.87
lambda_l	0.87
lambda_r	0.87
lambda_w	0.87
lambda_m	0.87
lambda_n	0.87
lambda_o	0.87
lambda_p	0.87
lambda_q	0.87
lambda_r	0.87
lambda_s	0.87
lambda_t	0.87
lambda_u	0.87
lambda_v	0.87
lambda_w	0.87
lambda_x	0.87
lambda_y	0.87
lambda_z	0.87
lambda_aa	0.87
lambda_ab	0.87
lambda_ac	0.87
lambda_ad	0.87
lambda_ae	0.87
lambda_af	0.87
lambda_ag	0.87
lambda_ah	0.87
lambda_ai	0.87
lambda_aj	0.87
lambda_ak	0.87
lambda_al	0.87
lambda_am	0.87
lambda_an	0.87
lambda_ao	0.87
lambda_ap	0.87
lambda_aq	0.87
lambda_ar	0.87
lambda_as	0.87
lambda_at	0.87
lambda_au	0.87
lambda_av	0.87
lambda_aw	0.87
lambda_ax	0.87
lambda_ay	0.87
lambda_az	0.87
lambda_aa	0.87
lambda_ab	0.87
lambda_ac	0.87
lambda_ad	0.87
lambda_ae	0.87
lambda_af	0.87
lambda_ag	0.87
lambda_ah	0.87
lambda_ai	0.87
lambda_aj	0.87
lambda_ak	0.87
lambda_al	0.87
lambda_am	0.87
lambda_an	0.87
lambda_ao	0.87
lambda_ap	0.87
lambda_aq	0.87
lambda_ar	0.87
lambda_as	0.87
lambda_at	0.87
lambda_au	0.87
lambda_av	0.87
lambda_aw	0.87
lambda_ax	0.87
lambda_ay	0.87
lambda_az	0.87
lambda_aa	0.87
lambda_ab	0.87
lambda_ac	0.87
lambda_ad	0.87
lambda_ae	0.87
lambda_af	0.87
lambda_ag	0.87
lambda_ah	0.87
lambda_ai	0.87
lambda_aj	0.87
lambda_ak	0.87
lambda_al	0.87
lambda_am	0.87
lambda_an	0.87
lambda_ao	0.87
lambda_ap	0.87
lambda_aq	0.87
lambda_ar	0.87
lambda_as	0.87
lambda_at	0.87
lambda_au	0.87
lambda_av	0.87
lambda_aw	0.87
lambda_ax	0.87
lambda_ay	0.87
lambda_az	0.87

chrome or color monitor, and a mouse compatible with MS Windows. A printer is recommended but not required.

Included in the ELRFD package are a 3½" diskettes containing ELRFD Checker/Browser, the AISC Structural Shapes Database, and example problems and two manuals (the User's Guide and Reference Manual). Three installations are permitted; the cost of a license is \$495.

To order ELRFD or to obtain more information, contact: AISC Software Sales; phone 312/670-5411; fax 312/670-5403. Payment by credit card is accepted.

Bridge Calendar

Bridges 93, a new calendar from the American Society of Civil Engineers, features photographs taken by Eric N. DeLony of the National Park Service. The bridges selected include both historic and state-of-the-art technology. The calendar is available for \$8.95 from ASCE Sales & Marketing (SW-16), 345 E. 47th St., New York, NY 10017-2398 (212) 705-7276.

November 2. **Structural Steel Concepts: Restraint Girder System**, New York City. A presentation by Neil Wexler, P.E., will describe his use of systems featuring precast concrete plank with composite steel girders, hung beam to girder connections, composite open web joist, and partially restrained connections. Contact: Steel Institute of New York (212) 697-5553.

November 10-11. **CADD Seminars**, Atlanta. Topics include: implementation & management; developing CADD standards; automating the design office; A/E CADD management; linking computers; and training & staffing for CADD. Contact: Sharon Price, A/E/C Systems (800) 451-1196. Contact: Sharon Price, A/E/C Systems (800) 451-1196.

November 10-11. **Welding Structural Design two-day seminar**, Atlanta. Designed to provide engineers and welding inspectors a greater understanding of weld mechanics and welded engineering structures. Contact: AWS, 550 N.W. LeJeune Road, P.O.

Box 351040, Miami, FL 33135 (800) 443-9353. November 10-12. **Fourth Biennial Symposium on Movable Bridges**, Ft. Lauderdale, FL. More than 40 sessions on various aspects of moveable bridges. Contact: Andrew W. Herrmann at (904) 575-1970.

November 11. **Eccentric-Braced Frame Technology**, breakfast meeting. Overview presentation including how to use EBF in non-seismic areas. Denver. Contact: Jim Anders (214) 369-0664.

November 12-13. **CADD Seminars**, Chicago. (See November 10-11.) Contact: Sharon Price, A/E/C Systems (800) 451-1196.

November 14-19. **SSPC 92**, Kansas City. Nine seminars (40-50 papers), 14 tutorials, and 32 technical committee meetings, plus an extensive product exhibition on steel coatings and paint. Contact: Steel Structures Painting Council, 4400 Fifth Ave., Pittsburgh, PA 15213-2693 (412) 268-2980.

December 3. **Structural Welding Design For Buildings**, New York City. One day seminar discussing the design of shear, moment, splice and other structural connections, AISC and AWS specification requirements, and other welding issues. Contact: Robert E. Shaw, Jr., Steel Structures Technology Center, (313) 344-2910.

December 6-9. **First World Conference On Constructional Steel Design**, Acapulco, Guerrero, Mexico. (Official conference language is English.) Topics include: Element Behavior & Design; Seismic Design; Composite Structures; Connection Design; and Plate & Box Girders. Contact: Gill Spear, CSD'92 Conference Secretariat Department, Elsevier Science Publishers, Ltd., Mayfield House, 256 Branbury Road, Oxford OX2 7DH, United Kingdom; fax 44 865 310981.

December 7-8. **Central Fabricators Meeting, Union League Club**, Chicago. General topic: engineering and detailing. Contact: LaVerne Duckrow, 7227 W. 127th St., Palos Hills, IL 60463 (708) 361-2338.

Tubular Sections In Building Construction. Breakfast meeting. Discussion includes: design criteria; Type 2 connections; tube-to-tube connections; design guides; practical recommendations; and application examples. Contact: Colleen Hays, AISC Marketing, Inc. (312) 670-2400 ext. 203.

- Jacksonville, FLNovember 3
- OrlandoNovember 4
- TampaNovember 5
- CincinnatiNovember 10
- Cocoa Beach, FLNovember 17
- New OrleansNovember 17
- Boca Raton, FLNovember 18
- MiamiNovember 19

Eccentric-Braced Frame Technology. Breakfast meeting. Discussion includes EBFs for both seismic and non-seismic applications. Contact: Colleen Hays, AISC Marketing, Inc. (312) 670-2400 ext. 203.

- Wichita, KSNovember 10
- DenverNovember 11
- New OrleansNovember 17

Steel Buildings: Special Inspection. One-day seminar. Contact: Robert E. Shaw, Jr., Steel Structures Technology Center, (313) 344-2910.

- PortlandNovember 30
- BostonDecember 1
- Cromwell, CTDecember 2
- Hasbrouck Heights, NJDecember 4

1993 AISC Lecture Series: New Ideas In Steel Construction. Seminar covers four topics: low-rise construction; *Manual Of Steel Construction, Volume II* (Connections); eccentrically-braced frames; and Partially-Restrained Connections. Contact: Robert Lorenz, AISC, One East Wacker Dr., Suite 3100, Chicago, IL 60601-2001 (312) 670-5406.

West

- San DiegoFebruary 18
- SeattleMarch 30
- Los AngelesMay 6
- IrvineJune 10
- SacramentoJune 22
- San FranciscoJune 24

Southwest

- New OrleansFebruary 2
- AlbuquerqueFebruary 4
- HoustonFebruary 16
- DenverApril 1
- Kansas CityApril 15
- DallasMay 4
- San AntonioJune 8

Midwest

- ChicagoMarch 4
- St. LouisApril 13
- DetroitMay 11
- MinneapolisMay 25
- MilwaukeeMay 27
- IndianapolisOctober 19

South

- ColumbiaApril 20
- CharlotteApril 21
- GreenvilleApril 22
- BirminghamSeptember 14
- NashvilleSeptember 15
- KnoxvilleSeptember 16
- AtlantaSeptember 28
- WilmingtonSeptember 30
- RaleighOctober 26
- RichmondOctober 28
- OrlandoNovember 9
- MiamiNovember 11

Northeast

- MeridenJanuary 26
- BostonJanuary 27
- PortlandJanuary 28
- NewarkApril 6
- New YorkApril 28-29
- RochesterSeptember 22
- AlbanySeptember 23

Mid-Atlantic

- PhiladelphiaApril 8
- BaltimoreMay 18
- Washington, DCMay 20
- ClevelandMay 13
- ColumbusOctober 20
- CincinnatiOctober 21

The One Steel For North America.

A36/A57250

Chaparral's A36/A57250 steel, sold in Canada as 44W/50W, is mill-certified and meets multigrade requirements. For the United States and Mexico, it is produced so that both ASTM A36 and ASTM A572 Grade 50 specifications are met. For Canada, it satisfies the specifications for both CSA G 40.21 Grade 44W and CSA G 40.21 Grade 50W.

	A36	CHAPARRAL A36/A57250	A572-50
Yield Point, ksi	36 (min)	50 (min)	50 (min)
Tensile, ksi	58 - 80	65 - 80	65 (min)
Elongation in 8" %	20 (min)	20 (min)	18 (min)
Elongation in 2" %	21 (min)	23 (min)	21 (min)
Carbon %	0.26 (max)	0.22 (max)	0.23 (max)
Manganese %	—	0.50 - 1.35	1.35 (max)
Phosphorus %	0.04 (max)	0.04 (max)	0.04 (max)
Sulphur %	0.05 (max)	0.05 (max)	0.05 (max)
Silicon %	0.40 (max)	0.40 (max)	0.40 (max)
Columbium/Niobium or Vanadium %	—	0.005 - 0.05*	0.005 - 0.05

* If material is processed with vanadium, the typical vanadium range is .010 - .030.

	44W	CHAPARRAL 44W/50W	50W
Yield Point, ksi	44 (min)	50 (min)	50 (min)
Tensile, ksi	65 - 90	65 - 80	65 - 90
Elongation in 8" %	20 (min)	20 (min)	19 (min)
Elongation in 2" %	23 (min)	23 (min)	22 (min)
Carbon %	0.22 (max)	0.22 (max)	0.23 (max)
Manganese %	0.50 - 1.50	0.50 - 1.35	0.50 - 1.50
Phosphorus %	0.04 (max)	0.04 (max)	0.04 (max)
Sulphur %	0.05 (max)	0.05 (max)	0.05 (max)
Silicon %	0.40 (max)	0.40 (max)	0.40 (max)
Columbium/Niobium or Vanadium %	0.10 (max)	0.005 - 0.05*	0.10 (max)

* If material is processed with vanadium, the typical vanadium range is .010 - .030.

Call your Chaparral Steel representative today for more information or to place your order for the structural steel that makes the grade a number of ways: Chaparral's new A36/A57250.



300 Ward Road Midlothian, Texas 76065-9651
Toll Free (800) 527-7979 U.S. and Canada
Local (214) 775-8241 Fax (214) 775-6120

Grade School.

A36

A572 Grade 50

Economical and readily available

Mill certified 50,000 minimum yield

A36/A57250

Economical Readily available Mill certified 50,000 minimum yield

Introducing the one steel for North America: Chaparral Steel's A36/A57250 steel. This mill-certified steel satisfies multigrade requirements in the U.S., Canada and Mexico. The A36/A57250 steel meets all the specifications of our A36, A572 Grade 50, 44W and 50W. It's everything you like about these grades rolled into one. Plus, it costs the same as the A36, and has the same carbon equivalent range, an important factor for welding and formability. It's also just as easy to get, thanks to our innovative shipping techniques and central location. Call your Chaparral representative today and order the structural steel that makes the grade a number of ways: Chaparral's A36/A57250.

**CHAPARRAL
STEEL®**

300 Ward Road Midlothian, Texas 76065-9651
Toll Free (800) 527-7979 U.S. and Canada
Local (214) 775-8241 Fax (214) 775-6120



O'Hare's new transit system uses automated trains to rapidly transport passengers between terminals and remote parking areas. Photo by Abby Sadin.

People Mover Flies On Steel Wings

Wing-shaped crossheads minimize the depth of the supporting structure for a new transportation system at Chicago's O'Hare International Airport

**By James M. Daum, P.E.,
and Steve G. Citko, P.E.**

Along with its reputation as the world's busiest airport, Chicago's O'Hare International Airport is well known for its congestion. But by the end of 1992, movement between the airport's terminals and remote parking facilities will be both greatly simplified and much accelerated thanks to a new automated transportation system.

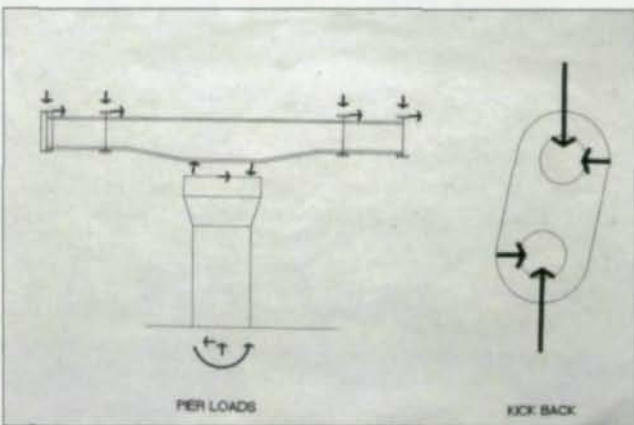
The 2.71 mile, \$150 million MATRA VAL Automated Guideway Transit (AGT) system features driverless trains capable of traveling at 50 mph. The system will conveniently connect domestic and international terminals to each other and to remote parking facilities. To alleviate congestion, the People Mover is designed to carry up to 2,400 passengers an hour with only 90 second intervals between trains.

The guideway system, designed by Chicago-based Teng & Associates, includes more than 10,000' of elevated structure, 4,000' of slab on grade construction, and 4,800' of track in a storage and maintenance facility. Three pedestrian bridges conveniently link the People Mover stations, the terminals and the parking garage. The pedestrian bridges are designed as a single, 160' span through truss. The through truss is primarily a Pratt truss, but it combines a Vierendeel panel at the area where the stations connect to provide pedestrian access.

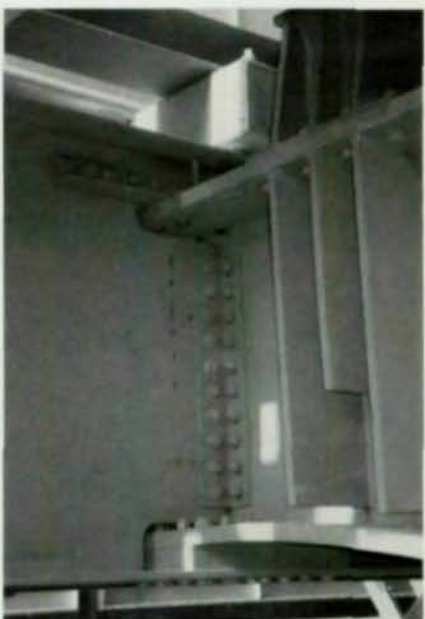
Space Constraints

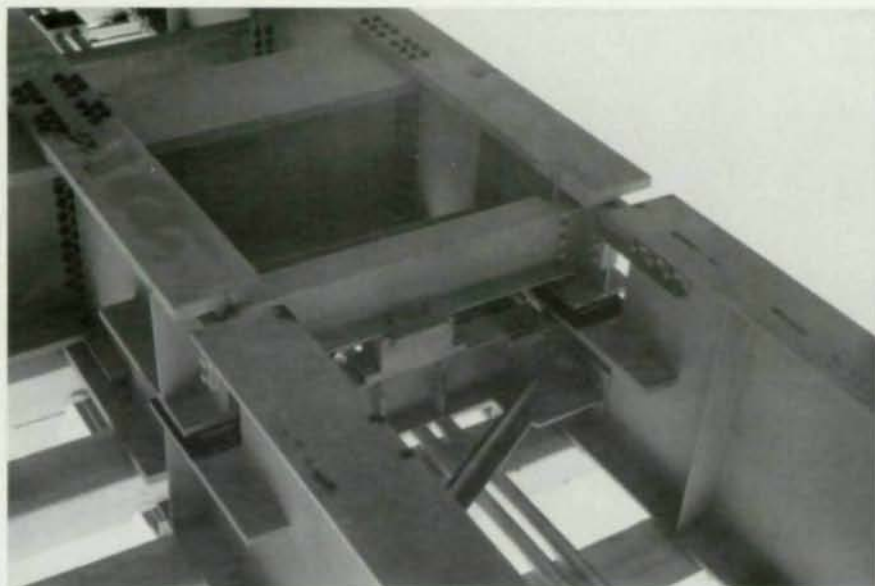
For most of the AGT system, two guideways (inbound and outbound) were constructed with a close-spaced alignment with 13' between centerlines. However, severe space constraints due to existing structures in the core area near the domestic terminals required an innovative engineering solution for the guideway and its supporting system.

Horizontal placement of the guideway had to fit in a narrow band of space available between the existing bi-level arrival/departure roadways and the six-level parking garage. A center station boarding platform with the



Above- and below-ground congestion necessitated wide-spaced guideways with narrow piers. The guideways are supported by wing-shaped crossheads that pierce the web of the inner guideway girders.





A shelf joint provides thermal expansion and transfers lateral loads down from the bracing level through a shear transfer device and back up to the bracing level.

guideway wide-spaced at 31' apart between centerlines was the narrowest functional arrangement that permitted sufficient boarding area and still fit within the available space. Because of the location of the lower level roadway, a single

column system was required to support the guideways, platforms and station. A framed bent support system would have placed the columns in the roadway.

In addition, vertical placement of the guideway had to allow vehi-

cle access on the roadway below and provide clearance for People Mover vehicles underneath overhead pedestrian bridges connecting the terminals to the stations. To accomplish these requirements, the guideway girders had to frame into the supporting crosshead.

The end result are wing-shaped crossheads designed to allow the structure to overhang or "fly over" the lower roadway.

Steel Superstructure

Both steel and concrete were considered during the design phase. However, because of its lighter overall system weight and its versatility to handle 200' radius curves, steel was selected.

The design features an open deck track structure using prestress

WHEN YOU BUY ST. LOUIS, YOU BUY AMERICAN!

AND YOU GET: • FULL TRACEABILITY
• LOT CONTROL
• CERTIFICATIONS

Registered Head Markings on all structural and machine bolts:



A-325
Type 1



A-325
Type 3



A-307-A



A-449



A-307-B

Products from 1/2" — 3" diameter include:



COUNTERSUNK



SQUARE
MACHINE



BUTTON
HEAD

ST. LOUIS SCREW & BOLT COMPANY

6900 N. Broadway • St. Louis, MO 63147

(314) 389-7500 • 1-800-237-7059 • Fax (314) 389-7510



A map of O'Hare International Airport shows the 2.71-mile path of the Automated Guideway Transit system connecting terminals, rental car return, and remote parking.

concrete ties on 5' centers, which allows snow to pass through its structure and helped to reduce weight. The track system was supported by guideway spans comprised of two 50"-deep A36 plate girders with 14"-wide flanges varying from $\frac{3}{4}$ " to $2\frac{1}{2}$ " thick. Since the rubber tired vehicles had relatively low impact forces, the flanges were attached to the webs with fillet welds rather than full penetration welds.

The ties were located where the lateral bracing system connected with the main supporting girders. This coordination helped transfer the lateral loads to the lateral bracing rather than through the ties to the girders, which would have exerted excessive loading to the weaker axis of the girders. The lat-

eral bracing system was comprised of WT section members located at the top of the diaphragm level.

Torsional effects were resolved by W24 diaphragms connected to interior stiffeners spaced 15' on tangent and 10' on curves. The dia-

phragms were set several inches below the top of the flange of the guideway to create a space for electrical conduits to be carried on top of the diaphragms.

Superelevation, or banking, was achieved by adjusting the elevation



The All New Actual Size 3 1/4 "x 5 1/2 "x 3/8 "

Jobber III

Dimensional Calculator

The Calculator that does it All !

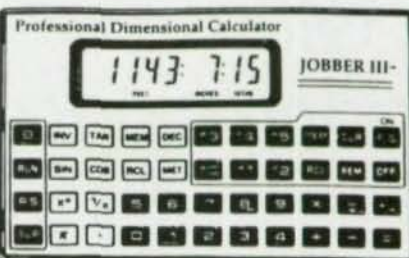
The Indispensable Tool for Everyone Who Works with DIMENSIONS
Detailers, Fabricators, Foreman, Crewleaders, Layout Men, Engineers
& Architects. The Worlds BEST Feet/Inches/Sixteenths Engineering
Calculator that also works in Decimals & Metric (millimeters) with
Instant Conversion at the touch of a button !

New Features Include:

- * Built-in Trig. Functions That **Automatically** Solve Bevel, Rise, Run & Slope in all Modes. Makes Calculating Beams, Columns, Frames, Stairs, Rails, Braces, Roof Slopes & Circles **Easy**.
- * The only Calculator with the Jobber III patented 0/15 Keyboard that cuts keystrokes by **66 %**, Saving You time & entry errors over "old fashion calculators" & that Means Money to YOU !
- * **4 Memories** that automatically retain your data even when the Jobber III is off.
- * Everyone who works with Dimensions needs the Power of the **Jobber III**.

Special Price
\$ 99.95 + \$4.50 S&H

Jobber Instruments
P.O. Box 4112 -C
Sevierville, TN, 37864



Order Toll-Free
1-800-635-1339

The People Mover project included the construction of stations in several locations.



of the guideway girders and using tapered shim plates to accommodate for rotation of the tie. Super-elevation, vertical curves and horizontal curves were achieved by accurately measuring and cutting the web and flanges prior to welding.

Analysis Studies

The beams were sized using a simple analysis that treated each guideway as an independent structure. Train locations were determined to produce maximum moment, shear and deflection. Additional forces due to curvature effects were accounted for by a V-Load type of analysis. Adequate section size was then checked using an interaction equation.

Analysis was performed using STAAD-III from Research Engineers, Inc.

Forces from design were compared with results from two detailed frame analysis studies. The sharpest curved segment in the wide-spaced and close-spaced areas were modeled using up to 700 members. These models were used to study in more detail the curvature effects and interaction between the guideways as a system. Although the system exhibits these more complicated types of response, the magnitude of forces were comparable or less than those obtained from the more simplified design procedure.

Forces and displacements from these studies were stored in a large database. With 700 members, 350 nodes, 20 load cases and several train positions, the number of

forces and displacements was in the hundreds of thousands. When designers wanted to look at values for one type of member or response at one location, however, they were able to extract by computer a small subset of information. They could then look at only a few pages of output rather than looking through hundreds of pages of standard output.

Crossheads

The "flying" crossheads were required to meet several objectives, including: resisting the overturning forces from wide-spaced guideways and vehicles; supporting the passenger stations; and transferring longitudinal guideway forces to the piers.

The height restrictions discussed earlier necessitated that the guideway girders be framed into the supporting crossheads. The wing-shape reduced the crosshead depth at the ends to let the crosshead pass through a reinforced opening in the web of the inner guideway girders while keeping them deep in the center for strength. This allowed guideway girder splices to occur near quarter points and not at the crossheads, keeping the crosshead connections very clean.

The transition in depth of the crosshead was achieved by two reverse curves in the bottom flange. This provided an aesthetic design and also eliminated butt welding of flanges up to 3½" thick since the gentle curves instead allowed the use of a single continuous flange plate.

The bottom flange was thicker so that it could resist longitudinal forces from the guideway in bending and transfer the force to the piers. Crossheads were fabricated from A588 steel, and the flanges were attached to the webs with full penetration welds while stiffeners were fillet welded.

Special Considerations

Due to the lack of redundancy in the structure, most components are fracture critical, and thus fatigue became a major influence in the design. The design of components was based on stress ranges appropriate for the number of cycles anticipated. Fatigue sensitive details were avoided. Large radii were specified at the re-entrant corners of the shelf joint and at the pierced guideway girder web to avoid stress concentrations.

Field welding was almost totally eliminated in favor of bolted splices and connections. A fracture critical control plan for welding was carefully followed that influenced types of welds and the welding procedures permitted.

All of the track and structural components have details to allow thermal movement at expansion joints, which are spaced 300' apart or less. The rails have finger joints. The steel girders have a shelf arrangement that provides support for the span in addition to allowing for thermal expansion.

Special link bearings supporting the crosshead were developed to accommodate uplift forces of 300 kips, while allowing for the necessary rotation and expansion that the structure and crossheads undergo when loaded. Because portions of the bearing are up to 4" thick, A486 Grade 120 cast steel was used to alleviate welding and fatigue problems. While the bearings are designed for vertical and longitudinal forces, lateral forces are taken by a central shear transfer device.

Piers And Caissons

Congestion was not just a problem above ground. Below ground in the core area are utility lines, walkways, offices and parking. The

piers were placed wherever practical to work around all of the obstructions. As a result, some piers are as close as 50' while others are more than 100' apart. Because of the space restrictions due to roadway clearance, the single column piers are only 6' wide. Therefore, they needed to be constructed of 9,000 psi concrete and were post-tensioned to reduce deflection and resist overturning moments of up to 3,200 k-ft.

Post-tensioning was achieved using either bars or cables depending on the magnitude of force, which could be as high as 4,000 kips effective prestress. Because of the large uplift on the bearings, they were held down by four post-tensioning cables per bearing. Main post-tensioning bars and cables were grouted, while bearing cables were left ungrouted and curved to allow side access for future removal, if necessary.

The soils consist of a layer of loose granular material followed by stiff-to-hard clays, with some dense sand and silt. Most piers are supported on a single 8'- to 9'-diameter caisson, which was designed to meet strength and deflection criteria. Caisson lengths range from approximately 30' to 55'. Where utilities and structures were immediately adjacent, making the top portion of the caisson ineffective, a tripod or T-shaped arrangement using three smaller caissons or a grade beam with two caissons was employed instead.

Team Members

The People Mover was designed and built by the French company MATRA. ICF Kaiser Engineers was the supervising consultant for architectural and engineering services. The guideway structure and pedestrian bridges were designed by Chicago-based Teng & Associates Inc., a full-service E/A firm. Structural steel fabricator was AISC-member Pitt-Des Moines, Inc. Erection was by Hi-Gate Erectors, Inc.

James M. Daum, P.E., is a vice president and Steve G. Citko, P.E., S.E., is a structural engineer with Teng & Associates.

NO. 1	ONE	1/2" x 1/4"	37'-0"
NO. 2	ONE	3/4" x 1/2"	37'-0"
NO. 3	ONE	1" x 3/4"	37'-0"
NO. 4	ONE	1 1/4" x 1"	37'-0"
NO. 5	ONE	1 1/2" x 1 1/4"	37'-0"
NO. 6	ONE	1 3/4" x 1 1/2"	37'-0"
NO. 7	ONE	2" x 1 1/2"	37'-0"
NO. 8	ONE	2 1/4" x 1 3/4"	37'-0"
NO. 9	ONE	2 1/2" x 1 3/4"	37'-0"
NO. 10	ONE	2 3/4" x 1 3/4"	37'-0"
NO. 11	ONE	3" x 1 3/4"	37'-0"
NO. 12	ONE	3 1/4" x 1 3/4"	37'-0"
NO. 13	ONE	3 1/2" x 1 3/4"	37'-0"
NO. 14	ONE	3 3/4" x 1 3/4"	37'-0"
NO. 15	ONE	4" x 1 3/4"	37'-0"
NO. 16	ONE	4 1/4" x 1 3/4"	37'-0"
NO. 17	ONE	4 1/2" x 1 3/4"	37'-0"
NO. 18	ONE	4 3/4" x 1 3/4"	37'-0"
NO. 19	ONE	5" x 1 3/4"	37'-0"
NO. 20	ONE	5 1/4" x 1 3/4"	37'-0"
NO. 21	ONE	5 1/2" x 1 3/4"	37'-0"
NO. 22	ONE	5 3/4" x 1 3/4"	37'-0"
NO. 23	ONE	6" x 1 3/4"	37'-0"
NO. 24	ONE	6 1/4" x 1 3/4"	37'-0"
NO. 25	ONE	6 1/2" x 1 3/4"	37'-0"
NO. 26	ONE	6 3/4" x 1 3/4"	37'-0"
NO. 27	ONE	7" x 1 3/4"	37'-0"
NO. 28	ONE	7 1/4" x 1 3/4"	37'-0"
NO. 29	ONE	7 1/2" x 1 3/4"	37'-0"
NO. 30	ONE	7 3/4" x 1 3/4"	37'-0"
NO. 31	ONE	8" x 1 3/4"	37'-0"
NO. 32	ONE	8 1/4" x 1 3/4"	37'-0"
NO. 33	ONE	8 1/2" x 1 3/4"	37'-0"
NO. 34	ONE	8 3/4" x 1 3/4"	37'-0"
NO. 35	ONE	9" x 1 3/4"	37'-0"
NO. 36	ONE	9 1/4" x 1 3/4"	37'-0"
NO. 37	ONE	9 1/2" x 1 3/4"	37'-0"
NO. 38	ONE	9 3/4" x 1 3/4"	37'-0"
NO. 39	ONE	10" x 1 3/4"	37'-0"
NO. 40	ONE	10 1/4" x 1 3/4"	37'-0"
NO. 41	ONE	10 1/2" x 1 3/4"	37'-0"
NO. 42	ONE	10 3/4" x 1 3/4"	37'-0"
NO. 43	ONE	11" x 1 3/4"	37'-0"
NO. 44	ONE	11 1/4" x 1 3/4"	37'-0"
NO. 45	ONE	11 1/2" x 1 3/4"	37'-0"
NO. 46	ONE	11 3/4" x 1 3/4"	37'-0"
NO. 47	ONE	12" x 1 3/4"	37'-0"
NO. 48	ONE	12 1/4" x 1 3/4"	37'-0"
NO. 49	ONE	12 1/2" x 1 3/4"	37'-0"
NO. 50	ONE	12 3/4" x 1 3/4"	37'-0"
NO. 51	ONE	13" x 1 3/4"	37'-0"
NO. 52	ONE	13 1/4" x 1 3/4"	37'-0"
NO. 53	ONE	13 1/2" x 1 3/4"	37'-0"
NO. 54	ONE	13 3/4" x 1 3/4"	37'-0"
NO. 55	ONE	14" x 1 3/4"	37'-0"
NO. 56	ONE	14 1/4" x 1 3/4"	37'-0"
NO. 57	ONE	14 1/2" x 1 3/4"	37'-0"
NO. 58	ONE	14 3/4" x 1 3/4"	37'-0"
NO. 59	ONE	15" x 1 3/4"	37'-0"
NO. 60	ONE	15 1/4" x 1 3/4"	37'-0"
NO. 61	ONE	15 1/2" x 1 3/4"	37'-0"
NO. 62	ONE	15 3/4" x 1 3/4"	37'-0"
NO. 63	ONE	16" x 1 3/4"	37'-0"
NO. 64	ONE	16 1/4" x 1 3/4"	37'-0"
NO. 65	ONE	16 1/2" x 1 3/4"	37'-0"
NO. 66	ONE	16 3/4" x 1 3/4"	37'-0"
NO. 67	ONE	17" x 1 3/4"	37'-0"
NO. 68	ONE	17 1/4" x 1 3/4"	37'-0"
NO. 69	ONE	17 1/2" x 1 3/4"	37'-0"
NO. 70	ONE	17 3/4" x 1 3/4"	37'-0"
NO. 71	ONE	18" x 1 3/4"	37'-0"
NO. 72	ONE	18 1/4" x 1 3/4"	37'-0"
NO. 73	ONE	18 1/2" x 1 3/4"	37'-0"
NO. 74	ONE	18 3/4" x 1 3/4"	37'-0"
NO. 75	ONE	19" x 1 3/4"	37'-0"
NO. 76	ONE	19 1/4" x 1 3/4"	37'-0"
NO. 77	ONE	19 1/2" x 1 3/4"	37'-0"
NO. 78	ONE	19 3/4" x 1 3/4"	37'-0"
NO. 79	ONE	20" x 1 3/4"	37'-0"
NO. 80	ONE	20 1/4" x 1 3/4"	37'-0"
NO. 81	ONE	20 1/2" x 1 3/4"	37'-0"
NO. 82	ONE	20 3/4" x 1 3/4"	37'-0"
NO. 83	ONE	21" x 1 3/4"	37'-0"
NO. 84	ONE	21 1/4" x 1 3/4"	37'-0"
NO. 85	ONE	21 1/2" x 1 3/4"	37'-0"
NO. 86	ONE	21 3/4" x 1 3/4"	37'-0"
NO. 87	ONE	22" x 1 3/4"	37'-0"
NO. 88	ONE	22 1/4" x 1 3/4"	37'-0"
NO. 89	ONE	22 1/2" x 1 3/4"	37'-0"
NO. 90	ONE	22 3/4" x 1 3/4"	37'-0"
NO. 91	ONE	23" x 1 3/4"	37'-0"
NO. 92	ONE	23 1/4" x 1 3/4"	37'-0"
NO. 93	ONE	23 1/2" x 1 3/4"	37'-0"
NO. 94	ONE	23 3/4" x 1 3/4"	37'-0"
NO. 95	ONE	24" x 1 3/4"	37'-0"
NO. 96	ONE	24 1/4" x 1 3/4"	37'-0"
NO. 97	ONE	24 1/2" x 1 3/4"	37'-0"
NO. 98	ONE	24 3/4" x 1 3/4"	37'-0"
NO. 99	ONE	25" x 1 3/4"	37'-0"
NO. 100	ONE	25 1/4" x 1 3/4"	37'-0"
NO. 101	ONE	25 1/2" x 1 3/4"	37'-0"
NO. 102	ONE	25 3/4" x 1 3/4"	37'-0"
NO. 103	ONE	26" x 1 3/4"	37'-0"
NO. 104	ONE	26 1/4" x 1 3/4"	37'-0"
NO. 105	ONE	26 1/2" x 1 3/4"	37'-0"
NO. 106	ONE	26 3/4" x 1 3/4"	37'-0"
NO. 107	ONE	27" x 1 3/4"	37'-0"
NO. 108	ONE	27 1/4" x 1 3/4"	37'-0"
NO. 109	ONE	27 1/2" x 1 3/4"	37'-0"
NO. 110	ONE	27 3/4" x 1 3/4"	37'-0"
NO. 111	ONE	28" x 1 3/4"	37'-0"
NO. 112	ONE	28 1/4" x 1 3/4"	37'-0"
NO. 113	ONE	28 1/2" x 1 3/4"	37'-0"
NO. 114	ONE	28 3/4" x 1 3/4"	37'-0"
NO. 115	ONE	29" x 1 3/4"	37'-0"
NO. 116	ONE	29 1/4" x 1 3/4"	37'-0"
NO. 117	ONE	29 1/2" x 1 3/4"	37'-0"
NO. 118	ONE	29 3/4" x 1 3/4"	37'-0"
NO. 119	ONE	30" x 1 3/4"	37'-0"
NO. 120	ONE	30 1/4" x 1 3/4"	37'-0"
NO. 121	ONE	30 1/2" x 1 3/4"	37'-0"
NO. 122	ONE	30 3/4" x 1 3/4"	37'-0"
NO. 123	ONE	31" x 1 3/4"	37'-0"
NO. 124	ONE	31 1/4" x 1 3/4"	37'-0"
NO. 125	ONE	31 1/2" x 1 3/4"	37'-0"
NO. 126	ONE	31 3/4" x 1 3/4"	37'-0"
NO. 127	ONE	32" x 1 3/4"	37'-0"
NO. 128	ONE	32 1/4" x 1 3/4"	37'-0"
NO. 129	ONE	32 1/2" x 1 3/4"	37'-0"
NO. 130	ONE	32 3/4" x 1 3/4"	37'-0"
NO. 131	ONE	33" x 1 3/4"	37'-0"
NO. 132	ONE	33 1/4" x 1 3/4"	37'-0"
NO. 133	ONE	33 1/2" x 1 3/4"	37'-0"
NO. 134	ONE	33 3/4" x 1 3/4"	37'-0"
NO. 135	ONE	34" x 1 3/4"	37'-0"
NO. 136	ONE	34 1/4" x 1 3/4"	37'-0"
NO. 137	ONE	34 1/2" x 1 3/4"	37'-0"
NO. 138	ONE	34 3/4" x 1 3/4"	37'-0"
NO. 139	ONE	35" x 1 3/4"	37'-0"
NO. 140	ONE	35 1/4" x 1 3/4"	37'-0"
NO. 141	ONE	35 1/2" x 1 3/4"	37'-0"
NO. 142	ONE	35 3/4" x 1 3/4"	37'-0"
NO. 143	ONE	36" x 1 3/4"	37'-0"
NO. 144	ONE	36 1/4" x 1 3/4"	37'-0"
NO. 145	ONE	36 1/2" x 1 3/4"	37'-0"
NO. 146	ONE	36 3/4" x 1 3/4"	37'-0"
NO. 147	ONE	37" x 1 3/4"	37'-0"
NO. 148	ONE	37 1/4" x 1 3/4"	37'-0"
NO. 149	ONE	37 1/2" x 1 3/4"	37'-0"
NO. 150	ONE	37 3/4" x 1 3/4"	37'-0"
NO. 151	ONE	38" x 1 3/4"	37'-0"
NO. 152	ONE	38 1/4" x 1 3/4"	37'-0"
NO. 153	ONE	38 1/2" x 1 3/4"	37'-0"
NO. 154	ONE	38 3/4" x 1 3/4"	37'-0"
NO. 155	ONE	39" x 1 3/4"	37'-0"
NO. 156	ONE	39 1/4" x 1 3/4"	37'-0"
NO. 157	ONE	39 1/2" x 1 3/4"	37'-0"
NO. 158	ONE	39 3/4" x 1 3/4"	37'-0"
NO. 159	ONE	40" x 1 3/4"	37'-0"
NO. 160	ONE	40 1/4" x 1 3/4"	37'-0"
NO. 161	ONE	40 1/2" x 1 3/4"	37'-0"
NO. 162	ONE	40 3/4" x 1 3/4"	37'-0"
NO. 163	ONE	41" x 1 3/4"	37'-0"
NO. 164	ONE	41 1/4" x 1 3/4"	37'-0"
NO. 165	ONE	41 1/2" x 1 3/4"	37'-0"
NO. 166	ONE	41 3/4" x 1 3/4"	37'-0"
NO. 167	ONE	42" x 1 3/4"	37'-0"
NO. 168	ONE	42 1/4" x 1 3/4"	37'-0"
NO. 169	ONE	42 1/2" x 1 3/4"	37'-0"
NO. 170	ONE	42 3/4" x 1 3/4"	37'-0"
NO. 171	ONE	43" x 1 3/4"	37'-0"
NO. 172	ONE	43 1/4" x 1 3/4"	37'-0"
NO. 173	ONE	43 1/2" x 1 3/4"	37'-0"
NO. 174	ONE	43 3/4" x 1 3/4"	37'-0"
NO. 175	ONE	44" x 1 3/4"	37'-0"
NO. 176	ONE	44 1/4" x 1 3/4"	37'-0"
NO. 177	ONE	44 1/2" x 1 3/4"	37'-0"
NO. 178	ONE	44 3/4" x 1 3/4"	37'-0"
NO. 179	ONE	45" x 1 3/4"	37'-0"
NO. 180	ONE	45 1/4" x 1 3/4"	37'-0"
NO. 181	ONE	45 1/2" x 1 3/4"	37'-0"
NO. 182	ONE	45 3/4" x 1 3/4"	37'-0"
NO. 183	ONE	46" x 1 3/4"	37'-0"
NO. 184	ONE	46 1/4" x 1 3/4"	37'-0"
NO. 185	ONE	46 1/2" x 1 3/4"	37'-0"
NO. 186	ONE	46 3/4" x 1 3/4"	37'-0"
NO. 187	ONE	47" x 1 3/4"	37'-0"
NO. 188	ONE	47 1/4" x 1 3/4"	37'-0"
NO. 189	ONE	47 1/2" x 1 3/4"	37'-0"
NO. 190	ONE	47 3/4" x 1 3/4"	37'-0"
NO. 191	ONE	48" x 1 3/4"	37'-0"
NO. 192	ONE	48 1/4" x 1 3/4"	37'-0"
NO. 193	ONE	48 1/2" x 1 3/4"	37'-0"
NO. 194	ONE	48 3/4" x 1 3/4"	37'-0"
NO. 195	ONE	49" x 1 3/4"	37'-0"
NO. 196	ONE	49 1/4" x 1 3/4"	37'-0"
NO. 197	ONE	49 1/2" x 1 3/4"	37'-0"
NO. 198	ONE	49 3/4" x 1 3/4"	37'-0"
NO. 199	ONE	50" x 1 3/4"	37'-0"

SHOP DETAILS
THE EASY WAY

Beams, Columns, Plans, Elevations, Stairs,
Handrail, Grating Layout, Ladders, Bracing, Roof
Frames, Floor Frames, Kickers, Hangers, Relieving
angles, Roof angles, Pipe racks, Breeching supports,
Stack framing, Access platforms, Gussets, Tubes,
Trusses, Towers
or anything else you can fabricate.

without using a pencil.

If you want to get rid of your pencil we can show you how.

B (1) = 7'-4"

COMPUTER DETAILING CORPORATION
A service company for steel fabricators and detailers
1310 Industrial Blvd.
Southampton, PA 18966
215-355-6003

ONE STRINGER - SS1 (As Shown)

FREE!! FREE!! FREE!! CONTINUOUS BEAM ANALYSIS PROGRAM

That's right, for just a nominal charge to cover materials and handling (\$19), we will send you our powerful CONTBEAM program. This is our fullblown CONTBEAM, not a watered-down version. How can we possibly afford to do this? It is because we are convinced that once you've tried our software, you will be back for more. You will also receive all required documentation, as well as a catalog for our 100+ programs for concrete, masonry, steel, timber and post-tensioned concrete design, including design and graphics modules for CONTBEAM. Our programs are developed to run on IBM-PC, -XT, -AT, PS2 and most compatibles.

CONTBEAM analyzes continuous beams having up to 20 spans. Girder moments and shears are computed and may include the effects of up to 100 loadings alternate-day live loadings and live load reductions. Deflections are computed at the span tenth points using Newmark's numerical integration method.

Also, you will be sent a free copy of "CONTBEAM/TALK", SAI's fast, easy, and powerful INTERACTIVE software module for CONTBEAM programs. This "add-on" TALK module allows users to greatly speed up input preparation and problem reruns. The CONTBEAM/TALK module is menu-driven, has a spreadsheet format, and many on-screen help features. Also included are a built-in text editor, and error checking.

Graphics software "GCONBEAM", is available for CONTBEAM. GCONBEAM allows engineers to obtain detailed graphical moment, shear, and deflection diagrams for the CONTBEAM analyses.

THE MOST PRODUCTIVE STRUCTURAL DESIGN SOFTWARE SINCE 1966

SAI

STRUCTURAL ANALYSIS, INC.
555 S. Federal Hwy.
Suite 210
Boca Raton, FL 33432
(407) 394-4257

YES, Please send me free CONTBEAM (\$19 to cover materials and handling.) 015
(Offer valid in the U.S.A. and Canada only, expires January 31, 1993)

NAME _____ COMPANY _____

STREET ADDRESS _____

CITY/STATE/ZIP _____

PHONE _____ MASTERCARD VISA

ACCT. NO. _____ EXP. DATE _____ CHECK ENCLOSED

SIGNATURE _____ DATE _____


Modern Steel Construction / November 1992 / 21

WHEN JOISTS SAVE. THEY CALLED IT TH



The "Duke" installing ceiling panels in the Hanging Lakes Tunnel, Glenwood Canyon, Colorado.

00912 D THEM \$550,000, E TUNNEL OF LOVE.



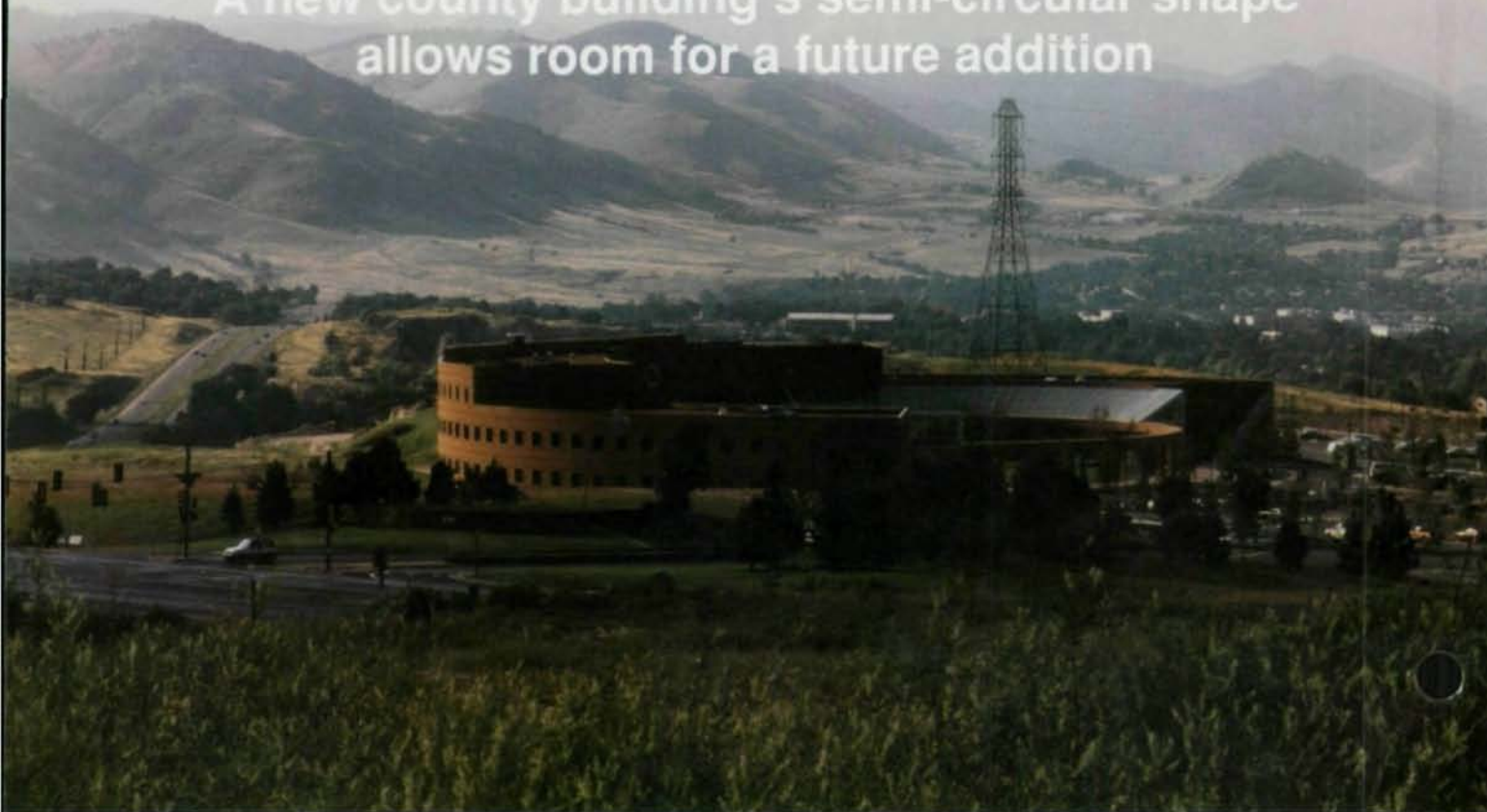
As far as we know, no one has ever used steel joists to construct the roof in a tunnel. But chances are, a lot of people will from now on. Because joists can save money in tunnel construction. Big money. In fact, at the Hanging Lakes Tunnel in Colorado's Glenwood Canyon, Vulcraft joists cost \$550,000 less than the traditional steel framing used in tunnel construction. If that's not enough for you, our joists can also save labor and time. They're lighter than structural steel beams, so they're easier to erect.

The ceiling contractor for the Hanging Lakes Tunnel even designed a special rig, nicknamed the "Duke" to install ceiling panels attached to steel joists. Which made the tunnel construction go even faster. So before you start your next project, consider Vulcraft steel joists. They're economical, strong and who knows where else they can save big money. For more information, contact any of the Vulcraft plants listed below. **VULCRAFT**
Or see Sweets' 05100/VUL. A Division of Nucor Corporation

PO Box 637, Brigham City, UT 84302, 801/734-9433; PO Box 100520, Florence, SC 29501, 803/662-0381;
PO Box 169, Fort Payne, AL 35967, 205/845-2460; PO Box 186, Grapeland, TX 75844, 409/687-4665;
PO Box 59, Norfolk, NE 68702, 402/644-8500; PO Box 1000, St. Joe, IN 46785, 219/337-5411. Structural
Engineers: Parsons, Brinkerhoff, Quade & Douglas; Steel Erector: Starke Construction Company.

Hilltop Crown

A new county building's semi-circular shape allows room for a future addition



By Richard Weingardt, PE
Steel's versatility was put to the test in the design of the \$9.5 million Jefferson County Human Services Center. The 134,000-sq.-ft. office building in a fast-growing county between Denver and the mountains just to the west, is a three-quarter circle in design. Additionally, the structure had to accommodate soil movements, wide temperature fluctuations, and heavy winds.

Located on a hilltop slightly more than 6,000' above sea level, the circular structure surrounds a large courtyard open to the east. The site, planned as part of a 196-acre governmental complex for the county, already contained several buildings and shortly all county government services will be relocated to the site. It's location in the heart of the county, combined with

the panoramic view of the city to the east and mountains to the west, make it a natural choice for such a prominent complex.

The three- and four-story-high structure is a three-quarter circle in plan and fans out around a central courtyard. It is 360' in diameter and forms a large three-dimensional horseshoe. The design accounts for the possibility of a future addition, which is planned as an 80,000-sq.-ft. segment completely closing the circle.

Though the site is in a seismic Zone I area, earthquakes are not a major structural design factor in Colorado. Expansive soils and climatological conditions are, however. They dictated some unusual measures be taken in the design of the building to provide resistance to extremely high and violent winds, heavy snows, soil move-

ments, and temperatures varying more than 125° F.

Structural System

The structural skeleton of the building is comprised of A572 Grade 50 rolled high-strength steel sections. Lateral resistance is provided by a combination of X-braced frames and core walls. The braced frames consist of A36 steel tube members. Composite steel and concrete floors—lightweight concrete topping and steel decking over steel beam and girders—provide the necessary diaphragm action against lateral forces. The roof deck system is similar, except there is no concrete topping and open web joists are used instead of beams.

Typical floor beams are W18x35 at 10' on center for the outside bays and W16x31 at 8' on center for interior bays. Perimeter girders are W21x44 and W24x55. Roof joists are 18H7 at 4' on center for both interior and exterior bays. Typical interior columns are W10x40 while those in the exterior walls are W10x33.

Due to the semicircular plan of the building, each steel component had to be individually fabricated and fit into place along the circular grid lines which made up the flowing architectural envelope. Contractor on the project was Pinkard Construction Co., Lakewood, CO.

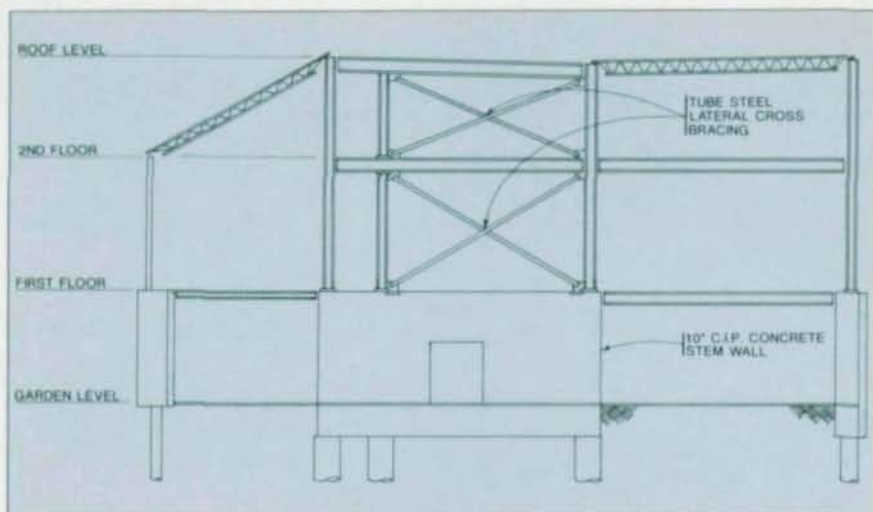
Unique Criteria

Structurally, the circular building presented several unique design problems. Since thermal and soils movements—both lateral and vertical—were major concerns, the structure was designed in three segments with two expansion joints between. Double columns were not used at these joints; rather, a single column with slip joint haunches was designed. Teflon pads were used between beams and haunches for smooth action during movements.

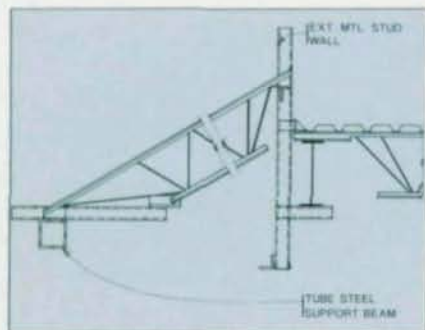
Construction itself phased around the design and expansion joints. The building was erected in three vertical sections rather than by the traditional floor-by-floor method. This allowed work to pro-



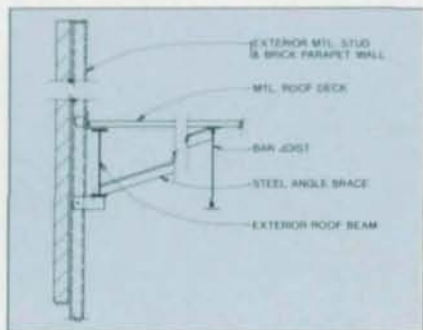
The 132,000-sq.-ft. circular building wraps around a colonnaded plaza, creating a landscaped courtyard as a transitional space between the building, its parking area and the natural terrain. As befits a building in nature-conscious Colorado, the designers incorporated the colors and textures of the landscape. Wheat colored brick is used for the exterior walls, to match the color of the clay in the foothill hogbacks, and bands of deep maroon granite outlining the brick draw from the colors of the surrounding terrain. Photos opposite and at top by Nick Merrick, Hedrich Blessing. Construction photos courtesy of Pinkard Construction Co.



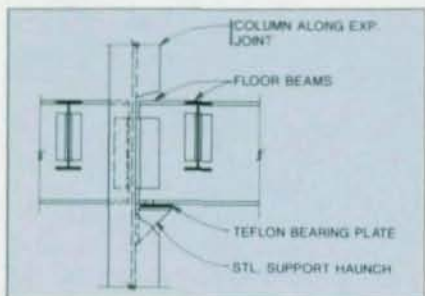
Building section showing combination steel X-bracing and concrete shear walls for lateral resistance.



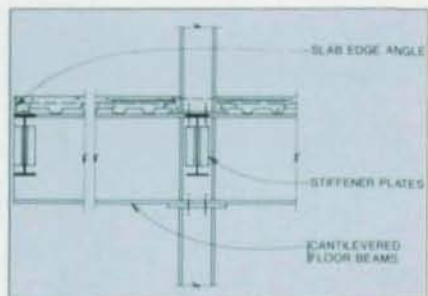
Exposed steel framing to support roof skylights circling around the courtyard walls.



Steel framing detail for parapet wall at the roof.



Expansion joint using single column with bracket and teflon slippage detail.



Cantilevered floor beams at circular exterior walls.

ceed on respective sections as the materials became available and each vertical section could be constructed at its own pace.

The project's steel fabricator and erector were put to the test throughout construction. "The fabricator had a great deal of challenge relative to the layout of the building in general," explained John Davis, vice president in charge of the project for structural engineer Richard Weingardt Consultants.

"Many of the features of the building were not laid out in a radial fashion, yet the grid lines were—two sets of ground rules for the same structure. Construction was done in three independent curved segments, with each being laterally independent as if it were a separate structure, yet that lateral design had to be compatible with the adjacent segment, and tied together when completed so you wouldn't get three buildings moving independently—and differently—when exposed to lateral forces."

The building foundations consist of concrete piers drilled into bedrock, a sometimes difficult job because the irregular "Red Rocks formation" of the foothills area has many seams and cracks.

Design Parameters

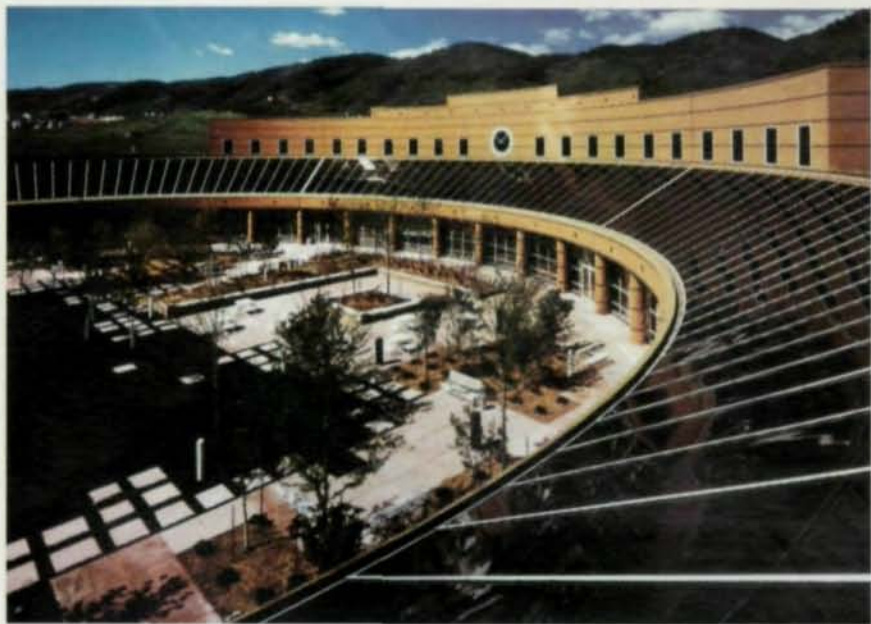
The architectural design included the need for high screen walls to conceal the roof top units from view. The structural capacity of these parapet walls, as well as the steel structure itself, was well tested during construction when on several days the temperature fell to 25-below-zero and the wind reached 90 mph.

The curved exterior walls are clad with brick made from carefully selected clays that blend in with the surrounding environment. Additionally, the architect, C.W. Fentress J.H. Bradburn Associates, Denver, used Italian granite articulation bands throughout to create relief for the large expanses of brick.

Interior partitions radiate outward from the curved courtyard walls like the spokes of a wheel.

00914

A two-story solarium rings the inside wall of the building, providing circulation and views of the landscaped courtyard below. Reflective glass on the solarium's skylight cuts glare and heat. The terrazzo floor is patterned in two colors, emphasizing the colonnade and the radial pattern of the space itself. Photo at right by Tom Travis. Photo at right by Nick Merrick, Hedrich Blessing.



The unique room configurations created challenging ceiling and floor covering layouts, especially in the computer room where raised access flooring was utilized.

Around the plaza courtyard area, skylights rest on a complicated exposed steel joist roof framework. Daily elongation and contraction cycles caused by daytime heating and evening cooling of the brick and steel framing members are controlled by a series of structural expansion joints that separate the building into manageable segments.

"The building [which has been in use for nearly a year] has done extremely well," said Edward Balkin, project designer for Fentress/Bradburn. "The steel system has more flexibility for us to do the curvilinear shape."

Construction of a massive new \$58 million, 521,000-sq.-ft. Judicial and Administrative Center, designed by the same architects and engineers, is now underway.

Richard Weingardt is president of Richard Weingardt Consultants, Inc., a large Denver-based structural engineering firm.

MAX WEISS

STEEL SHAPING SPECIALISTS



UNUSUAL SHAPES AREN'T UNUSUAL AT MAX WEISS.

If it's structural steel that needs to be bent for unique applications, chances are that Max Weiss bends it. We can bend steel the easy way, the hard way, irregular curves, offsets, elliptical shapes, circles, segments with tangents and we can bend it to tight radiuses with minimal distortion.



We offer a rare combination of skills in forging, the hot shaping of metals, and the rolling and forming of tubing, rail and bars. If you have a question or problem in steel shaping, call, fax or write Dept. M92 for a solution.

TAKE IT TO THE MAX.

max weiss

MAX WEISS CO., INC.
8625 W. Bradley Road M92
Milwaukee, WI 53224
Telephone: 414-355-8220
MAX FAX: 414-355-4698

Since 1962, we've helped And a lot



Over 200 bridges in Ohio are constructed of weathering steel. Most of it produced by Bethlehem.

They use it for the same compelling reasons the New Jersey Turnpike Authority, Maine, Maryland, and numerous other states do.

That's because weathering steel cuts costs both initially and over the life of the structure. Plus, it's attractive and offers engineers broad design flexibility.

Ohio is particularly enthusiastic about the use of weathering steel for appropriate locations in conjunction with their jointless bridges.

They began the jointless concept in the 1930's. Since then, they've refined their jointless designs to the point where joints have been eliminated not just over the piers, but at the abutments, as well.

As a result, drainage problems associated with jointed bridges, such as failure of joint seals, or clogged drains overflowing onto structural members, have been eliminated.

Bridge lengths have also increased. Initially, the limit was 200 ft. Today, it's been increased to 300 ft., and even greater lengths are being constructed.

Engineers in the Buckeye state began using weathering

Ohio save a lot of money. of paint.



steel in the early 1960's.

Low initial cost and minimum maintenance requirements make it highly competitive with other grades of steel. Also, it's attractive and blends in with its natural surroundings.

Strength is another strong factor. Weathering steel is comparable to ASTM A572 Grade 50 high-strength steel. And with a yield strength that's 38% higher than ASTM A36 steel, weathering steel permits the design of lighter, slimmer, more graceful sections.

That's more, since it's self-healing, the need for painting is virtually eliminated.

For a copy of our Product Booklet No. 3790, and our latest Technical Bulletin TB-307 on "Uncoated Weathering Steel Structures," contact the Bethlehem Steel sales office, Construction Marketing Division, Bethlehem PA 18016-7699. Or call: (215) 694-5906.

You'll discover how we can save you a lot of money. Not to mention a lot of paint.

Bethlehem 

Baseball's Past Revisited

While nostalgia played a part in choosing steel for Baltimore's new stadium, economics also was an important consideration



Photography by Janice E. Rettaliata, Baltimore

By John S. Palmer
When Oriole Park at Camden Yards opened in March, critics raved. "[Oriole Park] is a building capable of wiping out, in a single gesture, 50 years of wretched stadium design and restoring the joyous possibility that a ballpark might actually enhance the experience of watching the game of baseball," wrote architecture critic Paul Goldberger in the *New York Times*.

And after a full season of play, the reaction is still just as positive.

Much has been written and said about this 47,000 seat facility built on an 85-acre site in an historic neighborhood. It is a ballpark that takes its character from the surrounding streets and the building materials chosen to construct it: the open airiness of exposed structural steel trusses and a facade of red brick and architectural precast concrete panels.

According to Bruce Hoffman, executive director of the Maryland Stadium Authority, the Orioles wanted to build in steel to shape a facility reminiscent of some of the colorful, human-scaled ballparks of the past, such as Fenway Park in Boston, Wrigley Field in Chicago, and Brooklyn's old Ebbets Field. What they envisioned was a "field of dreams" where heroes were made and crowds became devoted fans—an antithesis to the massive concrete cookie-cutter all-purpose facilities that dominated the sports construction industry in the 1960s and 1970s.

"From the start, the Orioles wanted to use steel because it

91600
00915

would be more appealing and friendlier," said Janet Marie Smith, the ballclub's vice president for stadium planning and development. "We also wanted the stadium to fit the context of historic Baltimore, which is an old steel town."

Lehrer McGovern Bovis (LMB) was retained in January 1989 to act as project advisor for the Baltimore Orioles and to oversee the technical aspects of the project, and later as construction manager for the Concessionaire, ARA Services. Barton-Malow/Sverdrup, Upper Marlboro, MD, was the project's construction manager.

"The design was an evolving process that involved many in the key decisions," said Ben Barnert, senior vice president with the architect, Hellmuth, Obata & Kassabaum (HOK Sport), Kansas City.

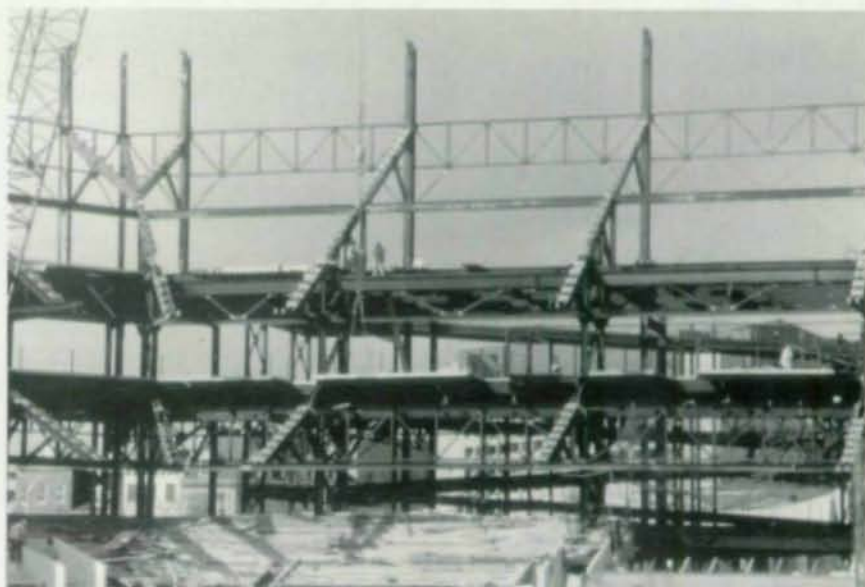
Economic Design Considerations

Early on, it looked as though concrete would be the more economical building material and the design proceeded based on that belief. However, because the Orioles wanted a more traditional and more friendly design, the design team took another look at steel.

Ken Hiller, vice president and chief structural engineer at LMB, recalls: "The data based on the original steel design versus concrete indicated that it would cost 50% more in steel. Based on my experience, I knew it was impossible for there to be that great a differential."

Several consultants were brought in to rework the calculations, including Paul Rongved, Ph.D., of Rongved Associates, New York City, an expert in the field of computer modeling. He contended that the original data input was incorrect and that a steel truss system would actually be less expensive than the concrete alternative.

"One of the problems in the calculations was they overlooked the expansions," explained Rongved. "The truss was calculated as a continuous member without taking into account that it was hinged at each truss point."



Once it was determined that steel was economically feasible, the question became whether the stadium could be redesigned with steel and still built in time to open the 1992 season.

LMB carefully analyzed the erection schedule using a three-color computerized graphic scheme to depict crane sequencing and the daily schedule of crane coordination and determined that two months could be gained within the overall construction schedule.

Bliss & Nyitray, Miami, who was later brought in as the project's structural engineers, concurred with Rongved and LMB that steel would be as economical as concrete but more aesthetically pleasing—as long as maintenance concerns could be satisfied.

The final design features a truss configuration that appears at the back row of the lower seating bowl and rises up through the entire facility. The main support bents,

spaced 42½' on center, provide both lateral bracing for the stadium and support for the private box level bleachers and the upper level bleachers by means of 36' and 21' cantilevers, respectively.

The concourses and the enclosed club are supported by W24x68 floor beams spaced on 9' centers framing to the bents, and are composite with the 2½" slab poured above the 3"-deep, 20 gauge composite steel floor decking. All structural steel is ASTM A36 and all bolted connections used 7/8"- and 1½"-diameter A325 high strength bolts.

Maintenance Concerns

To reduce corrosion and maintenance costs of the exposed steel in this coastal salt-air environment, the steel was shop painted with an organic zinc rich primer and a high-build aliphatic polyurethane finish coat. The perimeter of all exposed welded connections were seam welded to prevent moisture

intrusion. The faying surfaces of bolted connections were primed with an inorganic zinc rich primer that provided the necessary slip coefficient for the slip critical connections.

Waterproofing of the exposed concourse slabs was achieved by a waterproof membrane installed on top of the structural slab and then topped with a nominal 2"-thick slab reinforced with polypropylene fibers.

The private box level and upper level seating are framed with precast prestressed double "L" bleacher units. The structural behavior of the "folded plate" units was measure by a full scale load test that verified the design exceeded the requirements for load capacity, deflection and crack width.

John S. Palmer is director of sports facility practice with the Washington, DC, office of Lehrer McGovern Bovis, Inc.

OUR COMPETITORS CALLED IT
"MICKEY MOUSE"

OUR USERS CALL IT
FAST, EFFICIENT AND PROFITABLE

OUR COMPETITORS' USERS CALL IT
THEIR NEXT PURCHASE

STEELCAD - 800-456-7875

DESIGN INTERFACE - DETAILING - PRODUCTION CONTROL

Structural Considerations At Camden Yards

By Wm. Barton Wallis, P.E.

The Stadium above the Main Concourse Level is framed in structural steel. A design and cost comparison analysis was conducted between using A36 and A572 Grade 50 steel and at the time of the comparison, the A36 steel proved to be slightly more economical when comparing minimum depth and weights, deflections during concrete placement, and floor vibrations.

The main support bents, spaced 42'-6" on-center are primarily a truss configuration (see Figure 1) and provide both lateral bracing and gravity support for the Stadium. The primary bent employs a 12'-6"-deep vertical truss. The vertical truss chords are W14 sections with typical weights of 257 lbs. and 120 lbs. located at Grid Lines "C" and "C.3" respectively. The diagonal web members are W8x24 and the horizontal web members are double channels, which facilitated the connections.

Double plate connections were used in which the plates were placed on the outside of and bolted to the flanges of the W8 diagonals. The webs of the horizontal channels were then bolted on the outside of the plates and bolted as shown in Figures 2 and 3. The plates were shop welded to the webs of the W14 chords.

The Private Box Level bleachers and the Upper Level bleachers are supported, respectively, by means of 36' and 21' cantilever trusses. The web members are W10x26 members placed between the double channels with the flanges of the W10s bolted to the webs of the channels (see Figure 5). This proved to be a very simple truss to fabricate and provided a very stable and efficient member. Steel fabricator was AISC-member Trinity Industries Inc.

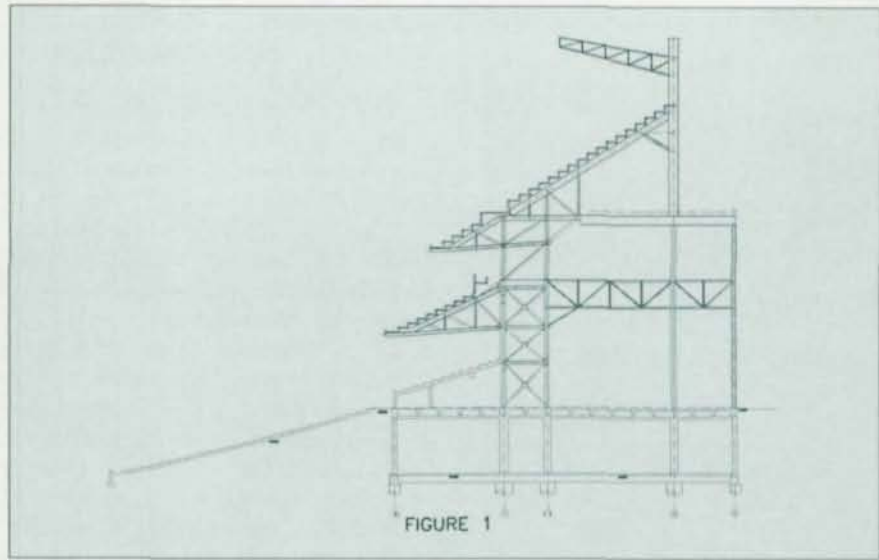


FIGURE 1

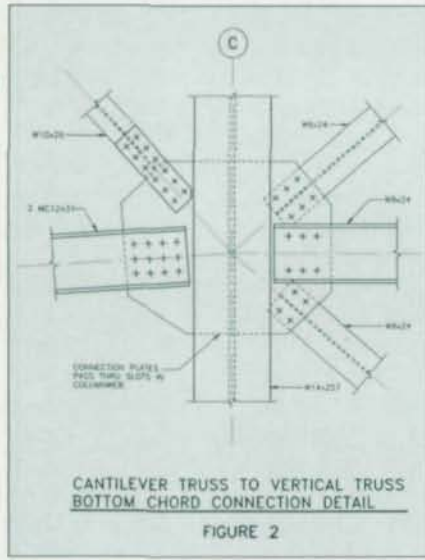


FIGURE 2

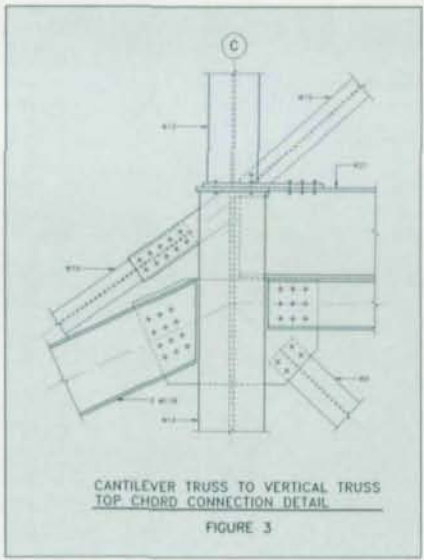


FIGURE 3

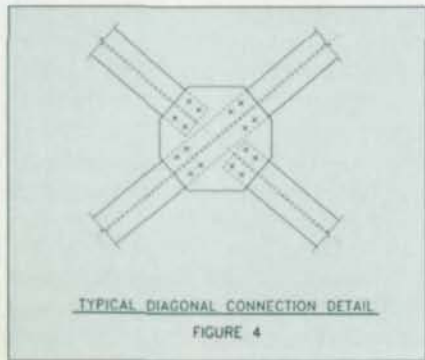
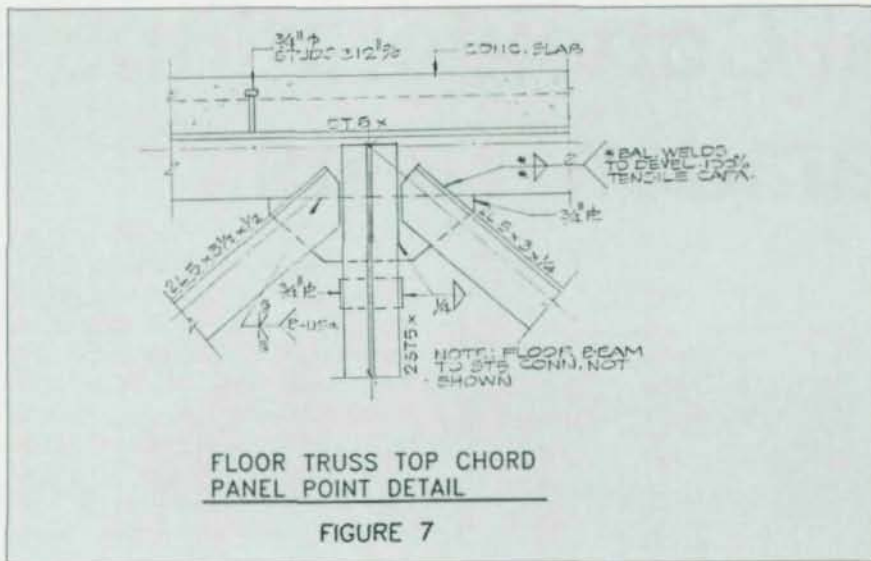
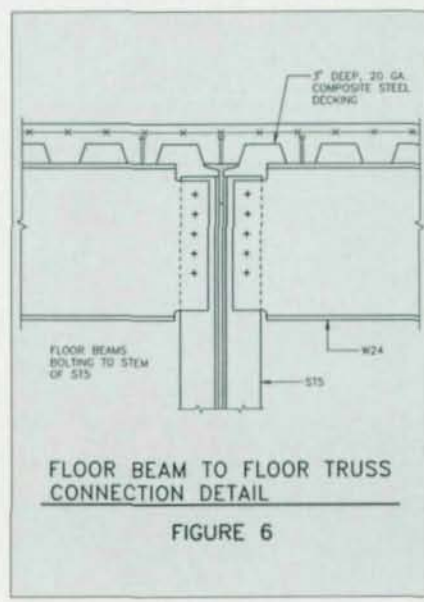


FIGURE 4



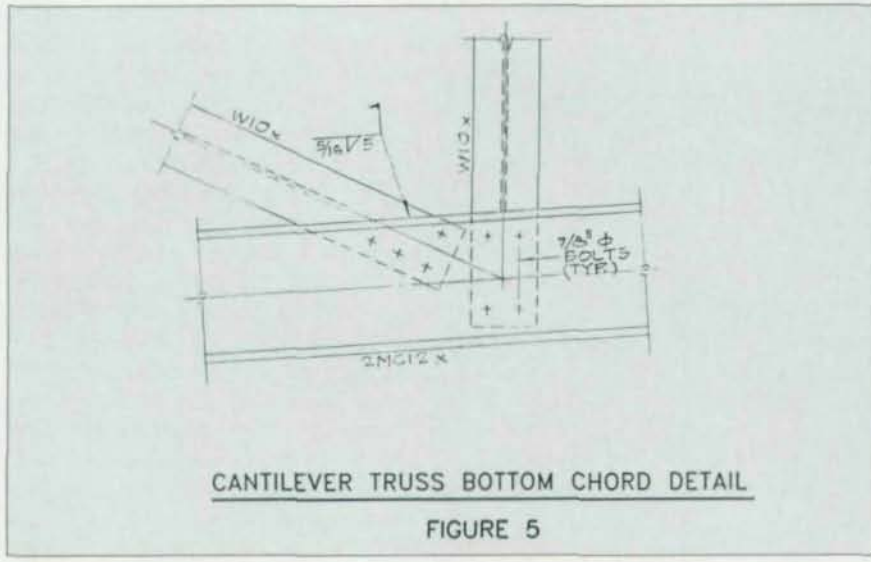
FLOOR TRUSS TOP CHORD
PANEL POINT DETAIL

FIGURE 7



FLOOR BEAM TO FLOOR TRUSS
CONNECTION DETAIL

FIGURE 6



CANTILEVER TRUSS BOTTOM CHORD DETAIL

FIGURE 5

The vertical truss and the cantilever trusses were each prefabricated and bolted together at the site. The connecting plates transferring the extremely large compression and tension forces extended through slots in the webs of the W14 columns, greatly reducing sensitive welding. The top and bottom chord connections are shown in Figures 2 and 3.

The private box level is framed with an 8'-deep truss connected to the vertical truss at Grid Line "C.3" and to W14 columns at Grid Lines "D" and "E". ST6x25 sections were used for the top and bottom chords, double angles for the diagonal web members and double ST5x12.7 vertical web members. The floor beams are spaced on 9'-1/2" centers and are connected directly to the ST5 vertical members with a standard shear connection as shown in Figure 6. This system eliminated the need for added plate connectors, simplifying fabrication. The chord stems were extended with a plate where the highly stressed diagonal members connected as shown in Figure 7.

The floor beams at the Upper Concourse level also are spaced on 9'-1/2" centers and are connected to W33x141 girders with single plate shear connectors.

The floor beams at the Private Box Level and the Upper Concourse Level were typically W24x68 members designed and detailed to be partially composite steel floor decking with 2 1/2"-thick, 4,000 psi regular weight concrete topping providing a total depth of 5 1/2". The structural slab was then topped with rigid insulation and a 2" non-structural topping at the Private Box Level and by a waterproof membrane and 2 1/2" to 4 1/2" non-structural topping sloped to floor drains at the Upper Concourse. The topping slabs were reinforced with polypropylene fibers.

At Homeplate, the Upper and Lower Press Levels were added between the Main Concourse Level and the Private Box Level. The additional two levels restricted headroom and thus the trusses were replaced with rigid frames.



pletely remove the wall and replace it with a structural steel frame supporting brick veneer cladding. The new steel frame provided both gravity support for the

8-story structure and lateral support for the northern 76'-6" section of the warehouse.

Ticket windows at the first story prevented the use of diagonal br-

ing, and as a result the lateral wind forces are resisted by a rigid frame consisting of W16x45 columns on approximately 5"-8" centers connected to a horizontal W16x45 member with welded moment connections. Above the second floor, diagonal bracing consisting of TS6x4x1/4 tubes were located between window openings. The diagonal tubes were located within the steel stud wall.

During the demolition of the brick wall, the existing wood framing was shored to the ground and laterally braced with steel cables. The wood floor joists were then connected to the new steel beams with continuous steel bearing plates and standard steel strap anchors.

Wm. Barton Wallis, P.E., is a vice president with Bliss & Nyitray, Inc., a consulting engineering firm headquartered in Miami.

A Quick Quiz For Structural Engineers

The more a computer program costs, the better it is.

TRUE FALSE

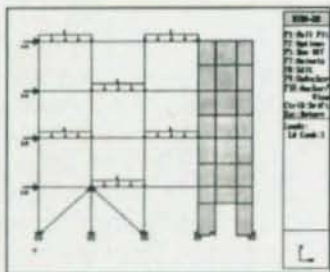
A program that solves complex, difficult problems must be complex and difficult to use.

TRUE FALSE

Structural engineering software can never be fun to use.

TRUE FALSE

If you answered *TRUE* to any of the above, or you would like to know more about a truly innovative software program, call us!



RISA-2D

Your complete solution for frames, trusses, beams, shear walls and much more!

RISA
TECHNOLOGIES

26212 Dimension Drive, Suite 200
Lake Forest, CA 92630
1-800-332-7472

MERLIN DASH NEW VERSION 4.5

Design & Analysis of Straight Steel Girder Bridges

- ✓ AASHTO — 1991 Interim
- ✓ FHWA — Endorsed and Used by
- ✓ DOT's — Used by Most States
- ✓ Design — New Capability
- ✓ Menu-Driven Input — Very Easy
- ✓ Graphics Display of Output
- ✓ Output Report Selection

IBM-PC Compatible
Free Trial Period

MICROBARS

Micro-Computer Bridge Analysis & Rating System

- ✓ Derived from Original BARS Program
- ✓ Compatible with DOT's Structural Databases
- ✓ Rates All Conventional Member Types
- ✓ Considers All Construction Materials

DESCUS I & II

CURVED GIRDER ANALYSIS & DESIGN
...and other quality bridge software and time-sharing services

Available Exclusively Thru:

(215) 867-4077



OPTI-MATE

P. O. Box 9097, Dept. A, Bethlehem, PA 18018

61600

How to get from here



Estimating Module



Engineering, Analysis
and Design Module



Detailing Module



Production Control
Module



CNC Interface
Module

to here.



Design Data's SDS/2 Steel Fabrication System.

SDS/2 gives you the flexibility to integrate all aspects of your business with one software system. That concept is called Information Management. Each module by itself will save you time and money and by combining products to implement Information Management you receive more than twice the benefit in savings and productivity. So whether you need one SDS/2 software module or all these tools working together, Design Data can provide the most productive system for you.

For more information about SDS/2, information management in the steel industry or future product demonstrations call **800-443-0782**.

**DESIGN
DATA**

"First in...software, solutions, service"
402-476-8278 or 1-800-443-0782

© 1992 Design Data Corporation

Switch To Steel Saves \$1 Million

Redesigning a mixed-use project speeded construction and substantially reduced construction costs



When John Ciardullo—a practicing architect with formal training and practical experience in structural engineering—first saw the plans for a new multi-use building in Manhattan, he knew a redesign would save money.

The 22-story mixed-use building features retail on the first two stories, two gymnasiums—one stacked on top of the other—for a nearby prestigious private high school on the middle five floors, and residential space on the upper fifteen floors. As with so many residential projects, the original designer automatically specified concrete without pricing a steel alternative.

Fortunately, Ciardullo, principal of John Ciardullo Associates in New York City, was in the developer's office on other business and noticed the plans. Ciardullo has an undergraduate degree in civil engineering and worked as a structural engineer for five years before getting advanced degrees in architecture. "What I can do that most other architects can't is to redesign structural plans," he explained.

Because New York City code requires setbacks above 150' and because the two stacked gyms required large column-free areas, Ciardullo realized that steel might be a more economical approach for the project. The original design included massive concrete transfer beams, and Ciardullo was convinced that steel could do the job with less bulk and cost. With the owner's permission, he contacted the Steel Institute of New York,

00920

which in turn referred the problem to AISC Marketing, Inc., in Pittsburgh.

Within two weeks, AISC Marketing sent Ciardullo a preliminary design study. Included were steel requirements as well as several sketches showing proposed beam, column and bracing member framing. Based on AISC Marketing's proposal and Ciardullo's calculations, the owner agreed to a steel redesign.

The redesigned structure consists of flat slab concrete construction on the two bottom retail floors with steel framing above. On the third to eighth floors, a steel frame with a 2" metal deck was used. The project's engineer, Andrew Gyimesi of New Hope, PA, designed composite construction through the eighth floor to ensure the smallest member sizes. Spray-on fireproofing was used on the lower floors. Altogether, the project used 1,400 tons of steel.

For the most part, the lower floors are designed for gravity loads. "The wind in the short direction is taken up by an internal wall with diagonal bracing, while the wind in the long direction on the lower floors is taken up by diagonal bracing up to the eighth floor in an exterior wall abutting a neighboring building," Ciardullo explained.

The framing for floors three through eight were complicated by the two column-free gyms. On the eighth floor, three 70' long, 98" deep plate girders support the load of the residential floors above. "We started by designing a truss, but after meeting with the fabricator, we determined it would be less expensive to use a plate girder," Gyimesi explained. These steel girders, with 5" x 33" flanges are a far cry from the 10' wide by 9' deep reinforced concrete girders specified in the original design. At the fifth floor, six plate girders support the load of the gym above.

Due to their large size, great care was needed for the delivery and erection of the plate girders. "The city allows us to close one lane on the adjacent road for our crane," explained Don Whittemore, project



manager with AISC-member Canon Construction Corp., the project's fabricator and erector. "In addition, they allow us to selectively close a second lane with prior approval." The largest members were trucked in—one at a time in a carefully sequenced process—early on a Saturday morning. As erection began on one, the next would arrive for off-loading.

Above the eighth floor, the steel frames support prestressed concrete planks—a construction method not used in New York City since the 1930s. "We considered a concrete slab, but a plank system was much more economical," Ciardullo explained.

The 8"-thick by 8'-wide precast planks are prestressed and therefore could not be welded at the bottom. Instead, the planks have

In addition to reducing the construction cost, the steel frame simplified the design and construction of the building's code-required setbacks. Photography by Jack Brennan

embedded top plates that are welded to the columns, Gyimesi said. "Of course, only the planks that touch columns are welded to them. The rest of the planks are welded to each other at the 1/3 and 2/3 points of their lengths." By tying the planks together, the design provides a diaphragm to transfer loads. Fireproofing on the upper floors is provided by sheetrock.

The residential apartments

range in sized from studio efficiencies to luxurious four-bedroom units. The design and layout of each unit is effected by its location within the building.

This project was one of the first designed under a new zoning code requiring setbacks on projects over 150'. Therefore, every second level above the fifteenth floor was recessed—which created a terrace on every other floor.

Each setback required a load transfer, which, of course, was easier to manage with steel rather than concrete. For this project, the transfers were handled by slightly increasing the beam size in the east-west direction.

Substantial Savings

To save time, the contractor opted to have the beams and columns fabricated as one piece to further speed erection. General contractor on the project was Marson Construction Co., Bronx, NY.

These "tree columns" resemble double crosses and their use substantially speeds erection by transferring work to the shop where controlled conditions make connections simpler and faster. The tree columns, in turn, were bolted together at the center of the beams, which allowed them to act as a huge Vierendeel truss.

The exterior of the building is clad in brick, with strip windows to break up the vertical massing of the building and create horizontal movement. This movement is interrupted by large vertical insets at the center of both street-facing facades. Overall, the brick detailing and window arrangements—combined with the recessed terraces, accentuates the apartment arrangements and creates a notable presence for the building.

Ciardullo estimates that switching from concrete to steel reduced the cost of the \$23 million project by \$1 million. In addition, the weight of the structure was reduced by 30%.



The BURCO STUD PAK

TOWABLE ARC STUD WELDING SYSTEMS
STANDARD AND XL 100
With
SW 3000 POWER SUPPLY

An Innovative Engine Drive Concept with capacities to handle up to 7/8" Studs.

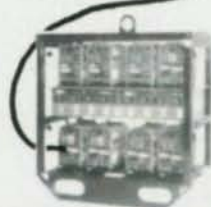
UP TO 600 Ft. EXTENSION CABLE LENGTH POSSIBLE.

OUR TRADEMARK —
DURABILITY, QUALITY
AND RELIABILITY!



STANDARD

The
BURCO STUD PAK
XL 100
provides
110kVA
continuous power output
for 6 and 8 pack
welding applications
including inverters



- **Low Profile** - Only 56" High
- **Low Weight** - Only 4,400 lbs.
- **Convertible** to skid mounted at the job site.
- **Cost** about 30% lower than conventional systems.

An Engine Drive Design
CMA Alternator
Fully Equipped for
User Comfort



BURCO

Welding & Cutting Products Inc.

BOX 2115 • 530 CHAPEL HILL ROAD • TEL. 919-227-2737 FAX NO. 919-228-0760
BURLINGTON NORTH CAROLINA 27215 U.S.A.

Bearing Pad Design

Voss Engineering Inc. has published a new structural bearing pad design handbook. The handbook describes the performance characteristics of Sorbtex and Fiberlast for thicknesses 1" and greater. Also included in the publication is a description of the performance of Voss slide bearings. The handbook is the result of an extensive testing program and includes test results as well as design equations and tables. This data allows the design engineer, architect and detailer an opportunity to make design decisions based on material performance.

A bearing pad design computer program also is available. The program allows the user to design Sorbtex, Fiberlast and Voss slide bearings using an IBM PC or compatible computer.

For more information, contact: Voss Engineering Inc., 6965 Hamlin Ave., Lincolnwood, IL 60643 (708) 673-8900; fax (708) 673-1408.

Bridge Rehabilitation

Lubrite self-lubricating bearings accommodate expansion, contraction and rotation of structural members—without maintenance or supplementary lubrication. The bearings also are unaffected by temperature extremes, immersion and/or corrosion. The company produces bearings for a wide variety of applications: flat expansion plates are designed to accommodate expansion and contraction in a single plane; radius plates are flat on one face and either concave or convex on the opposite face, with the radius plate accommodating the deflection or rotation of the structural member and the flat face providing for linear expansion and contraction; and spherical plates provide for rotation or deflection in any direction as well as normal expansion and contraction. All bridge bearings can be supplied in standard Lubrite or Lubrite F 100% tef-

lon fiber mat, which offers a very low 0.03 coefficient of friction. The company offers a wide variety of completed assemblies, as well as design assistance. Also, quick turnaround is provided, which is particularly helpful in rehabilitation work.

For more information, contact: Merriman, 100 Industrial Park Road, Hingham, MA 02043 (617) 749-5100.

Dynamic Isolation

A bridge is a dynamically loaded structure that must perform reliably throughout its lifetime when subjected to a variety of non-seismic short-term and long-term forces. DIS Force Control Bearings promote superior structural performance under these non-seismic conditions, while also preventing earthquake damage and downtime.

For more information, contact: Dynamic Isolation Systems, Inc., 2855 Telegraph Ave., Suite 410, Berkeley, CA 94705 (510) 843-7233; fax (510) 843-0366.

Structural Bearing Product Information

The Wabo-Fyfe Structural Bearing from Watson Bowman Acme is designed for heavily-trafficked bridge structures with movement capabilities from 3" to 30". Simply put, it works by dividing large movement into multiple 3" segments. Each 3" module has individual steel support beam mechanism, rigid welded connection and double-walled neoprene sealing element to protect against water and chloride intrusion. The counterforce control mechanism allows the modular system to move in harmony with the thermal expansion and contraction of the structure. This accordion-like design exhibits a long maintenance-free life and protects substructural steel from corrosion. The product features smooth riding surfaces,

equidistance control and controlled folding movements.

For more information, contact: Watson Bowman Acme, 95 Pineview Dr., Amherst, NY 14228-2166 (716) 691-7566; fax (716) 691-9239.

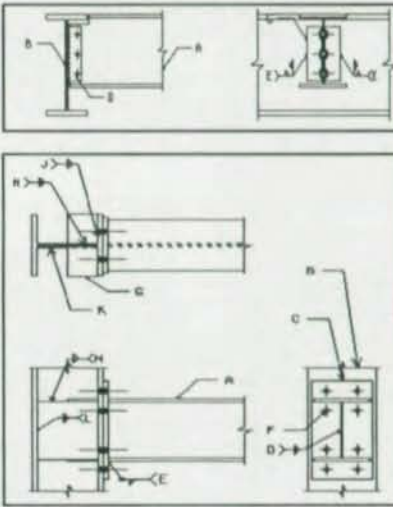
Expansion Joints

Eva-zote 380 ESP from E-Poxy Industries, Inc., is a closed cell, nitrogen blown foam material that handles 60% compression and 30% tension. This expansion joint material also has UV stabilizers added, giving it excellent resistance to ultra-violet rays. When used in conjunction with Eva-Pox Bonder, a waterproof joint is obtained.

For more information, contact: E-Poxy Industries, Inc., 14 West Shore St., Ravena, NY 12143 (518) 756-6193.

DESCON

DESIGNS AND DETAILS STEEL CONNECTIONS



FOR A FREE DEMO DISK
CALL OR WRITE TO

OMNITECH ASSOCIATES
P.O. BOX 7581
BERKELEY, CA 94707
(510) 658-8328

STEEL MARKETPLACE

Help Wanted—Senior Estimator Position

Verstle Structural Steel Fabrication Facility located in Tigard, Oregon, is seeking an experienced Senior Estimator with a minimum of six years experience in take-off, laboring and complete job costing. Computer experience is a plus! We offer a competitive salary and broad-based benefit program.

Please submit your resume with references to:
P.O. Box 23759
Tigard, OR 97281

BDS STEEL DETAILERS

Having trouble finding good detailers? Ask our overseas clients what they think of us!

"They have submitted prices consistently which are economic and have aided us to obtain a substantial share of the market!"

"They are used to working with companies at a fair distance away from their home (BDS) base."

For complete steel detailing, contact:

BDS Steel Detailers 8925 Folsom Blvd., Suite T Sacramento, CA 95826	BDS Steel Detailers 600 E. Carpenter Freeway, #190 Irving, TX 75062
---	---

916/368-1666 214/541-1065

Engineering Journal

The only technical magazine in the United States devoted exclusively to the design of steel structures, the AISC Engineering Journal provides structural engineers, architects, fabricators and educators with the latest information on steel design, research, and construction.

For a one-year, U.S. subscription, send \$15 to:

American Institute of Steel Construction, Inc. (312) 670-2400
P.O. Box 806276
Chicago, IL 60680-4124

LRFD Floor Design Software

NEW - A unique and reliable knowledge-based system for designing Composite and Non-Composite beams and girders with Steel Deck using fully documented AISC rules.

Design a Complete Bay. Incorporate the use of all grades of steel or concrete. Get live loads, dead loads and line loads. Specify tributary area loading and concentrated loads. Set deflection limits. Specify code area reductions. PLUS MUCH MORE.

Steel Deck Institute — phone/fax 216/493-7886
P.O. Box 9506, Canton, Ohio 44711

Order by: Visa/Mastercard/Check - @ \$295.00 ea.

"The Complete Design Toolbox for the Steel Designer"

A "power" collection of 60 of SAF's most useful structural analysis and design programs that allows complete steel design, per the AISC Spec 9th Edition. Analyzes and designs simple and continuous beams (20 spans), composite beams and column stacks (unlimited # of floors), as well as frames and trusses (400 joints, 600 members). AISC W, S, M, tube and pipe shapes are all stored on disk files to facilitate final shape selections. Beam and column programs store and recall beam reactions, and allow multiple member designs in a single run, to provide the design of entire framing systems in the fewest possible number of runs. **Steel Designer** has been designed for steel construction projects. This package consists of 17 design programs, 10 analysis programs, 6 graphics programs, and one set of drawing files for steel structures. Each analysis/design program has an associated "TALK" program. **CALL FOR FREE CATALOG.**

Structural Analysis Inc. — (407) 394-4257
555 South Federal Highway, Suite 210, Boca Raton, FL 33432

CLASSIFIED ADS

Reach 35,000 engineers, fabricators, architects, contractors, bridge officials and building owners inexpensively with a classified advertisement in Modern Steel Construction. It's fast and easy—we'll even do the typesetting for you at no charge.

For rate and placement information, call:
Marci Lynn Costantino or Greg Poland at (708) 679-1100.
Or fax them a note at (708) 679-5926.

CBRIDGE—3-D Bridge Analysis/Design Software Straight or Curved Bridges

CBRIDGE, the Syracuse University 3-D Bridge Analysis/Design program for the IBM-PC, provides rigorous 3-D analysis for both simple and complex highway and rail bridges. Includes graphic geometry generator, custom vehicle loads up to 30 axles, modular reports and on-line help. Call or write for information and a FREE demo disk.

TELOS Technologies — (315) 471-0113
1201 East Fayette St., Syracuse, NY 13210

Free Software Catalog For Structural Steel Detailers & Fabricators Quality - Affordable - PC Software

Steel Detailing with or w/out a CAD interface, 10 integrated calculator programs designed for detailers & checkers, job estimates, bills of materials, length cutting lists, shipping lists & nesting, residential and light commercial structural design, analysis of continuous beams (steel, wood or concrete), finite element analysis, project management, accounting.

NES, Inc., P.O. Box 2014, El Segundo, CA 90245
800-637-1677 (phone) - 310-546-7158 (fax)

Advertiser's Index

AISC Software	CIII
Bethlehem Steel	28-29
Nicholas J. Bouras	CII
Burco	40
Chaparral Steel	14-15
Computer Detailing	21
Computers & Structures, Inc.	CIV
Design Data	37
Jobber III	19
Merriman	11
National Steel Construction Conference	8
Omnitech	41
Optimate	36
RISA	36
Research Engineers	7
St. Louis Screw & Bolt	18
Steel Deck Institute	12
Steelcad International	32
Structural Software	3
TradeARBED	5
Vulcraft	22-23
Max Weiss	27

AISC Database

The AISC Database contains properties and dimensions of structural steel shapes, corresponding to Part 1 of the 1st edition *LRFD Manual of Steel Construction* and the 9th edition *ASD Manual of Steel Construction*. Two versions, one in U.S. customary units and one in metric units, are available. Please specify.

The computer database, in ASCII format, contains W, S, M, and HP shapes, American Standard Channels (C), Miscellaneous Channels (MC), Structural Tees cut from W, M, and S shapes (WT, MT, ST), Single and Double Angles, Structural Tubing, and Pipe

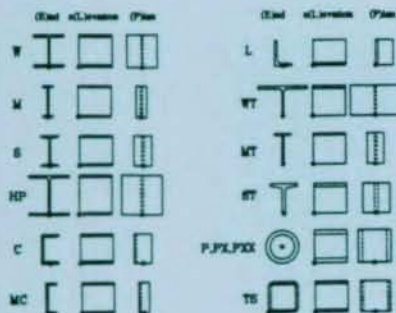
An explanation of variables specified in each data field is included as are a BASIC read/write program and a sample search routine by which the database may be manipulated, and a routine to convert the file to Lotus 1-2-3 format. Additionally, the metric version includes a text file which cross references the ASTM designations in SI units to U.S. customary units.

Available on 3" or 5" disk. **\$60.00**

AISC for AutoCAD

Save time! Have AISC shapes drawn at your command with AISC for AutoCAD (Release 10 and above). It draws shapes and lists properties corresponding to data published in Part 1 of the 1st edition *LRFD Manual of Steel Construction* and the 9th edition *ASD Manual of Steel Construction*.

The program will parametrically draw to full scale the end, elevation, and plan views using the design dimensions of the shapes shown below.



Available on 3" or 5" disk. **\$120.00**

AutoCAD is a registered trademark in the US Patent and Trademark Office by Autodesk, Inc.

AISC for AutoCAD is copyrighted in the US Copyright Office by Bridgeman and Associates, Inc.

AISC Software



to place an order, call
(312)670-2400

STEMFIRE

STEMFIRE determines safe and economical fire protection for steel beams, columns, and trusses. STEMFIRE is based on rational procedures developed by AISI which extend the published UL fire resistive designs to other possible rolled structural shapes and common protection material requirements. For a required fire rating, STEMFIRE determines the minimum spray-on thickness for various rolled shapes as well as the ceiling membrane or envelope protection for trusses. This methodology is recognized by UL and has been adopted by the three national model building codes in the USA.

The software database contains all pertinent steel shapes and many listed UL *Fire Resistance Directory* construction details and fire ratings. In this manner, user search time is minimized and the design and checking of steel fire protection is optimized. Hence, STEMFIRE is easy to use with little input effort to quickly produce specific design recommendations. Two 5" disks containing executable software bearing AISC copyright and a users manual with instructions and sample problems are included with purchase.

Available on 5" disk only. **\$96.00**

CONXPRT

CONXPRT is a knowledge based PC software system for steel connections. Expert advice from long-time fabricator engineers is used to augment the design rules. CONXPRT incorporates provisions to set dimensional and material defaults for a particular project or general shop needs. Additionally, CONXPRT is menu driven and incorporates help screens designed for easy use.

Module I: Shear Connections

Available in either 1st edition LRFD or 9th edition ASD format. Designs more than 80 configurations of double framing angles, shear end plates, and single plate shear connections is possible.

Module II: Moment Connections

Available in 9th edition ASD format only. Provides a set of four knowledge bases for the design of strong axis moment beam-to-column flange connections; direct welded, flange welded-web bolted, flange plate welded-web bolted, and flange plate bolted-web plate bolted connections. Additionally, a knowledge base for the column side design of web stiffener plates and doubler plates is a part of the module.

Available on 3" or 5" disk.

Module I ASD or LRFD **\$300.00**

Module I ASD & Module I LRFD **\$550.00**

Module II ASD **\$400.00**

WEBOPEN

WEBOPEN is designed to enable engineers to quickly and economically design beam web openings. An expedient tool, WEBOPEN uses state of the art criteria and features a clear and logical data entry system with easy to use color coded input windows. Furthermore, WEBOPEN accesses a shape database allowing the selection of any W, S or M shape for use in the design procedure.

WEBOPEN was written by practicing engineers for engineers and incorporates expert design checks and warning messages which enhance the application of the AISC Design Guide to specific design problems. Using this software, unreinforced or reinforced, rectangular or round openings, concentric or eccentric, in both composite and non-composite steel beams may be designed. The design is complete with stability and proportioning checks. Additionally, the design is optimized through user interaction during the design sequence. Included with purchase are the WEBOPEN program, the WEBOPEN Users Manual and the AISC Design Guide *Steel and Composite Beams with Web Openings*

Available on 3" or 5" disk. **\$495.00**

ETABS[®]
Building Analysis & Design

STATE OF THE ART

SAP90[™]
General Analysis & Design

STRUCTURAL STEEL DESIGN SOFTWARE

STRUCTURAL ENGINEERING • EARTHQUAKE ENGINEERING

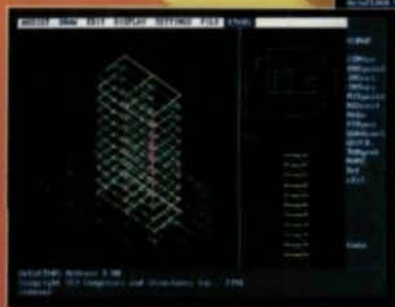
AISC ASD '89 • AISC LRFD '86 • UBC '91

INTEGRATED ANALYSIS
& DESIGN SOFTWARE
FOR STEEL STRUCTURES

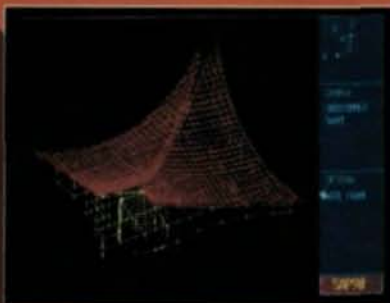
By: Ashraf Habibullah
& Edward L. Wilson



Composite Floor Design



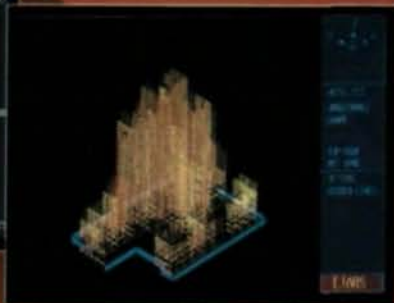
Integrated with CAD



Complex Space Trusses



Eccentrically Braced Frames



Highrise Moment Frames



Automated Stress Checks



Structural Dynamics



For more information:
Computers & Structures, Inc.
1995 University Avenue
Berkeley, California 94704
TEL: (510)845-2177
FAX: (510)845-4096

ETABS is a registered trademark of CSI.
SAP90 is a trademark of CSI.
© 1992 Computers & Structures, Inc.