

# MODERN STEEL CONSTRUCTION

December 1993

\$3.00



Shop Painting:  
Myths vs.  
Realities

# NEW COLUMBIA JOIST CO.

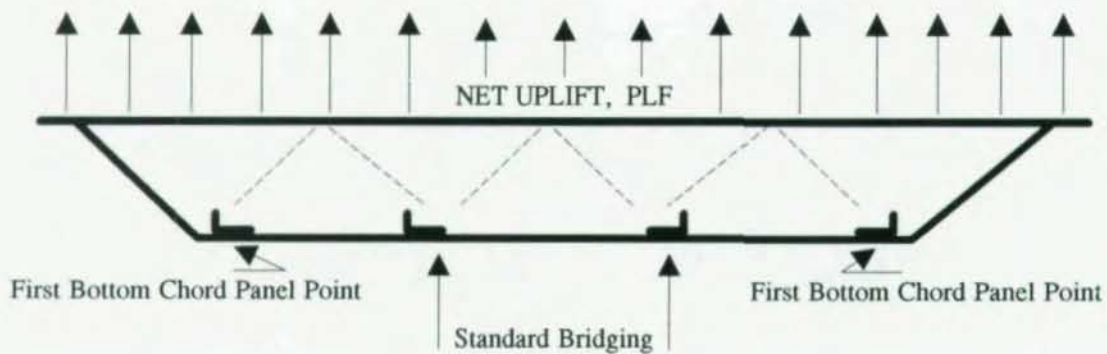
P.O. Box 31 • New Columbia, PA 17856-0031  
717-568-6761 • 717-568-1001 (FAX)

JOIST DESIGN DATA SHEET

No. 2

## HOW TO DESIGN FOR WIND UPLIFT

Wind uplift forces must be determined by the design professional and shown on the contract drawings as NET UPLIFT. (The net uplift force on the roof joist is the gross uplift minus the dead load including the joist weight.) This temporary reversal of loading creates compression forces in the bottom chord which, as a result, may require lateral bracing. The Steel Joist Institute (SJI) recognizes this by specifying a single line of bridging near the first bottom chord panel point to brace the bottom chord. The remainder of the bottom chord must be checked by the joist company (NCJ) to see if the SJI standard bridging is sufficient to brace the members in compression. The webs (diagonal members) of the joist can also be subject to stress reversal and this may require a reduction in the end panel space to accommodate the resulting compression in the end web. Thus the web layout may change from the standard dimensions published in the NEW COLUMBIA JOIST COMPANY catalog. The modified joist model is checked for the normal downward loading of the dead plus live loads and the worst case is used to determine the joist components.



NICHOLAS J. BOURAS, INC.  
P.O. BOX 662, 475 SPRINGFIELD AVE.  
SUMMIT, NEW JERSEY 07902-0662 (908) 277-1617



910636



**HISTAR** 

**A new generation  
of rolled beams  
and column shapes  
for economical  
steel construction.**

Once again, ARBED leads the industry by featuring a trendsetting combination of mechanical, chemical and technological properties:

- HIGH YIELD STRENGTHS (up to 65 KSI) - even for ultra-heavy sections.
- OUTSTANDING TOUGHNESS PROPERTIES.
- EXTREMELY LOW CARBON EQUIVALENT — ensures excellent weldability.

**A NEW PROCESS... QST.**

The secret is in ARBED's revolutionary new in-line QST process.

**OTHER RECENT ARBED INNOVATIONS:**

ARBED-ROLLED 40", 44", and "TAILOR-MADE" (WTM) series — famous for high section moduli, great lateral buckling resistance, and big savings in fabrication costs and weights. These products are also available in the new HISTAR quality as is our standard WF series and H BEARING PILES.

**NEW LITERATURE AVAILABLE**

Send now for complete data on all these ARBED products, contact Trade ARBED, INC., 825 Third Ave., New York, NY 10022. (212) 486-9890, FAX 212-355-2159/2421. In Canada: TradeARBED Canada, Inc., 3340 Mainway, Burlington, Ontario, Canada L7M 1A7. (416) 335-5710, FAX 416-335-1292.

**TRADE ARBED** Inc.

**INNOVATORS OF STEEL CONSTRUCTION PRODUCTS.**

# MODERN STEEL CONSTRUCTION

Volume 33, Number 12

December 1993



Eric Kline and James Machen from KTA-TATOR take a look at some commonly held myths about shop painting in a story beginning on page 32. Photo courtesy of Tnemec Co.

## FEATURES

- 16 ADVANCED CONNECTIONS REDUCE COSTS**  
*A series of new connections under development at the ATLSS Center have the potential to substantially reduce erection time*
- 24 ELIMINATING OVERSPECIFIED SIMPLE CONNECTIONS**  
*Showing actual reactions on drawings can substantially reduce connection costs*
- 26 MARKETING BETTER DESIGN**  
*A small California structural engineering firm uses its computer expertise to attract new business*
- 32 SHOP PAINTING: MYTH VS. REALITY**  
*A look at what is practical, cost-effective and necessary within the painting industry*
- 39 MECHANICAL FASTENING TAKES HOLD**  
*While welding has a proven track record, mechanical-fastening systems are gaining in popularity*

## DEPARTMENTS

- 6 EDITORIAL**
- 9 STEEL INTERCHANGE**
- Fatigue
  - Out-of-plane buckling
  - Pin-holes
  - Foreign specifications
- 12 STEEL NEWS**
- Finding low cost bay design
  - New publications from SSRC
- 38 PAINTING PRODUCTS**
- 40 DECK PRODUCTS**
- 41 STEEL MARKETPLACE**
- 41 ADVERTISER'S INDEX**

Modern Steel Construction (Volume 33, Number 12). ISSN 0026-8445. Published monthly by the American Institute of Steel Construction, Inc., (AISC), One East Wacker Dr., Suite 3100, Chicago, IL 60601-2001.

Advertising office: Pattis/3M, O'Hare Lake Office Plaza, 2400 E. Devon Ave., Des Plaines, IL 60618 (708) 699-6030.

Subscription price:  
Within the U.S.—single issues \$3;  
3 years \$85.  
Outside the U.S.—single issues \$5;  
1 year \$36; 3 years \$100.

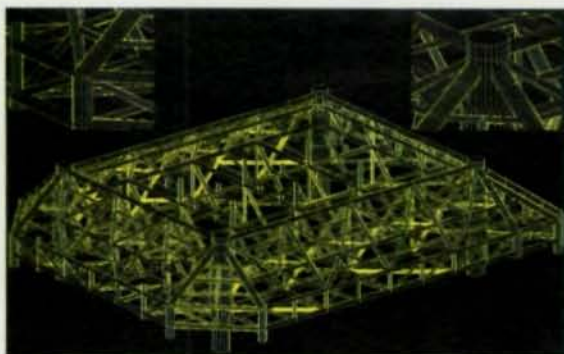
Postmaster: Please send address changes to Modern Steel Construction, One East Wacker Dr., Suite 3100, Chicago, IL 60601-2001.

Second class postage paid at Chicago, IL and at additional mailing offices.

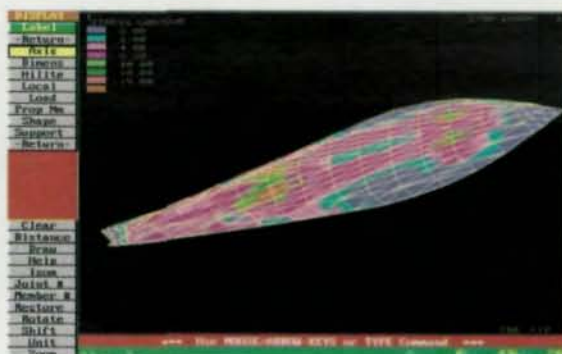


# STAAD - III / ISDS

## Structural Software For The Nineties



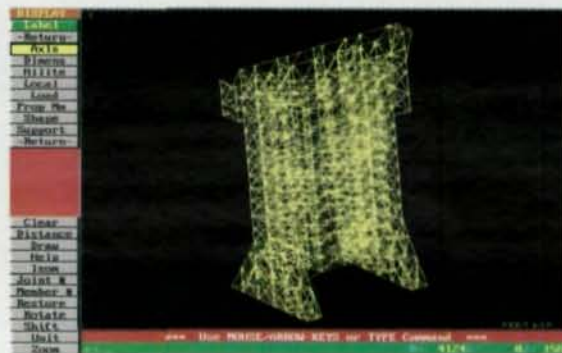
Offshore structure. Courtesy AKER Engineering, Norway



Concrete Canoe. Courtesy Drexel University, Pennsylvania



Roller Coaster. Courtesy Arrow Dynamics, Utah



NASA Launch Pad. Courtesy Brown & Root, Texas

### True State-Of-The-Art

- The STAAD-III plate element, based on nineties' hybrid formulation technology, incorporates out-of-plane shear and in-plane rotation with highest possible numerical balance. It is a result of two decades of collaborative research with universities in North America and Europe.
- Innovative Non-linear analysis algorithms incorporate both geometric stiffness and load vector corrections with user specifiable no. of iterations.
- Powerful yet simple-to-use Dynamic Analysis algorithms implement response spectrum and time domain solutions with combination of static loads for design.
- Integrated Load Generation facilities allow generation of Moving loads, UBC seismic, Wind loads, Floor/Area loads, Wave loads and hydrostatic loads with unbelievable speed, ease and accuracy.
- State-of-the-art database organization utilizes object-oriented programming techniques with automatic and integrated flow of information - meaning multiple analysis, optimized design and post-processing are as flexible as it could be.
- Integrated implementation of AISC ASD/LRFD, ACI, AITC and all major international codes for STEEL/CONCRETE/TIMBER design provides fast and comprehensive solution to all your design needs.
- Automatic & Seamless CAD integration allows model generation, analysis/design and drafting - all within the CAD environment. A productivity concept never witnessed before in the structural software industry.

STAAD-III/ISDS - from Research Engineers - is an acknowledged world leader in structural software. Whether it is finite element technology or sophisticated dynamic analysis or CAD integration, Research Engineers has always been at the forefront of innovation.

No other company has such a breadth of knowledge and experience in leading-edge engineering and computer technology. Our deep rooted Research & Development base, spread over four continents, brings the world's best minds to you. Our association with leading educational and research institutions worldwide allows us to build the most solid technological foundation possible for our products.

You can rely on Research Engineers when it comes to innovations in structural engineering software. With over 10,000 installations, more than 30,000 engineers worldwide rely on the power of STAAD-III/ISDS as their everyday companion in the design office.

**STAAD-III/ISDS - the true state-of-the-art.**



**Research Engineers, Inc.**

1570 N. Batavia Street, Orange, California 92667  
Tel: (714) 974-2500 Fax: (714) 974-4771

- USA ● UK ● GERMANY ● FRANCE ● CANADA
- NORWAY ● INDIA ● JAPAN ● KOREA



# More Steel Info

## Editorial Staff

Scott Melnick,  
Editor and Publisher  
Patrick M. Newman, P.E.  
Senior Technical Advisor  
Charlie Carter,  
Technical Advisor

## Editorial Offices

Modern Steel Construction  
One East Wacker Dr.,  
Suite 3100  
Chicago, IL 60601-2001  
(312) 670-5407  
Fax 312/670-5403

## Advertising Sales

Pattis-3M  
O'Hare Lake Office Plaza  
2400 E. Devon Ave.  
Des Plaines, IL 60018  
(708) 699-6030  
Fax 708/699-6031

## AISC Officers

Frank B. Wylie, III,  
Chairman  
Robert E. Owen,  
First Vice Chairman  
H. Louis Gurthet,  
Second Vice Chairman  
Robert D. Freeland,  
Treasurer  
Neil W. Zundel,  
President  
David Ratterman,  
Secretary & General  
Counsel  
Lewis Brunner,  
Vice President,  
Membership Services  
Geerhard Haaijer,  
Vice President,  
Technology & Research  
Morris Caminer,  
Vice President,  
Finance/Administration

If you enjoy reading the "Steel Interchange" section in this magazine, you'll probably also like reading *Steel Inspection News*, a bimonthly newsletter published by the Steel Structures Technology Center. In addition to information on such topics as alternate weld specifications and the Fastener Qualification Assurance Act, the newsletter offers advice on common design problems.

For example, on page six of the September issue, there's a discussion on whether you can substitute an SAE Grade 5 for an A325. Two pages later, the newsletter handles the topic of deck penetrations: "You know the problem. The roof deck or floor deck has been installed by the decking contractor, perhaps even inspected and approved. Then those darn mechanical contractors come along and start cutting holes everywhere for their vents, conduit, piping and such. The engineers on the project have tried to provide mechanical chases and framed openings, but it's never enough. The question is—how big a hole may I tolerate, and how do I go about repairing or reinforcing the opening?"

A one-year subscription costs \$36, while a two-year subscription is \$60. For more information, contact: Steel Structures Technology Center, Inc., 40612 Village Oaks Dr., Novi, MI 48375-4462 (313) 344-2910; fax (313) 344-2911.

While *Steel Inspection News* will help you with your every day practice, if you want to stay on the cutting edge of steel design, I recommend a subscription to the AISC's quarterly *Engineering Journal*. The first three issues of 1993 presented such subjects as: "Serviceability Limit States Under Wind Load," "Design Strength of Centrally Loaded Single Angle Struts," "The Warping Constant for the W-Section with a Channel Cap," "Simple Equations for Effective Length Factors," "Design of Pipe Column Base Plates Under Gravity Load," "Strength of Shear Studs in Steel Deck on Composite Beams and Joists," "Composite Girders with Partial Restraints: A New Approach," "Shear Lag Effects in Steel Tension Members," and "Design Aid of Semi-Rigid Connections for Frame Analysis."

Of course, *EJ* also features some articles of immediate use. For example, in the 3rd Quarter of 1993 there was a feature on "A Tentative Design Guideline for a New Steel Beam Connection Detail to Composite Tube Columns." And in the 2nd Quarter of 1993, there was an article detailing "SI Units for Structural Steel Design."

A one-year subscription to *EJ* is only \$15 (within the U.S.), while a three-year subscription is \$36. Payment can be sent to AISC, P.O. Box 806276, Chicago, IL 60680-4124.

To further whet your appetite, we're reprinting an article from the 1st Quarter of 1993, "The Economic Impact of Overspecifying Simple Connections," beginning on page 24. Good reading. **SM**



# THE POT OF GOLD...

Canam's quality and service for

## GRAND CASINO



Grand Casino Inc. - Gulfport, MS  
PHOTOS: FOTOWERKS/miller c. henry & assoc.

Owner: **Grand Casino Inc.** • Architect: **Cunningham Hamilton Quiter, PA**  
Structural engineer: **Reigstad & Assoc., Inc.** • Contractor: **Roy Anderson Corp**  
Steel fabricator: **Ellis Steel Co., Inc.** • Steel erector: **Bracken Const.**

Winning the pot of gold is the target of any gambler. But building a casino like the Grand Casino in Gulfport, MS, is not a question of luck.

Grand Casino is a unique construction project, more a boat than a building. The design considerations took into account a floating foundation, including hurricane storm factors. Utilizing a steel design minimized structural weight for this three level structure. Canam Steel submitted a cost-saving alternative of angle chord bowstring trusses in lieu of the original tube steel design.

Ellis Steel of West Point, MS, was the steel fabricator who selected Canam Steel to design and manufacture the bowstring roof trusses, as well as two floors of long span joists, totalling over 500 tons.

Gordon H. Reigstad, Ph.D., P.E., states "the time schedule for this project called for construction to be completed in 153 days. To accomplish the owner's request for this aggressive schedule, it was necessary that everyone work as a team. Canam's capability in providing expedited service with its prompt turnaround on

fabrication and delivery is a credit to this team effort."

Canam Steel's engineering and production capabilities allow us to handle a wide array of requirements. That's why Canam Steel Corporation is the Fabricators' fabricator.

 **canam**steel  
Corporation



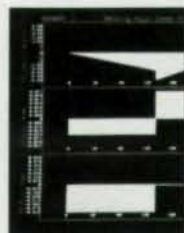
Arizona, Mesa 602-892-2555 • Florida, Deerfield Beach 305-428-9008 • Illinois, Bolingbrook 708-759-7800 • Indiana, Lafayette 317-477-7764  
Kansas, Overland Park 913-384-9809 • Maryland, Baltimore 410-472-4327 • Maryland, Brunswick 301-834-7067 • Maryland, Point of Rocks 301-874-5141  
Massachusetts, Easton 508-238-4500 • Michigan, Flint 313-653-3506 • Minnesota, Delano 612-972-6135 • Missouri, Washington 314-239-6716  
New York, Marcellus 315-673-3456 • Pennsylvania, Chambersburg 717-263-7432 • Tennessee, Memphis 901-763-0266 • Virginia, Virginia Beach 804-479-1828



# How to get from here



Estimating Module



Engineering, Analysis  
and Design Module



Detailing Module



Production Control  
Module



CNC Interface  
Module

# to here.



## Design Data's SDS/2 Steel Fabrication System.

SDS/2 gives you the flexibility to integrate all aspects of your business with one software system. That concept is called Information Management. Each module by itself will save you time and money and by combining products to implement Information Management you receive more than twice the benefit in savings and productivity. So whether you need one SDS/2 software module or all these tools working together, Design Data can provide the most productive system for you.

For more information about SDS/2, information management in the steel industry or future product demonstrations call **800-443-0782**.

**DESIGN  
DATA**

"First in...software, solutions, service"  
402-476-8278 or 1-800-443-0782

© 1992 Design Data Corporation



# Steel Interchange

*Steel Interchange* is an open forum for *Modern Steel Construction* readers to exchange useful and practical professional ideas and information on all phases of steel building and bridge construction. Opinions and suggestions are welcome on any subject covered in this magazine. If you have a question or problem that your fellow readers might help you to solve, please forward it to *Modern Steel Construction*. At the same time, feel free to respond to any of the questions that you have read here. Please send them to:

**Steel Interchange**  
**Modern Steel Construction**  
**One East Wacker Dr., Suite 3100**  
**Chicago, IL 60601-2001**

Answers and/or questions should be typewritten and double-spaced. Submittals that have been prepared by word-processing are appreciated on computer diskette (either as a Wordperfect file or in ASCII format).

The opinions expressed in *Steel Interchange* do not necessarily represent an official position of the American Institute of Steel Construction, Inc. and have not been reviewed. It is recognized that the design of structures is within the scope and expertise of a competent licensed structural engineer, architect or other licensed professional for the application of principals to a particular structure.

Information on ordering AISC publications mentioned in this article can be obtained by calling AISC at 312/670-2400 ext. 433.

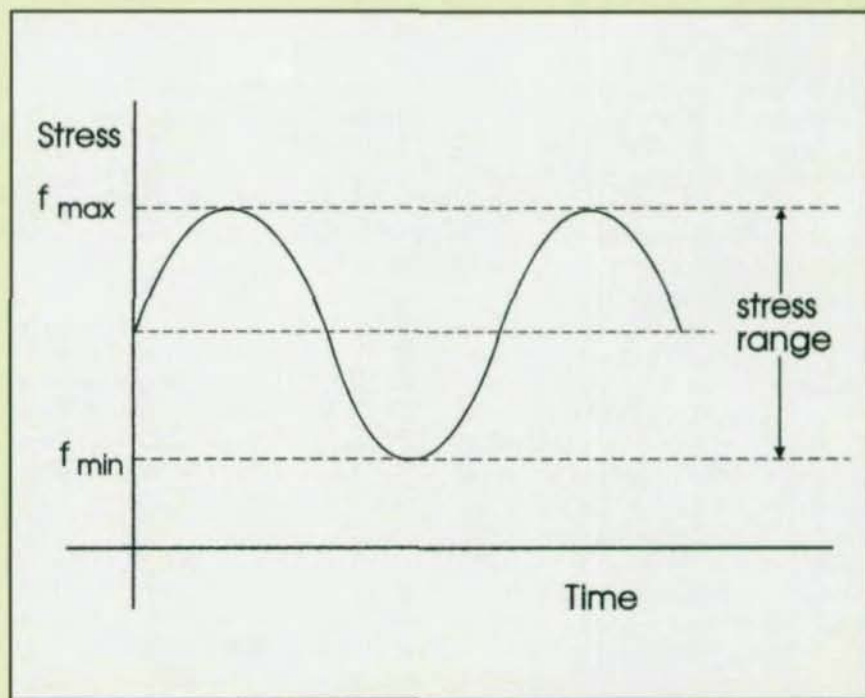
The following responses from previous Steel Interchange columns have been received:

**Is the section in the Specification concerning fatigue appropriate for variable amplitude fatigue loading?**

The allowable stress ranges used in the AISC Specifications Appendix A-K4.3 are for constant amplitude loading. For variable amplitude loading an effective stress range can be calculated using Miner's rule as used by Schilling, C. G. and K. H. Kleppstein, *New Method for Fatigue Design of Bridges*, *Journal of the Structural Division*, Vol. 104 No. ST3, ASCE, New York, March 1978.

**Due to a clearance requirement, a frame has the configuration shown. For out-of-plane buckling, what will be the unbraced lengths for members a, b, and c with the following conditions: (1) a and b are rigidly connected and (2) a and b are released at their ends.**

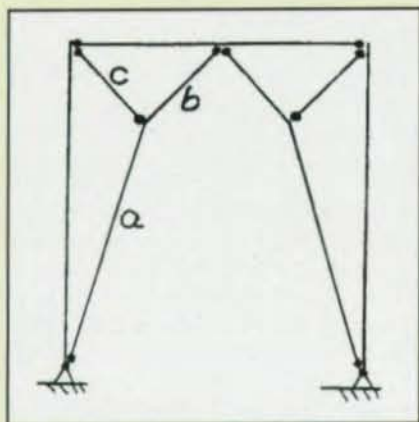
Strictly from an engineering standpoint, the best solution to the problem of the kinked frame is to provide out-of-plane bracing at the intersection of Members a, b, and c, in effect creating a 3-D truss. Members a, b, and c could then all be designed with K equal to 1.



If out-of-plane bracing is not possible, members a and b must be continuous at their intersection point, and must be restrained torsionally at their bottom and top ends, respectively. If a and b are pinned at their intersection, and free to twist at their end points, the frame is unstable for out-of-plane buckling; i.e., its theoretical buckling capacity is nil. No information is given on member sizes, loads, or connections. A heavy gusset plate connection might provide enough torsional restraint, depending on the loads and geometry; a lighter gusset plate might not.

Determining the exact effective length of kinked member ab is not a simple problem. Member ab must resist out-of-plane buckling under its own axial load, and must also provide out-of-plane bracing for pin connected Member c, which increases the stiffness requirement. A hand analysis model could be developed; however I would suggest using structural analysis software to estimate the buckling load. If software capable of performing a buckling analysis (eigenvalue analysis) is not available, software which can perform a P-Delta analysis could be used. The frame should be





modeled as a 3-D frame, with only the top three and bottom two joints supported out-of-plane. The actual frame loads should be applied, along with a slight out-of-plane load, at the intersection of members a, b, and c. The ratio of the P-Delta displacement to the first order displacement (out-of-plane) at this joint can be taken as a (slightly unconservative) estimate of the amplification factor  $1/(1-P/P_{cr})$ . From this,  $P_{cr}$  can be estimated.

In either an eigenvalue or P-Delta analysis, the inelastic behavior of the members must be taken into account. This can be done by using the analysis only to determine an effective length factor (setting estimated  $P_{cr} = \pi^2 EI / (KL)^2$ , and solving for  $K$ ). Then using the usual AISC column formulas to calculate the strength of the member. Alternatively, the stiffness reduction factors on Page 3-8 of the 9th Edition of the AISC Manual of Steel Construction (Allowable Stress Design) can be used to reduce the moduli of elasticity of the members used in the analysis.

*David O. Knuttunen, P.E.*  
LeMessurier Consultants  
Boston, MA

**If a pin hole in a lifting lug is flame-cut, should the net section be reduced to compute the capacity of the lug?**

I recommend throwing the lug away and making a new lug using a drilled hole with chamfered edges. My second

choice would be to require that all the hardened material at the flame cut hole be removed by grinding.

Flame cutting produces a locally hard brittle zone with microscopic cracks—ideal for points of crack initiation. Lugs are usually made from thick plate material of unknown Charpy impact (low temperature) properties and used outside in all ranges of temperatures — often on a repetitive basis with some impact loading and non-redundant lifting devices. The cost of a good hole is very small compared to the potential loss of life and damages due to brittle fracture at a lug hole.

*George D. Conlee, P.E.*  
St. Louis, MO

**Where is the best place to get information on foreign specifications and requirements?**

In 1991 the Structural Stability Research Council (SSRC) published *Stability of Metal Structures - A World View (The World View) 2nd Edition*. The World View is a 940 page comprehensive world-wide study of over 100 specifications and codes on stability design of metal structures. It is the only book in the world that evaluates specifications and codes, compares and contrasts them, and explores some of the major reasons for their differences. The geographical regions covered are: Australia, China, East Europe, Japan, North America, and West Europe. Divided into 14 topics, the World View condenses the specification provisions and then gives regional and international comparisons and comments. The topics are:

- Compression Members
- Built-Up Members
- Beams
- Plate and Box Girders
- Beam-Columns
- Frames
- Arches
- Triangulated Structures
- Tubular Structures
- Shells
- Cold-Formed Members
- Composite Members

Earthquakes  
General Provisions & Design  
Requirements

The World View cost is \$85 (\$68 for SSRC members). It can be obtained from: Structural Stability Research Council, Fritz Engineering Laboratory, Lehigh University, 13 E. Packer Avenue, Bethlehem, PA 18015-3191, Phone: (215) 758-3522, Fax: (215) 758-4522.

*Donald R. Sherman*  
University of Wisconsin-  
Milwaukee  
Milwaukee, WI

## New Questions

Listed below are questions that we would like the readers to answer or discuss.

If you have an answer or suggestion please send it to the Steel Interchange Editor, Modern Steel Construction, One East Wacker Dr., Suite 3100, Chicago, IL 60601-2001.

Questions and responses will be printed in future editions of Steel Interchange. Also, if you have a question or problem that readers might help solve, send these to the Steel Interchange Editor.

**When asked to design a temporary bracing system for steel beams and columns during the erection phase of construction, what loads are used and what factors of safety are employed for the bracing and its connections? California OSHA requires the bracing to be designed by an engineer but does not specify the loads.**

*Larry Borsclair*  
Pace Engineering  
Redding, CA

**When is it appropriate to use clips instead of hook bolts to secure rails for top running crane runways? What are the service verses cost considerations?**

*John P. Keating*  
Whirlwind Building Systems  
Houston, TX



# NATIONAL STEEL CONSTRUCTION CONFERENCE

THE ONLY "ALL-STEEL" CONFERENCE  
AND TRADE SHOW IN THE U.S.



MAY 18-20, 1994

DAVID L. LAWRENCE CONVENTION CENTER  
PITTSBURGH, PENNSYLVANIA

## THE 1994 "ALL-STEEL" CONFERENCE

show is coming to "Steel City". Pittsburgh is the NSCC site for the most comprehensive trade show on the design and construction of fabricated structural steel. The NSCC addresses all aspects of steel construction from concept to completion: computerized design; codes and specifications; research; shop and project management; inspection and safety; fabrication and erection procedures. This meeting delivers the best and latest information on the structural steel industry and will feature services and showcase products from over 100 exhibitors.

## SESSION TOPICS INCLUDE:

- World Trade Center Explosion
- Stadia Roofs
- Design for Wind
- Electronic Data Transfer
- Building Innovations
- Quality Certification
- 2nd Edition LRFD Manual
- Safety
- High-Strength Steel
- Building Retrofit
- Bridge Construction

**EDUCATION:** Technical seminars inform and educate. Continuing Education Credits are available for all attendees.

**NETWORKING:** The opportunity to

interact with ALL members of the steel construction team. Meet with your peers, exchange ideas and create new business ventures.

**STATE-OF-THE-ART:** New products and services available in the structural steel industry. **HOSPITALITY:** Designated the nation's most livable city, Pittsburgh offers many exciting options to explore. Visit the Carnegie Science Center, dubbed an "amusement park for the mind". Tour Clayton, a turn-of-the-century house museum opened to the public in 1990. **CULTURE:** Pittsburgh's Cultural District offers a variety of entertainment from the acclaimed Pittsburgh Symphony Orchestra, Broadway and Off-Broadway shows, dance and comedy performed in the revitalized historic Fulton Theater. Located in Point State Park, everyone will enjoy the

Fort Pitt Museum, which brings the city's history to life or have an encounter with wildlife at the Pittsburgh Zoo's Tropical Forest Complex, where visitors can experience a fog-shrouded forest.

## STEEL

## STANDS FOR THE FUTURE



SPONSORED BY  
American Institute  
of Steel Construction, Inc.

CO-SPONSORED BY  
American Institute for Hollow  
Structural Sections  
American Iron and Steel  
Institute  
American Welding Institute  
American Welding Society  
Canadian Institute of Steel  
Construction  
Mexican Institute of Steel  
Construction

National Erectors Association  
National Institute of Steel  
Detailing  
Steel Deck Institute  
Steel Joist Institute  
Steel Plate Fabricators  
Association  
Steel Service Center Institute  
Steel Structures Painting  
Council

For registration or exhibiting information,  
call AISC at 312/670-2400, or write:

American Institute  
of Steel Construction, Inc.  
One E. Wacker Dr., Suite 3100,  
Chicago, IL 60601-2001

FAX 312/670-5403



# Finding Low Cost Bay Designs

A new software package from AISC Marketing, Inc. condenses 2,400 composite beam and girder designs onto one IBM-compatible 3.5-in. diskette. The data allow design engineers to quickly analyze a wide range of bay alternatives to determine which will be the least expensive.

Designers can select different bay sizes, deck designs, model codes, AISC Specifications, live load reductions and live loads. After the design parameters are entered, the program provides 15 design alternatives, each listed in order of least cost.

"It's an invaluable tool for quickly estimating the cost of floor design and framing," according to Andy Johnson, vice

president of marketing with AISC Marketing, Inc.

Each of 48 data files contains design information for 25 bays ranging in size from 20-ft. x 20-ft. to 40-ft. x 40-ft. in 5-ft. increments for both the filler beams and girder spans.

Because of the flexibility of composite design with regard to full and partial composite action and the optional use of camber to compensate for dead load, the least weight alternative is not always the most economical. Instead, when listing relative cost the database considers such factors as the amount of steel and camber and shear stud cost. However, since the relative cost of erection, connections, fire protection and other items are

roughly the same for all alternatives, those items are not considered.

The design parameters considered in the bay studies include:

- Deck Slab—
  - 2-in. metal deck with 3-in. regular weight concrete;
  - 3-in. metal deck with 4.5-in. regular weight concrete;
  - 2-in. metal deck with 3.25-in. lightweight concrete;
  - 3-in. metal deck with 3.25-in. lightweight concrete;
- Specification—
  - LRFD-1986 or ASD-1989;
- Live Load Reduction—
  - BOCA; UBC; or SBC
- Live Load—
  - 50 psf or 80 psf

"The diskette contains an enormous amount of data. If you're talking to an architect or owner and want to establish the preliminary bay spacing, the disk will provide the least cost option," explained Abraham J. Rokach, director of building design with AISC Marketing, Inc.


The disk costs \$50 and is available from AISC Publications. For ordering information, call (312) 670-2400 ext. 433.

## When you're in a tight corner, only one Thickness Gauge measures up.

The new low cost Elcometer 345 is the most versatile of all thickness gauges.

Available in four models, the 345 measures any non-magnetic coating on steel or all non-conductive coatings on non-ferrous substrates with its integral or separate probe.

Simple to use and shirt-pocket size, wherever you use a thickness gauge, you can be sure the new Elcometer 345 fits your needs. Perfectly.

 elcometer®

For detailed catalog please contact:  
ELCOMETER INC.,  
1893 Rochester Industrial Drive,  
Rochester Hills, Michigan 48309.  
Tel: (313) 650 0500 Toll Free within USA:  
800 521 0635 Fax: (313) 650 0501



# 345

DIGITAL  
COATING  
THICKNESS  
GAUGE

## New Publications from SSRC

A new 305-page book from the Structural Stability Research Council presents the latest information on plastic-hinge based methods of analysis.

Research has demonstrated the potential of these techniques for advanced analysis/design application. The term "advanced analysis" indicates a method of analysis that sufficiently captures the limit states behavior encompassed by specification



equations and for member proportioning such that separate member capacity checks are not required. When properly formulated and executed, this type of analysis holds the promise for rigorous assessment of the performance and maximum strength of framing systems and their components.

The book is divided into three major topic areas: Specifications & Analysis; Practical Implementation & Use; and Verification & Benchmarking Problems. Each topic area contains several contributed papers, followed by workgroup summary reports from the 1992 Task Group 29 workshop.

"Plastic Hinge Based Methods for Advanced Analysis and Design of Steel Frames" is available for \$40 (\$30 for SSRC members) from: SSRC Headquarters, Fritz Engineering Laboratory, 13 E. Packer Ave., Lehigh University, Bethlehem, PA 18015 (phone: 215-758-3522; fax: 215-758-4522).

Also available from SSRC is the Proceedings from a conference on "Is Your Structure Suitably Braced?" held last April and sponsored by SSRC, AISC, AISI and MBMA.

The book contains 21 papers plus panel discussion questions and answers. Topics deal with the design and evaluation of bracing systems for beams, columns and frames, and bracing strength and stiffness in various metal structures. Keynote sessions presented overviews of bracing requirements for beams, compression members, frames and building systems, all of which is covered in the book.

The book is available for \$50 (\$40 for SSRC members) from: SSRC Headquarters, Fritz Engineering Laboratory, 13 E. Packer Ave., Lehigh University, Bethlehem, PA 18015 (phone: 215-758-3522; fax: 215-758-4522). A 10% discount is given for orders of 10 or more copies.

## Curved and Straight Steel Bridge Girder design & analysis on your PC

### Integrated Grid Analysis & Girder Design

- Generates and loads influence surfaces, generates grid geometry
- Plate and box girders incl. web haunches, rolled shapes incl. cover plates
- 12 continuous spans, variable horizontal curvature, skewed supports
- Powerful nonprismatic girder optimization processor satisfies user and code
- 1992 AASHTO Spec. w/ 1993 interims, latest Curved Girder Guide Spec.
- Full control of composite action, slab pour sequencing analysis
- Excellent for analyzing existing girders for specification compliance
- Comprehensive tabular output, graphical output of stresses and deflections

Available by lease or license

For more information, or to request a free trial, contact:

# MDX software

Phone (314) 446-3221

Fax (314) 446-3278

# ROBOT V6

## GRAPHICAL FULLY INTEGRATED STRUCTURAL ANALYSIS AND DESIGN SOFTWARE

### NEW INCREMENTAL PRICING STRUCTURE. FROM \$495.

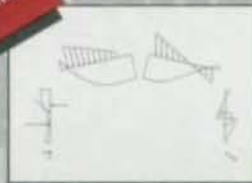
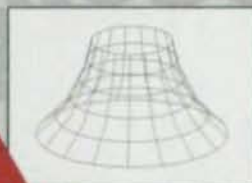
Now you no longer have to switch to different programs when your problem gets larger, or you want to run special analysis. Starting with the identical program base, our \$495 version, full featured version, and all those in between utilize the same easy to use yet sophisticated user interface as our full featured program. So you can buy the power you need now, and upgrade as your needs grow in the future. You won't have to learn another package. Large design firms can benefit by using ROBOT V6 packages with various capacities throughout the firm, each providing engineers with the same user interface and standardized printed output.

### THE BEST TOOLS FOR STRUCTURAL ANALYSIS AND DESIGN

As a new generation software, ROBOT V6 is emerging as a new standard of excellence in structural analysis. Only ROBOT V6 provides you with unparalleled quality, reliability, calculating power, and ease of use. An investment of over 50 man-years of development effort has resulted in more than 400,000 lines of object oriented C and C++ code. Thanks to state-of-the-art programming techniques, ROBOT V6 is extremely fast and the most powerful structural analysis program running on the PC platform.

### THE MOST EFFICIENT AND INNOVATIVE PROGRAM TODAY

ROBOT V6 will let you increase productivity of your design team, even if you use other programs now. ROBOT V6 capabilities leave the competition far behind. ROBOT V6 is especially geared for structural engineers, and supports various national codes for steel and concrete design, using point-and-click, interactive design procedure.



NEW.  
SAPS VERSION  
OF OUR FULL  
FEATURED  
PROGRAM.

NEW.  
30 DAY  
MONEY BACK  
GUARANTEE.

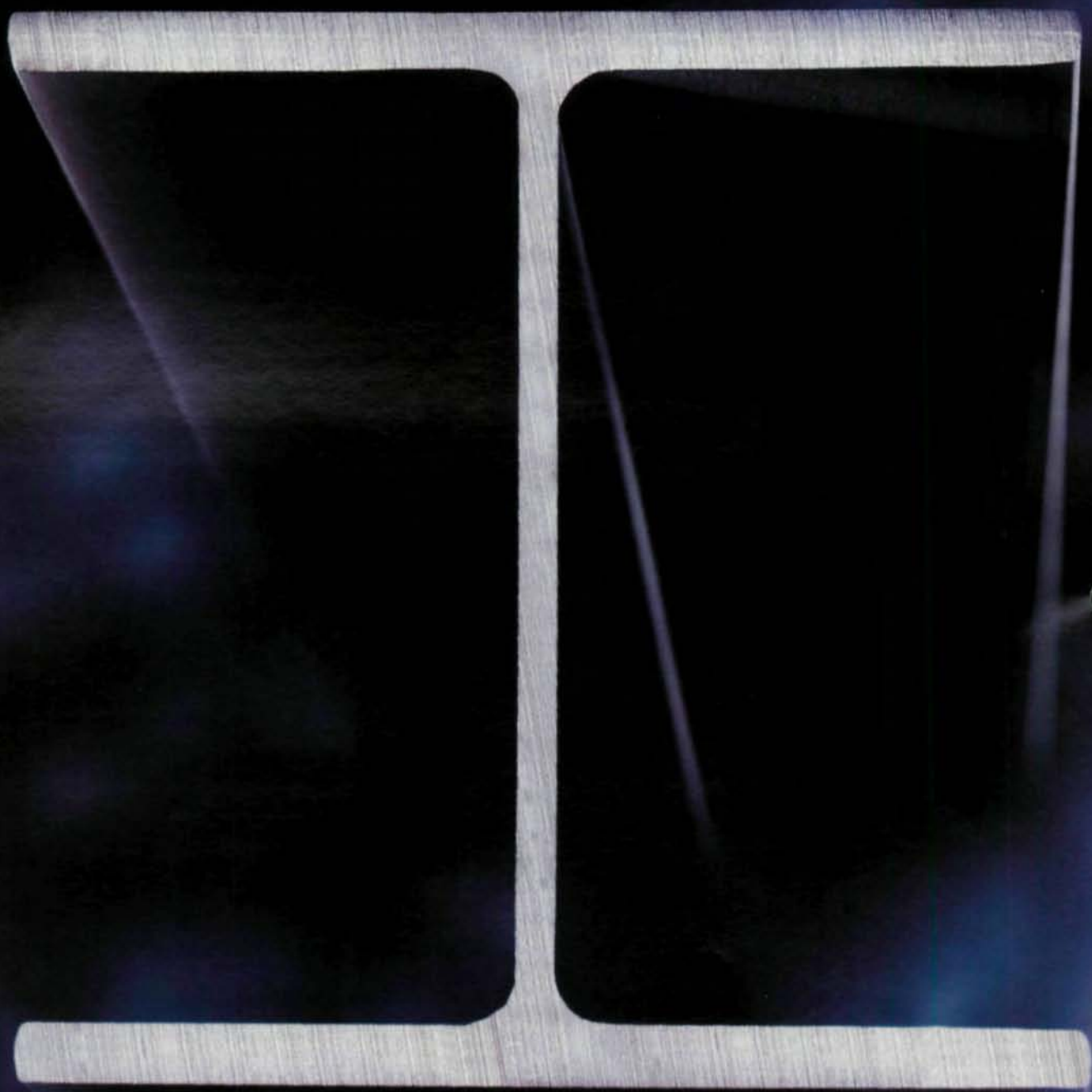
metrosft

332 Paterson Ave  
E. Rutherford, NJ 07073

DEMO AVAILABLE (LIMITED VERSION OF PROGRAM AND SELF-RUNNING EXAMPLES)  
OVER 1200 USERS WORLDWIDE. FOR MORE INFORMATION CALL 201-438-4915 OR FAX TO 201-438-7058

UK	Germany	Italy	Belgium	Spain/Portugal	France	Luxembourg	Poland	Jordan	Morocco
tel: 081 742 7224	(08557)410	011/6699345	(086)34 49 70	(33)61 27 00 68	76 41 80 82	25 03 60	(0 12)33 13 72	682483	76 89 43
fax: 081 747 4663	(08557)550	011/6699375	(086)34 47 95	(33)61 27 10 90	76 41 97 03	25 03 63	(0 12)33 88 64	681600	26 09 99







00642

**THIS IS GOING TO BE**  
**THE MOST POPULAR**  
**CONSTRUCTION**  
**SIGHT IN AMERICA.**

Nucor-Yamato Steel is reshaping the way America sees construction. With an expanded mill that can supply

more structural steel than any mill in the Western Hemisphere.

**THE BIGGEST MILL** And not only more steel, but a broader product line with beams up to 40 inches deep. Perhaps best of all, we are a low cost producer. It all adds up to just one thing: talk to Nucor-Yamato before you decide to build your next project.

**AVAILABILITY** With 1.6 million tons behind us, nothing can stop our availability and on-time delivery by rail or truck or barge on a wide range of products. In fact, we can offer high strength steel at little or no more cost than standard ASTM A36 beams.

**QUALITY** Nucor-Yamato is a state-

of-the-art mill, including electric arc and ladle metallurgy furnaces, continuous beam blank casting and high performance

rolling mills designed to produce stock and other lengths for all our customers. All our steel is low carbon and fine grain with superior toughness and surface quality that offers both weldability and improved corrosion resistance.

**LOW COST PRODUCER** Perhaps best of all, it's produced cost effectively for some of the most competitive prices you'll ever see. And if you're in the construction business these days, that's a sight for sore eyes.

Contact Nucor-Yamato Steel early in your next project at 800/289-6977, FAX 501/763-9107; or write to us at PO Box 1228, Blytheville, Arkansas, 72316.

**Structural shapes** from W6 X 15 to W40 X 297  
**Standard sections** including C15 X 33.9-50, MC 12 X 31-50, MC 13 X 31.8-50 and MC 18 X 42.7-58  
**H-Piling** ranging from HP 8 X 36 to HP 14 X 117  
**Grades** include ABS Grades A, B, AH32, AH36; ASTM A36; ASTM A572 Grade 50; ASTM A588 ("weathering steel"); ASTM A709 (AASHTO M270 equivalents); as well as CSA 40.21 Grade 44W



# Advanced Connections Reduce Costs

A series of new connections under development at the ATLSS Center have the potential to substantially reduce erection time

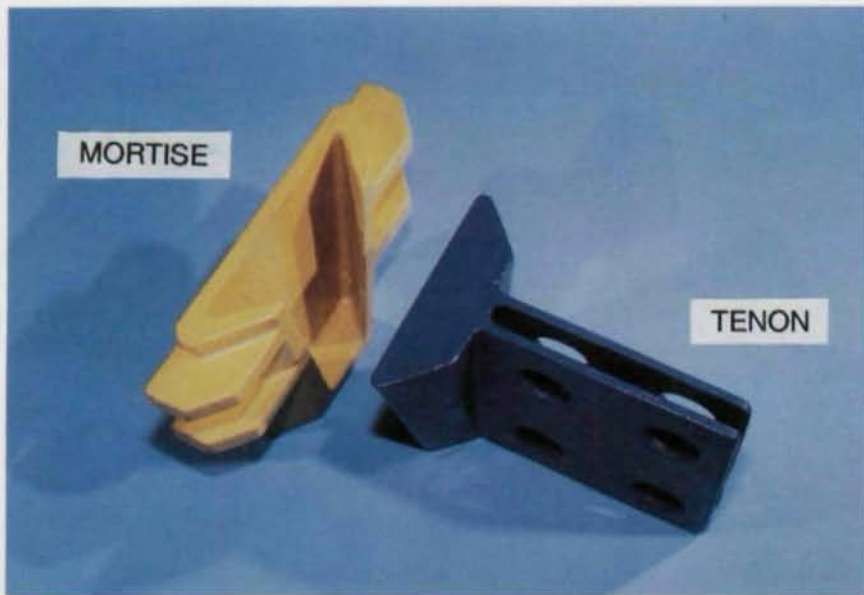
By Wayne S. Lawrence,  
Le-We Lu, and  
B. Vincent Viscomi

With labor costs continuing to increase as a percent of the total cost of construction, the steel industry is searching for ways to reduce the time it takes to erect a structure. One part of this time savings may come from an innovative connector developed by the Center for Advanced Technology for Large Structural Systems (ATLSS) at Lehigh University.

The ATLSS Connector is a self-guiding, self-aligning shear connection designed to give steel erectors a means to assemble framing modules by both automated and semi-automated construction methods. It utilizes two interlocking components. The first, called a "tenon," is field bolted to a beam and has tapered slopes that match the slopes of the second member, which is called a "mortise" and is shop welded to the column.

The sloped walls are critical to avoid misalignment during construction since they guide the tenon to proper seating in the mortise. This erection concept, called "keystone coupling," also provides a beneficial wedging action so that pullout during erection is minimized. A seating bolt is included at the bottom of the connector to assure positive restraint against disengagement during and after construction. And finally, slotted bolt holes in the tenon allow for final adjustments.

The ATLSS Connector was recently tested during the construction of a low-elevation roof bay of an industrial plant. The bay dimensions were 20-ft.-by-30-ft. and the bay was designed to carry gravity load only. Since there were a large





number of individual members in each bay, it was decided that the bay would be preassembled on the ground using traditional connections, and erected using an ATLSS Connection at each corner.

The entire bay was hoisted and installed with a conventional boom crane, two iron workers with guy wires, and a foreman. The assembly on the ground took 20 minutes, the attachment of the tenons to the corners of the bay took five minutes, and the lift took less than four minutes. After the large piece was placed, a three-point end piece was installed. This took approximately one minute to erect. Following successful erection, it took the iron workers seven minutes to install the securing bolts.

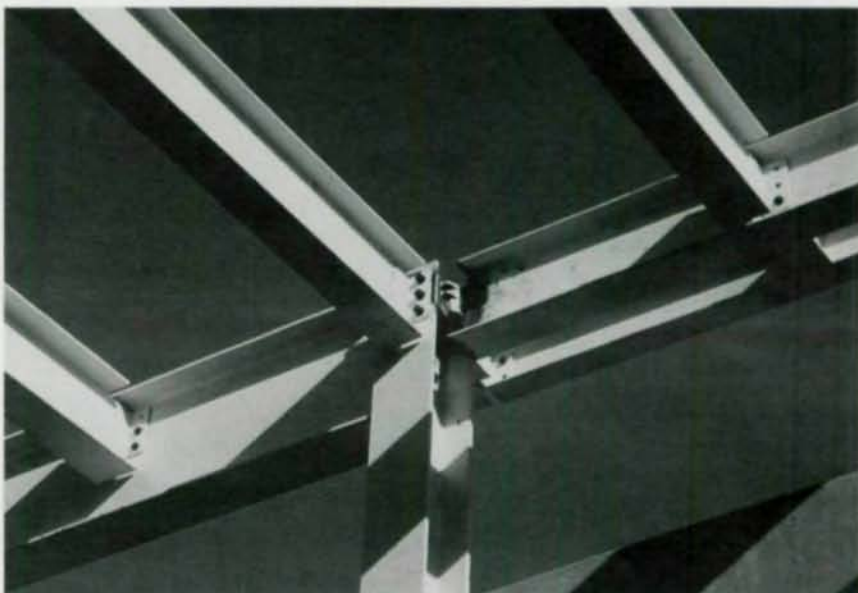
Total time of erection for the bay was 37 minutes, a substantial improvement when compared with the one hour it took to erect a similar bay in the adjacent span using conventional connections.

In addition, the ATLSS Connector provided other benefits. Because there were plans for a future vertical addition, a removable connection proved advantageous. Also, had the contractor so desired, the modular bay could have been outfitted with mechanical and electrical systems on the ground prior to erection or even off-site.

### Further Developments

While the ATLSS Connector was initially conceived and designed as a shear connector, in the future there are plans to develop a moment connection incorporating the ATLSS Connector. Three different connection configurations with varying degrees of restraint were studied both experimentally and analytically. Five tests were conducted on exterior connections, scaled from a prototype frame that had been designed based on current practice.

The test program consisted of applying a monotonic and a cyclic loading, thus allowing for



*The ATLSS Connection was successfully proven in the field demonstration shown above. Conventional boom cranes were utilized with the aid of guide lines and the installation reduced construction time by more than half compared with conventional connections.*

the assessment of static strength and stiffness as well as energy dissipation of the connections. The fully restrained connection was capable of resisting a bending moment and exceeding the plastic moment of the adjoining beam. The partially restrained connection achieved 97% of the beam's plastic moment in negative bending and 59% in positive bending. While acting as a



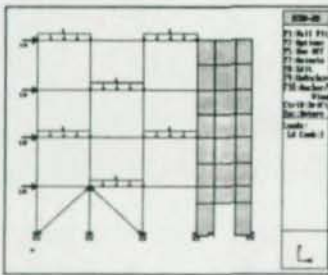
# A Quick Quiz For Structural Engineers

The more a computer program costs, the better it is. TRUE FALSE

A program that solves complex, difficult problems must be complex and difficult to use. TRUE FALSE

Structural engineering software can never be fun to use. TRUE FALSE

If you answered *TRUE* to any of the above, or you would like to know more about a truly innovative software program, call us!



## RISA-2D

Your complete solution for  
frames, trusses, beams,  
shear walls and much more!

**RISA**  
TECHNOLOGIES

26212 Dimension Drive, Suite 200  
Lake Forest, CA 92630  
1-800-332-7472

IN ADDITION TO ANGLE, RAIL, PIPE, CHANNEL,  
AND BEAM ROLLING CAPABILITIES, WE  
ROLL TUBES, CHANNELS, AND  
BEAMS THE HARD WAY.  
IF WE CAN BE OF SERVICE  
PLEASE CALL OR FAX.

# WHITEFAB INC.

Birmingham, AL

Phone (205) 791-2011 FAX (205) 791-0500

mid-web shear attachment, the ATLSS Connector contributed up to 16% of the moment capacity.

These experiments show that an all steel connection can incorporate a connector into its connection scheme and can achieve the full moment capacity of the beam with good ductility.

### Semi-Rigid Composite Connection

Both the LRFD and the ASD Specification permit the use of Partially Restrained Connections, but it must show evidence of a predictable proportion of full end restraint and meet the following criteria:

1. The connections and connected members must be adequate to carry the factored gravity loads as "simple beams."

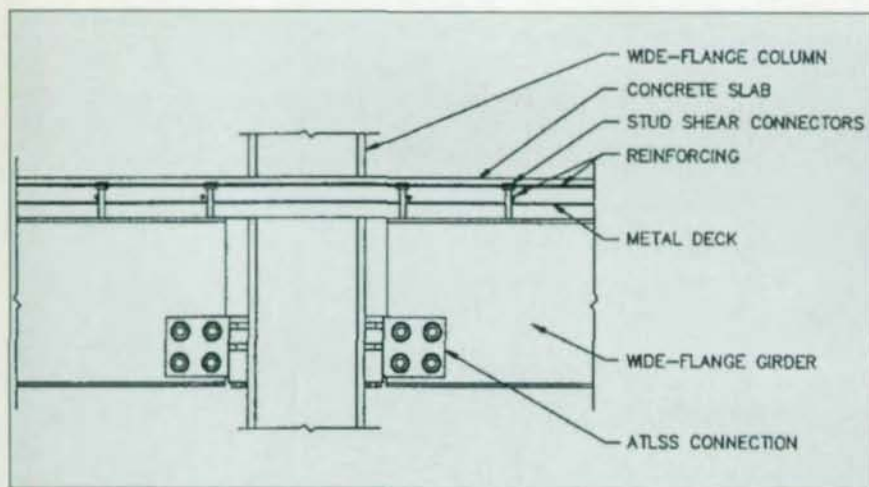
2. The connections and connected members must be adequate to resist the factored lateral loads.

3. The connections must have sufficient inelastic rotation capacity to avoid overload of fasteners or welds under combined factored gravity and lateral loading.

Semi-rigid connections have proven to be cost effective, and tests show that the ATLSS Connector can be used in a composite design. In one successful test the ATLSS Connector was placed at the bottom of the beam while the reinforced concrete deck is at top. These two structural components act together in order to develop the necessary stiffness and strength.

Usually, the ATLSS Connector acts as both a shear connection and an erection aid. But by placing it at either the top or the bottom of the beam, it is possible to develop the necessary tensile or compressive forces required to resist the coupled forces that produce a moment. The placement of reinforcement bars in the concrete slab and around the periphery of the column will develop the tensile force needed to resist the negative moment. The stiffness, strength and seismic perfor-





*Semi-rigid connections offer a promising economical design potential, and the ATLSS Connector makes the erection of such a framing system relatively easy. Shown above is an ATLSS Connection and a typical semi-rigid composite joint detail.*

mance of the connection is being carefully evaluated at this time. However, it is believed that the use of this type of connection can result in substantial savings.

#### Tubular Columns

Hollow structural sections are an increasingly popular option for several reasons. They are available in high tensile strength grades, offer large radii of gyrations and better torsional properties than comparable open sections. In addition, where further strengthening or stiffness is required, the inside of the tube can easily be filled with concrete.

The ATLSS Connector may prove ideal for HSS since, by fitting flush to all sides of a tube, they can reduce the cumbersome detailing required with conventional connections.

Research is currently underway to assess the behavioral characteristics of the ATLSS Connector when it is welded to tubes of varying wall thicknesses. The study includes cases in which the Connector transmits tension, compression, shear and bending. In addition to the local effect study, a semi-rigid composite connection will be designed and tested to determine its moment rotation characteristics under static and cyclic load-

ing.

#### Construction Automation

ATLSS is engaged in a collaborative research effort with the National Institute of Standards and Technology (NIST) to combine the ATLSS Connector with the Stewart Platform, which could further automate construction and reduce labor costs.

The Stewart Platform consists of two platforms connected by six individually controlled linkages. Each platform has the six linkages connected to it at a total of three connection points—two linkages at each connection point. The connection points are non-colinear and are almost exclusively arranged to form an equilateral triangle and the linkages are connected to the platforms in a kind of "daisy chain" format.

The Stewart Platform is completely independent of any crane/track system and can be attached to almost any type of crane, including tower, boom and gantry bridge cranes. The orientation of the cables is such that the system has properties of a space frame and this configuration provides excellent translational and rotational stiffness when compared with a conventional boom crane. The Stewart

## ARKANSAS

SAVES YOU

- TIME
- LABOR
- MONEY

WITH WF BEAM  
CUSTOM SERVICES:



CAMBERING



TEE-SPLITTING



DRILL & COPE



END MILLING



CUT-TO-LENGTH



STORAGE, TRANS-SHIP

FREE

LATEST DETAILED  
INFORMATION:  
PRICE,  
SPECIFICATIONS,  
CAPABILITIES,  
SERVICES,  
AND MORE...  
WRITE OR CALL:  
ARKANSAS STEEL  
PROCESSING, INC.  
17W697 BUTTERFIELD RD.  
OAKBROOK TERRACE, IL 60181  
(708) 495-8600 Toll-Free 1-800 255-8601  
Fax (708) 620-6394



ARKANSAS STEEL PROCESSING, INC.  
ARMOREL, AR 72310

A FULL-SERVICE STRUCTURAL  
STEEL PROCESSING CENTER



Here's some food for thought: **CadVantage** Structural (CVS) allows steel detailers to immediately produce 75% more output per day! CVS serves up the most flexible and simple format in the industry, while offering the fastest, most accurate and affordable detailing system on the market.

**CadVantage** - it's great food for any system.

# CadVantage

# CAD FOOD

For a **FREE** demo disk and more information, call **704-344-9644**.  
**CadVantage**: 619 South Cedar Street / Studio A / Charlotte, North Carolina 28202



*The Stewart Platform is a multi-degree of freedom crane that can be used in automatic and semi-automatic schemes.*

Platform can adjust the position and orientation of the lower platform with a high degree of precision in all six degrees of motion. This feature makes the platform an excellent choice for use with the ATLSS Connectors.

#### Future Plans

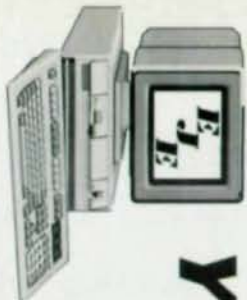
The ATLSS Center was established by the National Science Foundation in 1986 to improve the U.S. construction industry's competitiveness in the interna-

tional market by reducing the overall cost of construction.

The ATLSS Connector was developed with the assistance of ATLSS industry partners, including Bechtel Corporation, Bethlehem Steel Corporation, DuPont Corporation and AISC.

Experimental castings of the ATLSS Connectors have been made using high strength low alloy steel with an 80 ksi yield (HSLA-80). This material is a good candidate for the Connector

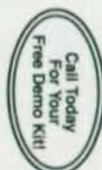




# YOUR COMPETITION ALREADY KNOWS

Phone (800) 321-3955  
or (412) 228-8841  
Fax (412) 228-7668

**E.J.E. INDUSTRIES, INC.**  
Computer Software for Steel Professionals  
287 Dewey Avenue, Washington, PA 15301



Your competition knows that using the **Structural Material Manager** is simply smarter than processing steel lists by hand.

Consider this: Hundreds of steel fabricators, suppliers and detailers have abandoned old-fashioned manual material list calculations and now use their IBM PC-compatibles with **SMM** to do the job more quickly and accurately.

**IF YOUR COMPETITION ALREADY KNOWS, CAN YOU AFFORD NOT TO? Call for a FREE, no-obligation demo disk with all modules and the full system's operator's manual.**

- Main Module computes weights, surface areas, bolt counts and lineal totals. It also sorts lists into proper order by section size, length, grade, etc.
- Length-Nesting Module produces optimum cut-lists from in-house stock, vendor stock or the best combination of both.
- Estimating Module tallies material costs, shop hours and field hours.
- Production-Control Module prints shipping lists, loading tickets and job status reports.
- Can import lists directly from *CadAantage* or your own ASCII text files.
- In daily use by hundreds of steel fabricators, suppliers and detailers.



*ATLSS Center's multi-directional testing facility is capable of testing full-scaled structural specimens in any direction or directions.*

because of its high strength, excellent ductility and a good fracture toughness. Also, HSLA-80 is very weldable and, under normal circumstances, does not require any preheating when welded to other compatible steels, such as A36 and A572.

Eventually, a family of ATLSS Connectors will be available that will give the designer a range of sizes and properties from which to select a Connector to meet individual design requirements.

A patent has been granted for the ATLSS Connector and a commercialization strategy has been developed.

*Wayne S. Lawrence is a research scholar and Le-Wu Lu is a professor of civil engineering at the ATLSS Center at Lehigh University. B. Vincent Viscomi is a research professor at the ATLSS Center and a professor of civil engineering at Lafayette College.*



# EVERYTHING YOU NEED TO ABOUT SLOPED SEAT JOISTS CAN AT BRANSFORD ELEMENTARY



*Bransford Elementary School in Grapevine, Texas was built with Vulcraft sloped seat joists.*



# KNOW BE LEARNED SCHOOL.



Take a lesson from the Bransford Elementary School in Grapevine, Texas. Where the structural engineer saved money using Vulcraft sloped seat steel joists instead of wood construction for the pitched roof design.

Vulcraft sloped seat joists work in even the most complex customized framing jobs where wood construction has often been preferred in the past. But now things are changing. The rising cost of wood construction makes steel joists more competitive than ever. And aesthetic considerations are making pitched roof designs more popular. All across the country, contractors, engineers, and architects are turning to America's largest producer of steel joists for engineering experience, economical pricing, and unique design alternatives.

Vulcraft's sloped seat joists can be designed to fit almost any degree of pitch you could want, offer superior strength, and are easy to erect in any kind of weather. And, as we did for Bransford Elementary, we can coordinate the design and delivery of our high quality steel deck to go with our joists, allowing construction schedules to be met and costly delays avoided.

To take full advantage of Vulcraft's engineering expertise with sloped seat joists, contact us early in your design phase. We'll be happy to assist you in finding the most efficient and economical solution for your project.

Maybe it's time you went to the head of the class with Vulcraft. Give us a call or consult Sweet's 05100/VUL and 05300/VUL.



*Sloped seat joists can be designed to fit almost any degree of pitch.*



*Sloped seat joists work in even the most complex customized framing jobs.*

**VULCRAFT**  
A Division of Nucor Corporation

PO Box 637, Brigham City, UT 84302, 801/734-9433; PO Box 100520, Florence SC 29501, 803/662-0381; PO Box 169, Fort Payne, AL 35967, 205/845-2460; PO Box 186, Grapeland, TX 75884, 409/687-4665; PO Box 59, Norfolk NE 68702, 402/644-8500; PO Box 1000, St. Joe, IN 46785, 219/337-5411.

Architect: WRA Architects Inc., General Contractor: Steele-Freeman Inc., Structural Engineer: Randy Cooper, Steel Fabricator: Hutcheson Steel Inc., Steel Erector: Blakeman Steel. Photographs in this advertisement may not reflect complete or final installation. Consult Steel Joist Institute Technical Digest No. 9 for information concerning safe handling and erection of steel joists and joist girders.



# Eliminating Overspecified Simple Connections

Showing actual reactions on drawings can substantially reduce connection costs

By Charles J. Carter and Louis F. Geschwindner

While the engineer of record will often request a fabricator to develop the detailed configuration of connections, all too often the EOR fails to provide all of the information needed to do so. Specifically, actual reactions are seldom shown on the contract drawings from which the connections must be designed.

Both the ASD 9th Edition and LRFD 1st Edition of the *Manual of Steel Construction* state: "For economical connections, beam reactions should be shown on the contract drawings. If these reactions are not shown, connections must be selected to support one-half the total uniform load capacity...for the given beam, span and grade of steel specified."

However, neither Manual quantifies the substantial economic benefit of showing beam reactions on the contract drawings. For simplicity, a standard configuration of the double angle

connection will be considered in which only  $n$ , the number of bolt rows (and consequently, the length of the angles), varies. Based on values of  $n$  from two to 10, the cost of these standard connections will be estimated. Ranges of  $n$  compatible with each beam-size group will be identified and the percent increase in cost that results will then be determined over these ranges.

## The Standard Configuration

The standard parameters of the double angle connection to be considered are as follows:

- The shop and field bolts will be  $\frac{3}{4}$ -in.-diameter A325-N at 3-in. spacing with  $1\frac{1}{4}$ -in. edge distance.

- The holes will be short-slotted in the outstanding angle legs (those connected to the supporting member) and standard otherwise.

- The angles will be  $2L43\frac{1}{2} \times 5\frac{5}{16}$  (SLBB).

This standard configuration produces nine connections with

the number of bolt rows ( $n$ ) ranging from two to 10. While these connections will not satisfy every case, they will be adequate for the typical case and, therefore, will be used in this cost comparison.

## Connection Costs

The costs considered in this article can be divided into three categories: material, shop labor, and field labor.

The material costs include the cost of bolts, washers, and nuts and the framing angles. The shop labor cost includes shearing and punching the angles, punching the supported and supporting members, and installing the shop bolts. The field labor cost is comprised of installing the field bolts. While material costs are readily available, labor costs are seldom a matter of public knowledge. Furthermore, labor costs will vary from fabricator to fabricator and from region to region. Consequently, the costs used in this article should be regarded as an average estimate and

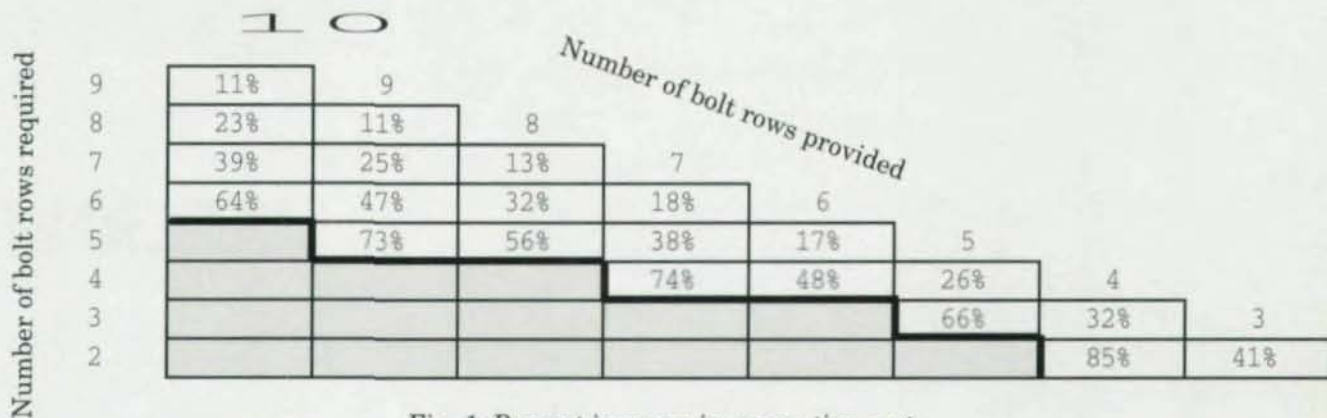


Fig. 1: Percent increase in connection cost



00647

**Table 1.**  
Material, Shop Labor, Field Labor, and Total Cost Estimates  
of Double Angle Connections in Standard Configuration

n	L	Material Cost		Shop Labor		Field Labor		Rounded Total Cost
		Bolt	Angle	Time	Cost	Time	Cost	
10	29 1/2-in.	\$22.50	\$5.61	0.65	\$13.00	2.65	\$79.50	\$121
9	26 1/2-in.	\$20.25	\$5.04	0.60	\$12.00	2.40	\$72.00	\$109
8	23 1/2-in.	\$18.00	\$4.47	0.55	\$11.00	2.15	\$64.50	\$98
7	20 1/2-in.	\$15.75	\$3.90	0.50	\$10.00	1.90	\$57.00	\$87
6	17 1/2-in.	\$13.50	\$3.33	0.45	\$9.00	1.60	\$48.00	\$74
5	14 1/2-in.	\$11.25	\$2.76	0.40	\$8.00	1.35	\$40.50	\$63
4	11 1/2-in.	\$9.00	\$2.19	0.35	\$7.00	1.05	\$31.50	\$50
3	8 1/2-in.	\$6.75	\$1.62	0.30	\$6.00	0.80	\$24.00	\$38
2	5 1/2-in.	\$4.50	\$1.05	0.25	\$5.00	0.55	\$16.50	\$27

should by no means be considered as universal.

The fabricators' costs assumed for this comparison are:

- A325 tension control (TC) bolts...\$90.00/100 lbs.
- L4x3 1/2 x 5/16.....\$14.75/100 lbs
- Shop Labor.....\$20.00/hour
- Field Labor.....\$30.00/hour

These are base costs; selling costs, which would include overhead and profit, would be higher.

The material in the standard configuration are summarized in Table 1. The bolt material cost is based on a bolt length of 3-in. with one washer and nut each; about 83 lbs. per 100 count. The angle material cost is based on an angle size of 4x3 1/2 x 5/16, which weighs 7.7 lbs. per ft. The labor costs are based on the labor time estimates summarized in the same table. Note that, in each row of bolts, there are three bolts: one shop bolt and two field bolts. Total costs have been rounded to the nearest whole dollar.

**Compatibility With Beam Shapes**

The deepest compatible standard connection must fit within the T-dimension of the beam list in Part 1 of the ASD and LRFD Manuals. As recommended in Part 4 of the ASD and Part 5 of the LRFD Manual, the depth of the minimum standard connection should be greater than T/2.

Given these limits, the compatibility of the nine standard connections with W-shapes is summarized in Table 2. Note that limitations such as coping, which may further restrict the maximum value of n are not considered.

**Percent Increase In Connection Cost**

Given the allowable variations in N in Table 2, percent increases in connection cost per unnecessary row of bolts provided are listed in Figure 1. Cells below the heavy line fall outside the spacially permissible variations in n given in Table 2. As an example of the use of Figure 1, consider a W18x50 and assume an end reaction that would require four rows of bolts. Using five rows of bolts instead, the largest n possible given the T-dimension of a W18, would increase the connection cost by 26%. When all beams and the full range of n are considered, the connection cost would increase from 11% to 85%. As the size of the beam being connected decreases, the percent change in cost increases and, as the number of unnecessary bolt rows increases, so does the percent change in cost increase.

However, if only the typical simple beam sizes (those no larger than W24) are considered, the

**Table 2.**  
Compatibility of W-Shape Beams and Standard Connection Depths

Shape	Weight	Number of Bolt Rows	
		Minimum	Maximum
W 36	359-230	6	10
	256-135	6	10
W 33	354-118	6	10
W 30	235-99	5	9
W 27	217-84	5	8
W 24	176-55	4	7
W 21	166-44	4	6
W 18	143-35	3	5
W 16	100-26	3	4
W 14	132-90	3	3
	82-43	2	3
	38-22	2	4
W 12	87-40	2	3
	35-14	2	3
W 10	112-33	2	2
	30-12	2	3
W 8	67-24	2	2
	21-10	2	2

variation is narrowed somewhat. In most cases, the number of unnecessary rows of bolts will not exceed one. Accordingly, the cost increase will be between 13% and 41%.

*Charles J. Carter is a staff engineer with AISC and Louis F. Geschwindner is a professor of architectural engineering at The Pennsylvania State University, University Park, PA. This article was adapted from a paper first published in the 1st Quarter 1993 issue of Engineering Journal.*



# Marketing Better Design



A small California structural engineering firm uses its computer expertise to attract new business

By Mick Wilson, S.E., and Rory Rottschalk, S.E.

In addition to dealing with seismic loads on very soft soils, the design of the new western regional headquarters for a major manufacturer of audio/video equipment was complicated by the marriage into a single structure of a four-story office and an enclosed "high stack" warehouse. The gravity analysis for this San Francisco Bay-area building was further complicated by an architectural design that called for a different configuration on each office level and the location of several clear-story atriums.

Structural steel was the obvious choice for the structural framing system due to its ability to provide an economical structural system despite the non-repetitive framing patterns, high floor-to-floor heights, and relatively large bay sizes. The typical bay is 40-ft. x 40-ft. in the office space and 40-ft. x 45-ft. in the warehouse. The second floor height is 21 ft., while the floor

heights above are 15 ft. The warehouse roof height was 51-ft. to allow for tall storage racks.

Total office floor area is 413,000 sq. ft. and the warehouse area is 76,000 sq. ft. Also, some of the office space is provided in a two-story portion of

The owner considered structural engineering to be something more than just a commodity

the building that is immediately adjacent to, but seismically separate from, the four-story structure.

## Marketing Design Capability

Surprisingly, this project did not involve the usual procedure of comparing design proposals from prospective "pre-qualified" structural engineers and choosing the engineer with the lowest fee. Rather, Culp & Tanner was hired for this project due to the company's ability to present our steel design capabilities as a measurable benefit to the client.

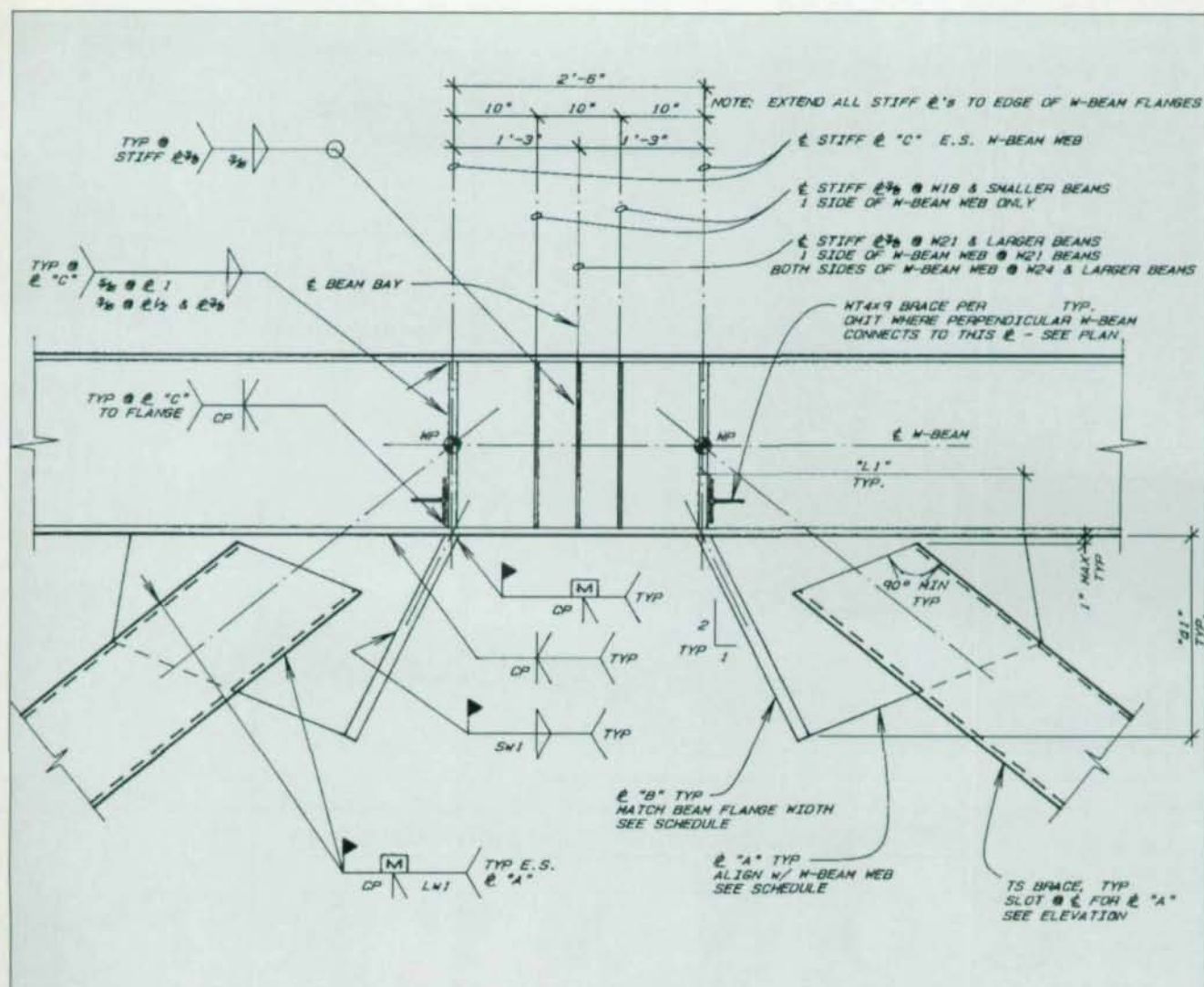
On this project, unlike many others, the owner considered structural engineering to be something more than just a commodity to be purchased—like doorknobs.

Our marketing approach is to show clients how we can benefit their project. To do this, we use Ramsteel, a graphic software package for steel frame design. During a one-hour visit with a client, we graphically develop, design and discuss

a building model. When presenting our capabilities to contractors, we develop a generic building model during the visit and then focus our presentation on the program's optimization potential, the complete material take-off produced, and the ability to generate very early, very accurate information. In the case of this project, we received a call from the contractor one day after our presentation—obviously our message was successfully communicated.

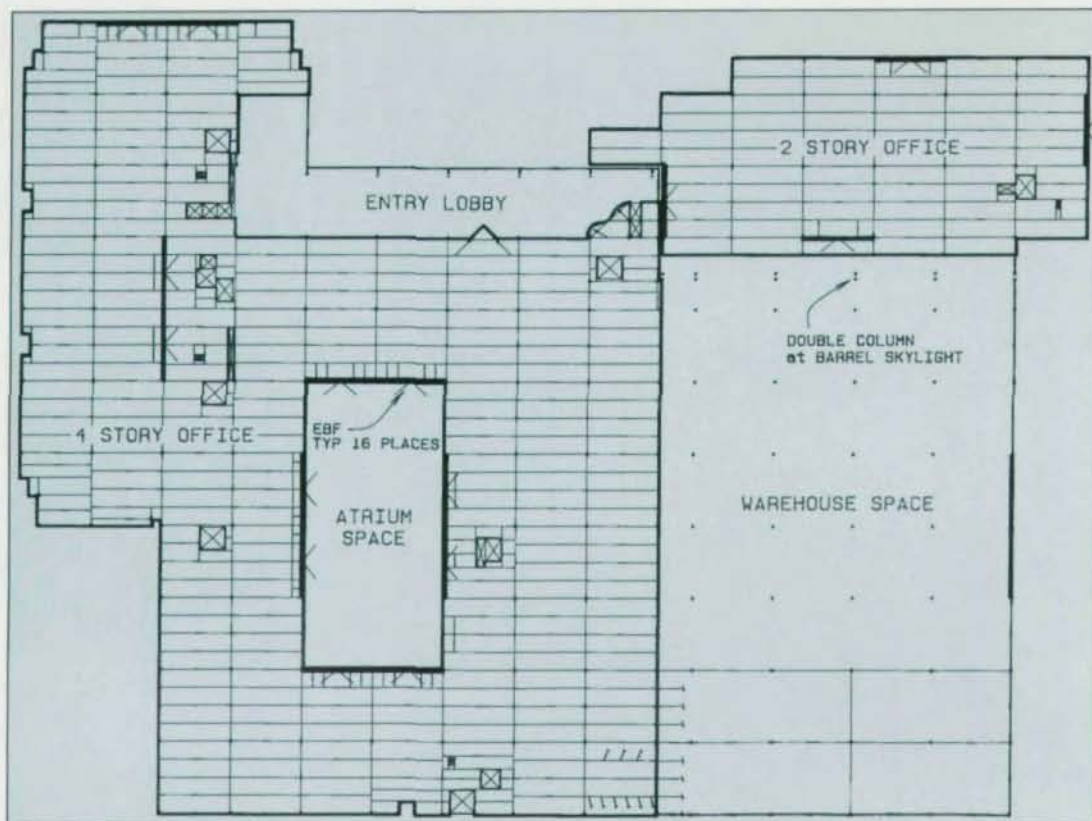
Using Ramsteel, we were able to produce a complete set of





Eccentrically braced frames were used to resist the horizontal seismic and wind forces, with the seismic forces controlling the design. Large members were used in the EBFs to minimize the number of braces required. Also, the EBFs were located along exterior walls when possible to minimize the impact on exterior office space.





In addition to seismic concerns, the designers of this 489,000-sq.-ft. building had to accommodate both office and warehouse space in an odd configuration.

New! Single-angle connections, individual prices

# CONXPRT

Fast, accurate and fully documented connection design

The complete design of shear and moment connections and column stiffeners and doublers with the following features:

- Based on the AISC Manual of Steel Construction and Volume II-Connections
- Combines the engineering knowledge and experience of respected fabricators and design engineers
- Menu driven with built-in shapes database
- Complete documentation of all design checks

**To order or for more information:**

**Phone: 312-670-2400**

**Information Fax Line: 800-644-2400**

American Institute of Steel Construction  
One East Wacker Drive, Suite 3100  
Chicago, Illinois 60601-2001



**Now order individual connections or entire modules!**

**New Version!  
New Pricing!**

**Module I ASD, v2.0 (complete).....\$410**

Double-Angle Connections.....\$110  
Single-Plate Connections.....\$110  
End-Plate Connections.....\$110  
Single-Angle Connections.....\$110

**Module I LRFD, v1.0 (complete).....\$310**

Double-Angle Connections, Single-Plate Connections,  
and Shear End-Plate Connections

**Module II ASD, v1.0 (complete).....\$410**

Directly Welded Flange Connections.....\$110  
Flange-Plated Connections.....\$110  
Column Stiffening Design.....\$210



design development drawings for all levels, complete with takeoffs, in just three days.

### Gravity Design

The total gravity support framing tonnage was established at 2,700 tons during the preliminary phase of the project using Allowable Stress Design (ASD). However, while producing the working drawings our office had decided to investigate using the Load and Resistance Factor Design (LRFD) procedure. While most of the roof framing was unchanged using LRFD, the gravity framing tonnage dropped to almost 2,400 tons, a 10% savings over ASD. Steel fabricator on the project was AISC-member PDM.

The reduction brought up serviceability concerns, but these were quickly put to rest. Our investigation of vibration indicated that although beam sizes

are reduced with LRFD, vibration perceptibility is not necessarily increased. Amplitudes increase with beam size reduction, but frequency is

Reduced, resulting in a movement on the modified Reiher-Meister scale that is parallel to the lines of perceptibility.

A more serious concern was the need for future flexibility. Since the building was being molded to suit the owner's specific needs, there was concern that the building would not be versatile enough, if the owner ever decided to sell it, and this would limit the number of prospective buyers. To remedy this, the columns in the 51-ft.-high warehouse area were designed for a future floor at the second and third levels.

To accommodate this potential future modification, the warehouse columns, which were initially designed using tube sec-

tions because of their long unbraced length and relatively light loads, were changed to wide flange sections. All plates for the future beam-to-column connections were provided prior to erecting the columns. This was due to poor accessibility to make future connections and the difficulty of shoring the 51-ft.-high roof while welding connection plates to the columns in the field.

Two unique features in this building required special considerations:

A 66-ft.-high glass wall for the lobby entry is supported by 16-in.-diameter pipe wind girts at approximately 20-ft. centers spanning 40 ft. The wind girts are supported by W33x291 columns, which also support the roof 66 ft. above. Weak axis bracing of the W33 columns was provided by the wind girts, and the entire design of the wind girts

## WHEN YOU BUY ST. LOUIS, YOU BUY AMERICAN!

AND YOU GET: • FULL TRACEABILITY  
• LOT CONTROL  
• CERTIFICATIONS

Registered Head Markings on all structural and machine bolts:



A-325  
Type 1



A-325  
Type 3



A-307-A



A-449



A-307-B

Products from 1/2"–3" diameter include:



COUNTERSUNK



SQUARE  
MACHINE



BUTTON  
HEAD

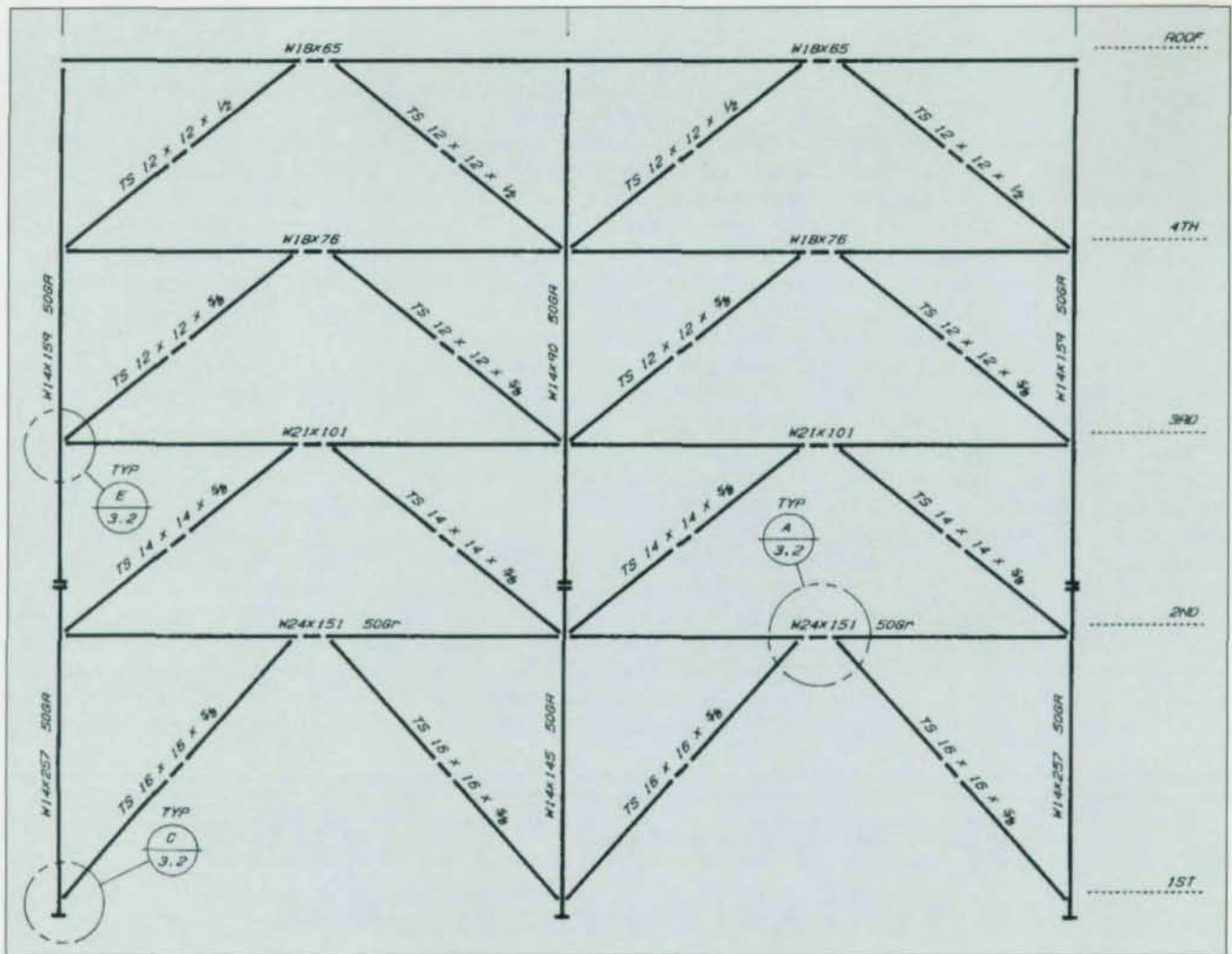
## ST. LOUIS SCREW & BOLT COMPANY

6900 N. Broadway • St. Louis, MO 63147

(314) 389-7500 • 1-800-237-7059 • Fax (314) 389-7510







and columns was controlled by the deflection limitations during wind loads.

Located between the four-story building and the seismically separated two-story building is a 15-ft. radius, quarter circle, barrel vault skylight. Double columns were chosen to provide support on one side of the skylight at the seismic separation. This avoided the intricate slip details otherwise required and allowed the seismic joint to be located in a preferred configuration for waterproofing. The double columns are 51-ft. high with a beam along the top having no horizontal bracing in either direction. To provide this bracing and reduce the span requirements, a moment frame using TS12x6x $\frac{1}{4}$  members at 10-ft. on center rolled to conform to the skylight was provided. These rolled tubes are supported at

their base by the roof of the two-story structure and at their top by the line of columns at the seismic joint. Intermediate TS12x6x $\frac{1}{4}$  tubes span between the rolled tubes and formed a *three-dimensional moment frame* that horizontally braces the columns to the lower roof structure.

### Lateral Design

The project is located in seismic zone 4. The lateral system uses eccentrically braced frames (EBFs) to resist the horizontal seismic and wind forces with the seismic forces controlling the design. The tall second floor height and the 40-ft. column spacing was not conducive to a conventional moment frame structure while still possessing a ductile mechanism for energy dissipation during major seismic events. Large members were

used in the EBFs to minimize the number of braces required and the EBFs were located along exterior walls when possible. This resulted in minimal impact to exterior office space. The total steel attributed to the EBFs is 610 tons (2.5 psf). ETABS from Computers & Structures, Inc. was used for the lateral design.

The EBFs were designed in accordance with the 1991 Uniform Building Code (UBC) as follows:

1. Preliminary beams are chosen based on the shear in the link. The beam chosen should just meet the required shear area with a maximum bending strength to force a shear controlled yield prior to flexural yield. Effects of gravity loads and axial loads must be included.

2. After the link beam is designed and the plastic strength is known, the diagonals



are plastically designed for the axial and bending loads corresponding to 150% of the linkbeam plastic shear strength.

3. After all link beams and diagonals are designed, the columns are designed to be elastic for the axial and bending loads corresponding to 125% of the plastic strength of all link beams loading the column.

4. Link beam rotation is checked by converting the allowable angle of rotation to an allowable story drift ratio and comparing the drift ratios from the program output used to model the frames. This process uses the relationships presented in the SEAOC "Blue Book" commentary.

5. Connections are designed for the capacity of the diagonal braces by drawing free-body diagrams at the critical sections at each end of the braces.

### EBF Connections

Connection configuration in the EBFs were kept as compact and concentric with the lines of action as possible to minimize local stress concentrations and connection plate slenderness. Double connection plates were used at the beam-to-column connection to both increase the bolt capacity and to avoid weak axis or torsional forces in the connection caused by the large seismic forces transferring through the connection. While groove welds were shown for the TS brace connection to the gusset plates, an alternate was issued at the contractor's request allowing large fillet welds to be substituted.

The design of the beam/brace-to-column connection was accomplished with four steps. First, the gusset plate height and thickness above the beam were determined by checking the shear, axial and bending loads at the column face between the top of the gusset and the bottom of the beam. Fixity provided by the column was neglected. Next, the length and thickness of the gusset plate along the top of the beam were designed using the

load distribution along the gusset-to-column connection determined in the first step and the brace axial and bending load to determine the loads along the top of the beam. The beam bolted connection was then designing using the column-to-plate loads from the first step. Lastly, the weld of the brace to the gusset was designed for both the axial and bending loads. The plastic strength of the connection must be greater than the plastic strength of the brace.

The design of the beam to the top of the brace connection is similar to the column connection. The critical section is checked at the bottom of the beam. In this case, the gusset is flanged on the link end so as not to project into the link length. This results in a "T" section, which is sized such that its neutral axis falls on the line of the action of the brace. Additionally, the flange was inclined to improve the connection compactness. This had no impact on erection because, either way, the flanges could not be installed before the diagonal braces were in place. Link beam stiffener plates and braces were provided as prescribed in the UBC.

At the foundation level, the braces had been modelled fixed since the foundation support was provided by friction piles. Horizontal forces were transferred to the slab on grade diaphragm and the vertical and bending loads were resisted by the piles.

Although EBFs are a recognized lateral system addressed in the code, some uncertainties still exist with design implementation. Some of these involve fixity at the ends of the diagonals, the effect of gravity beam connections on the link length, and whether the foundations should be designed for the brace elastic capacity. Regarding diagonal fixity, we found that considering the ends of the diagonals "pinned" resulted in a 20% savings in the diagonal braces. However, if the ends are



considered fixed, it is advantageous to minimize the brace-to-beam relative stiffness. To accomplish this, use tube sections with  $\frac{1}{2}$  in. and  $\frac{5}{8}$  in. wall thicknesses to minimize the flexural stiffness of the diagonals.

### Floor Construction

All floors were constructed of 3-in.-deep metal deck with lightweight concrete, using Porte Costa lightweight aggregate, for a total thickness of  $6\frac{1}{4}$  in. While we have come to expect concrete fill on metal deck to experience significant cracking, the Porte Costa aggregate concrete has given excellent performance. At our last visit, the only cracks were hairline size over the tops of the girders. Most of these floors were reinforced with #4 bars at 16-in. on center or #3 at 12-in. on center each way, but those areas with 6x6-w1.4xw1.4 mesh had no more cracking than the areas with rebar.

Contractor on the project was Koll Construction Co., Pleasanton, CA.

*Mick Wilson, S.E., and Rory Rottschalk, S.E., are, respectively, a project engineer and a vice president with Culp and Tanner, Structural Engineers, Inc., a design firm headquartered in Chico, CA.*



# Shop Painting: Myth Versus Reality

A look at what is practical, cost-effective and necessary within the painting industry

By Eric S. Kline and  
James D. Machen

From the days of our youth, many of us will recall the tales of a giant lumberjack, Paul Bunyan, who with his blue ox Babe, performed superhuman feats on the American frontier. Or perhaps you were more fond of the larger-than-life cowboy, Pecos Bill, who dug the mighty Rio Grande with his bare hands.

The myths of these American frontier characters, which have been passed down from generation to generation, are not unlike certain painting practices or trains of thought that have been prevalent in the shop painting industry. While these shop painting "myths" are not as grandiose as those of Paul Bunyan or Pecos Bill, they take on mythological qualities when the overall importance of these concerns are overstated to the point where instituting or enforcing them is no longer practical, realistic, reasonable, or cost-effective. While many of these myths may actually have a foundation as an obscure finding in some scientific study or accelerated testing process, they take on mythical proportions when their importance is over-exaggerated.

The purpose of this article is to shed the "light of reality and practicality" on these commonly held myths. The views expressed are built upon years of hands-on shop painting experience and field performance observations of what is realistic, practical, cost effective and necessary within the industry.



*Punched holes can often result in very sharp edges, which must be broken.*

**Myth: All sharp edges must be ground to a minimum  $\frac{1}{16}$ -in. radius.**

**R**eality: This myth is probably rooted in the common knowledge that coatings draw thin on sharp edges due to the forces of surface tension and capillary action. The reduced thickness of coating in such areas can lead to edge failure.

Even though this was true when most industrial coatings were oil-based, it was never true where even these materials were applied on rolled edges. Rolled edges have never been shown to require any additional preparation for painting, as the rolling process leaves a rounded edge, even though it might not be a

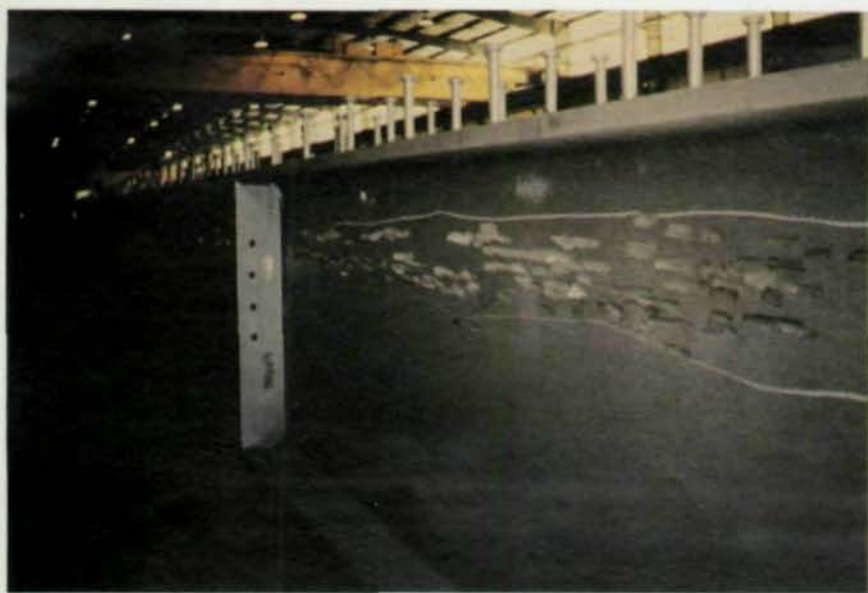
$\frac{1}{16}$ -in. radius. Even when edges are sheared or burned, it is not certain that grinding to a  $\frac{1}{16}$ -in. radius is always necessary for paint performance all the time. Highly pigmented zinc-rich paints do not flow away from the edge, and in addition, provide galvanic throwing power to protect any edges or areas not coated.

Also, these materials resist corrosion undercutting. Therefore, the requirement that burned or sheared edges always be ground to a minimum  $\frac{1}{16}$ -in. radius is questionable. The process of rounding these edges is not reasonable, practical or cost effective.

Another important fact is that technological advances by coating manufacturers have yielded other highly pigmented solvent and solvent-free epoxy formulations that have modified rheological properties and better resist flow when applied to edges. In fact, as reported in a past *JPCL* article (December 1989, pp. 16-20), as much as 80% or more of the applied film thickness of some solvent-free epoxy coatings remain on the edge. This is remarkable given standard solvent-containing coatings maintain only 30% to 50% of their applied thickness in these areas. This is strong evidence to suggest that this "myth" is highly impractical. In fact, improved specification language should include provisions that reflect the following:

Sharp edges, such as those created by flame cutting and shearing, shall be broken prior to surface preparation. (Breaking





*The hackles on this girder have been repaired by grinding. In a case such as this, re-profiling is necessary.*

the edge can be accomplished by a single pass of a grinder in order to flatten the edge.)

The rolled edges of angles, channels, webs, and I-beams are presumed to need no further rounding.

Machine fillet welds are considered a paintable surface with no further treatment required. Only weld spatter need be removed.

**Related Myth: Surface imperfections such as ridges, slivers, fins or hackles must be ground flush since they also are sharp edges.**

**R**eality: Such anomalies are surface imperfections on rolled sections and plates. They result when small (usually less than  $1/2$ -in.) areas of the steel surface are not well bonded to the surrounding surface and are bent upward during the blast cleaning, usually by a metallic abrasive. It is typically only necessary to cut off the head of isolated hackles, with no further grinding necessary. An exception could occur if there were extensive hackles in a small area; in such an instance, some further attention may be warranted.

**Myth: Due to the development of scattered "rogue peaks" when abrasive blast cleaning, an abrasive size should be used that will produce a low profile, typically some 1.0 to 2.5 mils (some specifications limit maximum profile to 1.9 mils). This is important since rogue peaks stick up through the paint and adversely affect coating performance.**

**R**eality: "Rogue peaks" are described as peaks which are abnormally high (as much as three to four times the average profile height) and infrequent and occur on an abrasive blast cleaned surface. By using abrasives that produce a very low profile, the height of these peaks is limited to 6.0 to 8.0 mils. This reasoning suggests that the rogue peaks notably harm paint performance because they actually stick up through the paint, lead to pinpoint rusting and hence premature paint failure. At first glance, this logic appears to have some merit. However, upon further examination, "real world" facts suggest it is not a significant factor in premature coating failure.

Realistically, if rogue peaks

were a significant factor, one would expect to see millions and millions of tons of blast cleaned and prime coated steel having considerable evidence of pinpoint failure. We have observed hundreds of thousands of square feet of shop primed structural steel that has been stored outdoors for extended periods of time and have not observed this to be the case.

While the existence of rogue peaks is not denied, their real-world effect appears to have been tremendously exaggerated. An early detailed study by Joseph Bigos ("Anchor Pattern Profile and Its Effect on Paint Performance," *Corrosion*, August 1959) found that anchor pattern profile did not significantly affect paint performance. This study provides support for the conclusion that controlling the blast profile within a very narrow range is an unnecessary expense. In the Bigos study, the amount of corrosion from rogue peaks was so slight that surfaces had to be examined microscopically in order to detect any rust at all. Bigos noted that surfaces containing pinpoint rust were rated on the ASTM D610 rust scale as 9.5. ASTM Rust Grade 10 equals no more than 0.01% rust, while ASTM Rust Grade 9 equals not more than 0.03%. Bigos concluded: "Anchor pattern profile below 4.0 mils in height has insignificant effect on paint performance in atmospheric exposure when as little as 1.5 mils (dry) paint are applied." To put this into perspective, imagine 1,000 sharpened pencils placed upwards, their pointed tips representing the peaks of a blast cleaned profile. Pinpoint rusting as observed by Bigos represented rusting on the tip of only 20 pencils. The cost of applying additional paint to cover the highest peak would not be cost effective, justifiable or practical. In addition to his comments about profile, Bigos also was concerned about coating performance and noted: "No evidence or justification was found





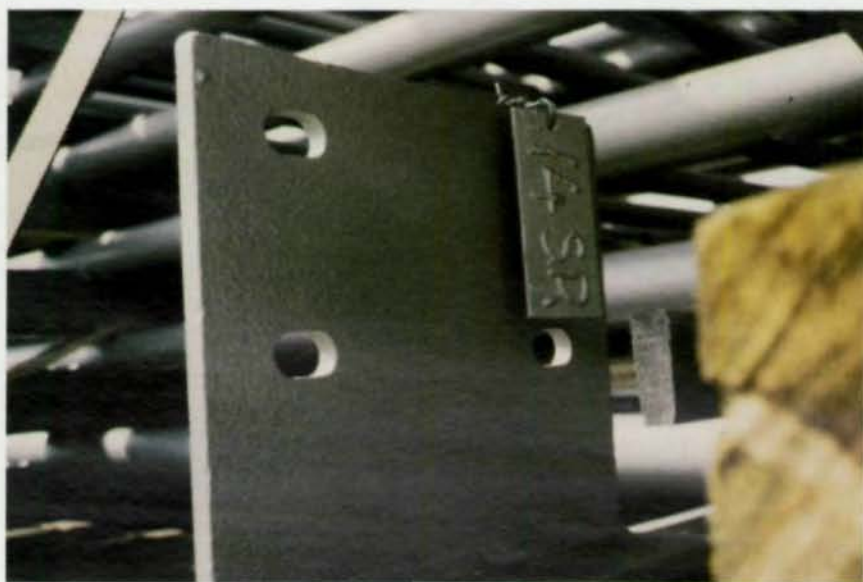


00652

the new coatings technology now exists. The recent development of low viscosity, penetrating sealers approaching 100% solids have shown considerable promise with their inherent ability to "wick" into small crevices around connection plates, bolts, nuts and washers. These "wicking-type" sealers provide an additional measure of corrosion protection. These sealers have demonstrated the unique ability to effectively prevent premature corrosion on bolted connections as well as other difficult-to-coat areas. Rather than pay to have the interior of bolt holes prepared and coated, cost-effective specification provisions should consider the following facts:

During the coating application process, any coating that lands inside bolt holes shall be allowed to remain.

If additional protection is needed after installation of fasteners in the shop or field, a pen-



Shown above is a near-perfect coating application on the interior of slotted bolt holes.

etrating sealer can be applied on a best-effort basis to seal crevices, fasteners, nuts and

washers.

While not traditional, if extraordinary special protection is

# STRUCTURAL SOFTWARE CO.


offers a full line of computer programs specifically for the steel fabrication industry. Wouldn't you like to realize the benefits that our existing 400 customers have been enjoying over the past 10 years?

SSC's integrated family of computer programs includes:



**STRUCTURAL SOFTWARE CO.**  
SOFTWARE FOR THE STEEL INDUSTRY  
P.O. Box 19220, Roanoke, VA 24019  
(703)362-9118

Estimating  
Production Control  
Inventory  
Purchase Orders  
Combining  
Automated Beam & Column Detailing



### New Automated Drawing Log

Tracks drawings, revisions, and transmittals

**Only \$299<sup>00</sup>**

Ask for a free demo disk

**(800)776-9118 Call for a FREE demo disk!**



## High Strength Structural Steels From Chaparral Put The Heat On Everything Else.

Steel is the building material of the 21st century, and it's 100% recyclable. And Chaparral is one of the most efficient steel producers in the world. Our high strength ASTM grade steel is low priced, readily available, easy to design with, and completely recyclable. Call us, and learn first hand why things are heating up at Chaparral.

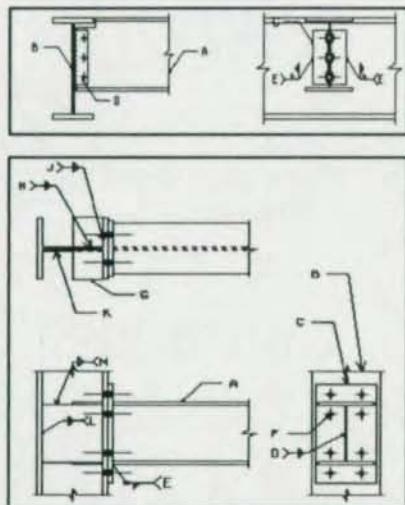
**CHAPARRAL  
STEEL**

Toll Free (800) 527-7979 Ext. 1241  
In Texas (800) 442-6336 Ext. 1241  
300 Ward Road, Midlothian, TX  
76065-9651

© 1993 Chaparral Steel

## DESCON

### DESIGNS AND DETAILS STEEL CONNECTIONS



FOR A FREE DEMO DISK  
CALL OR WRITE TO

**OMNITECH ASSOCIATES**  
P.O. BOX 7581  
BERKELEY, CA 94707  
(510) 658-8328

needed, an approach that would provide a better seal could include a sealer and wet sponge holiday testing on a one-time, best-effort basis. This level of protection should allow the detection and cost-effective remediation of over 90% of the holidays present.

**Myth: In cool weather (below 50 degrees F), it just takes longer for water-borne industrial acrylics or latex coatings to achieve full cure, but they're okay.**

**R**eality: While there have been enormous advances in industrial water-borne coatings technology, a limiting factor may be their application in cool weather, particularly at temperatures less than 50 degrees F. In many instances, curing problems with this type of coating material may go undetected, because the finished product visually "looks okay." In reality, the curing process has been disrupted on a microscopic scale, leading to permanent irreparable damage to the applied film. These coatings dry and cure by initial water evaporation and particle coalescence. Co-solvents are used that are of vital importance to the coalescence process, but at temperatures below 50 degrees F the co-solvents cannot perform their intended function. An oversimplified explanation of the curing process is as follows: water is used to carry the latex particles to a side-by-side orientation on the substrate. Co-solvents then act to physically soften these individual particles and essentially "melt" or "fuse" them together into a continuous paint film. However, at temperatures below 50 degrees F, while the water carries the particles into proper alignment, the particles are not sufficiently fused together. Even though the temperature is low, these co-solvents will still evaporate and leave the coating film without performing their intended function. At this point, with co-solvents evaporated, the

now-porous film is permanently damaged. Even though the coating may appear to be satisfactory, in fact, when so applied it will be incapable of providing the performance built into the coating formula.

In this case, the myth is wrong, because it does not just take longer for waterborne industrial acrylics or latex coatings to achieve full cure (below 50 degrees F); in fact, they may very well never achieve satisfactorily cured film properties.

**Myth: Many two-part epoxy coatings have critical recoat times. When these recoat times are exceeded, the best method of preparing the surface to receive additional coating is SSPC-SP7 "Brush-Off Blast Cleaning."**

**R**eality: The myth of this thinking lies in believing that SSPC-SP7 "Brush-Off Blast Cleaning" is the quickest and most cost-effective approach. Field experience has revealed that many sound, intact coatings are damaged unnecessarily by Brush-Off Blast Cleaning. The popularity of Brush-Off Blast Cleaning is due to the speed at which it can be accomplished. Consequently, it is many times deemed the most cost-effective and practical method by suppliers, consultants, and shop painters. However, this thought process may be short-sighted. The reality is that abrasive propelled at high velocities often damages adjacent sound coating. After Brush-Off Blast Cleaning, thousands of microscopic discontinuities may exist in the paint film. These holes often provide a path for oxygen and moisture to penetrate an otherwise sound and continuous coating film and affect future system performance in numerous ways.

A longer term, more practical approach is the use of strong solvents accompanied by sanding with a fine abrasive for non-immersion applications. The solvent will superficially soften the coating and sanding will



roughen the substrate to provide a mechanical "tooth" for adhesion. While it initially appears that this approach may be slower and more cumbersome, a significant advantage in long-term performance improvement may be realized. Conversely, some Brush-Off Blast Cleaned surfaces have been seen to fail in a matter of a few months or years. This is particularly true of aged alkyd coated surfaces. In order to establish adequate surface preparation by sanding and solvent cleaning, it is wise to apply a test patch to check intercoat adhesion. This can be done by using the methods described in ASTM D5064-90 "Standard Practice for Conducting a Patch Test to Assess Coating Compatibility."

**Myth: The highest quality paint job is achieved when the client demands unwavering, precise adherence to the specification.**

**R**eality: Every coating job has its intricacies, and to assume that a written specification could adequately anticipate every possible situation that will arise on a specific project is expecting too much. A mixture of experience, common sense, and practicality has added more years of service life to a coating project than demands for unwavering compliance to specification details. We have seen a sound paint film ground and Brush-Off Blast Cleaned in order to remove "excess" dry film thickness, and a Near-White Blast Cleaned surface re-blast cleaned with a smaller abrasive in an attempt to lower a profile that was 1 mil above specification. While there may be occasions where this is necessary, such practices in the name of specification compliance are frequently more detrimental than simply accepting the work as is. Often, the best coating projects are the ones in which a quality end product is visualized, and the precise steps used to achieve the end product are of lesser



*No further preparation is needed for a machine weld (photo courtesy of Lincoln Electric).*

importance. There is a "spirit of the specification" that may be difficult or impossible to express in the "letter of the specification." This "spirit" is often lost as the specification is enforced by an inexperienced and/or unyielding owner or by quality demand personnel. As a result, adherence to the written specification becomes of greater importance than the end product. The quality of a given painting project may be directly related to the spirit of cooperation between the owner, inspector and applicator. Reason, practicality and experience are difficult attributes to express in the form of a specification.

**Myth: Blast cleaned surfaces, which are subsequently ground, must be re-profiled to achieve effective coating performance.**

**R**eality: No data has been uncovered by us to support this notion. To the contrary, a small study undertaken by SSPC has shown that steel that had been blast cleaned, ground, and recoated performed as well in salt fog tests as steel that had been re-profiled and recoated. Limited test data and extensive field experience have

shown that the small areas (approximately 1 sq. in. and smaller) that have not been re-profiled perform as well as surfaces that were re-profiled prior to coating. While the SSPC blast cleaning specifications for Commercial (SP6), Near-White (SP10), and White Metal (SP5) address the necessity of correct damage to the profile resulting from operations that take place after blast cleaning, common sense requires the recognition that small areas covering only a few square inches may be ground and not re-profiled without adversely affecting coating performance. Likewise, common sense dictates that if large areas are involved, re-profiling may be required.

*Eric S. Kline is manager of technical services and James D. Machen is a consultant with KTA-TATOR, Inc. This article was adapted from a white paper presented at this year's National Symposium on Steel Bridge Construction. A future article dealing with other myths is under consideration. If you have any suggestions, please contact the authors at: KTA-TATOR, Inc., 115 Technology Dr., Pittsburgh, PA 15275 (412) 788-1300; fax 412/788-1306.*



### Coating Thickness Measure

A new range of Coating Thickness Gauges has been introduced by Elcometer Instruments Ltd. The Elcometer 345 is pocket-sized, yet offers a number of advanced features, including an angled screen with backlighting, so that even in the darkest corners these instruments can be easily read. Options include the entry of limits for tolerance checking and the ability to average readings. Also, one model offers memory for up to 10,000 readings.

For more information, contact: Elcometer Inc., 1893 Rochester Industrial Dr., Rochester Hills, MI 48309 (800) 521-0635; fax (313) 650-0500.

### Corrosion Resistance

A high performance, single-component urethane coating from Wasser High-Tech Coatings eliminates most application restrictions for temperature, humidity and dew point. The company's coatings will cure as quickly as four hours in temperatures down to 15 degrees F, can be applied in humidities of 6 to 99 percent, and can be wetted or immersed after as little as 20 minutes after application. The coatings offer superior corrosion resistance and can be used to encapsulate red lead. They have been specified by more than a dozen state DOTs as well as more than 10 major utilities.

For more information, contact: Wasser High-Tech Coatings at (800) MC-PAYNT.

### Fast-Curing Epoxies

Tnemec Co. has introduced Series 160 Tneme-Fasprime and Series 161 Tneme-Fascure. These fast-curing, high-performance coatings can be handled in two hours and recoated in three, making them ideal for shop applications. Tneme-Fasprime is a rust-inhibitive

primer for steel where extra corrosion resistance is needed. Tneme-Fascure is a versatile epoxy polyamide coating that can be used as a primer, intermediate or finish coat. It protects against abrasion, moisture, and certain chemicals.

For more information, contact: Tnemec Co., Inc., P.O. box 411749, Kansas City, MO 64141-1749 (816) 483-3400; fax (816) 483-1251.

### Specialized Coatings

E-Poxy Industries, Inc., offers a variety of coatings for the construction industry. A full line of EVA-POX specialized coatings are available for both new construction and renovation. The company also produces Evazote 380 ESP, an expansion joint material which handles 60% compression and 30% tension.

For more information, contact: E-Poxy Industries, Inc., 14 West Shore St., Ravena, NY 12143 (518) 756-6193.

### Environmentally Conscious Coatings

Southern Coatings, a subsidiary of Pratt & Lambert, Inc., is a leader in providing environmentally conscious primers and topcoats for the steel fabricator and joist manufacturer. The Enviro-Guard line offers lead- and chromate-free primers and coatings offering superior protection against rust and corrosion.

Complete information on Enviro-Guard VOC compliant primers, as well as Chemtec 606 Water Base Epoxy Zinc Rich Primer, Chemtec 608 Inorganic Zinc Rich Primer and Dura-Pox 646 Epoxy Mastic High Build system, is available by contacting: Southern Coatings, Inc., P.O. Box 160, Sumter, SC 29151 (800) 766-7070; fax (803) 254-4833.

### Steel Maintenance

Carbomastic 15 Low Odor from Carboline is recommended for the maintenance painting of rusty steel or for upgrading old coatings on steel bridges, metal buildings, and exposed structural steel. Only a single coat is required for most applications and hand or power tool cleaning often is acceptable. The product has excellent immersion resistance to both salt and fresh water and resists acid, alkali and solvent spillage.

Carbo Zinc 11 is used as a single coat protection of steel structures in weathering exposure and as a base coat for organic and inorganic topcoats in more severe services. The self-curing, inorganic base coat protects steel galvanically, eliminating sub-film corrosion.

For more information, contact: Carboline, Technical Service Department, 350 Hanley Industrial Circle Ct., St. Louis, MO 63144-1599 (314) 644-1000; fax (314) 644-6883.

### Technical Information

The Technical Information Packet Service (TIP) from the Journal of Protective Coatings & Linings provides a collection of photocopied information previously published in the magazine. A typical TIP runs 50 to 100 pages and will include feature length articles as well as shorter articles. Subjects from the 30 standard TIPS include: Soluble Salts and Other Non-Visible Contaminants; Achieving VOC Compliance; Cleaning and Painting Weathering Steel; Lead Paint Removal; Generic Coating Types and Their Uses; Coating Economics; and total Shop Painting. The base cost is \$5 + \$0.20 per page. Customized TIPS also are available.

For more information, contact: TIPS, (800) 837-8303.



# Mechanical Fastening Takes Hold

While welding has a proven track record, mechanical-fastening systems are gaining in popularity

**I**t's not Jordan vs. Barkley. Or Apple vs. IBM. Or even Coke vs. Pepsi.

But it is a burning question facing steel-deck contractors today: Whether to weld steel decks or to attach them mechanically.

Traditionally, welding has dominated the roof deck fastening industry—and today still accounts for nearly 85% of the market. But during the past decade, a number of contractors have begun utilizing mechanical fastening—both powder-actuated pins and self-drilling screws. Both welding and mechanical fastening systems perform up to par. Both techniques have Factory Mutual code approvals, test data that support their use and plenty of loyal supporters. There are, however, differences.

## The Established Route

"Whoever develops a method first sees that method adopted; in the steel deck industry, that method was welding," explained Randy Parrish, an engineering consultant from Germantown, TN.

According to Parrish, the biggest advantage of welding is that it has a proven track-record. "Because it has been around so long, welding has become natural for the people who install the deck." Another advantage is welding's relative low material cost. Welding rods are less expensive than the pins, loads and screws deployed in mechanical systems.

However, welding is not without its drawbacks—primarily the possibility of "burn-throughs."



*Welding of steel decks has a long track-record of success.*

Because most decks are lightweight, hot weld rods make it relatively easy for inexperienced welders to burn holes through the metal. Burn-throughs can damage not only the deck, but also the bar joist to which it is attached. When that happens, contractors must go back over the deck, repair the holes and repaint the underside. In addition, temperature differences, changes in the weather, and differences in deck material all can cause inconsistency between welds.

One solution to most of these problems is the use of weld washers, which also make the weld stronger by providing more contact between the deck and the weld—especially for sheet thicknesses less than 0.028". Unfortunately, they also can double the labor time.

Welding consistency may be further compromised by operator fatigue, which is aggravated by constant bending, stooping and working with hot equipment. Fatigue, in turn, can contribute to safety problems. According to U.S. Department of Labor data, 10% of steel-deck injuries are

caused by burns.

One other drawback to welding is that visual inspections are difficult. The only way to inspect welds are with destructive tests, which is both expensive and time consuming.

## Decreasing Operator Error

Mechanical-fastening systems eliminate many of the disadvantages that occur with welding—the lack of consistency and burn-throughs. Automated systems also decrease the margin for operator error, and in turn increase the consistency both between mechanical attachments and between jobs. The greater consistency translates into lower safety factors. While screws and pins have a typical safety factors of 2.35, welds usually have a factor of 2.75, according to the Steel Deck Institute.

However, despite the higher safety factor, in some cases welds will have a higher design shear than mechanical fastenings when similar fastener patterns are used.

One often-cited advantage for mechanical-fastening systems is the lower operator fatigue factor and the lower risk of back injury, especially for those systems that allow the operator to stand up during the fastening operation.

While pins and screws are more expensive than welding rods, mechanical fastening systems generally require a lower up-front cost than welding systems. Some mechanical systems do not even require hoses. Inspections also are easier with mechanical fasteners. A quick glance will generally show





*Proponents of mechanical fastening claim the technique saves time and therefore cuts costs.*

whether a screw is properly installed.

Some contractors have been hesitant to use mechanical fasteners in the past due to perceived safety problems. These related primarily to direct systems, where the pin was "shot" from the fastening gun at a high velocity. These systems are no longer sold in the U.S. and have been replaced with indirect fastening systems, which prevent stray pins from randomly penetrating the deck.

According to its proponents, the biggest advantage of mechanical systems is in reduced time. While experienced welders may make a weld every 10 seconds, a less experienced welder may take twice as long. "Though work habits and operator expertise play big roles, mechanical systems are generally much faster once the contractors learn how to operate the equipment."

And because the time it takes to mechanically fasten deck does not vary as much as it does with welding, contractors are able to calculate their bids more precisely.

# Deck Products

## Custom Metal Deck

United Steel Deck has enhanced its ability to produce custom deck systems by networking with the affiliated companies of Nicholas J. Bouras, Inc. Special finishes, such as plasticol, or materials such as stainless steel, are being used to produce custom decks and panels that solve durability and environmental problems caused by some industrial atmospheres. Special finishes combined with the roll forming and bending capabilities of United Steel Deck, Inc., can provide solutions to most unique decking demands.

For more information, contact: United Steel Deck, Inc. (Nicholas J. Bouras, Inc.), 475 Springfield Ave., Summit, NJ 07902-0662 (908) 277-1617; fax (908) 277-1619.

## LRFD Expert System

The Steel Deck Institute has released a new expert design system, based on LRFD, for composite and non-composite beams and girders with steel deck. This software is part of the design Advisor expert system developed for the AISC and the SDI by Structural Engineers, Inc., of Radford, VA. Complete bay design as well as individual beams and girders can be investigated and optimized for the least cost. Design tables in the SDI format can be produced using any combination of material properties. Detailed reports are produced showing vibration analysis and provide stud spacing. Concentrated loads and line loads can be applied in addition to uniform loading. Cost is \$295.

For more information, contact: Steel Deck Institute, P.O. Box 9506, Canton, OH 44711 (216) 493-7886.

## ITW Buildex

The Autotraxx ICH Deck Fastening System is used to

attach steel deck in a stitch or structural steel application. The system has two components: a stand-up tool that includes a screwgun, special fastener guidance system, depth sensitive nosepiece and unique drive socket; and Traxx fasteners with an ICH (Internal Cone Head) design.

The fasteners have either a Traxx/1 point for stitch applications or a Traxx/5 point for structural attachments. The design allows the tool drive pin to engage securely with the fastener for consistent drilling.

For more information, contact: ITW Buildex, 1349 West Bryn Mawr Ave., Itasca, IL 60143 (708) 595-3549.

## Power Distribution

Walker Division of Butler Manufacturing has introduced a new concept in PLEC distribution for steel-framed buildings—one that combines the triple-service capacity and aesthetic appeal of an in-floor system with the up-front economy of a poke-thru system. The new, low-cost Presource III bottomless activation modules are installed in a grid pattern on standard steel deck before the concrete pour, providing access to services in a predetermined pattern. Activation costs are deferred until the time of fit-out, and activations are accomplished in much the same way as with a poke-thru, except that no core drilling through structural concrete is required.

Also new from Walker is a line of service fittings in flush, pedestal and multiplex configurations for new construction or renovation.

For more information, contact: Mary Williams, Walker, P.O. Box 1828, Parkersburg, WV 26101 (800) 222-PLEC.



### Fastening System

Hilti Inc. has designed a new powder actuated fastening system for the fast, economical attachment of metal roof and floor decking. The DX 750 fastening system offers such features as single-handed operation, a power regulator and an optional fastener magazine. While 15% more powerful than the DX 650, the new introduction is 10 lbs. lighter and can be used in temperatures ranging from -13 degrees to 113 degrees F. It also features a silencer to reduce noise levels.

For more information, contact: Hilti Customer Service (800) 879-8000.

### Bridge Decking

Grid Reinforced Bridge Decks, comprised of both a fabricated steel grid and concrete, are lighter than traditionally reinforced decks and are still strong enough to withstand high traffic volumes over long periods of time (some applications are already in their sixth decade of service). The Bridge Grid Flooring Manufacturers Association maintains a computerized data base of grid related research and welcomes inquiries. The association can provide design recommendations and also publishes a newsletter.

For more information, contact: BGFMA, 231 South Church St., Mt. Pleasant, PA 15666 (412) 547-2660.

### Bridge Deck Form

Epic Metals Corp. has introduced MAXSPAN BRIDGE DECK FORM, an entirely new concept in the design of permanent metal deck forms for bridge deck slabs. The forms are designed to accommodate today's wider girder spacing with greater efficiency at spans ranging from 10' to 18'. They provide a flat top surface, which reduces concrete usage and slab dead load. This results in allowing vir-

tually all the concrete to contribute to the structural strength of the slab.

For more information, contact: Robert Paul, Product Engineer, Epic Metals Corp., Eleven Talbot Ave., Rankin, PA 15104 (412) 351-3913.

### PMD Form

Bowman Metal Deck offers permanent metal deck forms for bridge construction. According to the manufacturer, PMD forms offer three distinct advantages: time savings; cost reduction (\$4/sq. ft. estimated savings compared to wood forms); and increased safety (installation of a PMD form provides an immediate and safe working platform for all crews). In addition, PMD forms provide a lower cost means of using more widely spaced girders, which results in more cost effective steel framing. Some research also indicates that stay-in-place forms may slightly decrease deck cracking.

For more information, contact: Bowman Metal Deck Division, ARMO Inc., P.O. Box 260, Pittsburgh, PA 15230-0260 (412) 429-7560; Fax (412) 276-6057.

### Bridge Bolts

Mid-South Bolt and Screw, a distributor of all types of fasteners for the structural steel industry, is a specialist in the manufacture of anchor bolts. The company has worked closely with several DOTs, the FHWA and various bridge fabricators to develop expertise in fasteners for bridges. Mid-South supplies domestic bolts with full traceability, lot heat certification, lot integrity and in-house testing.

For more information, contact: Tim Weaver at (800) 366-BOLT or Randy Graves at (800) 251-3520.

### Inspection Walkways

Heavy Duty Grip Strut bridge inspection walkways are

suspended beneath bridge deck to enable close inspection of load-carrying members. The well-made catwalks span 24' openings with minimal deflection, which reduces the need and expense of extra supports. Also, gravel, mud, snow and ice fall through large diamond-shaped openings. Choices include 9, 10, or 11 gauge grating with serrated or non-serrated steel, and widths up to 36" with 5" integral toeboards, which eliminate extra welding.

For more information, contact: GS Metals Corp., R.R. 4, Box 7, Pinckneyville, IL 62274 (800) 851-9341 or (618) 357-5353 inside Illinois.

### Grid-Reinforced Concrete Bridge Decks

The nation's bridge engineers are rediscovering Grid Reinforced Concrete Bridge Decks. Developed and first used in the 1930s, this unique construction method results in a bridge deck, comprised of both a fabricated steel grid and concrete, that is lighter than traditionally reinforced decks, and highly armored to withstand high traffic volumes over long periods of time. In fact, some of the initial installations are well into their sixth decade of service. Supplied in large panels complete with shop-installed concrete formwork, Grid Reinforced Decks are ideal for fast-track redecking projects and also are well suited for precasting. There are a wide range of deck choices available to the designer, with deck profiles from 3" to 10", and weights ranging from 50 psf to 90 psf.

For more information, contact either: Bridge Grid Flooring Manufacturers Association, 231 South Church Street, Mt. Pleasant, PA 15666 (412) 547-2660; or the Exodermic Bridge Deck Institute, P.O. Box 374, Westwood, NJ 07675 (201) 666-5116.



## HELP WANTED — DRAFTSPEOPLE/CHECKERS

Multi-location structural steel fabricator located in the beautiful Ozarks of Missouri is seeking experienced structural steel draftspeople and checkers. Must be self-motivated and want a challenging job.

AutoCAD-DCA or PDS cad experience a plus. We offer a competitive salary with benefits.

Please submit resume with references to:

Doing Steel, Inc.  
2125 N. Golden  
Springfield, MO 65803

## FREE DEMO DISK

### \$250 Graphics Toolbox For Steel Detailers

Works from a bar type menu. All dimensions are displayed in true feet, inches, sixteenth. Developed by a steel detailer.

Oblique and right triangles, circles, rectangular bracing, stairs & connections, non-rectangular bracing, welded bracing, camber, feet-inch calculator, bracing end connections.

All onscreen graphics. No manual reference necessary. EGA monitor or better. Dos 3.0 or greater.

Glen-Nevel Systems, 3599 Nina St., Oceanside, CA 92056  
1-800-722-2945 (fax) 619-722-7356

## Ram Analysis Steel Design Software

Now get SBEAM by Ram Analysis for only \$100. Full featured composite/non-composite single beam design and analysis software (LRFD or ASD). Easy-to-use with Windows graphical interface. Full 90 day money back guarantee. Also available, the RAMSTEEL Integrated Structural Software System. Fully integrated analysis, design and drafting of steel beams, joists, columns and baseplates.

### Ram Analysis

5315 Avenida Encinas, Suite M, Carlsbad, CA 92008

Phone: 800/726-7789

Fax orders: 619/431-5214

—30 Day Trial Available—

## Structural Steel Connection Designs

BWI Engineering, Inc. provides structural steel connection and steel stair designs for fabricators, engineers and steel detailers nationwide. Our staff of professional engineers has extensive experience in both ASD and LRFD design. We take pride in tackling the most complicated structural steel projects. Our calculations are custom prepared to meet our clients needs. For your next structural steel or miscellaneous metal project, please contact:

BWI Engineering, Inc., 8605 Allisonville Road, Suite 109,  
Indianapolis, IN 46250

TEL: (317) 351-5607 FAX: (317) 351-5611

## SAVE \$ — BUY USED — ALL GUARANTEED

PEDDINGHAUS Angle Master (1983) GE Controls 6x6 $\frac{1}{2}$ ", 50 Conv

FABRILINE FS 1010 Shear 10" Angle, 10" Channel, 14 Flats (1976)

VERNET Angle Line, 6x6 $\frac{1}{2}$ "

KALTENBACH Saw HDM 1300 17 $\frac{1}{2}$ "

DOALL TF 245A Bandsaw, Vert., Tilt, w25" Power Conv., 24" x 24"

BERTSH Roll  $\frac{1}{4}$ " x 8" Initial Pinch w/Air Drop End

WELLS B-25 Bandsaw 36 x 25" CAP

CINCI 16' x 400 Ton Hydraulic Brake

CINCI  $\frac{1}{2}$ " x 10' Shear

Call or Fax For Complete List Of Saws, Ironworkers, Shears & Brakes

Westbrook Engineering Co., 23501 Mound Road, Warren, MI 48091

Ph: (313) 759-3100 or (800) 899-8192; Fax: (313) 759-3106

## STEEL SHAPING SPECIALISTS

WE CAN BEND STRUCTURAL STEEL: THE EASY WAY, THE HARD WAY, IRREGULAR CURVES, OFFSETS, ELLIPTICAL SHAPES, CIRCLES, SEGMENTS WITH TANGENTS AND WE CAN BEND IT TO TIGHT RADII WITH MINIMAL DISTORTION.

We also offer forging, the hot shaping of metals and the rolling and forming of tubing, rail and bars. Call or fax Frank Hutterer for more information.

Telephone 414-355-8220 Fax 414-355-4698

MAX WEISS CO., INC.

8625 W. Bradley Rd., Milwaukee, WI 53224

## ROLLING

Beam-Angle-Tube-Pipe-Channel-Plate

Easy/Hardway Heavy Capacities

Up to 36" W.F. Beam

209-466-9707

N.J. McCutchen, Inc.

123 W. Sonora St., Stockton, CA 95203

## Structural Steel & Miscellaneous Metal

Detailing Software with AutoCAD for structural steel and miscellaneous metal detailers. Developed by a structural steel detailing company with over 30 years in the steel detailing business. Extensive AutoCAD training is not required. English or metric. ANYTHING that can be fabricated can be detailed with this system. Beams & Columns, Plans & Elevations, Bills of Material, Stairs, Bracing & Gusset Plates.

### COMUTER DETAILING CORPORATION

1310 Industrial Blvd., Southampton, PA 18966

phone: 215-355-6003 fax: 215-355-6210

## ADVERTISER'S INDEX

AISC Database.....	34
Arkansas Steel Service.....	19
Nicholas J. Bouras .....	CII
Cadvantage .....	20
Canam Steel.....	7
Chaparral Steel.....	36
Computers & Structures Inc. ....	CIV
Conxprt.....	28
Design Data.....	8
EJE Industries.....	21
Elcometer .....	12
FAX on Demand.....	CIII
MDX.....	13
Metrosoft .....	13
National Steel Construction Conference .....	11
Nucor Yamato .....	14-15
Omnitech .....	36
RISA Technologies.....	18
Research Engineers .....	5
St. Louis Screw & Bolt .....	29
Structural Software .....	35
TradeARBED .....	3
Vulcraft .....	22-23
Whitefab Inc.....	18



**New from AISC!**

# Instant Steel Publication Information



Info on steel publications and software is only a phone call away with AISC's new Information Fax Line.

Simply call **1-800-644-2400** from any push-button phone.

By following the brief instructions and pressing just a few buttons on your phone, you can request information on:

- manuals & supplements;
- specifications & codes;
- design guides;
- technical & fabricator publications;
- conference proceedings;
- and AISC software.

Within minutes, the information you requested, along with a handy order form, will be faxed to you.

You can then fill out the order form and mail it to AISC, or for faster results, you can fax it.

AISC's Information Fax Line. The quickest, easiest way to get information on steel publications and software.

## 1-800-644-2400



American Institute of Steel Construction  
One East Wacker Drive, Suite 3100  
Chicago, Illinois 60601-2001

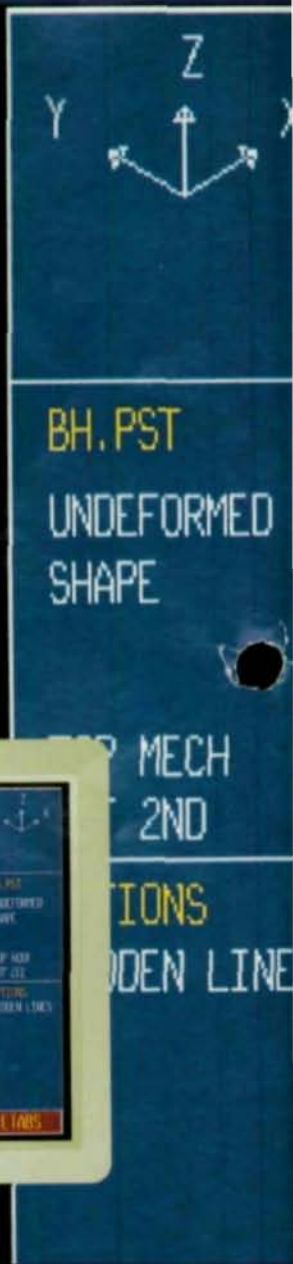


STATE OF THE ART

# Structural Engineering Software

INTEGRATED ANALYSIS AND DESIGN SOFTWARE FOR TALL BUILDINGS

Developed by Ashraf Habibullah & Edward L. Wilson



For further information:

**Computers & Structures, Inc.**  
1995 University Avenue  
Berkeley, California 94704

TEL: 510/845-2177  
FAX: 510/845-4096

**ETABS®**  
Building Analysis & Design

**SAP90®**  
General Analysis & Design

ETABS is a registered trademark of Computers & Structures, Inc.  
SAP90 is a registered trademark of Computers & Structures, Inc.  
© 1993 Computers & Structures, Inc.