

MODERN STEEL CONSTRUCTION



September 1995

\$3.00



INSTITUTIONAL CONSTRUCTION



UNITED STEEL DECK, INC.

deck design data sheet #23

ASTM specification change

The American Society for Testing and Materials (ASTM) recently issued new material specification numbers for galvanized products. The new specification is A653-94*, *Standard Specification for Steel Sheet, Zinc-Coated (Galvanized) or Zinc-Iron Alloy-Coated (Galvannealed) by the Hot-Dip Process*. There are two important changes:

- (1) The new material designation uses the grade to define the yield point.
- (2) The coating designation (G30, G60, G90) is now part of the A653 specification.

The coating designation was previously part of A525 but A525 has now been replaced with A924-94 which is a general specification covering all metal coatings (aluminum, zinc, lead-tin) applied by the hot-dip process.

Old Grade Name Under A446
grade A
grade C
grade E



New Grade Name Under A653
Structural Quality (SQ)
grade 33(230)
grade 40(275)
grade 80(550)

The numbers after the grade (33, 40, 80) are the minimum yield strengths in ksi. The bracketed numbers are metric (MegaPascals) and will be used instead of the ksi values in metric specifications.

Example: ASTM A653 SQ grade 33 with coating designation G60 replaces ASTM A446 grade A with coating designation G60.

The ASTM number for uncoated steel products (and for products painted over uncoated steel such as roof deck painted in our factory) is still A611 and the grades C, D, and E are still used.

The SDI thickness tolerance, our load tables, and our section properties have not changed. We will change the ASTM numbers in our catalogs as they are printed. The new ASTM numbers will start to appear in job specifications, but it will probably be a number of years before the old ones are completely gone. We will simply have to endure the confusion during the transition period.

* The last two digits (94) indicate the adoption year for the specification.



NICHOLAS J. BOURAS, INC.
P.O. Box 662, 475 Springfield Avenue
Summit, New Jersey 07902-0662
(908) 277-1617



Please circle # 33

“AN OPEN LETTER TO THE STEEL & CONSTRUCTION COMMUNITY”

from **ARBED**

Re: THE AVAILABILITY OF JUMBO SHAPES (14 x 426 thru 730 lbs.)

With the closing of Bethlehem Steel's 48" mill this year, we at ARBED wish to assure owners, engineers, fabricators, and contractors that we will continue to roll Jumbo shapes, give top priority to their production, and meet the needs of the U.S. market. ARBED has been supplying steel to the U.S. since 1925, and for the past twenty years has been a dependable source of medium and heavy sections. ARBED is the world's largest manufacturer of structural steel, producing over 3.2 million tons per year.

From late '94 to May '95 our large beam mill underwent an extensive modernization by adding a continuous caster and an electric arc furnace. In order to continue production of Jumbos and other heavy sections, we also decided to maintain our higher-cost ingot production. These heavy rolled sections remain less costly and structurally superior to built-up sections and are rolled regularly. To expedite delivery, all orders are continually tracked via a computer link with our mills and our ocean shipping agency. We will also continue to stock 14" Jumbos and heavy 24" to 44" WTM sections in the U.S..

We expect that the U.S. market will see little change in Jumbo beam availability. A positive innovation is that our Jumbos are available in HISTAR qualities, produced by our quenching and self-tempering (QST) process. The results are a fine grain, excellent toughness and ductility, and the ability to meet critical Charpy V-notch values. The low carbon equivalent allows for easy welding of these heavy shapes, even without preheating! HISTAR is available in both grade 50 and high strength ASTM A913/65 (Grade 65).

ARBED produces several products which are not made in the U.S.: HZ Steel Wall Systems, girder rails, some crane rail sections, high strength ASTM A913/65 beams, heavy WTM sizes, and now, 14" Jumbo sections. These products may require a waiver when used on federally-funded highway, bridge and mass transit projects. All other government projects allow the use of our steel as part of the European Community agreement signed in 1993, provided the total cost of the project exceeds \$6.5 million.

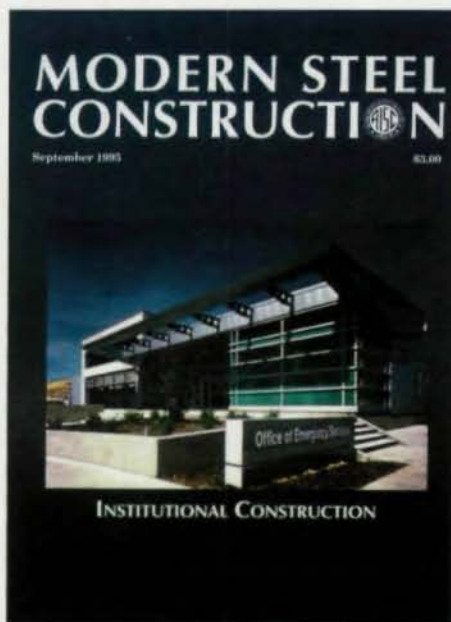
ARBED intends to continue serving the U.S. construction industry with "Quality, Service, and Innovation"!

For more information or to receive our 1995-1996 rolling program, technical brochures, floppy discs and our new CD-ROM, please send your request by fax to: (212) 355-2159 or e-mail to: tradeared@aol.com.

MODERN STEEL CONSTRUCTION

Volume 35, Number 9

September 1995



Regardless of earthquakes, fires or other disasters, the new Emergency Operations facility for Alameda County was designed to remain operational. The story behind this project begins on page 20.

FEATURES

- 16 **The Man Of Steel**
For more than 40 years, Bob Disque has been one of the leaders in steel design
- 20 **Controlling Disasters**
A new Emergency Services facility is designed to remain operational despite any disaster it may experience
- 30 **Simple Structure Yields Sophisticated Architecture**
The designers of a new high-tech lab were able to cost-effectively develop a complex architectural solution by concentrating first on the building's basic design requirements
- 38 **Designing Steel-Framed Cut-And-Cover Tunnels**
While more commonly framed with concrete, steel is often more economical for long, wide tunnels
- 42 **ELECTROSLAG WELDING FOR BRIDGES**
A new FHWA program is helping engineers and fabricators learn about this advanced welding technology

Modern Steel Construction (Volume 35, Number 9). ISSN 0026-8445. Published monthly by the American Institute of Steel Construction, Inc., (AISC), One East Wacker Dr., Suite 3100, Chicago, IL 60601-2001.

Advertising office: Facinelli Media Sales, O'Hare Lake Office Plaza, 2400 E. Devon Ave., Des Plaines, IL 60618 (708) 699-6049.

Subscription price:
Within the U.S.—single issues \$3;
3 years \$85.
Outside the U.S.—single issues \$5;
1 year \$36; 3 years \$100.

Please fax any address changes to 312/670-5403 or to the address below.

Postmaster: Please send address changes to Modern Steel Construction, One East Wacker Dr., Suite 3100, Chicago, IL 60601-2001.

Second class postage paid at Chicago, IL and at additional mailing offices.

DEPARTMENTS

- 6 EDITORIAL
- 9 STEEL INTERCHANGE
• Treatment of simple shear connections subject to combined shear and axial forces
- 12 STEEL NEWS
• Correspondence
• Book Review
• Steel Calendar
- 44 MACHINERY, TOOLS & MATERIAL HANDLING PRODUCTS
- 49 STEEL MARKETPLACE
- 50 ADVERTISING INDEX

Think #1

Think STAAD-III

Announcing the arrival of Release 21

Highlights:

- 3-6 times faster with 75% less storage
- "Concurrent Engineering" based GUI.
- On-line Manual and Tutorials.
- True 32 bit Windows and NT versions.

STAAD-III, the world's #1 Structural Analysis and Design software, has broken another frontier in power and performance.

Our new analysis engine incorporates an innovative Data Compression/Disk Caching and Reduced Numerical Instruction (RNI) technique based on the software industry's latest R & D. Designed to take full advantage of your Disk Storage and RAM resources, this unique algorithm is guaranteed to achieve the maximum efficiency in storage, management, and computation of data.

The result ?

Blazing speed (3-6 times faster than today's FE software including previous versions of STAAD-III).


Capability to solve extremely large structures - requires only 25% of conventional storage.

Graphics manipulations at dizzying speed.

Power and performance that allows you to achieve a whole new level of productivity.

For the last twelve years, STAAD-III has been consistently ranked #1 in all major Structural Engineering software surveys around the world.

STAAD-III - choice of over 50,000 engineers worldwide

 **Research Engineers, Inc.**

22700 Savi Ranch, Yorba Linda, CA 92687
Ph: (714) 974-2500 Fax: (714) 974-4771 Toll Free: (800) FOR-RESE

• USA • UK • GERMANY • FRANCE • CANADA • JAPAN • KOREA • SINGAPORE • TAIWAN • NORWAY • INDIA

Please circle # 34

Better Design

Editorial Staff

Scott Melnick,
Editor and Publisher
Patrick M. Newman, P.E.
Technical Director
Charlie Carter,
Senior Technical Advisor
Jacques Cattan,
Technical Advisor

Editorial Offices

Modern Steel Construction
One East Wacker Dr.,
Suite 3100
Chicago, IL 60601-2001
(312) 670-5407
Fax 312/670-5403

Advertising Sales

Facinelli Media Sales
2400 E. Devon Ave.,
Suite 267
Des Plaines, IL 60018
(708) 699-6049
Fax 708/699-8681

AISC Officers

Frank B. Wylie, III,
Chairman
Robert E. Owen,
First Vice Chairman
H. Louis Gurthet,
Second Vice Chairman
Robert D. Freeland,
Treasurer
Neil W. Zundel,
President
David Ratterman,
Secretary &
General Counsel
Morris Caminer,
Vice President,
Finance/Administration

GOOD DESIGN IS MORE THAN SIMPLY MAKING SOMETHING LOOK GOOD. I was reminded of that recently while reading a book, *The Design of Everyday Things* by Donald A. Norman, recommended to me by my brother-in-law, a human factors engineer.

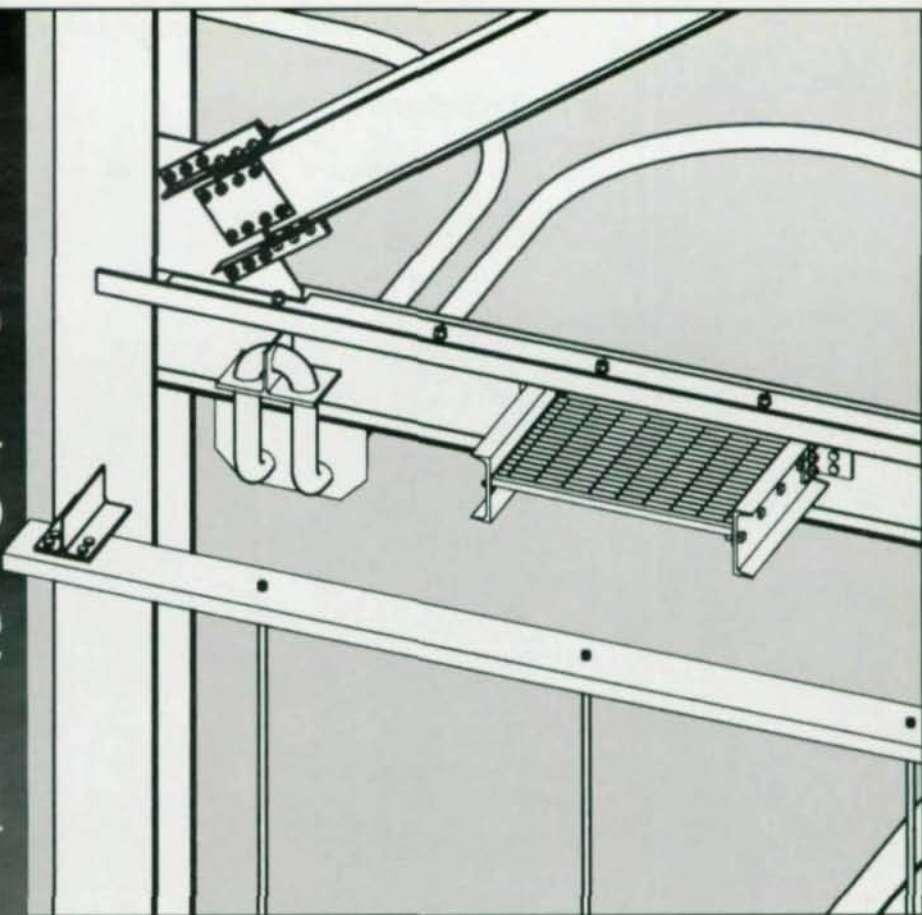
The author makes the point that beyond looking good, and even beyond functionality, a good designer creates items that are easy to use. Two examples from early in the book—doors and phones—struck my fancy, the first because our offices are afflicted with the problem of a poorly conceived portal, and the second because our offices are blessed with a well-designed voicebox from AT&T.

The main doors to our office are perfect examples of bad design as cited in the book. The doors are architecturally elegant: Two glass slabs with concealed hinges and artfully identical handles on both sides. They are also exceedingly annoying. Anyone with a rudimentary knowledge of fire safety would expect entry doors to open outwards. The problem with these doors, however, goes beyond their inwards opening. The calamity is that there are no visual clues to indicate whether to push or pull. Even people who have worked here for several years often try to open them the wrong way.

In contrast, our phones are wonderful. The problem with many phones, according to Norman, is that functions are arbitrary. For example, how do you put someone on hold or how do you transfer a call? Often, these functions involve punching in some arcane code. Likewise, how do you tell if someone is on hold? Too often there is no indication on a modern business phone. Our phones, though, are remarkably well designed. A solid green light shows an active line; a flashing green light shows someone on hold. To put someone on hold, press a button clearly labeled "hold". To transfer, press a button labeled "transfer", dial a new number, and press "transfer" again. In his book, Norman contrasts the average phone to the average car. If you walk into someone else's office, how likely are you to be able to use all of the "advanced" features on his phone? But if you borrow a neighbor's car, it's likely that all of the controls will be readily obvious.

Whether you're designing phones or buildings, doors or shop layouts, cars or computer programs, it's crucial to consider how a user will react. The clearer the design, the less likelihood for error. And in our business, errors can all-too-easily escalate from annoyance to tragedy. **SM**

SDS/2 leaves nothing to the imagination



Imagine...a software system that automatically gives you:

- Shop Drawings
- CNC Data for Shop Equipment
- Connection Design Calculations
- Labor for Estimating
- Ordering & Inventory Data
- Revision Management
- Job, member status and much more

With SDS/2 imagination becomes reality. You get details, estimates and ordering information on every piece of steel in the job—right down to the nuts, bolts and washers. SDS/2 is the only comprehensive software system for every phase in the steel industry. With SDS/2, each phase of a project creates and stores information that is integrated and utilized in the next project phase, eliminating costly data re-entry time. Project schedules, job status, drawing submittal/approval and erection planning can all be easily done using SDS/2. Whether you are an owner, engineer, fabricator or detailer, you will be able to see the money saving benefits of using SDS/2.

Don't leave anything to the imagination on your next project. Call today for more information or to set up your own personal demonstration of the SDS/2 products that include:

- Estimating
- CNC Interface
- Engineering Design
- Production Control
- Detailing
- DesignLINK

**DESIGN
DATA**

"First in...software, solutions, service"
402-476-8278 or 1-800-443-0782

Please circle # 32

We designed our mill with the same convenience in mind.

When you're in the market for steel, and you need it fast, you know there's nothing convenient about waiting for a rolling schedule. Maybe it's time you switched from a rolling mill to a stocking mill: Chaparral.

Our \$50-million on-site steel inventory is one of the largest in the world. It's so large, in fact, that we can fill over 80% of our steel orders from stock — in two weeks or less. Special orders? Fast track jobs? We'll process those within

72 hours. Even if your order changes, we'll work with you to fill it as quickly as possible.

So what are you waiting for? Next time you're shopping for steel, call Chaparral. You'll always get the right steel...right away.



**CHAPARRAL
STEEL.**

Toll Free (800) 527-7979 U.S. and Canada • Local (214) 775-8241
Fax (214) 775-6120 • 300 Ward Road, Midlothian, Texas 76065-9651



Please circle # 43

STEEL INTERCHANGE

Steel Interchange is an open forum for *Modern Steel Construction* readers to exchange useful and practical professional ideas and information on all phases of steel building and bridge construction. Opinions and suggestions are welcome on any subject covered in this magazine. If you have a question or problem that your fellow readers might help you to solve, please forward it to *Modern Steel Construction*. At the same time, feel free to respond to any of the questions that you have read here. Please send them to:

Steel Interchange
Modern Steel Construction
One East Wacker Dr., Suite 3100
Chicago, IL 60601-2001

Treatment of Simple Shear Connections Subject to Combined Shear and Axial Forces

AS ITS NAME IMPLIES, A SIMPLE SHEAR CONNECTION IS INTENDED TO TRANSFER SHEAR LOAD OUT OF A BEAM WHILE ALLOWING THE BEAM TO act as a simply supported beam. The most common simple shear connection is the double angle connection with angles shop bolted or welded to the web of the carried beam and field bolted to the carrying beam or column. This note will deal with this connection.

Under shear load, the double angle connection is flexible regarding the simple beam end rotation, because of the angle leg thickness and the gage of the field bolts in the angle legs. The AISC Manuals (A.S.D. 9th Ed. p. 4-9, LRFD 2nd Ed. Vol. II, p. 9-12) recommend angle thicknesses not exceeding $\frac{5}{8}$ in. with the usual gages. Angle leg thicknesses of $\frac{1}{4}$ in. to $\frac{1}{2}$ in. are generally used, with $\frac{1}{2}$ in. angles usually being sufficient for the heaviest load. When this connection is subjected to axial load in addition to the shear, the important limit states are angle leg bending and prying action. These tend to require that the angle thickness increase or the gage decrease, or both, and these requirements compromise the connection's ability to remain flexible to simple beam end rotation. This lack of connection flexibility causes a tensile load on the upper field bolts which could lead to bolt fracture and a progressive failure of the connection and the resulting collapse of the beam. To the author's knowledge, there has never been a reported failure of this type, but it is perceived to be possible.

Even without the axial load, some shear connections are perceived to have this problem under shear alone. These are the single plate shear connections (shear tabs) and the Tee framing connections.

Answers and/or questions should be typewritten and double-spaced. Submittals that have been prepared by word-processing are appreciated on computer diskette (either as a Wordperfect file or in ASCII format).

The opinions expressed in *Steel Interchange* do not necessarily represent an official position of the American Institute of Steel Construction, Inc. and have not been reviewed. It is recognized that the design of structures is within the scope and expertise of a competent licensed structural engineer, architect or other licensed professional for the application of principals to a particular structure.

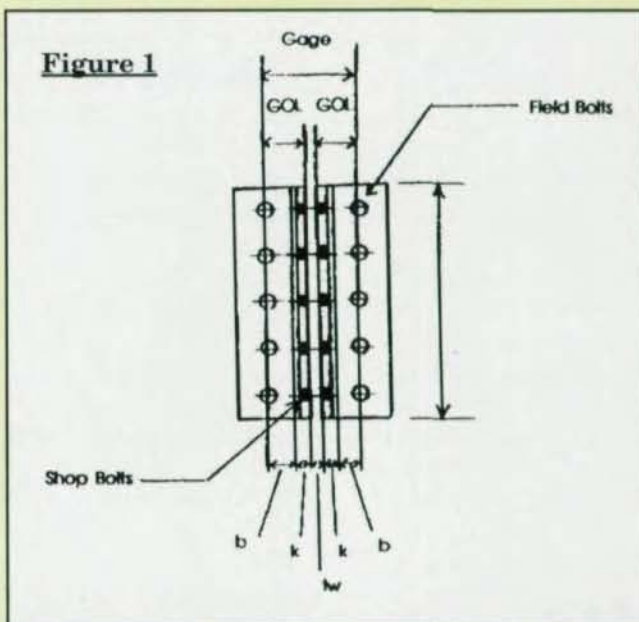
Information on ordering AISC publications mentioned in this article can be obtained by calling AISC at 800/644-2400.

Recent research on the Tee framing connections has led to a formula (AISC Manual LRFD 2nd Ed., Vol. II, p. 9-170) which can be used to assess the resistance to fracture (ductility) of double angle shear connections. The formula is

$$d_{b \min} = 0.163t_f \sqrt{\frac{F_y}{b} \left(\frac{b^2}{L^2} + 2 \right)}$$

where:

- d_b is the minimum bolt diameter (A325 bolts) to preclude bolt fracture under a simple beam end rotation of 0.03 radian, and
- t_f is the angle thickness
- b is the distance from the bolt line to the k distance of the angle (see Fig. 1)
- L is the length of the connection angles.



Note that this formula can be used for ASD and LRFD designs in the form given above. It can be

STEEL INTERCHANGE

used to develop a table (see Table 1) of angle thicknesses and gages for various bolt diameters which can be used as a guide for the design of double angle connections subjected to shear and axial tension. Note that Table 1 validates AISC's long-standing recommendation (noted above) of a maximum 5/8 inch angle thickness for the "usual" gages. The usual gages would be 4 1/2 to 6 1/2 in. Thus, for a carried beam web thickness of say 1/2 in., GOL will range from 2 in. to 3 in. Table 1 gives a GOL of 2 1/2 in. for 3/4 in. bolts (the most critical as well as the most common bolt size). Note also that Table 1 assumes a significant simple beam end rotation of 0.03 radian, which is approximately the end rotation that occurs when a plastic hinge forms at the center of the beam. For short beams, beams loaded near their ends, beams with bracing gussets at their end connections, and beams with light shear loads, the beam end rotation will be small and Table 1 does not apply.

Table 1
Estimated Minimum Angle Gages (GOL) for A36 Angles and A325 Bolts for Rotational Flexibility

ANGLE THICKNESS (in.)	MINIMUM GAGE OF ANGLE (GOL)*		
	1/2 in. dia. bolt (in.)	3/4 in. dia. bolt (in.)	1 in. dia. bolt (in.)
1/4	1 1/2	1 3/4	1 7/8
1/2	1 7/8	2 1/8	2 1/4
3/4	2 1/2	2 7/8	3 1/8
1	3 1/4	3 7/8	4 1/4

*Driving Clearance may control minimum GOL.

The design of double angle connections subjected to shear and axial tension, can be accomplished as shown in the following AISC publications.

1. AISC Manual (ASD 9th Ed.), p. 4-94, Ex 34, where the beam web plays the same role as the gusset of this example.
2. AISC Manual (ASD 9th Ed./LRFD 1st Ed.) Vol. II, pp. 7-123 and 124, pp. 7-125 and 126, pp. 7-167 through 170.
3. AISC Manual (LRFD 2nd Ed.), Vol II, pp. 11-38 through 42.

While the design is being completed in the usual way as show in these publications, Table 1 can be consulted to guide the design, if appropriate.

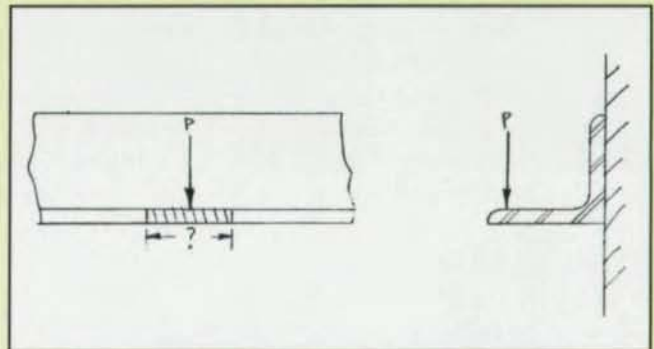
W.A. Thornton
Roswell, GA

New Questions

Listed below are questions that we would like the readers to answer or discuss.

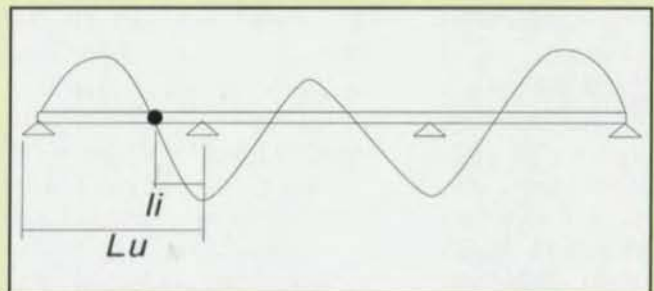
If you have an answer or suggestion please send it to the Steel Interchange Editor, Modern Steel Construction, One East Wacker Dr., Suite 3100, Chicago, IL 60601-2001.

Questions and responses will be printed in future editions of Steel Interchange. Also, if you have a question or problem that readers might help solve, send these to the Steel Interchange Editor.



When considering a point load on the standing leg of an angle, what provisions are there for determining the effective allowable member width?

David Chida
Electric Power Door
Hibbing MN



When is it conservative to select the beam shown assuming the unbraced length of l , and $C_b = 1.0$?

New Plans and Software for Short-Span Steel Bridges



This two-volume Short-Span Steel Bridge Package contains more than 1,100 predesigned steel superstructures with details, plus user friendly, PC compatible software, that will bring you quick, efficient solutions to many simple-span non-skewed bridges.

The plans tabulate the design of bridges that are 20 feet to 120 feet long in five foot increments for 24, 28, 34, 40 and 44 foot roadway widths. The software provides back-up calculations to the pre-designs and allows the engineer to custom design, code check or rate the bridge.

The package was developed by Dr. S. Taavoni, PE, of Kennedy Porter & Associates for the American Iron and Steel Institute in collaboration with AISC Marketing, Inc. Sponsors of the package include Bethlehem Steel Corporation, Inland Steel Industries, Lukens Steel Co., and U. S. Steel.

- With AISI's new comprehensive short-span steel bridge package designers can minimize design time and project cost. Quickly explore design and detail options for:
- Welded plate girders with unstiffened and partially stiffened webs
 - Rolled beams with and without cover plates for composite and non-composite construction
 - Normal and lightweight concrete deck
 - Elastomeric bearings
 - Jointless and conventional abutment information
 - Crash tested Jersey barrier
 - Tables of reactions, moments and deflections
 - Table of quantities for each design (structural steel, rebar and concrete)
 - AASHTO's Load Factor Design
 - HS25 Live Load
 - Over 150 11" x 17" design and detail sheets
 - Much more!!!

Please send me:

- Information about the AISI Short-Span Steel Bridge Package.
- A copy of the AISI Short-Span Steel Bridge Package (payment enclosed).

Ship Short-Span Bridge Package to:

Name _____
 Company _____
 Address _____
 City _____ State _____ ZIP _____
 Phone _____ Fax _____

FAX: 202-463-6573 or
MAIL: American Iron and Steel Institute
 1101 17th St., NW
 Washington, D. C. 20036
TEL: 202-452-7140



Order Form

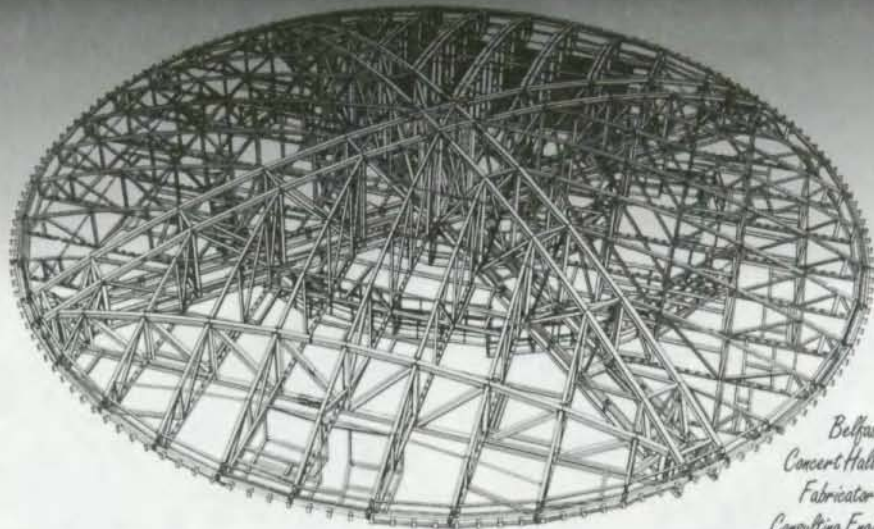
Short-Span Bridge Package ___ @ \$150 = \$ ___

Additional shipping and handling will be added for orders outside the U. S.

- Check Visa Mastercard
 (payable to AISI)

Cardholder Name _____
 Card Number _____
 Expiration Date _____
 Signature _____

STRUCAD[®] 2000



*Belfast, Northern Ireland
Concert Hall dome detailed using Strucad
Fabricator—Fisher Engineering Ltd.
Consulting Engineer—Kirk McClure Morton*

Finally, a 3-D detailing solution that will produce 100% of your work.

The future of steel fabrication is here. Steel Solutions introduces STRUCAD 2000—3-D detailing software that dispenses with manual drafting operations and results in productivity gains up to 5-to-1.

Developed specifically for steelwork, STRUCAD 2000 allows the user to interactively construct a 3-D wireframe model of a steel structure using a PC workstation. Connection types can be designated from an extensive library of standard connections or the user can easily create any non-standard detail at any location in the structure and save it to a library for reuse. Automatic clash detection eliminates error.

From the solid model, it is possible to produce all drawings and material lists completely automatically. STRUCAD 2000 automatically creates field erection drawings, shop detail drawings, fitting details, full-size templates, 3-D erection drawings, and CNC manufacturing data for a wide range of workshop machinery. Data downloads from STRUCAD 2000 directly to CNC machinery to ensure accurate and consistent results.

Integration between STRUCAD 2000's design and detailing data and the production control and management data of STEEL 2000 is seamless. Structures designed in STRUCAD 2000 will flow through all aspects of estimating,

detailing, multing, purchasing, receiving, production, shipping and erection with complete traceability. The estimated labor to produce any structure that is designed or detailed in STRUCAD 2000 can be printed from STEEL 2000 Estimate with a few keystrokes.

STRUCAD 2000 is interfaced to a large variety of other software packages including AutoCAD applications, STAAD-III from Research Engineers, Intergraph's Mica Plus Analysis and PDS, PDMS from Cadcentre, and PASCE from CE Automation, to name only a few.

Proven in production for six years, there are more than 400 STRUCAD systems installed throughout 22 countries. Now available in imperial units, Steel Solutions is pleased to market and support STRUCAD 2000 in the United States.

To facilitate use of this powerful tool in your plant, Steel Solutions offers a low-cost, five-day training course for your employees at our Training Center in Jackson, Mississippi. In addition, regular user group meetings at the Training Center will ensure that on-going requirements are constantly being integrated into STRUCAD 2000.

Call today to find out more about how STRUCAD 2000 can reduce your detailing costs and eliminate expensive manufacturing and site errors.

Please circle # 98



2260 Flowood Drive • P.O. Box 1128 • Jackson, MS 39215 • 601-932-2760 • Fax 601-939-9359
Support/Development • Rt. 3, Box 312A • Buckhannon, WV 26201 • 304-472-2668 • Fax 304-472-3214
STRUCAD is a registered trademark of ACECAD Software Ltd., England, U.K.

06110

SOME OF THE MOST AWARD-WINNING PERFORMANCES IN THIS STADIUM'S HISTORY TOOK PLACE DURING ITS CONSTRUCTION.



Although the new Atlanta Stadium won't host any Olympic performances until 1996, **Carboline 861** primer has already helped its steel beam fabricator achieve a gold medal performance.

The fabricator was able to apply **Carboline 861** directly to the beam's connecting and faying surfaces without masking the ends of the beams and columns. This feature saved the fabricator a significant amount of time and allowed it to meet the Atlanta Stadium Design Group's tight deadline within budget.

Carboline 861 is an organic zinc primer designed for surface-to-surface contact of

painted steel beams, even in areas of critical bolting. It's one of the only zinc primers that combines the ASTM A-490 Class B slip-co-efficient and creep testing criteria with fast dry-to-topcoat turnaround.

Carboline has over 50 years' experience creating coatings that make real differences on real-life jobs. To learn how we can help your jobs run faster for less cost and with gold medal results, call Carboline's award-winning team at 800-677-0753.



A Total Quality Company
350 Hanley Industrial Court
St. Louis, Missouri 63144

an **ppm** company

Toll-Free 800-677-0753
Phone 314-644-1000
Fax 314-644-4617

- I want the full story. Please send me the Atlanta stadium case study, complete with cost-saving tips for faster steel beam fabrication.
- Please send me your specification for the application of Carboline 861 organic zinc epoxy primer and a product data sheet.

Name _____

Title _____

Address _____

City _____

State/Zip _____

Phone _____

Fax _____

Please circle # 26

MAX WEISS

STEEL SHAPING SPECIALISTS



UNUSUAL SHAPES AREN'T UNUSUAL AT MAX WEISS.

ROLLING & FORMING
BLACKSMITHING
WELDING & MACHINING
INDUSTRIAL AND CONTRACTORS SUPPLIES



IRREGULAR CURVES,
VERTICAL OFFSETS,
ELLIPTICAL SHAPES,
CIRCLES, OR SEGMENTS
WITH OR WITHOUT TANGENTS

If it's structural steel that needs to be bent, for major architectural projects or for unique applications, chances are, Max Weiss bends it. If you have a question or problem in bending, call, FAX or write Dept. M93 for a solution. **TAKE IT TO THE MAX.**

max weiss

MAX WEISS CO, INC.
8625 W. Bradley Road
Milwaukee, WI 53224 USA
Telephone: 414-355-8220
MAX FAX 414-355-4698

Please circle # 56

STEEL NEWS

CORRESPONDENCE

Dear Editor:

While most of Mr. [William G.] Zimmerman's ideas (May 1995, pp. 30-33) are good practices and will reduce project costs, there are certain items that are not universally true and could mislead designers. For instance, field welding of beam-to-column moment connections oftentimes results in a lower overall cost to the project than bolting. This is particularly true in larger buildings where the moment loads can be very high. As you can imagine, shipping a column with long wingplates extending off of each column flange can make the width of the columns in excess of 9 ft. This width will result in permit loads which, over long distances, can be quite expensive. They also limit the amount of material you can place on a truck and the plates are subject to damage in transit. Another problem with the big plates is their large hole patterns, which can be difficult to make up in the field without reaming. The common response to avoid reaming is to use over-size holes, but this makes the plates even bigger by adding additional bolts due to lower bolt values. So, while it true that welding is more expensive than bolting in the field and does require higher-skilled people, in many areas of the country the skilled welders are available and the process is very comparable to bolting. When coupled with the savings in the shop, field welding can yield a very positive and economical result to the job, and should not be rejected out of hand.

Further, fillet welds are not always the cheapest. On very large welds, such as column splices, a partial penetration weld often is a more economical alternative than a large fillet weld.

We agree with Mr. Zimmerman that on bigger projects where large gusset plate

connections for bracing, etc., are required to handle large kip loads, use of twist-off bolts, especially in multi-ply connections, is not economical. In trying to snug up multiple plies with large diameter twist off-bolts bolts, oftentimes the bolt twists off before the connection can be made tight and torqued to the proper tension. We have found success with the twist-off bolts in lighter steel and two-ply connections. Again, it's a matter of preference, but people should be aware of the subtleties and remember that, unfortunately, "one-size" does not always "fit all."

Michael J. Senneway
V.P. & General Manager
SMI-Owen Steel Company

Dear Editor:

First of all, let me say that *Modern Steel Construction* is a very interesting and informative magazine that this reader has enjoyed for several years.

However, the Steel Joist Institute feels that a response is warranted regarding your article titled "An Alternative to Joist Girders," appearing in the June, 1995 issue. Yes, joist deliveries are extended at the present time and, although joist manufacturers are hoping for a prolonged period of near capacity production, the present situation must be viewed cautiously. One only has to remember back a few months to recall joist deliveries in the one-to-two-week range, and if history is any guideline, shorter delivery times will prevail again all too quickly.

The Steel Joist Institute does take exception to the article's opening sentence. The writer's statement referencing only two major producers is a "major" misnomer. Steel Joist Institute members operate 23 joist plants that can readily provide steel joists in sufficient quantity to meet the needs of the industry during times of normal demand.

Secondly, the article contains an error in product terminology. Steel Joist Institute products lines include the "K" Series Joists, the "LH/DLH" Series Joists and the Joist Girders. We do not have "K" Series Joist Girders.

We feel that one of the primary goals of a quality technical publication, such as *Modern Steel Construction*, is accuracy of content. Our critique is an effort to support that goal.

R. Donald Murphy
Managing Director
Steel Joist Institute

.....
CORRECTION

The telephone number for Chaparral Steel was incorrectly printed in the July Steel Producers listing. The correct number is: 800/527-7979.

BOOK REVIEW: SSRC VOLUME MARKS 50 YEARS OF PROGRESS

By Rober F. Lorenz, P.E.

Anniversaries are significant not just as an indicator of staying power, but also as an opportunity to reflect on the past and also to consider the future. The Structural Stability Research Council scores on both accounts in publishing the Proceedings of its 50th Anniversary Conference held last summer at Lehigh University.

The 400+ pages include 27 papers written by a broad range of independent experts, all connected by their technical leadership in the stability of steel structures. The papers include such topics as laterally unsupported beams, curved girders, inelastic framing systems, tubular members, shells, stability of angle struts, stability under seis-

mic loading, influence of connection details on stability, new constructional steels, and other equally pertinent topics.

In reviewing the book, it seemed there was always some succinct, easily-understood technical information in each paper, which indicated a scrupulous job of compilation and editing. Each separate work literally provides a tutorial that can be logically followed with plenty of figures and graphs from research to make a clear and rational statement to the reader.

An example of the above can be found in the paper by Takanashi and Nakashima on stability considerations on seismic performance of steel structures. Starting with the simple differential equations of single degree of freedom systems, they

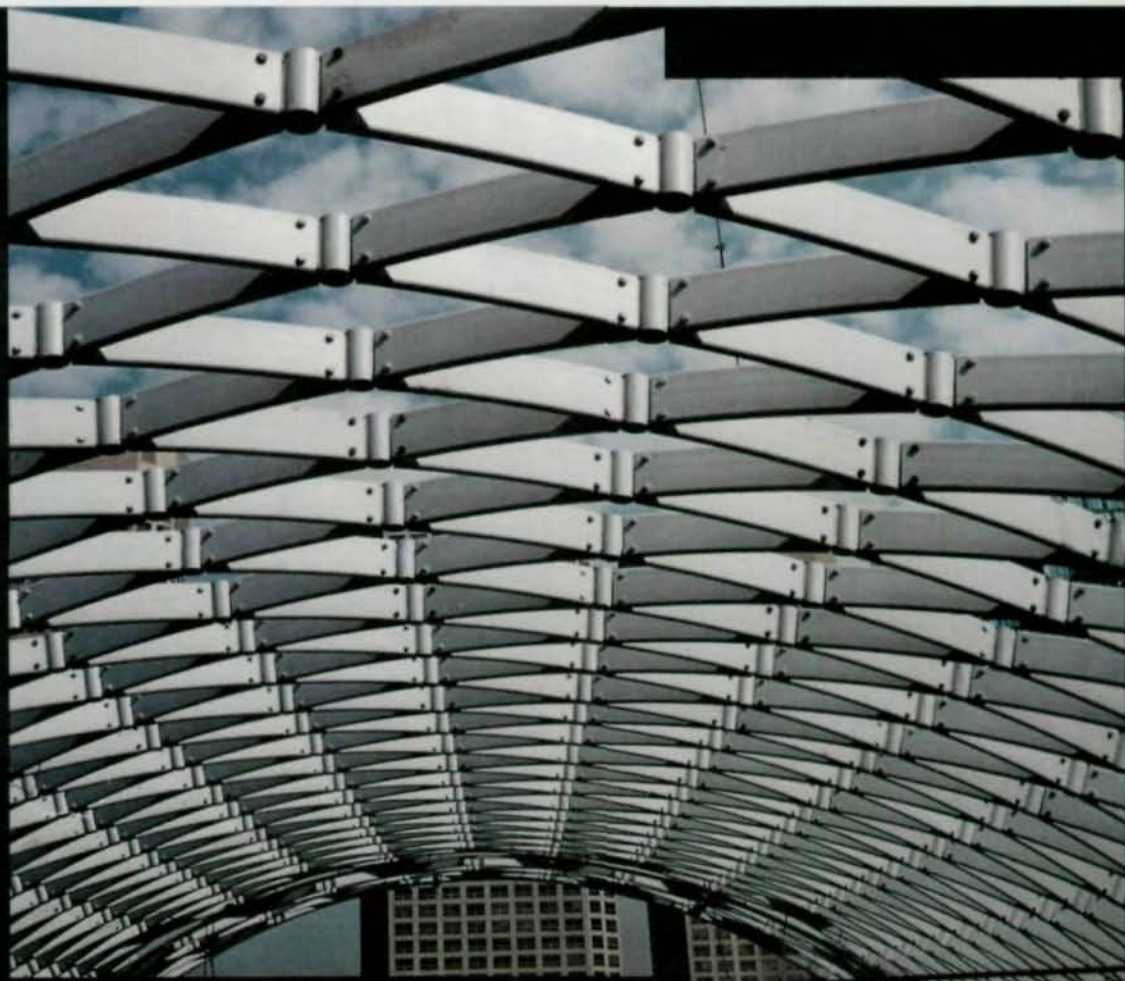
**ZALK
JOSEPHS
FABRICATORS INC.**

Specialists
In Complex
Fabrication
Of Structural
Steel

AISC CERTIFIED
LEVEL II & III

400 Industrial Circle, Stoughton, Wisconsin 53589 • 608-873-6646 • FAX 608-873-1694

Please circle # 88



STEEL NEWS

develop the concept of energy dissipation, and from this create simple expressions for both system and member ductility. More important, they are able to deduce preferred trade-offs between strength and deformation, so the reader can get an intuitive feel for particular decisions of varying ductility in a given structural framework.

Separate papers by Galambos and Kennedy provide a historical perspective of the early years of the Council, which originally was known as the Column Research Council. Its early task was to resolve the many variables in the design of compression members including crookedness, eccentricity of loads, end conditions, drift and residual stresses. The result was the column formulas adopted by AISC in their 1962 Specification, which introduced the well-known K-factor for the first time.

As mentioned earlier, the

technical content of the book is compelling, and the diversity of the subject matter holds the interest of the reader. Because of the recent experience of destructive earthquakes worldwide, particular interest in papers by Popov, Fukumoto and Leon provide some direction for new research in that direction.

As far as the future is concerned, the paper by White is stimulating. He sees computer technology eventually creating tools to evaluate systems, where within each system, member design would be predetermined. This would open up new pathways in research in the development of reliable computational models.

Robert F. Lorenz, P.E., is AISC's Director of Education and Training.

CALENDAR

AISC 1995 Seminar Series: "Advances In Structural Steel Design"

Includes sessions on bolting, high-strength steel, frequently asked steel questions, and LRFD.

9/7New York City
9/12Meriden
9/14Boston
9/21Dallas
9/26Denver
9/28Kansas City
10/3Birmingham
10/5Atlanta
10/10Detroit
10/12Indianapolis
10/17Cleveland
10/18Columbus
10/19Cincinnati
10/24Memphis
10/26Nashville
10/31Pittsburgh
11/2Edison
11/7New Orleans
11/9Albuquerque
11/28Miami
11/30Orlando

Call 312/670-5422
or fax 312/670-5403

1996 National Steel Construction Conference

March 27-29 in Phoenix

Six tracks: Computers, Erection, Fabrication, Construction Management, technical engineering and engineering management

Call 312/670-5433
or fax 312/670-5403

1996 ASCE Structures Congress

April 15-18 in Chicago

Includes sessions on Tall Buildings, Structural Stability, and Analysis & Computation

Call 212/705-7496

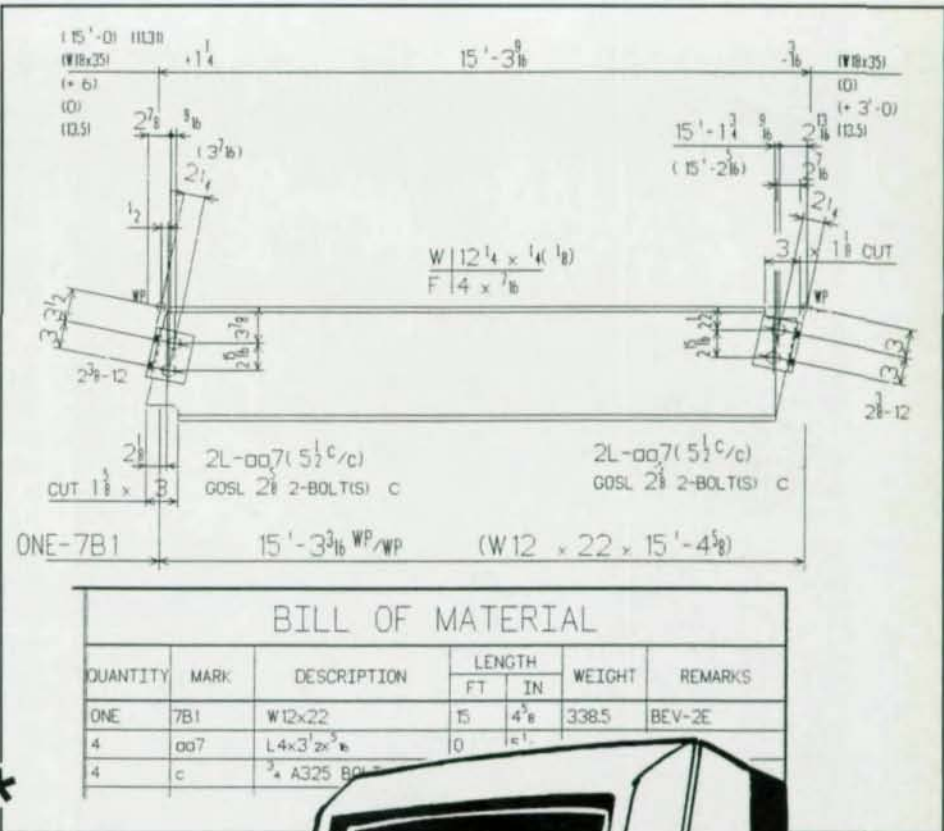
POP QUIZ



How long would it take you to fill in the blanks?

1. Beam size _____
2. Left framing condition _____
3. Right framing condition _____
4. Beam span _____
5. Left beam size and elevation _____
6. Right beam size and elevation _____
7. Left beam distance to top of steel _____
8. Right beam distance to top of steel _____
9. Quality _____

that's how long it would take to produce these:



STEELCAD has revolutionized the steel detailing industry by developing the only CAD system that produces almost instantaneous drawings simply by filling in the basic specs. Drawings are produced in a fraction of the time and errors are virtually eliminated. Detailers are freed from tedious tasks and able to more productively utilize their time and skills.



Call us to schedule a demonstration

800-456-7875



* Based on the following answers: 1. W12X22; 2. Beam; 3. Beam; 4. 15'-0; 5. W18X35/6"; 6. W18X35/0"; 7. 0"; 8. 3'-0; 9. 1

Please circle # 84



THE MAN OF STEEL

For more than
40 years, Bob Disque
has been one of the
leaders in steel design

By Katie Brown

IN 1944, WHEN ROBERT DISQUE WAS A SENIOR IN HIGH SCHOOL, he wrote a theme paper about the collapse of the Tacoma Narrows suspension bridge four years earlier. Though he knew nothing about designing and building bridges, he instinctively felt that "Galloping Gertie" had been doomed from the start.

"In reading the material, I knew that the design engineer on that bridge had done his mathematics and all his calculations, and they all worked according to his theory," Disque explained. "But the proportions of the bridge far exceeded anything that had been done before. I believe the engineer was so enthralled by his mathematics that he lost the overall view."

Disque, now 68, has built his career on separating the slag from the metal in structural steel construction. A former director of building technology and chief engineer of the American Institute of Steel Construction, Disque has helped scores of fabricators and engineers find solutions to the structural problems they encounter. While known as a demanding designer, his benchmark is not just excellence in design, but also practicality. And it is not uncommon for him to advise designers to talk with—and listen to—steel fabricators. But beyond the years of dispensing advice, Disque has made his mark on the industry through his contributions to the mathematical foundations for the integrity of simple shear connections and his aid in the development of bolting standards. And he's not through yet—he's now working as a consulting engineer in Connecticut and just last year he co-authored a new textbook on LRFD. He also remains something of an industry gadfly, sparking debate on topics such as the role of computers in design engineering and the use of partially restrained moment connections.

"He's pretty much known as 'Mr. Steel,'" said Barry Barger, vice president of AISC-member Southern Iron Works, Inc. "Bob knows fabrication and he's an engineer. To him, there's no such thing as an impossible problem."

PRACTICE VS. THEORY

Over the year's, Disque has devoted his energy to proving the approaches that other engineers and fabricators have developed through experience. Upon graduating in 1950 with a degree

in civil engineering from Northwestern University, he took a job with a design firm and quickly learned that the real world was different from the classroom.

"I was making a [semi-rigid] design, and my boss asked me what I was doing," Disque recalled. "I told him, and he said, 'We don't do it that way. We do it this way.' I said, 'That's not correct. That's not what we were taught in school.' And he told me, 'You can do it the way we do it, or you can stay home tomorrow and start looking for another job.'"

Disque designed it the way he was told using simple shear connections—an approach common in the engineering offices of the 1930s and '40s, but one which had not yet been introduced to the classroom since the scientific underpinnings of the method had not yet been fully developed. "The engineers in those days didn't understand the mathematics of it, but their instincts were superb," Disque said. "They instinctively knew [PR construction] was going to work." And work it did on such superb projects as the Empire State Building and the United Nations Secretariat, which Disque likens to a sail: "It gets hurricanes thrown at it and performs very well. The bottom line is behavior—it has worked."

After realizing success on his first assignment, Disque became an advocate of simple shear connections. And then, in 1964, he became their champion. He was working as the chief engineer at AISC and the City of New York was having its building code rewritten "by people who had strong academic backgrounds but little practical background," Disque said. Because simple shear connections had never been mathematically rationalized, they were not acceptable under the proposed code.

"I heard about it, and that's what prompted me to do some real hard thinking to come up with a rationalization," Disque said. The result of his work was a paper, "Type 2 Construction with Wind Connections," which proved the science and compelled the code reviewers to allow simple shear connections.

Disque has helped fabricators and engineers find solutions to their problems on a smaller scale, too. Southern Iron Work's Barger recalled the day in 1978 when he met Disque—after Barger had come from a long, discouraging

meeting with a structural engineer about end-plate moment connections on a job. "They were trying to convert from a wing-plate system to an end-plate moment system," Barger said. "They had a pre-cast plank that sat on the top flange of the beam, and the wing-plates interfered with them. The engineer didn't know how to make an end-plate work in a roof application." Before flying home to Virginia, Barger decided to stop in at AISC's offices, then located in New York, to see if there was a technical person there who could help him find an answer. He was introduced to Disque and presented his problem. "Bob said, 'Oh, that's simple,' and he pulled out a book and said, 'Here's your answer. Who's the engineer?'" He called the engineer, told him the solution, and then said to me, 'What else do you need?' The whole thing took about 10 minutes," Barger recalled.

SNUG-TIGHT BOLTS

One of Disque's major contributions to the steel construction industry was his work on bolting. In the mid-1980s, a fabricator was suing a general contractor who refused to pay him on the grounds that the bolts in the project had not been tightened fully with impact wrenches according to project specifications. Disque had read much of the research on the basic behavior of bolts and understood the problem.

When high-strength bolts began to replace rivets as fasteners on steel construction projects, the standards for tightening did not change, even though the bolts were $2\frac{1}{2}$ times as strong (100,000 psi compared with 40,000 psi for rivets). While Disque conceded that

In 1964, when Disque was chief engineer at AISC, he wrote his groundbreaking paper on simple shear connections in an effort to have them accepted in New York City's new Building Code.



if the fabricator had not fully tightened the bolts he had violated the letter of the contract, but he contended that it didn't make a difference to the intent of the contract, which was to ensure a safe building. Ultimately, the suit was set-

tled out of court. "But I knew at the time that it didn't make any difference from a structural point of view" if the bolts were fully tightened or snug-tight. "As a result, I proposed that under certain circumstances, bolts don't have to be fully tightened," Disque said.

"When we go from one technology to another, an awful lot of the technology you had before carries over," he explained. "If you look at the first airplane that the Wright brothers built, it looks almost like a bicycle. The first cars look like horse-drawn carriages. Going from rivets to bolts, the bolts inherited a lot of things that did not apply, and it took a while before bolts could stand on their own without suffering their inheritance."

Many academics fought against changing the regulations, Disque said, but they couldn't come up with a convincing argument against the proposal. Ultimately, in 1985, the Research Council on

Structural Connections adopted the change. The benefits to erectors and developers has been tremendous: the cost of fastening bolts dropped from about \$30 per bolt to \$10 per bolt in 1985 dollars. "You don't have to have an impact wrench with air compression and hoses. You just have an iron worker with a wrench banging them up snug," Disque said.

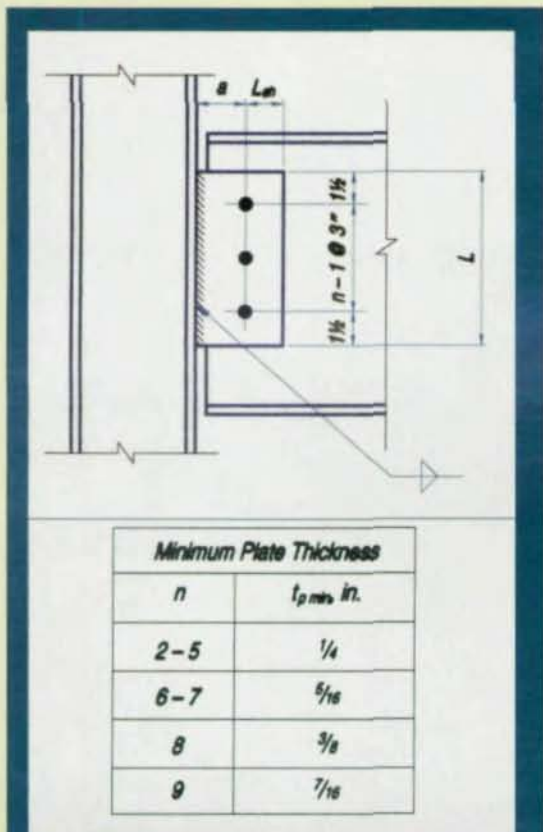
While Disque has worked to make sure that regulations and standards continue to evolve, he also is a proponent of educating engineers about the current rules. In the early 1960s he initiated a lecture series that has become a staple of AISC's work and continues today with "Advances in Structural Steel Design" seminars. "There are a lot of things engineers don't get in college. AISC is in a position to educate them so they can design in steel better," said Disque, who spent a year as an associate professor of civil engineering at the University of Maine.

Disque's latest contribution to the structural steel industry is a textbook, "Load and Resistance Factor Design of Steel Structures" (Prentice Hall), that helps both students and practicing professionals switch over the LRFD. "It's a much more logical way of looking at loads," Disque said. "And in some cases, there is significant savings because the old way of doing it was so clumsy that it over-designed way beyond the point of reasonable safety."

THAT'S JUST PLAIN WRONG

A stickler for accuracy, detail and thoroughness, Disque's temper often flares when he encounters shoddy workmanship. "When you show Bob a bad detail or a lousy set of detail drawings, it's like a firecracker going off," said Barger. "He'll say, 'What are they teaching these people?' or 'Where's this guy been?' One of his favorite statements is: 'That's just plain wrong'—followed by about 20 exclamation points. Bob is so intelligent but he can't imagine that others can't keep up with him."

Disque also is a passionate debater and will initiate professional arguments given the slightest opportunity, said friends and former colleagues. Horatio Allison, a well known engineering consultant now retired and a close Disque friend, said he enjoys debating Disque. "We get in arguments, and I'll take the adversarial viewpoint," Allison said.



Simple shear connections, which were commonly used more than six decades ago, take the form shown above in the latest AISC Manual of Steel Construction.

"But he's outstanding. He has a wonderful grasp of knowledge for the design of steel structures."

Disque's latest venture into controversy is his criticism of what he sees as the dependency of design firms on computers. He also is concerned that the technology needed to advance the newest approach to connections—Partially Restrained Moment Connections—is not yet practically viable.

As a consultant for the last four years with Besier Gible Norden, Consulting Engineers Inc., in Old Saybrook, CT, Disque serves as an expert witness in litigation, consults on production design work and conducts mandated peer reviews of designs by other engineering firms. "I've been around so long that it's rather easy for me in looking over drawings to spot something that looks strange or bad. I've caught undersized beams that were computer-designed. The computer assumed this particular beam was braced, and it wasn't. Now, they might have caught that during construction. They would have put the beam up and before it was loaded, they would have seen it was flexible and too light. The original designer could have been in big trouble."

CAUTIOUS ABOUT COMPUTERS

Disque is concerned that the computer, while an essential tool in design and construction, can create errors that manual calculations might have avoided. "Computers take the number-crunching out, but when you sit down to frame a building, you should do that before you engage a computer. Only after you do that basic framing do you put everything into the computer to see whether it will work or not," he said.

"Computers have improved things," he acceded. "I remember in the 1950s I was working for a consulting engineering firm and was doing some calculations that I worked on for about six months, routine calculations to see what the best way of doing this was. That can be done in a matter of minutes now. And you can get something better. But computers also can get you into some dangerous situations."

Design engineer Jim Wooten, a good friend of Disque's from Little Rock, AR, came up with a "law" and two corollaries that Disque likes to apply to computerization: Wooten's Third Law: The

acquisition of uncommon knowledge inhibits the application of common sense. "When you get so smart with all your mathematics and models, you forget your common sense. The corollaries are: 'Steel is smarter than the engineers who design it' and 'the computer renders obsolete the necessity of rationalizing and simplifying problems or even of understanding them.' But I don't think that the second corollary has to be. You can use judgment with a computer."

Disque's concerns about computer dependency reflect on his feelings about Partially Restrained connections. With PR connections, the beam and girder connections are assumed to possess a dependable and known moment capacity that is not as rigid as Fully Restrained connections but are not as flexible as Simple Shear connections. The trick is knowing where the ideal point between rigidity and flexibility lies—and that's where the computer comes into play.

While Disque has his doubts about the practical application of PR connections today, his friend and former colleague Robert Lorenz, director of education at AISC, has made convincing arguments otherwise. "Lorenz says that PR connections are a lot closer to reality that I would. It takes a very, very sophisticated computer program." However, Disque does concede that PR connections are the wave of the future—it's just a matter of when technology will catch up with theory.

Another point on which he is adamant is the relationship between fabricators, engineers and architects. "Fabricators are very savvy about a lot of things. Even though they may or may not have an engineer on their staffs, they have saved an awful lot of buildings from disaster because of engineers making mistakes," Disque said. "Fabricators and structural engineers have a lot in common. They are allies, but they often get into confrontations. I listen to fabricators. I think they know what they're doing. Engineers who don't listen to fabricators are doing so at their own risk."

Katie Brown is a freelance writer based in Evanston, IL.



CONTROLLING DISASTERS

A new
Emergency
Services facility
is designed
to remain
operational
despite any
disaster it may
experience

By William A. Andrews, S.E.

CIVIL EMERGENCIES PLACE EXTRAORDINARY DEMANDS ON LOCAL GOVERNMENTS to manage and direct the agencies that respond to such events. Timely and appropriate actions in response to disasters such as earthquakes, conflagrations, floods, tornados, air crashes and hazardous materials accidents save lives, protect property and accelerate the recovery process. Clearly, the requirements of government services during such emergencies differ significantly from their daily operations. Emergency response calls for close coordination of government officials, support staff, and response teams through direct lines of survivable communication. Detailed information must be quickly gathered and disseminated to the appropriate decision-making officials, who then mobilize and direct available

assets to meet critical needs. A new generation of building types called Emergency Operations Centers (EOC) is being developed and built to provide centralized coordination and direction of local and regional emergency response and recovery.

In the San Francisco Bay Area, Alameda County learned firsthand about the complexities of emergency response management through two recent natural disasters, the 1989 Loma Prieta earthquake and the 1991 East Bay Hills firestorm. With the recent completion of the Alameda County Office of Emergency Services/Emergency Operations Center (OES/EOC), the county is now in a far better position to prepare for and respond to such emergencies. The facility provides state-of-the-art audio/visual communications and data sharing technology to

county personnel experienced in disaster management. The project cost, including all the high-tech systems, is \$6.5 million.

The design team, led by Michael Ross-Charles Drulis Architects, Sonoma, CA, with structural engineering provided by DASSE Design, Inc., San Francisco, selected a structural steel frame because of space planning flexibility, opportunities to feature exposed framing in the architecture, speed of erection and proven earthquake performance.

BUILDING FUNCTIONS

The county Sheriff is the Director of Emergency Services, the lead decision maker in the county's emergency management organization and provides direction and control of post-disaster operations. The facility has three primary functions:

- The Office of Emergency Services (OES) provides for daily operations with direct access to the EOC via restricted circulation. The OES is responsible for coordinating the emergency management program (preparedness, response, recovery and mitigation), coordinates the operation of the EOC, maintains liaison with other local and state government agencies, and directs deployment of the Sheriff's volunteer services, such as Search and Rescue.

- The EOC is a dedicated area for use as an incident command center during emergency operations. It consists of a Situation Room for data entry and retrieval and monitoring, encircled by focus rooms for specific operations and logistics, conference rooms, and a Situation Analysis Room. In the event of a disaster, communications are linked with decentralized emergency sites such as staging areas, hospitals, shelters and other governments agency command posts.

- The Sheriff's Multi-Purpose Room serves as the staging area for emergency workers, a disaster application center, a regional



A steel frame was selected for the Alameda County Office of Emergency Services / Emergency Operations Center because of space planning flexibility, opportunities to feature exposed framing in the architecture, speed of erection and proven earthquake performance

LOADS OF INFORMATION.

Get the new, 60-Year Steel Joist Manual — a must for building renovation.



ALL NEW!

Whether you're an architect, engineer or contractor, this all-new, 318-page, 60-year Manual has everything you need to determine load capacities in existing joist-supported structures built from 1928 through 1988. Inside you'll find:

- the original "K" series specifications and load tables
- joist girder specifications and weight tables
- the complete expanded "H" series load tables
- suggested investigative procedures and time-saving data for use when analyzing existing structures
- a complete listing of commonly used live and dead loads throughout this period of time

Don't wait a moment longer. Fill out this coupon and send for your manual today! Just \$59.00, including postage and handling (\$69.00 outside U.S.).

Also available— 40th Edition Specs and Load Tables for Steel Joists and Girders



Includes Metric and Standard units

Send me new 60-year Steel Joist Manual(s) at \$59.00/per.

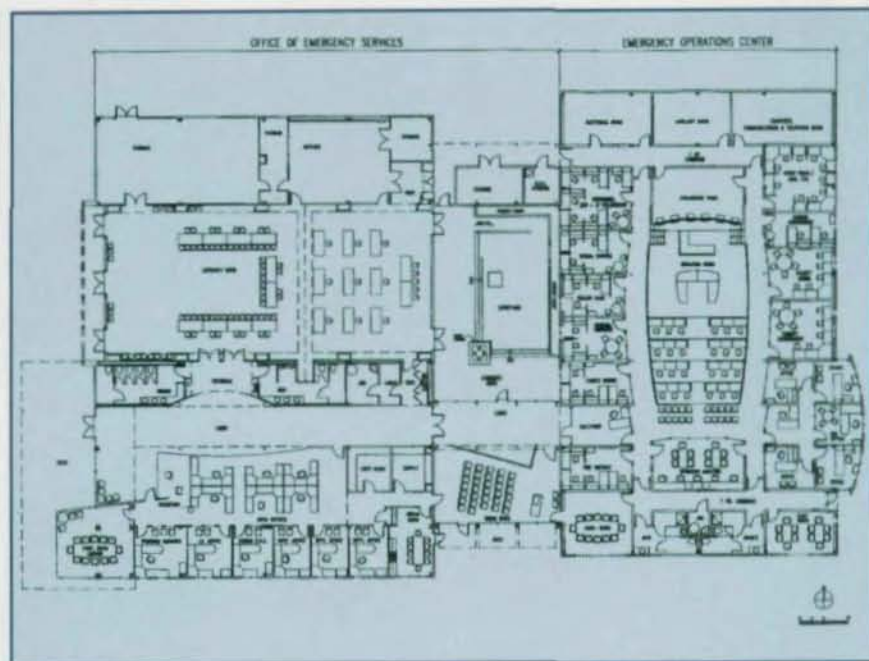
Send me new SJI Catalogue(s) at \$20.00/per.

Total enclosed _____
Payment includes first class postage and handling and must accompany order.

Name _____
Title _____
Company Name _____
Address _____
City _____
State _____ Zip _____



Mail to: Managing Director
Steel Joist Institute
Div. A-1
1205 48th Avenue North
Myrtle Beach, SC 29577



disaster response planning conference center and an assembly area for public functions.

The facility is designed for optimum flexibility and adaptability, both now and in the foreseeable future. It accommodates present and future space needs and the audio/visual and communication requirements of the OES and the EOC. The building is wired throughout for telephone, data, public address, radio and television to provide for internal communications and access to the Local Area Network (LAN) computer system, and links via phone, line radio and satellite to other facilities, field command posts and outside information services. The LAN system also utilizes a geographic information system for mapping and monitoring disasters and directing the response effort. The Situation Room has the ability to place data on any of three large projection screens and six monitors in a theater setting. An emergency power system provides uninterruptable power to all vital computer, security and communications systems. Electrical, mechanical and audio/visual equipment are seismically braced to the structure for the same seismic ground acceleration used in the building

frame design, to ensure that critical building systems remain intact and operational for post-earthquake/disaster functions.

BUILDING DESCRIPTION

The facility is a 25,600 SF, type II-NR single story steel framed structure. Column bays vary from 12 feet to 24 feet. The roof construction is a standard built-up roof over 1½" x 18 gage metal deck supported by W12 beams and W16 girders. The long span roof over the multi-purpose room is framed with prefabricated steel open web joists and joist girders. General contractor was Nibbi Brothers of San Francisco. Steel joists were fabricated and erected by AISC-associate-member Vulcraft. The foundation consists of 24 inch diameter drilled piers and interconnecting grade beams. The building exterior cladding is a combination of GFRC (glass fiber reinforced concrete) panels, precast concrete panels and aluminum composite panels.

After considering the unique functions and distinct post-earthquake operability criteria of the OES and EOC spaces, the design team decided to structurally separate the OES and EOC. Adding the building separation provided the opportunity

to employ a higher seismic performance criteria for the EOC frame and bracing of critical systems in a rational manner that was also economical. The EOC lateral force resisting system is a steel eccentric braced frame, selected for its combination of stiffness (drift control) and good ductility. Drift control was especially important to provide protection for the communications systems critical to post-earthquake operations. The braced frame members are W12 link beams, W8 columns and TS8x8 braces. In the OES structure, where maximum space planning flexibility was required, the lateral force resisting system is a steel moment frame. Moment frame girders are W18 sections and columns are W10 and W12 sections.

Frame analysis was accomplished with RISA-2D and the member calculations were done by hand.

EXPOSED STRUCTURAL STEEL

The structural steel frame is exposed at specific locations inside and outside the building as an integrated element of the architecture. The structure was exposed to emphasize its function in load bearing and seismic restraint, and as an armature for the architecture. The contract documents designated these members as "Architecturally Exposed Structural Steel" (AESS), as defined in section 10 of the *AISC Code of Standard Practice for Steel Buildings*, in order to apply the more rigid fabrication and erection tolerances. These tolerances were critical in the lobby, where wall finishes were detailed to recess just behind the WF column flanges. Exposed beam-column connections in the lobby are all-welded, single shear tab connections with exposed welds ground smooth. Erection holes in the beam webs and shear tabs were filled and ground smooth for a uniform appearance. Perhaps the most dramatic architectural use of AESS occurs over the

CALL TODAY FOR YOUR FREE DEMO KIT!

STRUCTURAL MATERIAL MANAGER 5.0

SMM 5.0 gives fabricators and detailers the fastest, most accurate material list manager available. No more time-consuming manual calculations! The software's speed and efficiency delivers an easy-to-use system that's second to none. Call today for a FREE, no-obligation demo disk with all modules and the complete system's user's guide.

Let SMM 5.0 turn your next material list into hands-off experience!



- Main Module computes weights, surface areas, bolt counts & lineal totals
- Length-Nesting module produces optimal cut lists from in-house stock, vendor stock or the best combination of both
- Plate-Nesting Module draws the best layout for cutting plates from stock sheets
- Estimating Module tallies material costs, shop hours & field hours
- Production-Control Module prints shipping lists, loading tickets & job status reports

E.J.E. INDUSTRIES, INC.

287 Dewey Avenue, Washington, PA 15301

1-800-321-3955 or 412-228-8841



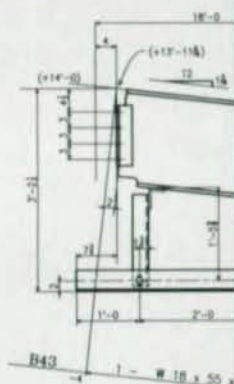
Please circle # 46

STEEL DETAILING

with AutoCAD®

If your present CAD system doesn't detail everything you fabricate, then you should look at one that does.

- Beams • Columns • Plans • Elevations
- Stairs • Trusses • Hand Rail • Spandrel Angles
- Caged Ladders • Ship ladders • Piperacks
- Sloping Beams • Curved Beams • Frames
- Gusset Plates • Bracing • Templates
- and any other drawings that you might need to fabricate Structural Steel or Miscellaneous metal.



Sheet Format, Bill of Material format, detailing and text styles can be modified by the user.

Programs for cutting lists, inventory control, Linear nesting (Mulling) and non-symmetrical bracing.

Call Today!

For free information about the detailing software that is the most cost effective and easiest to use.

COMPUTER DETAILING CORPORATION

A Service Company for Steel Fabricators and Detailers

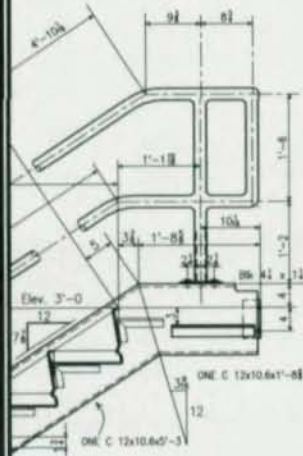
80 Second Street Pike - Suite 10

Southampton, PA 18966

215-355-6003

Fax 215-355-6210

eMail: 70655.1300@compuserve.com





building entry, where W18 beams cantilever 20 ft. out from the building frame. The beams are fabricated with tapered ends

and matching circular perforations. Intense coordination between the architect and structural engineer was required for

the exposed steel members, connections, dimensions and finishes during production of the construction documents to achieve the desired architectural expressions while maintaining structural integrity and constructability.

SEISMIC DESIGN CRITERIA

The building design was governed by the 1991 Uniform Building Code. Seismic design of essential service facilities, such as an Emergency Operations Center, using the code minimum provisions requires the use of an importance factor which increases the code minimum design base shear by 25% over standard buildings. During schematics, the owner and design team determined that in addition to the code minimum seismic requirements, the special building functions and proximity of the site to major earthquake faults merited a site specific seis-

"Solve Your Next Problem in Minutes!"

Call for
FREE Demo

NEW Versions Available

**Integrated
Engineering
Software**

Affordable, high quality software for structural engineers. Real Windows® applications save you time, even for small jobs. **VisualAnalysis™** for graphical, unlimited 3D FEA. **AnalysisGroup™** for tools not found elsewhere: shear walls, circular tanks & more! Please call or fax for information.

8840 Chapman Road, Bozeman, MT 59715
(406) 586-8988 Fax: (406) 586-9151

1-800-707-0816

For the **BEST** in Bridge Software...

DESCUS-PLUS

Design of Curved Girder Bridges

NEW FEATURES:

- Live Load Distribution - Automatic (Longitudinal & Transverse)
- Mesh Generation - Automatic
- Rating - Auto Rating Factors
- Influence Line Output (From Influence Surfaces)
- Metric Conversion
- Uses AASHTO 15th Edition
- Lease or License
- Timesharing

**Free Trial...
FULL Program!**

MERLIN DASH

Design & Analysis of
Steel Girder Bridges

- AASHTO - Uses New 15th Ed.
- FHWA - Endorsed and Used by
- DOT's - Used by 35 States
- Design - Cost Optimized
- Friendly - Menu-Driven Input
- Graphics Display of Output
- Output Report Selection
- Quality and Performance

TRAP

Truss Rating and
Analysis Program

- Continuous to 6-spans
- Prestressed Trusses
- Cable Members
- Design & Rehab.
- AASHTO and LL Vehicles to 20 Axles
- Auto. computation Inv. Operating & Posting Load

Available Exclusively Thru:

OPTI-MATE, INC.

P.O. Box 9097, Dept A, Bethlehem, PA 18018
(610) 867-4077

Please circle # 87

Please circle # 53

01197

mic hazard study. Using site specific ground motions improves the reliability of predicting structural response and the designed level of performance. The use of unreduced design spectra allowed estimations of actual building displacements, strain levels, and discrete determination of yielding mechanisms, thereby providing valuable design information for both structural and nonstructural system components. The results of these additional analyses provided the basis for establishing performance guidelines for critical building contents. Site specific response spectra were developed by geotechnical consultants for ground motions with a 2% and 10% probability of being exceeded in 50 years. These are often referred to as the "maximum credible" and "maximum probable" earthquakes. Six known faults with characteristic earthquake magnitude greater

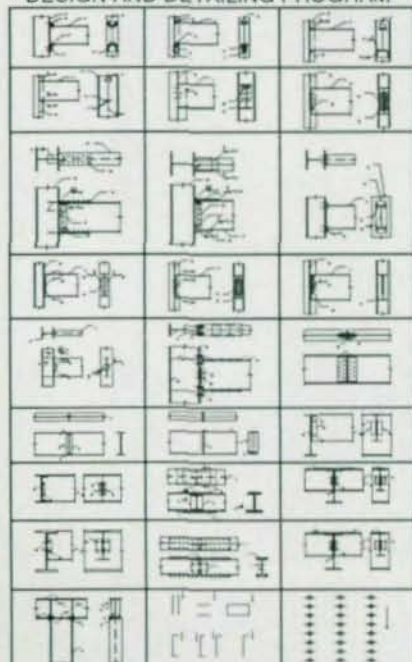


than 6.0 lie within an 11 mile radius of the site, the closest being 1 1/4 miles away. The response spectra also account for unknown potential sources of strong ground shaking emanating from concealed thrust system

earthquakes, which is known as "background seismicity". (Background seismicity is considered a possible source of the high ground accelerations recorded in the Los Angeles area during the 1994 Northridge

DESCON

STEEL CONNECTIONS
DESIGN AND DETAILING PROGRAM



For a Free Demo Disk Call or Write
OMNITECH ASSOCIATES

P. O. Box 7581
Berkeley, CA 94707-0581
(510) 658-8328

Curved & Straight Steel Bridge Design English & Metric

Integrated Girder and Bracing Design

Complex grid and roadway geometries, I girders, box girders, rolled shapes
Influence surface (grid) or influence line approach (grid or line girder)
Powerful nonprismatic girder optimization processing (curved and straight)
1992 AASHTO SPEC, 1994 Interims, 1993 CURVED GIRDER GUIDE SPEC

Demos and 30-day trials available

MDX software

Phone (314) 446-3221
Fax (314) 446-3278

Please circle # 52

Please circle # 47

Announcing the...

1996 National Steel Construction Conference

March 27-29, 1996 Phoenix, Arizona



Where the Steel Team Meets...

An expanded educational program — six tracks dedicated to management, technology, engineering and fabrication issues — round out three information-filled days of learning.

• Tracks •

NEW! Computer Track

- ❖ Electronic information exchange for project design and status
- ❖ Standards for information sharing
- ❖ E-mail and the fabricator along with LRFD on CDROM
- ❖ Common software packages (MathCAD and more)

NEW! Erection Track

- ❖ Procedures to make the job site safer
- ❖ Connections causing severe erector problems
- ❖ Steel Erection Guide highlights
- ❖ Erection cost basis

Fabrication Track

- ❖ Safety programs
- ❖ Welding code reorganization, qualifications and equipment
- ❖ Fire protection and coatings
- ❖ Architectural fabrication
- ❖ Press brakes — dies and forming, punches, drills, and more

Construction Management Track

- ❖ Process industry practices
- ❖ Cost/Trust relationship
- ❖ Schedule compression
- ❖ Material management

Engineering Management Track

- ❖ Effective specification, contract documents, general notes, and more
- ❖ Selection of bolted joint criteria
- ❖ Review of fabricator submittals
- ❖ Communication of LRFD load information to the fabricator

Engineering Technical Track

- ❖ Learning from Northridge
- ❖ Specifying steel joists and joist girders
- ❖ Designing with Steel Deck
- ❖ Composite design issues
- ❖ Metal stairs and railings
- ❖ Industrial building design
- ❖ Wind requirements for low rise buildings
- ❖ Design office challenges

Expand your knowledge . . . network with steel construction industry professionals from around the world . . . view the latest products and services for the industry in an expanded expo area . . . it's all a part of the 1996 National Steel Construction Conference, March 27-29, at the Phoenix Convention Center, Phoenix, Arizona.

❖ ❖ ❖

If there's one industry gathering you're sure to attend, make it the 1996 National Steel Construction Conference, March 27-29, at the Phoenix Convention Center, Phoenix, Arizona. **Where the Steel Team Meets!**

For more information, complete the coupon below and FAX or mail it to:

American Institute of Steel Construction
1 East Wacker Dr., Ste. 3100
Chicago, IL 60601-2001

FAX: 312/670-5403

Mark your calendar now to attend the leading steel construction conference of the year.

YES! I want to attend the 1996 National Steel Construction Conference. Send me registration information.

Name _____

Company _____

Title _____

Address (No P.O. Box please) _____

City/State/ZIP _____

Phone/FAX _____

MSCS



Setting Standards for Over 70 Years
Please circle # 4



earthquake.) The site ground motion analysis yielded peak horizontal ground accelerations of 1.0g, two and one-half times greater than the UBC minimum seismic base shear coefficient computed for seismic zone 4.

The owner and design team decided on a seismic performance criteria for the eccentric braced frame of the EOC to respond elastically when subjected to a peak ground acceleration of 1.0g. The moment frame of the OES structure was designed to survive without collapse for 1.0g acceleration while permitting some excursion into the post-yield range. The LRFD provisions of AISC's Seismic Provisions for Structural Steel Buildings were used in the analysis and design of the moment frame and eccentric braced frame for the maximum load conditions. The intended yield mechanism of eccentric braced frames is to achieve shear yielding in the link beams, while the braces and columns resist the forces corresponding to the link shear yield limit state. An accurate assessment of the real yield strength of the link beams is critical to achieving this intended behavior. It is now common knowledge in the steel industry and structural engineering community that ASTM A36 steel has an average yield

stress in the range of 45 ksi to 50 ksi. In order to confirm the link beam yield strengths, mill certificates for the link beams were submitted to DASSE early in construction for review and comparison with the material strength conservatively assumed in design.

NORTHRIDGE EARTHQUAKE REPERCUSSIONS

As the general contractor was gearing up for construction, the early reports of poor steel moment frame performance in the 1994 Northridge earthquake became available. DASSE relied on field reports and interim recommendations from AISC, AWS and the Structural Engineers Association of California (SEAOC) to evaluate both the welding procedures specified on the project and the reliability of the welded beam-column moment connection. Welding quality control features, such as use of written welding procedures, use of proper electrodes, compliance with AWS D1.1 Structural Welding Code for joint fit-up, preheat and rate of weld metal deposition, and the removal of weld backing plates at the complete penetration weld of the beam flange to column flange were strictly enforced. This is in contrast with the pre-Northridge standard of practice

in the industry. As a means of additional quality control, AWS qualification tests were administered on the site to welders performing complete penetration welds on the moment frame. All complete penetration (CP) welds were visually inspected and ultrasonically tested. Defective welds, which represented less than 10% of the total CP welds on the job, were backgouged and rewelded. After publication of AISC's *Northridge Technical Bulletin No. 2* in October 1994, DASSE contacted the county and recommended a review of the OES moment frame connections for the anticipated rotational demands at the beam-column joints. At that stage, construction had progressed to installation of interior partitions, mechanical, electrical and plumbing work, so a quick response and implementation strategy was necessary to mitigate unnecessary costs and disruption of any proposed connection strengthening. The beam-column joint rotation demands were studied and compared with the results of recently completed full scale tests at the University of Texas-Austin by Michael Englehardt. At beam-column locations where anticipated joint rotations exceeded the minimum rotations achieved in Englehardt's tests, beam flange cover plates were proposed in accordance with the AISC recommendations. With the county's agreement, 22 connections were strengthened, at a cost of approximately \$1,100 per connection, including removal and replacement of interfering nonstructural features. The project was completed in about 15 months, three months ahead of schedule and within budget.

William A. Andrews, S.E., is a project engineer with DASSE Design, Inc., a consulting structural engineering firm based in San Francisco.

You do the thinking . . . SteelModeler does the rest.

At last! A truly interactive modeling system designed for structural steel detailers.

SteelModeler is efficient, accurate, and highly productive.

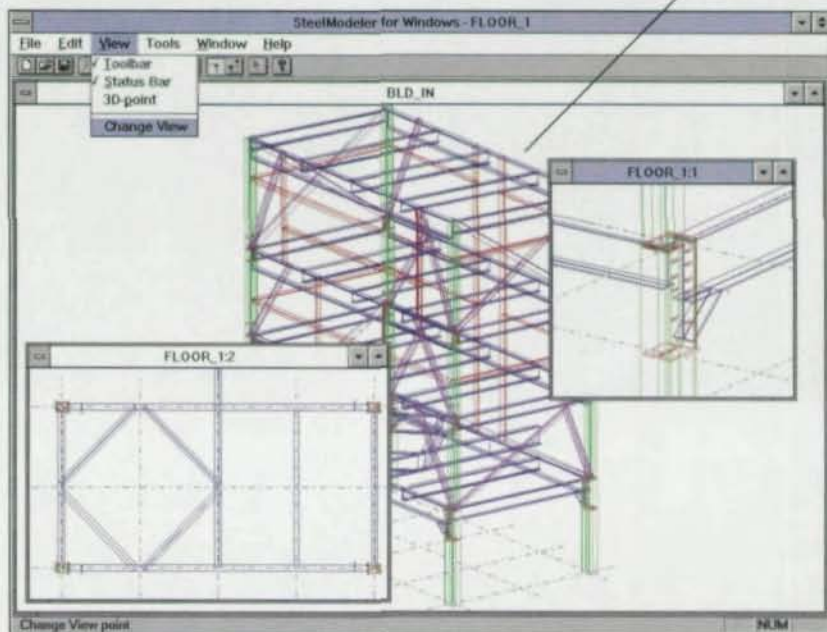
SteelModeler lets you concentrate on producing a single 3D model, while it takes care of everything else.

You define your structure by selecting steel shapes from a comprehensive built-in data base and make connections using your own custom library of macros. And as you work, **SteelModeler ensures that all components fit.**

There's no need to juggle drawings of plans, sections or components. SteelModeler automatically generates any view you want on the multi-window screen, and whenever you're ready, drawings, shop details and materials lists for the whole model or any section or part you require – all in a form customized by you to your specific standards.

Revisions or modifications? Simple. You change the model, and SteelModeler automatically revises all related drawings and lists to ensure total accuracy.

You create a single model.



SteelModeler automatically generates the views, shop drawings and material lists you require.

- Shop drawings
- Anchor bolt setting plans
- Erection diagrams
- Floor/roof framing plans
- Connection details
- Perspectives
- Bills of materials
- Neutral file import/export

SteelModeler

The tool you would have designed for yourself.

SteelModeler runs on standard PCs and Unix workstations. Versions available: MS-DOS; OS/2; Autocad; Windows 95 (summer)
For more information, contact: dcCAD; Tel: (416) 253-4848; Fax: (416) 253-4315; Toll-free: 1-800-776-4840

Please circle # 107

All trademarks are property of the respective owners.



SIMPLE STRUCTURE YIELDS SOPHISTICATED ARCHITECTURE

The designers of a new high-tech lab were able to cost-effectively develop a complex architectural solution by concentrating first on the building's basic design requirements

By Kevin A. Yoder

INTEGRATING A NEW, 60,000-SQUARE-FOOT NATIONAL TESTING LABORATORY FOR THE AMERICAN RED CROSS into a historic neighborhood in downtown Detroit, MI, required creative design solutions from architects and engineers at the Philadelphia-based architectural, engineering, interior design and planning firm of Ewing Cole Cherry Brott.

The design team was charged with designing the highly sophisticated facility under a conservative budget. In addition, because of its location in an historic section of the inner city, the building had to respect and respond to its surrounding environment while providing for sophisticated environmental and programmatic requirements. The American

Red Cross and the design team worked with community groups and local Red Cross officials to develop a design respectful of the historic area. The result is a prime example of how a simple, efficient structure forms the basis for high quality architectural character on the outside and high-tech capabilities on the inside.

The laboratory, part of the American Red Cross' program to consolidate its blood testing facilities nationwide, is based on a prototype designed by Ewing Cole Cherry Brotts' research and development facilities planning subsidiary, Ewing Cole Brouwer. Ewing Cole Brouwer developed the prototype for this and eight other national blood testing laboratories throughout the country.

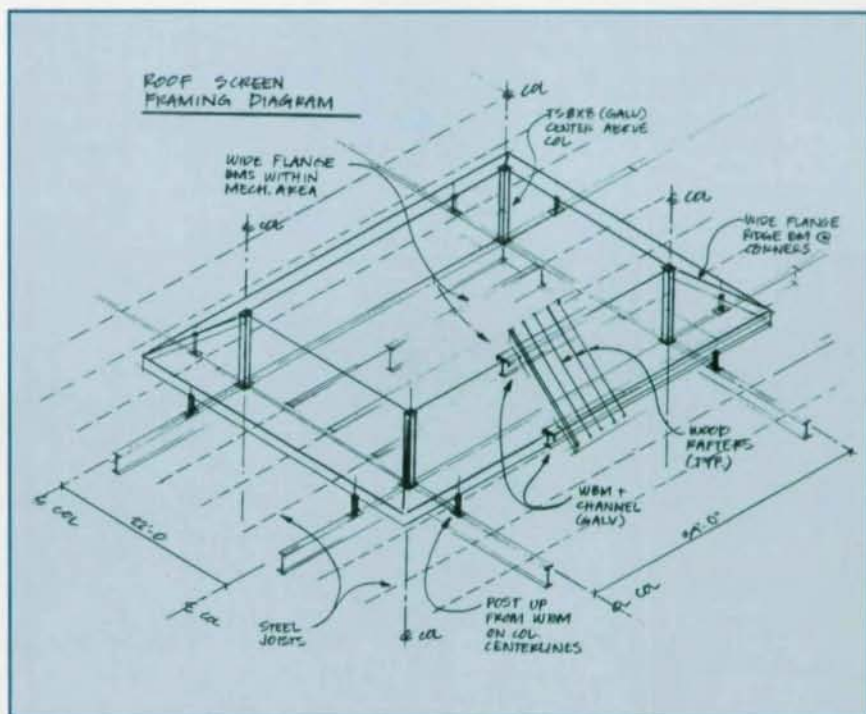
ARCHITECTURALLY INTEGRATING THE FACILITY

The two-story Detroit facility is located in the Brush Park Historic District on the site of the existing Southeast Michigan Red Cross facility. The steel-framed, masonry-clad building stands next to the Prismatic Club which exemplifies the architecture of the district.

The new building takes its visual cues from the Prismatic Club and other Victorian homes and buildings in the neighborhood. Decorative gable roof forms and pediments soften the building mass. Colored brick patterns, cast-stone trim, shingled pitched roofs, dormers, brick arches and traditionally scaled windows provide an historical presence.

Inside, the first floor features two separate main entrances — one for administrative and laboratory staff, the other for blood samples. The remainder of the floor houses a state-of-the-art, highly efficient blood testing and processing facility where all blood testing operations are performed. This laboratory is capable of testing more than 1.2 million samples a year.

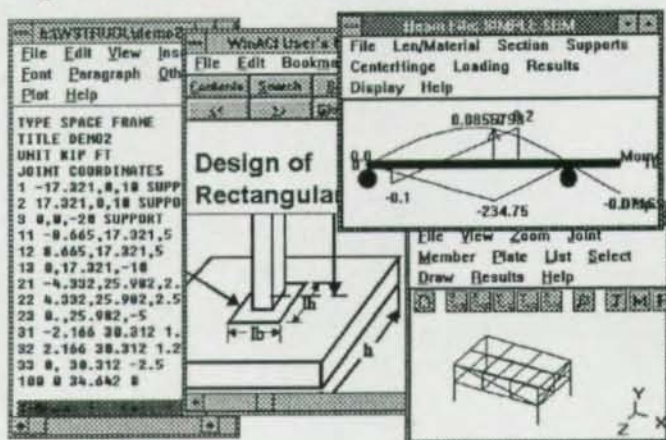
Because of frequent high-tech equipment advances and



While high-tech inside, the exterior of the new Red Cross facility reflects architecture of the neighboring historic district.

WinSTRU DL

The Only 32 bit Structural Engineering Program written in C/C++ and 100% Windows



Includes 12 Windows Programs

WMaster, WSTRU DL, WinASD, WinACI, WinLRFD, WEdit, WinPost, WinPlot, WinBeam, WinTool, WFrame, and WSeiSabl

Ask for a Free Demo Today!

Computer Aided Structural Technology
POBox 14676, Fremont, CA 94539-4676 Tel (510) 226 8857 Fax 226 7328

Please circle # 27

Designing Steel Studs?... Questions?...
... Answers!

C-STUD ANALYZER II

Metal Stud Systems introduces **C-STUD ANALYZER II™** for Windows, a design aid that eliminates the time consuming task of AISI Specification review and dependence on manufacturer's literature.

Two programs in one. Use your existing analysis software to determine member forces or use the integrated beam analysis program.

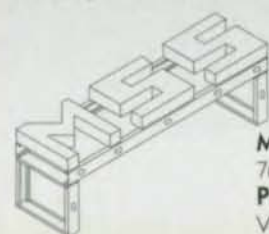
Input Beam Parameters

- Up to 6 uniformly loaded spans & overhangs, 8 point loads, applied axial load, bridging spacing & deflection limits

Input Framing Parameters

- Select from a "Generic" data base of stud profiles that reflects the majority of sections available today. Components are defined by depth, flange width, steel thickness & yield, punched or unpunched web, single, boxed or "I" shaped configurations

C-STUD ANALYZER II™ verifies or disproves the framing selection in accordance with the 1986 edition of the AISI Specification for the Design of Cold Formed Steel Structural Members, with 1989 addendum.



Add 5% sales tax for Maryland orders.
Call or write for details.

Metal Stud Systems, Inc.
76 Cranbrook Road—Suite 184, Cockeysville, MD 21030
Phone (800) 683-3235 • (410) 683-1407
VISA / MC & AMEX Accepted

Please circle # 25

changes in regulations, the flexibility of casework, mechanical and plumbing systems was of prime concern. Lab modules were designed to allow all bench-top equipment to be easily reconfigured. All lab bays were constructed with the same casework components and are completely interchangeable, allowing for change by simply adding or subtracting components from the laboratory furniture system.

Utilities are in place at each module to accommodate a wide variety of testing equipment.

The second floor houses administrative offices, classrooms, computer rooms, locker rooms, a large break room and other support areas — as well as offices for other regional and national American National Red Cross divisions including Regional Blood Information Systems, quality assurance and the senior principal officer.

The basement accommodates mechanical systems, storage areas and expansion space.

EARLY PLANNING

At the onset of the project, it was decided that the building had to be a simple rectangular shape to accommodate budgetary restrictions and the fast-track construction method being employed to meet the project schedule. An early structural bid package was completed prior to the final design, and construction began during the termination of the design phase. The construction management firm, Detroit-based George W. Auch Company, joined the team during the planning phase to facilitate development of the most efficient design solution. Professionals from the construction management company attended numerous design development meetings to help establish the design criteria and building systems at the onset to assure cost requirements could be met.

To meet the project schedule and budget, the majority of the structure had to be quickly and

efficiently designed in the early phase of design. Structural steel was the logical choice for numerous reasons. Typical bays of steel were expediently evaluated to determine the most efficient bay size for the standard lab module. Steel would allow for speedy erection and easy modification if required during the fast-track design. A braced-frame system was chosen for its efficiency as well as its cost and time-saving contribution in both the design and construction phases. Lastly, it was decided that the placement of rooftop equipment would be limited to specific bays on the roof that would be designed further along in the design process.

It was also necessary to establish the exterior building envelope and its support structure early on. Brick was the preferred exterior finish in keeping with the vocabulary of other neighborhood buildings. "Punched" window openings were chosen for their residential scale. Brick with concrete masonry backup was desirable for its durability. Also, the use of standard precast masonry and loose steel lintels within the exterior masonry eliminated the need for the continuous hanging steel support system required for a strip window system. The typical window opening was based on a maximum practical lintel size. The brick shelf (relieving) angle was located within the depth of the spandrel beams to minimize the amount of additional steel support required.

DEFINING THE STRUCTURAL SYSTEMS

The structure's foundation system consists of concrete spread footings for the reinforced concrete basement walls and steel columns. The mechanical room is located in the basement so the weight of the equipment can be supported on the basement slab on grade. Large areaways with louvered wall panels were created in the basement walls to accommodate the



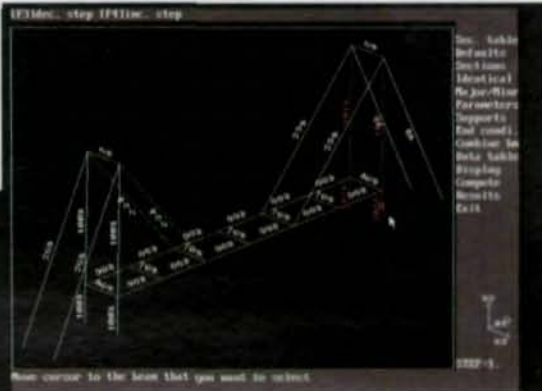
Take it out of the box and create an error-free model

STRAP (STRuctural Analysis Programs)™ is FEM software that speaks the visual language of structural engineering. Easy

graphical tools let you rapidly model your most complex steel or concrete structures and apply loads without ever typing a single command. After static or dynamic analysis, click on any part of your structure to change design parameters interactively.

There's no need to anticipate all design variables at input or to reanalyze your model again & again.

- View analysis data for any beam
- Change grade of steel, unbraced length, etc.
- See results instantly
- Display and print detailed calculations for selected beams.



Designed by structural engineers
 Technical support by engineers who use the software
 DOS® and Windows™ versions
 All trademarks acknowledged

Use actual software, personalized with your company name, for 30 days before buying. Install in 5 minutes, produce real work in less than an hour

ATIR Engineering Software
 Needham, MA

800-644-6441

Please circle # 28

RAMSTEEL Asks: "How Much Time Do You Spend On These Tasks?"

See how RAMSTEEL can help you do this work in a fraction of the time!

- ▲ Computing tributary loads, computing live load reductions and tracking the reaction of one member to the next.
- ▲ Designing beams, girders, bar joists, joist girders, columns and base plates.
- ▲ Preparing calculations and creating framing plans.

30-DAY TRIAL AVAILABLE



INTEGRATED ANALYSIS, DESIGN AND DRAFTING OF STEEL BUILDINGS

Ram Analysis
 5315 Avenida Encinas,
 Suite M, Carlsbad, CA 92008
 Tel 800-726-7789
 Fax 619-431-5214

Please circle # 41



air intake and relief of the air handling units located there. This also affords convenient access in the future when equipment is added or removed.

Columns are W10 shapes. W18 and W24 beams and W24 girders span 22-ft. on the first floor and second floor framing consists of W16 and W21 beams.

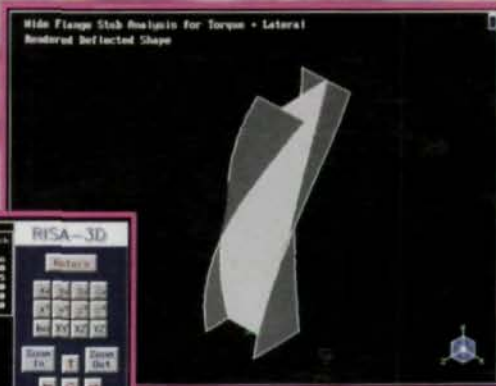
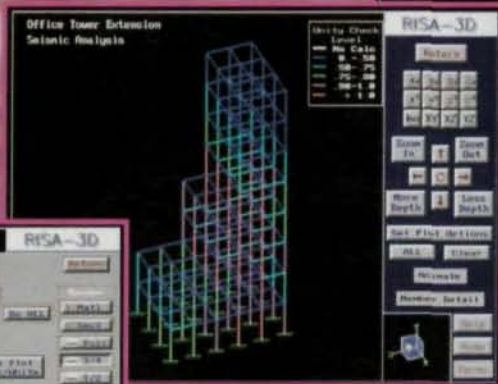
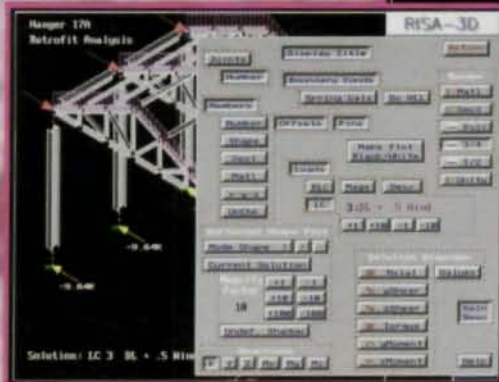
A steel joist floor structure was considered but eliminated because of the vibration-sensitive laboratory and computer equipment used in the facility. At the second-floor level, 2½-in.-lightweight concrete slab on a 2-in. galvanized composite metal deck from Bowman Metal Deck was employed. This system efficiently accommodates the office functions of this floor. The first-floor slab consists of a 4½-in. normal weight concrete slab on a 2-in. metal deck. This thicker, heavier slab was chosen because of the laboratory functions located on this floor. The increased mass of the slab serves to dampen any floor vibrations that may affect the sensitive laboratory equipment.

A column spacing of 22 feet was utilized in the longitudinal direction of the building; this was derived from the width of the lab module. Across the short direction of the building, the

RISA-3D *Setting the Standard*

Is *value* important to you when selecting structural software?

If so, you'll want to know that **RISA-3D** scored a **10** out of **10** rating for cost vs. benefit in the October '94 issue of *Structural Engineering Forum* magazine.



The best software isn't always the most expensive software!

RISA-3D is setting a new standard for quality vs. cost. Try our demo and see for yourself just how good structural design software can be!

Call or Fax us for a Free Demo

RISA
TECHNOLOGIES

26212 Dimension Dr. Suite 200
Lake Forest, CA 92630
Voice: 800-332-7472
FAX: 714-951-5848

Please circle # 40

three bays of 26-34-26 feet were coordinated with the lab module and casework.

At the roof level, K-series steel joists provided by AISC-associate member Canam Steel Corporation were selected for the majority of the framing members because of their economy. All beams and girders on the column lines are structural steel wide flange members to ensure the rigidity of the steel frame. Rooftop equipment was concentrated into designated bays at each end of the building. Steel wide flange beams in lieu of steel joists were required to support the loads of the air-cooled chillers. These bays received roof screens to hide the equipment; these screens were designed later in the process.

The locations of the braced frames within the structure required early coordination of the space planning and structural requirements. In the short

direction of the building, one brace frame was located at each end adjacent to the stairs. To accommodate exit doors in the stair towers, a V-braced frame allowing for a door opening was used. In the other direction, one X-braced frame was located near the center of each longitudinal elevation.

Horizontal wind and seismic forces are transferred through the floor and roof diaphragms at each level to the braced frame. The bracing members consist of structural steel tube shapes connected to the wide flange beams and columns with steel gusset plates. The size of the bracing members was limited to TS4 and TS6 sections so they could be easily accommodated within the walls. Analysis of the lateral loads on the structure was performed utilizing the frame modeling capabilities of STAAD3 from Research Engineers, Inc.

REFINEMENT OF THE BUILDING MASSING

After the design and documentation of the majority of the structure were well underway, the design team began to manipulate the rectangular mass of the building. To provide a residential scale appropriate for the neighborhood, several areas received particular design attention. These included the building entrance area, the southeast corner of the building at the street intersection, the mechanical roof screens and the loading dock.

To articulate the corner of the building at the street intersection, the architect chose to subtract from—rather than add to—the primary building mass. A residential scale was created by carving out the upper corner of the building and introducing a sloped shingled roof form similar to that seen on some of the near-

Automatic preheating or manual — how do you decide?

Once you compare, the choice is obvious. Automatic electrical resistance preheating helps control project costs by:

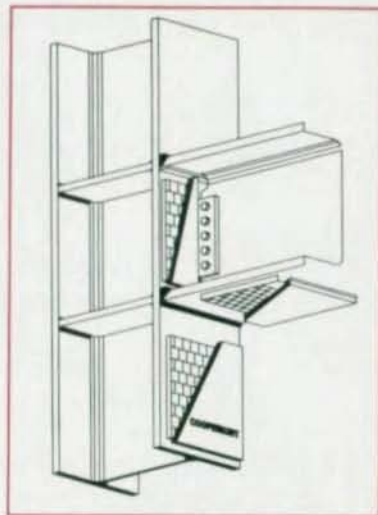
Increasing welder productivity

Labor costs are reduced because components are always ready for welding. Your personnel are freed from time-consuming manual preheating chores. The electrical equipment creates a safe working environment.

Avoiding expensive rework

Uniform maintenance of minimum temperature controls two common causes of rework — cracking and hydrogen formation.

Request our FREE literature and information on our successful Northridge earthquake projects.



Typical preheat layout for underside of column-beam weld joint



COOPERHEAT

CORPORATE HEADQUARTERS

1021 Centennial Avenue, Piscataway, NJ 08854

Toll Free: 800-526-4233

Tel: 908-981-0800 • Fax: 908-981-0850

Please circle # 42

by historic structures.

The primary structural refinement of the corner involved eliminating the corner bay of steel framing at the roof level. A sloping hipped roof was then introduced between the edges of the remaining structure. A W24 girder forms the ridge member that frames from the one-story corner column to the post atop the building column at the main roof. Roof rafters are supported on horizontally spanning steel beams at the second floor level, main roof level and the mechanical roof screen structure above.

Wood rafters were originally conceived to frame between the horizontal supports. However, galvanized metal studs were substituted for their economy, constructability and non-combustible characteristics.

MECHANICAL EQUIPMENT INTEGRATION

The sloping roof form was also

adapted to the mechanical equipment screens. These screens were integrated with the hipped roof at the corner to form a continuous sloping roof plane. The design challenge was to efficiently design the sloped screen support structure without introducing additional beams below the roof. This was particularly important because the roof framing members around the designated mechanical areas consisted of steel joists which would not take the concentrated point loads from the roof screen posts. Additionally, it was not necessary for the roof screens to continue all the way down to the roof surface. By keeping the screens up above the roof surface, the roof could run uninterrupted under the screens. This eliminated the need for additional roof drainage and crickets at the mechanical areas.

To implement this plan, the primary screen posts—TS8x8

structural steel tubes—were first located over the building columns for direct load transfer to the columns. A continuous horizontal steel beam and channel framed between the posts to provide the upper support for the vertical sloping roof rafters.

Next, two secondary screen posts—TS4x4 shapes—were located on the wide flange steel roof members on the column centerlines adjacent to each primary post. Another horizontal beam and channel then cantilevers over the secondary posts to meet at the lower ridge point. Wide flange corner ridge members connect the end of the cantilevered horizontal beams to the primary screen posts at the ridge peak. In this manner, an efficient screen support system was created which had limited impact on the primary roof structure already designed.

The design of the loading dock and receiving area was particu-

Making the Difference When Performance, Reputation and Quality Count.

- FULL TRACEABILITY
- LOT CONTROL
- CERTIFICATIONS

Registered head markings on all structural and machine bolts.



A-307-A



A-449



A-307-B

All products made from steel melted
and manufactured in the U.S.A.



St. Louis Screw & Bolt Company

6900 N. Broadway St. Louis, MO 63147 U.S.A.
1-800-237-7059/(314)389-7500/FAX (314)389-7510



Associate

larly important because of its prominent location along the major pedestrian walkway to the existing American Red Cross facility and directly adjacent to the Prismatic Club. A single story of framing was added onto the main volume of the structure to provide a covered area for loading operations. A sloping roof form similar to the opposite corner of the building continued from the mechanical screen on the roof down to the one-story eave line at the loading dock. Galvanized wide flange beams again form the ridge members that frame between columns to support the roof rafters. An arched dormer window characteristic of the neighboring buildings was also located on the roof at this location, providing natural light to the office areas inside.

In keeping with the existing vocabulary of the neighborhood, arched brick masonry openings were utilized at the receiving

area. The large flattened arch over the truck loading area was accomplished by incorporating a reinforced concrete beam within the brick masonry. This beam spans between the steel wide flange columns at each side of the beam. These columns are also encased in concrete for bracing and resisting the thrust of the flattened arch.

The main entrance of the facility was also designed as an addition to the main rectangular volume of the structure. Structural steel framing similar to the rest of the building was used. An exterior roof terrace off the second-floor break room articulates the mass of the building at the entrance. Half-round brick masonry arches are also used here. The inscribed cast-stone panel above the entrance is supported by a structural steel channel suspended from the wide flange spandrel beam at the second floor.

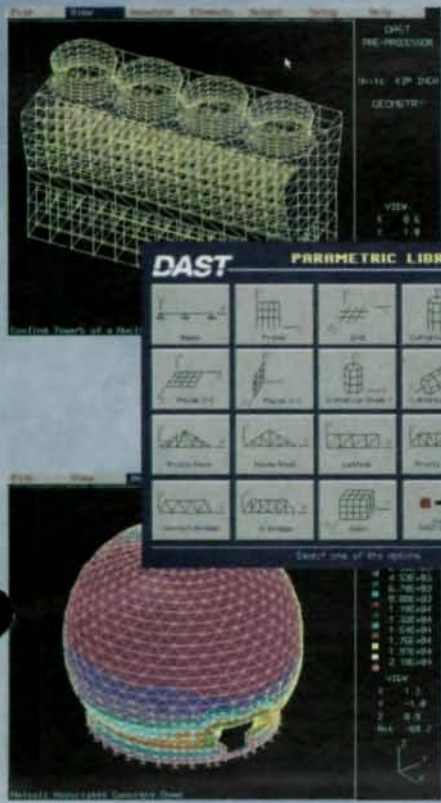
Despite many constraints, the end result is a building that architecturally responds to the surrounding neighborhood and functions efficiently as a state-of-the-art blood testing laboratory. By concentrating first on the basic design requirements of the building—and assuring those criteria could be accommodated within the designated budget—the design team created a building that is both architecturally sophisticated and cost-effective.

Kevin A. Yoder is a structural designer at Ewing Cole Cherry Brott. From its headquarters in Philadelphia, PA and offices in Washington, DC, and Haddonfield, NJ, Ewing Cole Cherry Brott offers specialized services to research and development, health care, academic, public sector, sports and entertainment clients nationwide.

DAST™

Comprehensive Structural Analysis and Design Software Series

Productivity you need. Value you demand.



DAST offers powerful structural design and analysis solutions in several easy-to-use packages designed for both infrequent and power users. Some DAST features include:

- 2D/3D Static, Dynamic, and P-Delta Finite Element Analysis
- Steel, Concrete, and Timber Design per American and various international codes
- Advanced graphics with animation and contours
- Icon-based user friendly Input Generator and Parametric Library
- Powerful AutoCAD interface
- Comprehensive printed and on-line documentation
- Unparalleled technical support

With all the other products available, why should you choose DAST? Simple. DAST Version 11 is the only package that combines powerful features, ease of use, value, a large user base, and over a decade's worth of structural software experience.

Call Toll FREE
1-800-322-1487
 FOR MORE INFORMATION
 AND A FREE DEMO.
 Ask about DAST for Windows!

Das Consulting, Inc.
 865 Turnpike Street
 North Andover, MA 01845 USA
 (508) 794-1487 • FAX: (508) 685-7230
 email: dascon1@world.std.com



DESIGNING STEEL-FRAMED CUT-AND-COVER TUNNELS

While more commonly framed with concrete, steel is often more economical for long, wide tunnels

By Brian Brenner, P.E., and David Bacon, P.E.



Pictured above is the construction of the Baltimore Shot Tower Station showing excavation, cross lot bracing and the SPTC wall. Pictured opposite is work on the Central Artery tunnel in Boston.

CUT-AND-COVER TUNNELS USUALLY ARE CONSTRUCTED OF REINFORCED CONCRETE WALLS AND SLABS. However, when design or environmental considerations require wide, deep tunnels, the concrete slabs and walls may become prohibitively thick. Wide tunnels with box spans of 80-ft. or more, and deep tunnels with backfill exceeding 20-ft., can require very thick (eight to nine ft. or thicker) reinforced concrete slabs. These slabs are difficult to construct and can make the tunnel prohibitively expensive to build by forcing its vertical profile down to provide the required vertical clearance within the tunnel itself.

One option to reduce horizontal and vertical structural dimensions is to frame the tunnel in steel. Using a combination of structural steel and reinforced concrete, roof slabs and wall members can be designed to take advantage of the inherent strength of composite construction.

TYPICAL TUNNEL SECTION

For steel-framed cut-and-cover tunnels, excavation support walls can be temporary or included as part of the final tunnel structure. When temporary cofferdam walls are used, a reinforced concrete base slab is cast, and then rigid steel frames are constructed within the excavation, with a pinned connection at the base. Cast-in-place concrete walls and roof slab are then

made composite with the rigid frame to form a watertight tunnel structure.

Although steel roof beams can be attached to a reinforced concrete wall when cofferdam walls are to be included as part of the final tunnel structure, a more efficient utilization of the strength of structural steel can be achieved by using Soldier Pile Tremie Concrete (SPTC) walls. For this type of cofferdam wall, wide flange soldier piles are inserted into a slurry trench, then the space between the soldier piles is filled with tremie concrete. The steel soldier piles form the vertical framing element of the rigid frame, which consists of the soldier piles, the composite roof beams and the reinforced concrete base slab.

Another construction method utilizing structural steel soldier piles is to build the cofferdam/final structure wall from tangent (or secant) piles. Steel sections are inserted into pre-augured holes (typically drilled without steel sleeves that are held open with bentonite slurry and back-filled with tremie concrete).

The tunnel roof is constructed of steel roof beams made composite with a concrete deck. The base slab is constructed of reinforced concrete. Roof beam spacing matches the soldier pile spacing (or the steel column spacing) in a cast-in-place concrete wall. Due to the span lengths required in wide tunnels, roof beams are typically built-up girders. The concrete roof deck is usually six-in. to 12-in. thick and the design is similar to that prepared for a composite bridge deck. However, the tunnel section tends to have a higher percentage of dead load than a bridge deck, since soil backfill is treated as a superimposed dead load. Another difference is the much greater axial compression load. The tunnel roof acts not only in bending, but as a strut between exterior walls of the box. Conservative design practice recommends that all of the axial load be carried by the steel beam. This leads to easier



Because headroom clearance on the Central Artery tunnel project in Boston was only 20-ft., the 100-ft. long soldier piles needed a bolted splice detail utilizing A490 bolts.

connection details and staging requirements, since the concrete roof does not need to be cast and brought up to design strength before inward loads from the cofferdam walls are transferred to the members.

The design force used to size the tension flange of the built-up girder should not be reduced by the full calculated axial compressive load from strut action. This conservative practice takes into account variations in earth pressure during construction staging and potential reductions in the loads applied to the cofferdam walls. For example, at dewatered excavations, the pore water pressure may not return fully to its pre-construction level for many years, thus reducing the axial compression force applied to the roof beams.

DETAILS

Special concerns when dealing with steel-framed cut-and-cover tunnels include: field tolerances for cofferdam walls; corrosion protection; waterproofing; details for steel-to-steel connections (and for steel-to-concrete connections); and field splicing of soldier piles for SPTC walls.

When SPTC walls are used as part of the final tunnel structure, soldier pile installation tolerance is an important concern. Soldier piles cannot be installed exactly at the location specified on the construction drawings since the piles will tilt out of plumb in both axes, rotate, and deviate from horizontal tie. Therefore, it's important to consider all of these tolerances in order to correctly fabricate members and connection details. For example, if steel roof beams are to be field-connected to the soldier piles, the exact dimension for each beam cannot be determined until a detailed field survey has been conducted at all locations.

Waterproofing for steel frames constructed within temporary excavation support walls is relatively straightforward. Waterproofing materials can be installed on the side walls, below the base slab and on the roof deck prior to backfilling.

For the case of SPTC walls included in the final structure, it is not possible to provide blind side waterproofing around the tunnel box. Instead, waterproofing is installed over the roof deck

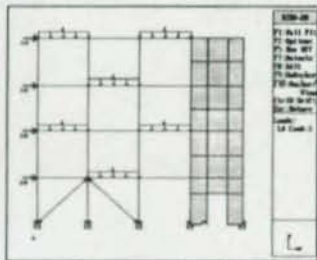
A Quick Quiz For Structural Engineers

The more a computer program costs, the better it is. TRUE FALSE

A program that solves complex, difficult problems must be complex and difficult to use. TRUE FALSE

Structural engineering software can never be fun to use. TRUE FALSE

If you answered *TRUE* to any of the above, or you would like to know more about a truly innovative software program, call us!



RISA-2D

Your complete solution for
frames, trusses, beams,
shear walls and much more!



26212 Dimension Drive, Suite 200
Lake Forest, CA 92630
1-800-332-7472

Please circle # 40

and up the side of the SPTC wall. The inherent water tightness of the SPTC wall itself is the only primary protection against water intrusion through the tunnel walls. For this design, waterproofing of the connection between the roof girder and the soldier pile is critical. The connection is usually designed to allow rotation to occur and the rotation must be accommodated by movement within the waterproofing detail.

The corrosion protection of non-waterproofed SPTC walls is an important consideration that requires careful investigation of specific site conditions around the tunnel. Issues such as the fluctuation of groundwater levels, pH of the soil, stray currents in the groundwater surrounding the tunnel, and the amount of electrical work within the tunnel itself all contribute to the decision making process required to determine the corrosion protection of the SPTC wall.

EXAMPLE 1: WASHINGTON MALL TUNNEL

The Washington Mall tunnel (Washington, DC), the Baltimore Metro Shot Tower Station, and the Central Artery tunnel (Boston) are all examples of cut-and-cover tunnels with steel framing.

The Washington Mall tunnel was constructed in the late 1960s. The cut-and-cover highway tunnel provides a path for a six-lane expressway beneath the Mall in the nation's capitol. The tunnel features a concrete base slab, approximately five- to eight-ft. thick, with steel girders and columns spaced at four- to six-ft. on center. The roof girders are built-up sections 61-in. deep, spanning approximately 100-ft.

Some girders span more than 115-ft. between exterior walls. The roof girders are supported by intermediate columns that are used to help frame air ducts on both sides of the tunnel. At some sections, the girders are continuous across the intermediate columns, framing into a

WHITEFAB INC.

BIRMINGHAM
ALABAMA

IN ADDITION TO ANGLE, RAIL, PIPE, CHANNEL, AND BEAM ROLLING
CAPABILITIES, WE ROLL TUBES, CHANNELS, AND BEAMS THE HARD WAY.
Phone (205)791-2011 FAX (205)791-0500

Please circle # 55

moment connection with exterior wall columns. At other sections, the girders are simply supported by the intermediate columns, and separate steel W sections form the roof of the side air ducts. The girders support a six-in. concrete roof slab.

Girders are supported by built-up steel columns. The columns are embedded in cast-in-place concrete walls. When the roof girders run continuous across intermediate columns, the exterior columns are detailed in a fixed connection to the concrete base slab. The detail includes high-strength anchor bolts connected to a bearing plate at the bottom of the concrete slab.

EXAMPLE 2: BOSTON'S CENTRAL ARTERY

The depressed Central Artery in downtown Boston will replace a six-lane viaduct with an eight-to 10-lane tunnel. Construction activity began last year on the 6,000-ft.-long tunnel, which is located beneath the original structure. The structure features SPTC walls, steel/concrete composite roof beams, and a reinforced concrete base slab. The SPTC walls are used as part of the final tunnel structure. Soldier piles are spaced at four-to six-ft., with wider spacing in some locations. The piles are heavy W36 sections made of high strength steel. Steel/concrete composite roof beams are designed with a rotationally free connection to the piles. The connection is erected by welding a seating angle or folded plate to the pile, placing the girder, and then fastening the girder web to the pile with angles. The roof beams are built-up, high-strength steel girder sections, four- to eight-ft. deep, with a 12-in.-thick concrete roof slab.

The reinforced concrete base slab varies from four- to 12-ft. thick. The base slab has a rigid, moment resisting connection to the soldier piles and the transfer of forces from the base slab, which is continuous, to the discrete pile elements is accom-



One of the difficulties with the Central Artery Project is the low head room beneath the existing Artery viaduct. Pictured is a soldier pile with bolted splices.

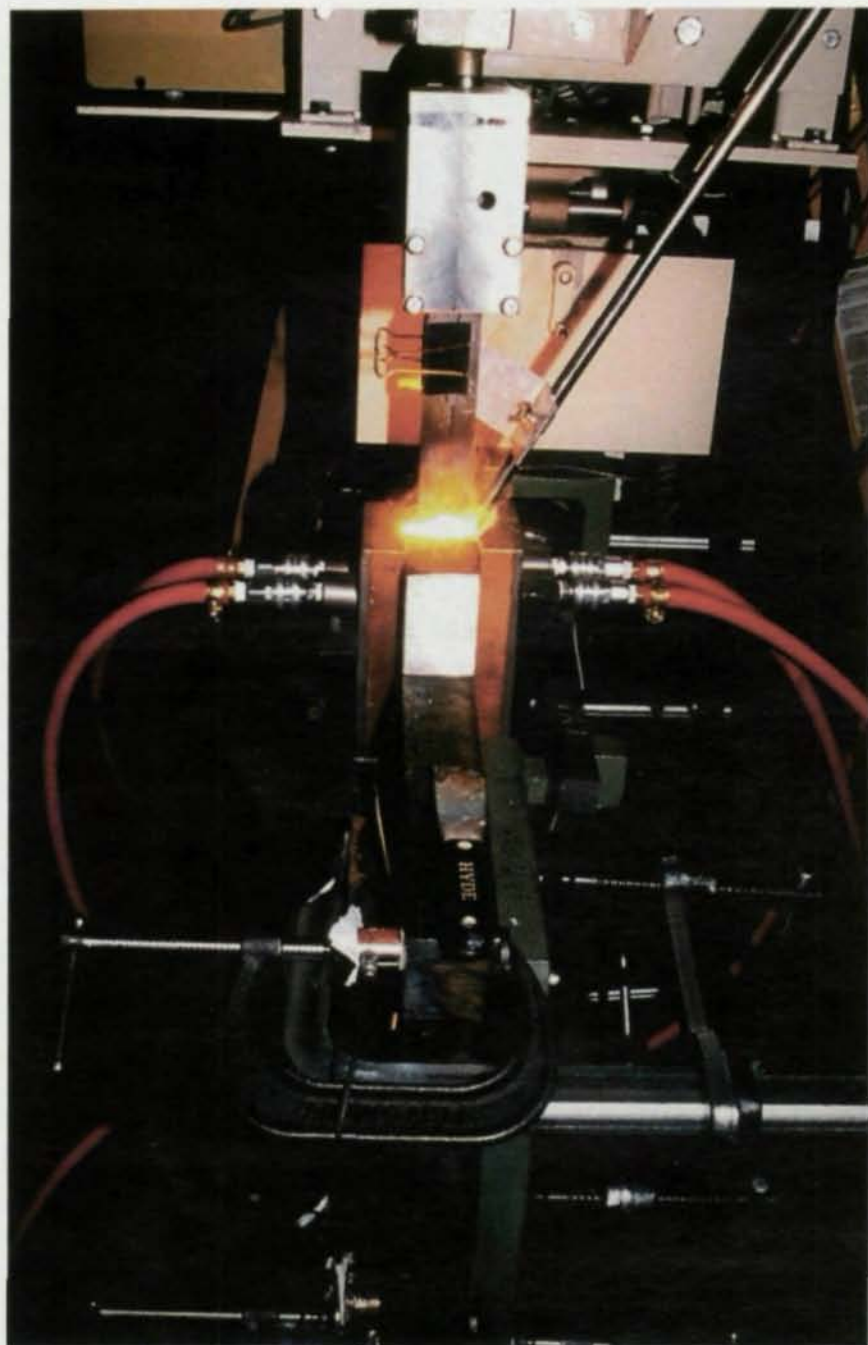
plished by a distribution beam that is made integral with the slab.

The requirement of keeping the existing roadway in service during the tunnel construction imposed some unusual challenges. For the SPTC walls, 100-ft.-long soldier piles will need to be installed in locations with the headroom clearance is only 20-ft. A bolted splice detail was designed with splice plate lengths that are minimized through the use of ASTM A490 bolts (bearing, with threads excluded from the shear plane). This was necessary because the available splice locations were restricted by base slab moment connection details on both sides of soldier piles. The available space was further complicated by independent gradients for the northbound and southbound tunnels, which were separated by a

center SPTC wall. A bolted splice was selected because the splice must be completed quickly during the slurry trench operation to prevent a cave-in of the slurry trench walls.

The SPTC walls were designed to support underpinning loads from the existing elevated expressway. The underpinning consisted of a series of grade beams and needle beams straddling the steel column bents and concrete footings of the viaduct. The grade beams span from slurry wall-to-slurry wall.

Brian Brenner, P.E., is a senior professional associate and David Bacon, P.E., is a project engineer, both with PBQD and both working for Bechtel/Parsons Brinckerhoff.



ELECTROSLAG WELDING FOR BRIDGES

A new FHWA program is helping engineers and fabricators learn about this advanced welding technology

By Krishna K. Verma

ELECTROSLAG WELDING (ESW) IS A PROCESS THAT JOINS METALS WITH HEAT GENERATED BY PASSAGE OF ELECTRIC CURRENT THROUGH MOLTEN CONDUCTIVE FLUX, which melts the filler and base metals. Now in its final stage, a comprehensive Federal Highway Administration (FHWA) R&D effort (Demonstration Project DP-102) is designed to transfer the new technology to state DOTs and bridge fabricators.

Due to its high deposition rate, ESW is considered the most productive of any welding process in joining thick components. Initially, when the process was introduced in the U.S. in the late 1960s, there was some obvious success. However, certain welding problems began to surface in terms of welding imperfections and inadequate properties, which led, in 1977, to the FHWA placing a moratorium (FHWA Notice 5040.23) on the use of EWS for weldments on primary structural tension bridge members. The notice effectively eliminated the use of ESW not only in bridge fabrication but from various other U.S. industries as well.

In the 1980s, the FHWA launched a comprehensive

**MODERN STEEL
CONSTRUCTION**
Reader Service Card

Please type or print only

name _____
 company name _____
 address _____
 city _____ state _____ zip code _____
 () ()
 business telephone _____ fax number _____

Check this box to renew or start a **FREE*** subscription to *Modern Steel Construction* *This offer good only for practicing professionals within the U.S.

signature _____

For free information on advertisers and other companies mentioned in this issue, circle the appropriate number below:

- | | | | | | | | | | | | |
|-----|-----|-----|-----|-----|-----|-----|-----|-----|-----|-----|-----|
| 1 | 2 | 3 | 4 | 5 | 6 | 7 | 8 | 9 | 10 | 11 | 12 |
| 13 | 14 | 15 | 16 | 17 | 18 | 19 | 20 | 21 | 22 | 23 | 24 |
| 25 | 26 | 27 | 28 | 29 | 30 | 31 | 32 | 33 | 34 | 35 | 36 |
| 37 | 38 | 39 | 40 | 41 | 42 | 43 | 44 | 45 | 46 | 47 | 48 |
| 49 | 50 | 51 | 52 | 53 | 54 | 55 | 56 | 57 | 58 | 59 | 60 |
| 61 | 62 | 63 | 64 | 65 | 66 | 67 | 68 | 69 | 70 | 71 | 72 |
| 73 | 74 | 75 | 76 | 77 | 78 | 79 | 80 | 81 | 82 | 83 | 84 |
| 85 | 86 | 87 | 88 | 89 | 90 | 91 | 92 | 93 | 94 | 95 | 96 |
| 97 | 98 | 99 | 100 | 101 | 102 | 103 | 104 | 105 | 106 | 107 | 108 |
| 109 | 110 | 111 | 112 | 113 | 114 | 115 | 116 | 117 | 118 | 119 | 120 |
| 121 | 122 | 123 | 124 | 125 | 126 | 127 | 128 | 129 | 130 | 131 | 132 |

1. Type of work
Please circle **all** that apply

- a. Bridges
- b. Office Buildings
- c. Hospitals
- d. Retail
- e. Industrial
- f. Schools
- g. Multifamily
- h. Institutional
- i. Low-Rise
- j. High-Rise

2. Your position
Please circle **ONLY** one

- a. Owner/President
- b. Chief Engineer/Chief Architect/Department Head
- c. Staff Engineer/Staff Architect/Construction Manager
- d. Other

3. Type of business
Please circle **ONLY** one

- a. Structural engineer
- b. Civil engineer
- c. Structural steel fabricator
- d. Other fabricator
- e. Educator/library
- f. Architect
- g. Building owner/developer
- h. Steel mill
- i. Erector
- j. Steel product manufacturer
- k. GC/CM
- l. Student
- m. Other

4. Reason for Inquiry
Please circle **ONLY** one

- a. Information file
- b. Immediate or Future Purchase

Please type or print only

name _____
 company name _____
 address _____
 city _____ state _____ zip code _____
 () ()
 business telephone _____ fax number _____

Check this box to renew or start a **FREE*** subscription to *Modern Steel Construction* *This offer good only for practicing professionals within the U.S.

signature _____

For free information on advertisers and other companies mentioned in this issue, circle the appropriate number below:

- | | | | | | | | | | | | |
|-----|-----|-----|-----|-----|-----|-----|-----|-----|-----|-----|-----|
| 1 | 2 | 3 | 4 | 5 | 6 | 7 | 8 | 9 | 10 | 11 | 12 |
| 13 | 14 | 15 | 16 | 17 | 18 | 19 | 20 | 21 | 22 | 23 | 24 |
| 25 | 26 | 27 | 28 | 29 | 30 | 31 | 32 | 33 | 34 | 35 | 36 |
| 37 | 38 | 39 | 40 | 41 | 42 | 43 | 44 | 45 | 46 | 47 | 48 |
| 49 | 50 | 51 | 52 | 53 | 54 | 55 | 56 | 57 | 58 | 59 | 60 |
| 61 | 62 | 63 | 64 | 65 | 66 | 67 | 68 | 69 | 70 | 71 | 72 |
| 73 | 74 | 75 | 76 | 77 | 78 | 79 | 80 | 81 | 82 | 83 | 84 |
| 85 | 86 | 87 | 88 | 89 | 90 | 91 | 92 | 93 | 94 | 95 | 96 |
| 97 | 98 | 99 | 100 | 101 | 102 | 103 | 104 | 105 | 106 | 107 | 108 |
| 109 | 110 | 111 | 112 | 113 | 114 | 115 | 116 | 117 | 118 | 119 | 120 |
| 121 | 122 | 123 | 124 | 125 | 126 | 127 | 128 | 129 | 130 | 131 | 132 |

1. Type of work
Please circle **all** that apply

- a. Bridges
- b. Office Buildings
- c. Hospitals
- d. Retail
- e. Industrial
- f. Schools
- g. Multifamily
- h. Institutional
- i. Low-Rise
- j. High-Rise

2. Your position
Please circle **ONLY** one

- a. Owner/President
- b. Chief Engineer/Chief Architect/Department Head
- c. Staff Engineer/Staff Architect/Construction Manager
- d. Other

3. Type of business
Please circle **ONLY** one

- a. Structural engineer
- b. Civil engineer
- c. Structural steel fabricator
- d. Other fabricator
- e. Educator/library
- f. Architect
- g. Building owner/developer
- h. Steel mill
- i. Erector
- j. Steel product manufacturer
- k. GC/CM
- l. Student
- m. Other

4. Reason for Inquiry
Please circle **ONLY** one

- a. Information file
- b. Immediate or Future Purchase



NO POSTAGE
NECESSARY
IF MAILED
IN THE
UNITED STATES

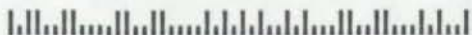
BUSINESS REPLY MAIL

FIRST CLASS MAIL PERMIT NO. 12522 CHICAGO, IL

POSTAGE WILL BE PAID BY ADDRESSEE

**MODERN STEEL
CONSTRUCTION**

c/o CREATIVE DATA SERVICES
650 S CLARK ST
CHICAGO, IL 60605-9960



Use these cards to request information from manufacturers and other companies mentioned in this issue. Simply circle the numbers referenced in the advertisement or article, fill out the rest of the information requested on the card, and either mail it to: Modern Steel Construction, Creative Data Center, 650 South Clark St., Chicago, IL 60605-9960 or fax it to: **312/922-3165.**



NO POSTAGE
NECESSARY
IF MAILED
IN THE
UNITED STATES

BUSINESS REPLY MAIL

FIRST CLASS MAIL PERMIT NO. 12522 CHICAGO, IL

POSTAGE WILL BE PAID BY ADDRESSEE

**MODERN STEEL
CONSTRUCTION**

c/o CREATIVE DATA SERVICES
650 S CLARK ST
CHICAGO, IL 60605-9960



**MODERN STEEL
CONSTRUCTION**
Reader Service Card

research and development in the area of ESW technology. The main objectives of the program were to better understand the specifics of the ESW process and to advance the level of applied ESW technology. ESW operating procedures and weld properties were significantly improved as a result of the initial phase of this research program, which was conducted by the Pacific Northwest Laboratory (PNL), Richland, WA, and the Oregon Graduate Institute of Science and Technology (OGI), Beaverton, OR. Foremost, the Narrow-Gap Improved (NGI) ESW technique, an improved modification of ESW process, was developed.

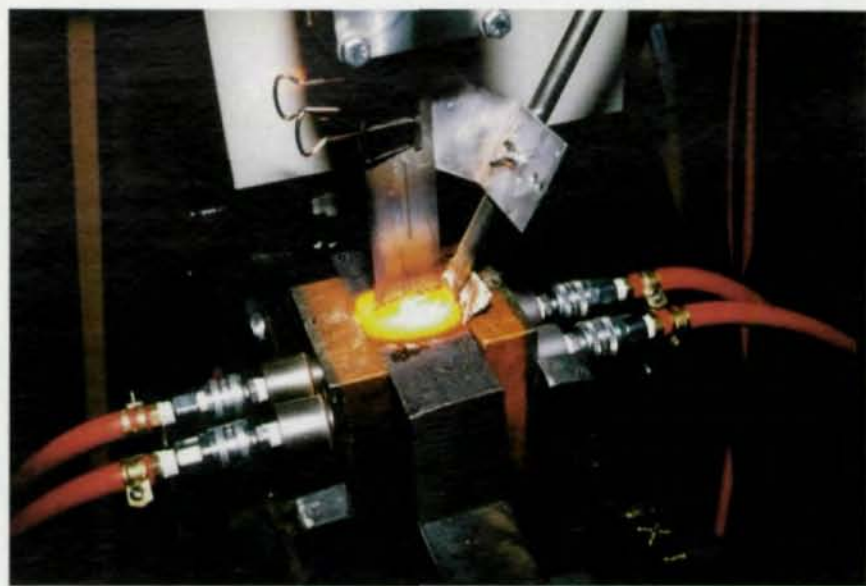
The NGI technique produces satisfactory welds and considerably improves Charpy V-notch (CVN) toughness. In the early 1990s, extensive field trials were conducted based on the research findings. These trials were conducted at four bridge fabrication facilities and showed satisfactory results.

In September 1993, FHWA awarded a four-year contract to BIRL, Northwestern University's industrial research laboratory based in Evanston, IL. A team of researchers, led by Northwestern's Valdemar Malin, Ph.D., and assisted by an advisory board of federal and state transportation officials and bridge and welding engineers from private industry. FHWA's technical representative and program manager for this project is Krishna K. Verma, Welding Engineer of the Bridge Division of FHWA's Washington, DC, office.

PROGRAM OBJECTIVES

The objectives of Demonstration Project DP-102, "Electroslag Welding for Bridges," include:

- **ESW Equipment and Materials Availability.** An important task for acceptance of ESW is to ensure that the required equipment and materials be commercially available to users for making



Pictured opposite: The slag pool is approaching the top of the run-off tabs at the upper end of the electroslag weld.

Pictured above: The slag pool is at the top of the run-off tabs immediately after the power has been turned off.

production welds.

- **Development of ESW Documentation.** A comprehensive package of specifications and guides required by the FHWA is being developed by BIRL and is close to completion. The guides contain technical, procedural, and training information on ESW. Proposed Specifications (Code requirements) are oriented toward inclusion into ANSI/AASHTO/AWS D1.5 Bridge Welding Code.
- **Verification of NGI ESW Procedure.** The equipment, the new electrode wire, the restored flux formulation, and the recommended ESW procedure have to be tested. This is crucial for the implementation of the new technology. The laboratory trials conducted at BIRL's welding laboratory have proven that acceptable electroslag welds can be produced on a regular basis.
- **Verification of Toughness in Electroslag Welds.** Testing during the demonstrations will prove that acceptable toughness of

Electroslag welds can be produced on a regular basis.

- **Transfer of New ESW Technology.** To methodically transfer the new ESW technology to state DOTs, bridge fabricators and FHWA representatives, relevant information on the NGI ESW technique will be disseminated and actual ESW making would be demonstrated. ESW demonstrations will start in September 1995 and will be presented in various locations in the U.S. During the demonstration phase, a plan is in place to develop video training materials on NGI/ESW for future use by state agencies, fabricators and others.

For information on the demonstration projects contact the Federal Highway Division office in your individual state or call Krishna Verma at 202/366-4601.

Krishna K. Verma is a Welding Engineer for the Bridge Division in FHWA's Washington, DC, office.



FILTRATION EQUIPMENT

A new gravity flow type media filter, THE ELIMINATOR, is designed to filter metal fines from metalworking fluids. Simple in design, heavily built, easily installed and flexible, the filtration system is designed to be highly efficient, low cost and long lasting. It requires only air to operate, and handles all types of grinding dirt and machining chips. Plus, it has no rubber seals to wear out. The system can filter flow rates from 5 to 160 GPM.

For information, contact: Clarmatic Industries, 504 East Front Street, P.O. Box 780, Pemberville, OH 43450; 800/521-5246; fax: 419/287-3836 or **CIRCLE # 21**

ACCESS AND CONTAINMENT SYSTEMS

Using five patented systems in combination with custom-engineered components, Beeche System Corp. has designed safe and cost-effective access and containment systems that have traversed even the most challenging of buildings and bridges. All of the systems meet or exceed local, state and federal (OSHA) standards. The systems include:

- Containment Systems can be easily modified to accommodate all levels of lead paint containment, including SSPC "Class 1 Containment";

- Building Construction and Maintenance Systems, which significantly reduce the amount of labor required to successfully and cost-effectively complete many types of building construc-

tion or maintenance projects; and

- Bridge Access Systems, feature a modular aluminum truss frame to provide safe and efficient work platforms.

For more information, contact: Beeche Systems Corp., Building 202, Scotia-Glenville Industrial Park, P.O. Box 2024, Scotia, NY 12302; 518/381-6001; fax: 518/381-4613 or **CIRCLE # 22**

GANTRY CRANE

The MI-JACK TRAVELIFT is a self-propelled rubber-tired gantry crane able to pick and carry its capacity safely with capacities ranging from 15 to 325 tons. Dimensions are customized to the customer's application. The crane can straddle incoming and outgoing trucks and railroad cars to speed loading and unloading operations. A variety of material attachments, such as slings, magnets, hooks and clamps, can be utilized to solve more refined storage and transporting problems.

For more information, contact: Mi-Jack Products, 3111 W. 167th St., Hazel Crest, IL 60429; 708/596-5200; fax: 708/225-2312 or **CIRCLE # 115**

SAWS

A new brochure from Kaltbach describes the company's line of semi-automatic heavy-duty bandsaws, semi-automatic heavy duty bandsaws for miter cutting, and fully-automatic heavy duty bandsaws. In addition, the literature describes the development of sawing centers tailored to individual customer's applications. Several applications are shown, including a walking beam cross loader with multiple stations; a cutting center with walking beam cross loader, bandsaw with miter base, CNC length measuring and ejection system; and a cutting center for bundled material in hexagonal, square, or rectangular configuration.

For more information, contact:

Kaltenbach, Inc., 6775 Inwood Dr., P.O. Box 1629, Columbus, IN 47202; 812/342-4471; fax: 812/342-2336 or **CIRCLE # 29**



TELESCOPING BOOM

The PRO-126 is a new telescoping boom with a 6-ft. articulating jib boom and a 132-ft. working height. The boom features a hydraulically operated self-stowing platform that slides into position so the unit will fit on a conventional low-boy style trailer. The stowed length of the boom is 42-ft.-9-in. The unit's work platform is 92-in. wide with 500 lbs. capacity and can rotate continuously from 90 degrees left to 90 degrees right.

For more information, contact: Don Roach, Snorkel-Economy, Box 4065, St. Joseph, MO 64504-0065; 816/364-0317; fax: 816/364-0380 or **CIRCLE # 62**

DRILLING UNITS

A new brochure from Behringer Saws describes a wide variety of drilling equip-

ment, including drills, punches, shears and CNC controls. The most extensive unit featured is the FP 1200, a fully CNC controlled drilling unit allowing fast working of flat bars, angles and structural sections.

For more information, contact: Behringer Saws, Inc., Morgantown, PA 19543; 610/286-9777; fax: 610/286-9699 or **CIRCLE # 69**



PUNCHES & DIES

The Cleveland Steel Tool Co. has announced that punches and dies for Hougen-Ogura hole punching machines, models 75001 through 75006, are now available. The tooling is available in round, oblong, square, rectangular and hexagonal shapes and can be shipped within 48 hours.

For more information, contact: The Cleveland Steel Tool Co., 475 East 105th St., Cleveland, OH 44108; 800/446-4402; fax: 216/681-7009 or **CIRCLE # 67**

BENDING STEEL

Contemporary architecture and design is once again calling on curved structural steel for its grace, beauty and design flexibility and NAPTech's 320,000-sq.-ft. facility is designed to meet very tight delivery times. Induction bending can be used for heavy angles, channels, wide flanges and tubes.

For more information, contact: NAPTech, Inc., 851 South Freeport Industrial Pkwy., Clearfield, UT 84015; 801/773-7300; fax: 801/773-6185 or **CIRCLE # 116**

STEEL PROCESSING

Arkansas Steel Processing can supply a fully processed product, including cutting, drilling, coping and bolted clip angles. The company specializes in floor, framing and perimeter beams, girders and columns and can either supply material or process a fabricator's material. In addition, ASP can supply WT's split from wide flange beams, can supply material cambered to a customer's specification, and can supply beam and column material cut or milled to size.

For more information, contact: Arkansas Steel Processing, Inc., P.O. Box 129, Armored, AR 72310; 501/762-1000; fax: 501/762-1411 or **CIRCLE # 125**

ROTATING & POSITIONING EQUIPMENT

A new brochure from Romar describes the manufacturer's line of automated weld positioning equipment. Included are: conventional rotators; special rolls; automatic tank welders; pile racks; positioner/turntables; beam lines; and manipulator columns & booms.

For more information, contact: Romar Elite Automation, Inc., P.O. Box 3417, Tustin, CA 93681; 714/569-1050; fax: 714/569-1009 or **CIRCLE # 119**

PUNCHES

A wide range of punches and dies are described in a new brochure from Hougen. The punches range from the Punch-Pro 75001, a small, light portable punch suitable for light structural applications, to the Punch-Pro 75006, which can punch flat, channel, H-steel, and angle with holes up to $1\frac{5}{16}$ in. through $\frac{1}{2}$ -in. stock.

For more information, contact: Hougen, G-5072 Corunna Road, Flint, MI 48504; 313/732-5840; fax: 313/732-3553 or **CIRCLE # 99**



DRILL PRESSES

Jancy Engineering has introduced a new line of (beltless) gear-drive multiple speed drill presses. The heavy duty design includes solid cast iron bases and drilling tables. A rigid $4\frac{3}{8}$ -in. diameter column adds strength and stability. All units ship standard with three Morse taper spindle, quick change speed controls, precision drilling depth gauge for accuracy and repeatability.

Also available from Jancy is the BM-20, a new generation portable bevel machine designed for beveling steel plates and pipe. Each machine is fitted with two milling heads holding six indexable cermet inserts allowing smooth and efficient operation while beveling.

For more information, contact: Jancy Engineering Co, 2735 Hichory Grove Road, Davenport, IA 52804; 319/391-1300; fax: 319/391-2323 or **CIRCLE # 72**

FABRICATION EQUIPMENT

A new catalog from Comeq, Inc. describes the company's line of fabrication equipment, including: Roundo beam benders, angle bending rolls, plate bend-

AISC

Publications

and Software

**Now Available:
1995-1996 listing
and prices of
AISC publications
and software**

Including:

- Manuals
- Specifications & Codes
- Design Guides
- Conference Proceedings
- Journals & Magazines
- Books from other publishers
- Electronic Publications
- Video Products
- Software

New this year:

- Guide For Metric Steel Fabrication
- Nuclear Specification
- Welding of Steel Bridges
- Innovative Practices In Structural Steel Video

For a **FREE**
copy, call:
800/644-2400

ing rolls and welding positioners; Adira upstroking and downstroking press brakes; Americor hydraulic and mechanical shears; and Geka single and dual cylinder hydraulic ironworkers and punches.

For more information, contact: Comeq, Inc., P.O. Box 2193, Baltimore, MD 21203; 410/325-7900; fax: 410/325-1025 or **CIRCLE # 68**



HAND-HELD GRINDERS

Chicago Pneumatic Electric Tools has introduced the most powerful 5-in. angle grinder in its class. With an 11 amp, 1,200 watt rating, the new WS1200 weighs only 4.2 lbs., for a superior power-to-weight ratio. Also new are two- and three-horsepower vertical grinders featuring a vibration isolation system.

For more information, contact: Chicago Pneumatic Tool Co., 2200 Bleecker St., Utica, NY 13501; 315/792-2600; fax: 315/792-2651 or **CIRCLE # 103**

ANGLE & FLAT BAR PROCESSING

A new product sheet from Controlled Automation describes the ABL-100-2 angle and flat bar processing line. The product offers both single and double cut 215 ton shears, double die holders, automated park marking, 115 ton punch, and automated cut-off torch for fast and accurate flat bar sizing.

For more information, contact: Controlled Automation, Inc., P.O. Box 530, Bryant, AR 72089; 501/557-5109; fax: 501/557-5618 or **CIRCLE # 104**

BENDING MACHINES

A new brochure from Advanced Fabricating Machinery describes two bending machines for hollow structural sections. The QB-76 has a bending capacity of up to 2 1/2-in. round sections while the QB-50 has a capacity up to 1 1/2-in round sections.

For more information, contact: Advanced Fabricating Machinery, #65 Route 125, Kingston, NH 03842; 603/382-1476; fax: 603/642-4813 or **CIRCLE # 105**

STEEL BENDING

Chicago Metal Rolling has expanded its capabilities to include bending or rolling all sizes of pipe and tubing from 3/8-in. to 14-in., angle iron from 1/2-in. x 1/2-in. x 1/8-in. to 10-in. x 10-in. x 1-in., square bar from 1/4-in. to 8-in., and square tubing from 3/8-in. to 14-in.

For more information, contact: Chicago Metal Rolled Products, 3715 South Rockwell, Chicago, IL 60632; 312/523-5757; fax: 312/650-1439 or **CIRCLE # 66**

SAWING FLUID

Lenox Band-Ade Sawing Fluid is a new, high-performance, biodegradable sawing fluid. Formulated to provide a direct productivity increase, the fluid offers superior releasing agents to clear chips and shavings from the gullet after the teeth pass through the material being cut.

For more information, contact: American Saw & Manufacturing Co., 301 Chestnut St., P.O. Box 504, East Longmeadow, MA 01028-0504; 800/628-3030; fax: 413/525-3961 or **CIRCLE # 113**

PLATE ROLLS

New initial-pinch plate rolls are available in lengths of 6-8- and 10-ft. and capacities from 1/8-in. to 3/8-in. The machines feature all steel frame, electro-mechanical drive, power rear roll adjustment, movable control pedestal and arrangement for options such as cone and angle

bending attachments.

For more information, contact: Cole-Tuve, Inc., Box 2156, Baltimore, MD 21203-2156; 410/485-7777; fax: 410/485-7778 or **CIRCLE # 126**



ROLL FORMING

The patented ASC Break & Hump Roll Forming System features: enhanced CNC software; batch uploading or downloading by a supervisory computer; squeeze-type sheet lubrication; one-man operation; reduced floor space; reduced scrap; two-post shear configuration; four-post shear configuration for punching or notching; AC servo feed roll assembly; dual glide systems; and quick disconnect drive option. Also, no special press foundations are required.

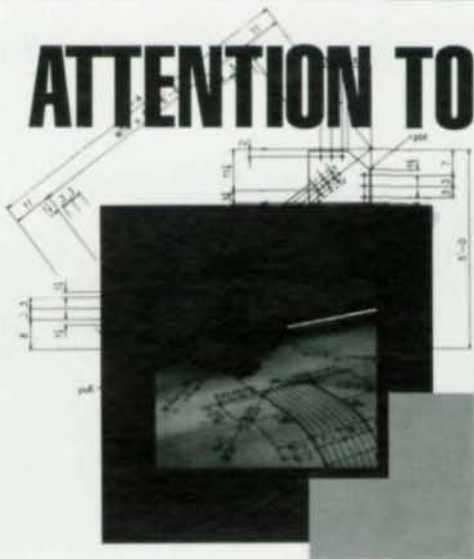
For more information, contact: ASC Machine Tools, Inc., N. 900 Fancher Road, P.O. Box 11619, Spokane, WA 99212-1619; 509/534-6600; fax: 509/536-7658 or **CIRCLE # 128**

DUAL COLUMN SAWS

American-made, dual column cut-off saws for faster cutting with closer tolerances are described in a new catalog from DoALL Co. All the saws feature hardened, ground and chrome plated columns that support the saw head and have a hydraulic feed cylinder between the columns for balanced feed control. The design provides stability and reduced vibration for exceptional accuracy.

For more information, contact: Dave Snyder, DoALL Co., 254

ATTENTION TO DETAIL



Computer Detailing Systems, Inc. introduces a state of the art structural steel detailing system which allows fabricators and detailers to meet the demands of the future with the ability to generate connection calculations, download to CNC equipment and interface with major design firms through the Steel Detailing Neutral File.

A practical, flexible system requiring minimal training, CDS is capable of producing intelligent 3D models, floor plans and elevations as well as shop drawings of unsurpassed quality using your standards and paper.

CDS is currently used by fabricators and detailers throughout the US and in Canada.

CONTACT COMPUTER DETAILING SYSTEMS today FOR A FREE INFORMATION PACK.

CDS

Structural Steel Detailing System

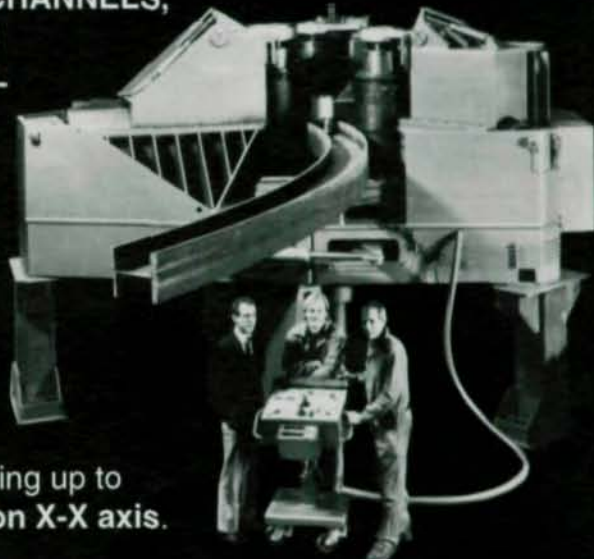
Computer Detailing Systems, Inc. • 7280 Pepperdam Avenue • Charleston, South Carolina 29418 • (803)552-7055

Please circle # 63

ROUND BEAM BENDERS

FOR BEAMS, CHANNELS,
PIPE & OTHER
SYMMETRICAL
SECTIONS

Ideal for beams
and channel
both the
"hard way"
and the
"easy way".



Capacities ranging up to
44" WF beam on X-X axis.

Section modulus capacities over 1000 in³.

COMEQ, INC.

Phone: (410) 325-7900

P.O. Box 2193
Balto., MD 21203

Fax: (410) 325-1025

Please circle # 68

MACHINERY, TOOLS & MATERIAL HANDLING

North Laurel Ave., Des Plaines, IL 60016; 612/890-3300; fax: 612/895-6450 or **CIRCLE # 129**



HEAVY MOVING KITS

Safe and economical heavy equipment moving on delicate or standard concrete floors is possible with Hilman Rollers' Deluxe Moving Kits. The 11 kits range in capacity from 2 to 60 tons. Six deluxe kits feature Hilman Rollers with steel chains, while five models come with special non-marring solid nylon chain for use on coated, painted or other specialized floor surfaces.

For more information, contact: Hilman, Inc., 2604 Atlantic Ave., Wall, NJ 07719; 908/528-0880; fax: 908-223-8072 or **CIRCLE # 130**

HEAVY DUTY CLEANING

Weiler's Black Gold Grooved Polyflex Encapsulated Cup Brush provides maximum cutting action and low per-piece costs when doing heavy weld scale and rust removal, pipe bevel preparation prior to welding, surface refinement and juncture bending.

For more information, contact: Weiler Brush Co., 1 Wildwood Dr., Cresco, PA 18326; 717/595-7495; fax: 717/595-2002 or **CIRCLE # 121**

BAND SAWS

A new brochure from Peddinghaus describes the company's twin column structural steel band saw with guillotine blade approach for maximum

efficiency when sawing structural steel.

For more information, contact: Peddinghaus Corp., 300 N. Washington Ave., Bradley, IL 60915; 815/937-3800; fax: 815/937-4003 or **CIRCLE # 118**

SAW BLADES

Quality saw blades at competitive prices are available from SAWS International. Featured are: high-speed steel circular saw blades; segmental circular saw blades; bandsaw blades; carbide-tipped metal cutting blades; and friction/hot saw blades.

For more information, contact: SAWS International, 1206 Kishwaukee St., Rockford, IL 61106; 800/435-7297 or **CIRCLE # 120**

BAND SAWS

Yamazen offers structural band saw machines and CNC structural drilling machines. The saws feature a patented amplifying valve feed system, unique three contact point mitering method, six degree saw bow angle and carbide roller ring back-up guides. The CNC drilling machines features an exclusive "fixed work piece-travelling spindles" method, which allows for faster hole location without repositioning heavy beams and results in greater accuracy.

For more information, contact: Yamazen, Inc., 735 E. Remington Road, Schaumburg, IL 60173; 708/882-8800; fax: 708/882-4270 or **CIRCLE # 131**

USED EQUIPMENT

Structural Steel Systems specializes in buying, selling, leasing and brokering equipment typically found in structural and plate fabricating facilities. Offers technical sales personnel, service staff, remanufacturing of used equipment, retrofits and financing options.

For more information, contact: Structural Steel Systems, 763 Lower Saucon Road, Hellertown,

PA, 18055; 610/838-7338; fax: 610/838-7338 or **CIRCLE # 127**

CUSTOM ROLLING



Acrotech offers custom rolling for a wide range of materials and sizes up to 30-in. in length. The rolling is done on one-pass, two-roll bending machines. These machines roll perforated and die cut materials without marring. The bending is completed in one pass with a minimum of flat length on the leading and trailing ends of the material used.

For more information, contact: Acrotech Inc., P.O. Box 466, Industrial Court North, Lake City, MN 55041; 800/345-0583; fax: 612/345-3759 or **CIRCLE # 112**

FABRICATION MACHINERY

Franklin Manufacturing custom designs, manufactures, and installs machinery ranging from manual control fabrication equipment such as portable hydraulic punches, shears and plate rolls to complete CNC controlled machinery, including angle fabricators, plate fabricators, bus bar fabricators, drill lines, drill centers, and structural fabricators complete with automatic loading and unloading accessories.

For more information, contact: Franklin Manufacturing, Highway 243, Industrial Park, Russellville, AL 35653; 205/332-0143; fax: 205/332-0143 or **CIRCLE # 110**

STAAD3-2D

State-of-the-art 2D Structural Analysis and Design Software for \$595

Research Engineers, Inc. is proud to announce the arrival of STAAD3-2D, the most comprehensive 2D Structural Analysis and Design software in today's industry. STAAD3-2D is the 2D version of RE's world famous structural software STAAD-III. Equipped with powerful Analysis/Design, brilliant GUI, easy Visualization/Verification, and flexible Report/Query facilities, STAAD3-2D represents the true state-of-the-art in modern structural engineering.

STAAD3-2D supports STEEL/CONCRETE/TIMBER design per AISC (ASD & LRFD), ACI and AITC codes. With a price tag of \$595, it offers you the best value for all your 2D structural needs.

Research Engineers, Inc.
22700 Savi Ranch
Yorba Linda, CA 92687
Toll Free: 1-800-FOR-RESE
Fax: (714) 974-4771

StruCAD*3D

The Flagship Product for 3D Structural Analysis & Design

- Pop-Up & Pull-Down Menus
- Truly Interactive 3D Graphics
- Pre- and Postprocessing
- 3D AutoCAD Interface (in & out)
- AISC-ASD, AISC-LRFD, ACI-318
- Reinforced Concrete Design
- Wind & Gravity Load Generation
- Material Takeoff
- P-Delta and Thermal Analysis
- Pile-Soil Interaction
- Seismic & Machine Vibration
- Detailed Fatigue Analysis

Prices start at only \$249

Zentech, Inc. 8582 Katy Freeway, #205, Houston, TX 77024
Tel (713) 984-9171 Fax (713) 984-9175

Structural & Miscellaneous Steel Detailing CAD Programs

AutoCAD parametric LISP programs for preparing structural AND misc. steel shop drawings. All programs have been updated for 1995 and new programs have been added. Anchor bolts to roof opening frames and "everything between". Imperial and metric versions with USA, Canadian and European steel sections. 45-DAY MONEY BACK GUARANTEE. Discounts up to 30%. Buy only what you need. Used in the field for 8 years. Programs written by a detailer with 39 years experience. Extremely "flexible" programs. FREE telephone support. No maintenance fee. Reasonable yearly update fee. EXCELLENT PROGRAMS at a REASONABLE PRICE. Call for a FREE demo disk, list of programs, and prices.

SSDCP

110 Shady Oak Circle, Florence, MS 39073
Tel: 601/845-2146 (fax same)

GT STRUDL

ADINA

Static, Dynamic, Linear, Nonlinear & Pushover Analysis
Straight & Curved Steel Bridge Model & Load Generator

SC Solutions, Inc.

Tel (415) 903-5050

Fax (415) 691-9452

SC-Bridge

SC-Push3D

Comprehensive Review Manuals SE and PE (Civil) License

PE (Civil) six vol. (4200 pp). Calif Structural Engr (SE) five vol. (4170 pp). C.V. Chelapati, Ph.D., Editor. Covers solution techniques with several hundred solved problems. Invaluable reference for PE/SE exams. Highly acclaimed as excellent references for practicing engineers.

Call/write for detailed brochures. PEDP, Inc., 5912 Bolsa Ave., Suite 108-MS, Huntington Beach, CA 92649;

(714) 898-3658; Fax (714) 898-4635

Help Wanted—CHIEF DRAFTSMAN

Needed to start up and run computer detailing room for Florida medium size fabricator. AISC II. Salary negotiable. Good Benefits. Reply to:

Allstate Steel Company, Inc.

Attn: K.W. Suggs

P.O. Box 61148

Jacksonville, Florida 32220

Help Wanted—ESTIMATOR

Aggressive, fast-growing structural steel fabricator needs full charge HEAD ESTIMATOR. This challenging, full-time position requires a minimum of 5 years experience with plan take-offs, detailing & checking, purchasing, and project coordination. Computerized estimating a plus.

Send resume with salary history and requirements to:

CV Fabricators Inc.

P.O. Box 476

Modesto, CA 95353

Attn: Steve Bishop, President

Employment

ProCounsel searches for the right job for you, in the right geography, at the right money. Engineers, architects, draftspersons, detailers, checkers, estimators, plant managers/engineers/supers, erection professionals. Confidential. Fee paid. Buzz Taylor 214-741-3014. Fax: 214-741-3019 or leave a msg: 800-545-5900.

Engineering Journal

The only technical magazine in the U.S. devoted exclusively to the design of steel structures, the *AISC Engineering Journal* provides structural engineers, fabricators, and educators with the latest information on steel design, research and construction.

For a one-year subscription, send \$18 to:

American Institute of Steel Construction,

P.O. Box 806276, Chicago, IL 60680-4124

or phone 312/670-2400

Limited Edition: Selected ASTM Standards

Custom book includes: A570/A570M-95; A572/A 572M-94C; A588/A 588M-94; A606-91a (1993); A607-92A (1993); A618-93; A666-94A; A668/A668M-95; A 673/A 673M-90B; A687-93; A700-90; A709/A709M-94A; A770/A770M-86 (1990); A852/A852M-94; A898/A898M-91; A913/A913M-93; B695-91; F436-93; F 606-95; F959-94A; A6/A6M-95A; A27/A27M-93; A36/A 36M-94; A53-94; A123-89A; A148/A148M-93B; A153-95; A193/A193M-95; A194/A194M-95; A242/A242M-93A; A276-95; A307-94; A325-94; A354-95; A370-94A; A435/A435M-90; A449-93; A490-93; A500-93; A501-93; A514/A514M-94; A529/A529M-94; A563-94; A568/A568M-93A; A283/A283M-93A; A759-85 (1992); A385-80 (1991); A384-76 (1991); A780-93A

Limited copies available for \$175 (\$140 for AISC members). Send check to: LeAnn Schmidt, AISC, One East Wacker Dr., Suite 3100, Chicago, IL 60601-2001.

HEWLETT-PACKARD Computers/Peripherals

A complete line of used and refurbished HP Equipment to fill all your computer needs. Laser printers, scanners, disk drives, plotters (Draftpro, Draftmaster & Designjet), PC's and 9000 series workstations are available for immediate delivery. Call our toll free number for additional information and pricing.

Ted Dasher & Associates
4117 2nd Avenue South
Birmingham, AL 35222
800-638-4833 fax (205) 591-1108

STEEL SHAPING SPECIALISTS

WE CAN BEND STRUCTURAL STEEL: THE EASY WAY, THE HARD WAY, IRREGULAR CURVES, OFFSETS, ELLIPTICAL SHAPES, CIRCLES, SEGEMENTS WITH TANGENTS AND WE CAN BEND IT TO TIGHT RADII WITH MINIMAL DISTORTION.

We also offer forging, the hot shaping of metals and the rolling and forming of tubing, rail and bars. Call or fax Frank Hutterer for more information.

Tel: 414-355-8220 Fax: 414-355-4698
Max Weiss Co., Inc.
8625 W. Bradley Rd., Milwaukee, WI 53224

Structural Expert Series (SES)

A complete library of analysis and design software. This library is based on over 20 years of commercial software experience and is installed in over 2,000 companies throughout the world.

Library includes:

- 3D and 2D analysis
- Steel Design, ASD & LRFD
- Concrete design
- Timber design
- Masonry walls & retaining walls

For more information, or to receive a FREE demo kit, please call.
ECOM Associates, Inc. • 8324 N. Steven • Milwaukee, WI 53223
Ph: 414/365-2100 ext. 494 • Fax: 414/365-2110

Computerized Structural Steel Detailing

Experienced Staff including licensed Professional Engineers with many years of detailing experience. 31 years of service to steel fabricators and contractors.

R.A. Gress & Associates
176 Planebrook Road, Frazier, PA 19355
Ph: (610) 644-3250 Fax (610) 889-4836

Structural Bolting Handbook

Step-by-step instructions for: bolt installation using the turn-of-the-nut, calibrated wrench, twist-off bolt and direct tension indicator methods; pre-installation tests and inspection procedures for each method; dispute arbitration procedures; AASTHO/FHWA rotational capacity test procedures; bolt, nut and washer product and manufacturer identification markings; bolt, nut and washer dimensions; compatibility tables; and discussion of many critical bolting issues.

1-10 copies: \$9.00 ea.; 11-50 copies: \$8.00 ea.;
51+ copies: \$7.00 ea.

For orders under \$75.00, add \$4.00 s&h;
MI residents add 6% sales tax.

Prepayment by check, Visa or Mastercard only.

Steel Structures Technology Center, Inc.,
40612 Village Oaks Dr., Novi, MI 48375-4462
Ph: (810) 344-2910 Fax: (810) 344-2911

New AISC Publications Phone Number

To order any AISC publication, including the *Manual of Steel Construction* or any *Design Guide*, call AISC's new toll-free number: **800/644-2400**.

AISC Professional Membership

Receive a **FREE** *Manual of Steel Construction* and 25% discounts on AISC publications, seminars and the National Steel Construction Conference. In addition, be eligible to serve on AISC Committees.

**For more information, contact:
Libby Kop at 312/670-5409.**

Advertiser	Advertisers' Index Page Number	Circle No.
AISI	insert	15
ATIR Eng. Software	33	28
Nicholas J. Bouras	CII	33
CAST	32	27
CDS	47	63
Cadex Oy	29	107
Carboline	11	26
Chaparral Steel	8	43
Comeq	47	68
Computer Detailing	23	
Computers & Structures	CIV	31
Cooperheat	35	42
Das Consulting	37	82
Design Data	7	32
EJE Industries	23	46
Integrated Eng. Software	24	87
MDX Software	25	47
Metal Stud Systems	32	25
Metrosoft	CIII	51
NSCC	26-27	4
Omnitech	25	52
Optimate	24	53
Ram Analysis	33	41
Research Engineers	5	34
RISA Technologies	34 & 40	40
St. Louis Screw & Bolt	36	36
Steel Joist Institute	22	54
Steel Solutions	insert	98
Steelcad International	14-15	84
TradeARBED	3	35
Max Weiss	12	56
Whitefab	40	55
Zalk Josephs	13	88

Announcing version 3.0,
*incorporating intrinsic ergonomics which will
 catapult you to the next level of productivity.*

ROBOT V6

THE FINEST IN STRUCTURAL ANALYSIS AND DESIGN SOFTWARE

intelligent proactive prompting

We have even thought about details like our **intelligent proactive prompting system** that suggests next user action and displays prompts at the current mouse position to **reduce eye fatigue**, and full implementation of DLL technology allowing for **instantaneous switching** between modules, and choice of **beginner, advanced, and expert** menu levels or **customizable toolbars**, and

Of course ROBOT V6 is **not** a set of separate programs just glued together and adopted to work on PC - it is **written in C++ specifically for the PC platform**, providing a **rich set of features** for structural analysis and design, in one **easy to use** coherent and **ergonomically designed** user interface. **Versatility** of the single program and **fast solvers** combined with the addition of **new algorithms** (Kang's - emitter and wave propagation FEM meshing method) make ROBOT V6 a **powerful, truly interactive** tool, that meets the most **demanding engineer** requirements.

metrosoft
 STRUCTURES, INC.

332 Paterson Ave,
 E. Rutherford, NJ 07073

Please circle # 51



IMAX DOME. DESIGN PRAT

NEW PROMOTIONAL OFFER.
 FOR DETAILS, PLEASE CALL 800-60-ROBOT,
 OR USE FAX BACK SERVICE AT 201-438-2733.

LIMITED WORKING VERSION OF PROGRAM WITH PRE-RECORDED EXAMPLES AVAILABLE. OVER 2000 USERS WORLDWIDE. FOR MORE INFORMATION CALL 201-438-4915 OR FAX TO 201-438-7058

ROBOT V6

Name: _____

Company: _____

Address: _____ City: _____ State: _____ Zip: _____

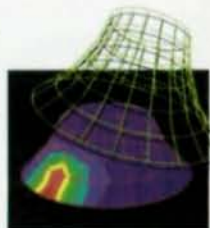
Tel.: _____ Fax: _____

I am: structural engineer, architect, educator, dealer, other: _____

Please have a product specialist call me Please send more information

Please send working demo version (limited to 25 elements and 25 nodes), with recorded macros of real design examples. Enclosed is a check for \$25 (plus applicable Tax in NJ). I have a system equal to or better than 386SX with math coprocessor, 8 MB RAM, 25 MB of free disk space, VGA monitor.

Metrosoft Structures, Inc., 332 Paterson Avenue, E. Rutherford, NJ 07073. Tel 201 438-4915, Fax 201 438-7058.



MSC

STATE OF THE ART

Structural Engineering Software

INTEGRATED ANALYSIS AND DESIGN SOFTWARE FOR STRUCTURAL AND EARTHQUAKE ENGINEERING

Developed by Ashraf Habibullah & Edward L. Wilson



For further information:

Computers & Structures, Inc.
1995 University Avenue
Berkeley, California 94704

TEL: 510/845-2177
FAX: 510/845-4096

Please circle # 31

SAP90®

General Analysis & Design

ETABS®

Building Analysis & Design

SAFE™

Slab Analysis & Design

SAP90 is a registered trademark of Computers & Structures, Inc.
ETABS is a registered trademark of Computers & Structures, Inc.
SAFE is a trademark of Computers & Structures, Inc.
CSI is a registered trademark of Computers & Structures, Inc.
© 1993 Computers & Structures, Inc.