

# 2003 NASCC EXHIBITOR LISTING

## North American Steel Construction Conference

### A-1 DETAILING Booth 1010

10 Pinder Rd  
Nackawic, NB, E6G 1W3  
Canada  
Ph: 506.575.1222  
Fax: 506.575.1223  
www.a1detail.com

A-1 Detailing is an Engineering and Steel Detailing company located in Canada. We offer full-time engineer on staff and full compliment of detailers and checkers with over 40 years combined experience. We hold certifications through NISD and CISC, and are able to provide stamped connection design in several states and provinces. A-1 Detailing has extensive experience in Bulk Material Handling field. We offer overnight shipping to most US points.

### A-PLUS GALVANIZING, INC. Booth 1044

1100 N. Ohio St.  
P.O. Box 2717  
Salina, KS 67401-2717  
Ph: 785.820.9823  
Fax: 785.820.9816  
marilyn@aplusgalv.com  
www.aplusgalv.com



Kettle dimensions of 82' long x 10' wide x 12' deep, A-Plus Galvanizing, Inc. is home of the super kettle—the world's largest hot-dip galvanizing kettle. Large structures such as an 88,000-lb. tower anchor for a cable stayed bridge, an 82' x 10' smoke stack assembly, and 80' utility power poles have now been hot dip galvanized in a single dip. Eighty acres of on-site storage and painting after galvanizing is available.

### ACECAD SOFTWARE, INC. Booth 520

825 Springdale Dr.  
Whiteland Corp. Center  
Exton, PA 19341  
Ph: 610.280.9840  
www.strucad.com

### ADVANCE INFORMATICS Booth 752

D-1070 New Friends Colony  
New Delhi, Delhia  
India 110065  
Ph: +91-11-632-0565  
Toll Free: 800.886.2664  
sanjaya@advanceinformatics.com  
www.cadinformatics.com

### ADVANCED FABRICATING MACHINERY Booth 524

65 Rt. 125  
Kingston, NH 03848  
Ph: 603.382.1476  
Fax: 603.642.4813  
sales@advancedfab.com  
www.advancedfab.com

### ADVANCED METAL TECHNOLOGY (AMTEK, INC.) Booth 526

1406 C Ritchey Ave.  
Santa Ana, CA 92705  
Ph: 714.285.9257  
Fax: 714.285.9258  
thanh@eadinc.net  
www.topcnc.com

Beam coping machines, hand rail machines and measuring devices.

### ALLIED MACHINE AND ENGINEERING CORP. Booth 923

120 Deeds Dr.  
Dover, OH 44622  
Ph: 330.343.4283  
Toll Free: 800.321.5537  
Fax: 330.602.3400  
dgianno@alliedmachine.com  
www.alliedmachine.com

Now available from AMEC: structural steel drilling systems, through tang and shank coolant options, with patent pending blade for thin wall I-beam and steel plate applications. Design allows for better hole tolerance, increased productivity and superior hole quality. Drill diameter range is  $\frac{9}{16}$ "– $1\frac{7}{8}$ ". Thin wall drill insert range is  $\frac{9}{16}$ "– $1\frac{9}{16}$ " (14,29mm–39,69mm). Insert substrate is Super Cobalt HSS, coated with TiAlN. For thicker wall material, structural steel holders will accommodate the standard T-A™ drill insert. A dedicated body diameter ensures increased rigidity and less deflection.

### AMERICAN GALVANIZERS ASSOCIATION Booth 1054

6881 S. Holly Circle, #108  
Centennial, CO 80112  
Ph: 720.554.0900  
Toll Free: 800.468.7732  
Fax: 720.554.0909  
aga@galvanizeit.org  
www.galvanizeit.org

Serving the needs of specifiers, architects, engineers, contractors, and fabricators since 1935, the American Galvanizers Association (AGA) provides information on the most innovative applications and state-of-the-art technological developments in hot-dip galvanizing for corrosion protection. Created to educate and train in the specification and use of hot-dip galvanized steel, the AGA maintains a large technical library, distributes numerous industry publications, offers free educational seminars, and provides toll-free technical support to the specifying community.

### AMERICAN INSTITUTE OF STEEL CONSTRUCTION, INC. Booth 811, 911

One E. Wacker Dr., Ste. 3100  
Chicago, IL 60601-2000  
Ph: 312.670.2400  
Toll Free: 866.ASK.AISC  
Fax: 312.423.4651  
www.aisc.org



What is AISC? Stop by our booth to find out! AISC starts with you—we will discuss Membership specifics and benefits. It is Resources, including our latest Design Guides and *Modern Steel Construction*. AISC is Solutions and Innovative Ideas, and members of the solutions center will be on hand to show you how to achieve them. AISC is Investing in the Future with university education programs such as adopt-a-school. AISC is Connected, and EDI demonstrations will show you the latest information. AISC is Knowledge, with seminar schedules and *Engineering Journal*.

### AMERICAN PUNCH Booth 942

27101 Tungsten Rd.  
Cleveland, OH 44132-2940  
Ph: 216.731.4501  
Toll Free: 800.243.1492  
Fax: 800.261.6270  
punchit@apk.net  
www.americanpunchco.com

American Punch Company makes punches, dies and shear blades for ironworkers, duplicators, angle and beam lines. We carry an extensive inventory of these tools available for immediate shipment. American Punch produces the highest quality tooling, delivered on time, at the lowest prices in the industry.

# 2003 NASCC EXHIBITOR LISTING

## North American Steel Construction Conference

### APPLIED BOLTING TECHNOLOGY Booth 1038

1413 Rockingham Rd.  
Bellows Falls, VT 05101  
Ph: 802.460.3100  
Toll Free: 800.552.1999  
Fax: 802.460.3104  
ccurven@sover.net  
www.appliedbolting.com

SQUIRTER DTIs - made in accordance with ASTM F959 can be installed to the RCSC latest specification. Squirters make installation and inspection virtually feeler-gage free. No more wondering if rows of bolts or connections have been hit up. Just look for the squirt. Squirters allow installers to do their own inspection, reducing rework to virtually zero. Inspectors know by sight which bolts have been tightened and at which point to inspect.

### ARCELOR INTERNATIONAL AMERICA Booth 527

350 Hudson Street  
New York, NY 10014  
Ph: 212.520.7627  
Fax: 212.520.7702  
greg.dephillis@arcelor.com  
georges.axmann@arcelor.com  
www.arcelor.com, www.alc.arcelor.com

Arcelor International America is a leading supplier of steel products to the American markets. Arcelor Group is the world's largest steel manufacturer. Wide range of structural steel shapes from W4x13 to W44x335, including heavies up to W14x730, W36x650 and W40x593.

Comprehensive range of L, C, MC, and Standard shapes (S7 to S24). Largest range of sheet-piles (PZ, CZ, CS, AZ, PU, AS, HZ, combined walls) and full range of H-piles. Special and unique sections, entire metric (European) size range of structural shapes, structural steel grades up to 65 ksi min. yield strength.

### AZTEC GALVANIZING SERVICES Booth 817

1300 S. University Dr., Ste 200  
Fort Worth, TX 76107  
Ph: 817.810.0095  
Fax: 817.336.5354  
cdwilliams@aztecgalvanizing.com  
www.aztecgalvanizing.com

### B.D. STRUCTURAL DESIGN, INC. Booth 1013

1400 Graham Bell, Office 300  
Boucherville, PQ, J4B 6H5  
Canada  
Ph: 450.641.1434  
Fax: 450.449.1772  
dsbd-blierce@bdsd.com

B.D. Structural Design Inc. has been in the technical drafting field since 1974. We specialize in the preparation of erection drawings and the production of shop drawings for steel buildings and also in designing connections. Industrial buildings, complex-geometry buildings, bridges, schools, skyscrapers, pipe racks and refineries are some examples of the projects we have done so far. Since 1993, we have been using SDS/2 software to accomplish these jobs, which are fully CNC compatible.

### BDS STEEL DETAILERS Booth 939

225 E. First Street, Ste. 109  
Mesa, AZ 85201  
Ph: 480.615.1700  
Toll Free: 888.838.1540  
Fax: 480.615.1717  
www.bdsglobal.com

BDS Steel Detailers is the largest steel detailing company in the world and also the largest X-steel user in the world. With over 35 years of experience in virtually all types of structures and with 135 production detailers BDS is considered to be a world leader in steel detailing.

### BEHRINGER SAWS, INC. Booth 325

721 Hemlock Rd.  
Morgantown, PA 19543  
Ph: 610.286.9777  
Toll Free: 888.234.7464  
Fax: 610.286.9699  
sawing@behringersaws.com  
www.behringersaws.com

Behringer Saws, Inc. offers three product lines of high quality, heavy-duty production oriented machines. The Behringer product line consists of horizontal bandsaws, vertical plate saws and power hacksaws - 143 different models to choose from. The Behringer Eisele product line offers 28 different models of manual, semi-automatic, automatic and CNC circular cold saws. The Vernet Behringer product line consists of portable punching units, CNC structural multi-axis drills, angle lines, beam lines and beam-coping lines.

### BENDTEC, INC. Booth 726

366 Garfield Ave.  
Duluth, MN 55802  
Ph: 218.722.0205  
Fax: 218.722.6598  
wendy@bendtec.com  
www.bendtec.com

BendTec is a leader in bending and fabrication for projects involving curved architectural and structural members. AISC-Certified for conventional steel building structures, simple steel bridges, complex steel building structures and major steel bridges. Products



include roof trusses, parabolic arches, viendell trusses, long radius bends, light/power poles, signs, bridge arches, park benches and window mullions.

### BIRMINGHAM FASTENER, INC. Booth 943

1100 Main St. SE  
Hanceville, AL 35077  
Ph: 256.352.1000  
Toll Free: 866.215.2010  
Fax: 256.352.5077  
www.bhamfast.com

Birmingham Fastener, Inc. was founded in 1980. Since then we have expanded to different locations spanning from Greenville, SC to Dallas, TX. In March of 2002 we celebrated the grand opening of our 120,000-sq.-ft Distribution Center located in Hanceville, AL. Our in-house engineering and testing lab insures quality control and tractability. We distribute from a warehouse with over \$6 million in finished goods.

We operate two manufacturing facilities located in Birmingham, AL and Nashville, TN. We manufacture custom orders according to each customer's drawings and/or specifications. This includes hot and cold forming and specialty threaded products.

### BUG-O SYSTEMS, INC. Booth 756

3001 W. Carson St.  
Pittsburgh, PA 15204  
Ph: 412.331.1776  
Toll Free: 800.245.3186  
Fax: 412.331.0383  
ecelesti@weld.com  
www.bugo.com

Bug-O systems, manufacturer of welding and cutting automation, will display its newest innovations for increasing productivity; Beam-Bug, a portable oxy-fuel beam-cutting machine that can miter, bevel and square-cut angle, channel and I-Beams. Programmable Shape Machine, a portable two-axis programmable shape-burning machine used to cut shapes, slots and cope structural steel. The Uni-Bug is an automatic welding or cutting tractor that can be used to split or weld beams.

# 2003 NASCC EXHIBITOR LISTING

## North American Steel Construction Conference

### **BULL MOOSE TUBE COMPANY** Booth 829

1819 Clarkson Rd., #100  
Chesterfield, MO 63017  
Ph: 636.537.2600  
Toll Free: 800.325.4467  
Fax: 636.537.5848  
www.bullmoosetube.com

Bull Moose Tube produces as-welded mechanical tube, HSS and sprinkler pipe in sizes ranging from 1/2"- to 12"-square by 5/8" wall from six facilities across North America. Bull Moose Tubes use the direct form method to produce HSS. It allows tighter tolerances on twist straightness, concavity and convexity. Direct form also allows deep rectangles rarely manufactured in the industry and extra-high strength tubing with 100ksi yield strength.

### **CADS-USA, INC.** Booth 1027

268 W. Beaver St., Ste. 108  
Hallam, PA 17406  
Ph: 717.757.2025  
Toll Free: 800.470.4566  
Fax: 717.757.7095  
dolphin@cadusa.com  
www.cadusa.com

### **CALLAWAY & NELSON STEEL DETAILING** Booth 1014

P.O. Box 64268  
Lubbock, TX 79464  
Ph: 806.794.7667  
Fax: 806.794.1432  
mn@callawaynelson.com  
www.callawaynelson.com

Steel detailing for aircraft hangers/airport terminal buildings, chemical plants/refineries, school complexes, commercial (shopping and office) complexes, high-rise/multi-story steel buildings, industrial (factories, warehouses) complexes, marine/offshore structures, mining (chutes, hoppers, conveyors gantries, trestles) structures, power generation complexes, stadium/sports complexes, steel and composite bridges, transmission/ communication towers, transportation mono-rail.

### **CAMBCO, INC.** Booth 742

P.O. Box 37305  
Houston, TX 77237-7305  
Ph: 713.781.9702  
Fax: 713.781.0193  
bob@cambcoinc.com  
www.cambcoinc.com

CAMBCO, Inc., the original Cambering Machine—since 1984, now offers eight cambering machine models. Four new versions (Models 520, 825, 1170 and 1700), which provide 25% additional cambering capacity at only 12% additional cost, have recently been added

### **CAMBCO, Inc.**



to the four basic machines (Models 420, 700, 1000 and 1400). The very economical Model 420 will camber Grade 50 beams as large as a W30x116 and the Model 1700 will camber a W40x397. Conveyorizing versions are also available, and all may be purchased as complete machines or as "Do-it-yourself" kits.

### **CANAM STEEL CORPORATION** Booth 705

4010 Clay St.  
P.O. Box 285-C  
Point of Rocks, MD 21777  
Ph: 301.874.5141  
Fax: 301.874.5685  
jasmin\_gosselin@canammanac.com  
www.canamsteel.com

One of North America's largest manufacturers of first-quality steel joists, specialty joist products and engineering expertise, including girders, purlins and girts, and steel deck, at six plants across the United States. Product includes services of seasoned professionals to provide value-engineering expertise to lighten steel product and cut costs; detailing services; and Steel Plus Network, a network of fabricators providing solutions to business management challenges in the steel industry.

### **CARBOLINE CO.** Booth 929

350 Hanley Industrial Ct.  
St. Louis, MO 63144  
Ph: 314.644.1000  
Toll Free: 800.848.4645  
Fax: 314.644.2246  
robin\_frye@carboline.com  
www.carboline.com

Carboline utilizes its comprehensive line of high-performance coatings and fire protection materials to engineer coating systems to fit nearly any need. Carboline will showcase its growing line of products that takes corrosion protection and painting to a new level.

### **CERBACO, LTD.** Booth 938

809 Harrison St.  
Frenchtown, NJ 08825  
Ph: 908.996.1333  
Fax: 908.996.0023  
keithmcclean@cerbaco.com  
www.cerbaco.com

Cerbaco will show samples of its line of 500+ configurations of non-metallic weld back-

ings that permit finished-quality, full-penetration welds from one side. For use with structural steel, shipbuilding, pipeline, pressure vessel and tank manufacturing. The backings work with MIG, TIG, stick electrode, sub-arc and flux-core welding processes to weld carbon and alloy steel, stainless steel, non-ferrous metals and aluminum. Where one-sided welding is not desirable, the backings eliminate the need for arc gouging or heavy grinding prior to second-side welding. The company specializes in furnishing custom configurations and formulations. Technical assistance and free custom design services will be offered.

### **CHALLMAN & COMPANY** Booth 628

2900 14th Ave. S  
Minneapolis, MN 55407  
Ph: 612.722.7575  
Fax: 612.722.5255

Challman and Company has supplied the construction industry with anchor bolts for over 100 years. Anchor Bolts (straight, bent, forged ends) tie rods, eye bolts, spade bolts, U-bolts and J-bolts are our specialty. We can thread, bend and forge from 3/8" to 2 3/4" round in any alloy steel, stainless and hot dipped galvanized. We can cut, bend and thread to any length and supply hex nuts, washers, plate washers and anchor plates.

### **CHICAGO METAL ROLLED PRODUCTS** Booth 727

3715 S. Rockwell  
Chicago, IL 60632  
Ph: 773.523.5757  
Toll Free: 800.798.4504  
Fax: 773.650.1439  
sales@cmrp.com  
www.cmrp.com



Roll-curving of structural steel, sheet and plate to a specified radius. Angles, bars, beams, channels, rail, pipe, and tees—all curved on 50 specialized rolling machines. Three-day, two-day, one-day, or same-day service. The world's largest bending machines roll up to W44 x 295# beams both the 'easy way' and the 'hard way,' as well as pipes up to 20" diameter. Also, curved stair stringers, helical handrails, ellipses, and off-axis bends.



# 2003 NASCC EXHIBITOR LISTING

## North American Steel Construction Conference

### CIS/2 INTERACTIVE

#### Booth 805

One E. Wacker Dr.  
Chicago, IL 60601  
Ph: 312.670.5431  
Fax: 312.670.5403  
coleman@aisc.org  
www.ais.org/edi.html



Do you CIS/2? Have you heard the hype about structural steel's latest technology but never experienced it first hand? AISC presents a live, hands-on workshop of CIS/2 data interchange, also known as CIMSteel. Participants will be guided through the development of a 3D model in one of a number of CIS/2-enabled software applications. Experts will then lead participants in an electronic model exchange, demonstrating the speed, accuracy, and cost serving of CIS/2. Workshop participants will earn a special prize and be entered into a raffle to win a free copy of CIS/2-enabled software application.

### COMEQ, INC.

#### Booth 115

10521 Industrial Park E. Rd.  
White Marsh, MD 21162  
Ph: 410.933.8500  
Fax: 410.933.1600  
donl@comeq.com  
www.comeq.com

If layout time and template preparation are costing you money—Visit COMEQ, Inc. at the NASCC to see how you can increase your production, increase your accuracy and reduce the high cost of inventory. Shown will be a GEKA Hydracrop Ironworker with Model Semi Paxy X-Y Table with a 20" x 40" table size. Using an easy-to-operate Fagor CNC controller to enter the hole coordinates, the X and Y stops move, the operator holds the part against the stop, punches the hole, and then the X and Y stops move to the next position. This unit can be used for plate, angle and channel punching.

### COMPUTERS AND STRUCTURES, INC.

#### Booth 857

1995 University Ave., Ste. 540  
Berkeley, CA 94704  
Ph: 510.845.2177  
Fax: 510.845.4096  
info@csiberkeley.com  
www.csiberkeley.com

Computers and Structures, Inc. specializes in structural and earthquake engineering software. The products offered by CSI (SAP2000, ETABS and SAFE) cover a wide range of structural applications, from highrise buildings to multi-use one- and two-story structures (industrial structures, hospitals), from bridges (suspension and cable stayed bridges, multi-span bridges) to transmission towers. For nearly three decades, CSI software has been used for

the analysis and design of major projects in over 100 countries.

### CONSOLIDATED SYSTEMS, INC.

#### Booth 1021

650 Rosewood Dr.  
Columbia, SC 29201  
Ph: 803.251.5051  
Toll Free: 800.554.5421  
Fax: 803.799.6811  
eric.jacobson@csisteel.com  
www.csisteel.com

With 50 years of service to the construction industry, the CSI Metal Dek Group offers one of the most complete lines of roof, floor and form decks in the industry. Our specialty deck product lines include Versa-Dek and Deep-Dek for your unique flooring and roofing needs. We also offer specialty options that include coil-coating systems and cellular acoustic capabilities. Our design team works with you as value engineers, ensuring you get exactly what you need both on time and within budget. Let us support your challenging and unique design and construction needs.

### CONTROLLED AUTOMATION

#### Booth 505

15701 W. Sardis Rd.  
Bauxite, AR 72011  
Ph: 501.557.5109  
Fax: 501.557.5618  
shane@controlledautomation.com  
www.controlledautomation.com

Controlled Automation, Inc. was established in 1986 and is a manufacturer of Angle Punch Lines, Beam Punch Lines, Drill Lines, Plate Burning and Punching machines, Material Handling Conveyors, CNC controls, and complete fabrication systems. All new machines and controls are manufactured in their entirety in our shops in Bryant, AR. In addition to new machinery, we also have one of the largest rebuild and retrofit shops in the country, and offer packages for Angle Lines, Beam Lines, Drill Lines and Burning Tables. We are the single-source company for service, electronics, software, and design for the steel fabricator.

### COREBRACE, LLC

#### Booth 814

5955 W. Wells Park Rd.  
West Jordan, UT 84088  
Ph: 801.280.0701  
Fax: 801.280.3460  
www.corebrace.com

### COPPERWELD

#### Booth 827

1855 E. 122 St.  
Chicago, IL 60633  
Ph: 773.646.4500  
Toll Free: 877.679.5923  
Fax: 773.646.6128  
ewolf@ltv-copperweld.com  
www.copperweld.com

### COSEN SAWS, USA

#### Booth 421

4205 Pleasant Rd.  
Fort Mill, SC 29708  
Ph: 803.547.4720  
Fax: 803.547.4748  
info@cosen.com  
www.cosen.com

Cosen Saws, USA, a ISO 9001:1994, EMC and CE Certified manufacturer of Bandsawing Machine, has over 27 years of manufacturing excellence. Cosen Saws offers over 15 models specifically geared for the structural market. With capacities from 13" to 59," with single and double mitering available to 60 degrees, Cosen Saws has the perfect match for any structural cutting need. Cosen also excels at odd application cutting and problem solving through specially built machines. If you need to cut it, 'Cut it on a Cosen,' 'The Pinnacle of Cutting Performance.'

### D & M DRAFTING COMPANY, INC.

#### Booth 1017

420 Bearden Rd  
Knoxville, TN 37919  
Ph: 865.584.7999  
Fax: 865.584.9161  
dmdraft@bellsouth.net  
www.dmdraft@bellsouth.net

D & M Drafting Company, Inc. is a full service detailing company that specializes in structural, miscellaneous and bridge detailing. Our sister company, Technical Engineering Consultants, PC (TEC) is a full-service structural engineering and consulting firm. Their services include structural design and drafting for all types of structures, including connection design services for detailers and fabricators. Together with fabricators we can produce design-built projects.

# 2003 NASCC EXHIBITOR LISTING

## North American Steel Construction Conference

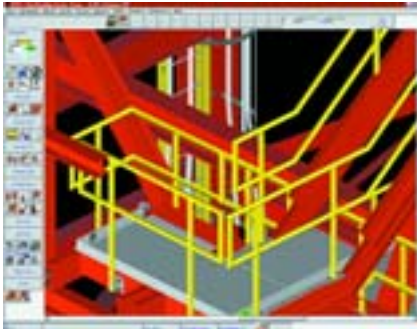
### **DAITO USA, INC.** Booth 404

1470 Elmhurst Rd.  
Elk Grove Village, IL 60007  
Ph: 847.437.6788  
Fax: 847.437.6789

Daito, known for innovative engineering, uncompromising commitment to quality and superb customer service, produces a full line of CNC Drilling and sawing machines for structural steel fabricators. Daito is proud to introduce new technology at this year's NASCC exhibit in our new drill/saw cell with the revolutionary CSDII 1050 carbide CNC drill. Experience a surprising new dimension in productivity with the world's fastest drill for structural shapes. See true simultaneous drilling and sawing with a tandem system.

### **DESIGN DATA SDS/2** Booth 735

1501 Old Cheney Rd.  
Lincoln, NE 68512  
Ph: 402.441.4000  
Toll Free: 800.443.0782  
Fax: 402.441.4045  
www.sds2.com



Design Data has more than 20 years experience developing its premier SDS/2 steel software. The SDS/2 software family brings every phase of steel engineering and detailing together in one completely integrated solution. Individually, the Design and Detailing modules offer great productivity gains. Integrated together and combined with the Global Review Module, they eliminate redundancies and strengthen the relationship you have between departments and with other steel partners.

### **DETAILCAD** Booth 926

P.O. Box 2008  
Whitefish, MT 59937  
Ph: 406.862.7906  
Fax: 406.862.0361  
david@detailcad.com  
www.detailcad.com

### **DETAILED DESIGN DRAFTING SERVICES, LTD.** Booth 623

198 E. Island Hwy, Ste. 220  
P.O. Box 740  
Parksville, BC, V9P 2G7  
Canada  
Ph: 250.248.4871  
Fax: 250.248.4826  
josmond@detailledesign.com  
www.detailledesign.com

### **DOWCO CONSULTANTS LTD.** Booth 621

2433 Holdom Ave.  
Burnaby, BC, V5B 5A1  
Canada  
Ph: 604.606.5800  
Fax: 604.606.5818  
edobbie@dowco.com  
www.dowco.com

Founded in 1970, Dowco is one of the largest fully automated steel detailing companies in the world. Dowco serves local, regional, national and international markets. Our goal is to provide structural steel detailing services conforming fully to customer specifications and requirements. Detailing done fast, accurately and affordably. No job is too small or too large.

Visit our booth to learn more about:

- Dowco's Detailing Services
- Tekla Xsteel, the world leading 3D Detailing software (Dowco are authorized Tekla Xsteel resellers)
- Dowco's 10-week, full-time Steel Detailing Training School.

### **ESAB WELDING AND CUTTING PRODUCTS** Booth 429

411 S Ebenezer Rd.  
Florence, SC 29501-0545  
Ph: 843.664.5575  
bbitxky@esab.com  
www.esabna.com

### **FABTROL SYSTEMS, INC.** Booth 953

132 E. Broadway, Ste. 636  
Eugene, OR 97401  
Ph: 541.485.4719  
Toll Free: 888.FABTROL  
Fax: 541.485.4302  
www.fabtrol.com

FabTrol is a fully integrated software solution for steel fabricators. Its major functions include estimating, drawing management, material management (material nesting, purchasing, and stock control), production management (routing, batching, and progress tracking), shipping, and links to CAD, CNC, and accounting software. FabTrol is scalable to meet the needs of large and small shops, and features a true Windows interface for easier

learning. Come to our booth for a demo, or drop by AISC's CIS/2 Interactive! exhibit to see how easily fabrication data can flow from detailing systems such as Xsteel, SDS/2, and StruCAD into FabTrol using the new CIS/2 data exchange standard.

### **FEIN POWER TOOLS** Booth 810

1030 Alcon St.  
Pittsburgh, PA 15220  
Ph: 412.922.8886  
Toll Free: 800.441.9878  
Fax: 412.922.8767  
www.feinus.com

### **FICEP CORPORATION** Booth 324

2301 Industry Ct.  
Forest Hill, MD 21050  
Ph: 410.588.5800  
Fax: 410.588.5900  
www.ficepcorp.com

Ficep Corporation is the North American subsidiary of Ficep S. p. A. established in fall 2002. The introduction of the Ficep product line gives North American fabricators the chance to evaluate the largest line of structural steel and plate-fabricating systems in the world. For CNC-controlled structural steel drilling lines, Ficep offers 21 models to accommodate applications with cost-effective solutions. Diverse products also include the Ficep angle lines, plate systems, saws and coping systems.

### **FISHER & LUDLOW** Booth 744

River Road, Box 401  
McKees Rocks, PA 15136  
Ph: 412.771.1500  
Toll Free: 800.334.2047  
Fa: 412.771.1515  
www.fisherludlow.com

Fisher & Ludlow is a full-line manufacturer of bar grating and expanded metal. Convenient service is available from seven locations in the USA and Canada. Products include bar grating, heavy duty and stainless grating, aluminum grating, grip span and shur grip safety grating, fiberglass and expanded metal.

# 2003 NASCC EXHIBITOR LISTING

## North American Steel Construction Conference

### FRANKLIN MANUFACTURING, INC.

Booth 204

15825 Industrial Park  
P.O. Box 998  
Russellville, AL 35653  
Ph: 256.332.6654  
Fax: 256.332.0143  
jeffharbin@fmi-solutions.com  
www.franklinmanufacturing.com



Franklin Manufacturing, Inc., has been a worldwide supplier of high-quality CNC fabricating systems for more than 25 years. Franklin provides total solutions with its standard product line of CNC fabricating machines. Franklin's CNC equipment is used in markets worldwide, including pre-engineered steel buildings, heavy structural fabrication and joist fabrication. Franklin's CNC product line includes: PF196x72 Plasma/Punch Plate Fabricators, BL-100-5(5-Press) Beam Lines, HD-145 Structural Drills, AFC5108 CNC Angle Lines, Plate Duplicators and Engineered Material Handling Systems. Franklin also manufactures portable presses and shears, with more than 150 units in stock.

### GIRDER-SLAB TECHNOLOGIES, LLC

Booth 940

P.O. Box 4126  
Cherry Hill, NJ 08034  
Ph: 856.424.7880  
Toll Free: 888.478.1100  
Fax: 856.424.6880  
www.girder-slab.com

The Girder-Slab™ system is a composite steel and precast-concrete assembly designed for use in mid to high-rise residential structures. The new system incorporates a special steel girder known as an open-web dissymmetric beam (or D-Beam™) supporting precast hollow-core concrete slabs grouted in place to form a composite assembly. According to Daniel G. Fisher, Marketing and Sales Manager for Girder-Slab Technologies, the system is a technology breakthrough for multi-story residential projects.

### GWY, INC.

Booth 619

217 Forest Rd  
P.O. Box 293  
Greenfield, NH 03047  
Ph: 603.547.3800  
Fax: 603.547.3801  
gwynne@gwyinc.mv.com  
www.gwyinc.com

### HAYDON BOLTS, INC.

Booth 1035

1181 Unity St.  
Philadelphia, PA 19124-3196  
Ph: 215.537.8700  
Fax: 215.537.5569  
mcfriel@haydonbolts.com  
www.haydonbolts.com

We are a major manufacturer and distributor of all types of structural fasteners, including A325-1, A325-3, A490-1, A490-3, A449 & A354. We carry a full line of TC Bolts in F1552 (A325) and A490. All products are offered plain, hot dip galvanized, mechanically galvanized and in weathering steel. Haydon manufacturers anchor rods, tie rods, turnbuckle assemblies and other specials, 1/2" to 4" diameter in any length. We carry a full line of electric tools for both hex structural and TC bolt installation. We supply both domestic and imported product with full material certifications on all products. We perform in-house ro-cap tests and supply product for many DOT projects.



### HECKMANN BUILDING PRODUCTS, INC.

Booth 750

1501 N. 31st Ave.  
Melrose Park, IL 60160  
Ph: 800.621.4140  
www.heckmannbuildingprods.com

Manufacturers of masonry anchors and ties since 1923. Introducing the New Groutless Wall Anchor for attaching joist girders to masonry walls. Also displaying anchors for masonry to structural steel, column anchors, brick veneer anchoring systems, weld-on anchors, and channel slot systems.

### HLM CONSTRUCTION CORP

Booth 754

31 W. 335 Schoger Dr.  
Naperville, IL 60564  
Ph: 630.898.6006  
Fax: 630.898.6014  
bmcwherter@hlmsteel.com  
www.hlmsteel.com

HLM is a full service structural and miscellaneous steel fabrication and erection business, specializing in design-build projects. HLM will work hand-in-hand with developers, architects and engineers, designing and developing cost-effective solutions. HLM's technology allows it to mobilize on site anywhere in the U.S. State-of-the-art detailing, processing and service has made HLM an industry leader.

### HOUGEN MANUFACTURING, INC.

Booth 609

3001 Hougen Drive  
Swartz Creek, MI 48473  
Ph: 810.635.7111  
Fax: 810.635.8277  
d.jones@hougen.com  
www.hougen.com

Hougen Manufacturing introduces the HMD150 Portable Magnetic Drill. The drill's low profile fits in places where even hand-held drills can't go, yet incorporates the power to cut holes up to 1 3/8" diameter thru 1" thick, up to three times faster than conventional drills.

Hougen also is exhibiting 11 other portable magnetic drills, with hole capacities to 3 1/16" diameter and 3" D.O.C., plus a wide range of annular cutter series for a variety of applications and Punch-Pro™ Portable Electro-hydraulic Hole Punchers.

### HYD-MECH SAWS

Booth 222

1079 Parkinson Rd.  
Woodstock, ON, N4S 8A4  
Canada  
Ph: 519.539.6341  
Toll Free: 877.276.7297  
Fax: 519.539.5126  
info@hydmech.com  
www.hydmech.com

# 2003 NASCC EXHIBITOR LISTING

## North American Steel Construction Conference

### **ICAD** Booth 1011

39899 Balentine Dr., #185  
Newark, CA 94560  
Ph: 510.661.2000  
Fax: 510.661.2001  
www.icadsoft.com

At iCAD, we specialize in providing structural steel and rebar detailing services for a range of industrial, commercial and residential services. Detailing service includes preparing of shop drawings, erection plans, ABMs, field and shop bolt lists and material summaries. Rebar detailing includes bar-bending schedules and BOMs. We implement a thorough inward and outward quality system with an experienced staff of checkers. Tools: AutoCAD & Xsteel.

### **INFRA-METALS CO.** Booth 425

580 Middletown Blvd., Ste. D-100  
Langhorne, PA 19047  
Ph: 215.741.1000  
Toll Free: 800.899.3432  
Fax: 215.741.3973  
www.infra-metals.com

Inra-Metals is one of the largest structural steel service centers in the United States. We are well positioned to satisfy your needs with locations in New England, the Mid-Atlantic, the Southeast, the Midwest and Florida. As part of the PNA Group, Infra-Metals is provided with secure financing and a strong commitment to steel distribution and processing. In addition, we offer unparalleled service with on-time delivery and a substantial lineup of processing equipment throughout our various locations.

### **INSTITUTE OF THE IRON- WORKING INDUSTRY** Booth 746

1750 New York Ave. N.W.  
Washington, DC 20006  
Ph: 202.783.3998  
Fax: 202.393.1507  
www.instituteiw.org

A joint labor-management program dedicated to promote the safety, performance, competitiveness and image of the "The Union Erection Industry."

### **INTEGRATED STRUCTURAL SOFTWARE INC.** Booth 921

155 Dorchester  
San Francisco, CA 94127  
Ph: 813.979.4678  
Toll Free: 888.477.8491  
Fax: 813.632.3099  
www.robot-structures.com

Integrated and complete solution from structural analysis and design to detailing drawings. ROBOT Millennium for Finite Element structural analysis and design performs static/dynamic analysis of 2D/3D projects.



Effective tool to compare alternate steel designs. Includes advanced analysis harmonic, seismic, linear/non-linear time-history, non-linear with true cables, P-Delta. RCAD Steel for modeling and detailing of steel structures under AutoCAD. Includes 2D/3D modeling, 3D views, connection design, detailed shop drawings, bill of quantities.

### **ITW - HOBART BROTHERS** Booth 1049

400 Trade Square E  
Troy, OH 45373  
Ph: 937.332.4000  
Fax: 937.332.5224  
debbie.doench@hobartbrothers.com  
www.hobartbrothers.com

### **J. B. LONG INC.** Booth 1015

110 W. Arch St., #214  
Fleetwood, PA 19522  
Ph: 610.944.8840  
Fax: 610.944.0789  
jim@jblong.com  
www.jblong.com

J.B. Long, Inc. has supplied quality structural steel and misc. iron details to the fabrication industry for more than 17 years. Our firm is certified under the NISD Quality Procedures Program. Twelve detailers of our staff of 21 are certified under the NISD Individual Detailer Certification program. We primarily use Steel-Logic (an AutoCAD based detailing package) and Xsteel to create our details. Don't hesitate to contact us to detail your project. We focus on small commercial projects under 300 tons while not precluding the occasional larger job.

### **JLG INDUSTRIES** Booth 839

13224 Fountainhead Plaza  
Hagerstown, MD 21742  
Ph: 240.420.8726  
Toll Free: 877.JLGLIFT  
Fax: 240.420.8733  
www.jlg.com

JLG Industries, Inc. is the world's leading producer of mobile aerial work platforms and accessories. Featured at NASCC will be the JLG SkyWelder™ Package—A 250-amp Miller® CST™ 250 is tucked into the SkyPower™ boom

platform. The SkyWelder conserves space and provides stick and TIG capability.

### **JOBBER INSTRUMENTS CALCULATOR COMPANY** Booth 841

1211 Douglass Ln.  
Sevierville, TN 37876  
Ph: 865.428.6517  
Toll Free: 800.635.1339  
Ph: 865.453.0202  
jobber@jobbercalculator.com  
www.jobbercalculator.com



Jobber Instruments introduces the JOBBER 6™ construction calculator. It is the most advanced builders' calculator ever developed, the perfect tool for those who work with dimensions of all kinds. It is filled with new features that detailers, fabricators and engineers have requested. We also offer a construction math software program and a new desktop calculator holder. Please visit our booth and website.

### **KALTENBACH, INC.** Booth 312

6775 Inwood Dr.  
Columbus, IN 47201  
Ph: 812.342.4471  
Toll Free: 800.825.5729  
Fax: 812.342.2336  
www.kaltenbachusa.com

Kaltenbach manufactures circular cold saws, bandsaws and structural fabrication equipment, including CNC drilling machines, plate processing centers, coping machines, and punch/shear lines.

### **KTA-TATOR, INC.** Booth 946

115 Technology Dr.  
Pittsburgh, PA 15275  
Ph: 412.788.1300  
Toll Free: 800.245.6379  
Fax: 412.788.1306  
www.kta.com

KTA-Tator, Inc. is a consulting engineering firm specializing in protective coatings and linings. KTA provides a full range of coatings and corrosion-related services to the steel construction industry. Services include complete QA/QC shop and field coatings and weld inspection; coatings evaluation; failure analysis; specification preparation/review; facility surveys; in-house lab testing (analytical and physical); lead paint management; environmental, health, and safety consulting; and training.

# 2003 NASCC EXHIBITOR LISTING

## North American Steel Construction Conference

### **KOTTLER METAL PRODUCTS** Booth 947

1595 Lost Nation Rd.  
Cleveland, OH 44094  
Ph: 440.946.7473  
Fax: 440.946.7655

### **KUBES STEEL LIMITED** Booth 843

930 Arvin Ave.  
Stoney Creek, ON, L8E 5Y8  
Canada  
Ph: 905.643.1229  
Toll Free: 877.327.8357  
Fax: 905.643.4003  
www.kubesteel.com

We are Canada's structural and section rolling specialists. The capabilities of our seven machines range from the manufacture of machined-quality seal rings, to rolling 36" beams on the massive Roundo R13s. In-house export expertise and proximity to the U.S. border assure no-hassle service to our U.S. customers. Quality craftsmanship, North American free trade and favorable Canadian exchange rates strengthen our competitive edge.

### **LEJEUNE BOLT CO.** Booth 928

3500 W. Hwy 13  
Burnsville, MN 55337-1795  
Ph/Toll Free: 800.872.2658  
Fax: 952.890.3544  
lbyrd@lejeunebolt.com  
www.lejeunebolt.com

LeJeune has been a leader in structural bolting and tension-control fasteners for 26 years. Their reputation is built on quality products and unparalleled service to the structural steel industry. LeJeune is committed to supporting its customers from contract review and quotation, to bolt installation and beyond. LeJeune is single source for all structural bolt and fastening needs, including tool sales, tool rental and spare parts.

### **LINCOLN ELECTRIC** Booth 944

22801 St. Clair Ave.  
Cleveland, OH 44117  
Ph: 216.481.8100  
Toll Free: 888.921.9353  
Fax: 216.486.1751  
www.lincolnelectric.com

The Lincoln Electric Company is a world leader in arc-welding products, including equipment, consumables, robotic welding systems, fume-extraction systems, and plasma and oxy-fuel cutting equipment. With more than 100 years in the industry, Lincoln Electric has a reputation for quality products, cutting-edge technology, and exemplary customer service. Technical representatives are available globally to provide customers with innovative solutions to welding challenges.

### **LINDAPTER** NORTH AMERICA, INC. Booth 721

3924A Varsity Dr.  
Ann Arbor, MI 48108  
Ph: 734.677.2305  
Toll Free: 888.724.2323  
Fax: 734.677.2339  
lindaptr@ic.net  
www.lindapter.com

Lindapter provides a pre-engineered structural steel clamping system that enables the user to connect secondary steel to primary, without the need to site drill or weld. Featuring published load tables with safety factor of 5:1.

### **LOHR STRUCTURAL** FASTENERS, INC. Booth 405

2355 Wilson Rd.  
Humble, TX 77396  
Ph: 281.446.6766  
Toll Free: 800.782.4544  
Fax: 281.446.7805  
info@lohr-fasteners.com  
www.lohrfasteners.com

Lohr Fasteners is leading the [R]EVOLUTION in Tension Control Fastening System. The SMARTHEX™ combines the structural integrity of our original large-head rivet tension-control bolt with the familiarity and versatility of a traditional hex—the best of both worlds. Visit our booth to see the new LOHR SMARTHEX.

### **LOVEMAN STEEL** Booth 626.

5455 Perkins Road  
Bedford, OH 44146  
Ph: 440.232.6200  
Toll Free: 800.LOVEMAN  
Fax: 440.232.0914  
www.lovemansteel.com

Loveman Steel will be showing its capacities burning heavy plate 20 inch thick, fabricating heavy plate structures weighing up to 120,000 lbs., shipping by truck or rail.

### **MAPLE MACHINE SERVICE** Booth 941

1820 E. Maple  
Kankakee, IL 60901  
Ph: 815.937.5757  
Fax: 815.937.5833  
maplemachine@directvinternet.com  
www.maplemachine.net

Service and sales of new & used equipment for steel fabrication industry.

### **MAVERICK TUBE** CORPORATION Booth 625

16401 Swingley Ridge Rd., Ste 700  
Chesterfield, MO 63017  
Ph: 636.733.1600  
Toll Free: 800.840.TUBE  
Fax: 636.733.1677  
jgrubb@maverick-tube.com  
www.maverick-tube.com

Maverick manufactures HSS in shapes and rounds at our facility in Blytheville, AR. We produce square tubing from 1½" x 1½" through 12" x 12", and equivalent rectangles in walls from .125" to .500". We certify quality and conformance to the latest revisions of ASTM A500 grades A, B, and C. Maverick's structural tubing is inspected and tested throughout the manufacturing process, including non-destructive testing of the weld zone.

### **MIDWEST UNLIMITED** Booth 826

1000 Oak St.  
Lincoln, NE 68521  
Ph: 402.434.5446  
Toll Free: 800.927.2170  
Fax: 402.434.5449  
mike.fergus@midwestunlimited.com  
www.midwestunlimited.com

Midwest Unlimited is a leading supplier of ironworker gear, fall protection, rigging and tools. With more than 50 years as a safety and supply house, Midwest Unlimited offers products and services to ironworkers nationwide. Products from leading manufactures like Crosby, Lift-all, Klein and Elk River at competitive prices. Centrally located with same-day shipping, we are prepared to handle all your ironworker needs.

### **NATIONAL COMMISSION FOR** THE CERTIFICATION OF CRANE OPERATORS Booth 1058

2750 Prosperity Ave., Ste. 505  
Fairfax, VA 22031  
Ph: 703.560.2391  
Fax: 703.560.2392  
www.nccco.org

The National Commission for the Certification of Crane Operators (CCO) provides an industry-developed, thorough and independent assessment of operator knowledge and skill. CCO aims to enhance lifting equipment safety, reduce workplace risk, improve performance records, stimulate training, and give due recognition to the professional skill of crane operation.



# 2003 NASCC EXHIBITOR LISTING

## North American Steel Construction Conference

### **NATIONAL COUNCIL OF STRUCTURAL ENGINEERS ASSOCIATIONS**

**Booth 1055**

203 N. Wabash Ave., Ste. 2010  
Chicago, IL 60601  
Ph: 312.372.8035  
Fax: 312.372.5673  
www.ncsea.com

NCSEA addresses professional, technical, and practice issues important to structural engineers and provides an identifiable resource for those needing communication with the profession. NCSEA programs and activities include the publication of STRUCTURE magazine, participation in the development of building codes (ICC and NFPA), and Structural Engineers Emergency Response Plan. In addition NCSEA conducts its Awards in Structural Engineering Excellence annually, recognizing the top structural engineering projects in the country.

### **NATIONAL INSTITUTE OF STEEL DETAILING, INC.**

**Booth 917**

7700 Edgewater Dr, Ste. 670  
Oakland, CA 94621  
Ph: 510.568.3741  
Fax: 510.568.3781  
robert@datadraft.com  
www.nisd.org

The National Institute of Steel Detailing (NISD) is an international association which advocates, promotes and serves the interests of the steel detailing industry. The object of the Institute's programs and documents are designed to improve detailers' knowledge, verify their skills, and qualify their ability to properly manage detailing projects as well as to open a window to the world for its members.

### **NATIONAL STEEL BRIDGE ALLIANCE**

**Booth 759**

One E. Wacker Dr.,  
Ste. 3100  
Chicago, IL 60601  
Ph: 312.670.7010  
Fax: 312.670.5403  
www.nsbaweb.org

The National Steel Bridge Alliance (NSBA) is a unified voice for the steel bridge industry. The NSBA seeks to facilitate/coordinate industry efforts to enhance the deployment of steel bridge design and construction in the U.S. through technology, confidence building, infrastructure strengthening and market awareness. The NSBA focuses on assisting its membership with technical information for bridge design and construction needs.



### **NATIONAL WIRE FABRIC**

**Booth 916**

P.O. Box 159  
Star City, AR 71667  
Ph: 870.628.4201  
Fax: 870.628.4897  
savagencnationalwirefabric.com  
www.nationalwirefabric.com

### **NEA - THE ASSOCIATION OF UNION CONSTRUCTORS**

**Booth 1057**

1501 Lee Hwy, #202  
Arlington, VA 22209  
Ph: 703.524.3336  
Fax: 703.524.3364  
info@nea-nmapc.org  
www.nea-online.org

NEA is a nationwide network of over 5,000 union contractors, local union contractor trade associations, industrial maintenance contractors, and industry suppliers. The NEA is dedicated to providing members with the highest level of labor relations and safety services, and the promotion of positive labor-management programs in the construction industry.

### **NELSON STUD WELDING, INC.**

**Booth 720**

7900 W. Ridge Rd.  
Elyria, OH 44036  
Ph: 440.329.0400  
Toll Free: 800.633.9353  
Fax: 440.329.0492

www.nelsonstudwelding.com

Nelson offers new, extra-long, cold-formed shear connector and anchor studs meeting AWS, AISC and AASHTO specifications. They eliminate the need for piggybacking shorter stud lengths when long anchors are required, saving welding costs or using expensive hot forged studs. Punching Shear Resistor (PSR) studs are new and have a large head area. Nelson also has a new line of stud welding equipment. The systems feature controls that monitor and/or adjust more than 30 welding parameter for the highest quality and most reliable stud welds available.

### **NEW ENGLAND STEEL DETAILERS ASSOCIATION**

**Booth 1012**

614 Chapman St.  
Canton, MA 02021  
Ph: 781.828.1112  
Fax: 781.828.8320  
chapman@gjs.net

### **NICHOLAS J. BOURAS, INC.**

**Booth 845**

25 DeForrest Ave.  
Summit, NJ 07901-2154  
Ph: 908.277.1617  
Fax: 908.277.1619  
engineering@bourasind.com

Nicholas J. Bouras, Inc. is the sales, engineering and detailing subsidiary of Bouras Industries Inc., an integrated manufacturer of steel construction products with plants and sales offices in 16 states. United Steel Deck, Inc., Bouras's cold-formed products subsidiary, manufactures SDI specified steel floor and roof decking as well as metal siding and roofing products. Bouras's joist-manufacturing subsidiary, The New Columbia Joist Company, manufactures SJI specified K, LH & DLH series joists, joist girders and specialty trusses. ABA Trucking Corp. is Bouras's transportation services subsidiary, providing on-time deliveries of all of their products.

### **NITTO KOHKI USA, INC.**

**Booth 529**

4525 Turnberry Dr.  
Bartlett, IL 60103  
Ph: 630.924.9393  
Toll Free: 800.323.8828  
Fax: 630.924.0303  
svanrell@nittous.com

Save time, money and energy using the WA3500 portable automatic drilling machine from Nitto Kohki. Using carbide-tipped annular cutters, the WA3500 portable automatic drilling machine outperforms older magnet drills and high-speed steel annular cutters by 300%. WA3500 features include: self-regulating feed and speed controls, 1<sup>3</sup>/<sub>8</sub>" x 2" hole capacity, thru spindle coolant, built-in motion sensor and a no-tools-required, one-touch cutter installation system. Nitto Kohki's portable hydraulic, electric and pneumatic hand tools are among the finest available.

### **NUCOR FASTENER-INDIANA**

**Booth 711**

6730 County Rd. 10  
P.O. Box 6100  
St. Joe, IN 46785  
Ph: 260.337.1626  
Toll Free: 800.955.6826  
Fax: 260.337.1726  
jwitucki2@nucor-fastner.com  
www.nucor-fastner.com

Manufacturer of domestic steel hex head capscrews, build-to-print specials, steel hex structural bolts & nuts in both inch and metric sizes, and dome-head tension-control assemblies in various grades and finishes.

# 2003 NASCC EXHIBITOR LISTING

## North American Steel Construction Conference

### **NUCOR-YAMATO STEEL COMPANY** Booth 711

P.O. Box 1228  
Blytheville, AR 72316-1228  
Ph: 870.762.5500  
Toll Free: 800.289.6977  
Fax: 870.763.9107  
mpetitgoue@nucor-yamato.com  
www.nucoryamato.com

Steel manufacturer of wide flange structural steel shapes, steel H-piling & sheet piling, angle, channel, miscellaneous channel & standard shapes, and car building shapes. Grades include ASTM A36, ASTM A328, ASTM A572, ASTM A588, ASTM A690, ASTM A709 and ASTM A992.

### **OCEAN MACHINERY** Booth 316

3081 E Commercial Blvd.  
Fort Lauderdale, FL 33308  
Ph: 954.351.0899  
Toll Free: 800.286.3624  
Fax: 954.351.9472  
www.oceanmachinery.com

The Ocean AVENGER CNC Beam Line is the first choice for small to medium fabricators. Built in the USA for Ocean Machinery by Peddinghaus, the world's premier builder of steel fabricating machinery, the Ocean AVENGER is the ideal beam line solution for fabricators wanting to improve their efficiency. In 2002 Ocean Machinery set the US fabricating market on fire, selling more CNC beam drills than anyone else, and the new AVENGER is set to dominate US sales in 2003.

### **OMNITECH ASSOCIATES** Booth 927

P.O. Box 20792  
Oakland, CA 94620  
Ph: 510.658.8328  
Toll Free: 888.8DESCON  
Fax: 510.595.0373  
nilgun@desconplus.com  
www.desconplus.com

Omnitech Associates provides DesconWin and Descon Brace software for designing connections of steel structures. DesconWin designs shear and moment connections, including beam-to-column flange, beam-to-column web, and beam-to-girder connections as well as beam and column splices. Descon Brace designs vertical bracing connections, including diagonal and chevron bracing, and connections to HSS and W-columns. Both programs generate detailed calculation reports, drawings, and DXF files. ASD and LRFD versions are available.

### **P2 PROGRAMS** Booth 1020

P.O. Box 1000  
Dripping Springs, TX 78620  
Ph: 512.858.2007  
Toll Free: 800.563.6737  
Fax: 512.858.2008  
paul@p2programs.com  
www.p2programs.com

We are a software company that specializes in solving everyday business opportunities with standard or customized software products. Our primary focus is on software applications that use bar code technology to track products or processes. Some of our most popular standard products include the Steel Tracking System (STS), Warehouse Management and Project Management for the fabrication industry and our Conversion Utilities (AutoCad to EJE & KISS) for the detailing industry.

### **PEDDINGHAUS CORPORATION** Booth 405

300 N Washington Ave.  
Bradley, IL 60915  
Ph: 815.937.3800  
Fax: 815.937.4003  
www.peddinghaus.com



Peddinghaus Corporation exhibits the latest technology for the steel construction industry. Innovations for structural drilling will be displayed with the newly designed BDL 1000/3. This machine is capable of processing all structural shapes, including wide flange beams, columns, angle, channel, tubing and plate. A complete plate processing unit, the FDB 2500/3, featuring capacity to 96"x3', also will be exhibited. Roller feed measuring enables raw stock plate sections up to 20' long and 97' wide to be processed through the system. The functions of drilling, burning (via plasma or oxy-fuel), mill cutting, marking, and part handling are all basic functions of this flexible machine.

### **PFP TECHNOLOGIES PTY, LTD** Booth 216

51 Westchester Rd.  
Malaga, Western Australia 6090  
Australia  
Ph: +61.8.9.249.4542  
Fax: +61.8.9.249.4596  
info@mechatronics.com.au  
www.pfptechnologies.com.au

Released for the first time in the USA is the Inciser, a revolutionary 3-D profiling machine. Able to laser scan and accurately cut lengths and profiles in pipe, HSS, channels, angle, flat bar and plate. With one intelligent machine, perform the simplest of straight cuts to the most complex of copes, holes, slots and notches using gas and plasma. Also mark and label with inkjet, plasma or a welder.

### **PPG INDUSTRIES** Booth 828

1 PPG Place, 37 South  
Pittsburgh, PA 15272  
Ph: 412.434.3909  
Fax: 412.434.3991  
mbolton@ppg.com  
www.ppg.com

### **PREFERRED SAFETY PRODUCTS** Booth 748

5750 Pecost St., Ste.6  
Denver, CO 80221  
Ph: 303.477.8414  
Toll Free: 800.301.3188  
Fax: 303.477.1078  
jackm@preferredsafety.com

Preferred Safety Products, Inc., understands the need for a total safety solution: safety products, service, design, installation services, and engineering. We integrate products with training and management systems to work for you. Safety products will not work if implemented without an understanding of their limitations and best use. Practical solutions and safe compromises work for companies.

### **PRODRAFT, INC.** Booth 1005

4016 Raintree Rd, Ste. 300B  
Chesapeake, VA 23321  
Ph: 757.465.4805  
Fax: 757.465.4806  
prodraft@prodraftusa.com  
www.prodraftusa.com

# 2003 NASCC EXHIBITOR LISTING

## North American Steel Construction Conference

### QUALITY MANAGEMENT COMPANY, LLC Booth 915

One E Wacker Dr., Ste. 3100  
Chicago, IL 60601  
Ph: 312-670-7520  
Fax: 312-670-9030  
www.qmconline.net



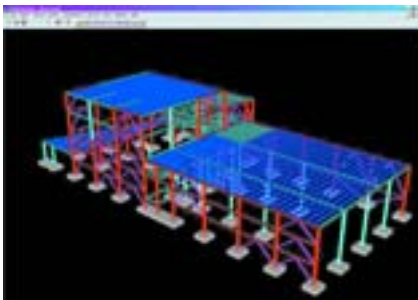
Quality Management Company, LLC provides independent third-party audits for the AISC Certification Program. QMC is dedicated to providing quality audits to fabricators and erectors. The auditing process provides the assurance that a certified fabricator or erector has the procedures, personnel, organization, experience, knowledge, equipment, capability, and commitment to successfully fabricate or erect a project.

### RAM INTERNATIONAL Booth 745

5225 Avenida Encinas, Ste. E  
Carlsbad, CA 92008  
Ph: 760.431.3610  
Toll Free: 800.726.7789  
gus@ramint.com  
www.ramint.com



RAM International, a recognized leader in Steel Design Software Solutions, will demonstrate how engineers and fabricators benefit from new products and services. Stop by AISC's CIMSteel booth and see why the RAM Structural System leads the way in integration. All Ram Products will be on display, including RAM Structural System, RAM Advanse, RAM Connection, RAM Perform, and RAM Productivity Tools. Stop by to see how these tools can take your productivity to a whole new level.



### RESEARCH ENGINEERS INTERNATIONAL Booth 1059, 1040

22700 Savi Ranch Pkwy  
Yorba Linda, CA 92887  
Ph: 714.974.2500  
Toll Free: 800.367.7373  
Fax: 714.974.4771  
www.reiworld.com



Research Engineers International introduces the next generation STAAD.Pro 2003, the most popular structural engineering software product for 3D model generation, analysis and design. It has intuitive, user-friendly GUI, visualization tools, powerful analysis and design facilities, and seamless integration to several other modeling and design software products. Products include STAAD.Pro 2003, STAAD.etc 4.0, STAAD.beava, Sectionwizard, Layout, ADLPipe, and autoCivil.plus.

### RISA TECHNOLOGIES Booth 935

26632 Towne Center Dr., Ste. 210  
Foothill Ranch, CA 92610  
Ph: 949.951.5815  
Toll Free: 800.332.RISA  
Fax: 949.951.5848  
info@risatech.com  
www.risatech.com

RISA-3D is a productive, time-tested general analysis and design program with total integration. A unique feature is physical modeling. It allows definition of members as they exist in the field rather than modeling members using multiple segments. RISAFloor designs floors and integrates with RISA-3D to provide a complete solution for building design. RISASection, RISABase and RISAFoot provide analyses of custom sections, footings or base plates. All RISA products provide high-quality graphics and custom reporting.

### ROMAC COMPUTER SERVICES INC. Booth 1056

332 S. Main  
P.O. Box 660  
Lake City, TN 37769  
Ph: 865.426.9634  
Fax: 865.426.6454  
romac@romacinc.com  
www.romacinc.com

Romac Computer Services has provided software solutions for the steel industry since 1982. Software includes estimating, production and inventory control, purchase orders, steel bill of material, and length and plate nesting. Economically priced packages are available for single-user and networked multi-user systems.

### THE S.D.I. STAIR CONNECTION, INC. Booth 1016

360 Camelot Dr.  
Fayetteville, GA 30214  
Ph: 770.719.7936  
Fax: 770.719.3681  
bparker360@earthlink.net

We are a miscellaneous steel/structural steel detailing service. We have 14 employees in two states.

### SCOTCHMAN INDUSTRIES INC. Booth 218

180 E. Hwy 14  
P.O. Box 850  
Philip, SD 57567  
Ph: 605.859.2542  
Toll Free: 800.843.8844  
Fax: 605.859.2499  
scotchman@scotchman.com  
www.scotchman.com

Scotchman Industries is a leader in the design and manufacture of equipment for the design and manufacture of equipment for the metalworking industry. Scotchman's Metal Fabricating Solutions feature hydraulic ironworkers from 40 tons to 120 tons, in three styles; circular cold saws with pivot; column design for ferrous and nonferrous applications; and band saws 10"-20" capacity with swing-head designs. Scotchman Grit Belt Grinders, and Tube and Pipe Notchers are powerful machines which can remove material fast and create perfect notches in tube and pipe in seconds.

### SEISMIC STRUCTURAL DESIGN ASSOCIATES, INC. Booth 905

34 Camden Court  
Camdenton, MO 65020  
Ph: 573.317.9463  
Fax: 573.317.1037  
jayallense@yahoo.com  
www.webmaster@ssda.net

We will exhibit the Slotted-Web Steel Frame Moment Connection. See website at www.webmaster@ssda.net.

# 2003 NASCC EXHIBITOR LISTING

## North American Steel Construction Conference

### THE SHARON COMPANIES Booth 1028

959 Lake Rd.  
Medina, OH 44256  
Ph: 330.723.3225  
Toll Free: 800.792.0129  
Fax: 330.723.3225  
sharonco@apk.net  
www.sharonstair.com

Our Drop-In system stairs feature factory controlled quality of preassembled, pre-engineered components with the design flexibility of a custom egress system. Our systems are designed and engineered to fit all stairwell openings and floor-to-floor heights (in accordance with specific code requirements) as well as architectural designs for a variety of tread, riser, stringer and rail details necessary to accommodate aesthetic and functional requirements.

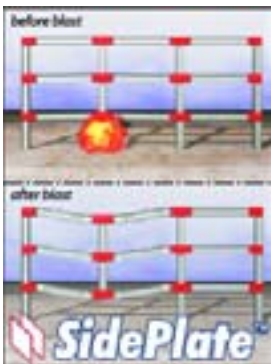
### SHERWIN - WILLIAMS Booth 738

101 Prospect Ave. NW  
Cleveland, OH 44115  
Ph: 803.418.0960  
Fax: 803.418.0960  
www.sherwin-williams.com

At Sherwin-Williams, we're always working hard to create innovative technology for our customers because we know it translates to satisfaction for yours. The new ExpressTech™ family of products has been developed to do just that. A complete line of products specifically for the fabricator market. Visit our booth at NASCC and our web site to learn more about these exciting new products.

### SIDEPLATE SYSTEMS, INC. Booth 949

5300 Orange Ave., Ste 214  
Cypress, CA 90630  
Ph: 714.995.4946  
Toll Free: 800.475.2077  
Fax: 714.995.6395  
hgallart@sideplate.com  
www.sideplate.com



**DEADLY PROGRESSIVE COLLAPSE.** Post-9/11 standard of care demands responsible design of steel frame buildings to mitigate against terrorist attack. Let SidePlate Systems help you respond to today's design challenges with SidePlate™ — Steel Frame Solutions, using its integrated pre-qualified solutions for ductile steel frame connec-

tion systems, including braced dual systems. SidePlate uniquely satisfies GSA, FAA, DOD and Army Corps of Engineers bomb blast mitigation Security Criteria and has unlimited pre-qualification of beam and column sizes—(ICBO ER-5366).

### SMI Booth 934

2305 Ridge Rd., Ste. 202  
Rockwall, TX 75087  
Ph: 972.772.0769  
Fax: 972.772.0882  
billy.milligan@joists.com  
www.smijoist.com



SMI Joist is a leading producer of open-web steel joists and girders. SMI Steel Products is a manufacturer of SmartBeams™. Smart Beam is a structural steel beam ideally suited for composite floor construction.



### SOFT STEEL INC. Booth 1052

7231 Boulder Ave., #226  
Highland, CA 92346  
Ph: 909.863.9191  
Fax: 909.863.9168  
mike@softsteeline.com  
www.softsteelinc.com

### SSDCP, INC. Booth 835

619 S. Cedar St., Studio A  
Charlotte, NC 28202  
Ph: 704.370.0840  
Fax: 704.358.1801  
info@ssdcp.com  
www.ssdcp.com

SSDCP is an AutoCAD-based product for making structural and miscellaneous steel fabrication drawings, plate-work details, anchor bolt plans, erection plans, e-sheet sections and more. SSDCP is one of the most trusted names in the industry, having been in use for more than 15 years. The programs include imperial and metric versions and can be used alone or alongside other systems like CVSpro, SDS/2 and Xsteel. Users get free technical support and no maintenance fees. Yearly updates.

### ST. LOUIS SCREW & BOLT Booth 1035

6900 N. Broadway  
St. Louis, MO 63147  
Ph: 314.389.7500  
Toll Free: 800.237.7059  
Fax: 314.389.7510  
www.stlouisscrewbolt.com

We are a major manufacturer and distributor of all types of structural fasteners including A325-1, A325-3, A490-1, A490-3, A449, A354. We also carry a full line of TC Bolts in F1554 (A325) and A490. We offer products plain, hot-dip galvanized, mechanically galvanized and in weathering steel. Our size ranges from 1/2" to 4" diameter in any length range. We also supply anchor rods in grades 36, 55 and 105 as well as A449 or stainless steels. We carry a full line of tools for both hex structural bolt and TC bolt installation. Our in-house lab is certified by A2LA and is FQA compliant. All our products are melted and manufactured in the USA. We supply product to state DOTs and are Cal-Trans approved. We perform in-house ro-cap tests.

### STEEL ERECTORS ASSOCIATION OF AMERICA Booth 907

2216 W Meadowview Rd, Ste.115  
Greensboro, NC 27407  
Ph: 336.294.8880  
Fax: 413.208.6936  
executivedirector@seaa.net  
www.seaa.net

The Steel Erectors Association of America (SEAA) is a national non-profit trade association composed of industry leaders that are committed to advancing education, safety and quality of steel erectors across the USA. SEAA has developed several comprehensive Subpart R Programs to help employers engaged in steel erection activities comply with the training requirements of OSHA's New Steel Erection Standard. SEAA protects the best interests of those building with steel through partnerships with steel erection regulations and specifications agencies.

### STEEL FOUNDERS' SOCIETY OF AMERICA Booth 837

205 Park Ave.  
Barrington, IL 60010  
Ph: 847.382.8240  
Fax: 847.382.8287  
poweleit@aticorp.org  
www.sfsa.org

Steel Founders' Society of America (SFSa) is a non-for-profit trade association whose mission is to promote and develop steel castings. SFSa's membership is limited to steel casting producers. We strive to serve by developing new technology, exchanging technical and operating experience, and expanding the steel casting marketplace.

# 2003 NASCC EXHIBITOR LISTING

## North American Steel Construction Conference

### **STEEL JOIST INSTITUTE** Booth 945

3127 10th Ave. N  
Myrtle Beach, SC 29577-6760  
Ph: 843.626.1995  
Fax: 843.626.5565  
donmurphy@infi.net  
www.steeljoist.org

The Steel Joist Institute is the trade association for the steel joist industry. Product specifications include the K-Series (shortspans or open web joists), the LH/DLH Longspan and Deep Longspan Series, and the Joist Girder Series. The Institute works with building code bodies to develop code regulations for steel joists and joist girders. The Institute invests in research related to steel joists and joist girders, and offers a complete library of publications and other training and research aids. The Steel Joist Institute is a not-for-profit organization.

### **STEEL STORAGE SYSTEMS** Booth 1026

6301 Dexter St.  
Commerce City, CO 80022  
Ph: 303.287.0291  
Toll Free: 800.442.0291  
Fax: 303.287.0159  
tcostello@steelstorage.com  
www.steelstorage.com

### **STEELCAD CONSULTING CORPORATION** Booth 1046

370 Center Pointe Circle, Ste. 1196  
Altamonte Springs, FL 32701  
Ph: 407.673.0880  
Toll Free: 800.456.7875  
Fax: 407.673.0885  
sales@steelcad.com  
www.steelcad.com

SteelCad offers automated steel detailing and fabrication software designed to dramatically increase productivity. Fast, user-friendly, accurate, and versatile, SteelCad gets the job done quickly and properly. SteelCad complies with AISC and CISC standards and essential detailing methods, so you don't need to spend time cleaning up drawings. SteelCad details beams, columns, vertical and horizontal bracing, stairs, and ladders. It produces erection drawings, gather sheets, material lists, cut lists, and production control or CNC data.

### **STEWART ENGINEERING & SALES COMPANY** Booth 632

2140 Aurora Ave.  
Muskegon, MI 49442  
Ph: 231.767.2140  
Fax: 231.767.2233  
ken@stewart.com  
www.steweng.com

The new Stewart Beam Rollover system is a safe and economical method of rotating

beams. It consists of a drive unit and an idler unit which are suspended from overhead cranes. They can be used as a pair or with driver unit alone. The electric model is 5-ton capacity, and air-powered models are available at 5- or 10-ton capacity.

### **STITES AND HARBISON** Booth 856

400 West Market Street, Suite 1800  
Louisville, KY 40202-3352  
Ph: 502.587.3400  
Fax: 502.587.6391

### **STRUCSOFT SOLUTIONS** Booth 627

5375 Pare St., Ste. 201  
Montreal, QC, H4P 1P7  
Canada  
Ph: 514.341.2028  
Fax: 514.341.8856  
info@strucsoftsolutions.com  
www.strucsoftsolutions.com



StrucSoft Solutions provides a one-stop steel construction software solution. ProSteel 3D: Auto-Cad based 3D modeling/detailing software featuring the latest in ARX and COM technology. Structural steel construction application, ideal for detailing/fabrication, engineering and architectural offices. ProSteel communicates with analysis software, generates complete parts lists, BOM and NC data for fabrication machinery. Uses international sections and connections, operates in imperial and metric units, customized parametric connections or assemblies via COM interface.

### **STRUCTURAL ENGINEERING INSTITUTE (SEI)** Booth 858

1801 Alexander Bell Drive  
Reston, VA 20191-4400  
Ph: 703.295.6195  
Fax: 703.295.6361  
sei@asce.org  
eee.seiinstitute.org

### **STRUCTURAL STABILITY RESEARCH COUNCIL (SSRC)** Booth 959

Univ of FLA; Dept Civil Engineering  
345 Weil Hall  
P.O. Box 116580  
Gainesville, FL 32611-6580  
Ph: 352.846.3874  
Fax: 352.846.3978  
ssrc@ce.ufl.edu  
ssrc.ce.ufl.edu

### **STUD WELDING ASSOCIATES** Booth 1053

41515 Schaden Road  
Elyria, OH 44035  
Ph: 440.324.3042  
Toll Free: 800.874.7860  
Fax: 440.324.3301  
www.studwelding.com

Stud Welding Associates manufactures and distributes a complete line of stud welding products for the steel construction industry. Products include shear connectors, headed anchors, deformed bar anchors, threaded studs, stud welding equipment and accessories.

### **TAYLOR DEVICES INC.** Booth 816

90 Taylor Dr.  
North Tonawanda, NY 14120  
Ph: 716.694.0800  
Fax: 716.695.6015  
bobschneider@taylordevices.com  
www.taylordevices.com

Taylor Devices is the world leading manufacturer of fluid viscous damping devices for earthquake, wind, and blast protection of buildings, bridges and many other structures. Other products include lock-up devices, liquid springs, crane buffers and virtually any other custom shock absorber product imaginable!

# 2003 NASCC EXHIBITOR LISTING

## North American Steel Construction Conference

### **TEKLA, INC.** Booth 620

600 TownPark Lane, Ste. 175  
Atlanta, GA 30144-5809  
Toll Free: 877.TEKLA.OK  
www.tekla.com



Tekla Xsteel is advanced 3D modeling and detailing software. Gain the power and flexibility you need for today's projects. With our unrivalled modeling, viewing and drawing production tools you can work faster and more accurately than ever. By combining easy input with the most flexible output available, your drawings, reports and CNC information will conform to the standards expected by North American fabricators and engineers. Visit our site, view our model and see for yourself.

### **TENSION CONTROL BOLTING, INC.** Booth 617

P.O. Box 182  
Greenfield, NH 03047  
Ph: 603.547.6697  
Fax: 603.547.6698  
genemitchell@tellink.net  
www.tensioncontrolbolting.com

### **TEXTRON FASTENING SYSTEMS** Booth 1029

840 W. Long Lake Road, Suite 250  
Troy, MI 48098  
Ph: 248.879.8660  
Fax: 248.813.6372  
www.textronfasteningsystems.com

### **THE QUEBEC CONNECTION** Booth 1004

2094 Beauregard  
Laval, QU, H7T 2M9,  
Canada  
Ph: 450.688.7336  
Fax: 450.688.3289

The French Connection is a group of six French-Canadian steel detailing offices in the Montreal area. Knowledge and years of experience combine to offer a qualified staff of designers, draftsmen and project managers. Top-of-

the-line software makes them able to handle steel projects of any kind and size. Together, the six offices employ more than 100 employees familiar with large and complex projects.

### **TURNASURE LLC** Booth 1047

340 E. Maple Ave., #305  
Langhorne, PA 19047  
Ph: 215.750.1300  
Toll Free: 800.525.7193  
Fax: 215.750.1300  
info@turnasure.com  
www.turnasure.com

TurnaSure continues to grow in the manufacture of Direct Tension Indicating (DTIs). They have supplied DTIs for Manhattan high rises. In addition to new curved-protrusion DTIs for all ASTM sizes and grades, inch and metric, TurnaSure has developed a British Standard version. With partners T.W. Lench Ltd., TurnaSure is now a significant exporter to the British market. Great improvements to accuracy and economics has resulted in greater popularity of DTIs with project engineers and state DOTs.

### **TXI CHAPARRAL STEEL** Booth 820

300 Ward Rd.  
Midlothian, TX 76065  
Ph: 972.779.3100  
Fax: 972.779.5026  
smurphy@txi.com  
www.txicom

TXI Chaparral Steel's primary product line is wide-flange beams. The WFB sizes ranges from 4" to 36". Other product lines include: Sheet pile, H-pile, standard I-beams, channel and special-bar-quality round bars. TXI Chaparral Steel has four producing mills, three in Midlothian, TX and one in Petersburg, VA. The combined capacity is 2.7-million tons per year. TXI Chaparral Steel is known for its wide range of readily available inventory. WFB inventory can be viewed on our web site. TXI Chaparral Steel is also known for superior and knowledgeable customer service.

### **V.M. INFORMATICS** Booth 724

211A Om Vihar Phase 1A  
Uttam Nagar, New Delhi  
India  
Ph: +91-25352358  
Fax: 646.365.3291  
rs@vsinformatcs.com  
www.vminformatcs.com

### **VALMONT** Booth 723

P.O. Box 358  
Valley, NE 68064  
Ph: 800.825.6668  
Fax: 402.359.4481  
bjh1@valmont.com  
www.valmont.com

Custom HSS squares and rectangles in virtually any increment from 10"-48" in  $\frac{5}{16}$ "- 1" wall thicknesses; ERW tubing from  $\frac{3}{4}$ " - 16" rounds and shapes.

### **VERMONT FASTENERS** Booth 1034

49 Jonergin Dr.  
Swanton, VT 05488  
Ph: 450.658.7017  
Fax: 450.447.0114  
krohn@infasco.com  
www.vfm.com

### **VOIGT & SCHWEITZER, INC.** DBA COLS GALVANIZING Booth 751

1000 Buckeye Park Rd.  
Columbus, OH 43207  
614.449.8281  
614.449.8851  
terryw@hotdipgalv.com  
www.hotdipgalvanizing.com

Hot Dip Galvanizing never looked so good. Voigt & Schweitzer, Inc., the world's largest hot dip galvanizing company, now has nine facilities and offers a full range of coating and corrosion protection services. Our Colorizing™ locations like brand-new Taunton, MA. Our Durozing™ system of design, trucking, packing or fab help, keeps V & S your full service corrosion protection operation.

### **VULCRAFT - SOUTH CAROLINA** Booth 711

1501 W. Darlington St.  
P.O. Box 100520  
Florence, SC 29501  
Ph: 843.662.0381  
Fax: 843.662.3132  
asears@vulcraft-sc.com  
www.vulcraft.com

Vulcraft continues to be an industry leader in both steel joist and steel deck products.

# 2003 NASCC EXHIBITOR LISTING

## North American Steel Construction Conference

### WESTERN PENNSYLVANIA STEEL FABRICATING, INC. Booth 1022

RD #3 Wilmington Road  
P.O. Box 5320  
New Castle, PA 1610  
Ph: 724.658.8575  
Toll Free: 800.373.9773  
Fax: 724.658.8676  
wpsf@ccia.com  
www.wpsfinc.com

Western Pennsylvania Steel Fabricating (WPSF) since 1976, is a complete heavy plate and structural fabricating facility with 50,000 sq. ft. under roof and a 160,000-lb. lifting capacity. We utilize AutoCad 2000-i. Our staff is experienced in CNC flame and plasma cutting, certified welders, a complete machine shop, in-house inspection, surface prep and painting. Recently, we received our conventional and complex steel building certification from AISC. WPSF can handle most any request.

### WHEELING CORRUGATING COMPANY Booth 613

1134 Market St.  
Wheeling, WV 26003  
Ph: 304.234.2400  
Fax: 304.234.2210  
clarkja@wpsc.com  
www.wheelingcorrugating.com

The decking is stacked in your favor. Wheeling Corrugating Company is one of the nation's leading fabricators of roll-formed products for the construction, highway, bridge building, commercial and residential markets. The premium steel decking you need, rolled to your job requirements. Delivered where you need it, when you need it. Wheeling Corrugating is



growing, and our expanded production capacity allows us to provide you with unsurpassed service, delivery scheduling and coordination.

### WPS DESIGNER Booth 758

24110 Meadowbrook Rd-Ste.104  
Novi, MI 48375  
Ph: 248.893.0132  
Fax: 248.893.0134.  
rshaw@steelstructures.com  
www.wps-designer.com

WPS Designer software creates Welding Procedure Specifications in accordance with the AWS Structural Welding Code - Steel D1.1:2002. It facilitates the technical analysis and approval of WPSs and PQRs, provides and uses AWS prequalified groove-welded joint configurations, and uses AWS prequalification values for steels, filler metals, preheat and PWHT, resulting in a complete WPS. It also provides complete welding cost estimating functions. WPS Designer software helps you improve and accelerate your welding operations, reducing welding cost.

### HOT PRODUCTS COMPETITION

Don't forget to enter your new and innovation products in *Modern Steel Construction's* **Hot Products Competition**.

The deadline for submittals is May 15, 2003. Read more about it by visiting:

[www.aisc.org/hotproducts](http://www.aisc.org/hotproducts)

### IN UPCOMING ISSUES

#### May

- Architecturally Exposed Structural Steel
- Bending Steel Product Highlights

#### June

- Engineering Awards of Excellence
- Safety Product Highlights
- Estimating and Project management Software Product Highlights

#### July

- Multi-Family Residential Construction
- HSS Availability Listing
- Concrete Plank Product Listing

#### August

- I.D.E.A.S. Award Winners
- Hot Products Awards