

# 2006 exhibitors the steel conference

## AceCad Software, Inc.

### Booth 321

825 Springdale Dr, Whiteland Business Center  
Exton, PA 19341  
Ph: 610.280.9840  
Fax: 610.280.9841  
[www.strucad.com](http://www.strucad.com)



StruCad puts a unique

array of powerful modeling and detailing tools into the hands of drafting professionals—providing the most productive solution for steelwork detailing. StruCad automatically produces shop drawings and reports required by fabricators and engineers. It has the ability to communicate with engineering software using C/S2. StruCad can also output CNC data to fabrication machines and Manufacturing Resource Planning (MRP) software. StruCad: the leading 3D structural steel detailing software in the world.



## Albina Pipe Bending Co., Inc.

### Booth 559

12080 SW Myslony St  
Tualatin, OR 97062  
Ph: 503.692.6010  
Toll Free: 866.252.4628  
Fax: 503.692.6020

### [www.albinapipebending.com](http://www.albinapipebending.com)

Specializing in pipe, square, and rectangular tube structural steel and spiral bending, forming, and fabrication since 1939. Ability to bend architecturally exposed material ranging from 1/8"-26" OD. One-half inch up to 20" tubing (easy way, hard way, compound, or off-axis). Angle, flat bar, square bar, wide-flange (I-beam), channel, plate, and split tee, etc. (easy way, hard way, or off-axis). Architectural exposure quality spiraling of tube steel, channel, plate, and pipe to amazingly tight radii and steep pitches.

## Algoma Steel, Inc.

### Booth 277

5515 North Service Rd  
Burlington, ON L7L 6G4, Canada  
Ph: 905.331.3400  
Fax: 905.331.3408

### [www.algoma.com](http://www.algoma.com)

A mainstay of the North American steel industry for over 100 years, Algoma Steel is a fully integrated steel mill, with annual production of more than 2.2 million tons of value-added hot rolled sheet, cold rolled sheet, as-rolled plate, and heat treated plate. With clean steel from integrated steelmaking, Algoma's Welded Beam Division produces high quality welded wide-flange (WWF) beams and welded shapes (WSS).

## Allied Machine & Engineering Corp.

### Booth 632

120 Deeds Dr  
PO Box 36  
Dover, OH 44622  
Ph: 330.343.4283  
Fax: 330.602.3400

### [www.alliedmachine.com](http://www.alliedmachine.com)

Allied Machine & Engineering Corp.'s solution for hole making in structural steel materials is available as a standard offering. Designed specifically for use on I-beams and steel plating materials, this patent-pending drilling system (drill inserts and holders) delivers outstanding results. AMEC structural steel drill inserts are available in the following geometry: T-A@ thin wall geometry insert, ideal for materials up to and including 7/16" thick; T-A@ Notch Point@ geometry insert, designed for material greater than 7/16" thick; and T-A@ 150° Notch Point@ structural steel drill insert—new from AMEC, specially designed to reduce exit burrs, and best suited in materials greater than 7/16" thick.

## American Galvanizers Association

### Booth 660

6881 S Holly Circle  
Suite #108  
Centennial, CO 80112  
Toll Free: 800.468.7732  
Fax: 720.554.0909

### [www.galvanizeit.org](http://www.galvanizeit.org)

Since 1935, the American Galvanizers Association (AGA) has represented the North American after-fabrication hot-dip galvanizing industry. AGA publishes a vast inventory of technical literature, presents seminars to educate in the specification and use of hot-dip galvanizing, and provides free technical support for fabricators, specifiers, and users of galvanized steel.

## American Institute of Steel Construction (AISC)

### Booth 377

One East Wacker Dr, Suite 700  
Chicago, IL 60601  
Ph: 312.670.2400  
Fax: 312.670.5403

### [www.aisc.org](http://www.aisc.org)

Learn about AISC's products and solutions, including information about AISC's ePubs program. Chat with AISC staff and meet the Steel Solutions Center team.



## American Punch Company

### Booth 630

27101 Tungsten Rd  
Euclid, OH 44132  
Toll Free: 800.243.1492  
Fax: 800.261.6270

### [www.americanpunchco.com](http://www.americanpunchco.com)

American Punch has been supplying AISC members with the best punches, dies, and shear blades available. Our quality is only surpassed by our product knowledge and customer service. Our manufacturing process is constantly evolving to guarantee the best possible product at the lowest possible price.

## American Subcontractors Association, Inc.

### Booth 664

1004 Duke St  
Alexandria, VA 22314-3588  
Ph: 703.684.3450  
Fax: 703.836.3482

### [www.asaonline.com](http://www.asaonline.com)

Founded in 1966, ASA serves 5,000 member companies and is dedicated to improving general business conditions for all subcontractors through unified and cooperative actions. ASA's vision is to be the united voice dedicated to improving the business environment in the construction industry. ASA provides its members with advocacy, leadership, education, and networking.

## American Welding Society

### Booth 242

550 NW LeJeune Rd  
Miami, FL 33126  
Ph: 305.443.9353  
Toll Free: 800.443.9353  
Fax: 305.443.1552

### [www.aws.org](http://www.aws.org)

AWS was founded in 1919 to advance the science, technology, and application of welding and allied processes, including joining, brazing, soldering, cutting, and thermal spraying. AWS activities include development of technical standards, certification of welding personnel, a major annual trade show, a variety of welding-related conferences and seminars, and publication of the award-winning monthly magazine, *Welding Journal*.

## A-Plus Galvanizing, LLC

### Booth 463

1100 N Ohio St  
PO Box 2717  
Salina, KS 67402-2717  
Ph: 785.820.9823  
Fax: 785.820.9816

### [www.aplusgalv.com](http://www.aplusgalv.com)

Specializing in hot-dip galvanizing of oversized material, with kettle dimensions of 82' long x 10' wide x 12' deep. Home of the "super kettle," the world's largest hot-dip galvanizing kettle. Oversized structures such as an 88,000 lb tower anchor for a cable stayed bridge, an 82' x 10' smoke stack assembly, and 81' railroad bridge beams have been hot-dip galvanized in a single dip. Eighty acres of on-site storage available.

## Applied Bolting Technology, Inc.

### Booth 541

1413 Rockingham Rd  
Bellows Falls, VT 05101  
Ph: 802.460.3100  
Toll Free: 800.552.1999  
Fax: 802.460.3104

### [www.appliedbolting.com](http://www.appliedbolting.com)



Applied Bolting makes Direct Tension Indicators (DTIs) user friendly. With the introduction of Squirter DTIs, made in accordance with ASTM F959, we have all but eliminated the need for feeler gages. By eye, one can tell when the bolts are tight. Erectors ask for them by name. Millions

of Squirters have been specified and installed on power plants, HRSGs, SCR's, LNG facilities, DOT bridges, commercial buildings, and stadiums.

## Arcelor International America

### Booth 459

350 Hudson St  
New York, NY 10014  
Ph: 212.520.7627  
Fax: 212.520.7702

### [www.arcelorusa.com](http://www.arcelorusa.com)

Arcelor (formerly TradeArbed, Aceralia, and Usinor) is the world's largest producer of structural shapes. It is the largest US importer of wide-flange beams and has served this market for over 75 years. Arcelor's ASTM A913 Gr.50 and Gr.65 steels offer superior beam characteristics including higher yield strength, excellent toughness, and outstanding weldability—in most cases without preheating. Arcelor also produces wide-flange beam sizes W14x426 thru W14x730 (jumbos) and numerous deep W36, W40, and W44 beams unavailable domestically.

## Archive Supplies, Inc.

### Booth 670

2975 Ladybird Lane  
Dallas, TX 75220  
Ph: 214.351.2183  
Toll Free: 800.466.8333  
Fax: 214.351.2103

### [www.archivesupplies.com](http://www.archivesupplies.com)

Archive Supplies, Inc. is a nationwide supplier of architectural, engineering, and graphic supplies and equipment (plotters, copiers, and scanners). We represent many major manufacturers and provide sales and factory trained warranty service and maintenance agreements on our equipment. We also supply items such as toners, inks, bond papers, translucent papers, vellums, films, and a wide array of graphic media—both inkjet and solvent. We invite you to visit us in booth 670 for further information and a demonstration of the latest KIP and HP hardware.

## Assurance Agency Ltd.

### Booth 666

One Century Center  
1750 E Golf Rd  
Schaumburg, IL 60173  
Ph: 847.463.7183  
Fax: 847.440.9126

### [www.assuranceagency.com](http://www.assuranceagency.com)

Assurance Agency is one of the top 100 insurance brokers in America and has partnered with AISC to bring customized insurance products and services to members. Utilizing a selected group of national and regional insurers, Assurance has negotiated special coverage terms, value-added services, and preferred pricing for your workers' compensation, liability, auto, property, and inland marine coverage needs. Please visit our booth or call Bob Barrese at 847.463.7183 (e-mail [bbarrese@assuranceagency.com](mailto:bbarrese@assuranceagency.com)) for more information.

# the steel conference 2006 exhibitors

## **Atema, Inc.**

**Booth 469**  
233 E Wacker Drive  
Suite 3402  
Chicago, IL 60601  
Ph: 312.946.1237  
Fax: 216.373.7297

### [www.atemasolutions.com](http://www.atemasolutions.com)

Atema is the sole company dedicated to providing quality related training for the structural steel industry with a specialty in AISC certification programs for bridges, buildings, and erectors. Atema also offers pre-assessments, on-call assistance, on-site customized training programs, executive management assistance, and internal certification program design. Fabricators, erectors, specifiers, architects, DOT engineers, and building officials will discover Atema's reputation to make training fun and entertaining. Stop by the Atema booth to "catch your M&Ms like steel."

## **Autodesk, Inc.**

**Booth 247**  
1111 McInnis Parkway  
San Rafael, CA 94903  
Ph: 415.507.5000

### [www.autodesk.com](http://www.autodesk.com)

Increase efficiency, accuracy, and design flexibility with Autodesk® Revit® Structure engineering and documentation software. Using a single building information model, proven parametric change management technology, and dynamic linking to industry-leading analysis applications, Autodesk Revit Structure integrates and coordinates your structural design and documentation. To learn more and see a live demo, visit the Autodesk booth. Autodesk helps you realize your ideas with the right combination of leading-edge technologies, decades of proven industry experience, and unparalleled worldwide services.

## **Aztec Galvanizing Services**

**Booth 472**  
1300 S University Dr #200  
Fort Worth, TX 76107  
Ph: 817.810.0016  
Fax: 817.336.5354

### [www.aztecgalvanizing.com](http://www.aztecgalvanizing.com)

Aztec Galvanizing Services, a division of AZZ, Inc., headquartered in Fort Worth, Texas, owns and operates 11 hot-dip galvanizing plants in the South and Southwest. Aztec kettles range from 25' to 58' in length. Aztec's network of plants enables them to accommodate the largest projects with customized turnaround times at a competitive price. Aztec's "GALVXTRA" has become a quality standard in the steel fabrication market.

## **BD Structural Design, Inc.**

**Booth 429**  
85 J-Armand Bombardier, Suite 200  
Boucherville, QC J4B 8P1, Canada  
Ph: 450.641.1434  
Fax: 450.449.1772

### [www.bdsd.com](http://www.bdsd.com)

BD Structural Design is a leading structural steel detailing company founded in 1975. Our services cover the production of shop drawings, erection diagrams, anchor bolt layouts, reports, ABMs, connections design calculi, and sketches linked with our automatic parametric transfer into 3-D models. The 3-D model reflects exactly the design with no possibility of error. We concentrate on heavy industrial buildings, stadiums, complex architectural buildings, power plants, towers, and skyscrapers. No limit on size.

## **BDS Steel Detailers, Inc.**

**Booth 533**  
225 E 1st St, Suite 108  
Mesa, AZ 85201  
Ph: 480.615.1700  
Fax: 480.615.1717

### [www.bdsglobal.com](http://www.bdsglobal.com)

BDS Steel Detailers is one of the largest detailing companies in the world, with 130 production detailers working on some of the most complex projects in the world. Our experience includes all types of projects including high-rise buildings, sports stadiums, power plants, hangars, and convention centers. We are the largest Tekla Structures (XSteel) user in the world. BDS has a proven track record on projects from \$20,000 to \$4 million!

## **Behringer Saws, Inc.**

**Booth 844**  
721 Hemlock Rd  
Morgantown, PA 19543  
Ph: 610.286.9777  
Fax: 610.286.9699

### [www.behringersaws.com](http://www.behringersaws.com)

Behringer Saws, Vemet Behringer, and Behringer Eisele design, manufacture, and install high-quality, cost-effective bandsaws, circular saws, fabricating machines, and integrated material handling systems for the metalworking and structural steel industries. Behringer Saws is a leading manufacturer of heavy-duty, high performance horizontal bandsaws designed to cut plates, tubes, profiles, and solids. Vemet Behringer's drill, punching, plasma-cutting, and coping lines offer fast, steady performance while maintaining high accuracy.

## **Bentley Systems, Inc.**

**Booth 441**  
685 Stockton Dr  
Exton, PA 19341  
Ph: 610.458.5000  
Fax: 610.458.1060

### [www.bentley.com](http://www.bentley.com)

Bentley Systems, Inc. provides software for the lifecycle of the world's infrastructure. The company's comprehensive portfolio for the building, plant, civil, and geospatial vertical markets spans architecture, engineering, construction (AEC), and operations. With 2004 revenues exceeding \$300 million, Bentley is the leading provider of AEC software to major owner-operators and *Engineering News-Record's* Top 500 Design Firms.

## **Biach Industries, Inc.**

**Booth 564**  
75 Chestnut Street  
PO Box 280  
Cranford, NJ 07016  
Ph: 908.276.3110  
Fax: 908.276.0815

### [www.biach.com](http://www.biach.com)

Since 1955, Biach Industries has designed and provided customized solutions to achieve accurate, easy, and safe bolt tensioning for critical bolted joints. Pitfalls inherent in torquing nuts to reach required bolt loads are avoided, and tensioners can be provided to fit in spaces where standard, off-the-shelf tooling can't. Geared nut seating assures accurate, repeatable bolt tensioning. Please visit our booth for more information about how we can help you optimize bolt loading for critical joints.

## **Brown Consulting Services, Ltd.**

**Booth 372**  
40 FM 1960 West #442  
Houston, TX 77090  
Ph: 281.260.9749  
Fax: 281.260.9771

### [www.steelconnectiondesign.com](http://www.steelconnectiondesign.com)

Brown Consulting Services, Ltd. is a professional structural engineering firm located in Houston, TX specializing in steel connection design for structural steel buildings and stairs. Licensed in 46 states and the U.S. Virgin Islands, Brown offers lump-sum project pricing, professional liability insurance, and quick turnaround. Clients include steel fabricators, erectors, general contractors, and detailers. Contact: [al@steelconnectiondesign.com](mailto:al@steelconnectiondesign.com) for a quote on your next project.

## **Buckner Companies**

**Booth 467**  
PO Box 598  
4732 NC 54 East  
Graham, NC 27253  
Ph: 336.376.8888  
Fax: 336.376.8855

### [www.bucknercompanies.com](http://www.bucknercompanies.com)

Since 1947, Buckner Companies have provided workmanship, met demanding schedules, and completed complex projects. We are ranked number seven by ENR's listing of top steel erectors. Buckner Steel Erection is an AISC and PCI certified erector. Over 600 years of experience is encompassed in Buckner's management supervisory and administrative team. Buckner Heavy Lift Cranes has one of the largest and most versatile equipment fleets in the nation. Ranked by International Cranes as one of the top crane companies in the world.

## **Bug-O Systems**

**Booth 555**  
3001 West Carson St  
Pittsburgh, PA 15204  
Toll Free: 800.245.3186  
Fax: 412.331.0383

### [www.bugo.com](http://www.bugo.com)

Bug-O Systems, a manufacturer of welding and cutting automation equipment, will display its newest innovations for increasing productivity—the Mini-Vert, a trackless battery powered fillet welder; and the Uni-Bug III, which will produce stitch or continuous welds that will run on a variety of structural steel profiles.

## **Burlington Automation**

**Booth 640**  
5041 Fairview St  
Burlington, ON L7L 4W8, Canada  
Ph: 905.681.9622  
Fax: 905.333.1477

### [www.burlingtonautomation.com](http://www.burlingtonautomation.com)

## **Busch Industries, Inc.**

**Booth 650**  
900 East Paris Ave SE  
Grand Rapids, MI 49546  
Ph: 616.957.3737  
Fax: 616.957.9951

### [www.buschindustries.com](http://www.buschindustries.com)

Busch Industries, Inc. is the exclusive U.S. licensee for USKON Space Frames of Istanbul, Turkey. USKON Space Frames are utilized in architecturally exposed roof framing applications such as arenas, auditoriums, airport terminals, atriums, canopies, and similar structures. All work is on a customized design-build basis with steel components finished with a shop-applied powder coat polyester finish in a standard color. USKON is ISO 9001 certified.

## **Cambco, Inc.**

**Booth 634**  
PO Box 37305  
Houston, TX 77237-7305  
Ph: 713.781.9702  
Fax: 713.781.0193

### [www.camboinc.com](http://www.camboinc.com)

Cambco, "the original" cambering machine company, developed the first commercially available cambering machine in 1984. We now offer eight models to meet any cambering need, from small commercial buildings to highway bridges. The Model 420 will camber Grade 50 beams as large as a W30x116, while the Model 1700 will camber a W36x439 of a W40x397. Special versions adapted to be fed by a conveyor system are available. All models are available complete and ready to operate or as "do-it-yourself" kits.

## **Canam Steel Corporation**

**Booth 217**  
U.S. Headquarters  
4010 Clay Street  
Point of Rocks, MD 21777  
Ph: 301.874.5141  
Fax: 301.874.5685

### [www.canam.ws](http://www.canam.ws)



Canam loves to tackle the difficult work. Experienced, dedicated engineering teams thrive on challenging jobs. Our AISC-member fabrication shop has the equipment and the American Welding Society-certified people to guarantee that everything will fit together just right when it's time to erect a building. Our four United States plants have been designing and fabricating steel joists and related components for nearly five decades.



# 2006 exhibitors the steel conference

## Carboline/AD Fire Protection

### Booth 358

350 Hanley Industrial Ct  
St. Louis, MO 63144  
Ph: 314.644.1000  
Fax: 314.644.4617

### [www.carboline.com](http://www.carboline.com)

Carboline Company offers a comprehensive product line for protecting steel through high performance coatings and fireproofing. Product lines include permanent zinc primers (Carbozinc), rapid-cure shop systems, and long-term weathering finishes (Carboxane). We specialize in fabrication-friendly systems. Both heavy duty (Pyrocrete) and intumescent (Nullfire and AD Fire-film) fireproofing offers a variety of design features for architects and owners who are interested in long term appearance and performance.

## Cerabco Ltd.

### Booth 449

809 Harrison Street  
Frenchtown, NJ 08825  
Ph: 908.996.1333  
Fax: 908.996.0023

### [www.cerabco.com](http://www.cerabco.com)

Cerabco will provide samples from its line of 500+ configurations of non-metallic weld backings that permit finished quality, full-penetration welds from one side. Where one-sided welding is not desirable, the backings eliminate the need for arc gouging or heavy grinding prior to second-side welding. The company specializes in furnishing custom configurations and formulations. Technical assistance and free custom design services will be offered.

## Chaparral Steel

### Booth 524

300 Ward Rd  
Midlothian, TX 76065  
Ph: 972.779.3100  
Toll Free: 800.527.7979  
Fax: 972.779.1236

### [www.chapusa.com](http://www.chapusa.com)

Chaparral Steel is the second largest producer of wide-flange beams in the U.S. The company maintains a low-cost profile at its four rolling mills located in Midlothian, TX and Petersburg, VA. Chaparral Steel features its Fast-Frame frame-delivery system. A Fast-Frame team consists of a structural engineer, a steel fabricator, a detailer and the mill. The engineer designs from available inventory in concert with the fabricator. Working together form the onset of a project, teams have delivered frames 40% faster than by conventional methods.

## Chicago Metal Rolled Products

### Booth 468

3715 S Rockwell St  
Chicago, IL 60632  
2193 Manchester Dr  
Kansas City, MO 64126  
601 Bryson Walk  
Bryson City, NC 28713  
Ph: 773.523.5757  
Fax: 773.650.1439

### [www.cmpr.com](http://www.cmpr.com)



Roll-curving of every size of angle, bar, channel, and tee up to W44x285 the hard way (x-x axis) on the world's largest beam bender. Tube and pipe bending up to 20" OD, from tight bends (2x the OD of the pipe) to large sweeps. Rectangular tubing up to 20"x12." Low-deformation, thin-wall bending for weight-sensitive applications. In addition to single-radius bending in one plane, Chicago Metal Rolled Products also offers: rolling off-axis and multi-axis bends; multi-radius bends; true,

helical coils; and plumb, circular stair stringers. Hard-way, easy-way, and every way in between!<sup>TM</sup>

## Cleveland City Forge

### Booth 570

46950 State Route 18 West  
Wellington, OH 44090  
Ph: 440.647.5400  
Fax: 440.647.4185

### [www.clevelandcityforge.com](http://www.clevelandcityforge.com)

Cleveland City Forge is a world leader in structural steel hardware. Products include clevises, turnbuckles, turnbuckle assemblies, threaded rods, adjustable yokes, eye nuts, eyebolts, and rod ends.

## Combilift

### Booth 577

Clontibret, Co. Monaghan, Ireland  
Ph: 281.507.0066  
Toll Free: 877.COMBI.56  
Fax: 336.378.8842

### [www.combilift.com](http://www.combilift.com)

The Combilift is an engine-powered four-directional forklift designed primarily for handling long loads in confined areas. Suitable for use both inside and out, the machine can operate in aisles as narrow as 2 m (80"). The fully synchronized four-way steering system provides excellent maneuverability.

## Comeq, Inc.

### Booth 745

PO Box 207  
White Marsh, MD 21162-0207  
Ph: 410.933.8500  
Fax: 410.933.1600

### [www.comeq.com](http://www.comeq.com)

Exclusive distributor of world-renowned metal fabricating machinery, including Geka hydraulic single and dual cylinder ironworkers and CNC controlled punching and shearing systems; Roundo angle and plate bending rolls; Adira press brakes and shears; Americor plate bending rolls; Primeline press brakes and shears; and much more. Be sure to visit us in Booth 745 and ask about our newest products, the Geka Hydracrop Series Model "AD" and the Geka Model "Bendicrop" ironworkers.

## Computers and Structures, Inc.

### Booth 241

1995 University Ave, Suite 540  
Berkeley, CA 94704  
Ph: 510.845.2177  
Fax: 510.845.4096

### [www.csiberkeley.com](http://www.csiberkeley.com)

Computers and Structures, Inc. specializes in structural and earthquake engineering software. The products offered by CSI (SAP2000, ETABS, and SAFE) cover a wide range of structural applications from high-rise buildings to multi-use, one- and two-story structures (industrial structures, hospitals) and bridges (suspension and cable stayed bridges, multi-span bridges) to transmission towers. For nearly three decades, CSI software has been used for the analysis and design of major projects in over 150 countries.

## Controlled Automation, Inc.

### Booth 633

PO Box 888  
Bryant, AR 72089  
Ph: 501.557.5109  
Fax: 501.557.5618

### [www.controlledautomation.com](http://www.controlledautomation.com)



Controlled Automation, Inc. was established in 1986 and is a manufacturer of angle punch lines, beam punch lines, drill lines, plate burning and punching machines, and material handling conveyors. All new machines manu-

factured in their entirety in our shops in Bryant, AR. In addition to new machinery, we also have one of the largest rebuild and retrofit shops in the country and offer packages for angle lines, beam lines, drill lines, and burning tables. We are a single source company for service, electronics, software, and design.



## Council of American Structural Engineers (CASE)

### Booth 566

1015 Fifteenth St NW, Suite 802  
Washington, D.C. 20005  
Ph: 202.347.7474  
Fax: 202.898.0068

### [www.acec.org/about/case.cfm](http://www.acec.org/about/case.cfm)

CASE is an organization dedicated exclusively to improving profitability and the business and management practices of structural engineering firms. Benefits of membership include a number of standardized contracts especially for structural projects, national practice guidelines for SER and SSE, commentaries on AIA documents, and a formal risk management program (RMP). CASE's mission is to provide leadership in risk management processes and procedures for structural engineers, improve the business practices of the structural engineering community, and increase the standing of the structural engineer in the construction industry.

## Creative Engineering Services

### Booth 271

160 Durham Ave, Suite 101  
Metuchen, NJ 08840  
Ph: 201.623.9369  
Fax: 201.221.7670

### [www.crenser.com](http://www.crenser.com)

Creative Engineering provides structural steel detailing, steel material take off, estimating, and connection design services. With state-of-the-art infrastructure we strive to provide top-notch customer satisfaction. Our engineers, detailers, and estimators will work with you to ensure that your projects are delivered accurately and on time. Call us today to find out more.

## CSC [UK] Ltd.

### Booth 376

Yeadon House, New Street  
Pudsey, West Yorkshire LS28 8AQ-UK, UK  
Ph: 44.113.239.3000  
Fax: 44.113.290.0920

### [www.cscworld.com](http://www.cscworld.com)

CSC is the leading supplier of design software to the highly competitive UK structural steel market. CSC software has revolutionized the "design and build" sector in the UK, and the company looks forward to capitalizing on this emerging market in North America. Please visit us at Booths 376 and 378 or attend one of our workshops to realize the advancements that have been made in the UK and how these can be transposed to the North American market.

## CSI Metal Dek Group, a unit of CSI

### Booth 528

650 Rosewood Dr  
Columbia, SC 29201  
Ph: 803.251.5003  
Fax: 803.799.6811

### [www.metaldetek.com](http://www.metaldetek.com)

The Metal Dek Group<sup>TM</sup>, a unit of CSI, offers steel floor and roof decks for structural, aesthetic, and acoustical applications. Its facilities are strategically located in Columbia, SC; Memphis, TN; Dallas, TX; and Phoenix, AZ. The company serves both the design community and construction companies with engineering, project management, and logistical services. Its state-of-the-art web site, [www.metaldetek.com](http://www.metaldetek.com), has now been enhanced to offer 24/7 design, project management, and real-time project information.

## Daito USA, Inc.

### Booth 651

1470 Elmhurst Rd  
Elk Grove Village, IL 60007  
Ph: 847.437.6788  
Fax: 847.437.6789

### [www.daito-seiki.com](http://www.daito-seiki.com)

Daito is known for its award-winning engineering, uncompromising commitment to quality, and superior customer service. We offer a full line of machines for small, medium, and large plants. The world's finest CNC drilling machines for structural beams, band saw machines, and coping machines for structural steel fabricators are Daito machines.

# the steel conference 2006 exhibitors

## Delta Engineering Group

**Booth 262**  
300 S Freeman  
Idaho Falls, ID 83401  
Ph: 208.528.6110  
Fax: 208.529.5621

[www.degroupp.com](http://www.degroupp.com)

Delta Engineering Group was established in 1991 to meet the detailing and engineering needs of local steel fabricators and erectors. Since 1991, Delta has expanded its customer base across the country, from Alaska to South Carolina. Delta uses state-of-the-art computer technology to provide accurate detailing and design to our customers, while striving to lower the overall project costs. Delta's projects vary in type, from the Arizona Cardinals Stadium to waste water facilities, and in size from 50 tons to 2,380 tons.

## Derr Steel Erection Company

**Booth 471**  
13400 Trinity Blvd.  
PO Box 637  
Euleless, TX 76039  
Ph: 817.571.4044  
Fax: 817.571.4544

[www.derrsteel.com](http://www.derrsteel.com)

Derr Steel Erection Company is one of America's most experienced builders of heavy complex structures for buildings. Along with our affiliate Derr and Gruenewald Construction in Denver, we have constructed many of the stadiums, convention centers, arenas, airports, and buildings that are now landmarks of cities from coast to coast.

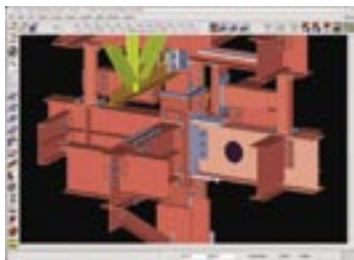
## Design Data

**Booth 417**  
1501 Old Cheney Rd  
Lincoln, NE 68512  
Ph: 402.441.4000  
Fax: 402.441.4045

[www.sds2.com](http://www.sds2.com)



Design Data has 25 years of experience in producing its premier SDS/2 steel detailing software. Throughout its history, Design Data has been an innovator by bringing new and exciting concepts to the market. SDS/2 gives you the power of automatic connection design and erectability checks along with the flexibility of parametrics and adaptive detailing. From the engineer's office to the shop floor through erection, SDS/2 provides customers a central model to collaborate time critical projects. SDS/2 is the perfect fit for every steel organization wanting a competitive advantage.



## DetailCAD

**Booth 369**  
PO Box 2008  
Whitefish, MT 59937  
Ph: 406.862.7906  
Fax: 406.862.4750

[www.detailcad.com](http://www.detailcad.com)

DetailCAD® is an automated program working inside AutoCAD® that produces shop details with minimum input and enhancement. Shop details—including beams, columns, bracing, stairs, HR, and welded frames—can be produced directly from framing-plan or piece-by-piece input. Anchor bolt plans, erection plans, evaluations, and an advance bill table can be produced from plan input methods. Plan input is done with dialog boxes by inputting grid location, adding columns to the grid crossing, and then generating details or a 3D mode.

## Detailed Design Drafting Services Ltd.

**Booth 234**  
#220-198 E Island Hwy  
Parksville, BC V9Y 8E6, Canada  
Ph: 250.248.4871  
Fax: 250.248.4826

[www.detaileddesign.com](http://www.detaileddesign.com)

Detailed Design Drafting is an industry leader in structural steel detailing. We utilize Tekla Structures (Xsteel) detailing software. We currently have 45 staff members and have detailed a wide variety of projects including, design-build projects, coal boilers, gas plants, international airports, hospitals, schools, and transit buildings. We offer all data for fully automated shops including .kss files, CNC data, point-to-point lists for bolts, and many custom reports for the shop and field.

## Dimension 3D Printing

**Booth 380**  
14950 Martin Dr  
Eden Prairie, MN 55344  
Ph: 952.937.3000  
Fax: 952.937.0070

[www.dimensionprinting.com](http://www.dimensionprinting.com)

The Dimension 3D Printing Group of Stratasy, Inc. offers a complete line of 3D printers that allow you to bring your design ideas to life. Simply send a 3D CAD file to the printer and within hours you'll have a physical model of your design. Dimension 3D Printers use the patented Fused Deposition Modeling (FDM) technology to build your model layer by layer, in durable ABS plastic. Dimension lets you get firsthand input from everyone involved—early on and throughout the design process—with functional parts. Dimension 3D Printers can help you quickly explore and fine tune designs to cut weeks—even months—from your design and development schedule.

## Dowco Consultants, Ltd.

**Booth 230**  
2433 Holdom Ave  
Burnaby, BC V5B 5A1, Canada  
Ph: 604.606.5800  
Fax: 604.606.5818

[www.dowco.com](http://www.dowco.com)

Founded in 1970, Dowco Consultants Ltd. is one of the largest fully automated detailing companies in the world (155+ staff) and is recognized as one of the leading steel detailers in North America. With a proven track record of exceptional detailing, Dowco provides the highest quality of detailing services to local, regional, national, and international construction and engineering markets.



## Edison Welding Institute (EWI)

**Booth 668**  
1250 Arthur E Adams Dr  
Columbus, OH 43221-3585  
Ph: 614.688.5000  
Fax: 614.688.5001

[www.ewi.org](http://www.ewi.org)

EWI is North America's leading engineering and technology organization dedicated to welding and materials joining. EWI's staff provides materials joining assistance, contract research, consulting services, and training to over 3,300 member company locations representing world-class leaders in the aerospace, automotive, defense, energy, government, heavy manufacturing, medical, and electronics industries.

## ESAB Welding and Cutting

**Booth 451**  
411 S Ebenezer Rd  
Florence, SC 29501  
Ph: 843.664.4433  
Toll Free: 800.933.7070  
Fax: 843.677.5815

[www.esabna.com](http://www.esabna.com)

For 100 years, ESAB has been an innovator in the welding and cutting industry, with the invention of the coated-stick electrode and processes such as Heliarc and Plasmarc. ESAB brand names like Oxweld, Purox, Migmaster, Allstate, Arcaloy, Atom Arc, and Dual Shield have become industry standards.

## FabTrol Systems, Inc.

**Booth 517**  
132 E Broadway, Suite 636  
Eugene, OR 97401  
Ph: 541.485.4719  
Fax: 541.485.4302

[www.fabtrol.com](http://www.fabtrol.com)

FabTrol MRP is the global leader in steel fabrication management software. With integrated estimating, drawing management, material management, production control, and shipping, FabTrol MRP automates the steel fabrication process. FabTrol MRP was designed by steel fabricators for steel fabricators, and is proven to help increase revenues, reduce costs, improve quality, and shorten project schedules.

## Ficcep Corporation

**Booth 623**  
2301 Industry Court  
Forest Hill, MD 21050  
Ph: 410.588.5800  
Fax: 410.588.5900

[www.ficcepcorp.com](http://www.ficcepcorp.com)



During this

year's conference, Ficcep Corporation will exhibit the latest advancements in CNC processing of structural steel and plate for the fabrication industry. The exhibition

will contain multiple CNC lines to give the membership a comprehensive understanding of the world-leading Ficcep technology and the range of lines available to address the needs of all sizes of fabricators.



## Fisher & Ludlow

**Booth 654**  
8059 Dixie Highway  
Florence, KY 41042  
Toll Free: 800.334.2047  
Fax: 859.282.7702

[www.fisherludlow.com](http://www.fisherludlow.com)

Fisher & Ludlow is a full line manufacturer of bar grating, safety grating, and expanded metal products. Our eight North American locations provide rapid delivery of standard panels and custom-fabricated grating. Our product line includes carbon steel bar grating, stainless steel bar grating, heavy duty bar grating, aluminum bar grating, fiberglass grating, Grip Span and Shur Grip safety grating, and expanded metal.

## Flowdrill, Inc.

**Booth 535**  
2820A Breckenridge  
Ind Ct  
St. Louis, MO 63144  
Ph: 314.968.1134  
Fax: 314.968.1510

[www.flowdrill.com](http://www.flowdrill.com)

Flowdrills create friction to generate heat and displace metal to form holes with a bushing that is three times the material thickness. This bushing can be tapped and used in place of welded, pressed, or inserted nuts or clips. They can be used with CNC machines, manual drill presses, or in automated work cells in steel, aluminum, brass, copper, stainless steel, and titanium.



# Flowdrill

# 2006 exhibitors the steel conference

## **G.W.Y., Inc.**

### **Booth 527**

217 Forest Road  
PO Box 293  
Greenfield, NH 03047  
Toll Free: 888.838.6500  
Fax: 603.547.3801

[www.gwyinc.com](http://www.gwyinc.com)

G.W.Y., Inc is celebrating its 30th year of distributing installation tools for structural bolting. G.W.Y., Inc. has a full line of installation wrenches for both TC bolts and standard structural bolts. Like the TC wrenches, G.W.Y.'s wrenches for heavy hex head structural bolts are constant speed electric tools that allow the bolts to be tightened from one side by one person. In addition to new wrench sales, G.W.Y. also rents installation tools. G.W.Y.'s extensive spare parts inventory enables them to provide same-day service for most tool repairs.

## **Gaule Detailing**

### **Booth 263**

230 N Pine St.  
PO Box 35  
Creston, IA 50801  
Ph: 641.352.5334  
Fax: 641.352.5335

[www.gauledetailing.com](http://www.gauledetailing.com)

Gaule Detailing has served the steel fabrication industry since 1981. Owner Alvin Gaule taught steel detailing at Southwestern Community College in Creston, Iowa for 15 years. He left that position in 1998 to commit all of his effort toward the detailing business. Employees at Gaule Detailing use SDS/2 and SSDCP software to produce quality structural and miscellaneous steel drawings. They strive for 100% accuracy while making every effort not to delay the project.

## **Genesis Quality Systems, Inc.**

### **Booth 265**

100 Engelwood Dr, Suite F  
Orion, MI 48359  
Ph: 248.377.1788  
Fax: 248.377.1788

[www.genesisqs.com](http://www.genesisqs.com)

GQS currently provides support services to accreditation bodies, code providers, construction managers, general contractors, engineers, fabricators, and inspection agencies. Support services include constructability assessment; specification reviews; pre-qualification of fabricators, detailers, erectors and inspection agencies; detailing management; project quality management; process management systems to AISC, IAS, MBMA, ASME, and/or DOT certification criterion; third party audits; inspection and testing; coating system evaluations; training; and expert witness.

## **Girder-Slab Technologies, LLC**

### **Booth 226**

PO Box 4126  
1256 Marlkrass Rd  
Cherry Hill, NJ 08034  
Ph: 888.478.1100  
Fax: 856.424.6880

[www.girder-slab.com](http://www.girder-slab.com)

As an alternative to cast-in-place concrete or masonry bearing systems, the Girder-Slab system remains a highly innovative structural steel approach to the multistory residential market. This non-proprietary system has been used in more than 3 million sq. ft of construction. The D-Beam girder projects only 9/16" below the floor slab. Low floor-to-floor heights are easily achieved and no shoring is required. A lighter frame often results in foundation savings, and installation is not delayed by freezing temperatures.

## **Graitec, Inc.**

### **Booth 223**

1695 Laval Blvd, Suite 200  
Laval, QC H7S-2M2, Canada  
Toll Free (sales): 877.464.3366  
Toll Free (support): 877.464.5046  
Fax: 450.663.6325

[www.graitec.com](http://www.graitec.com)

Graitec is one of the largest developers of structural construction software worldwide. Advance-Steel is used by design professionals, detailing offices, and steel construction companies that require a comprehensive and completely integrated package in AutoCAD®. Advance is a high-end yet user-friendly, affordable 3D solution that automates the entire design process (engineering, detailing, and erection drawings, various reports, etc.) and produces NC fabrication drawings and code in AutoCAD®.

## **Greyhawk North America, LLC**

### **Booth 622**

260 Crossways Park Dr  
Woodbury, NY 11797  
Ph: 516.921.1900  
Toll Free: 888.280.HAWK  
Fax: 516.921.5649

[www.greyhawk.com](http://www.greyhawk.com)

Very few firms share Greyhawk's expertise and knowledge of the structural steel industry. We are highly regarded for our objective perspective, which comes from knowing all sides of this business, inside and out, and our familiarity with the protocols associated with structural steel design, engineering, detailing, fabrication, and erection. As the leading industry consultant, Greyhawk's staff has been associated with well over 250,000 tons of structural steel.



## **Groupe CADmax**

### **Booth 658**

8953 Robert Armour, Suite 201  
Montreal, QC H1E 6J7, Canada  
Ph: 514.323.0713  
Toll Free: 877.477.0713  
Fax: 514.323.9091

[www.groupecadmax.com](http://www.groupecadmax.com)

Groupe CADmax is second to none in consulting and shop detailing services for miscellaneous, ornamental, and architectural metal work in North America. With a team with more than 100 years of experience in the field as fabricators, erectors, designers, and project managers, we have been for over eight years with several U.S. customers. Come and visit our sales representative in Booth 658 and find out how we can assist your team and/or add to your present outside force.

## **Haydon Bolts, Inc.**

### **Booth 447**

1181 Unity Street  
Philadelphia, PA 19124  
Ph: 215.537.8700  
Fax: 215.537.5569

[www.haydonbolts.com](http://www.haydonbolts.com)

Haydon Bolts, Inc. is a 141-year-old leading manufacturer and distributor of all kinds of structural bolts and electric tools to the heavy steel and concrete construction industries. Haydon also manufactures large-diameter (5/8" to 2-1/2") hot forged headed bolts of all grades, as well as bent anchor rods and rod and plate anchors. Haydon operates out of its 40,000 sq. ft manufacturing and distribution facility in Philadelphia. Haydon is a charter member of the Industrial Fastener Institute (IFI), the trade organization of the leading fastener manufacturers in North America, as well as an associate member of AISC.

## **Hilti, Inc.**

### **Booth 442**

5400 S 122nd E Ave  
Tulsa, OK 74146  
Toll Free: 800.879.8000  
Fax: 800.879.7000

[www.us.hilti.com](http://www.us.hilti.com)

Hilti is a world-leading manufacturer and supplier of quality innovative and specialized tools and fastening systems for the professional user. With more than 800 highly trained Hilti account managers and engineers throughout North America, and an additional 1,300 Hilti employees nationwide, Hilti expertise covers the areas of powder-actuated fastening, drilling and demolition, diamond coring and cutting, measuring, firestopping, screw fastening, adhesive and mechanical anchoring, and strut and hanger systems.

## **Hodell-Natco Industries, Inc.**

### **Booth 254**

1297 North Post Oak Blvd., Suite 100  
Houston, TX 77055  
Ph: 713.263.7600  
Toll Free: 800.275.2658  
Fax: 713.263.7688  
Toll Free Fax: 800.994.2678

[www.hodell-natco.com](http://www.hodell-natco.com)

Hodell-Natco Industries has been a fastener and chain supplier for over 120 years. Our eight strategically located warehouses encompass over 350,000 sq. ft of warehouse space. We offer same-day shipping on hot-dip galvanized, mechanical galvanized, zinc, and plain finish structural fasteners. Material is available in both import and domestic with complete traceability. Stop by Booth 254 for the complete listing of products and services that we can supply.

## **Hougen Manufacturing, Inc.**

### **Booth 546**

3001 Hougen Dr  
Swartz Creek, MI 48473  
Ph: 810.635.7111  
Fax: 810.635.8277

[www.hougen.com](http://www.hougen.com)

Hougen portable magnetic drills and Rotabroach® annular cutters bring the drill to the work-site. Fifteen models provide the capacity to drill holes from 7/16" up to 3-1/16" diameter and as deep as 3'. Also, sheet metal hole cutters cut clean, round holes without tearing or deforming the surrounding material.

## **IES, Inc.**

### **Booth 588**

519 E Babcock St  
Bozeman, MT 59715-4713  
Toll Free: 800.707.0816  
Fax: 406.586.2665

[www.iesweb.com](http://www.iesweb.com)

For over a decade, Integrated Engineering Software (IES), Inc. has provided leading edge structural engineering software. Over 1,800 professional engineering firms and 200 universities rely on IES's intuitive user interface, software productivity within minutes, informative reports, accessible technical support, and industry commitment to evolve its broad product line. Producing a fully guaranteed product like VisualAnalysis for general analysis and building design, IES sets the standards for results-oriented engineers.

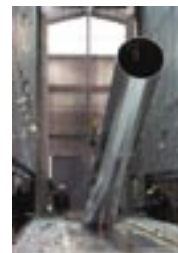
## **Industrial Galvanizers America**

### **Booth 644**

3535 Halifax Road  
Petersburg, VA 23805  
Ph: 804.733.0808  
Fax: 804.733.2274

[www.indgalv.net](http://www.indgalv.net)

Industrial Galvanizers is an international provider of quality hot-dip galvanizing, with five plants conveniently located throughout the southeastern United States near major north-south and east-west interstates. Your material is processed using a management model based on three internationally recognized standards and meets or exceeds all pertinent ASTM requirements.



## **Infasco**

### **Booth 216**

700 Oulettes  
Mariville, QC J3M 1P6, Canada  
Ph: 450.658.8741  
Fax: 450.447.0114

[www.infasco.com](http://www.infasco.com)

Infasco's 1,000,000 sq. ft manufacturing facility is one of the fastener industry's largest manufacturing plants. It operates around the clock, filling orders from distributors around the world. Infasco manufactures a variety of fasteners including hex head cap screws in grades 2, 5, and 8, as well as structural fasteners including A325, A490, F1852 tension control bolts and heavy hex structural nuts. Infasco is certified to the ISO 9001-2000 quality standard.

# the steel conference 2006 exhibitors

## InfoSight Corporation

### Booth 547

20700 US Highway 23  
PO Box 5000  
Chillicothe, OH 45601  
Ph: 740.642.3600  
Fax: 740.642.5001

[www.infosight.com](http://www.infosight.com)

InfoSight provides solutions with their tags, products, and systems for on-line, automatic product marking along with manual identification for various industries including steel fabrication, galvanizing, power plants, automotive, etc. Reliable identification of products through company processes is essential. InfoSight has a unique tagging system that survives hot-dip galvanizing. "We barcode difficult stuff."

## Infra-Metals Co.

### Booth 317

4501 Curtis Ave  
Baltimore, MD 21225  
Toll Free: 800.235.3979  
Fax: 410.355.9395

[www.infra-metals.com](http://www.infra-metals.com)

Infra-Metals Co. is a full-service carbon steel service center with locations in Wallingford, CT; Marseilles, IL; Petersburg, VA; Tampa, FL; and Hallandale Florida and a sales office in Langhorne, PA. Infra-Metals stocks a wide range of beams, tubes, channels, and carbon plate in various grades, as well as all mini-mill products. Processing capabilities include burning machines (both oxy and plasma), saws with capacity to 44", cambering, and straightening. For more information, contact the location nearest to you.

## International Paint, LLC

### Booth 373

6001 Antoine Dr  
Houston, TX 77091  
Ph: 713.682.1711  
Fax: 713.684.1514

[www.international-pc.com](http://www.international-pc.com)

International Paint LLC is a leading global provider of high performance coatings products for over 25 years. International Paint LLC offers an extensive range of high performance coatings for the oil, gas, chemical processing, power, paper and pulp, rail, steel structure, mining, and marine industries.

## Ironworker Management Progressive Action Cooperative Trust (IMPACT)

### Booth 552

1750 New York Ave  
NW Lobby  
Washington, D.C. 20006  
Ph: 202.393.1147  
Fax: 202.393.1507

[www.impact-net.org](http://www.impact-net.org)

A Labor-Management Taft Hartley Trust whose primary mission is to expand job opportunities for union ironworkers and their signatory contractors through progressive and innovative labor management cooperative programs.

## J. B. Long, Inc.

### Booth 258

110 W Arch St, Suite 214  
Fleetwood, PA 19522  
Ph: 610.944.8840  
Fax: 610.944.0789

[www.jblong.com](http://www.jblong.com)

J. B. Long, Inc. has supplied structural steel and miscellaneous iron details to the fabrication industry for over 20 years. The firm is certified under the NISD Quality Procedures Program. Sixteen detailers of a staff of 25 are certified under the NISD Individual Detailer Certification program. Detailers primarily use Steel Logic (an AutoCAD-based detailing package) and Xsteel to create details. J. B. Long, Inc. focuses on small commercial projects near 500 tons, while not precluding the occasional larger project.

## Kubes Steel, Inc.

### Booth 531

930 Arvin Ave  
Stoney Creek, ON L8E 5Y8, Canada  
Ph: 877.327.8357  
Fax: 905.643.4003

[www.kubesteel.com](http://www.kubesteel.com)

There is no better measure of your company's success than the success experienced by your customers. Kubes Steel, Inc. is proud of the service we offer to the steel fabrication industry as Canada's premier provider of structural, section rolling, forming, and prefabrication services. We offer Canada's largest multi-section roll and specialized section bending capacity, which is among the best in North America. Visit us at Booth 531 for complete information.



**KUBES** STEEL  
WHERE METAL TAKES SHAPE

## LeJeune Bolt Company

### Booth 455

3500 West Highway 13  
Burnsville, MN 55337  
Toll Free: 800.872.2658  
Fax: 952.890.3544

[www.lejeunebolt.com](http://www.lejeunebolt.com)

Get exactly what you need: Our inventory is the most comprehensive in the industry, ensuring high fill rates for orders of any size. When you need it: We provide same-day shipment from multiple locations, with custom packaging and electronic certifications. With complete satisfaction: We are a key supplier to some of the most recognizable and significant projects in the world. Our lines include structural fasteners, tools and equipment, anchors/threaded rod, stud welding products and equipment, and industrial/OEM fasteners.

## Lincoln Electric

### Booth 364

22801 St Clair Ave  
Cleveland, OH 44117  
Ph: 216.481.8100  
Fax: 216.486.1751

[www.lincolnelectric.com](http://www.lincolnelectric.com)

The Lincoln Electric Company of Cleveland, Ohio is the world leader in the design and manufacture of arc welding equipment and consumables, robotic welding systems, and plasma and oxy-fuel cutting equipment.

## Lincoln Structural Bolt

### Booth 560

5600 N 58th Ct #2  
Lincoln, NE 68507  
Ph: 402.464.4433  
Fax: 402.464.4855

[www.lincbolt.com](http://www.lincbolt.com)

Lincoln Structural Bolt is an ISO 9001:2000 registered distributor of structural fasteners including ASTM bolt standards A307, A325, A325M, A449 and A490. We stock grade A563 DH, DH3, C, C3 and A194 2H nuts; F844, F436 types 1 and 3, beveled and load indicating washers; tension control bolts, metric products, expansion anchors, and all thread rods. Full certifications and rotational capacity tests are offered at no cost. Custom labeling provided to customer specification.

## Lindapter North America, Inc.

### Booth 571

3924A Varsity Dr  
Ann Arbor, MI 48108  
Ph: 888.724.2323  
Fax: 734.677.2339

[www.lindapterna.com](http://www.lindapterna.com)

Lindapter North America, Inc. provides a complete line of structural steel clamping systems. We provide free design services for clamped structural steel connections. Our products and designs

are used for beam-to-beam connections, tube steel connections, grating and floorplate connections, and service supports. Lindapter products are used for mezzanines, conveyors, mono-rails, rigging, fall protection, support beams, and virtually any structural steel connection.

## Lohr Structural Fasteners, Inc.

### Booth 424

2355 Wilson Rd  
Humble, TX 77396  
Ph: 281.446.6766  
Fax: 281.446.7805

[www.lohrfasteners.com](http://www.lohrfasteners.com)

Stop by Lohr Fasteners booth and see the patented Lohr SmartHex™ TC, the thick washer face 1-1/8 A490 SmartHex™, and our newest product, the Lohr Hex Traceables™, all with our exclusive head "ID" code. At Lohr, we are committed to total customer support. Let our experienced staff help ensure that your next project goes smoothly. Look for the motorcycles and stop by to see why Lohr Fasteners is the leader in tension control fasteners.



## LTC, Inc.

### Booth 273

817 Bainbridge St  
PO Box 577  
La Crosse, WI 54602  
Ph: 608.784.2300  
Fax: 608.785.2003

[www.ltcsteeldetailers.com](http://www.ltcsteeldetailers.com)

LTC is a structural steel detailing company that provides exceptionally accurate shop drawings for commercial and industrial buildings. These drawings are provided for the steel fabrication industry, with realistic and timely schedules. Fabricators realize additional value as LTC's preparations generate conformity to each fabricator's shop standards and detailing styles.

## Mazak Optonics Corporation

### Booth 669

140 E. State Parkway  
Schaumburg, IL 60173  
Ph: 847.252.4500  
Fax: 847.252.4599

[www.mazaklaser.com](http://www.mazaklaser.com)

Mazak Optonics Corporation manufactures and distributes 5-axis tube and pipe lasers with automation. Visit our booth to see how we have utilized our expertise in this field to develop a unique, new, and patented method of producing laser cut "space frame" truss and support column components. The first utilization comes at Mazak's own International Technology Center. Mazak's method provides exceptional face-to-face component strength and squareness, and saves fabrication and erection lead times, while reducing labor skill levels.



## Metals USA

### Booth 370

50 Cabot Blvd  
Langhorne, PA 19047  
Toll Free: 800.523.3340  
Fax: 267.580.2121

[www.metalsusa.com](http://www.metalsusa.com)

Metals USA operates steel service centers throughout the U.S. We inventory, process, and distribute a variety of construction-related steel products in all grades. Our inventories of shapes, bars, plates, and hollow structural members are commonly used in building and bridge applications. Services include cutting to length, tee splitting, cambering, forming, connection materials, and project management. Metals USA inventories, combined with tailored services and know-how, provide steel fabricators with supply solutions supporting schedule requirements.

# 2006 exhibitors the steel conference

## Mi-Jack Products, Inc.

**Booth 642**  
3111 West 167th St  
Hazel Crest, IL 60429  
Ph: 708.596.5200  
Fax: 708.225.2312

[www.mi-jack.com](http://www.mi-jack.com)

Mi-Jack Products manufactures Travelift cranes, a self-propelled, rubber tired diesel-driven gantry crane. The Travelift has four-point stability and is able to carry capacities ranging from 15 to 325 tons. Travelifts can be customized to your particular application and needs. For more information, call 708.596.5200, or e-mail [traveliftinfo@mi-jack.com](mailto:traveliftinfo@mi-jack.com).

## Moore Erection L.P.

**Booth 371**  
19921 FM 2252  
Garden Ridge, TX 78266  
Ph: 210.648.7461  
Fax: 210.648.1340

[www.meci-steel.com](http://www.meci-steel.com)

Moore Erection L.P. is a "full service" steel contractor offering erection of structural and miscellaneous steel, as well as tiltwall erection. A leading builder for Ceco Building Systems.

## National Council of Structural Engineers Association

**Booth 678**  
645 N. Michigan Avenue, Suite 540  
Chicago, IL 60611  
Ph: 312.649.4600  
Fax: 312.649.5840

[www.ncsea.com](http://www.ncsea.com)

The National Council of Structural Engineers Associations (NCSEA) is a non-profit federation of state and regional structural engineers associations in the United States and Canada. The purpose of NCSEA is to advance the practice of structural engineering and, as the national voice for practicing structural engineers, protect the public's right to safe, sustainable, and cost-effective buildings, bridges, and other structures.

## National Institute of Steel Detailing (NISD)

**Booth 269**  
7700 Edgewater Dr, Suite 670  
Oakland, CA 99621-3022  
Ph: 510.568.3741  
Fax: 510.568.3781

[www.nisd.org](http://www.nisd.org)

The National Institute of Steel Detailing (NISD) is an international association that advocates, promotes, and serves the interests of the steel detailing industry. The object of the institute's programs and documents is to improve detailers' knowledge, verify their skills, and qualify their ability to manage properly detailed projects, as well as to open a window to the world for its members.

## National Steel Bridge Alliance (NSBA)

**Booth 562**  
One East Wacker Dr, Suite 700  
Chicago, IL 60601  
Ph: 312.670.7010  
Fax: 312.670.5403

[www.nsbaweb.org](http://www.nsbaweb.org)

The National Steel Bridge Alliance is a non-profit alliance of companies and individuals who are dedicated to developing and promoting the best in steel bridge design and construction.



## Navigant Consulting, Inc.

**Booth 366**  
101 Marietta Street NW, Suite 2300  
Atlanta, GA 30303  
Ph: 404.524.7707  
Fax: 404.524.8520

[www.navigantconsulting.com](http://www.navigantconsulting.com)

Navigant Consulting has one of the world's largest and most respected teams of consulting professionals serving the construction industry. We have specialized knowledge and hands-on expertise in real estate, project management, architecture, engineering, CPM scheduling, cost estimating, construction accounting, claims pricing, and economic damages. Clients rely on us for project risk management strategies, as well as insightful analysis of technical, schedule, and cost issues; standards of practice; and effective expert testimony and litigation support services.

## Nelson Stud Welding, Inc.

**Booth 567**  
7900 W Ridge Rd  
Elyria, OH 44036  
Ph: 440.329.0400  
Toll Free: 800.633.9353  
Fax: 440.329.0492

[www.nelsonstudwelding.com](http://www.nelsonstudwelding.com)

Nelson offers new, extra-long cold-formed shear connector and anchor studs meeting AWS, AISC, and ASSHTO specifications. They eliminate more expensive alternatives such as piggy-backing or using expensive, hot-forged studs. Nelson also will demonstrate the Nelweld stud welding system. The system can monitor and/or adjust more than 30 welding parameters for the highest quality and most reliable stud welds available. The unique process monitoring will also be demonstrated, assuring a quality weld every time, with complete traceability of all welds on a project.

## New Millennium Building Systems

**Booth 218**  
6115 County Road 42  
Butler, IN 46721  
Ph: 260.868.6000  
Fax: 260.868.6002

[www.newmill.com](http://www.newmill.com)

First-rate steel joist and deck products are not the only consideration when choosing a supplier. In fact, lots of companies make quality products, but the overall service to you is New Millennium's number one priority. We have a combined work experience of 150+ years, two facilities, and new plant acquisitions to facilitate your needs. Timely quotes, on-time deliveries, astute professional engineering support, inspired logistics, and resourceful problem solving at all levels are attributes we possess for successful business partnerships.

## Nicholas J. Bouras, Inc.

**Booth 339**  
25 DeForest Ave  
Summit, NJ 07902  
Ph: 908.277.1617  
Toll Free: 800.631.1215  
Fax: 908.277.1619

[www.njb-united.com](http://www.njb-united.com)

Nicholas J. Bouras, Inc. is the sales, engineering, and detailing subsidiary of Bouras Industries, Inc., an integrated manufacturer of steel construction products with plants and sales offices in 16 states. United Steel Deck, Inc., Bouras's cold-formed products subsidiary, manufactures Steel Deck Institute-specified steel floor and roof decking, as well as metal siding and roofing products in three strategically located facilities: South Plainfield, NJ; Peru, IL; and Rock Hill, SC. Bouras's joist-manufacturing subsidiary, The New Columbia Joist Company, located in central Pennsylvania, manufactures Steel Joist Institute-specified K, LH, and DLH series joists, joist girders, and specialty trusses. ABA Trucking Corp. is Bouras's transportation services subsidiary, providing on-time deliveries of all of their products. Nicholas J. Bouras, Inc. and their manufacturing affiliates have been providing superior construction products, engineering, and customer service for over 40 years.

## Nitto Kohki, USA, Inc.

**Booth 616**  
4525 Turnberry Dr  
Hanover Park, IL 60133  
Ph: 630.924.9393  
Toll Free: 800.323.8828  
Fax: 630.924.0303

[www.nittokohki.com](http://www.nittokohki.com)

Nitto Kohki is a leading manufacturer of automatic feed magnetic base drills that use self-regulated feed systems to optimize cutting performance with a number of safety features. Using Jetbroach carbide tipped annular cutters can significantly increase production while reducing labor hours and hazardous work. Please visit our booth for a complete demonstration. We also manufacture many other steel working tools including portable hydraulic punches, bevelers, and pneumatic and electric power tools.



## Non-Destructive Testing Group, Inc.

**Booth 550**  
8181 Broadmoor Ave SE  
Caledonia, MI 49316  
Ph: 616.891.3570  
Fax: 616.891.3565

[www.nondestructivetesting.com](http://www.nondestructivetesting.com)

NDT Group is a diversified inspection and testing company that offers full-service production NDT laboratories, a mechanical testing laboratory, and inspection crews throughout North America. Specialty areas include: structural steel building fabrication and erection inspection, certified weld inspection, NDT Level II inspection, tank inspection, concrete inspection, borescopic inspection, and weld procedure and welder qualification verifications. Specialized equipment includes: a 1.2 million lb tensile machine, a ground penetrating radar, a cobalt shooting cell, and a real time micro-focus x-ray.

## North American Galvanizing Company

**Booth 351**  
2250 E 73rd, Suite 300  
Tulsa, OK 74136  
Ph: 918.488.9420  
Fax: 918.488.8172

[www.nagalv.com](http://www.nagalv.com)



North American Galvanizing Company is a leading provider of coating for corrosion protection. North American Galvanizing Company currently conducts its galvanizing and coating business through a network of plants located in Canton, Denver, Houston, Hurst, Kansas City, Nashville, St. Louis, Louisville, and Tulsa. Hot dip galvanizing provides metal corrosion protection for many product applications used in commercial, construction and industrial markets. NAGC is headquartered in Tulsa, Oklahoma.



## NTC America Laser Group

**Booth 620**  
24495 Hathaway Dr.  
Farmington Hills, MI 48335  
Toll Free: 800.NTC.LASR  
Fax: 248.478.4104

[www.ntclaser.com](http://www.ntclaser.com)

NTC America Laser Group is a world leader in laser cutting technology. From five axis lasers for formed parts, pipe, tubing, channel, or I-beams to large envelope laser cutting beds for the tough demands of thick plate, heavy stock, and complex shapes. We have a machine to meet your laser cutting needs.

## Nucor Corporation

**Booth 416**  
2100 Rexford Rd  
Charlotte, NC 28211  
Ph: 704.366.7000  
Fax: 704.362.4208

[www.nucor.com](http://www.nucor.com)

Nucor has operating facilities in 15 states. Products include carbon and alloy steel bars, beams, sheet, and plate; steel joists and joist girders; steel deck; cold finished steel; steel fasteners; metal building systems; and light gauge steel framing.



# the steel conference 2006 exhibitors

## Nucor Fastener - Indiana

### Booth 416

PO Box 6100  
6730 County Rd 60  
St. Joe, IN 46785  
Ph: 260.337.1600  
Toll Free: 800.955.6826  
Fax: 260.337.1726

[www.nucor-fastener.com](http://www.nucor-fastener.com)



Manufacturer of 100% made in the USA carbon and alloy steel hex head cap screws, heavy hex structural bolts, dome head

Tru-Tension® tension control assemblies, nuts and build-to-print specials in inch and metric sizes in various grades with finishes and thread coatings to meet fastening requirements.

## Nucor - Vulcraft Group

### Booth 416

PO Box 186  
Grapeland, TX  
75844  
Ph: 936.687.4665  
Fax: 936.687.4290

[www.vulcraft.com](http://www.vulcraft.com)

Steel joists, joist girders, composite floor joists, special profile steel joists, and floor and roof deck. Vulcraft facilities are located in South Carolina, Nebraska, Alabama, Texas, Indiana, Utah, and New York.



## Nucor-Yamato Steel Company

### Booth 416

PO Box 1228  
Blytheville, AR  
72316  
Ph: 870.762.5500  
Toll Free: 800.289.6977  
Fax: 870.763.9107

[www.nucoryamato.com](http://www.nucoryamato.com)



Steel manufacturer of wide-flange structural steel shapes, H-piles, sheet piling, angles, channels, and car building shapes. Grades include ASTM A36, ASTM A572, ASTM A588, ASTM A690, ASTM A709, and ASTM A992.

## Ocean Machinery, Inc.

### Booth 639

672 NW 15th Way  
Ft. Lauderdale, FL 33309  
Ph: 954.351.0899  
Toll Free: 800.286.3624  
Fax: 954.351.9472

[www.oceanmachinery.com](http://www.oceanmachinery.com)

Ocean Machinery is a specialist steel fabricating machinery company dedicated to improving the efficiency of the small to medium steel fabricator—reducing man hours per ton, increasing capacity without adding labor, and improving overall profitability. With over

150 installations in the USA in the past four years alone, Ocean Machinery has rapidly and forever changed the structural steel



fabricating landscape. Ocean Machinery offers a vast array of solutions for all aspects of structural steel fabrication, from CNC beam lines, CNC angle lines, and CNC coping lines, to large dual-column, dual-miter band saws and modular material handling equipment.



## Omnitech Associates, Inc.

### Booth 461

PO Box 20792  
Oakland, CA 94620  
Ph: 510.658.8328  
Fax: 510.595.0373

[www.desconplus.com](http://www.desconplus.com)

Omnitech Associates develops the connection design software DesconWin and DesconBrace. ASD and LFRD versions of both programs have been updated for the AISC 2005 specification and are available in US customary and metric units. DesconWin designs beam shear and moment connections to girders, W and HSS columns, FEMA-350 connections, and beam and column splices. DesconBrace designs connections of diagonal, chevron, K, and knee braces. Both programs generate detailed calculation reports, drawings, and DXF files.

## P2 Programs

### Booth 543

PO Box 1000  
Dripping Springs, TX 78620  
Ph: 512.858.2007  
Toll Free: 800.563.6737  
Fax: 512.858.2008

[www.p2programs.com](http://www.p2programs.com)

P2 Programs sets the industry standard when it comes to bar coding and tracking your structural steel. With 20 years' experience using Auto-ID technology to improve manufacturing process tracking and warehouse operations, P2 Programs is the company with the knowledge you should look to for answers. With our core products, industry contacts, and hardware suppliers, you could not make a better decision than to call us first to help solve your information road blocks.

## Pat Mooney, Inc.

### Booth 851

502 S Westgate St  
Addison, IL 60101  
Ph: 630.543.6222  
Fax: 630.543.5584

[www.patmooneysaws.com](http://www.patmooneysaws.com)

Pat Mooney, Inc., "The Saw Company," specializes in metal sawing cutoff operations. This year marks our 56th year in the metal sawing business. Our company operates the national sales and service center for Nishijimax CNC carbide cutoff machines; FMB precision mitre and gear drive saws; and PMI precision non-ferrous sawing machines. We also have two saw blade service centers for all your saw blade requirements.

## PDM Steel Service Centers, Inc.

### Booth 573

PO Box 310  
Stockton, CA 95201  
Ph: 209.943.0555  
Fax: 209.943.1606

[www.pdmsteel.com](http://www.pdmsteel.com)

PDM Steel Service Centers, Inc. is a heavy-carbon service center organization with seven locations serving Northern California, Nevada, Utah, Oregon, and Washington, and parts of Idaho, Wyoming, and Colorado.

## Peddinghaus Corporation

### Booth 615

300 N Washington Ave  
Bradley, IL 60915  
Ph: 815.937.3800  
Fax: 815.937.4003

[www.peddinghaus.com](http://www.peddinghaus.com)



Peddinghaus Corporation focuses on providing efficient solutions for shop fabrication challenges. Utilizing today's technologies, Peddinghaus has delivered four new machine tools to increase shop fabrication productivity. These include the new Peddinghaus "Advantage" structural drill, a patented miter band saw, the "Powerhaus" plate processing system, and the latest Anglemaster detail "Champion." These tools provide the fastest floor-to-floor time in any shop environment, and remain the benchmark in the steel construction industry.



## Peterson Beckner Industries, Inc.

### Booth 222

1310 Spears Rd  
Houston, TX 77067  
Ph: 281.872.7722  
Fax: 281.716.4750

[www.petersonbeckner.com](http://www.petersonbeckner.com)

Peterson Beckner Industries, Inc. is a national structural steel erector with its corporate office located in Houston, TX. We pursue large industrial, commercial, and institutional projects throughout the United States and the Caribbean. We are recognized by AISC as a Certified Advanced Steel Erector and have developed and implemented an award winning safety program. We have the financial strength and the technical expertise to be your steel erector of choice.

## PPG Industries, Inc.

### Booth 523

One PPG Place 375  
Pittsburgh, PA 15272  
Ph: 412.434.3131  
Fax: 412.434.3991

[www.ppg.com](http://www.ppg.com)

PPG Industries, the largest United States-based supplier of coatings in the world, will be exhibiting its line of fire protective coatings, which are designed to protect structural steel from fire and explosions in both hydrocarbon and cellulosic fire scenarios. PPG will also be promoting its line of high performance coatings systems.

## Quality Management Company, LLC

### Booth 377

One East Wacker Dr, Suite 700  
Chicago, IL 60601  
Ph: 312.670.7520  
Fax: 312.670.9030

[www.QMConline.com](http://www.QMConline.com)



Quality Management Company provides independent, quality audits for the American Institute of Steel Construction's Certification Program. With experience in fabrication and/or erection, QMC auditors conduct rigorous examinations to evaluate a company's quality management system (rather than the specific prod-



# 2006 exhibitors the steel conference

uct). This process provides specifying engineers with the assurance that an AISC Certified fabricator or erector encompasses the proper procedures, personnel, organization, experience, knowledge, equipment, capability, and commitment needed to successfully fabricate or erect their projects.

## The "Québec Connection"

**Booth 253**  
127 Crémazie West  
Montréal, QC H2N 1L5, Canada  
Ph: 866.677.6161  
Fax: 514.748.9112  
[www.quebecconnection.com](http://www.quebecconnection.com)



The power of 100 detailers, using 100% 3D modeling under SDS/2 and X-Steel, coupled with expert management by "old school veterans" guarantees accuracy, on-time deliveries, and efficient details. We know our steel, the way North Americans do it! We can handle any size or type of job. Maximize your profits using the "experts." Meet them at Booth 253.

## Quincy Joist Company

**Booth 252**  
520 S Virginia St  
Quincy, FL 32351  
Ph: 850.875.1075  
Toll Free: 800.277.1075  
Fax: 850.875.1277  
[www.quincyjoist.com](http://www.quincyjoist.com)

Quincy Joist Company is a leader in manufacturing open web steel joists, long spans, and joist girders and is a member in good standing of the Steel Joist Institute. Quincy Joist Company is committed to excellence in customer service, quality products, superior engineering, and on-time deliveries. These attributes equal value. It's the combination of our state-of-the-art machinery and equipment coupled with our expert staff, trained and experienced in every aspect of steel joist manufacturing, that gives us the competitive edge. Our engineering department is capable of handling the most mundane to the most complex structures with a reputation that is second to none. We have multi-state operations primarily focused in the U. S. Sunbelt. You can visit us at [www.quincyjoist.com](http://www.quincyjoist.com) or contact us at 800.277.1075 for further information.

## Quindata Ltda.

**Booth 327**  
Dr. Torres Boonen 805  
Providencia Santiago, Chile  
Ph: 56.2.2236822  
Fax: 52.2.205641  
[www.quindata.cl](http://www.quindata.cl)

Quindata is a steel detailing services company with over 18 years of experience in projects for different markets such as mining and metals, power, infrastructure, commercial, and many others. Our highly experienced staff and the latest steel detailing technology, including SDS/2 and X-Steel software, allow us to guarantee the success of any project.

## RAM International, a Bentley Solutions Center

**Booth 433**  
2744 Loker Ave West  
Carlsbad, CA 92010  
Ph: 760.431.3610  
Toll Free: 800.726.7789  
Fax: 760.431.5214  
[www.bentley.com/ram](http://www.bentley.com/ram)

RAM International provides totally integrated productivity solutions for the structural design office, including the RAM Structural System for building analysis and design; RAM CADstudio construction document management system for fully integrated design and drafting; RAM Advanse for general purpose analysis and design with utility tools such as retaining wall and continuous beam design; RAM Perform for nonlinear pushover and blast analysis; and RAM Connection for fully integrated steel connection design for shear, moment, and gusset plate connections.

## Real Technology, LLC

**Booth 259**  
2640 Fountainview Dr, Suite 126  
Houston, TX 77057  
Ph: 832.251.9400  
Fax: 713.456.2513

[www.realtechcad.net](http://www.realtechcad.net)

Real Technology provides high quality and cost effective detailing services to structural and miscellaneous steel fabrication, engineering, and construction firms. We use applications such as X-Steel (Tekla) and AutoCAD to facilitate accurate and timely delivery of detailed drawings. We are a customer-driven organization that believes in going to great lengths to ensure customer satisfaction. Call us at our Houston office for a quote on your next project.

## Research Engineers International, a Bentley Solutions Center

**Booth 441**  
22700 Savi Ranch Parkway  
Yorba Linda, CA 92887  
Ph: 714.974.2500  
Fax: 714.974.4771

[www.bentley.com/STAAD](http://www.bentley.com/STAAD)

REI is a world leader in the development and distribution of cost-efficient, leading-edge PC-based civil and structural engineering software solutions for the architectural, civil, construction, transportation, and utility industries. REI licenses its engineering software and solutions to more than 20,000 businesses in 85 countries. Software products include STAAD.Pro, STAAD.etc, STAAD.beava, Sectionwizard, STAAD.foundation, and ADLPipe.

## RISA Technologies

**Booth 343**  
26632 Towne Center Dr, Suite 210  
Foothill Ranch, CA 92610  
Toll Free: 800.332.7472  
Fax: 949.951.5848

[www.risatech.com](http://www.risatech.com)

RISA Technologies develops and supports innovative structural analysis and design software.

Our highly popular applications enable structural engineers to more efficiently and productively conceptualize and design buildings, stadiums, bridges, tanks, towers, racks, conveyors, and most anything else. Static or dynamic, simple or complex, RISA Technologies has the answer. Please stop by our booth and let us show you what we can do for you.



## Ronstan Tension Elements

**Booth 220**  
45 High Point Ave, Suite 2  
Portsmouth, RI 02871  
Ph: 401.293.0539  
Fax: 401.293.0538

[www.ronstan.com/arch](http://www.ronstan.com/arch)

Ronstan is an ISO9001:2000 manufacturer of cable and rod tension elements for architectural design. Cable and rod systems provide an efficient transfer of load and are utilized as "low visual impact" structural solutions. They are engineered and ideal for designs requiring cross-bracing, cantilevering, and truss support. With cable and rod systems up to 4" in diameter, Ronstan can help realize and complement your design. Ronstan's architecturally designed rod systems are "contractor-easy" threaded assemblies for easy installation.

## Roof Products, Inc.

**Booth 646**  
7616 Lee Highway  
Chattanooga, TN 37421  
Toll Free: 800.262.6669  
Fax: 423.892.2107

[www.rpicurbs.com](http://www.rpicurbs.com)

Roof Products, Inc. has specialized in manufacturing prefabricated structural roof curbs and other roof accessories nation-



Your steel is structural, why aren't your roof curbs?

wide for more than 40 years. We have been the problem solver for the industry, as well as the trainers for architects and engineers in the proper detailing and specifying of prefabricated roof curbs. The biggest money saving feature: our structural curbs eliminate most supporting angles for all roof mounted equipment because of internal reinforcing and continuous welded corners.

## SAFI Quality Software, Inc.

**Booth 360**  
3393 ch Sainte-Foy  
Sainte-Foy, QC G1X 1S7, Canada  
Ph: 418.654.9454  
Fax: 418.653.9475

[www.safi.com](http://www.safi.com)

SAFI is integrated structural software for structural engineering. It is utilized for almost all kinds of structures, buildings, bridges, towers, and commercial and industrial applications. SAFI offers three levels of technologies for the steel industry. Level 1 is the Steel Calculator, to verify or design steel members. Level 2 is SAFI Steel, for the design of complex structures. Level 3 is the new Virtual Steel Buildings, which is a unique model with configurable views. VSB technology integrates the design processes of estimation, structural design, connections, detailing, fabrication, and, gradually, other complementary disciplines.

## St. Louis Screw & Bolt

**Booth 548**  
Box 470037  
6900 N Broadway  
St. Louis, MO 63147  
Ph: 314.389.7500  
Fax: 314.389.7510

[www.stlouisscrewbolt.com](http://www.stlouisscrewbolt.com)



St. Louis Screw & Bolt is the oldest structural bolt manufacturer in the USA. The company specializes in direct sales to the steel fabricator of A307, A325, and A490 structural bolts produced in their St. Louis plant. Additionally, they are a very large supplier of tension control bolts and electric torque wrenches. They stock common items that a steel fabricator might need to erect a building, such as expansion anchors, wedge bolts, and adhesives. Orders are packed to project requirements.

## Schuff Steel Company

**Booth 676**  
420 S. 19th Ave  
Phoenix, AZ 85009  
Ph: 602.252.7787  
Fax: 602.251.0335

[www.schuff.com](http://www.schuff.com)

Founded as a turnkey steel fabrication and erection company in 1976, Dave and Scott Schuff's vision of a total steel contractor has become a household name within the steel industry. While wide market growth continued in the design-build/assist market, our in-house detailing, engineering, fabrication, and erection expertise allowed Schuff Steel Company to emerge as the largest steel fabricator and erector in the United States. Let us show you how "We Make It Happen" on your next project.

## Seismic Structural Design Associates, Inc.

**Booth 465**  
791 East Washington Blvd  
Los Angeles, CA 90021  
Ph: 213.494.0446  
Fax: 213.741.8620

[www.slottedweb.com](http://www.slottedweb.com)

SSDA combined material science, structural engineering, and seismic research to invent SlottedWeb technology. The patented SlottedWeb moment-frame connection produces significant savings while dramatically increasing the structural integrity of any building. The ease of implementation reduces fabrication costs, welding time, and erection time for new or retrofit projects. Please visit our booth for a more detailed explanation of savings and a video demonstration of the strength of this AISC-, ICC-, and OSHPD-certified connection.

# the steel conference 2006 exhibitors

## Sen Consulting Corp.

### Booth 272

150 Old Country Rd, Suite 206  
Mineola, NY 11501  
Ph: 516.248.9501  
Fax: 516.248.9502

[www.sen-group.com](http://www.sen-group.com)

Sen Consulting Corp. is a detailing firm that has detailed over 400 projects in the last five years. Projects in New York, New Jersey, Connecticut, and Pennsylvania have varied from small staircases to industrial buildings. The company has offices in New York and Pennsylvania that are managed by qualified detailers with over ten years of experience and knowledge of AutoCAD and X-steel. The company does private and government jobs.

## The Sharon Companies, Ltd.

### Booth 618

959 Lake Rd  
Medina, OH 44256  
Ph: 330.723.3225  
Toll Free: 800.792.0129  
Fax: 330.723.2350

[www.sharonstair.com](http://www.sharonstair.com)

Specify the best—specify Sharon Drop-In Stairs. Crafted by the pioneer in “pre-engineered” stair systems, Sharon Drop-In Stairs are a manufactured building component, factory controlled for value and quality. Sharon engineering expertise, production techniques, and craftsmanship keep stair quality up and costs down. Sharon is a company that’s built to last—with a staff featuring over 750 years accumulated experience and over \$200 million in stairway sales.

## Sherwin-Williams

### Booth 359

101 Prospect Ave  
Cleveland, OH 44115  
Toll Free: 800.524.5979  
Fax: 440.826.1908

[www.sherwin-williams.com/im](http://www.sherwin-williams.com/im)

Nobody has the steel fabrication industry covered quite like Sherwin-Williams. In fact, we offer products and technologies for a wide variety of uses. Products that give you better protection. Products that improve productivity. Products you can trust to last. And with our commitment to innovation, you can be sure we’ll have the products you need for years to come.”

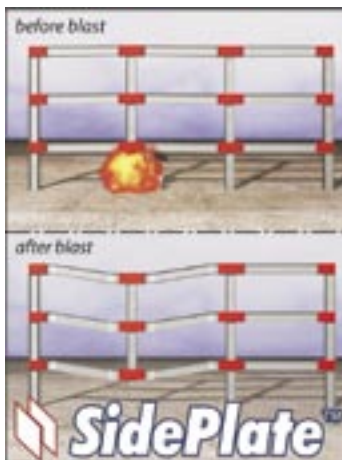
## SidePlate Systems

### Booth 240

23422 Mill Creek Dr, Suite 215  
Laguna Hills, CA 92653  
Ph: 949.305.7889  
Fax: 949.305.6395

[www.sideplate.com](http://www.sideplate.com)

SidePlate Systems, Inc. provides connection design of, and licensing for, the patented SidePlate® moment connection for healthcare, educational, instructional, commercial, and government clients. The connection is used to design steel moment frames for lateral force resistance and progressive collapse mitigation.



## SKM Industries, Inc.

### Booth 368

1012 Underwood Rd  
PO Box 278  
Olyphant, PA 18447  
Ph: 570.383.3062  
Toll Free: 800.851.8464  
Fax: 570.383.9482

[www.skmproducts.com](http://www.skmproducts.com)

SKM Industries, Inc. has been in business since 1980 manufacturing high-quality industrial paint markers. These markers come in various colors and two different style tips—the squeeze-action metal tip and our pump-action non-slip pro rubber grip marker. SKM Industries, Inc. is a woman-owned, minority business and manufactures all of its own products at its new and modern facility located in Olyphant, PA.

## SMI Steel Products/SMI Joist

### Booth 229

2305 Ridge Rd, Suite 202  
Rockwall, TX 75087  
Ph: 800.308.9925  
Fax: 972.772.0882

[www.smisteelproducts.com](http://www.smisteelproducts.com)

[www.smijoist.com](http://www.smijoist.com)

SMI Steel Products and SMI Joist are a subsidiary of Commercial Metals Company. SMI Steel Products is a leading-edge steel manufacturer specializing in the SMARTBEAM®. SMARTBEAMS are ideally suited for long-span composite floor construction or long-span roof applications for architecturally exposed steel. SMI Joist is a leading manufacturer of steel joists and joist girders in North America. With six strategically located manufacturing plants, our commitment is to deliver quality products on time, every time.

## SOFTEK Services Ltd.

### Booth 246

#275 - 13500 Maycrest Way  
Richmond, BC V6V 2N8, Canada  
Ph: 604.273.7737  
Fax: 604.273.7731

[www.csc-softek.com](http://www.csc-softek.com)

Since 1981, SOFTEK Services Ltd. has produced software for structural engineers, establishing an enviable reputation for quality and ease of use. Using the latest technology, we continue to deliver cost-effective and comprehensive solutions. Our newly released S-FRAME® and S-STEEL™ Version 7.0 set new standards for integrated analysis and steel design, featuring a host of innovations including staged construction analysis and physical member modeling. Please visit our booth for more information.

## Southwest Detailers Association

### Booth 264

1143 Rockingham Dr, Suite 112  
Richardson, TX 75080-4327  
Ph: 972.669.3331  
Fax: 972.669.3224

Southwest Detailers Association is a chapter of NISD consisting of Texas and Oklahoma steel detailing firms. This organization is dedicated to the principle that the steel detailer is a professional, who by his education, training, and experience is a vital part of the construction industry, and that his importance to that industry must be recognized.

## Spencer Reed Group, Inc.

### Booth 270

5800 Foxridge Dr, Suite 310  
Mission, KS 66202  
Ph: 913.671.8880 ext. 3050  
Fax: 913.393.0004

[www.srgonesource.com](http://www.srgonesource.com)

SRG specializes in detailing and engineering services for the conventional steel and metal building industries with projects ranging from 5 to 2000 tons using SDS/2 detailing software. We are NISD QPP Certified, have several IDC Certifications, and are a member of AISC. Our diverse expertise and advanced computer technologies provide a resolution for our clients to take on additional work requirements.

## SSDCP, Inc.

### Booth 525

1923-B South Blvd  
Charlotte, NC 28203  
Ph: 704.370.0840  
Fax: 704.358.1801

[www.ssdcp.com](http://www.ssdcp.com)

SSDCP is the most extensive set of detailing programs for AutoCAD you can get. Over 180 automated programs written by a steel detailer with over 40 years of experience. SSDCP programs are parametric—meaning it draws the details based on dimensions you enter—for structural and miscellaneous. SSDCP shows you a picture of what you’re detailing on the screen and asks you to enter dimensions that match the picture. It’s quick and easy! Check us out in San Antonio.

## Steel Cast Connections, LLC

### Booth 549

2658 Walnut Ave SW  
Seattle, WA 98116  
Ph: 206.250.7035  
Fax: 206.622.0115

[www.steelcastconnections.com](http://www.steelcastconnections.com)

We supply the Kaiser Bolted Bracket, which is a steel special moment frame. Installation is fast and simple and the total cost is considerably less than other methods. All field welding is eliminated with this fully bolted installation, and there are no engineering or licensing fees. It consists of a new construction and a retrofit version. Eliminate the high costs of welding related installations on new construction and retrofit upgrades by bolting.

## Steel Erectors Association of America

### Booth 545

2216 W Meadowview Rd, Suite 115  
Greensboro, NC 27407  
Ph: 336.294.8880  
Fax: 413.208.6936

[www.seaa.net](http://www.seaa.net)

The Steel Erectors Association of America (SEAA) is dedicated to advancing the common interests and needs of all engaged in building with steel. The association’s objective in achieving this goal includes the promotion of safety, education, and training programs for steel erector trades; development and promotion of standards; and cooperation with others in activities that impact the commercial construction business.

## Steel Founders’ Society of America

### Booth 551

780 McArdle Dr, Unit G  
Crystal Lake, IL 60014  
Ph: 815.455.8240  
Fax: 815.455.8241

[www.sfsa.org](http://www.sfsa.org)

Steel Founders’ Society of America (SFSa) is a not-for-profit trade association whose mission is to promote and develop steel castings. SFSa’s membership is limited to steel casting producers. We strive to serve by developing new technology, exchanging technical and operating experience, and expanding the steel casting marketplace.

## Steel Joist Institute

### Booth 250

3127 Mr. Joe White Ave  
Myrtle Beach, SC 29577  
Ph: 843.626.1995  
Fax: 843.626.5565

[www.steeljoist.org](http://www.steeljoist.org)

The Steel Joist Institute is a not-for-profit organization. Besides setting standards for the steel joist industry, SJI works closely with major building code bodies throughout the country to help develop code regulations regarding steel joists and Joist Girders. The institute also invests thousands of dollars in ongoing research and offers a complete library of publications and other training and research aids.

# 2006 exhibitors the steel conference

## Steel Projects

### Booth 624

Rue des Frères Lumières  
Vienne Malissol 38200 France  
Ph: 33.474.311.730  
Fax: 33.474.780.410

### [www.steel-projects.fr](http://www.steel-projects.fr)

Steel Projects has long been recognized as one of the leading European software development companies, whose Windows-based modular products offer tremendous time and cost savings to structural steel fabricators in the integration of CAD, CAM, and MIS systems. A new partnership demonstrates the company's commitment to offering its existing customers in the US and Canada a local, hands-on or telephone software support presence.



## Steel Recycling Institute

### Booth 565

680 Andersen Dr  
Pittsburgh, PA 15220  
Ph: 412.922.2772 ext. 206  
Fax: 412.922.3213

### [www.recycle-steel.org](http://www.recycle-steel.org)

The Steel Recycling Institute is an industry association with the mission of promoting and sustaining steel recycling. It is the primary information and technical resource for municipalities, recyclers, businesses, legislators, educators, and other entities interested in steel recycling. The Steel Recycling Institute is a unit of the American Iron and Steel Institute.

## Steel Tube Institute of North American (STINA)

### Booth 662

2000 Ponce De Leon Blvd, Suite 600  
Coral Gables, FL 33134  
Ph: 305.421.6326  
Fax: 305.443.1603

### [www.steeltubeinstitute.org](http://www.steeltubeinstitute.org)

STINA is the associate of North American steel tubing manufacturers. We promote the growth and competitiveness of the industry and its products and provide a forum to inform consumers about the versatility and value of steel tube and pipe.

## SteelCad Consulting Corporation

### Booth 558

110 Timberlachen Cir, Suite 1000  
Lake Mary, FL 32746  
Toll Free: 800.456.7875  
Fax: 800.456.7875

### [www.steelcad.com](http://www.steelcad.com)

SteelCad offers automated steel detailing and fabrication software. SteelCad complies with AISC and CISC standards and detailing methods. It details beams, columns, vertical and horizontal bracing, stairs, and ladders. It produces erection drawings, gather sheets, material lists, cut lists, and production control or CNC data.

## Strand7 Pty. Ltd.

### Booth 554

Suite 1, Level 5  
65 York St  
Sydney, 2000 Australia  
Ph: 61.2.9264.2977  
Fax: 61.2.9264.2066

### [www.strand7.com](http://www.strand7.com)

Develops the Strand7 finite element analysis software—a sensibly priced, Windows native system used for civil, structural, mechanical, and other applications at over 3,000 sites worldwide. Comprises pre-processing (including automatic meshing of CAD models), solvers (linear and nonlinear static, linear and nonlinear dynamic, and heat transfer), post-processing, and powerful API. Fully benchmarked and distributed with detailed verification and theoretical manuals.

## StrucSoft Solutions Inc.

### Booth 425

5375 Paré, Suite 201  
Montreal, QC H4P 1P7, Canada  
Ph: 514.341.9646  
Toll Free: 877.810.7575  
Fax: 514.341.8856

### [www.strucsoftsolutions.com](http://www.strucsoftsolutions.com)

StrucSoft Solutions is the North American distributor of ProSteel 3D, an AutoCAD-based 3D modeling/2D drawing production steel construction application suitable for engineering firms, detailers, and steel fabrication shops—and now offering special functionality for offshore construction. ProSteel 3D is a complete solution for any project, from conceptual design to detailing, fabrication, and erection. ProSteel 3D is supported in North America by a team of experienced professionals.

## Structural Desktop, Inc.

### Booth 362

PO Box 6400  
6106 Highway 59 North  
Van Buren, AR 72956  
Ph: 479.471.5227  
Fax: 479.471.5225

### [www.structuraldesktop.com](http://www.structuraldesktop.com)

Structural Desktop, Inc. produces the program Structural Desktop, an AutoCAD add-in that reads and writes analytical files from STAAD.Pro, RISA 3D, GT STRUDL, and SAP2000. The program creates 2D drawings, 3D models, Architectural Desktop models, and detailed material reports. Up to 80% of contract documents can be generated by an engineer with Structural Desktop, leaving the draftsman to dimension and annotate the drawing. Structural Desktop also translates between analytical files for multiple analysis with the same geometric data.

## Structural Engineer magazine

### Booth 561

One IBM Plaza  
330 N. Wabash, Suite 3201  
Chicago, IL 60611  
Ph: 312.628.5870  
Fax: 312.628.5878

### [www.gostructural.com](http://www.gostructural.com)

*Structural Engineer* is the leading resource for licensed structural engineers who work for private consulting engineering firms and government agencies. Award-winning *Structural Engineer* is the publication relied on for structural design expertise, the latest trends, new product and software applications, and technological innovations.

## Structural Engineering Institute of ASCE

### Booth 244

1801 Alexander Bell Dr  
Reston, VA 20191-4400  
Toll Free: 800.548.2723  
Fax: 703.295.6361

### [www.seinstitute.org](http://www.seinstitute.org)

SEI is a vibrant, 20,000-plus community of structural engineers from around the world. Operating as part of the American Society of Civil Engineers, SEI serves the structural engineering community by developing useful technical publications, championing separate licensing of structural engineers, promoting better business practices, and advocating the interests of the profession. SEI's 140 committees allow members from around the world to work together to improve their profession and enhance public safety.

## Structural Software Consulting

### Booth 537

223 Levis Rd  
Portersville, PA 16051  
Ph: 724.368.8150  
Fax: 724.368.8522

### [www.steelssc.com](http://www.steelssc.com)

SSC FabSuite is a collection of integrated programs to meet the management demands of the steel fabricator. Included programs are: estimating, combining (multing and nesting), inventory control, production control, and purchasing. These programs have been used by hundreds of fabricators over the past 20 years and have been completely rewritten for use with the latest stand-alone and network systems. Please visit us at Booth 537 for a demo.

## Structural Stability Research Council

### Booth 553

301 Butler - Carlton Hall  
Rolla, MO 65409  
Ph: 573.341.6610  
Fax: 573.341.4476

### [www.stabilitycouncil.org](http://www.stabilitycouncil.org)

The Structural Stability Research Council provides support and technical counsel for stability research, holds regular meetings to report on research activities, and publishes the definitive work, "Guide to Stability Design Criteria for Metal Structures." The SSRC Annual Stability Conference provides up-to-date information and identifies where efficiencies exist in present understanding of structural behavior. Conference proceedings represent a primary source of highlights of the latest solutions to structural problems before they are eventually published in technical journals.

## Stud Welding Associates, Inc.

### Booth 636

41515 Schaden Rd  
Elyria, OH 44035  
Toll Free: 800.874.7860  
Fax: 440.324.3301

### [www.studwelding.com](http://www.studwelding.com)

Stud Welding Associates offers a full line of shear connectors, headed anchors, deformed bars, weld studs, stud welding equipment, and accessories backed up with a network of product and service warehouses across the country. Ask for a demonstration of the Rapid Ferrule Tool Dispenser, a simple, cost-effective method for setting ferrules on the job.

## Taylor Devices, Inc.

### Booth 236

90 Taylor Dr  
North Tonawanda, NY 14120  
Ph: 716.694.0800  
Fax: 716.695.6015

### [www.taylordevices.com](http://www.taylordevices.com)

Taylor Devices is the world's leading manufacturer of fluid viscous dampers, lock-up devices, shock transmission units, shock absorbers, cable dampers, and custom tuned mass damping systems. These devices and systems can be used to protect building and bridge structures from the devastating vibrations caused by earthquakes, wind, hurricanes, and other vibrational disturbances.

## TDS Industrial Services, Ltd.

### Booth 325

201 - 3050 Quebec St  
Prince George, BC V2L 5H4, Canada  
Ph: 250.561.1646  
Fax: 250.562.8549

### [www.tdsindustrial.com](http://www.tdsindustrial.com)

Since 1979, TDS has been detailing structural and miscellaneous steel for commercial, institutional, and industrial projects. All steel detailing is 100% automated using the StruCAD 3D modeling system. Please visit our web site for more detailed information.

## Techflow Engineers (India) Pvt. Ltd.

### Booth 260

Bldg No. 2 (A-3)  
Unit - 415 Sector No. 1  
Millennium Business Park  
Mahape, Navi Mumbai 400 701, India  
Ph: 91.22.27782401  
Ph: 91.22.27782402

### [www.techflowengg.com](http://www.techflowengg.com)

TechFlow Engineers is one of India's leading 3D structural detailing and design companies, serving globally. We are one of the experienced users of "Tekla Structures" (formerly Xsteel) 3D detailing software. We are uniquely placed to provide worldwide companies competitively priced integrated 3D detailing and design services with the best possible quality commitments. Recently, we completed one of the prestigious jobs for Walt Disney Imagineering for Steel Concepts USA.

# the steel conference 2006 exhibitors

**Tekla**  
**Booth 333**  
 600 Town Park Ln, Suite 175  
 Atlanta, GA 30144-5809  
 Toll Free: 877.TEKLA.OK  
 Fax: 770.919.0574  
[www.tekla.com](http://www.tekla.com)



Tekla software streamlines the entire structural process from conceptual design to detailing, fabrication, and construction. Innovative tools provide you with the ability to design and create an intelligent 3D building model of any size or complexity with ease and precision. Tekla Structures allows for real-time collaboration between users across industries and project phases. Tekla products are used in over 70 countries around the world.

**Triodetic Spaceframes, Inc.**  
**Booth 248**  
 2753 Fenton Rd  
 Ottawa, ON K1T 3T8, Canada  
 Ph: 613.822.2922  
 Fax: 613.822.1375  
[www.triodetic.com](http://www.triodetic.com)

Design, manufacture, and installation of custom tube framing and cladding for architectural and industrial buildings. Specializes in curved structures, creative geometry, long spans, abnormal loadings, and difficult sites. Our 40 years of international success and expertise assist owners, architects, and contractors in achieving design intent, construction deadlines, project budget, and service life integrity.

**TurnaSure LLC**  
**Booth 648**  
 340 E Maple Ave - #305  
 Langhorne, PA 19047  
 Ph: 215.750.1300  
 Toll Free: 800.525.7193  
 Fax: 215.750.6300  
[www.turnasure.com](http://www.turnasure.com)

TurnaSure has the most comprehensive range of direct tension indicator washers (DTIs) in the world. The firm's predecessors were the inventors in 1962, and first introduced this simple and

reliable method of assuring proper tension in structural bolts at the AISC convention 30 years ago. Over the past decade, TurnaSure has reengineered DTIs from the ground up. TurnaSure's DTIs are now the most accurate and reliable on the world market. They meet and exceed the ASTM Standards.

**V.M.Informatics**  
**Booth 267**  
 K-1497 Palam Vihar Guragon  
 Haryana, India  
 Ph: 91.124.4072096  
 Fax: 91.124.5522638  
[www.vminformatics.com](http://www.vminformatics.com)

Steel detailers working with 3D software and AutoCAD to detail steel, joist details, and wood nailers. Fifteen detailers and four checkers can cut down your detailing costs. Five years of experience working in the US and the UK.

**Valmont Tubing**  
**Booth 563**  
 Hwy 275  
 Valley, NE 68064  
 Toll Free: 800.825.6668  
 Fax: 402.359.4481  
[www.valmont.com](http://www.valmont.com)

Valmont Tubing is a welded steel tubing manufacturer located in Valley, NE. Valmont is capable of producing round ERW steel tubing from 1" to 16" in diameter, and custom square and rectangular HSS structural tubing from 12" to 48". For the AISC show, Valmont will be focusing on its custom HSS product, "HSS SuperStruct."

**Voortman Corporation**  
**Booth 659**  
 Suite 639, One Dearborn Square  
 Kankakee, IL 60901  
 Ph: 815.935.3010  
 Fax: 815.735.2201  
[www.voortmancorp.com](http://www.voortmancorp.com)

Voortman Corporation manufactures the most comprehensive range of steel processing machinery for the steel fabricator in today's marketplace. The range of equipment includes beam processing lines, plate and angle processing



lines, coping systems, thermal cutting systems combined with drilling, tapping, punching, and marking and shot blasting lines. Voortman has pioneered the automated fabrication shop that can run with minimal or no operator intervention with software and control systems tried and tested in our own fabrication facility, which produces 15,000 tons per year.



**Wheeling Corrugating Company**  
**Booth 438**  
 1134 Market St  
 Wheeling, WV 26003  
 Toll Free: 800.922.3235  
 Fax: 304.234.2330  
[www.wheelingcorrugating.com](http://www.wheelingcorrugating.com)

Wheeling Corrugating Company, a division of Wheeling-Pittsburgh Steel Corporation. Headquartered in Wheeling, WV, Wheeling Corrugating is one of America's leading fabricators of roll formed products for residential, agricultural, construction, highway, and bridge building markets. In business since 1890, Wheeling Corrugating has grown to 14 facilities nationally, which are strategically located throughout the country. This ensures personalized customer service and quick delivery to the job site. We serve all 50 states.

**Whiting Corporation**  
**Booth 652**  
 26000 Whiting Way  
 Monee, IL 60449-8060  
 Toll Free: 800.255.8594  
 Fax: 708.587.2001  
[www.whitingcorp.com](http://www.whitingcorp.com)

Whiting Corporation manufactures custom designed and pre-engineered overhead and gantry cranes for all types of critical indoor and outdoor applications. These long life and low maintenance cranes are built in capacities up to 600 tons for a single hook and may be cab, floor, or remote controlled. Whiting has over 120 years of manufacturing experience in providing dependable capital equipment for a wide variety of applications.

## The Steel Conference Exhibitors

(as of January 15, 2006; arranged by booth number)

|  |                                      |   |  |
|--|--------------------------------------|---|--|
| 216 Infasco                              | 333 Tekla                            | 465 Seismic Structural Design Associates  | 570 Cleveland City Forge               |
| 217 Canam Steel Corporation              | 339 Nicholas J. Bouras, Inc.         | 467 Buckner Companies                     | 571 Lindapter North America, Inc.      |
| 218 New Millennium Building Systems      | 343 RISA Technologies                | 468 Chicago Metal Rolled Products         | 573 PDM Steel Service Centers, Inc.    |
| 220 Ronstan Tension Elements             | 351 North American Galvanizing Co.   | 469 Atema, Inc.                           | 577 Comblifit                          |
| 222 Peterson Beckner Industries, Inc.    | 358 Carboline/AD Fire Protection     | 471 Derr Steel Erection Company           |  |
| 223 Graitec, Inc.                        | 359 Sherwin-Williams                 | 472 Aztec Galvanizing Services            | 615 Peddinghaus Corporation            |
| 226 Girder-Slab Technologies, LLC        | 360 SAFI Quality Software, Inc.      | 517 FabTrol Systems, Inc.                 | 616 Nitto Kohki USA, Inc.              |
| 229 SMI Steel Products/SMI Joist         | 362 Structural Desktop, Inc.         | 523 PPG Industries, Inc.                  | 618 The Sharon Companies Ltd.          |
| 230 Dowco Consultants Ltd.               | 364 Lincoln Electric                 | 524 Chaparral Steel                       | 620 NTC America Laser Group            |
| 234 Detailed Design Drafting Services    | 366 Navigant Consulting, Inc.        | 525 SSDCP, Inc.                           | 622 Greyhawk North America, LLC        |
| 236 Taylor Devices, Inc.                 | 368 SKM Industries Inc.              | 527 G.W.Y., Inc                           | 623 Ficep Corporation                  |
| 240 SidePlate Systems                    | 369 DetailCAD                        | 528 CSI Metal Dek Group, a unit of CSI    | 624 Steel Projects                     |
| 241 Computers and Structures, Inc.       | 370 Metals USA                       | 531 Kubes Steel Inc.                      | 630 American Punch Company             |
| 242 American Welding Society             | 371 Moore Erection L.P.              | 533 BDS Steel Detailers, Inc.             | 632 Allied Machine & Engineering Corp. |
| 244 Structural Engineering Inst. of ASCE | 372 Brown Consulting Services Ltd.   | 535 Flowdrill, Inc.                       | 633 Controlled Automation, Inc.        |
| 246 SOFTEK Services Ltd.                 | 373 International Paint LLC          | 537 Structural Software Consulting        | 634 CAMBCO, Inc.                       |
| 247 Autodesk, Inc.                       | 376 CSC (UK) Ltd.                    | 541 Applied Bolting Technology, Inc.      | 636 Stud Welding Associates Inc.,      |
| 248 Triodetic Spaceframes, Inc.          | 377 AISC                             | 543 P2 Programs                           | 639 Ocean Machinery, Inc.              |
| 250 Steel Joist Institute                | 377 Quality Management Co., LLC      | 545 Steel Erectors Assoc. of America      | 640 Burlington Automation              |
| 252 Quincy Joist Company                 | 380 Dimension 3D Printing            | 546 Hougen Manufacturing, Inc.            | 642 Mi-Jack Products, Inc.             |
| 253 The "Quebec Connection"              | 416 Nucor Corporation                | 547 InfoSight Corporation                 | 644 Industrial Galvanizers America     |
| 254 Hodell-Natco Industries, Inc.        | 416 Nucor Fastener - Indiana         | 548 St. Louis Screw & Bolt                | 646 Roof Products, Inc.                |
| 258 J. B. Long, Inc.                     | 416 Nucor - Vulcraft Group           | 549 Steel Cast Connections LLC            | 648 TurnaSure LLC                      |
| 259 Real Technology, LLC                 | 416 Nucor-Yamato Steel Company       | 550 Non-Destructive Testing Group         | 650 Busch Industries, Inc.             |
| 260 Techflow Engineers (India) Pvt. Ltd. | 417 Design Data                      | 551 Steel Founders' Soc. of America       | 651 Daito USA, Inc.                    |
| 262 Delta Engineering Group              | 424 Lohr Structural Fasteners, Inc.  | 552 IMPACT                                | 652 Whiting Corporation                |
| 263 Gaule Detailing                      | 425 StrucSoft Solutions, Inc.        | 553 Structural Stability Research Council | 654 Fisher & Ludlow                    |
| 264 Southwest Detailers Association      | 429 BD Structural Design, Inc.       | 554 Strand7 Pty Ltd.                      | 658 Groupe Cadmax                      |
| 265 Genesis Quality Systems, Inc.        | 433 RAM International                | 555 Bug-O Systems                         | 659 Voortman Corporation               |
| 267 V.M. Informatics                     | 438 Wheeling Corrugating Company     | 558 SteelCad Consulting Corporation       | 660 American Galvanizers Association   |
| 269 Natl. Inst. of Steel Detailers       | 441 Bentley Systems, Inc.            | 559 Albina Pipe Bending Co., Inc.         | 662 STINA                              |
| 270 Spencer Reed Group, Inc.             | 441 Research Engineers International | 560 Lincoln Structural Bolt               | 664 American Subcontractors Assoc.     |
| 271 Creative Engineering Services        | 442 Hilti, Inc.                      | 561 Structural Engineer magazine          | 666 Assurance Agency Ltd.              |
| 272 Sen Consulting Corp.                 | 447 Haydon Bolts, Inc.               | 562 National Steel Bridge Alliance        | 668 Edison Welding Institute (EWI)     |
| 273 LTC, Inc.                            | 449 Cerabco Ltd.                     | 563 Valmont Tubing                        | 669 Mazak Optonics Corporation         |
| 277 Algoma Steel, Inc.                   | 451 ESAB Welding and Cutting         | 564 Biach Industries, Inc.                | 670 Archive Supplies, Inc.             |
|  | 455 LeJeune Bolt Company             | 565 Steel Recycling Institute             | 676 Schuff Steel Company               |
| 317 Infra-Metals, Co.                    | 459 Arcelor International America    | 566 CASE                                  | 678 NCSEA                              |
| 321 AceCad Software, Inc.                | 461 Omnitex Associates, Inc.         | 567 Nelson Stud Welding, Inc.             | 745 Comeq, Inc.                        |
| 325 TDS Industrial Services Ltd.         | 463 A-Plus Galvanizing, LLC          | 568 IES, Inc.                             | 844 Behringer Saws, Inc.               |
| 327 Quindata Ltda.                       |                                      |   | 851 Pat Mooney, Inc.                   |