

Each month MSC's product section features items from all areas of the steel construction industry.

In general, these products have been introduced within the past six months. If you're looking for a specific product, visit MSC's online product directory at www.modernsteel.com/products. You can browse by product category or search on any term to help find the products you need, fast.

The Call You've been Waiting for

Motorola has introduced the rugged yet sophisticated, multi-function iDEN phone, which can help construction and manufacturing professionals increase productivity, improve efficiencies, and minimize costs by allowing them to get things done instantly.

Motorola's push-to-talk (PTT) technology offers a lot more than just instant voice communication; it can also connect multi-national teams via instant international calling, support custom Java technology applications that can—among other things—tie into back-end systems, and help companies keep track of supplies and employees using GPS technology. It also allows managers to set up call groups and connect with up to 100 people at a time.

For more information, visit idenphones.motorola.com/iden.



Sub-arc Catalog

ESAB Welding and Cutting Products' new catalog highlights the company's extensive line of submerged arc equipment, wire, and fluxes. ESAB introduced the submerged arc welding process in the 1930s and has continued to provide industry-leading expertise in sub-arc technology, from single-wire to multiple-wire systems and Synergic Cold Wire technology.

ESAB offers a full range of fluxes, including fused, bonded, active, or neutral fluxes, and a wide range of wires and bands for welding and cladding in carbon steel and stainless steel. The new catalog provides extensive information on how to choose the correct wire and flux for any application.

For more information, visit www.esabna.com or call 800.ESAB.123.

Prime Time Tubing

Atlas Tube's EPOX Z KOTE process accomplishes high-speed application, thin-film deposition in a high-performance epoxy powder coat primer. A unique benefit of this tubing is the ability to weld directly through the coating without any special preparation or breathing apparatus. Additionally, welding spatter does not stick to the coating, further reducing surface preparation cost.

EPOX Z KOTE Tubing can be bent 90° without cracking or flaking and is iron phosphate, fully primed, rust-resistant, oil-free, clean, and ready to use. End users can go directly to cutting, welding, and painting operations quicker and more efficiently. The tube is manufactured in accordance with ASTM A500 and ASTM A513 standards and is available in broad range of square sizes up to 7 in. by 7 in., rectangles up to 10 in. by 4 in., and rounds to 8.625 in. OD.

For more information, visit www.atlastube.com or call 877.679.5923.



All products submitted are considered for publication, and we encourage submittals related to all segments of the steel industry: engineering, detailing, fabrication, and erection. Submit product information via e-mail to Geoff Weisenberger (weisenberger@modernsteel.com). To be included in MSC's online products directory, contact Louis Gurthet (gurthet@modernsteel.com).

No More Burrs

Pat Mooney, Inc. introduces the PMI Upcut Saw, which can quickly and accurately saw aluminum extrusions with a burr-free mirror finish.

PMI Saws include pneumatic clamping systems with adjustable clamping pressure to prevent distortion of thin wall profiles. The top clamp holds the work piece on each side of the saw blade to deliver a burr-free cut-off part. This clamp is controlled by its own cylinder and is adjustable according to the size of the work piece.

Pat Mooney offers a PMI-18 CD Upcut Saw with a saw blade size of 18 in. by 1 in. bore and a table size of 26 $\frac{1}{3}$ in. by 26 in., and a PMI-20 Upcut Saw with a saw blade size of 20 in. by 1 in. bore and a table size of 35 $\frac{5}{8}$ in. by 35 $\frac{5}{8}$ in. The PMI-20 features a turntable that allows the set up of any mitre cut in seconds.

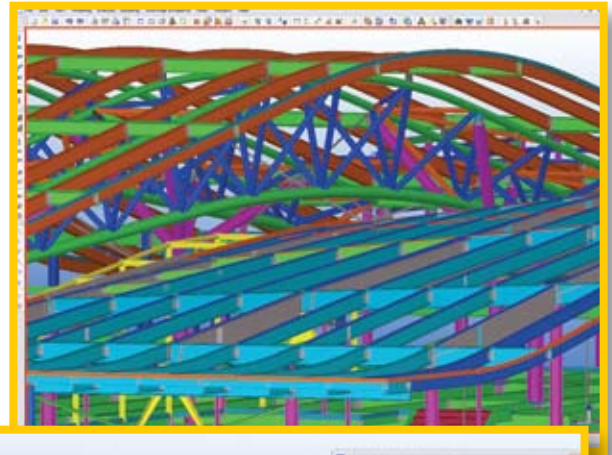
For more information, visit www.patmooneysaws.com or call call 800.323.7503.



Earth-Friendly and Nonevaporative

Camie-Campbell's B-404 all-purpose biodegradable lubricant is part of the company's Tom's Secret Formula Earth Friendly line of lubricants. B-404 is formulated with optimized U.S.-grown vegetable oils and selective additives. This penetrant, which contains no chlorine or regulated toxins, is safe for all metals and does not evaporate. It, providing lubrication longer than conventional petroleum-based products. It has outperformed typical petroleum-based lubricants in terms of lubricity, penetration and anti-wear properties.

For more information, visit www.camie.com or call 800-325-9572.



Better Control, More Secure

Tekla Structures is the first building information modeling (BIM) software package offering coverage for all elements of structural design. Steel fabricators and detailers, construction companies, and structural engineers can model the entire life cycle of a project to improve the construction process. This latest version, 14, features several enhancements including improved data storage, better drawing management controls, improved BIM file format exchanges, and a more secure licensing system.

For more information, visit www.teklastructures.com.

