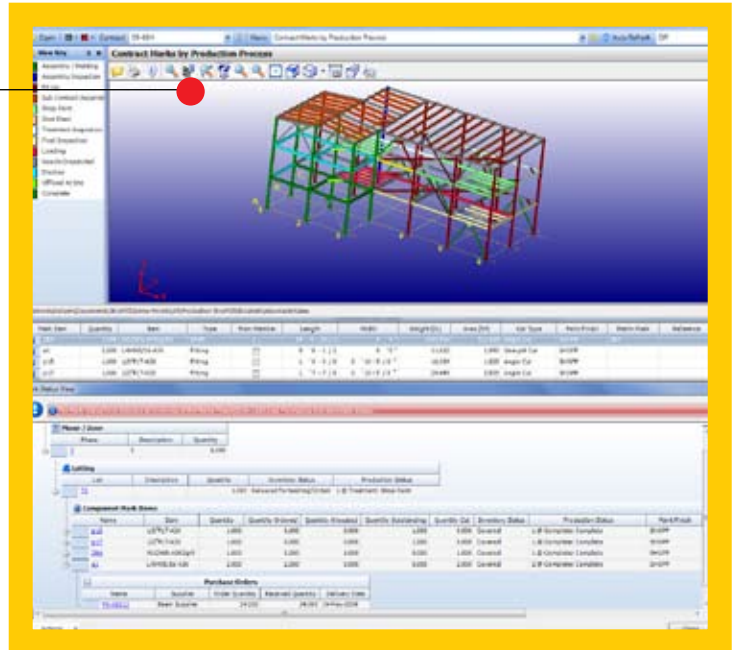


Each month MSC's product section features items from all areas of the steel construction industry. In general, these products have been introduced within the past six months. If you're looking for a specific product, visit MSC's online product directory at www.modernsteel.com/products. You can browse by product category or search on any term to help find the products you need, fast.

Fabrication Management

Version 7.3.10 of the StruM.I.S .NET fabrication management system brings the steel fabrication industry up to date with the very latest processing, tracking, planning and reporting facilities. StruM.I.S .NET streamlines the estimating, procurement, and fabrication process by providing seamless interaction among departments, suppliers, and clients. Advanced .NET technology makes real-time progress reports available anytime and from anywhere. The system can be implemented in several versions. The newest release has been written entirely in .NET to facilitate a more flexible, modern, and faster platform. StruM.I.S .NET offers fabricators a centralized system for providing live status of any item in the fabrication system and managing estimating, drawing and document management, nesting, purchasing, inventory control, production and shipping management.

For more information visit www.acecadsoftware.com or call 610-280-9840.



Accurate and Fast Cuts Automatically

The new Eisele PSU 450M circular cold saw from Behringer Saws can be programmed to automatically and accurately replicate cuts in iron-and-steel based materials to improve a company's operational cutting efficiencies while reducing labor and material costs. Controlled by a programmable logic controller (PLC), the PSU 450M requires minimal operator intervention once running. It stores up to 10 numerically controlled program applications, each with 3 sets, which also can be recalled to provide time and labor cost savings on future cuts. The number of pieces to cut, cutting length and one miter angle cut on each end of the finished material can be saved with each set. Additionally, all movements can be performed manually. The saw has a miter angle adjustment to cut materials at infinitely variable angles, with fixed stops at 45° and 90°, and can cut solid rounds up to 5.7 in. at 45° and 5.9 in. at 90°.

For more information visit www.behringersaws.com or call 888-234-7464.



All products submitted are considered for publication, and we encourage submittals related to all segments of the steel industry: engineering, detailing, fabrication, and erection. Submit product information via e-mail to Tom Klemens (klemens@modernsteel.com). To be included in MSC's online products directory, contact Louis Gurthet (gurthet@modernsteel.com).



High Portability Welding

The CaddyTig 2200i AC/DC power source produces quality TIG and stick welds in a variety of materials. This fifth generation of Caddy machines features advanced inverter technology and offers a compact design with an impact-resistant polymer and aluminium casing that is rugged yet light (about 21 lb) and easy to carry. The unit's control panels present all welding parameters in an easy-to-understand layout. A two-program function allows pre-programming and program changes during welding. A pulse TIG feature provides greater control of heat input and the weld pool, and a Micro Pulse feature minimizes the heat-affected area, particularly with thin metals. Other features include a hot start and arc force settings. Equipped with large cable connectors for high durability, these IP23-compliant machines are built for use outdoors, even in the rain.

For more information visit www.esabna.com or call 800-372-2123.



Comfortable, Effective Eye Safety

Gateway Safety's Wheelz safety eyewear combines all-day comfort with

popular sport styling and the maximum splash and impact protection of a goggle. Unlike traditional goggles that can be big and bulky, this eyewear has a compact, lightweight frame made of a soft, flexible material. An optional foam edge absorbs perspiration, preserving a clear view of the workplace and serving as a cushion for added hours of comfort. Ideal for use in laboratories, light manufacturing and industrial applications, Wheelz goggles feature a patented ventilation system that minimizes fogging by circulating air through the optical chamber. Ten unique conical air chambers line the frame's brow area. Secondary air enters the goggle through 10 additional ventilation ports on the frame's underside, creating a strong "whirlwind" of air that circulates through the inner frame.

For more information visit www.gatewayssafety.com or call 610-280-9840.