

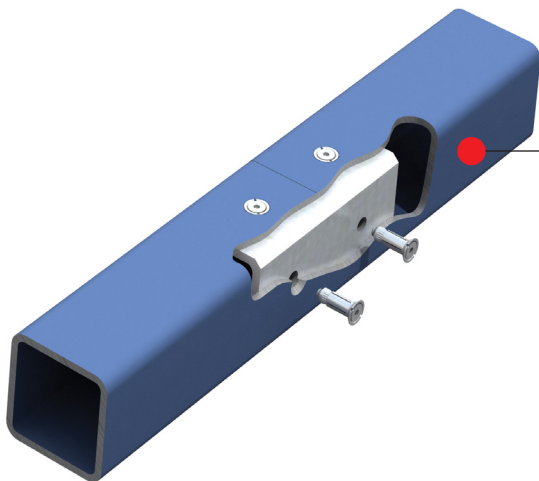
Each month MSC's product section features items from all areas of the steel construction industry. In general, these products have been introduced within the past six months. If you're looking for a specific product, visit MSC's online product directory at www.modernsteel.com/products. You can browse by product category or search on any term to help find the products you need, fast.



Automated Layout System and Fabrication Equipment

Peddinghaus continues to push the industry forward with a machine that now fully automates the part marking and layout process independent of all other operations. This all-new independent marking system paves the way for superior layout efficiencies and will be part of the company's exhibit at the 2011 NASCC: The Steel Conference in Pittsburgh. Also on display will be the company's Advantage 2 Drill Line for processing beams, channels, HSS tubing, and angle, and its HSFDB-2500 plate processor (shown here), which is capable of high speed carbide drilling, tapping, countersinking, milling, scribing, plasma and oxy-fuel cutting.

For more information, go to www.peddinghaus.com, call 815.937.3800, or visit booth 402 at the 2011 NASCC: The Steel Conference.



Steel Attachment Systems

Lindapter, inventors of the Girder Clamp and Hollo-Bolt, will be introducing a new official catalog and website, along with "hands on" product exercises to showcase connections for securing primary structural sections, secondary beams, steel floor and pipe/conduit supports. Featured product innovations will include the new Hollo-Bolt Flush Fit, the only structural bolt to be concealed within a hollow section with no protruding bolt head or collar for an aesthetic finish; and the Type AF Girder Clamp, the strongest connection system ever developed by Lindapter (tensile capacity up to 56,200 lb). U.S. distribution is through UCC Steelwork Connections Inc., Wilmington, Del.

For more information, go to www.lindapter.com, call 800.308.1043, or visit booth 637 at the 2011 NASCC: The Steel Conference.

Structural Motion Control

Taylor Devices, Inc. will exhibit its lines of Fluid Viscous Dampers, Lock-up Devices and Tuned Mass Damping Systems at the 2011 NASCC: The Steel Conference. These customized devices and systems use state-of-the-art fluid orificing technology and can be used in any application to mitigate shock or vibrations, such as buildings, bridges, stadiums, airports, reservoirs and towers. These shock or vibration inputs can originate from earthquakes, wind, pedestrian motions, traffic, train, machinery, or any other type of undesirable deflections and excursions. The Taylor devices literally soak-up the excess motion and energy, and convert the unwanted movements into heat, finally dissipating the heat into the air. This process has the advantageous effect that deflections, forces and accelerations within the structure are reduced, thereby improving the dynamic function of the structure.

For more information, go to www.taylordevices.com, call 716.694.0800, or visit booth 1215 at the 2011 NASCC: The Steel Conference.



Electronic Data Interchange Systems

Radley Corporation brings to the shop floor the latest in rugged handheld mobile computing and barcoding for the steel industry. In addition to showing in its booth at NASCC: The Steel Conference how computer technology is used for inventory management in the steel industry, Radley Corporation will demonstrate just how easy it is to error-proof steel shipments and track assemblies at the job site even in the harshest of environments.

For more information, go to www.radley.com, call 248.559.6503, or visit booth 1116 at the 2011 NASCC: The Steel Conference.



Fabrication Management Software

FabTrol Systems will demonstrate two of its most recently released steel fabrication management software tools, FabTrol Field and ModelView. FabTrol Field provides remote smartphone/web-based lookup of real-time assembly and load status. ModelView, a free plugin developed in collaboration with Tekla Corporation, displays current assembly information in the model colorized by drawing, production and shipping statuses. The company will also introduce its next-generation software featuring fully integrated material, drawing, project and shipping management tools. These modules—the first to be unveiled in the company's reengineering of its steel fabrication management software—offer a preview of further releases planned during the company's customer event in September 2011.

For more information, go to www.fabtrol.com, call 888.322.8765, or visit booth 1117 at the 2011 NASCC: The Steel Conference.

Lightweight Steel Tube and Solar Panels

Atlas Tube, a division of JMC Steel Group, will showcase its lightweight steel tube and the OYA Solar panels being used for a rooftop installation on the Atlas Tube facility in Harrow, Ontario, Canada. The two firms this year are developing North America's largest rooftop solar photovoltaic (PV) project. The 3.5-megawatt (MW) solar project will cover nearly 650,000 sq. ft of rooftop space (equivalent to 12 football fields) on the Atlas Tube facility. The project will provide 30% of Atlas's annual energy consumption. OYA Solar and its strategic partner Polar Racking (Polar), decided to incorporate Atlas' steel tube instead of aluminum tube. This provided OYA with significant cost savings, greater strength and structural rigidity over the use of aluminum.

For more information, go to www.atlastube.com, call 800.733.5683, or visit booth 1337 at the 2011 NASCC: The Steel Conference.

Structural Steel and Plate Fabrication Equipment

Ficep Corporation will use the 2011 NASCC: The Steel Conference to introduce three new products. Its Gemini 36 HD plate processing system, complete with thermal weld prep capability, integrates drilling, milling, countersinking, and tapping with cutting and can accommodate plates up to 10 ft. in width. The company also will introduce the world's only fully automatic drill/saw system for the integrated processing of structural shapes. This new system also features a new material positioning system. The third new product being introduced this year is the Excalibur 12, the only single-spindle traveling column structural steel drilling system on the market today. It features a secondary axis for scribing, the generation of slotted holes and the ability to reposition in the longitudinal axis for the next set of holes without having to unclamp and re-clamp the material.

For more information, go to www.ficepcorp.com, call 410.588.5800, or visit booth 423 at the 2011 NASCC: The Steel Conference.





Pin and High-Strength Connectors for HSS

Cast Connex Corporation will be exhibiting its two flagship products at NASCC: The Steel Conference. Cast Connex Universal Pin Connectors (UPC) (shown) are sleek, clevis-type fittings designed to connect seamlessly to round hollow structural section (HSS) elements for use in architecturally exposed structural steel (AESS) applications. The "true-pin" connectors have been carefully sculpted to provide smooth transitional geometry that is otherwise unachievable using standard fabrication practices. Cast Connex High-Strength Connectors (HSC) are innovative end connectors for hollow structural section (HSS) braces for use in seismic-resistant Concentrically Braced Frames (SCBF and OCBF). Using these standardized connectors vastly simplifies the design, detailing, and fabrication of seismic-resistant bracing, eliminates field welding, provides for compact connections, and significantly improves connection reliability and aesthetics.

For more information, go to www.castconnex.com, call 416.806.3521, or visit booth 1043 at the 2011 NASCC: The Steel Conference.

Dual Pump Hydraulic Ironworker

The Dual Operator 95-Ton Hydraulic Ironworker from Scotchman Industries has a hydraulic system designed with two pumps to ensure both operations have full hydraulic pressure and speed, complete with two valves, two stroke controls and two remote foot pedals. The DO 95 has a 95-ton capacity punch and a 9-in. throat depth, which can punch a 1 $\frac{3}{16}$ -in. hole in 1-in. material. This American-made ironworker, with four built-in stations, offers versatile, flexible and dependable features. Standard features include: 6-in. x 6-in. x $\frac{1}{2}$ -in. angle shear and a rectangular notcher that can notch 3-in. x 4-in. x $\frac{1}{2}$ -in. material. The 24-in. flat bar shear features a low rake angle and has the ability to shear up to 1-in. x 8-in. and $\frac{3}{8}$ -in. x 24-in. material. This machine also has the ability to accept optional equipment such as press brakes, rod shear, tube shears, picket tools, as well as, special tooling.

For more information, go to www.scotchman.com, call 800.843.8844, or visit booth 712 at the 2011 NASCC: The Steel Conference.



Help in Achieving Certification

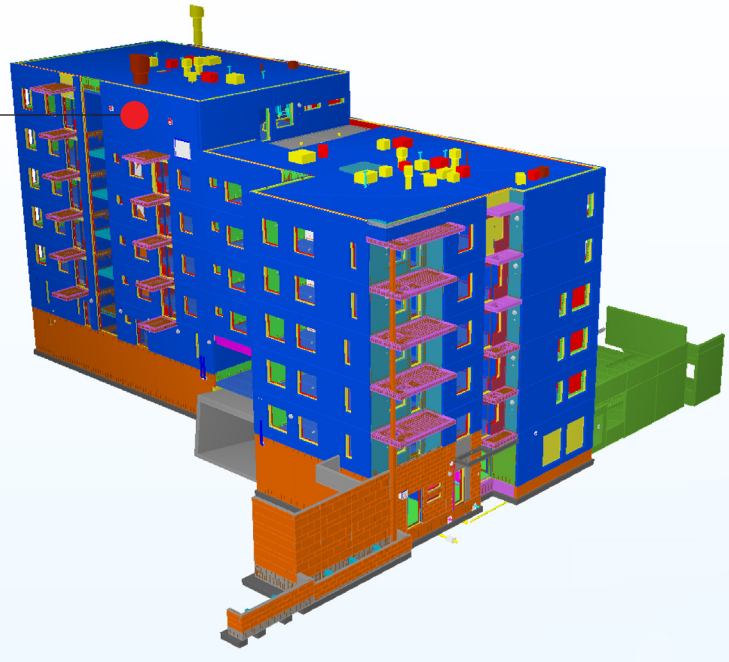
Atema offers distinctive training and management assistance to companies interested in improving their quality management systems and meeting various certification requirements, such as those for AISC erector, fabricator and bridge certifications. Options include document compliance creation, onsite assistance, and technical training. In addition, Atema can facilitate process improvement efforts at fabrication companies looking to compete in the steel industry.

For more information, go to www.atema.com, call 312.861.3000, or visit booth 1330 at the 2011 NASCC: The Steel Conference.

Collaboration and Clash Management Application

Tekla Inc. will showcase its new model-based project collaboration and clash management application Tekla BIMsight, the free application that is changing the way projects are managed and built. Architectural, civil, structural and MEP 3D models, created in any modeling software platform, can be merged together using Tekla BIMsight to create a truly usable building information model. Clashes and conflicts can be identified much more easily than with previous methods. Measurements can be taken and verified with on-site conditions. And because Tekla BIMsight is the first BIM coordination platform available completely free, users can now share their models with the entire project team.

For more information, go to www.teklabimsight.com, or visit booth 1023 at the 2011 NASCC: The Steel Conference.



Tags for Traceability of Metal Parts

InfoSight introduces a value-added barcode traceability solution for many harsh processes and environments to help trace your products from the fab shop to the customer. KettleTag PLUS is a metal barcode tag specifically formulated to survive the process of hot dip galvanizing from start to finish. PaintTag is an ideal low-cost barcode tracking tag for identifying fabricated steel through typical painting operations. ShotTag has been developed to withstand the cleaning process of shotblasting and uses a metal substrate with a chemical heat resistant coating. All of these tags can be printed on one of the company's many metal tag printers.








For more information, go to www.infosight.com, call 740.642.3600, or visit booth 629 at the 2011 NASCC: The Steel Conference.

Advanced Dynamic Analysis Software

S-Frame Software will showcase release 10.0 of its S-Frame Structural Office, which marks the company's 30th anniversary and is scheduled for customer shipment in the second quarter of 2011. Free demo CDs commemorating this anniversary will be handed out at NASCC: The Steel Show to registered attendees. This revision is a major upgrade with a host of new features and enhancements that expand the software's support for engineering practice towards more advanced forms of dynamic analysis, especially for seismic loading, the trend towards building and managing larger and more complex models, the influence of BIM (Building Information Modeling), new 64-bit operating system capabilities, parallel processing for improved performance, and significantly expanded support for steel building codes.

For more information, go to www.s-frame.com, call 604.273.7737, or visit booth 1030 at the 2011 NASCC: The Steel Conference.

S-Frame Steel Design (S-Steel) support for USA AISC 360-2005 LRFD & ASD

		SHAPE																
			I Section		Channel		Angle		Double		Tee		Circular		Square		Rectangular	
Classification		1~3	4	1~3	4	1~3	4	1~3	4	1~3	4	1~3	4	1~3	4	1~3	4	
LOAD CONDITION	AXIAL Only: Tension or Compression																	
	SHEAR and [Combined Shear+Axial]																	
	BENDING and [Combined Bending+Axial]	Laterally Supported																
		Laterally Unsup- ported (LTB)																