

Each month MSC's product section features items from all areas of the steel construction industry. In general, these products have been introduced within the past six months. If you're looking for a specific product, visit MSC's online product directory at www.modernsteel.com/products. You can browse by product category or search on any term to help find the products you need, fast.

Low-Sparking Grinding Wheel

CS Unitec's Eco Brazing (EB) Diamond Cluster grinding and cleaning wheels dramatically reduce sparking compared to resin bonded wheels, making them a good choice for grinding and cleaning steel and other materials in general industrial applications, as well as hazardous environments in oil, gas, nuclear, mining, marine and other industries. Minimal sparking decreases the fire hazard from sparks and also increases the visibility of the workpiece. The EB abrasive wheel lasts 100 times longer than an ordinary resin bonded wheel, increasing tool life and significantly reducing abrasive dust and material waste. It also saves time because the operator does not have to change the wheels. Available in 80 grit on disc sizes from 4 in. to 7 in. diameter, the disc's light weight allows for high-rotation grinding with portable angle grinders. Max speeds of discs range from 8,400 to 15,200 rpm, depending on disc diameter. An elastic high-yield steel backing plate ensures that operators do not grind the material by over removal.

For more information, visit www.csunitec.com or call 800.700.5919.



Headlamp Lasts Up to 12 Hours

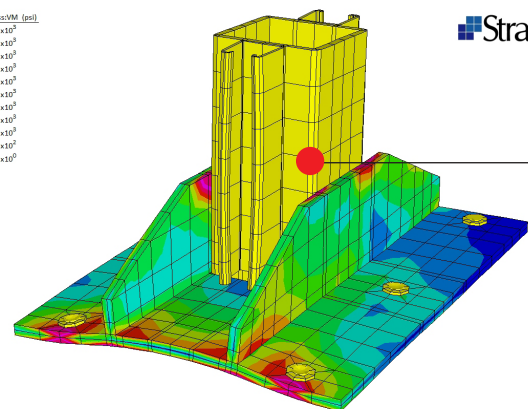
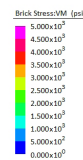
Petzl's PIXA line of headlamps is designed specifically for professionals who regularly work in the dark. Offered in three versions with an increasing number of beam options, these headlamps are tough, compact and reliable. They keep hands free while providing versatile lighting options to accommodate different work conditions and have been tested and approved for many hazardous work environments. Integrated electronic power regulation provides a constant level of luminosity and lighting distance. Operating on two AA alkaline batteries (included), the headlamps also are compatible with lithium ion or rechargeable Ni-MH batteries, both of which can significantly extend estimated burn time.

For more information, visit www.petzl.com/pixa or call 801.926.1500.

Sophisticated Finite Element Analysis Software

The latest Strand7 release, Strand7 R2.4, is a major new version of the finite element analysis software and offers users sophisticated capabilities like Staged Construction Analysis (which fully accounts for the stress history in the structure), Creep and Shrinkage Simulation and Moving Load Analysis, in addition to general purpose FEA capabilities. The Moving Load module can be used to model all types of loads moving over a structure, including heat loads to simulate processes like welding. As a general-purpose FEA software, Strand7 also offers structural engineers the tools needed to perform detailed analysis of complex parts, such as bolted joints, taking into account contact and material nonlinearity. Standard features include statics, dynamics and heat transfer capabilities.

For more information, go to www.strand7.com.



Strand7

All products submitted are considered for publication, and we encourage submittals related to all segments of the steel industry: engineering, detailing, fabrication, and erection. Submit product information via email to Tom Klemens (klemens@modernsteel.com). To be included in MSC's online products directory, contact Louis Gurthet (gurthet@modernsteel.com).